

EUROfase 48116 Rectangular LED Mirror



EUROfase 48116 Rectangular LED Mirror Instruction Manual

[Home](#) » [EUROfase](#) » EUROfase 48116 Rectangular LED Mirror Instruction Manual 

Contents

- [1 EUROfase 48116 Rectangular LED Mirror](#)
- [2 Product Information](#)
- [3 Product Usage Instructions](#)
- [4 IMPORTANT SAFETY INSTRUCTIONS](#)
- [5 HARDWARE INCLUDED](#)
- [6 OPERATION INSTRUCTIONS](#)
- [7 Documents / Resources](#)
 - [7.1 References](#)
- [8 Related Posts](#)



EUROfase 48116 Rectangular LED Mirror



Product Information

Specifications

- Model: SILVANA 48116
- Maximum Wattage: 31W
- Light Source: LED
- Power Supply: 120V~, 60Hz

Product Usage Instructions

Installation

1. Ensure the power supply is turned off before installation.
2. Mount the lighting product securely using appropriate fixtures and hardware.
3. Follow the wiring diagram provided in the manual to connect the product to the power source.

Operation:

Once installed, turn on the power supply to activate the lighting product. Use the designated switches or controls to adjust brightness or settings as needed.

Maintenance:

Regularly clean the lighting product with a soft, dry cloth to remove dust and debris. Avoid using harsh chemicals or abrasive materials that may damage the finish.

FAQ (Frequently Asked Questions)

- **Q: How do I replace the LED bulb in the SILVANA 48116?**

A: To replace the LED bulb, carefully remove the cover of the lighting fixture and gently twist out the existing bulb. Insert a new LED bulb of the same specifications and secure the cover back in place.

- **Q: Can I use dimmer switches with this product?**

A: Yes, you can use dimmer switches with the SILVANA 48116 as long as they are compatible with LED lights and within the specified wattage range.

- **Q: What should I do if the product malfunctions?**

A: If you encounter any issues or malfunctions with the product, contact Customer Service & Tech Support at [905-695-2147](tel:905-695-2147) or email Info@eurofase.com for assistance.

Customer Service & Tech Support: [905-695-2147](tel:905-695-2147)

Email: Info@eurofase.com

33 West Beaver Creek Rd, Richmond Hill, Ontario Canada L4B 1L8

Thank You

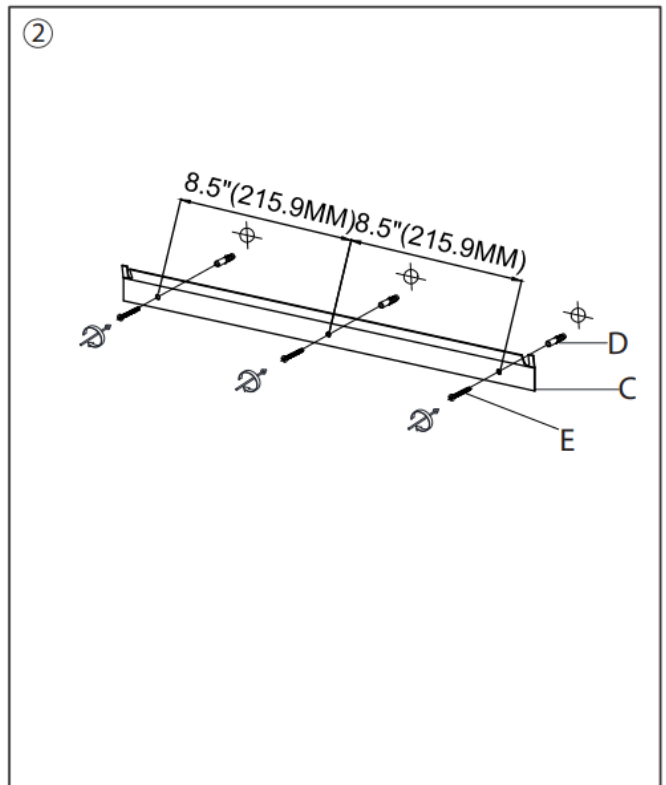
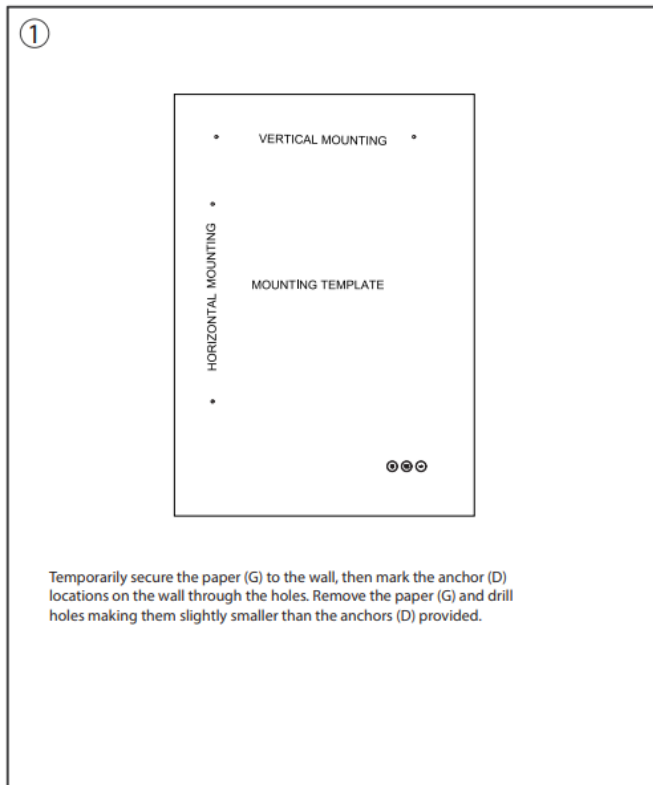
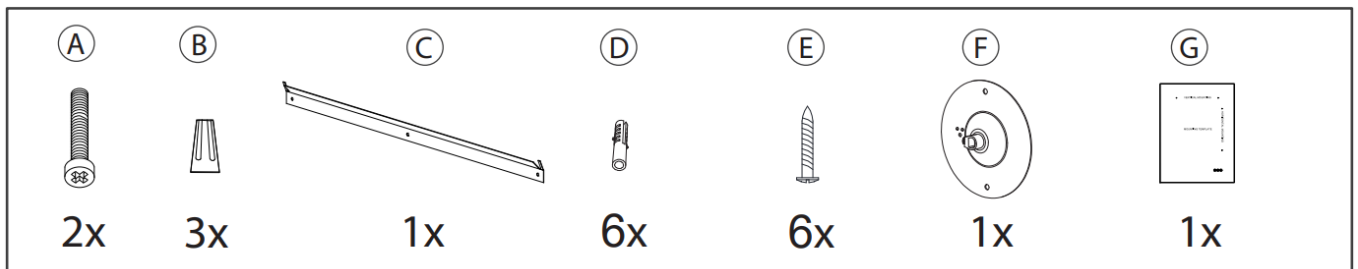
You've just purchased a lighting product designed and built to provide you with years of enjoyment.

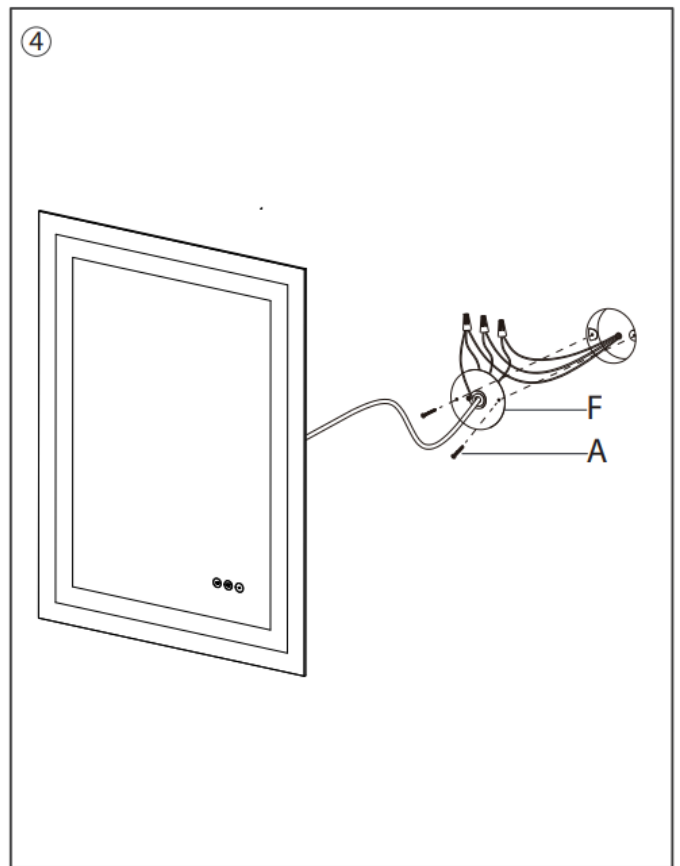
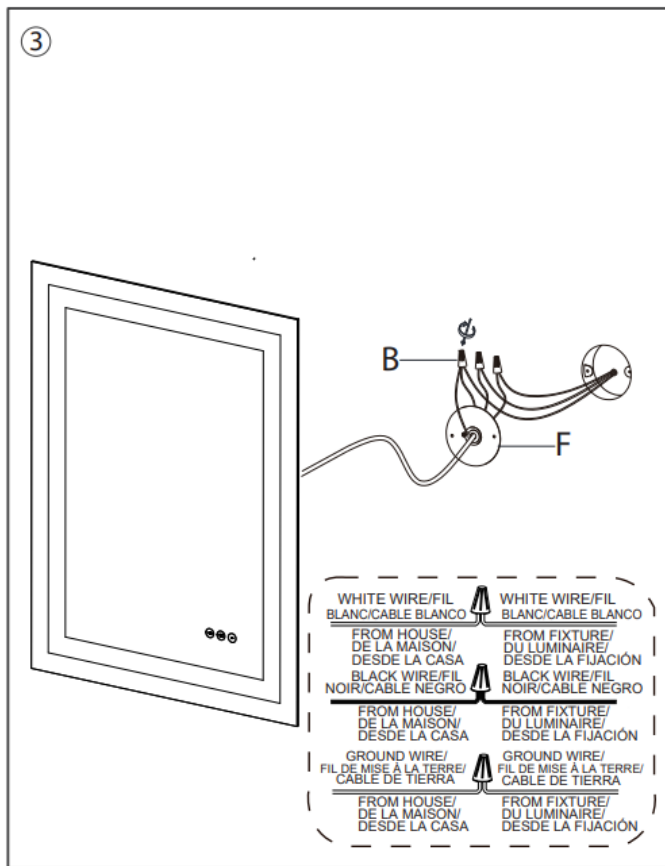
IMPORTANT SAFETY INSTRUCTIONS

- Attention to installer, must test the light fixture before installation.
- When using an electrical furnishing, basic precautions should always be followed, including the following:
 - Read all instructions before using (this furnishing).
 - DANGER – To reduce the risk of electric shock: Always unplug this furnishing from the electrical outlet before cleaning or servicing.
 - WARNING – To reduce the risk of burns, fire, electric shock, or injury to persons:
 - Unplug from outlet before putting on or taking off parts.
 - Close supervision is necessary when this furnishing is used by, or near children, invalids, or disabled persons.
 - Use this furnishing only for its intended use as described in these instructions. Do not use attachments not recommended by the manufacturer.
 - Never operate this furnishing if it has a damaged cord or plug, if it is not working properly, if it has been dropped or damaged, or dropped into water. Return the furnishing to a service center for examination and repair.
 - Keep the cord away from heated surfaces.
 - Never operate the furnishing with the air openings blocked. Keep the air openings free of lint, hair, and the like.
 - Never drop or insert any object into any opening.
 - Do not operate where aerosol (spray) products are being used or where oxygen is being administered.
 - To disconnect, turn all controls to the off position, then remove plug from outlet.
 - WARNING: Risk of Injury – Keep children away from this furnishing.
 - WARNING: Risk of Electric Shock – Connect this furnishing to a properly grounded outlet only. See Grounding Instructions.
- GROUNDING INSTRUCTIONS:
 - For a permanently connected product: This product must be connected to a grounded metal, permanent wiring system, or an equipment-grounding conductor must be run with the circuit conductors and connected to the equipment-grounding terminal or lead on the product.
 - For a grounded, cord-connected product rated max 15 amperes and intended for use on a nominal 120-volt supply circuit :
 - This product is for use on a nominal 120-volt circuit and has a grounding plug. Make sure that the product is connected to an outlet having the same configuration as the plug. No adapter should be used with this product.
- For loading always put heavier items at the bottom and not near the top in order to help prevent the possibility of the furnishing tipping over.
- **WARNING:** Risk of Injury to Persons – do not use this furnishing to support video equipment such as televisions or computer monitors.

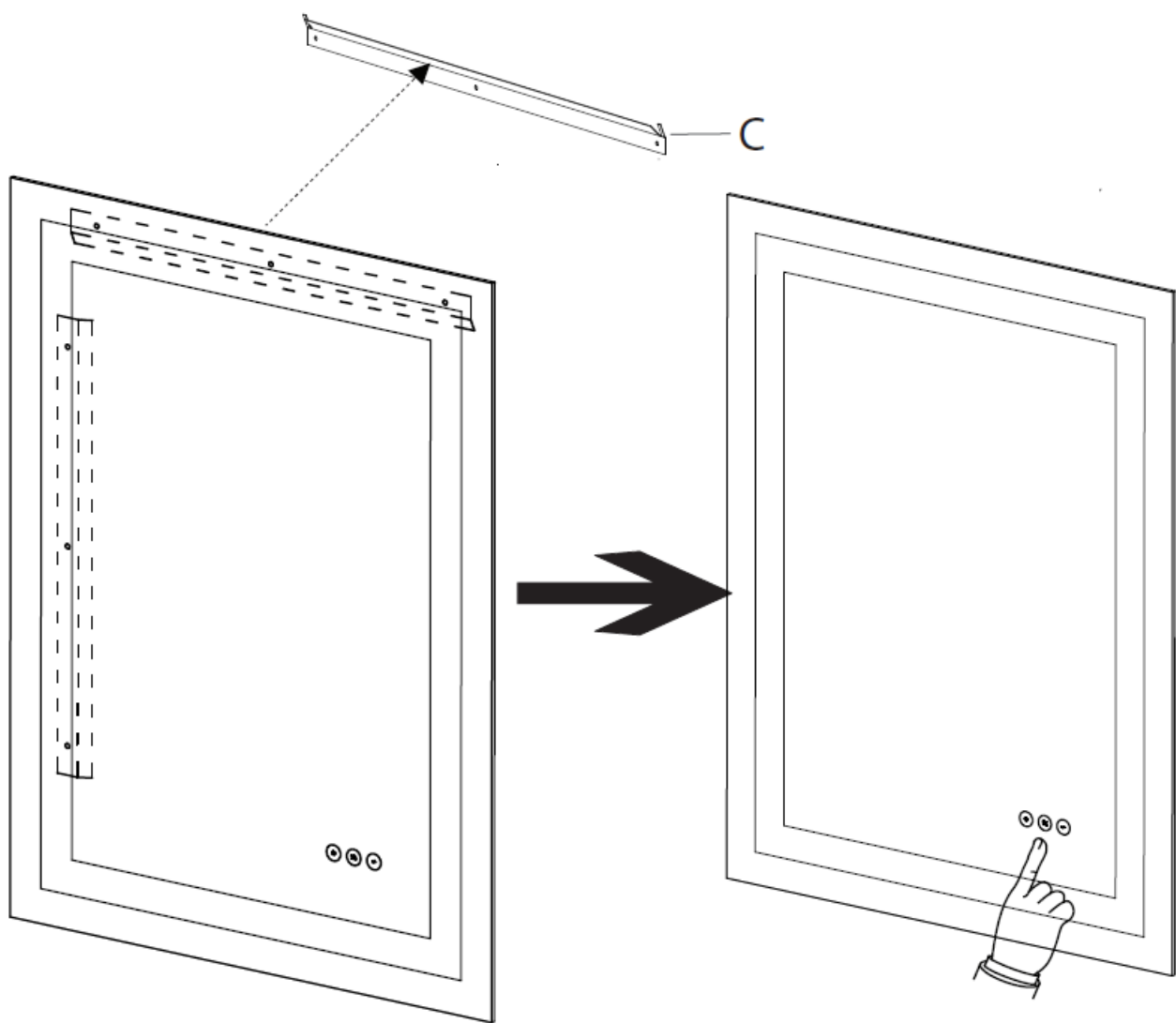
- Mount furnishings at the correct height.
- This unit is suitable for installation in a damp, indoor location only.
- This unit is to be mounted to a metal electrical junction box (outlet box) directly supported by the building structure.
- Save this instructions for future reference.
- Estimated Assembly Time: 20 minutes
- Tools Required For Assembly (not included): Flathead screwdriver, Phillips screwdriver, Pliers, Electrical tape and Wire cutters.
- Helpful Tools (not included): Wire strippers, Ladder.

HARDWARE INCLUDED





Option 1



OPERATION INSTRUCTIONS



Short touch: ON and OFF
Press and hold: Dimmable

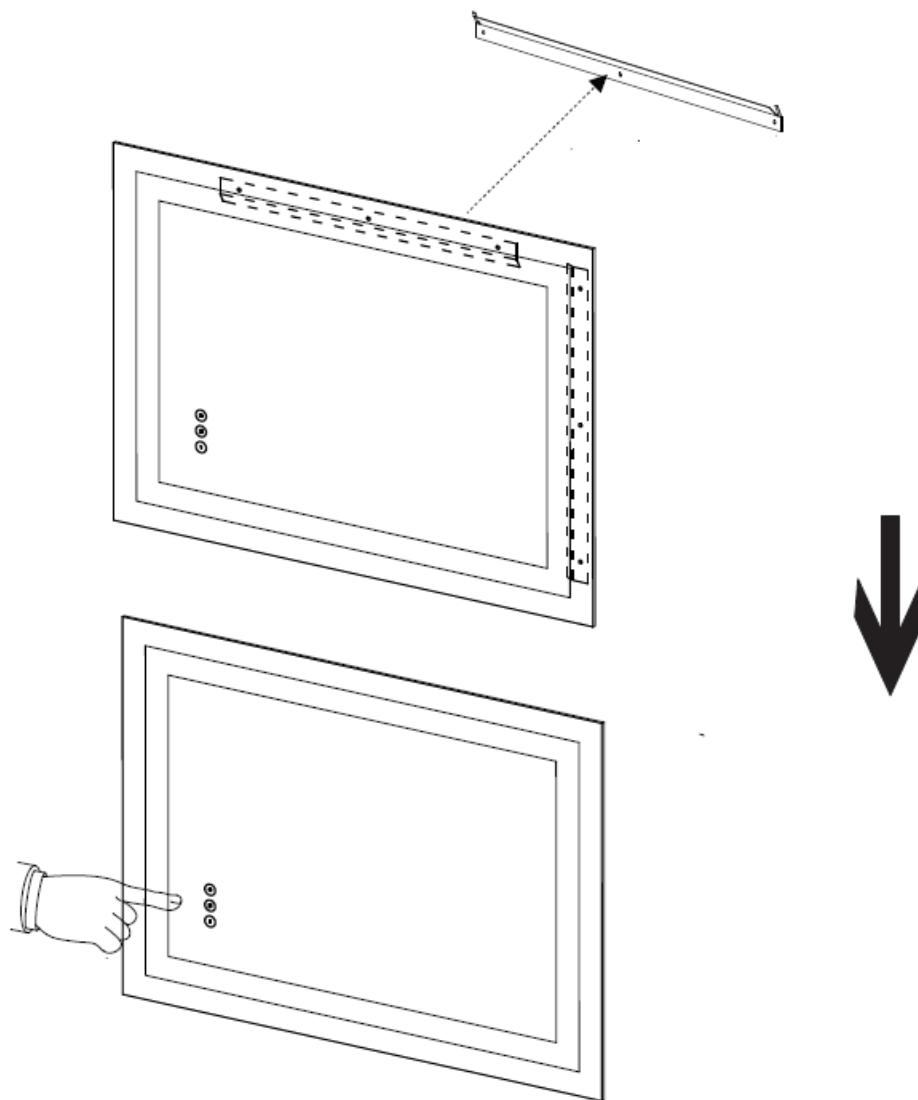


Short touch to turn ON and OFF for the defogger function.
Automatic turn off after 1 hour.



Short touch to adjust the colour temperature:
3000K (Warm), 4500K (Neutral), 6400K (Cool).
Press and hold: Stepless CCT.

Option 2



Documents / Resources



[EUROfase 48116 Rectangular LED Mirror](#) [pdf] Instruction Manual
48116 Rectangular LED Mirror, 48116, Rectangular LED Mirror, LED Mirror, Mirror

References

- [User Manual](#)

[Manuals+.](#) [Privacy Policy](#)

This website is an independent publication and is neither affiliated with nor endorsed by any of the trademark owners. The "Bluetooth®" word mark and logos are registered trademarks owned by Bluetooth SIG, Inc. The "Wi-Fi®" word mark and logos are registered trademarks owned by the Wi-Fi Alliance. Any use of these marks on this website does not imply any affiliation with or endorsement.