



eufy T89000D4 Entry Security Sensor User Manual

[Home](#) » [Eufy](#) » eufy T89000D4 Entry Security Sensor User Manual 

Contents

- [1 eufy T89000D4 Entry Security Sensor](#)
- [2 WHAT'S INCLUDED](#)
- [3 BATTERY PLACEMENT](#)
- [4 ADDING ENTRY SENSOR TO YOUR SYSTEM](#)
- [5 MOUNTING THE SENSOR](#)
- [6 STATUS LED](#)
- [7 FAQ](#)
- [8 Anker Innovations Deutschland GmbH](#)
- [9 CUSTOMER SERVICE](#)
- [10 CONTACTS](#)
- [11 Documents / Resources](#)
 - [11.1 References](#)
- [12 Related Posts](#)



eufy T89000D4 Entry Security Sensor



WHAT'S INCLUDED

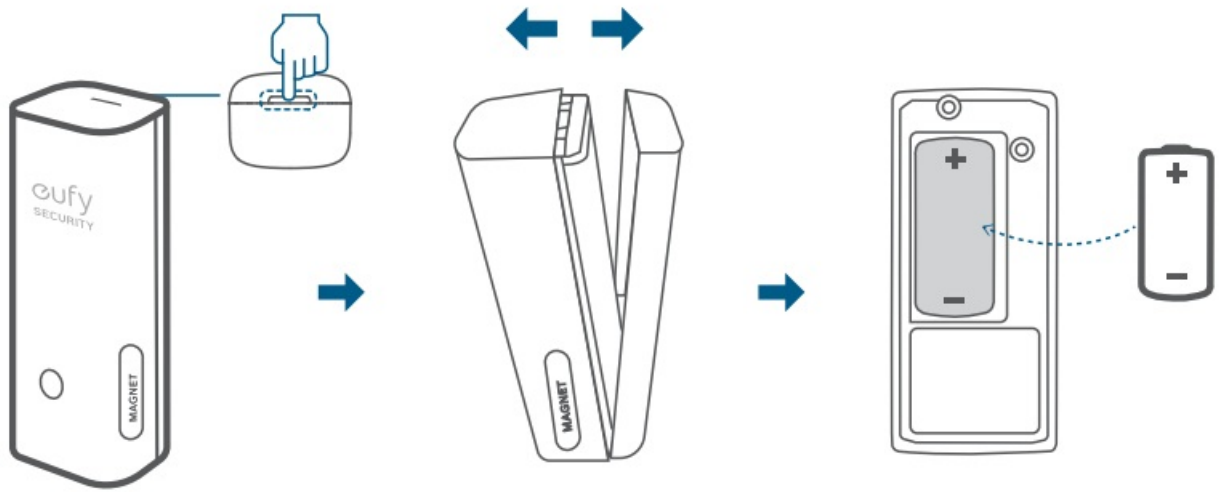
For Entry Sensor Installation



- Entry Sensor Sensor Magnet (T8900)
- Sensor Magnet
- CR123A Battery
- Mounting Screws

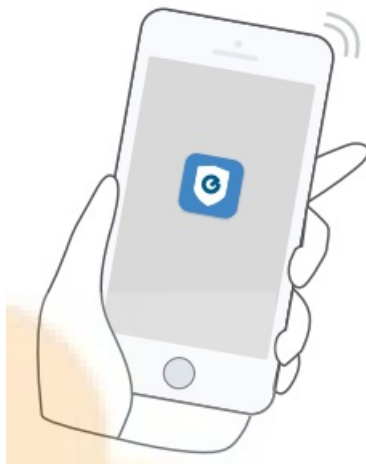
Note: Entry Sensor is only compatible with the eufy Security Homebase or Homebase E.

BATTERY PLACEMENT



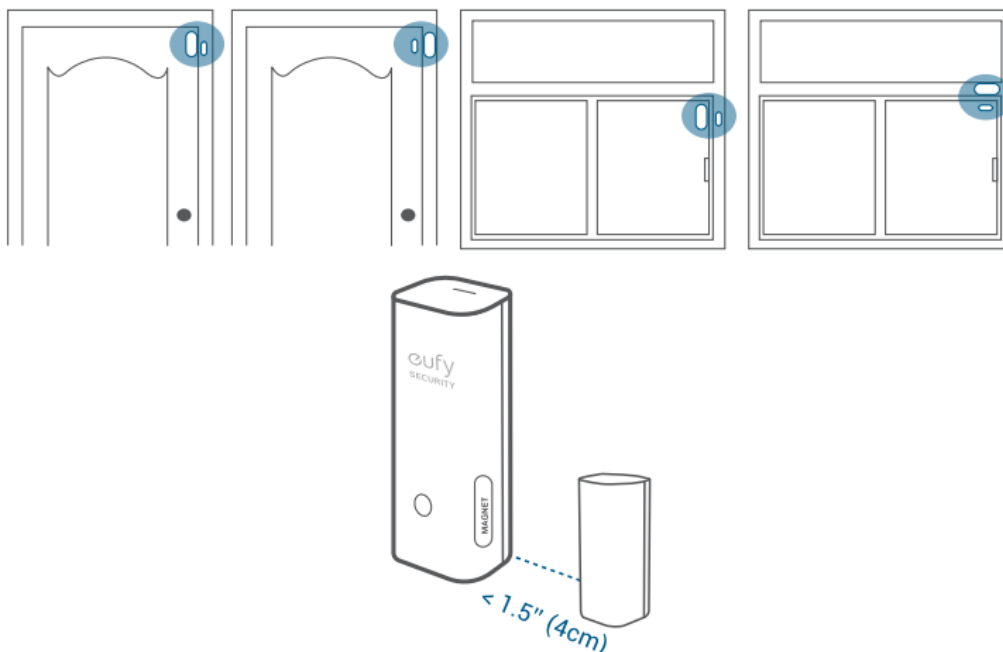
- Remove the battery compartment lid on the Entry Sensor and insert the provided CR123A battery. Replace the lid.

ADDING ENTRY SENSOR TO YOUR SYSTEM






- On eufy Security, app follows the on-screen instructions to add your eufy Security devices. Choose Add Device, then select Entry Sensor to add it to your system.

MOUNTING THE SENSOR



- Place the sensor on the edge of a door or window. Use the adhesive strips (On the back of the sensor) or mounting screws provided to mount the sensor.
- Make sure the gap between Entry Sensor and the sensor magnet is less than 1.6 in (4 cm) when the door or window is closed.
- The bottom of the sensor magnet should align with the bottom of Entry Sensor.

STATUS LED

Sensor LED indicator	Entry Sensor status
 Flashing blue	Adding to HomeBase
 Flashing blue (Once)	Sensor detects an open/close activity
 Flashing red (Once)	Sensor battery is low or disconnects from HomeBase

FAQ

- **What battery does the Entry Sensor use?**
 - Entry Sensor uses a CR123A battery with 3V output.
- **How long does the battery last?**
 - One CR123A battery usually lasts up to 2 years, but depends on the usage.

Please visit our official website to download the user manual: www.eufylife.com

NOTICE

This product complies with the radio interference requirements of the European Community.

Declaration of Conformity

Hereby, Anker Innovations Limited declares that this device is in compliance with the essential requirements and other relevant provisions of Directive 2014/53/EU. For the declaration of conformity, visit the Web site:

<https://www.eufylife.com/>

Do not use the Device in the environment at too high or too low temperature, never expose the Device under strong sunshine or too wet environment. The suitable temperature for the product and accessories is 0°C – 40°C.

RF exposure information: The Maximum Permissible Exposure (MPE) level has been calculated based on a distance of d=20 cm between the device and the human body. To maintain compliance with RF exposure requirements, use products that maintains a 20cm distance between the device and the human body.

CAUTION: RISK OF EXPLOSION IF BATTERY IS REPLACED BY AN INCORRECT TYPE. DISPOSE OF USED BATTERIES ACCORDING TO THE INSTRUCTIONS.

- **SUB-1G Frequency range:** 866~866.8MHz 868.2~869MHz
- **Sub-1G Max Output Power:** 8.865dBm(ERIP for 868.2~869MHz); 11.746dBm (ERIP for 866~866.8MHz)

Anker Innovations Deutschland GmbH

- Georg-Muche-Strasse 3-5, 80807 Munich, Germany
- Anker Technology (UK) Ltd
- Suite B, Fairgate House, 205 Kings Road, Tyseley, Birmingham, B11 2AA, United Kingdom

This product is designed and manufactured with high-quality materials and components, which can be recycled and reused.

This symbol means the product must not be discarded as household waste, and should be delivered to an appropriate collection facility for recycling. Proper disposal and recycling helps protect natural resources, human health and the environment. For more information on disposal and recycling of this product, contact your local municipality, disposal service, or the shop where you bought this product.

FCC Statement

This device complies with Part 15 of the FCC Rules. Operation is subject to the following two conditions:

1. This device may not cause harmful interference.
2. This device must accept any interference received, including interference that may cause undesired operation.

Note: This equipment has been tested and found to comply with the limits for a Class B digital device, pursuant to Part 15 of the FCC Rules. These limits are designed to provide reasonable protection against harmful interference in a residential installation. This equipment generates uses and can radiate radio frequency energy and, if not installed and used in accordance with the instructions, may cause harmful interference to radio communications. However, there is no guarantee that interference will not occur in a particular installation. If this equipment does cause harmful interference to radio or television reception, which can be determined by turning the equipment off and on, the user is encouraged to try to correct the interference by one or more of the following measures:

1. Reorient or relocate the receiving antenna.

2. Increase the separation between the equipment and receiver.
3. Connect the equipment into an outlet on a circuit different from that to which the receiver is connected.
4. Consult the dealer or an experienced radio/TV technician for help.

FCC Radio Frequency Exposure Statement

The device has been evaluated to meet general RF exposure requirements. The device can be used in fixed / mobile exposure conditions. The min separation distance is 20cm.

The following importer is the responsible party

- **Company Name:** POWER MOBILE LIFE, LLC
- **Address:** 400 108th Ave NE Ste 400, Bellevue, WA 98004-5541
- **Telephone:** 1-800-988-7973

This device complies with Industry Canada licence-exempt RSS standard(s). Operation is subject to the following two conditions:

1. This device may not cause interference.
2. This device must accept any interference, including interference that may cause undesired operation of the device.”

This Class B digital apparatus complies with Canadian ICES-003.

IC RF Statement: When using the product, maintain a distance of 20cm from the body to ensure compliance with RF exposure requirements.

CUSTOMER SERVICE

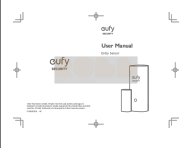

Warranty

- 12-month limited warranty

CONTACTS

- **TEL:** +1 (800) 988 7973 Mon-Fri 9AM-5PM (PT)
 - +44 (0) 1604 936 200 Mon-Fri 6AM-11AM (GMT)
 - +49 (0) 69 9579 7960 Mon-Fri 6:00-11:00
- **Customer Support:** support@eufylife.com
- **FB:** @EutyOfficial
- **TWITTER:** @EufyOfficial
- **INSTA:** eufyofficial

Documents / Resources

	eufy T89000D4 Entry Security Sensor [pdf] User Manual T89000D4, Entry Security Sensor, T89000D4 Entry Security Sensor, Security Sensor, Sensor
	eufy T89000D4 Entry Security Sensor [pdf] User Guide T89000D4, Entry Security Sensor, T89000D4 Entry Security Sensor

References

- [eufy | Smart Home Simplified](#)
- [eufy | Smart Home Simplified](#)

Manuals+.