



eufy T87A0 Home Security Display User Guide

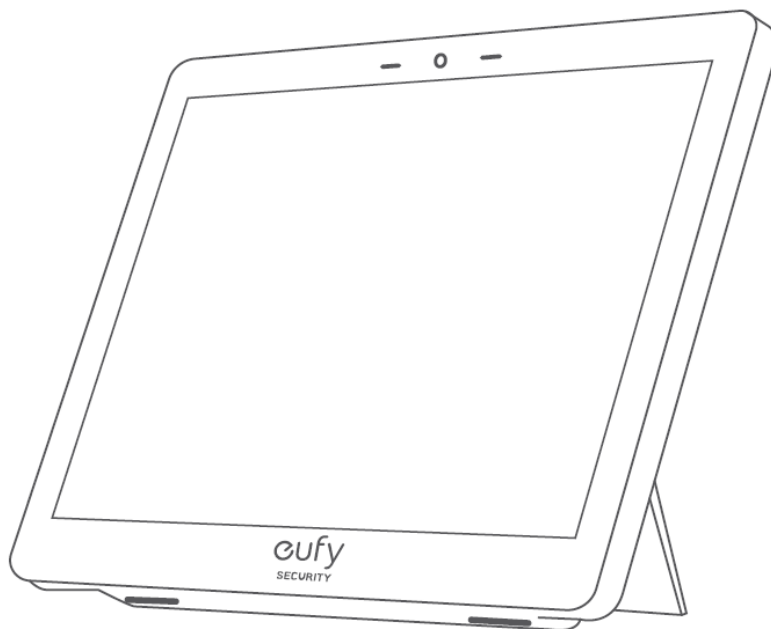
[Home](#) » [Eufy](#) » eufy T87A0 Home Security Display User Guide 



Contents

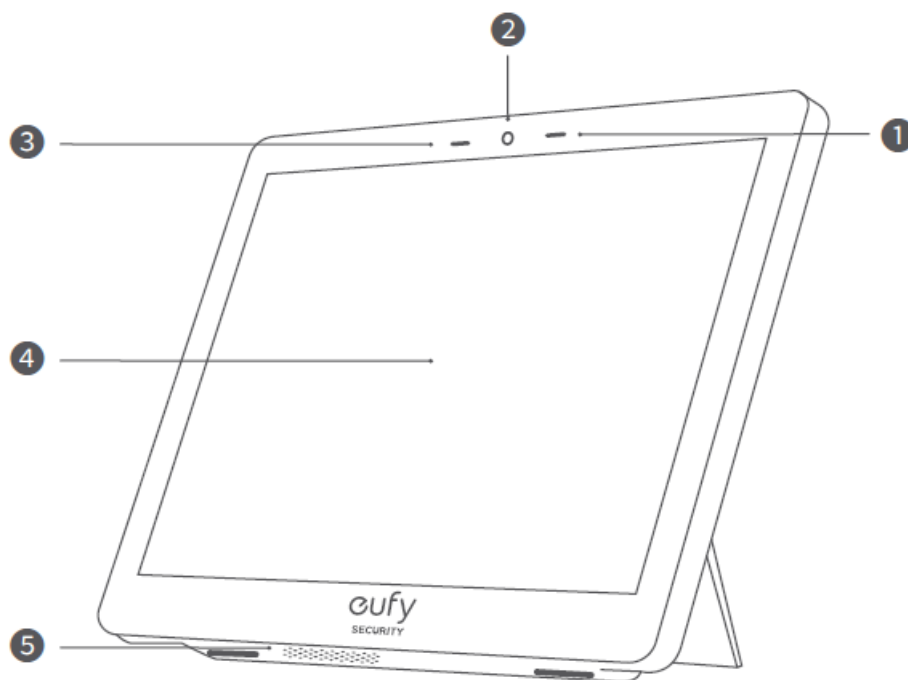
- [1 eufy T87A0 Home Security Display](#)
- [2 OVERVIEW](#)
- [3 MOUNTING](#)
- [4 Wall Mount](#)
- [5 SETUP](#)
- [6 NOTICE](#)
- [7 NOTICE \(United States Of America\)](#)
- [8 NOTICE \(Canada\)](#)
- [9 CUSTOMER SERVICE](#)
- [10 Documents / Resources](#)
- [11 Related Posts](#)

eufy T87A0 Home Security Display

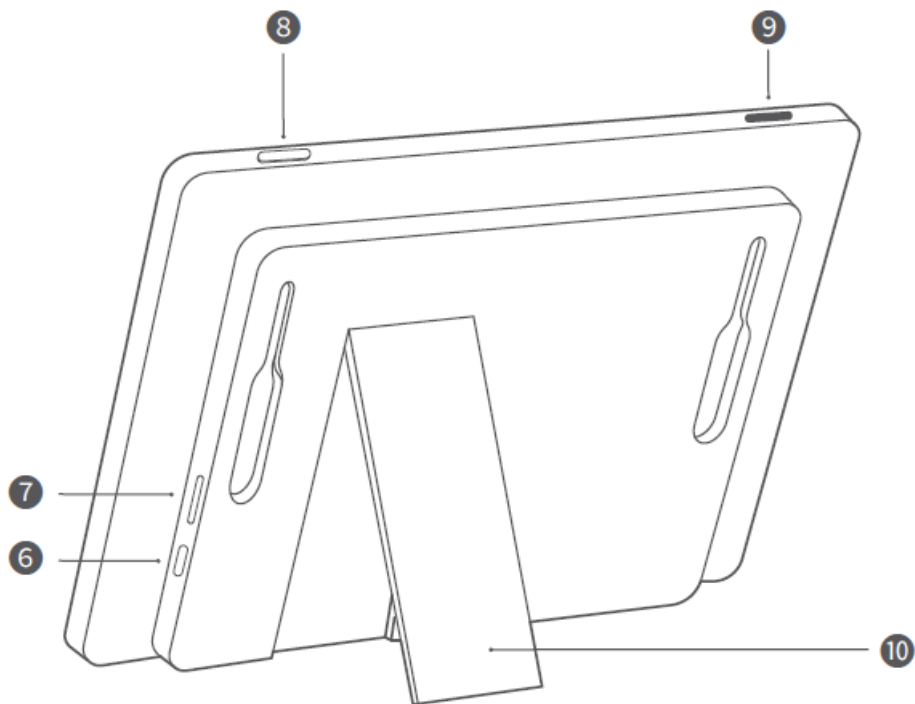


OVERVIEW

Model: T87A0



1. Time of Flight Sensor / Microphone
2. Status Light
 - Flashing red slowly: Disconnected from the Internet.
 - Flashing red fast: An alarm is going off.
3. Light Sensor
4. Screen
5. Speaker



6. Power Port

7. Micro SD Card Slot

8. Screen Control Button

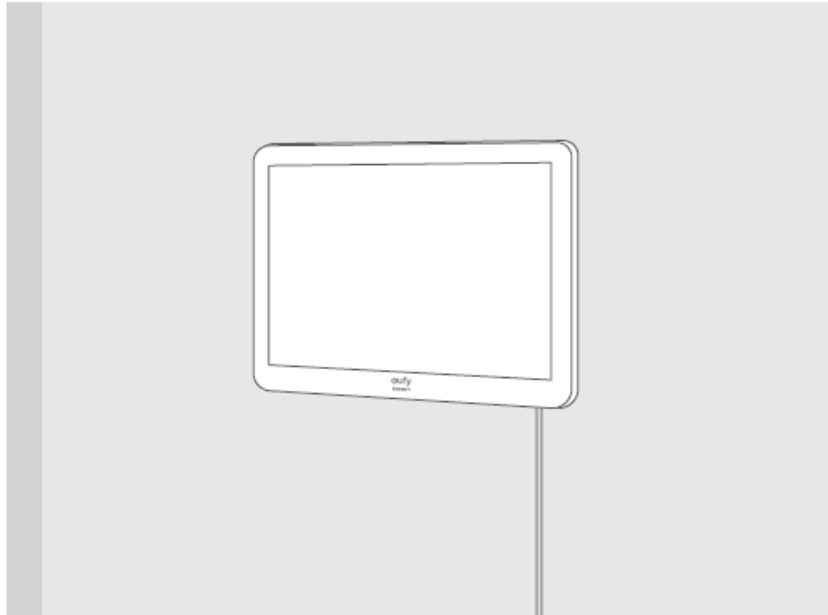
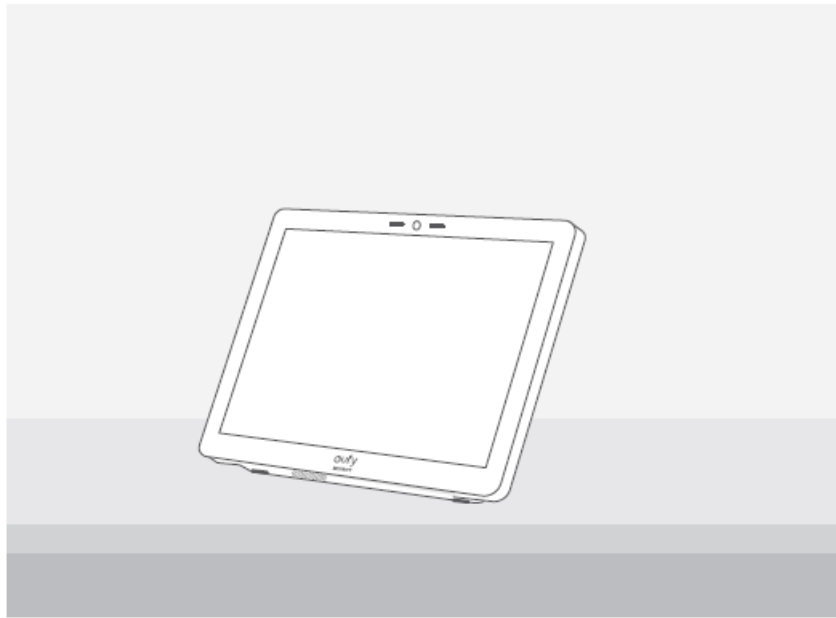
- Single press: Turn on / off the screen.
- Double press: Display multiple cameras (up to 4 camera feeds) on the screen.

9. SOS Button

10. Folding Bracket

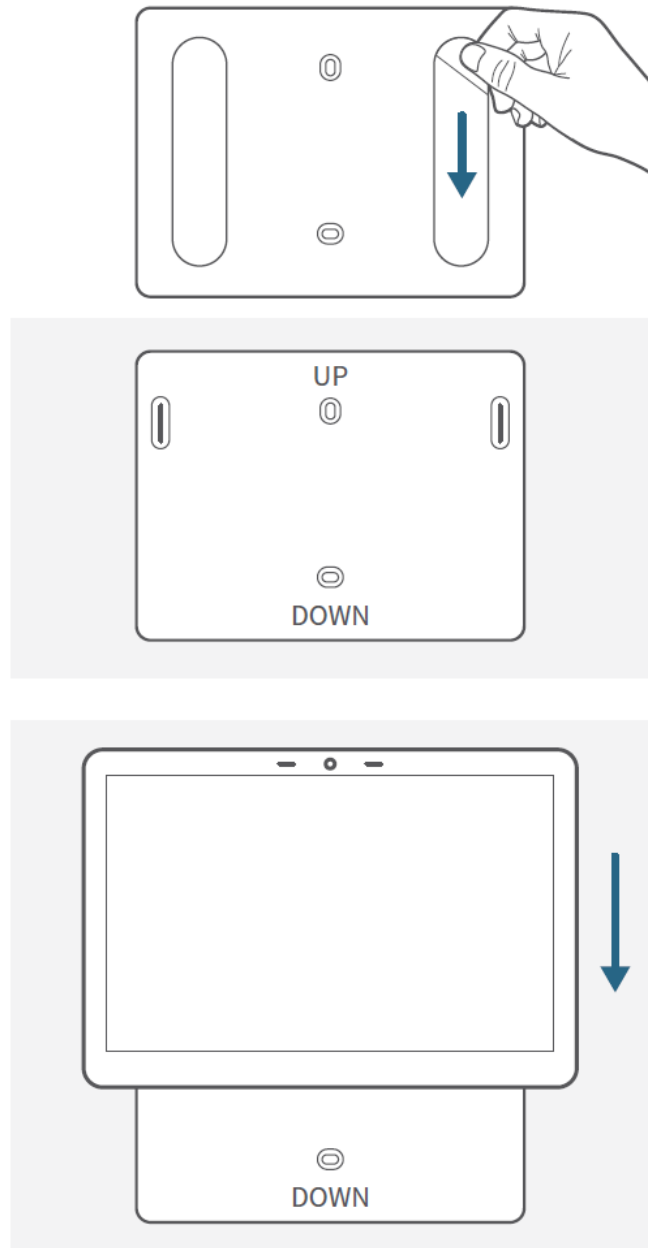
MOUNTING

You can place the display on a table or mount it on a wall.

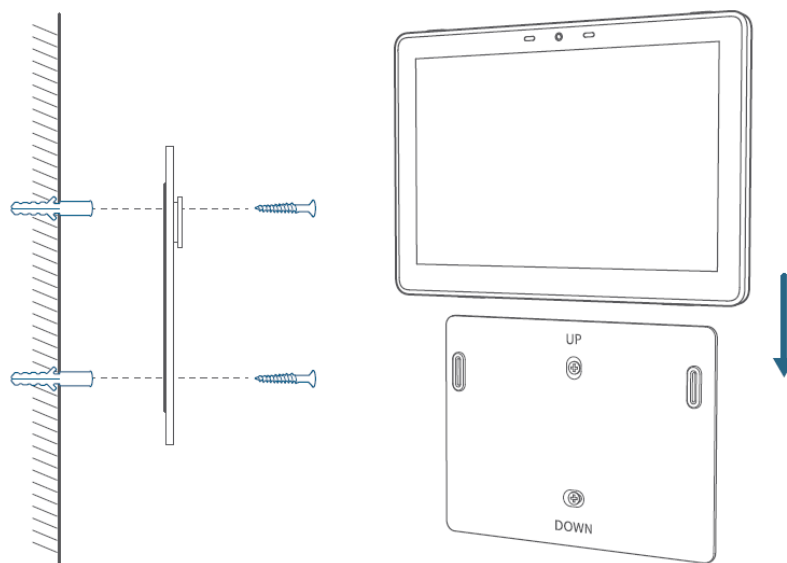


Wall Mount

Option 1. 3M Sticker

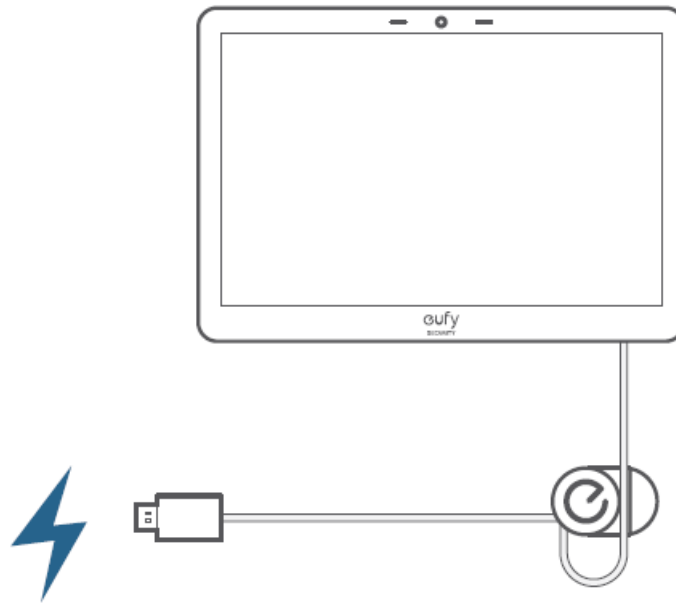


Option 2. Expansion Screws



NOTE: Use the provided cable holder if necessary. Fix the cable holder with the 3M sticker on the back or an

expansion screw.

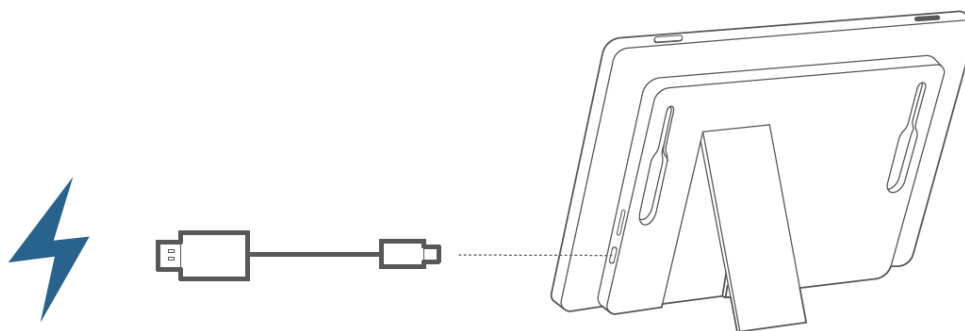


SETUP

1. Download and install the eufy Security app, then sign up for an account.



2. Power the display.



3. On the display, follow on-screen instructions to complete the setup.

NOTICE

The adapter shall be installed near the equipment and shall be easily accessible. Do not use the Device in the environment at too high or too low temperature, never expose the Device under strong sunshine or too wet environment. The suitable temperature for the product and accessories is 0°C to 40°C (32°F to 104°F). When supplying, please place the device in an environment that has a normal room temperature and good ventilation.

It is recommended to supply the device in an environment with a temperature that ranges from 5°C~25°C. Please ensure to use only the adapter offered by the manufacturer. Using unauthorized adapter may cause

danger and violate the authorization of the projector and the guarantee article.

This adapter is for indoor use only. The rated output voltage/current of the adapter is 5Vdc/2A. The plug considered as a disconnect device of adapter.

Your product is designed and manufactured with high-quality materials and components, which can be recycled and reused.

NOTICE (United States Of America)

FCC Statement

This device complies with Part 15 of the FCC Rules. Operation is subject to the following two conditions: (1) this device may not cause harmful interference, and (2) this device must accept any interference received, including interference that may cause undesired operation. Warning: Changes or modifications not expressly approved by the party responsible for compliance could void the user's authority to operate the equipment.

Note: This equipment has been tested and found to comply with the limits for a Class B digital device, pursuant to Part 15 of the FCC Rules. These limits are designed to provide reasonable protection against harmful interference in a residential installation.

This equipment generates uses and can radiate radio frequency energy and, if not installed and used in accordance with the instructions, may cause harmful interference to radio communications. However, there is no guarantee that interference will not occur in a particular installation. If this equipment does cause harmful interference to radio or television reception, which can be determined by turning the equipment off and on, the user is encouraged to try to correct the interference by one or more of the following measures:

1. Reorient or relocate the receiving antenna.
2. Increase the separation between the equipment and receiver.
3. Connect the equipment into an outlet on a circuit different from that to which the receiver is connected.
4. Consult the dealer or an experienced radio/TV technician for help.

FCC Radio Frequency Exposure Statement

The device has been evaluated to meet general RF exposure requirements. The device can be used in fixed/mobile exposure condition. The min separation distance is 20cm.

Notice: Shielded cables

All connections to other computing devices must be made using shielded cables to maintain compliance with FCC regulations.

The following importer is the responsible party

Company Name: POWER MOBILE LIFE, LLC

Address: 10900 NE 8th St, Ste 501, Bellevue WA 98004

Telephone:1-800-988-7973

NOTICE (Canada)

This device complies with Industry Canada licence-exempt RSS standard(s). Operation is subject to the following two conditions:

1. this device may not cause interference, and
2. this device must accept any interference, including interference that may cause undesired operation of the device.

This Class B digital apparatus complies with Canadian ICES-003.

IC RF Statement:

When using the product, maintain a distance of 20cm from the body to ensure compliance with RF exposure requirements.

CUSTOMER SERVICE

Warranty

12-month limited warranty

Call Us

United States

+1 (800) 988 7973 Mon-Fri 9AM-5PM (PT)

United Kingdom

+44 (0) 1604 936 200 Mon-Fri 6AM-11AM (GMT)

Germany

+49 (0) 69 9579 7960 Mon-Fri 6:00-11:00

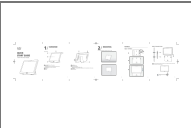
Email Us

support@eufylife.com

Anker Innovations Limited

Room 1318-19, Hollywood Plaza, 610 Nathan Road, Mongkok, Kowloon, Hong Kong

Documents / Resources

	<p>eufy T87A0 Home Security Display [pdf] User Guide T87A0, 2AOKB-T87A0, 2AOKBT87A0, T87A0 Home Security Display, T87A0, Home Security Display</p>
--	--

[Manuals+](#).