



**Contents** [ [hide](#) ]

- [1 eupy T85V0C Video Smart Lock](#)
- [2 Product Usage Instructions](#)
- [3 Download App & Setup](#)
- [4 Matter Configuration](#)
- [5 What's in the Box](#)
- [6 CUSTOMER SERVICE](#)
- [7 FAQ](#)
- [8 Documents / Resources](#)
  - [8.1 References](#)



## **eufy T85V0C Video Smart Lock**



## Specifications

- Product Name: Video Smart Lock S3
- Model Number: 1234567890
- Installation: Exterior and Interior
- Manufacturer: Anker Innovations Limited
- Contact: (US/Canada) +1 (800) 988 7973, (AU) +61 3 8331 4800
- Email: [support@eufy.com](mailto:support@eufy.com) , [service@myeufy.com.au](mailto:service@myeufy.com.au) (AU)
- Address: Unit 56, 8th Floor, Tower 2, Admiralty Centre, 18 Harcourt Road, Hong Kong

## Product Usage Instructions

### Lock Installation

**Follow these steps to install the Video Smart Lock S3:**

1. Mount the lock on the exterior side of the door.
2. Install the interior components of the lock on the interior side of the door.



User Guide

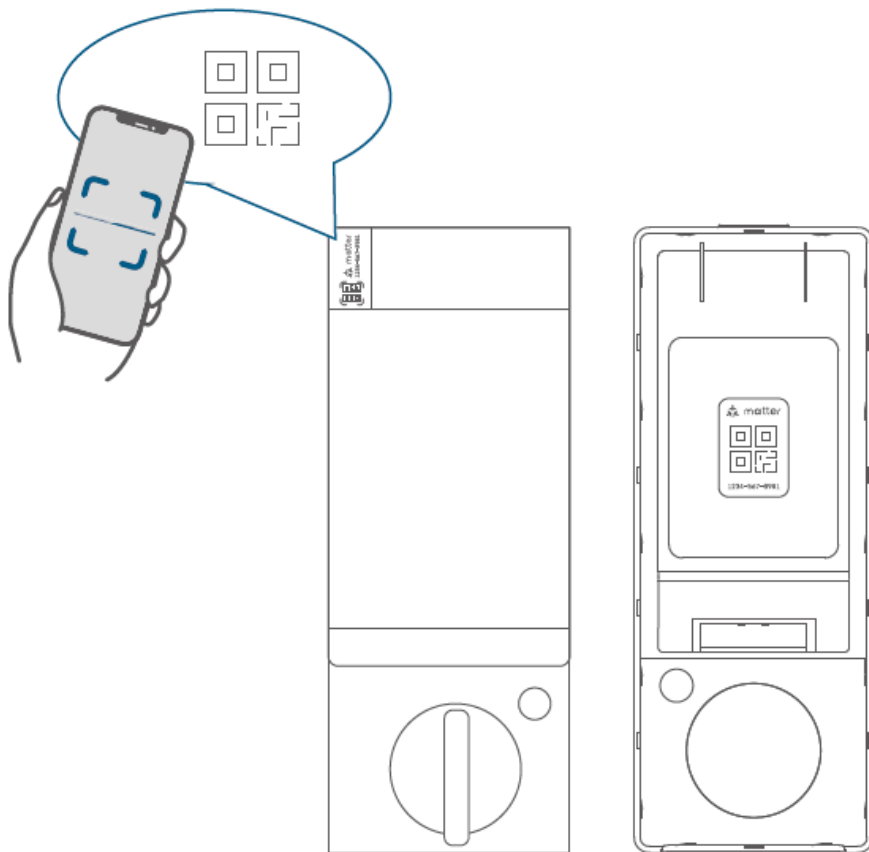
## Download App & Setup

Please use the eufy app to complete the setup before integrating with other platforms. Otherwise, the lock won't function properly.

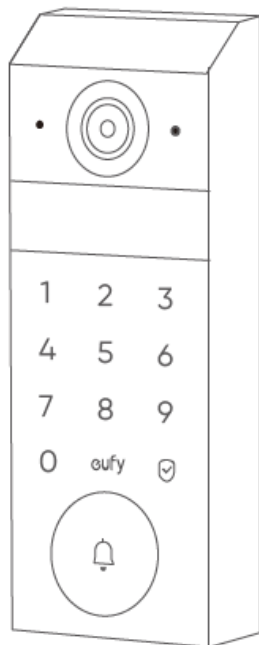


## Matter Configuration

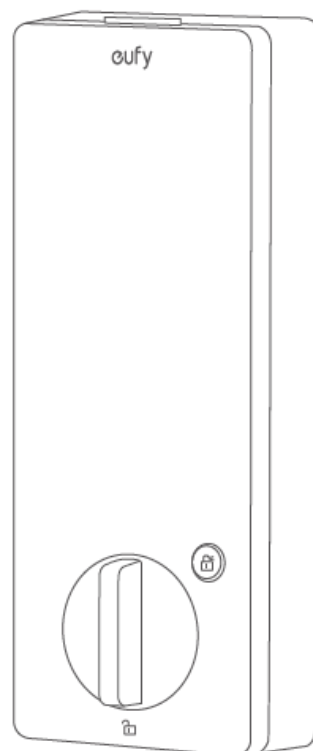
If you are in the US or Canada, contact +1 (800) 988 7973 for Matter setup assistance. For Australia, dial +61 3 8331 4800.



## What's in the Box

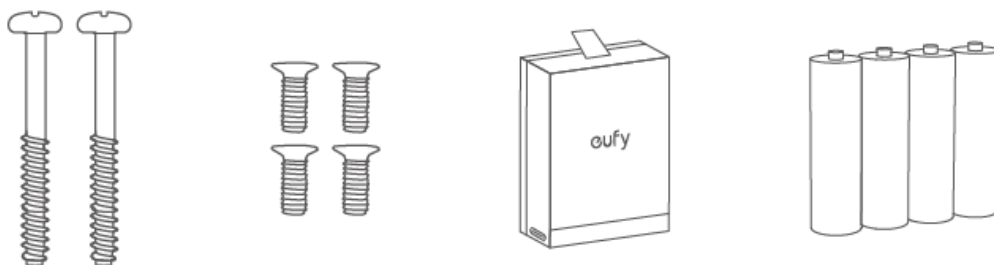


Exterior Assembly

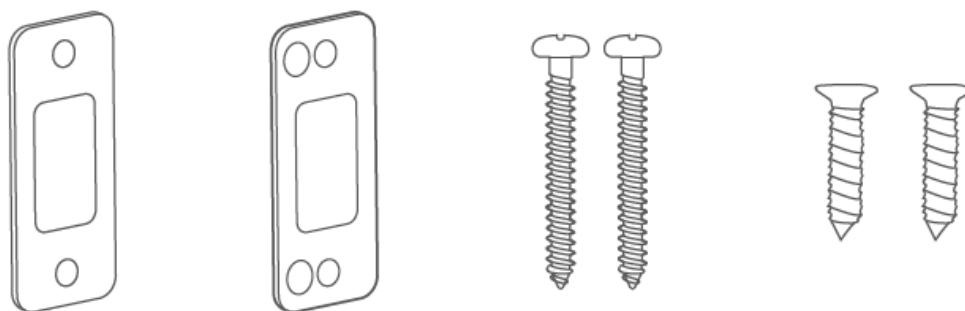


Interior Assembly

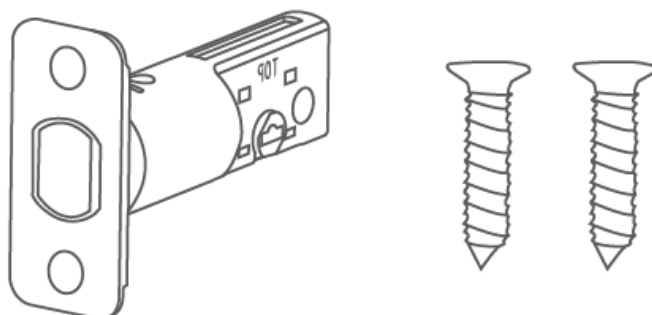
For Interior Assembly Installation



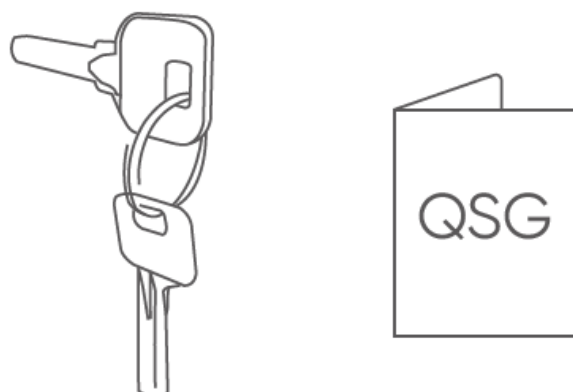
### For Strike Plate Installation



### For Deadbolt Installation



### Others



## CUSTOMER SERVICE

- 18-month limited warranty

- (US/Canada) +1 (800) 988 7973 (AU) +61 3 8331 4800
- [support@eufy.com](mailto:support@eufy.com)
- [service@myeufy.com.au](mailto:service@myeufy.com.au) (AU)

Anker Innovations Limited  
Unit 56, 8th Floor, Tower 2, Admiralty Centre, 18 Harcourt Road, Hong Kong


- @EufyOfficial
- @EufyOfficial
- @EufyOfficial

©Anker Innovations Limited. All rights reserved, registered in the United States and other countries.

FAQ

- **Q: What should I do if the lock is not functioning properly after setup?**  
A: Ensure that you have completed the setup using the eufy app before integrating with other platforms. If issues persist, contact customer support for assistance.
- **Q: How do I contact customer support?**  
A: For support inquiries, email [support@eufy.com](mailto:support@eufy.com) or [service@myeufy.com.au](mailto:service@myeufy.com.au) (AU) or call the provided contact numbers based on your location.

Documents / Resources

	<a href="#">eufy T85V0C Video Smart Lock [pdf]</a> User Guide T85V0C, T85V0C Video Smart Lock, Video Smart Lock, Smart Lock, Lock
---	--

References

- [User Manual](#)

# Leave a comment

Your email address will not be published. Required fields are marked \*

Comment \*

Name

Email

Website

☐ Save my name, email, and website in this browser for the next time I comment.

**Post Comment**

**Search:**

e.g. whirlpool wrf535swhz

**Search**

[Manuals+](#) | [Upload](#) | [Deep Search](#) | [Privacy Policy](#) | [@manuals.plus](#) | [YouTube](#)

This website is an independent publication and is neither affiliated with nor endorsed by any of the trademark owners. The "Bluetooth®" word mark and logos are registered trademarks owned by Bluetooth SIG, Inc. The "Wi-Fi®" word mark and logos are registered trademarks owned by the Wi-Fi Alliance. Any use of these marks on this website does not imply any affiliation with or endorsement.