



eufy S380 HomeBase Security Device User Guide

[Home](#) » [Eufy](#) » eufy S380 HomeBase Security Device User Guide 

Contents

- [1 eufy S380 HomeBase Security Device](#)
- [2 S380 HomeBase QUICK START GUIDE](#)
- [3 EXPANDING STORAGE](#)
- [4 Install Your Hard Drive](#)
- [5 CONNECTING S380 HOMEBASE](#)
- [6 ADDING TO EUFY SECURITY APP](#)
- [7 ADDING EUFY SECURITY DEVICES TO S380 HOMEBASE](#)
- [8 SAFETY](#)
- [9 NOTICE](#)
- [10 Declaration of Conformity](#)
- [11 Documents / Resources](#)
 - [11.1 References](#)
- [12 Related Posts](#)



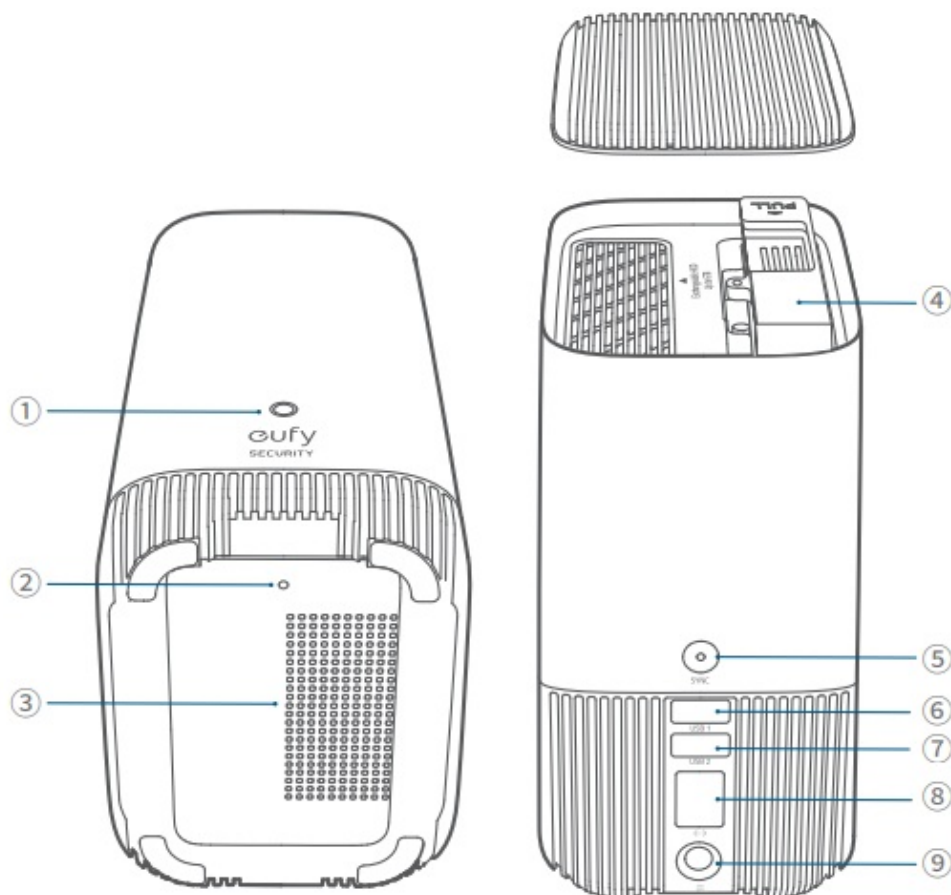
eufy S380 HomeBase Security Device



S380 HomeBase QUICK START GUIDE

AT A GLANCE S380 HomeBase

Model: T8030



1. Status LED
2. Reset Hole
3. Speaker
4. Hard Drive Bracket

5. SYNC / ALARM OFF Button
6. USB Port 1 (Output: 5Vdc/2.4A)
7. USB Port 2 (Output: 5Vdc/0.7A)
8. Ethernet Port
9. Power Port

EXPANDING STORAGE

(OPTIONAL)

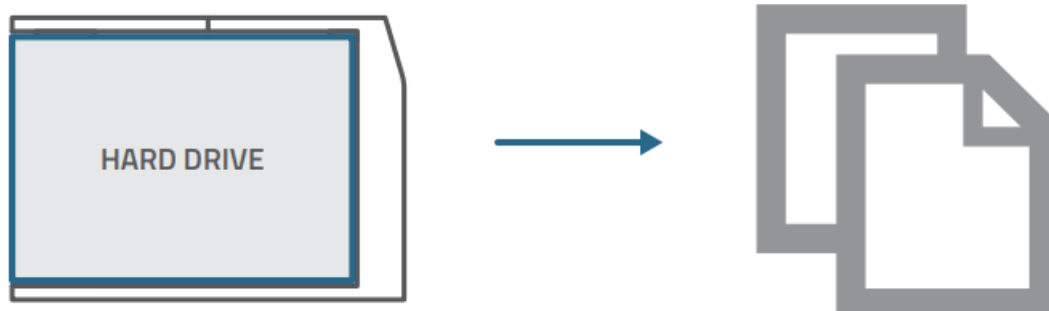
S380 HomeBase comes with 16 GB of storage for saving video recordings and allows you to add an additional hard drive to expand the space.

Prepare Your Hard Drive

Your hard drive must meet the following requirements:

Type	Hard disk drive (HDD) or solid state drive (SSD) that uses the SATA interface
Size	2.5 inch
Capacity	Unlimited
Recommended	Western Digital, Seagate, SAMSUNG, Kingston, PNY, Crucial, SanDisk

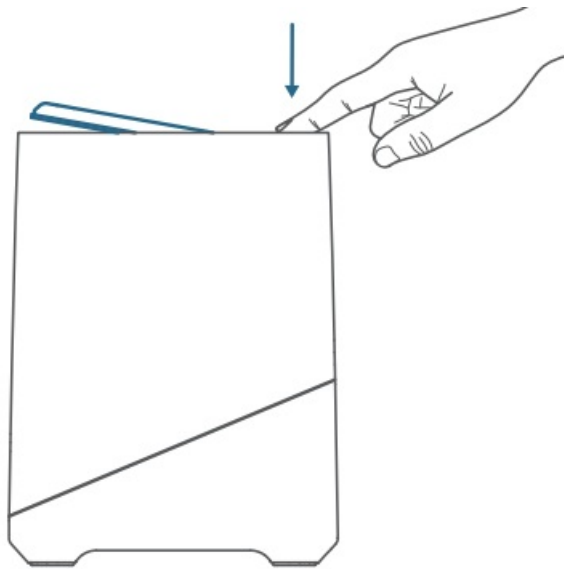
Transfer all the data in your hard drive to a secure location before adding it to S380 HomeBase.



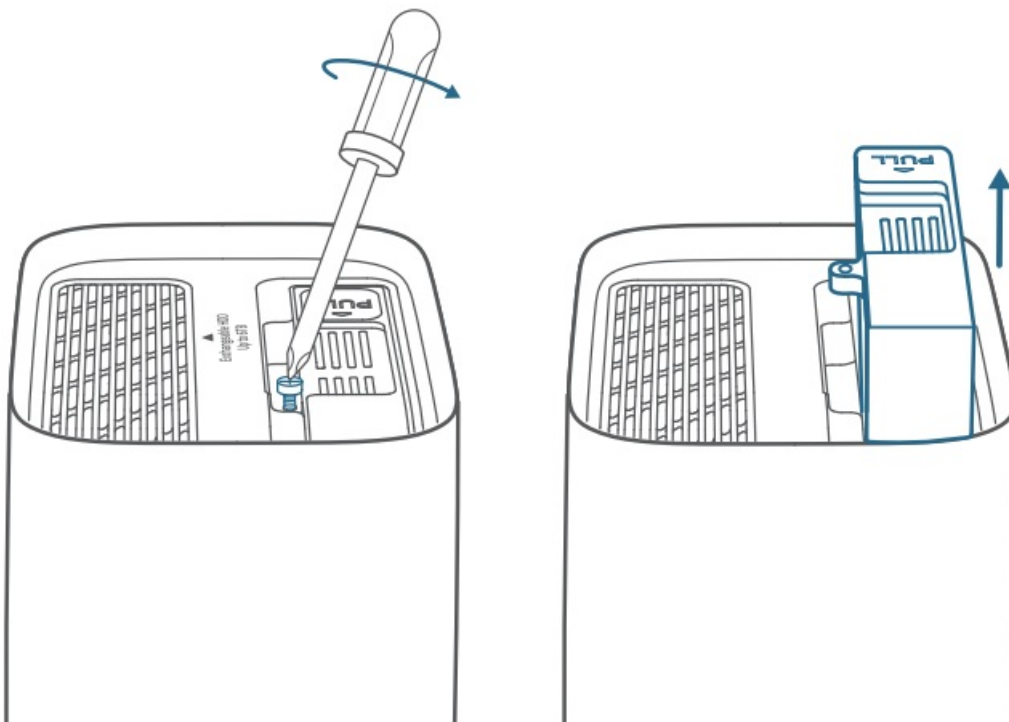
Install Your Hard Drive

S380 HomeBase must be powered off when you install or remove a hard drive.

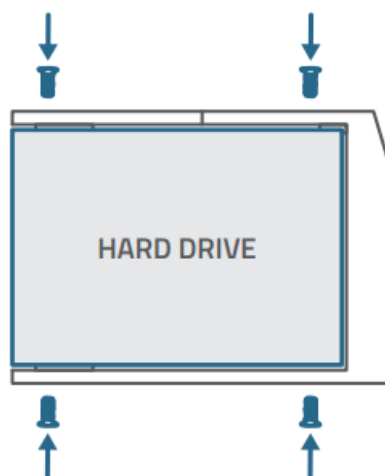
1. Push down the top lid to remove it.



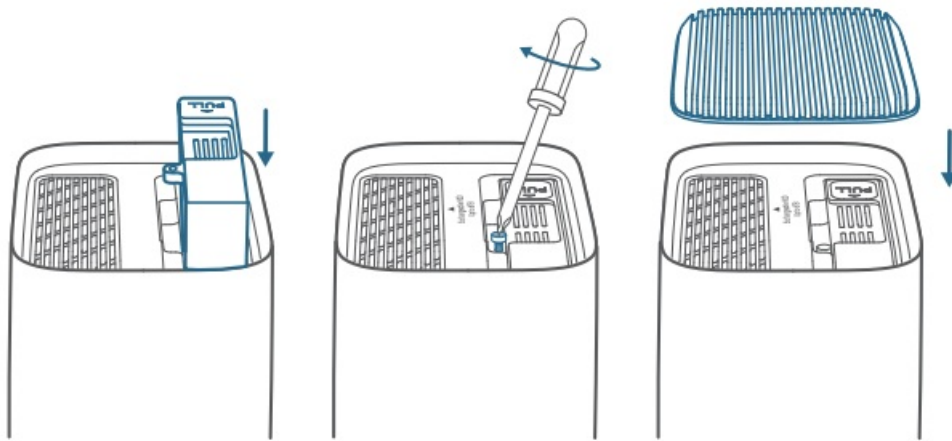
2. Loosen the screw, then pull out the hard drive bracket.



3. Fix your hard drive to the bracket with the provided screws.



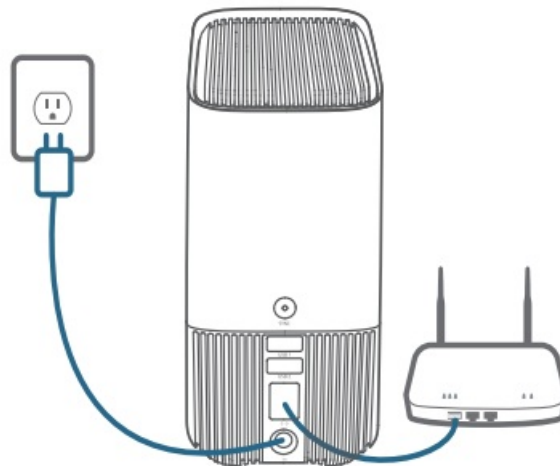
4. Insert and screw the bracket back to S380 HomeBase, then put the top lid back into place.



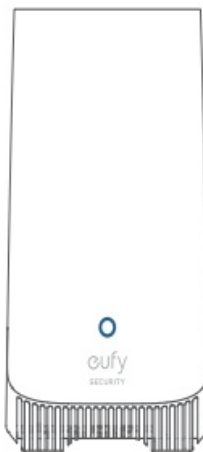
- You can follow the steps above to expand the storage whenever necessary.
- A new hard drive must be initialized through the eufy Security app to work with S380 HomeBase.

CONNECTING S380 HOMEBASE

1. Power on and connect S380 HomeBase to your router.



2. Wait for a moment (up to 1 min) until the status LED turns blue.

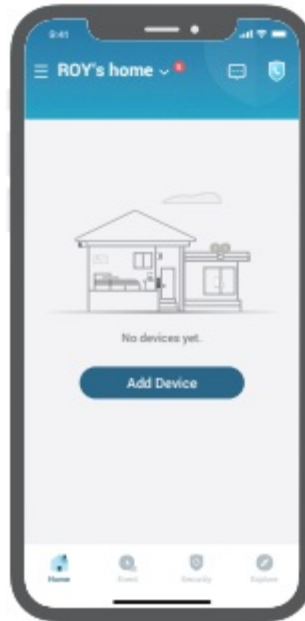


ADDING TO EUFY SECURITY APP

1. Download and install the eufy Security app, and sign up for an account.



2. Add S380 HomeBase to your device list, and follow the in-app instructions to complete the setup.



ADDING EUFY SECURITY DEVICES TO S380 HOMEBASE

Follow the in-app instructions to add your eufy Security devices to the S380 HomeBase.

- One S380 HomeBase can pair up to 16 cameras.

SAFETY

- Do not use the device in the environment at a too high or too low temperature, never expose the device to strong sunshine or too wet environment.
- The suitable temperature for T8030 and accessories is -10°C to 45°C .
- It is recommended to supply the device in an environment with a temperature that ranges from 5°C~25°C.
- When supplying, please place the device in an environment that has a normal room temperature and good ventilation.
- The adapter shall be installed near the equipment and shall be easily accessible.
- Please ensure to use only the adapter offered by the manufacturer. Using unauthorized adapter may cause danger and violate the authorization of the device and the guarantee article.
- This adapter is for indoor use only. The adapter type (for S380 HomeBase) is KA2401A-1202000DE, rated output voltage/current is 12 Vdc/2A. The plug is considered as disconnect device of adapter.

NOTICE

NOTICE (Europe and United Kingdom)



This product complies with the radio interference requirements of the European Community.

Declaration of Conformity

Hereby, Anker Innovations Limited declares that this device is in compliance with the essential requirements and other relevant provisions of Directive 2014/53/EU. For the declaration of conformity, visit the website:

<https://uk.eufylife.com>.



This product complies with the radio interference requirements of the United Kingdom

Declaration of Conformity

Hereby, Anker Innovations Limited declares that this device is in compliance with Radio Equipment Regulations 2017(SI 2017/1206). The full text of the UK declaration of conformity is available at the following internet address:

<https://uk.eufylife.com>.

RF exposure information:

The Maximum Permissible Exposure (MPE) level has been calculated based on a distance of d=20 cm between the device and the human body. To maintain compliance with RF exposure requirement, use products that maintain a 20cm distance between the device and human body.

Frequency bands and power as below:

Function	Bandes	Operation Frequency	Max.Power
Sub-1G for T8030	Sub-1G	866-866.8 MHz	ERP 12.973 dBm
Wi-Fi for T8030	2.4GHz	2412-2472MHz	EIRP 19.58 dBm

The following importer is the responsible party (contract for EU matters): Anker Innovations Deutschland GmbH I Georg-Muche-Strasse 3, 80807 Munich, Germany

The following importer is the responsible party (contract for UK matters): Anker Technology (UK) Limited I GNR8, 49 Clarendon Road, Watford, Hertfordshire, WD17 1HP, United Kingdom



- Your product is designed and manufactured with high quality materials and components, which can be recycled and reused.
- This symbol means the product must not be discarded as household waste, and should be delivered to an appropriate collection facility for recycling. Proper disposal and recycling helps protect natural resources, human health and the environment. For more information on disposal and recycling of this product, contact your local municipality, disposal service, or the shop where you bought this product.

12-month limited warranty

United States

+1 (800) 988 7973

Mon-Sat 6:15AM-6:45PM(PT) Sun 6:15AM-5:45PM(PT)

United Kingdom

+44 (0) 1604 936 200

Mon-Sun 6:00-19:00

Germany

+49 (0) 69 9579 7960

Mo-Fr 8:00-16:00 Sa 9:00-16:00

support@eufylife.com



@EufyOfficial



@EufyOfficial

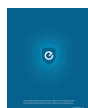


@EufyOfficial

Anker Innovations Limited

Room 1318-19, Hollywood Plaza, 610 Nathan Road, Mongkok, Kowloon, Hong Kong

Documents / Resources



[eufy S380 HomeBase Security Device](#) [pdf] User Guide

S380 HomeBase Security Device, S380, HomeBase Security Device, Security Device, Device, T8030

References

- [eufy | Smart Home Simplified](#)
- [eufy | Smart Home Simplified](#)