



eufy S231 Security Smart Lock User Guide

[Home](#) » [Eufy](#) » eufy S231 Security Smart Lock User Guide 



QUICK START GUIDE

eufy S231 Smart Lock / eufy S230 Smart Lock

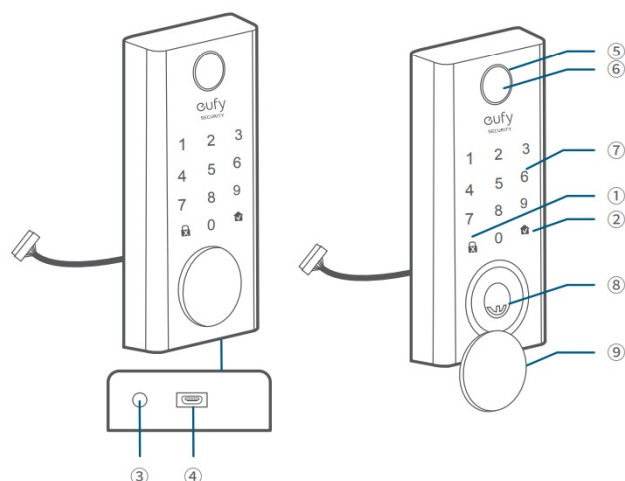


Contents

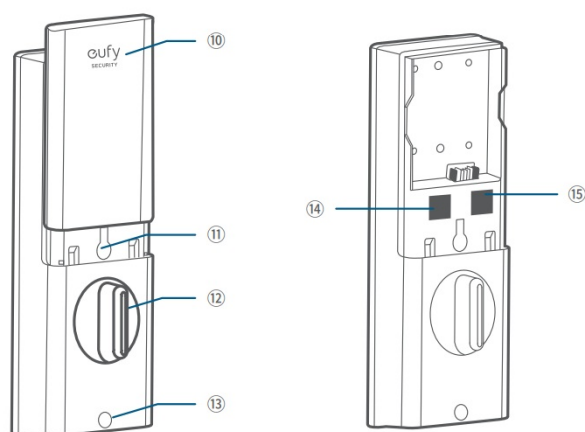
- 1 OVERVIEW
- 2 WHAT'S INCLUDED
- 3 INSTALLATION
- 4 SETTING UP THE SYSTEM
- 5 NOTICE
- 6 FCC Statement
- 7 Customer Service
- 8 Documents / Resources
 - 8.1 References

OVERVIEW

Front View



Rear View

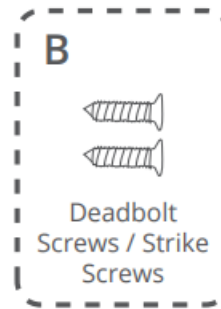
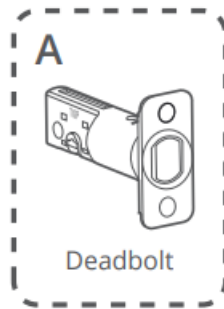


1. One-touch Locking Button
2. Status Light
 - Blue: Door unlocked
 - Orange: Door locked
 - Red: Abnormal state
3. Reboot Button
4. Micro USB Port
5. Fingerprint LED
6. Fingerprint Button
7. Touchscreen
8. Cylinder
9. Cylinder Cover
10. Battery Cover
11. Setup Button
12. Thumbturn
13. Screw Hole
14. QR Code
15. Serial Number

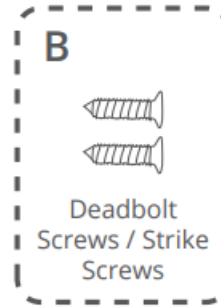
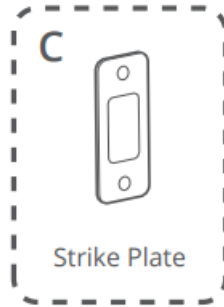
WHAT'S INCLUDED

For Smart Lock Installation

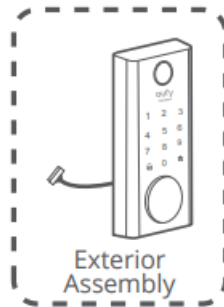
Step 2. Deadbolt Installation Set



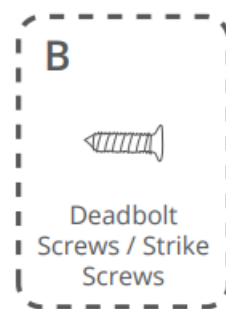
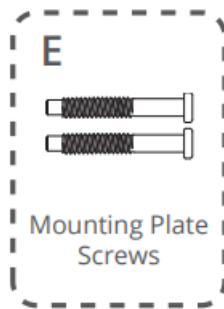
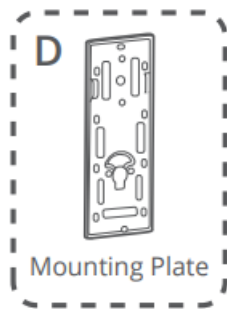
Step 3. Strike Plate Installation Set



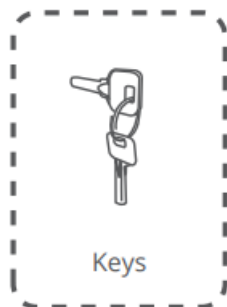
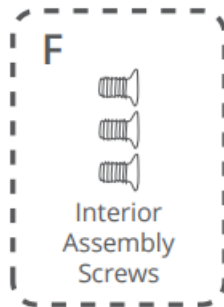
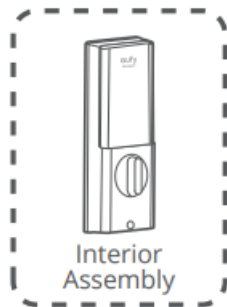
Step 4. Exterior Assembly



Step 5. Mounting Plate Installation Set



Step 6. Interior Assembly Installation Set

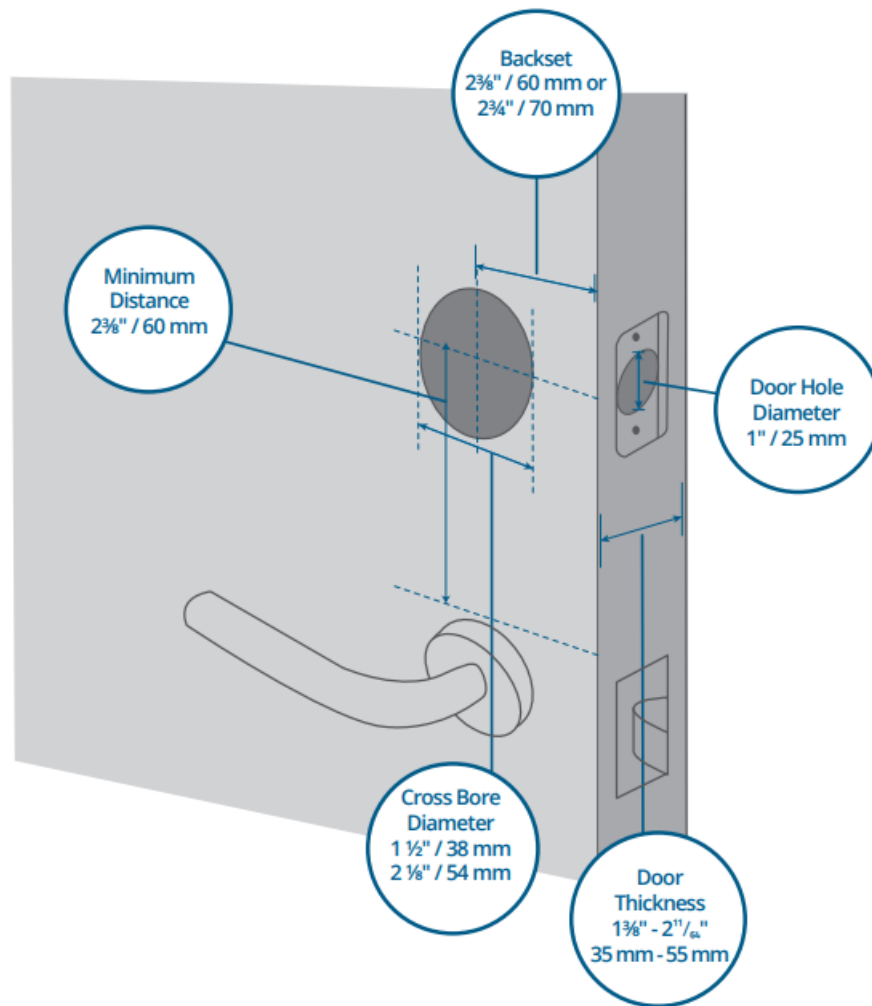


 Make sure to use eufy deadbolt and screw fittings, otherwise it may cause usage problems.

INSTALLATION

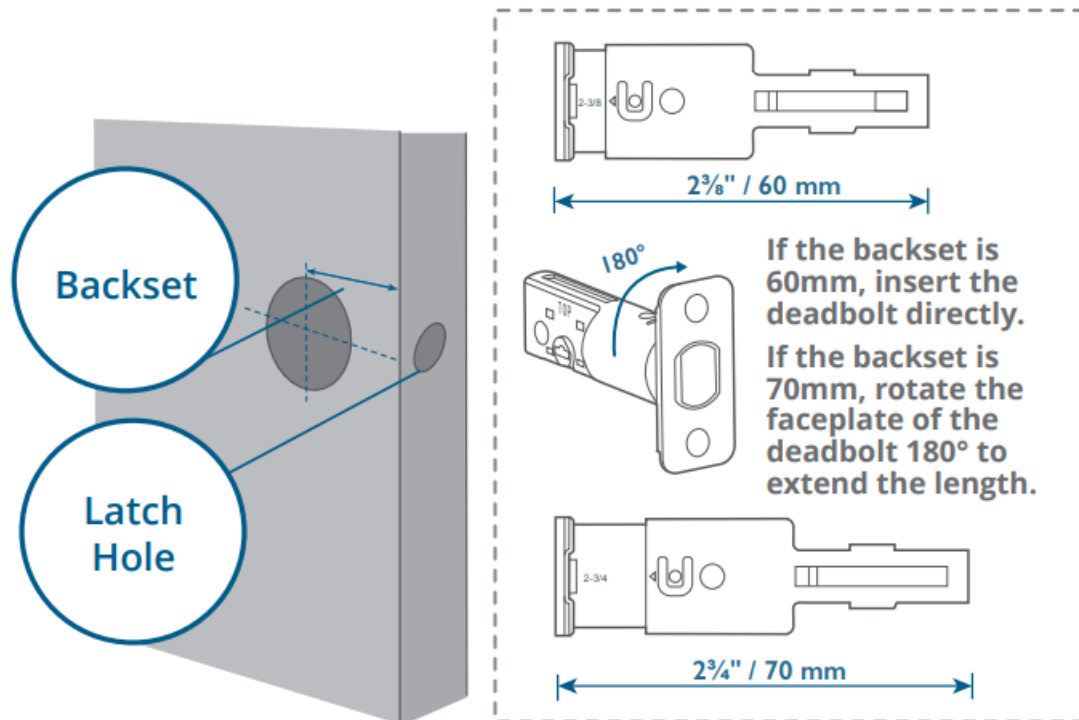
Step 1. Prepare the Door

1. Remove the existing lock and check your door.
2. Check if your door has holes like the one below. Standard US doors are already compatible.
 - If not, follow the template to drill holes on your door.

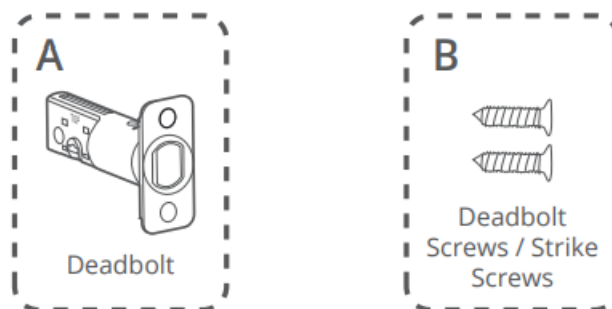


Step 2. Install Deadbolt

1. Check your door to see if the deadbolt requires adjustment.

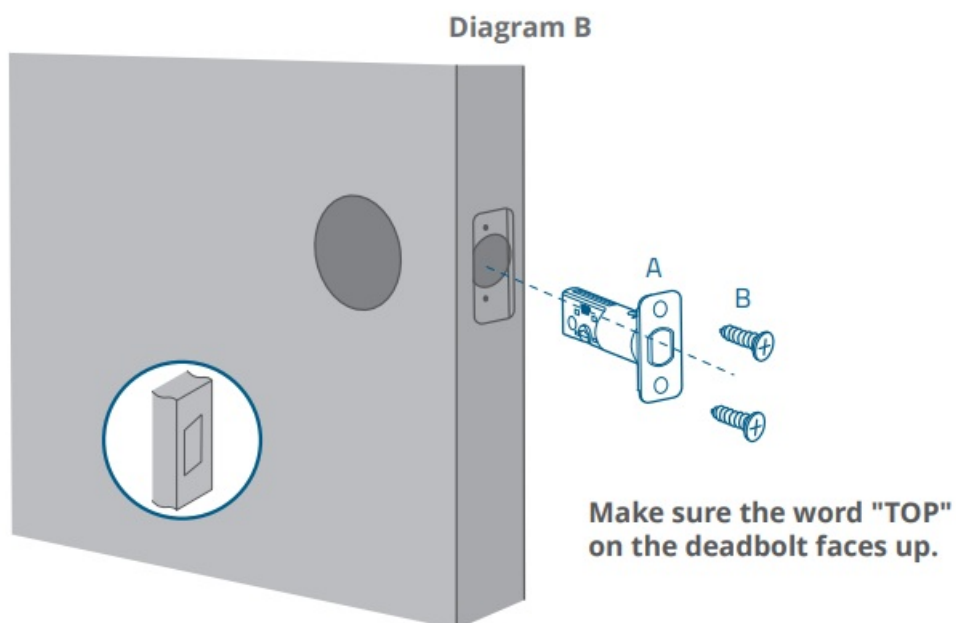
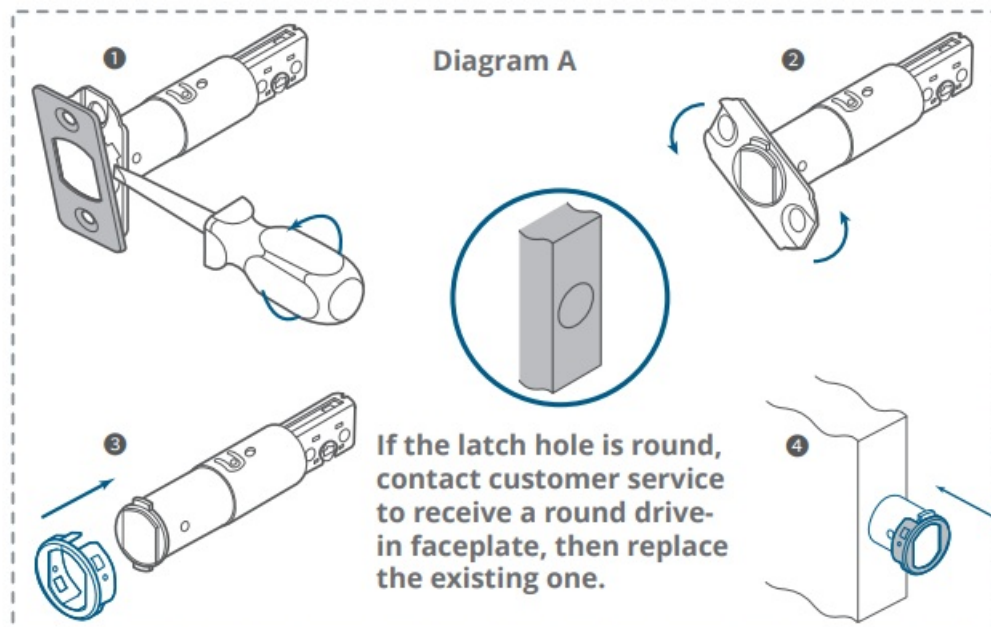


2. Insert and screw the deadbolt into the doorframe.



*Check the latch hole before inserting the deadbolt.

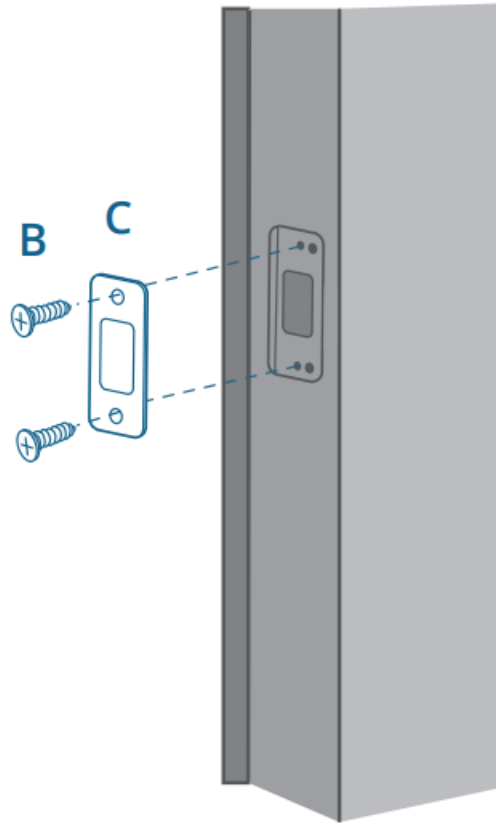
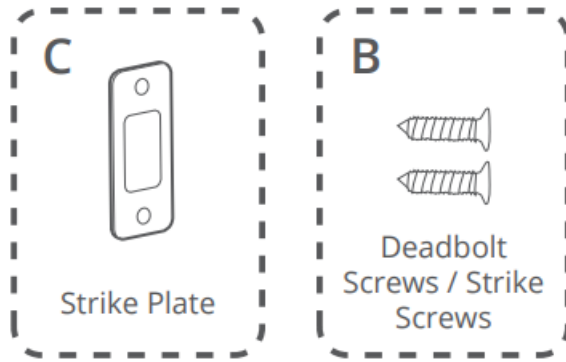
If the latch hole is round, refer to Diagram A. If the latch hole is rectangular, refer to Diagram B.



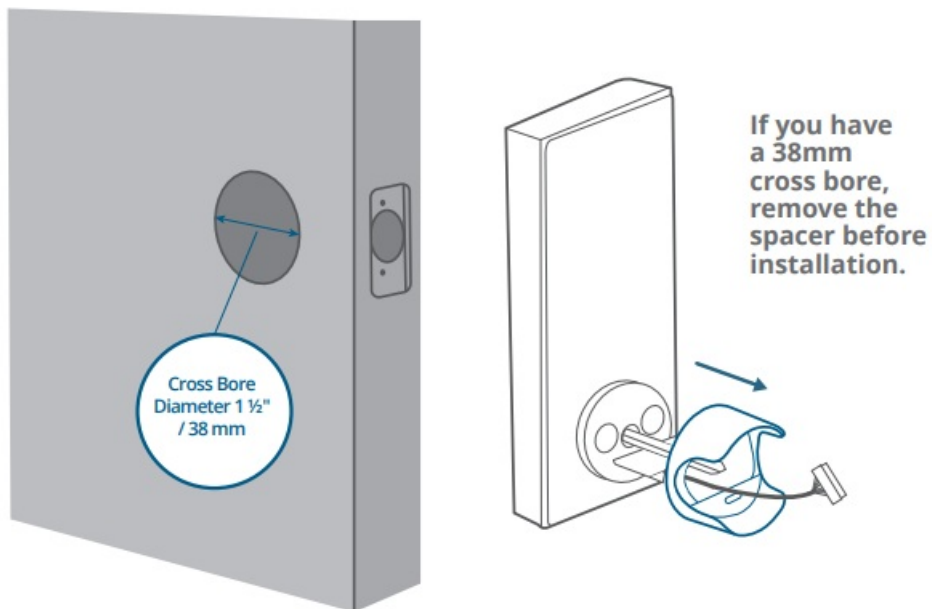
Step 3. Install the Strike Plate

If you have an existing strike plate installed, skip this step.
To install the strike plate:

1. Align the strike plate with the center hole of the deadbolt.
2. Secure the strike plate with strike screws. Make sure the plate is placed in the correct direction.

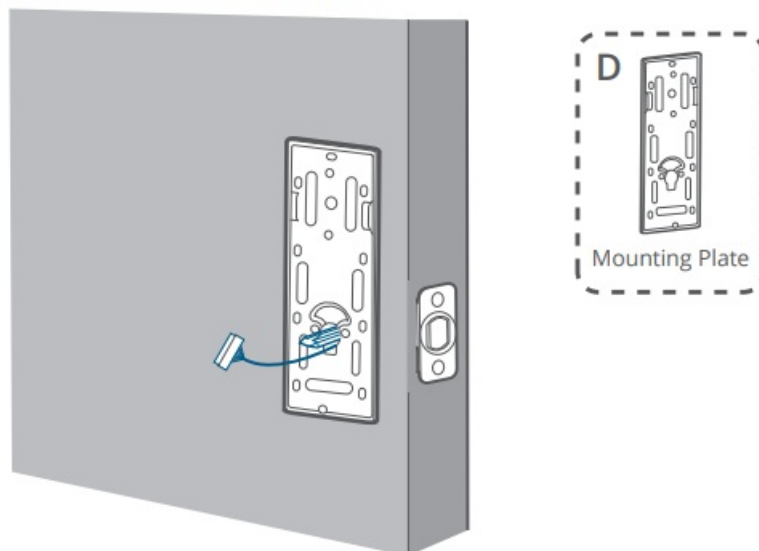


Step 4. Install Exterior Assembly

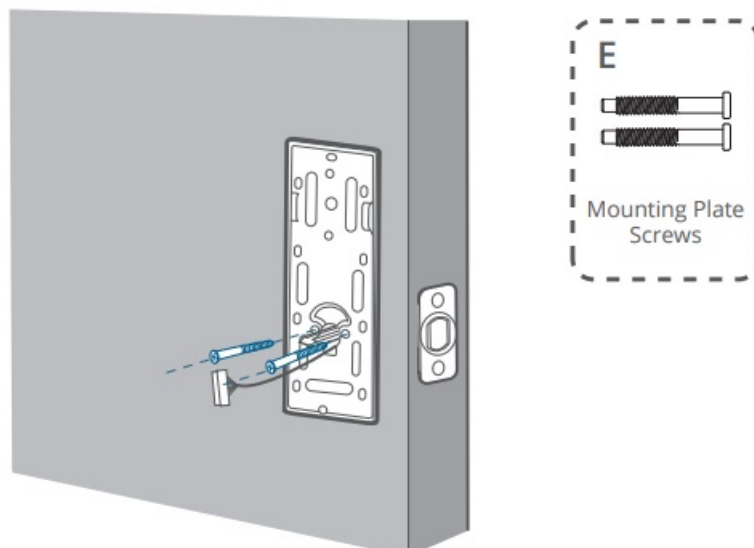


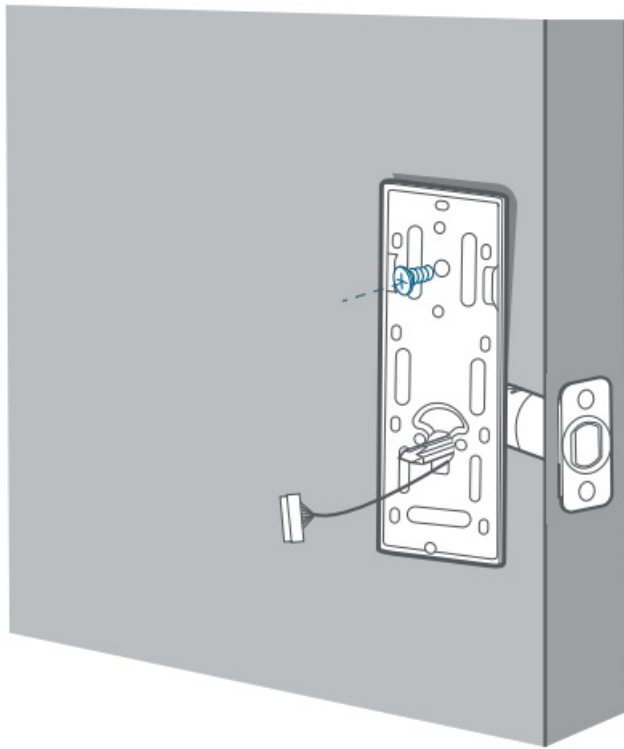
Step 5. Install the Mounting Plate

1. Route the cable through the mounting plate.



2. Tightly fasten the screws in place. Set the screws with your hands, then use a screwdriver to secure them.



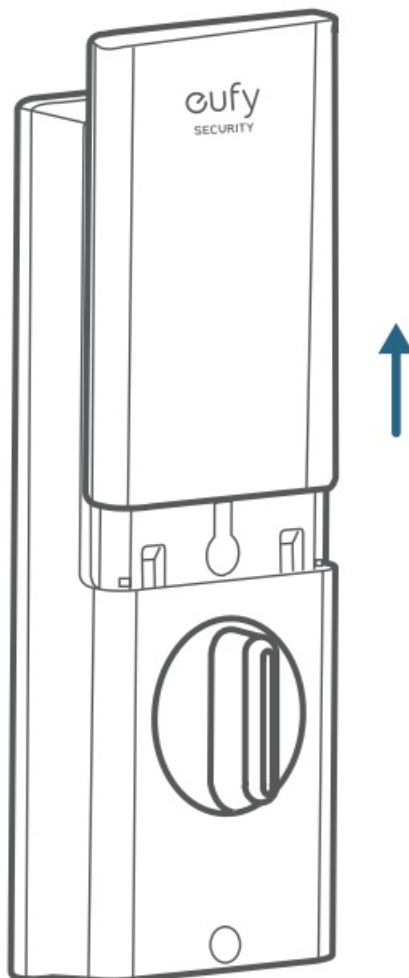


Optional: If the mounting plate is not fastened tightly to the door, use an additional screw (B).

Step 6. Install the Interior Assembly

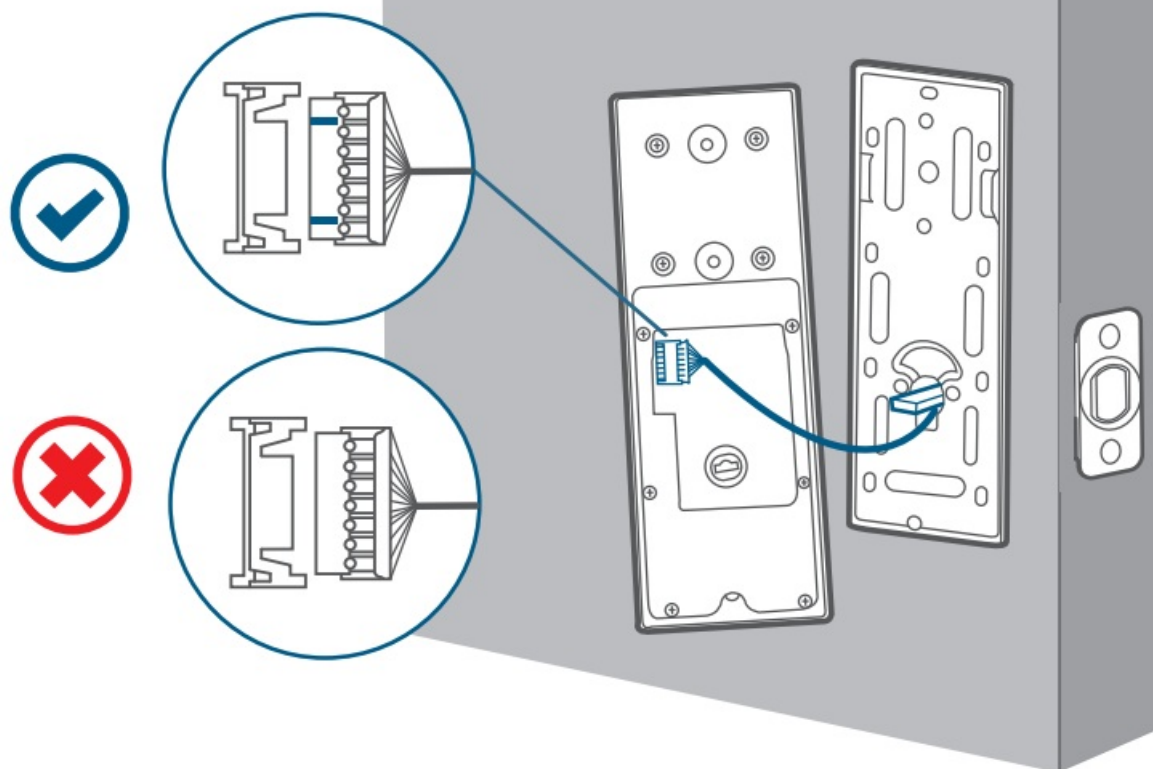
To install the Interior Assembly:

1. Remove the battery cover.



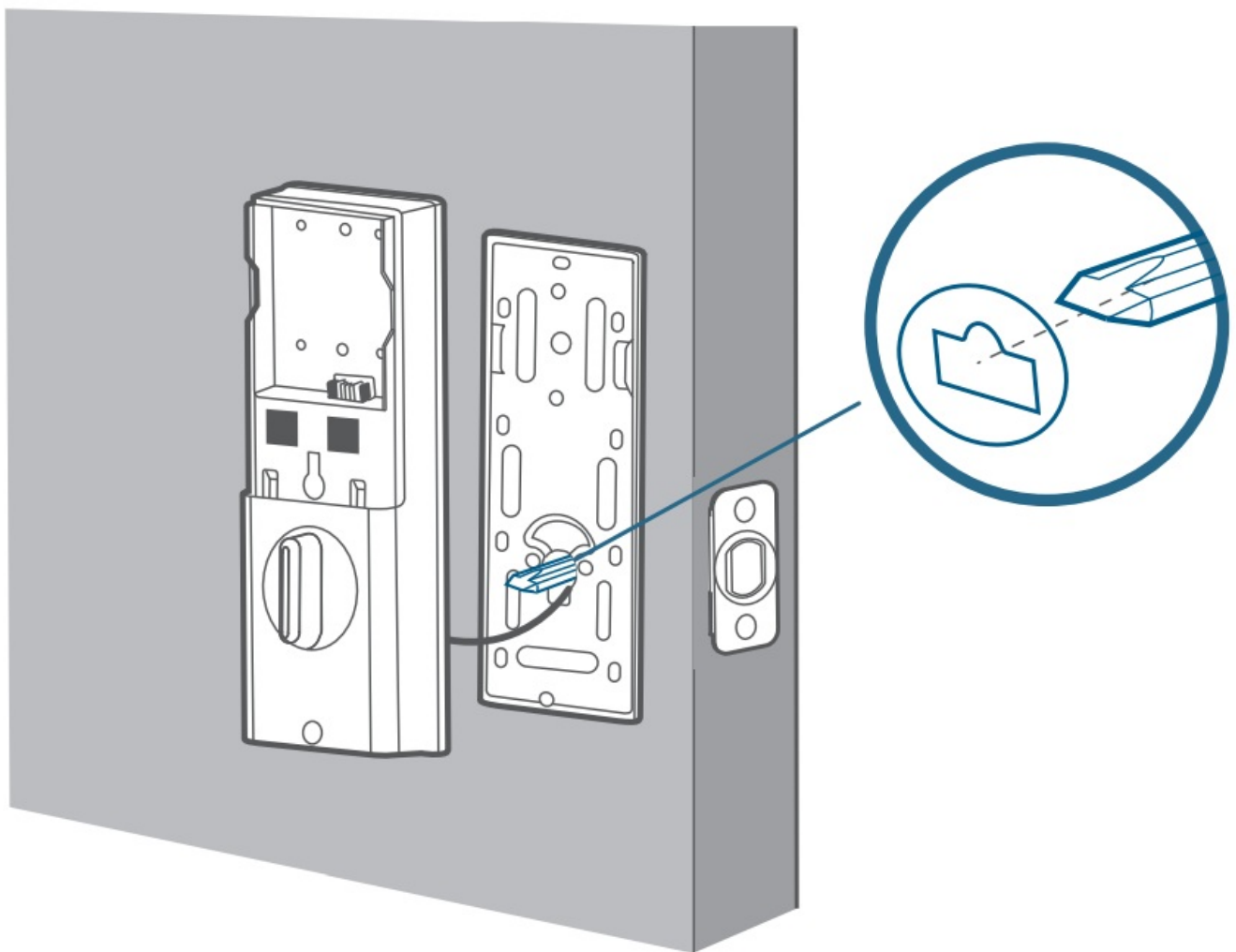
2. Match the wire connector from the circuit board with the one from the interior assembly as illustrated. The wire connector can only be plugged into the socket in one way. Make sure you match the dot on the connector with

the pin on the circuit board **correctly**.

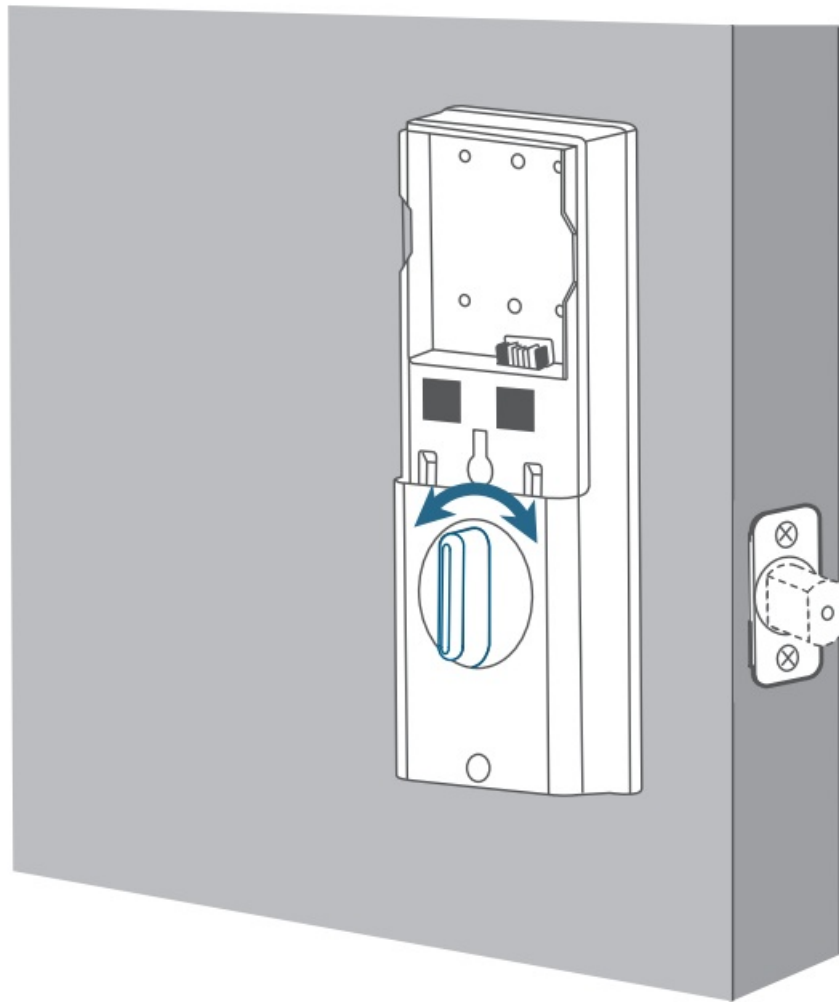


Note: Check carefully whether the wire is stuck or tangled. If the wire is stuck, re-install the Interior Assembly.

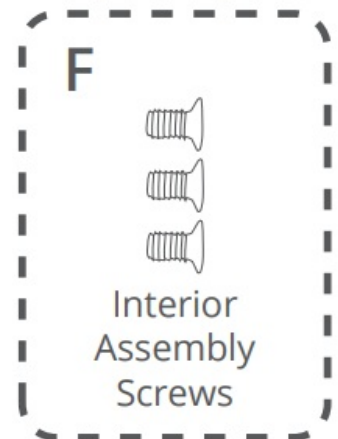
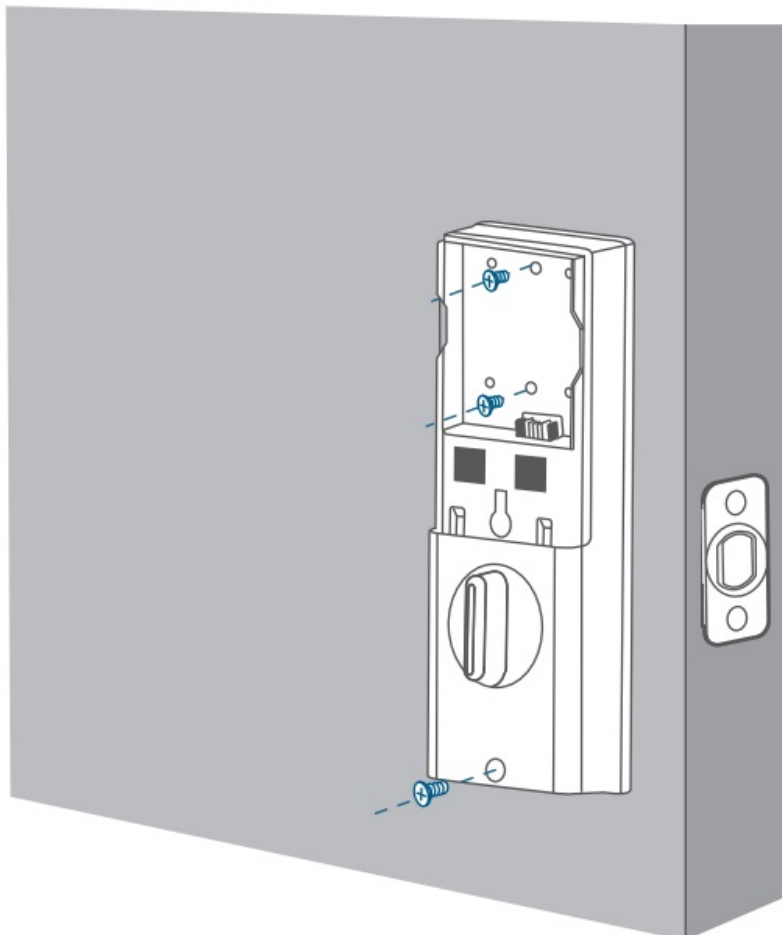
3. Align the tailpiece with the key cylinder.



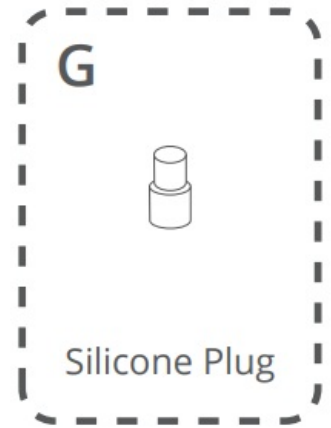
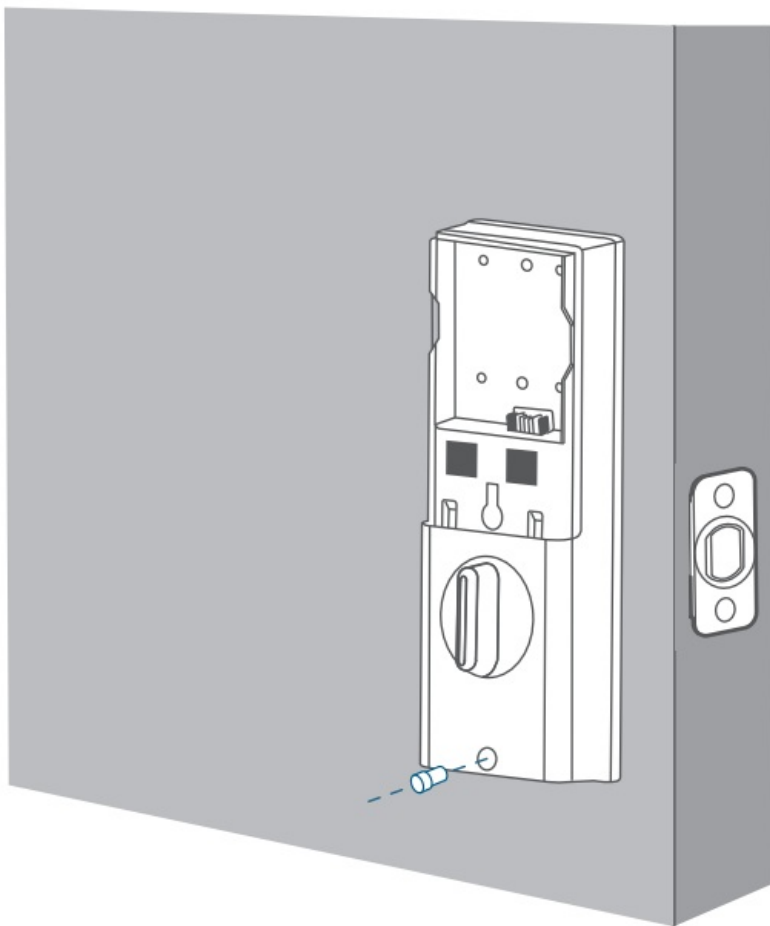
4. Turn the thumbturn to check whether the deadbolt is retracted. If the deadbolt does not work smoothly, adjust the screws and install the mounting plate again.



5. Secure the provided screws into the interior assembly.

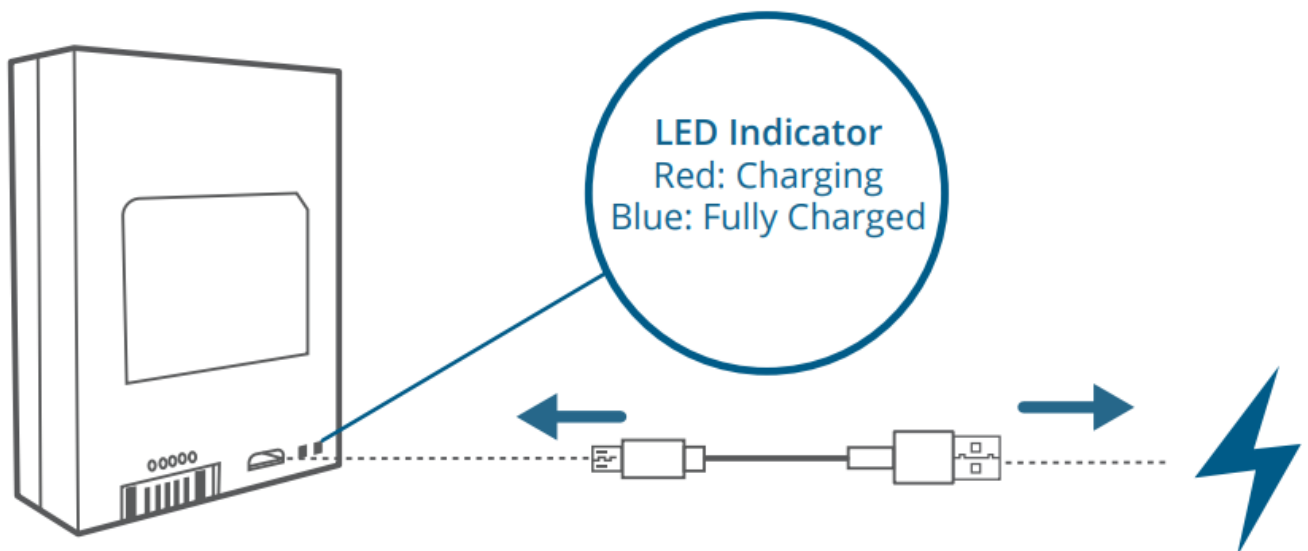


6. Use the plug to cover the screw hole at the bottom of the Smart Lock.

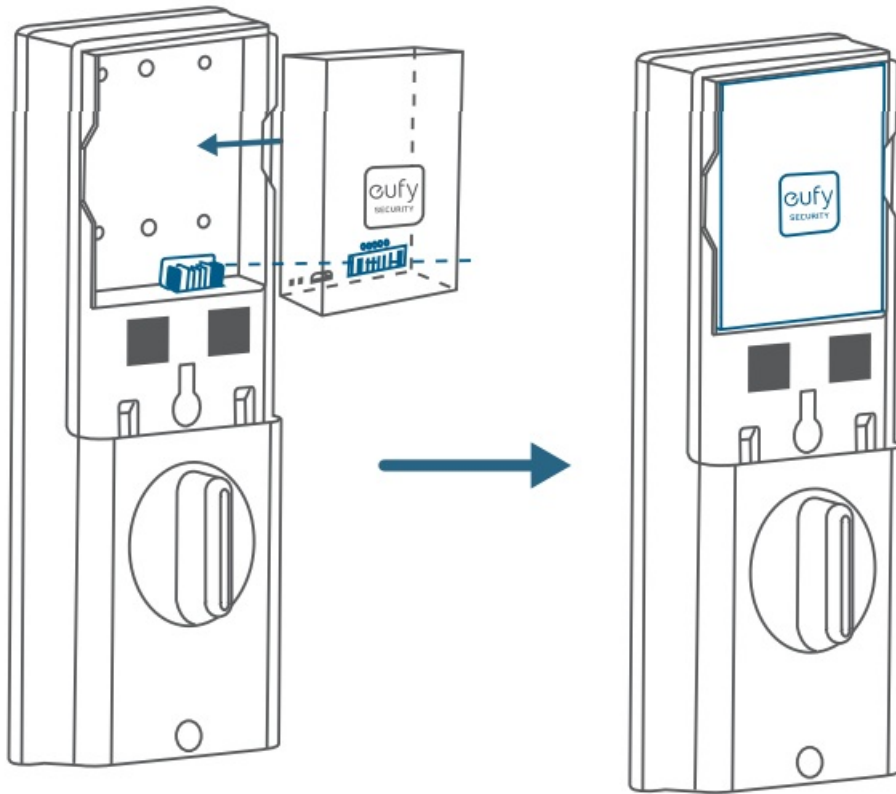


Step 7. Install the Battery

1. Fully charge the battery before first use. It might take about 6 hours.



2. Align the pin connector on the battery with the pin as illustrated below and slide the battery into the battery compartment.



SETTING UP THE SYSTEM

1. Download and install the eufy Security app, then sign up for an account.



2. Follow the in-app instructions to add the S230 / S231 Smart Lock to your device list.
 - Please visit <https://support.eufylife.com/s/> or scan the QR code for more information.



NOTICE

Do not use the Device in the environment at too high or too low temperature, never expose the Device under strong sunshine or too wet environment.

The suitable temperature for the product and accessories is -10°C to 50°C (Charging temperature: 0°C to 40°C). When supplying, please place the device in an environment that has a normal room temperature and good ventilation.

It is recommended to supply the device in an environment with a temperature that ranges from 5°C – 25°C (41°F – 77°F).

The equipment is only suitable for mounting at heights ≤ 2 m.

Do not use the product in any way other than described herein in order to avoid personal injury or property damage.

User should comply with the laws and regulations of the corresponding countries and regions where the equipment is located (used), abide by professional ethics, pay attention to safety obligations, and strictly prohibit the use of our products or equipment for any illegal purposes. Our company will not be responsible for any violators' legal liability under any circumstances.



This product is designed and manufactured with high quality materials and components, which can be recycled and reused.



This symbol means the product must not be discarded as household waste, and should be delivered to an appropriate collection facility for recycling. Proper disposal and recycling helps protect natural resources, human health and the environment. For more information on disposal and recycling of this product, contact your local municipality, disposal service, or the shop where you bought this product.

Warning:

- replacement of a battery with an incorrect type that can defeat a safeguard;
- disposal of a battery into fire or a hot oven, or mechanically crushing or cutting of a battery, that can result in an explosion;
- leaving a battery in an extremely high temperature surrounding environment that can result in an explosion or the leakage of flammable liquid or gas; and
- a battery subjected to extremely low air pressure that may result in an explosion or the leakage of flammable liquid or gas.



CAUTION RISK OF EXPLOSION IF BATTERY IS REPLACED BY AN INCORRECT TYPE. DISPOSE OF USED BATTERIES ACCORDING TO THE INSTRUCTIONS

FCC Statement

This device complies with Part 15 of the FCC Rules. Operation is subject to the following two conditions: (1) this device may not cause harmful interference, and (2) this device must accept any interference received, including interference that may cause undesired operation.

Warning: Changes or modifications not expressly approved by the party responsible for compliance could void the user's authority to operate the equipment.

Note: This equipment has been tested and found to comply with the limits for a Class B digital device, pursuant to Part 15 of the FCC Rules. These limits are designed to provide reasonable protection against harmful interference in a residential installation.

This equipment generates uses and can radiate radio frequency energy and, if not installed and used in accordance with the instructions, may cause harmful interference to radio communications. However, there is no guarantee that interference will not occur in a particular installation. If this equipment does cause harmful interference to radio or television reception, which can be determined by turning the equipment off and on, the user is encouraged to try to correct the interference by one or more of the following measures: (1) Reorient or relocate the receiving antenna. (2) Increase the separation between the equipment and receiver. (3) Connect the equipment into an outlet on a circuit different from that to which the receiver is connected. (4) Consult the dealer or an experienced radio/ TV technician for help.

FCC Radio Frequency Exposure Statement

The device has been evaluated to meet general RF exposure requirements. The device can be used in fixed/mobile exposure condition. The min separation distance is 20cm.

Notice: Shielded cables

All connections to other computing devices must be made using shielded cables to maintain compliance with FCC regulations.

The following importer is the responsible party Company Name: POWER MOBILE LIFE, LLC Address: 10900 NE 8th St, Ste 501, Bellevue WA 98004

Telephone:1-800-988-7973

IC Statement

This device complies with Industry Canada licence-exempt RSS standard(s).

Operation is subject to the following two conditions:

(1) this device may not cause interference, and (2) this device must accept any interference, including interference that may cause undesired operation of the device.

This Class B digital apparatus complies with Canadian ICES-003.

Cet appareil numérique de la classe B est conforme à la norme NMB-003 du Canada.

IC RF Statement:

When using the product, maintain a distance of 20cm from the body to ensure compliance with RF exposure requirements.

Customer Service



12-month limited warranty



(US) +1 (800) 988-7973

(UK) +44 (0) 1604 936200

(DE) +49 (0) 69 9579 7960

+86 400 0550 036

+81 03 4455 7823

(AU) +61 3 8331 4800

(Egypt) +20 8000000826

(UAE) +971 8000320817

(Kuwait) +965 22069086

(Saudi Arabia) +966 8008500030

(Middle East & Africa) +971 520750842



support@eufy.com

Anker Innovations Limited

Room 1318-19, Hollywood Plaza, 610 Nathan Road, Mongkok,

Kowloon, Hong Kong



EufyOfficial



EufyOfficial



EufyOfficial

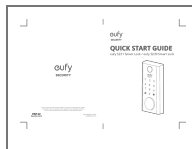
For tutorial videos, FAQs, manuals, and more information, please visit: <https://support.anker.com>

Or scan the QR code **below**:



<https://rainbowbridge.anker.com/qrscan?key=anker-221202>

Documents / Resources



[eufy S231 Security Smart Lock](#) [pdf] User Guide
S231 Security Smart Lock, S231, Security Smart Lock, Smart Lock, Lock

References

- [eufy Support](#)
- [User Manual](#)