

eufy PAP 22 Entry Sensor



eufy PAP 22 Entry Sensor User Manual

[Home](#) » [Eufy](#) » eufy PAP 22 Entry Sensor User Manual 

Contents

- [1 eufy PAP 22 Entry Sensor](#)
- [2 Specifications](#)
- [3 WHAT'S INCLUDED](#)
- [4 BATTERY PLACEMENT](#)
- [5 MOUNTING THE SENSOR](#)
- [6 STATUS LED](#)
- [7 FAQs](#)
- [8 FCC](#)
- [9 CUSTOMER SERVICE](#)
- [10 Documents / Resources](#)
 - [10.1 References](#)
- [11 Related Posts](#)

eufy

eufy PAP 22 Entry Sensor



Specifications

- **Brand:** Eufy Security
- **Model:** Entry Sensor (T8900)
- **Battery:** CR123A (x3)
- **Compatible with:** Eufy Security HomeBase 2 and HomeBase S380

WHAT'S INCLUDED

For Entry Sensor Installation



Entry Sensor
(T8900)



Sensor
Magnet



CR123A
Battery

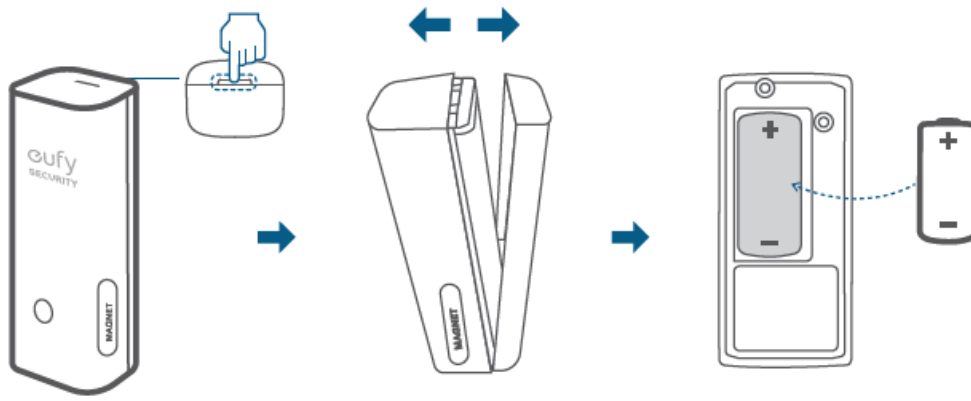


Mounting
Screws

Note: Entry Sensor is only compatible with the eufy Security Homebase or Homebase E.

BATTERY PLACEMENT

Remove the battery compartment lid on the Entry Sensor and insert the provided CR123A battery. Replace the lid.



ADDING ENTRY SENSOR TO YOUR SYSTEM

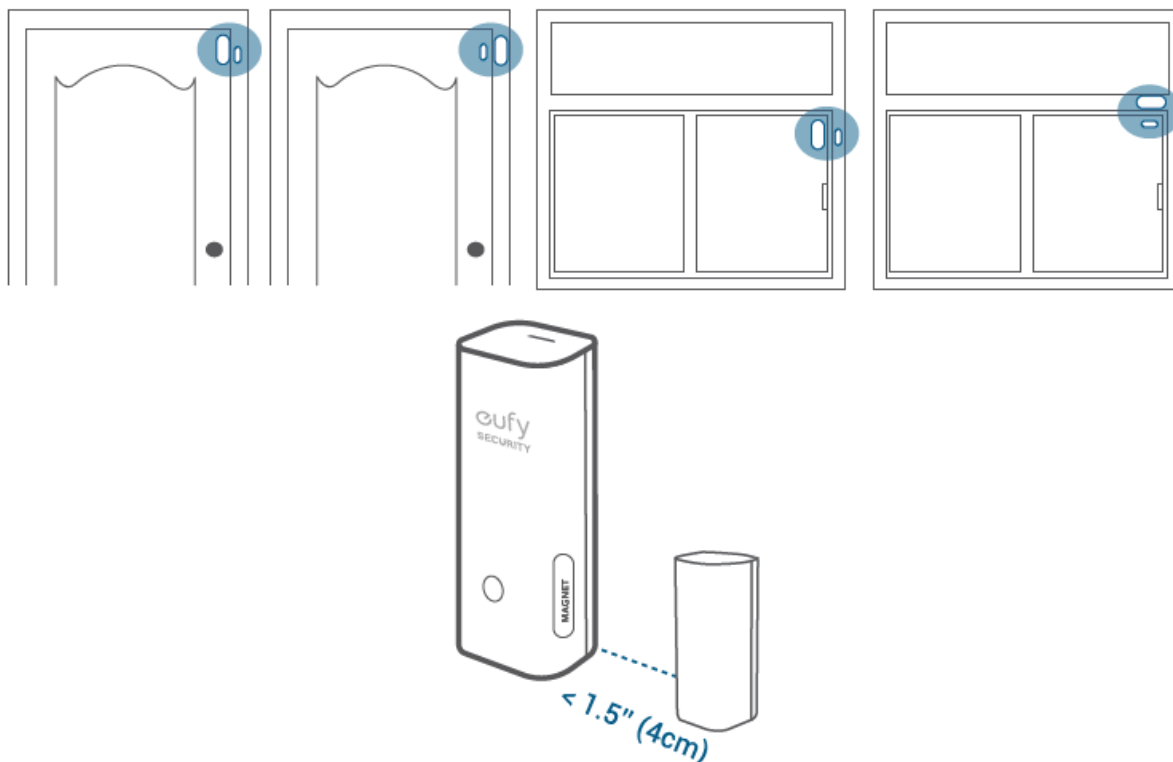
On the eufy Security app follow the on-screen instructions to add your eufy Security devices. Choose Add Device, then select Entry Sensor to add it to your system.






MOUNTING THE SENSOR

Place the sensor on the edge of a door or window. Use the adhesive strips (On the back of the sensor) or mounting screws provided to mount the sensor.

- Make sure the gap between the Entry Sensor and the sensor magnet is less than 1.6 in (4 cm) when the door or window is closed.
- The bottom of the sensor magnet should align with the bottom of the Entry Sensor.



STATUS LED

Sensor LED indicator	Entry Sensor status
 Flashing blue	Adding to HomeBase
 Flashing blue (Once)	Sensor detects an open/close activity
 Flashing red (Once)	Sensor battery is low or disconnects from HomeBase

FAQs

1. What battery does the Entry Sensor use?

- Entry Sensor uses a CR123A battery with 3V output.

2. How long does the battery last?

- One CR123A battery usually lasts up to 2 years, but depends on the usage.

Please visit our official website to download the user manual: www.eufylife.com.

NOTICE

- This product complies with the radio interference requirements of the European Community.

Declaration of Conformity

- Hereby, Anker Innovations Limited declares that this device complies with the essential requirements and other

relevant provisions of Directive 2014/53/EU. For the declaration of conformity, visit the Web site

<https://www.eufylife.com/>.

- Do not use the Device in an environment at too high or too low a temperature, never expose the Device to strong sunshine or a too wet environment.
- The suitable temperature for the product and accessories is 0°C – 40°C.
- RF exposure information: The Maximum Permissible Exposure (MPE) level has been calculated based on a distance of d=20 cm between the device and the human body. To maintain compliance with RF exposure requirements, use a product that maintains a 20cm distance between the device and the human body.
- CAUTION RISK OF EXPLOSION IF THE BATTERY IS REPLACED BY AN INCORRECT TYPE. DISPOSE OF USED BATTERIES ACCORDING TO THE INSTRUCTIONS
- SUB-1G Frequency range: 866~866.8MHz 868.2~869MHz
- Sub-1G Max Output Power: 8.865dBm(ERIP for 868.2~869MHz); 11.746dBm (ERIP for 866~866.8MHz)
- Anker Innovations Deutschland GmbH | Georg-Muche-Strasse 3-5, 80807 Munich, Germany
- Anker Technology (UK) Ltd | Suite B, Fairgate House, 205 Kings Road, Tyseley, Birmingham, B11 2AA, United Kingdom



- This product is designed and manufactured with high-quality materials and components, which can be recycled and reused.



- This symbol means the product must not be discarded as household waste, and should be delivered to an appropriate collection facility for recycling. Proper disposal and recycling help protect natural resources, human health, and the environment. For more information on the disposal and recycling of this product, contact your local municipality, disposal service, or the shop where you bought this product.

FCC

FCC Statement

This device complies with Part 15 of the FCC Rules.

Operation is subject to the following two conditions:

1. this device may not cause harmful interference, and
2. this device must accept any interference received, including interference that may cause undesired operation.

Note: This equipment has been tested and found to comply with the limits for a Class B digital device, under Part 15 of the FCC Rules. These limits are designed to provide reasonable protection against harmful interference in a residential installation. This equipment generates uses and can radiate radio frequency energy and, if not installed and used by the instructions, may cause harmful interference to radio communications. However, there is no guarantee that interference will not occur in a particular installation. If this equipment does cause harmful interference to radio or television reception, which can be determined by turning the equipment off and on, the user is encouraged to try to correct the interference by one or more of the following measures:

1. Reorient or relocate the receiving antenna.
2. Increase the separation between the equipment and the receiver.

3. Connect the equipment to an outlet on a circuit different from that to which the receiver is connected.
4. Consult the dealer or an experienced radio/TV technician for help.

FCC Radio Frequency Exposure Statement

- The device has been evaluated to meet general RF exposure requirements.
- The device can be used in fixed / mobile exposure conditions. The min separation distance is 20cm.
- **The following importer is the responsible party Company Name:** POWER MOBILE LIFE, LLC
- **Address:** 400 108th Ave NE Ste 400, Bellevue, WA 98004-5541
- **Telephone:** 1-[800-988-7973](tel:800-988-7973)

This device complies with Industry Canada license-exempt RSS standard(s).

Operation is subject to the following two conditions:

1. this device may not cause interference, and
2. this device must accept any interference, including interference that may cause undesired operation of the device.”

IC RF Statement:

- When using the product, maintain a distance of 20cm from the body to ensure compliance with RF exposure requirements.

CUSTOMER SERVICE


Warranty

- 12-month limited warranty
- +1 (800) 988 7973 Mon-Fri 9 AM-5 PM (PT)
- +44 (0) 1604 936 200 Mon-Fri 6AM-11AM (GMT)
- +49 (0) 69 9579 7960 Mon-Fri 6:00-11:00
- **Customer Support:** support@eufylife.com



respective owners. 51005002526 V01

Documents / Resources

	eufy PAP 22 Entry Sensor [pdf] User Manual PAP 22 Entry Sensor, PAP 22, Entry Sensor, Sensor
---	---

References

- [eufy - Built with Care | Home Security System & Robovacs | eufy UK](#)
- [User Manual](#)

[Manuals+](#), [Privacy Policy](#)

This website is an independent publication and is neither affiliated with nor endorsed by any of the trademark owners. The "Bluetooth®" word mark and logos are registered trademarks owned by Bluetooth SIG, Inc. The "Wi-Fi®" word mark and logos are registered trademarks owned by the Wi-Fi Alliance. Any use of these marks on this website does not imply any affiliation with or endorsement.