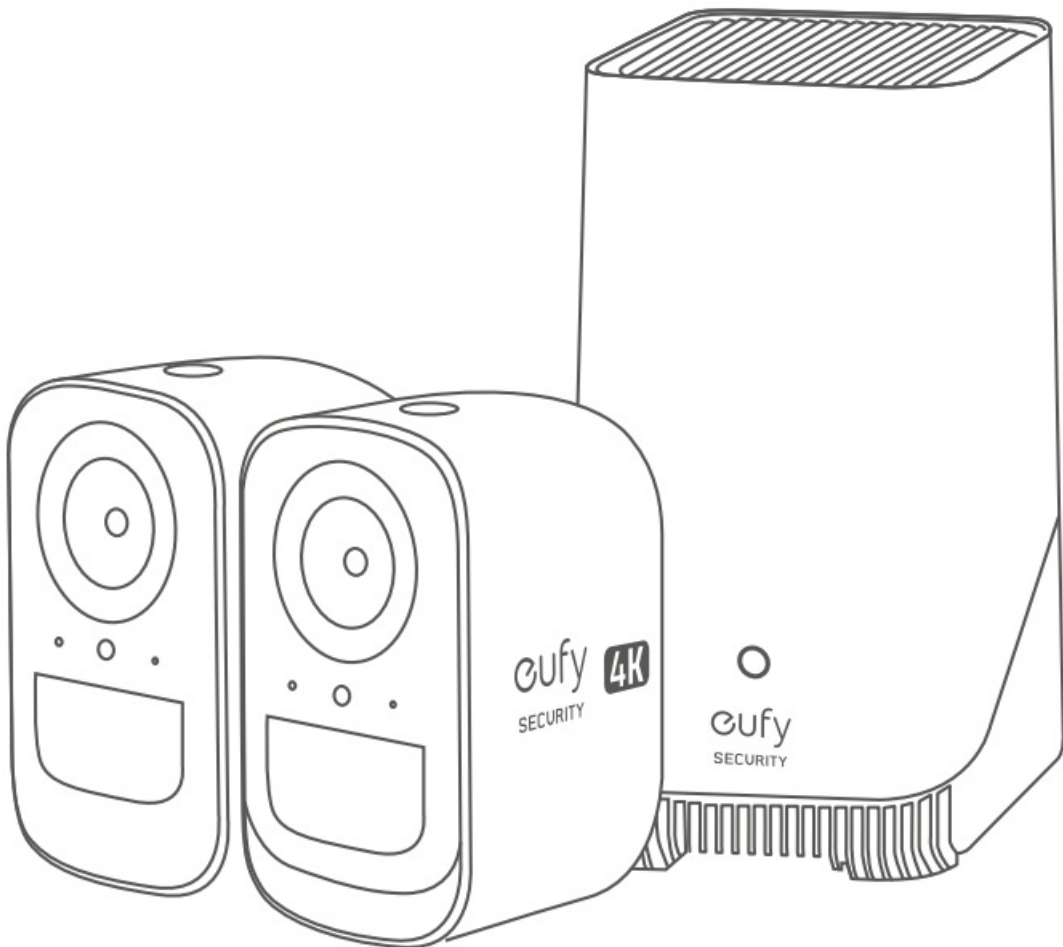




## eufy S300 eufyCam Add-On Camera User Guide

[Home](#) » [Eufy](#) » eufy S300 eufyCam Add-On Camera User Guide 

### eufy S300 eufyCam Add-On Camera



## Contents

### 1 AT A GLANCE

#### 1.1 S300 eufyCam

#### 1.2 S380 HomeBase

### 2 EXPANDING STORAGE (OPTIONAL)

### 3 SETTING UP

### 4 CHARGING THE CAMERA

### 5 MOUNTING THE CAMERA

### 6 SAFETY

### 7 NOTICE

### 8 CUSTOMER SERVICE

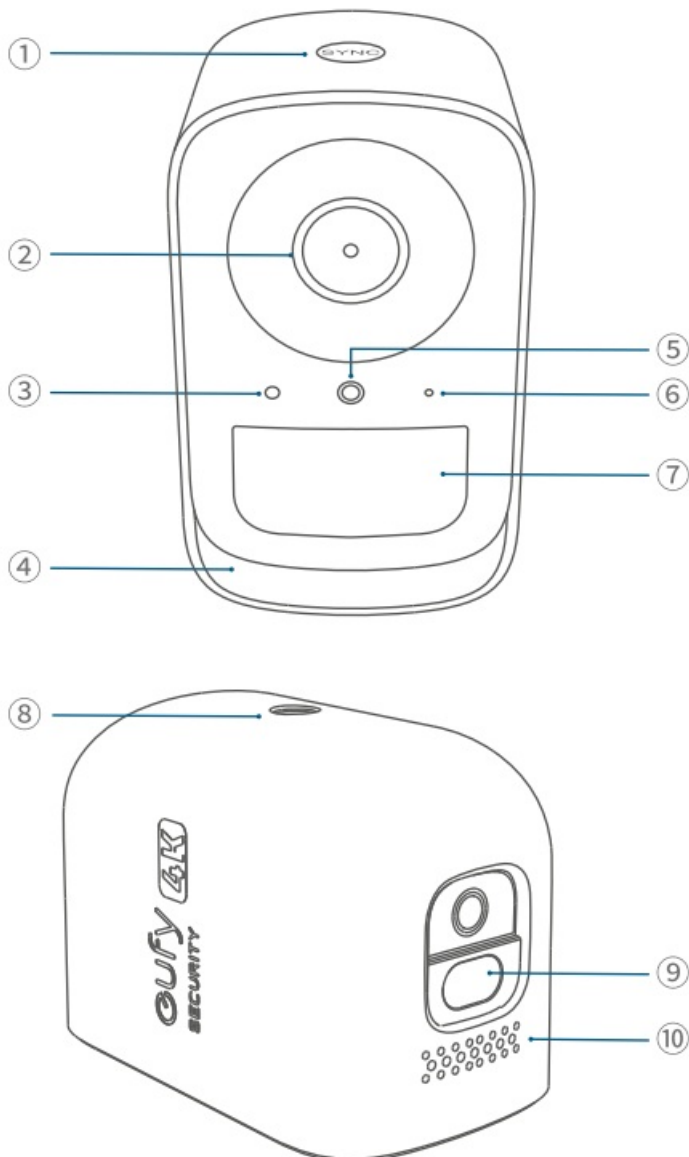
### 9 Documents / Resources

### 10 Related Posts

## AT A GLANCE

### S300 eufyCam

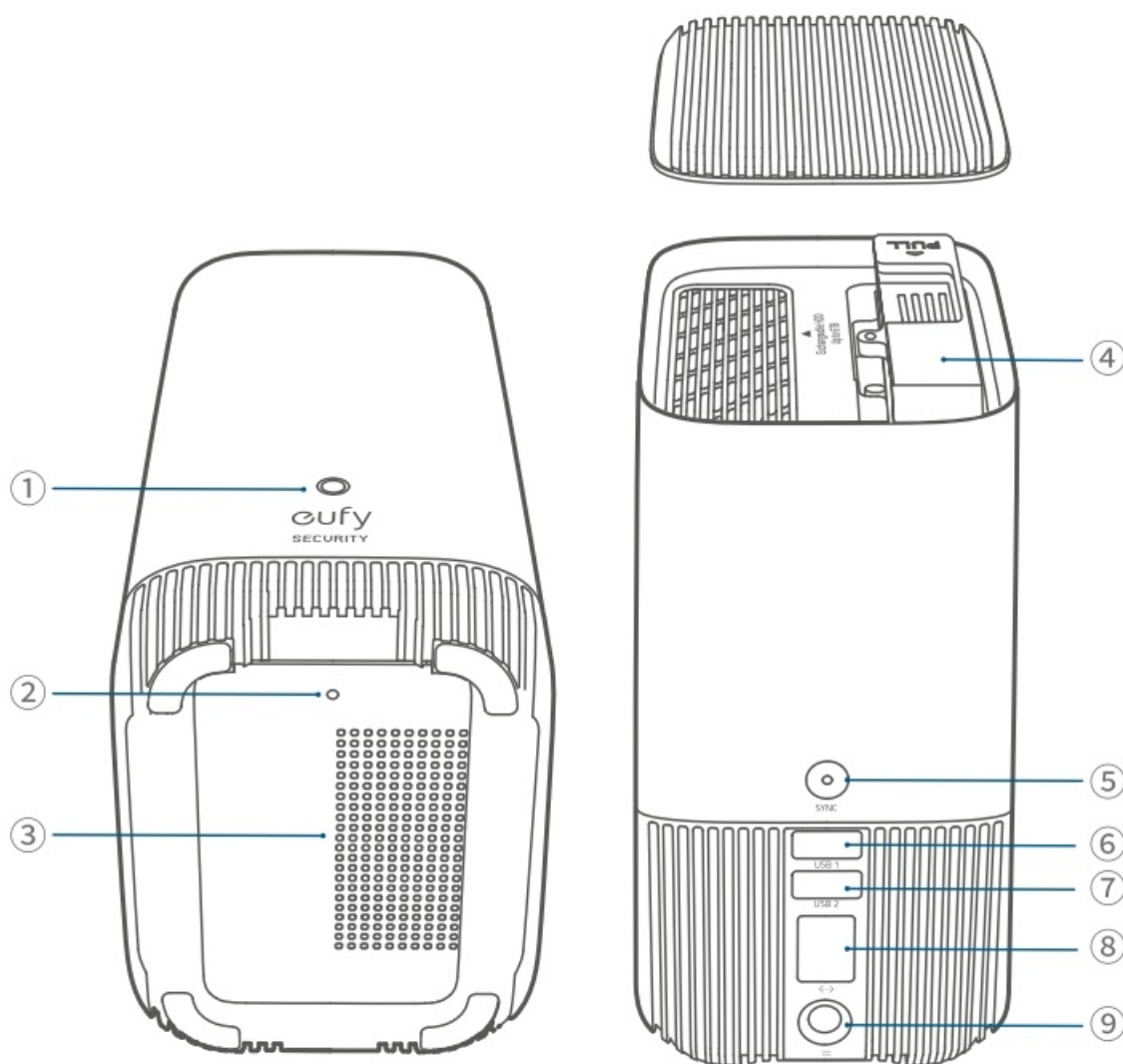
#### Model: T8161



2. Camera Lens
3. Photosensitive Sensor
4. Spotlight
5. LED Indicator
6. Microphone
7. Motion Sensor
8. Mounting Hole
9. USB-C Charging Port
10. Speaker

### **S380 HomeBase**

#### **Model: T8030**



1. Status LED
2. Reset Hole
3. Speaker
4. Hard Drive Bracket
5. SYNC / ALARM OFF Button
6. USB Port 1
7. USB Port 2

8. Ethernet Port

9. Power Port

## EXPANDING STORAGE (OPTIONAL)

S380 HomeBase comes with 16 GB of storage for saving video recordings and allows you to add an additional hard drive to expand the space.

### **Prepare Your Hard Drive**

Your hard drive must meet the following requirements:

<b>Type</b>	Hard disk drive (HDD) or solid state drive (SSD) that uses the SATA interface
<b>Size</b>	2.5 inch
<b>Capacity</b>	Unlimited
<b>Recommended</b>	Western Digital, Seagate, SAMSUNG, Kingston, PNY, Crucial, SanDisk



Transfer all the data in your hard drive to a secure location before adding it to S380 HomeBase.

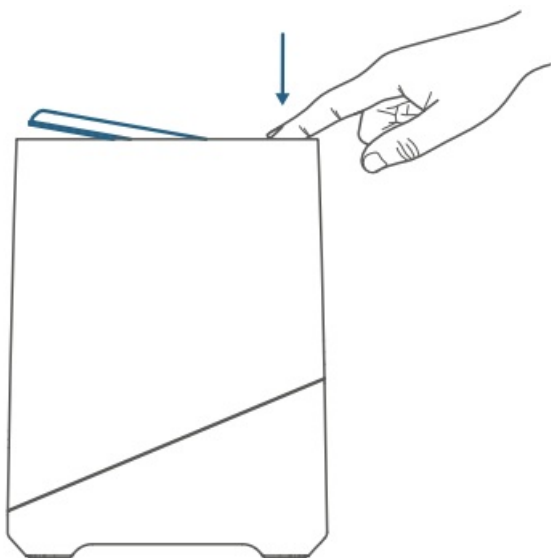


### **Install Your Hard Drive**

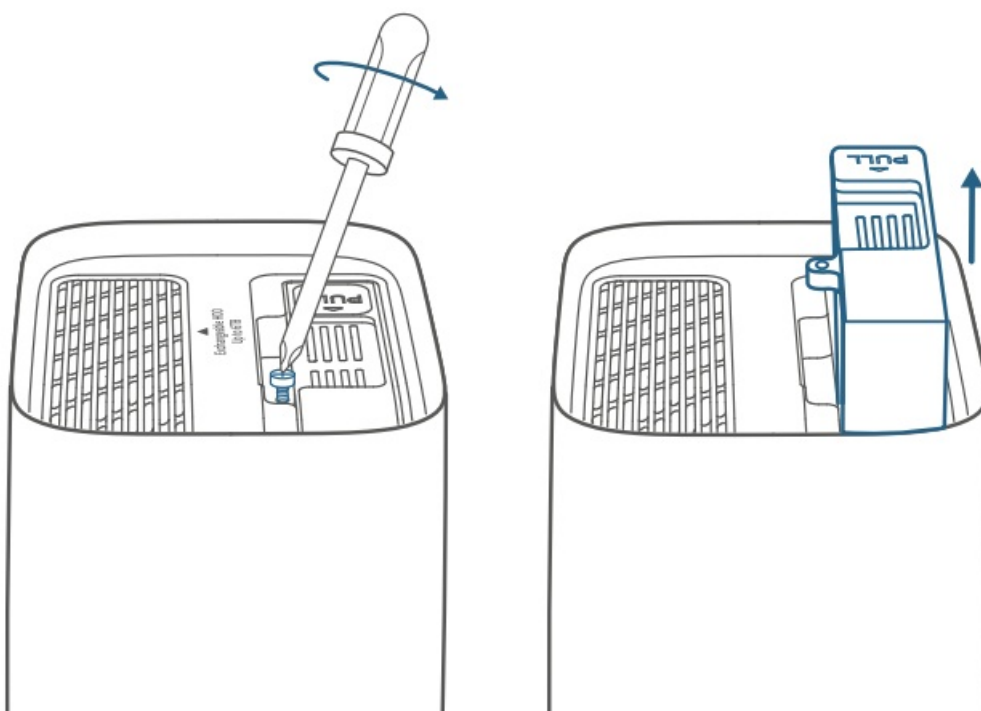


S380 HomeBase must be powered off when you install or remove a hard drive.

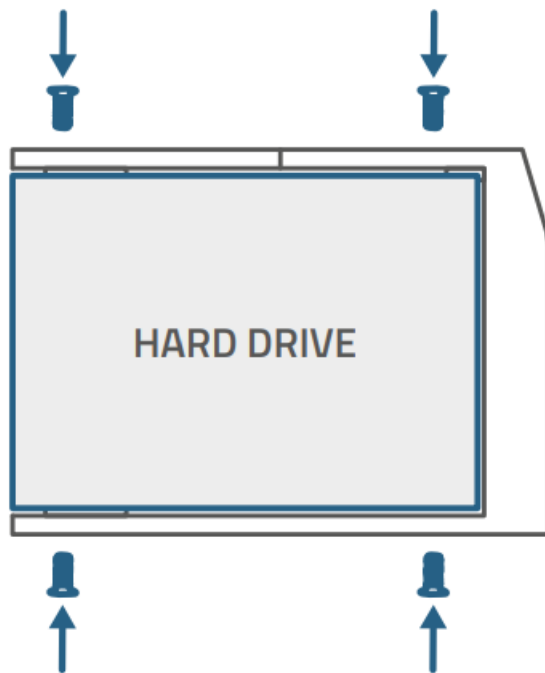
1. Push down the top lid to remove it.



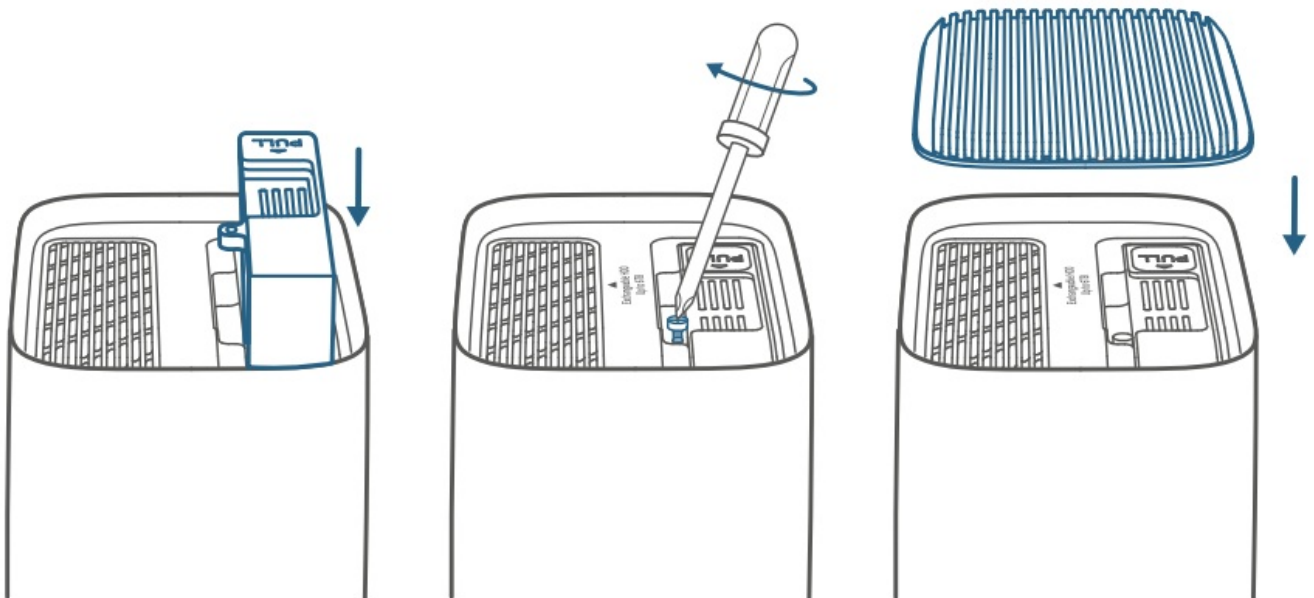
2. Loosen the screw, then pull out the hard drive bracket.



3. Fix your hard drive to the bracket with the provided screws.



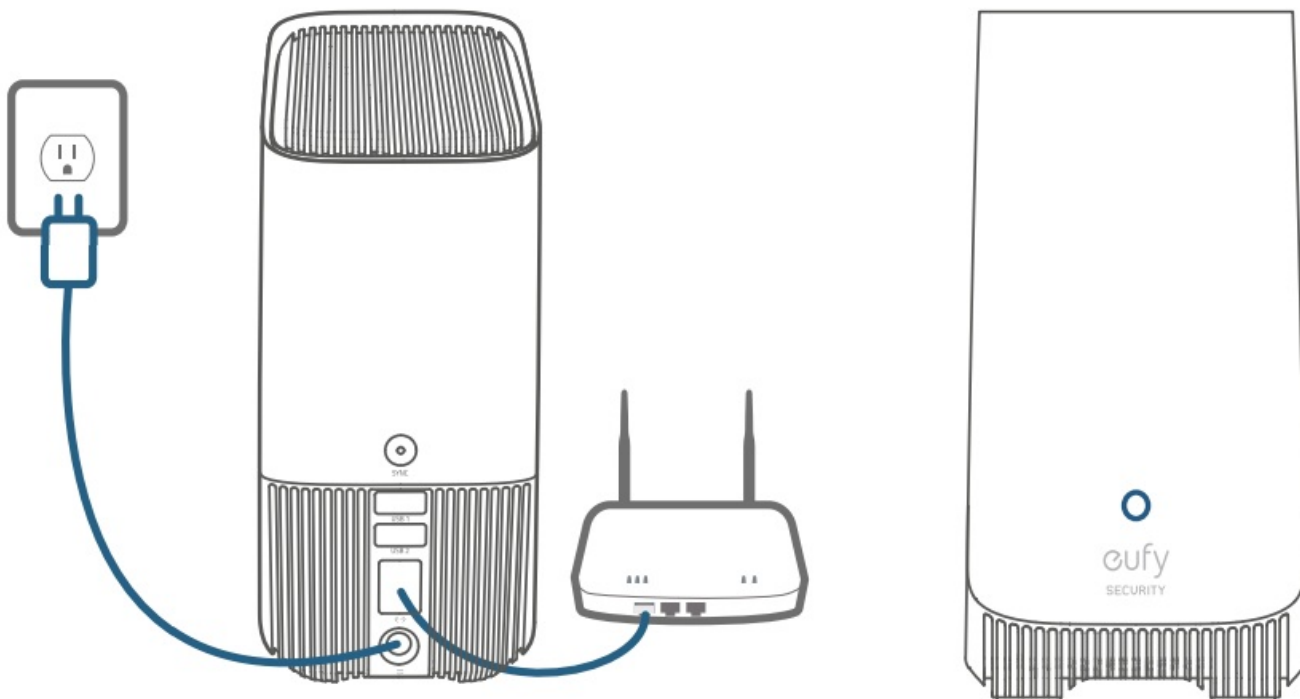
4. Insert and screw the bracket back to S380 HomeBase, then put the top lid back into place.



- You can follow the steps above to expand the storage whenever necessary.
- A new hard drive must be initialized through the eufy Security app to work with S380 HomeBase.

## SETTING UP

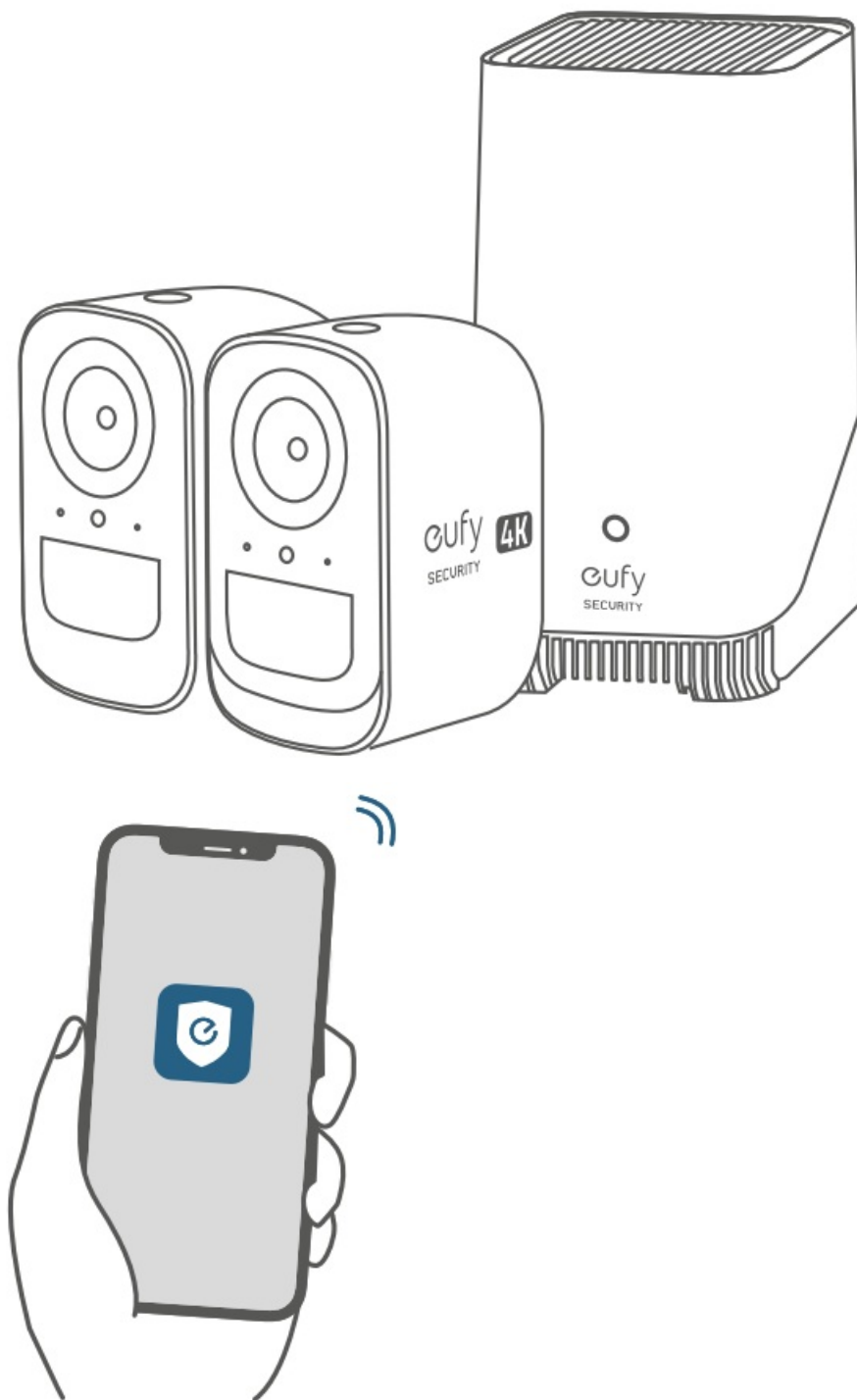
1. Power and connect S380 HomeBase to your router. The LED indicator will turn blue (This may take about 1 min) when S380 HomeBase is ready for setup.



2. Download and install the eufy Security app, then sign up for an account.



3. Follow on-screen instructions to add S380 HomeBase and the cameras to your device list(\*).

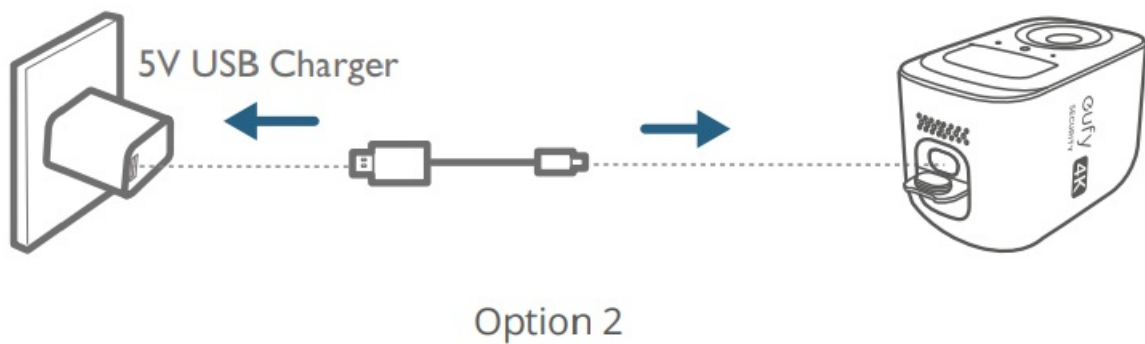
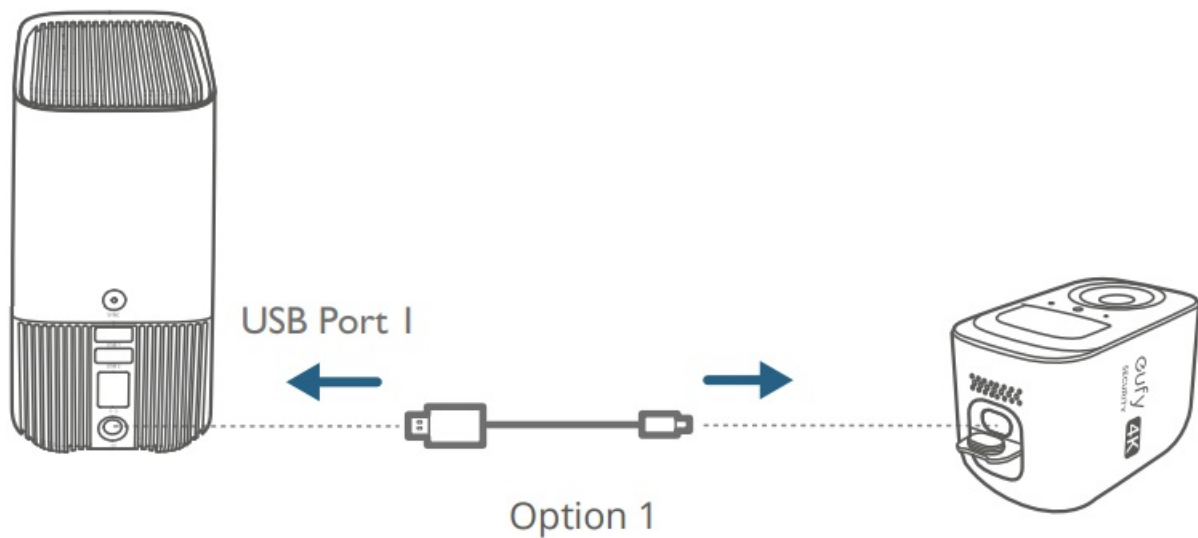




One S380 HomeBase can pair up to 16 cameras.

## CHARGING THE CAMERA

Fully charge both cameras before first use. This may take about 8 hours for each.



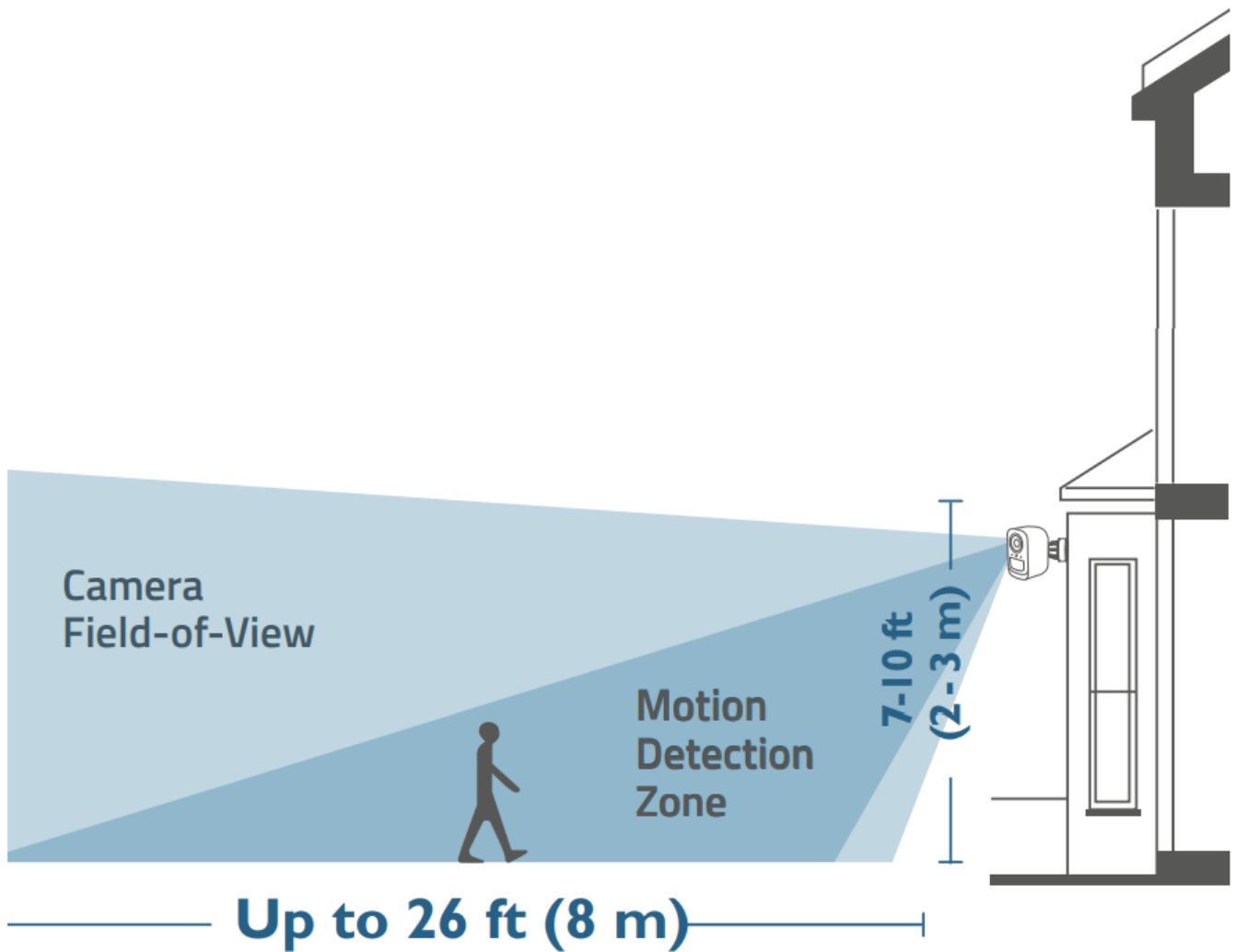


LED Indicator	Description
Blue 	Charging
OFF 	Fully charged

## MOUNTING THE CAMERA

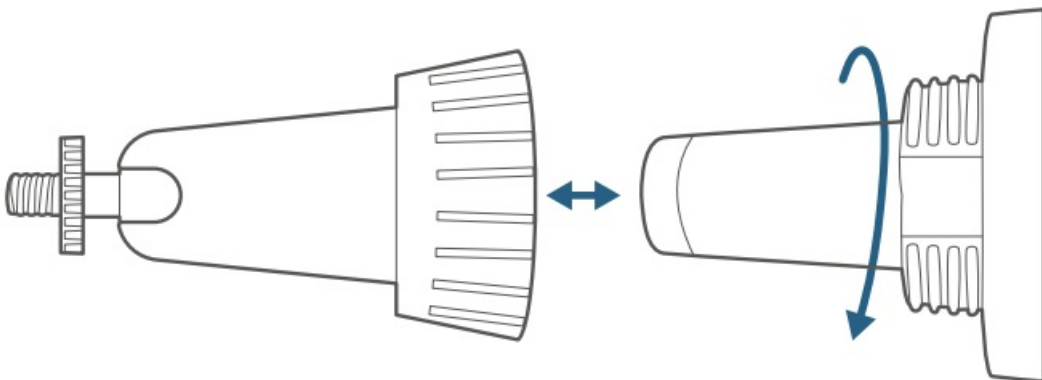
### Select a Location

Select a location where you can get the desired view. We recommend hanging the camera 7-10 ft (2-3 m) above the ground.

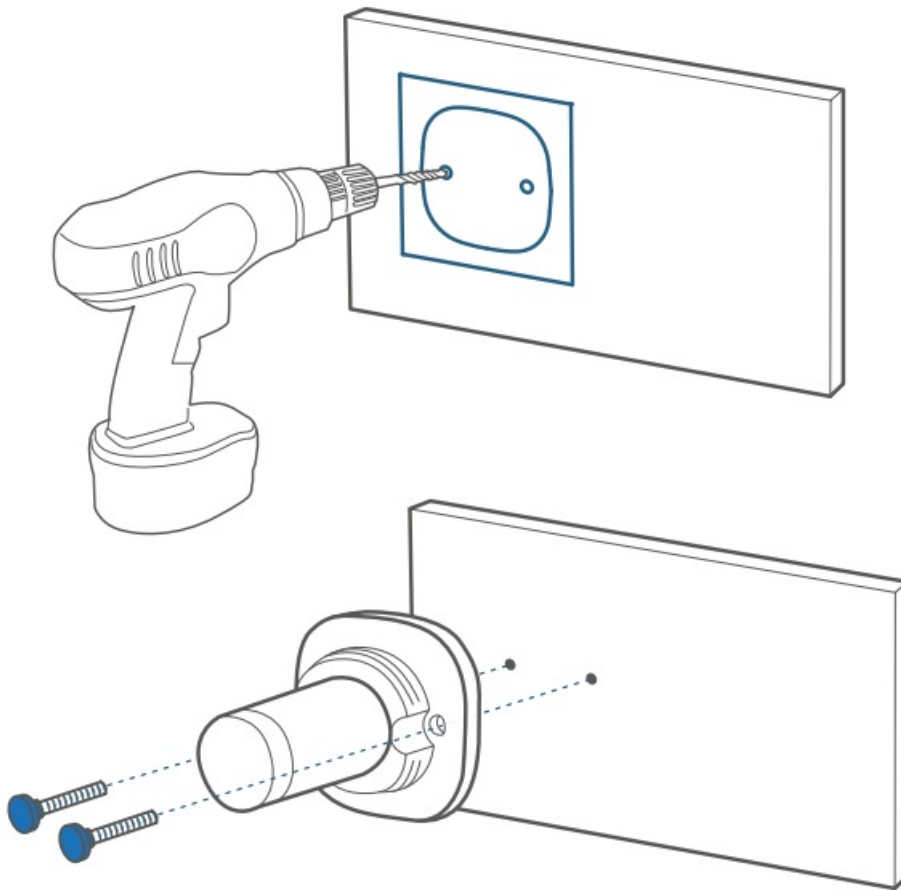


### **Mount the Camera**

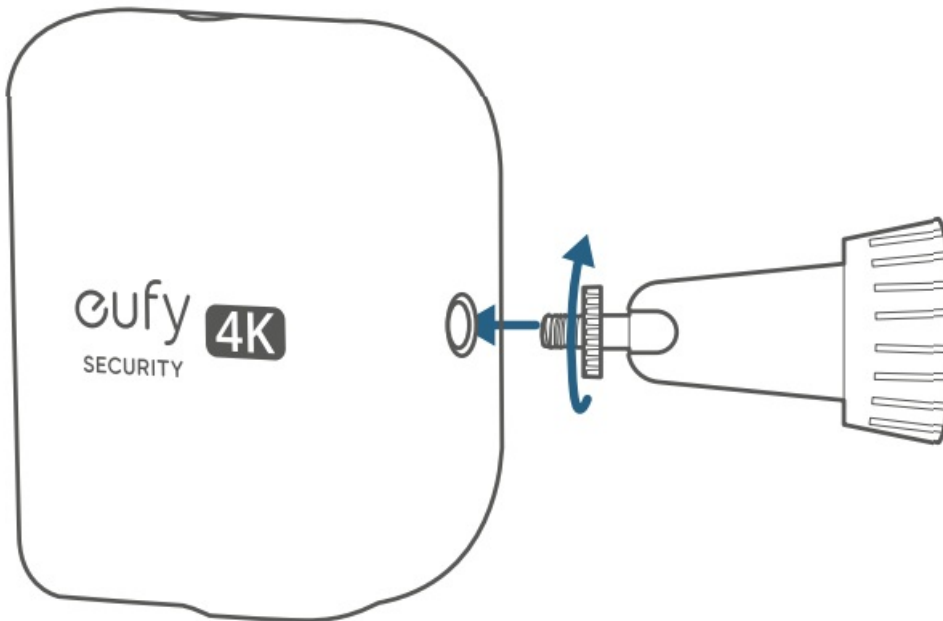
1. Turn the knob of the mounting bracket counterclockwise to loosen and disassemble it.



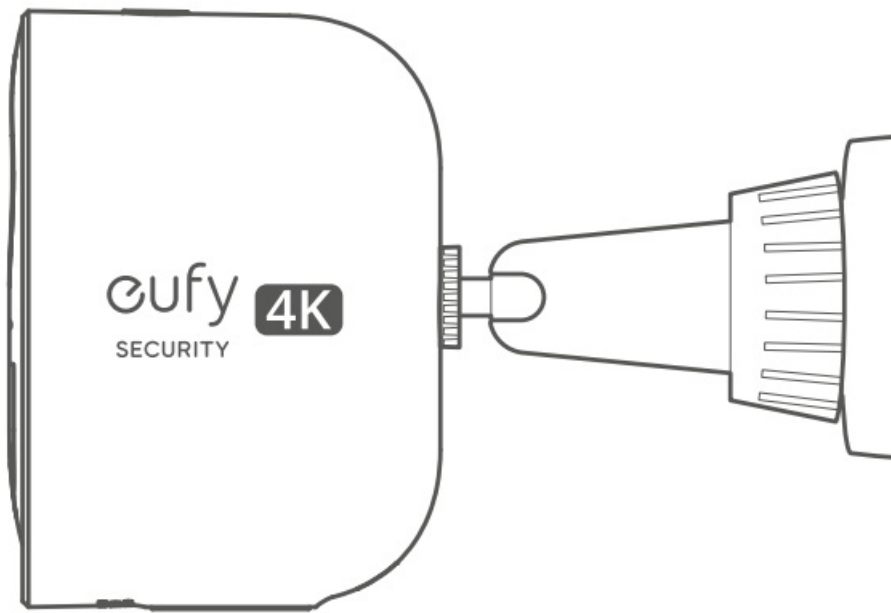
2. Drill holes with a 15/64 inch (6 mm) drill bit, then insert the anchors into the holes; anchors are necessary for walls that are made out of hard materials such as concrete, brick, or stucco.



3. Firmly screw the knob of the mounting bracket into the mounting hole.



4. Hold and screw the camera to the mounting bracket. Rotate the camera to adjust the view and check it using the live stream, which you can access in the eufy Security app.



For troubleshooting, check Help on the eufy Security app. Refer to the app page for LED indicator status.

## SAFETY

- Do not use the device in the environment at a too high or too low temperature, never expose the device to strong sunshine or too wet environment.
- The suitable temperature for T8030 and accessories is  $-10^{\circ}\text{C}$  to  $45^{\circ}\text{C}$  .
- The suitable temperature for T8161 and accessories is  $-20^{\circ}\text{C}$  to  $50^{\circ}\text{C}$  (Charging temperature is  $0^{\circ}\text{C}$  to  $45^{\circ}\text{C}$ ) .
- It is recommended to supply the device in an environment with a temperature that ranges from  $5^{\circ}\text{C}$ ~ $25^{\circ}\text{C}$ .
- When supplying, please place the device in an environment that has a normal room temperature and good ventilation.
- The adapter shall be installed near the equipment and shall be easily accessible.
- Please ensure to use only the adapter offered by the manufacturer. Using unauthorized adapter may cause danger and violate the authorization of the device and the guarantee article.
- This adapter is for indoor use only. The adapter type (for S380 HomeBase) is KA2401A-1202000US, rated output voltage/current is 12 Vdc/2A. The plug is considered as disconnect device of adapter.

## Warning:

- Replacement of a battery with an incorrect type can defeat a safeguard;
- Disposal of a battery into fire or a hot oven, or mechanically crushing or cutting of a battery can result in an explosion;
- Leaving a battery in an extremely high temperature surrounding environment can result in an explosion or the leakage of flammable liquid or gas; and
- A battery subjected to extremely low air pressure may result in an explosion or the leakage of flammable liquid or gas.



**CAUTION:** RISK OF EXPLOSION IF BATTERY IS REPLACED BY AN INCORRECT TYPE. DISPOSE OF USED BATTERIES ACCORDING TO THE INSTRUCTIONS.

## **NOTICE**

### **NOTICE (United States of America)**

#### **FCC Statement**

This device complies with Part 15 of the FCC Rules. Operation is subject to the following two conditions: (1) this device may not cause harmful interference, and (2) this device must accept any interference received, including interference that may cause undesired operation.

**Warning:** Changes or modifications not expressly approved by the party responsible for compliance could void the user's authority to operate the equipment.

**Note:** This equipment has been tested and found to comply with the limits for a Class B digital device, pursuant to Part 15 of the FCC Rules. These limits are designed to provide reasonable protection against harmful interference in a residential installation.

This equipment generates uses and can radiate radio frequency energy and, if not installed and used in accordance with the instructions, may cause harmful interference to radio communications. However, there is no guarantee that interference will not occur in a particular installation. If this equipment does cause harmful interference to radio or television reception, which can be determined by turning the equipment off and on, the user is encouraged to try to correct the interference by one or more of the following measures:

1. Reorient or relocate the receiving antenna.
2. Increase the separation between the equipment and receiver.
3. Connect the equipment into an outlet on a circuit different from that to which the receiver is connected.
4. Consult the dealer or an experienced radio/TV technician for help.

#### **FCC Radio Frequency Exposure Statement**

The device has been evaluated to meet general RF exposure requirements. The device can be used in fixed/mobile exposure condition. The min separation distance is 20cm.

#### **Notice: Shielded cables**

All connections to other computing devices must be made using shielded cables to maintain compliance with FCC regulations.

The following importer is the responsible party

**Company Name:** POWER MOBILE LIFE, LLC

**Address:** 10900 NE 8th St, Ste 501, Bellevue WA 98004

**Telephone:** 1-800-988-7973

### **NOTICE (Canada)**

This device complies with Industry Canada licence-exempt RSS standard(s). Operation is subject to the following two conditions:

1. this device may not cause interference, and
2. this device must accept any interference, including interference that may cause undesired operation of the device.

#### **IC RF Statement:**

When using the product, maintain a distance of 20cm from the body to ensure compliance with RF exposure requirements.

## CUSTOMER SERVICE



12-month limited warranty



### United States

+1 (800) 988 7973

Mon-Sat 6:15AM-6:45PM(PT)

Sun 6:15AM-5:45PM(PT)

### United Kingdom

+44 (0) 1604 936 200

Mon-Sun 6:00-19:00

### Germany

+49 (0) 69 9579 7960

Mo-Fr 8:00-16:00 Sa 9:00-16:00



[support@eufylife.com](mailto:support@eufylife.com)



@EufyOfficial



@EufyOfficial



@EufyOfficial

Anker Innovations Limited

Room 1318-19, Hollywood Plaza, 610 Nathan Road, Mongkok, Kowloon, Hong Kong



## Documents / Resources



[eufy S300 eufyCam Add-On Camera](#) [pdf] User Guide

S300 eufyCam Add-On Camera, S300, eufyCam Add-On Camera, Add-On Camera, Camera