



eufy E8453JW1 Garage Control Cam Plus with Sensor User Guide

[Home](#) » [Eufy](#) » eufy E8453JW1 Garage Control Cam Plus with Sensor User Guide 

Contents

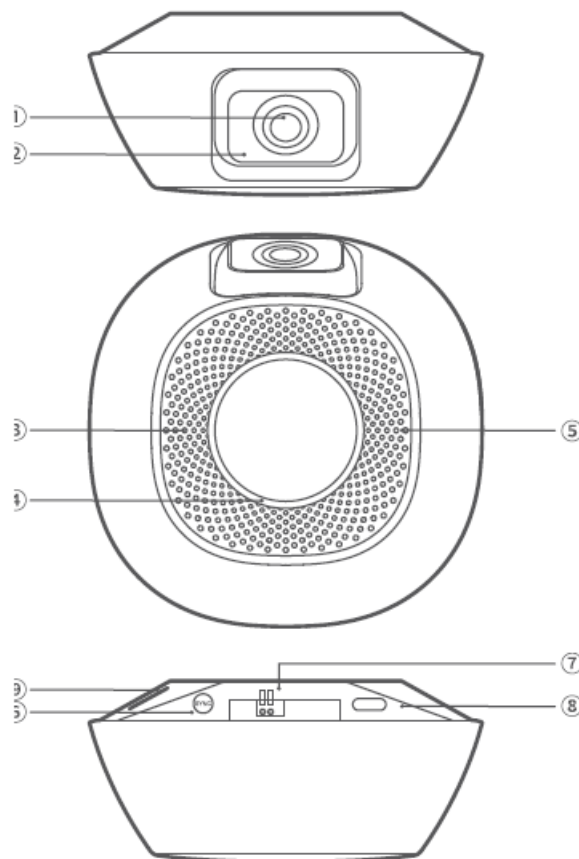
- [1 eufy E8453JW1 Garage Control Cam Plus with Sensor](#)
- [2 OVERVIEW](#)
- [3 SETTING UP CAMERA](#)
- [4 MOUNTING CAMERA](#)
- [5 WIRING CAMERA](#)
- [6 PAIRING AND MOUNTING SENSOR](#)
- [7 APPENDIX. REPLACING](#)
- [8 NOTICE](#)
- [9 FCC Statement](#)
- [10 FAQs](#)
- [11 Video](#)
- [12 Documents / Resources](#)
 - [12.1 References](#)
- [13 Related Posts](#)



eufy E8453JW1 Garage Control Cam Plus with Sensor



OVERVIEW



1. Camera Lens
2. Infrared LED
3. Speaker
4. Ring Light
 - Flashing blue: Connecting to the Internet.
 - Blue: Working properly.
5. Microphone

6. SYNC Button
7. Wire Connectors: Model T8453 includes 2
8. pairs. Power Port
9. MicroSD Card Slot

1. Status LED

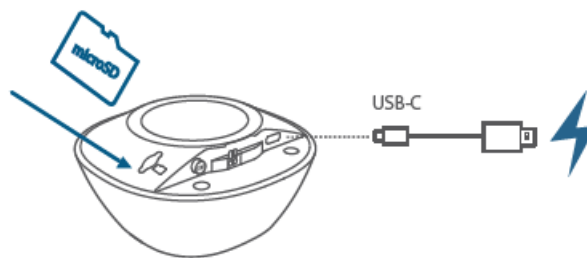


- Flashing blue: Pairing with the camera.
- OFF: Working properly / Powered off.

2. SYNC Button
3. Battery Cover

SETTING UP CAMERA

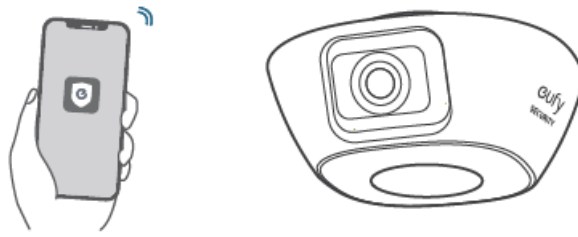
1. Connect the camera to a power outlet. To use local storage, insert a memory card into the microSD card slot before powering the camera (Model T8453 includes one).



2. Download and install the eufy Security app, then sign up for an account.



3. Follow on-screen instructions to add the camera to your device list.

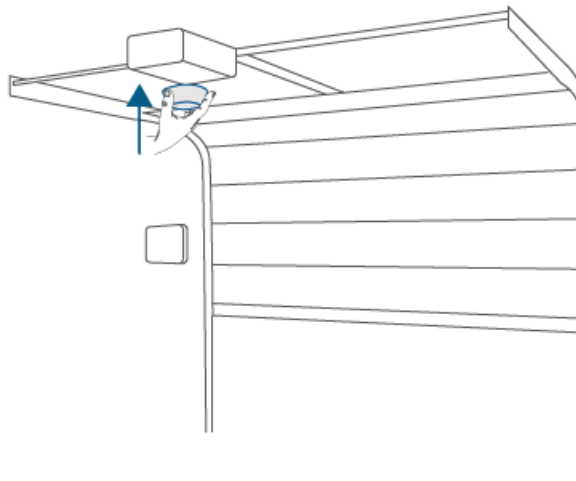


MOUNTING CAMERA

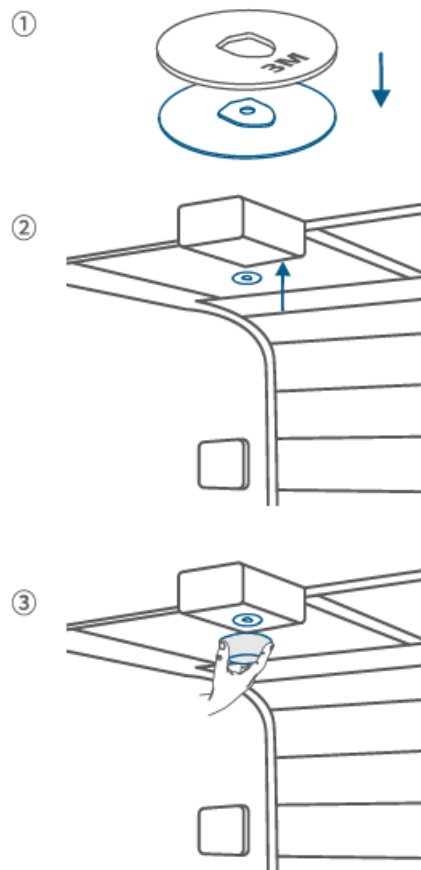
1. Mount the camera underneath the garage door opener or to the ceiling.

Option 1.

Garage Door Opener Magnetically attach the camera underneath the garage door opener with a metal surface or onto the metal track.

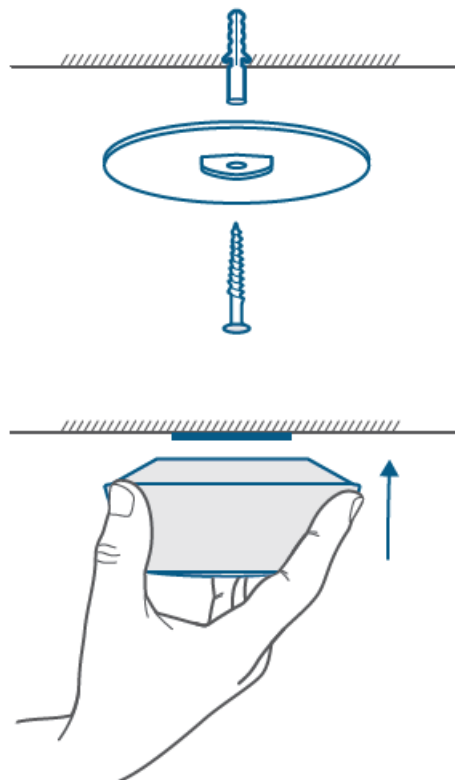


2. For garage door openers with a non-metal surface, stick the mounting plate underneath the garage door opener with the 3M sticker provided, then magnetically attach the camera to the mounting plate.

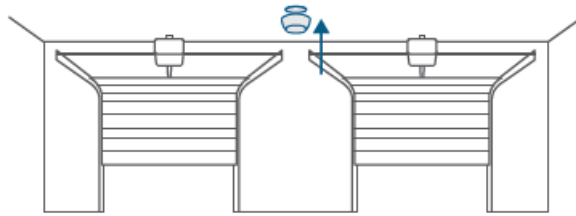


Option 2. Ceiling

Fix the mounting iron plate to the ceiling with the provided screw, then magnetically attach the camera to the mounting plate.



For model T8453, mount the camera to the ceiling in the middle of the two garage door openers so that you can see both garage doors through the camera.

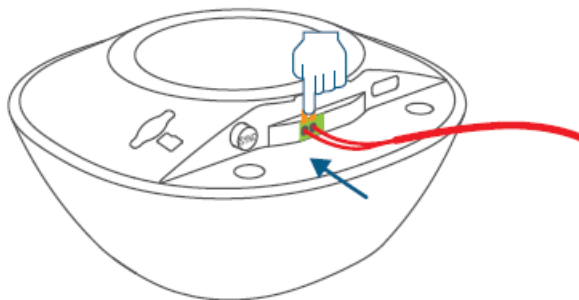


Manually adjust the camera angle until you get the desired view through the eufy Security app.

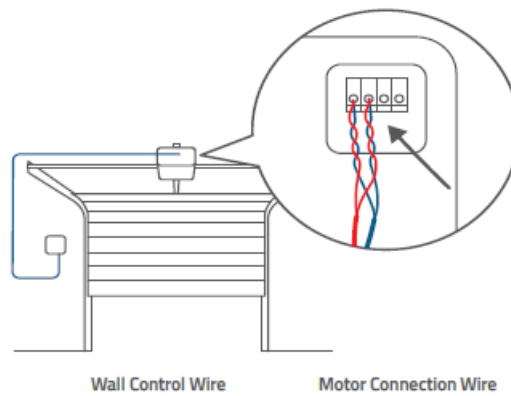


WIRING CAMERA

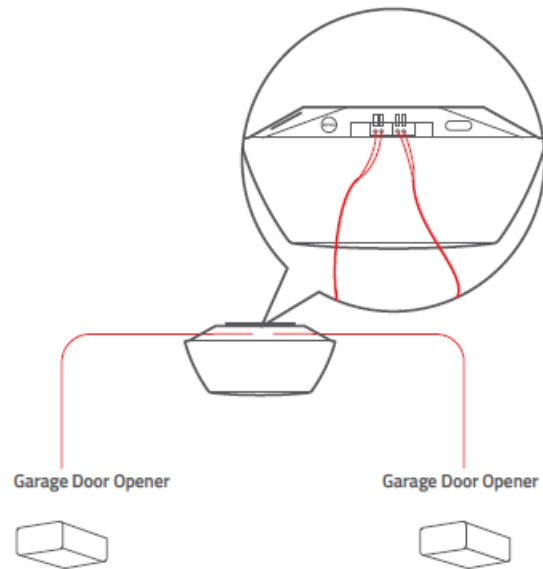
1. Press and hold the orange tabs, then insert one end of the provided motor connection wire into the connectors. Each strand can connect to any connector.



2. On the garage door opener, locate the terminals that wire to the wall control. Twist each wire strand to the motor connection wire, then connect the paired strands back to their original terminal.

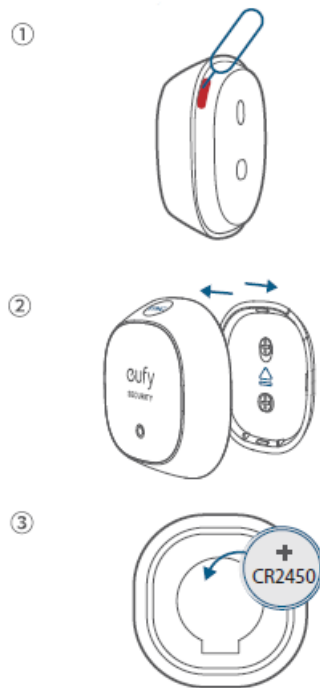


3. Make sure the paired strands are properly connected to their original terminal. If you haven't installed wall control, check your garage door opener's user manual for wall control wiring instructions to locate the right terminals. Model T8453 can wire up to 2 garage doors. Follow the steps above to wire the camera to the other garage door opener.

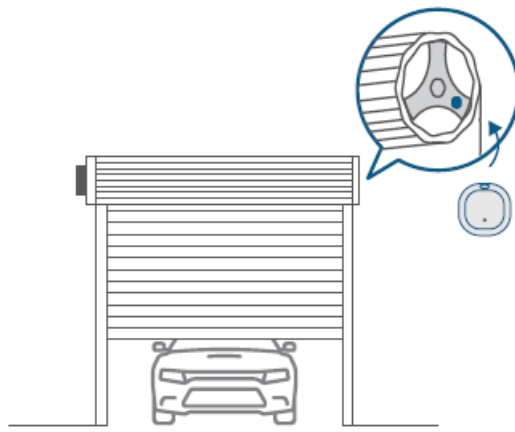


PAIRING AND MOUNTING SENSOR

1. Open the battery cover, then install the provided battery.



2. In the eufy Security app, follow on-screen instructions to pair the sensor with the camera.
3. Select a location on your garage door to mount the sensor.

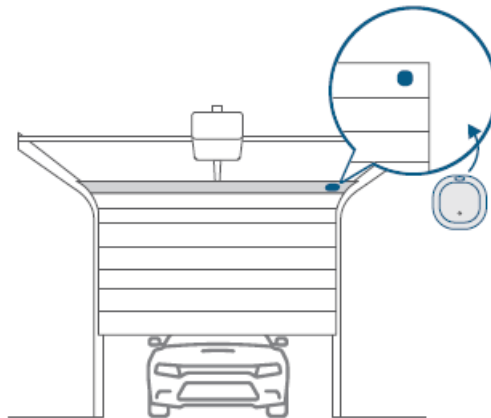


Roller Door

Mount the sensor at the end of the drum wheel spoke.

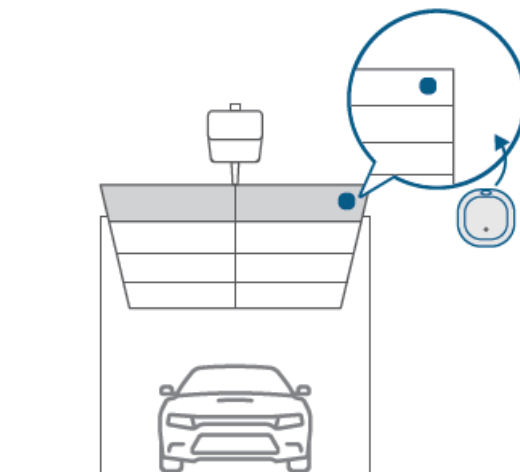
Sectional Door

Mount the sensor on the top of the door (the gray area in the figure below).



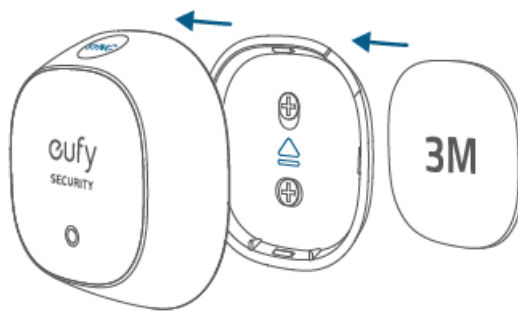
Tilt Door

Mount the sensor on the top of the door (the gray area in the figure below).

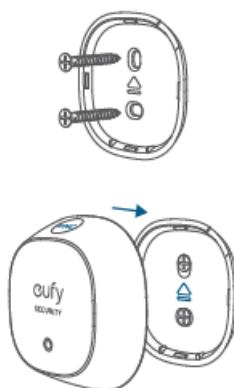


Mount the sensor.

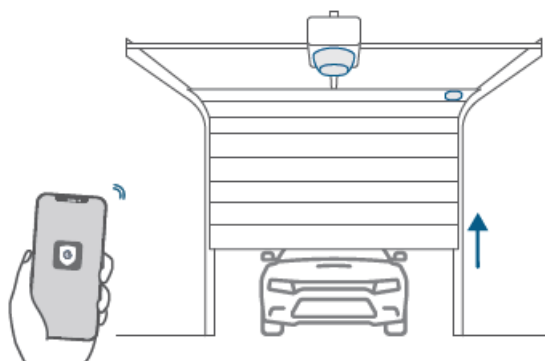
Mount the sensor with the provided 3M sticker.



For wood doors, you can also mount the sensor with the screws provided.



Make sure the SYNC button faces the same direction as the arrow on the battery cover.⁵ In the eufy Security app, follow on-screen instructions to open the door for a test.

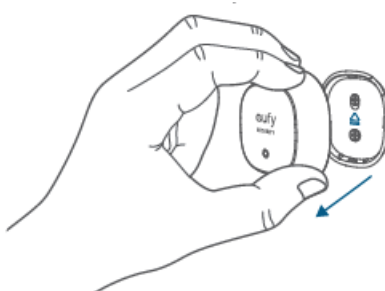


Model T8453 can work with up to 2 garage doors. Buy another sensor for the other garage door, then follow the steps above to pair and mount the sensor.

APPENDIX. REPLACING

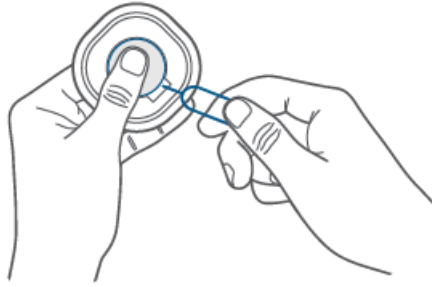
BATTERY FOR SENSOR

1. Pull the sensor off the battery cover.



2. Remove the battery using the provided detaching pin. Press the battery with your finger when detaching to

keep the battery from popping out.



To show the door status (open/closed) correctly in the eufy Security app, perform a calibration on Camera Settings > Door Settings > Calibration after you replace the battery or move the sensor.

NOTICE

CAUTION

RISK OF EXPLOSION IF BATTERY IS REPLACED BY AN INCORRECT TYPE. DISPOSE OF USED BATTERIES ACCORDING TO THE INSTRUCTIONS

ATTENTION

RISQUE D'EXPLOSION SI LA BATTERIE EST REMPLACÉE PAR UN TYPE INCORRECT. ÉLIMINER LES BATTERIES USÉES SELON LES INSTRUCTIONS

Warning:

- replacement of a battery with an incorrect type that can defeat a safeguard;
- disposal of a battery into fire or a hot oven, or mechanically crushing or cutting of a battery, that can result in an explosion;
- leaving a battery in an extremely high temperature surrounding environment that can result in an explosion or the leakage of flammable liquid or gas; and
- a battery subjected to extremely low air pressure that may result in an explosion or the leakage of flammable liquid or gas.

Attention:

- remplacement d'une batterie par un type incorrect pouvant supprimer une protection

FCC Statement

This device complies with Part 15 of the FCC Rules. Operation is subject to the following two conditions:

1. this device may not cause harmful interference, and
2. this device must accept any interference received, including interference that may cause undesired operation.

Warning:

Changes or modifications not expressly approved by the party responsible for compliance could void the user's authority to operate the equipment.

Note:

This equipment has been tested and found to comply with the limits for a Class B digital device, pursuant to Part 15 of the FCC Rules. These limits are designed to provide reasonable protection against harmful interference in a residential installation. This equipment generates, uses, and can radiate radio frequency energy and, if not installed and used in accordance with the instructions, may cause harmful interference to radio communications.

However, there is no guarantee that interference will not occur in a particular installation. If this equipment does cause harmful interference to radio or television reception, which can be determined by turning the equipment off and on, the user is encouraged to try to correct the interference by one or more of the following measures:

- Reorient or relocate the receiving antenna.
- Increase the separation between the equipment and receiver.
- Connect the equipment into an outlet on a circuit different from that to which the receiver is connected.
- Consult the dealer or an experienced radio/TV technician for help.

FCC Radio Frequency Exposure Statement

The device has been evaluated to meet general RF exposure requirements. The device can be used in fixed/mobile exposure condition. The min separation distance is 20cm.

Notice:

Shielded cables All connections to other computing devices must be made using shielded cables to maintain compliance with FCC regulations. The following importer is the responsible party Company Name: POWER MOBILE LIFE, LLC Address: 10900 NE 8th St, Ste 501, Bellevue WA 98004 Telephone: 1-800-988-7973

NOTICE (Canada)

IC Statement

This device complies with Industry Canada licence-exempt RSS standard(s). Operation is subject to the following two conditions:

1. this device may not cause interference, and
2. this device must accept any interference, including interference that may cause undesired operation of the device.”

IC RF Statement

When using the product, maintain a distance of 20cm from the body to ensure compliance with RF exposure requirements

FAQs

How do I set up the camera to work with the eufy Security app?

Connect the camera to a power outlet. To use local storage, insert a memory card into the microSD card slot before powering the camera (Model T8453 includes one).

How do I add my camera to my eufy Security account?

Download and install the eufy Security app, then sign up for an account.

How do I mount the camera?

Mount the camera underneath the garage door opener or to the ceiling. Option 1: Garage Door Opener Magnetically attach the camera underneath the garage door opener with a metal surface or onto the metal track. For garage door openers with a non-metal surface, stick the mounting plate underneath the garage door opener with the 3M sticker provided, then magnetically attach the camera to the mounting plate. Option 2: Ceiling Fix the mounting iron plate to the ceiling with the provided screw, then magnetically attach the camera to it.

How many cameras can I add?

You can add up to 10 cameras per account.

What's included in each package?

Each package includes one E8453JW1 Garage Control Cam Plus with Sensor and one E8453JW1 Mounting Kit (mounting iron plate and screws).

How do I set up my camera for local storage?

Insert a microSD card into your camera (Model T8453 includes one). Follow on-screen instructions to format your memory card and configure your settings. If you want to use cloud storage instead of local storage, skip this step.

Is this weatherproof?

Yes, eufy SoloCam S40 has a waterproof rating of IP67. It is designed to withstand weather conditions such as heavy rain and snow, and it is also 100% protected against dust and sand.

Does Garage-Control Cam support Apple HomeKit?

No, it supports Amazon Alexa and the Google Assistant, but it doesn't currently support HomeKit.

How does storage work? Does Garage-Control Cam support HomeBase2? Can I use cloud storage or NAS/RTSP?

Garage-Control Cam Plus includes 32 GB microSD Card. HomeBase2 and NAS/RTSP are not currently supported, but there will be a supported version in the future.

How do I set up Garage-Control Cam in the eufy Security App?

Please use Garage-Control Cam to scan the QR code in the eufy Security app to link with your account.

Which garage door openers and garage doors will Garage-Control Cam work with?

Garage-Control Cam works with sectional, roller, and tilt doors. To see compatibility of garage door openers, please check the list above.

What distance does it cover?

From my experience it covers out to about 20ft, but the night vision is MUCH better than the Arlo Pro 2 cameras I have.

Can it record all day or does it just record small clips & then stop?



It can record small clips and then stop.

This says its battery powered then it says its plug in. So which is it? I want a battery powered one not plug in.

It's a plug in and it works great, I also have a battery one that works good too.



<https://manuals.plus/wp-content/uploads/2022/07/eufy-Security-garage-camera.mp4>

	<p>eufy E8453JW1 Garage Control Cam Plus with Sensor [pdf] User Guide T8453, 2AOKB-T8453, 2AOKBT8453, E8453JW1, Garage Control Cam Plus with Sensor, E8453JW1 Garage Control Cam Plus with Sensor, Garage Control Cam with Sensor</p>
	<p>eufy E8453JW1 Garage Control Cam Plus with Sensor [pdf] User Guide E8453JW1, Garage Control Cam Plus with Sensor, E8453JW1 Garage Control Cam Plus with Sensor</p>

References

-  [FAQ](#)