

[Skip to content](#)

## Manuals+

User Manuals Simplified.

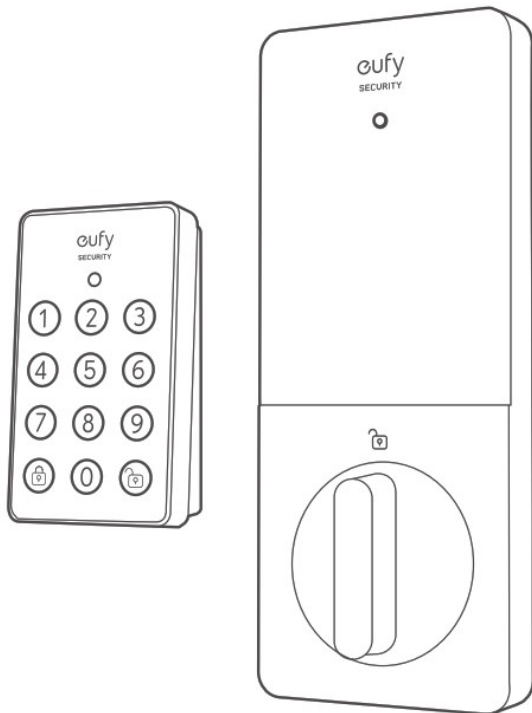
# eufy D10 Security Smart Lock User Guide

[Home](#) » [Eufy](#) » eufy D10 Security Smart Lock User Guide



eufy  
SECURITY

QUICK START GUIDE  
eufy Security Smart Lock D10

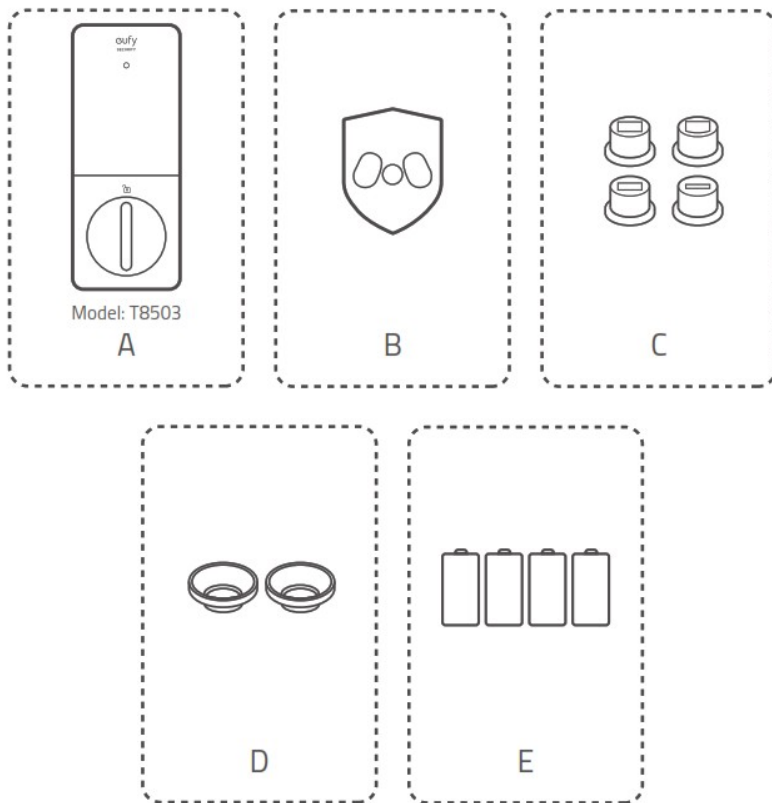


Contents [hide](#)

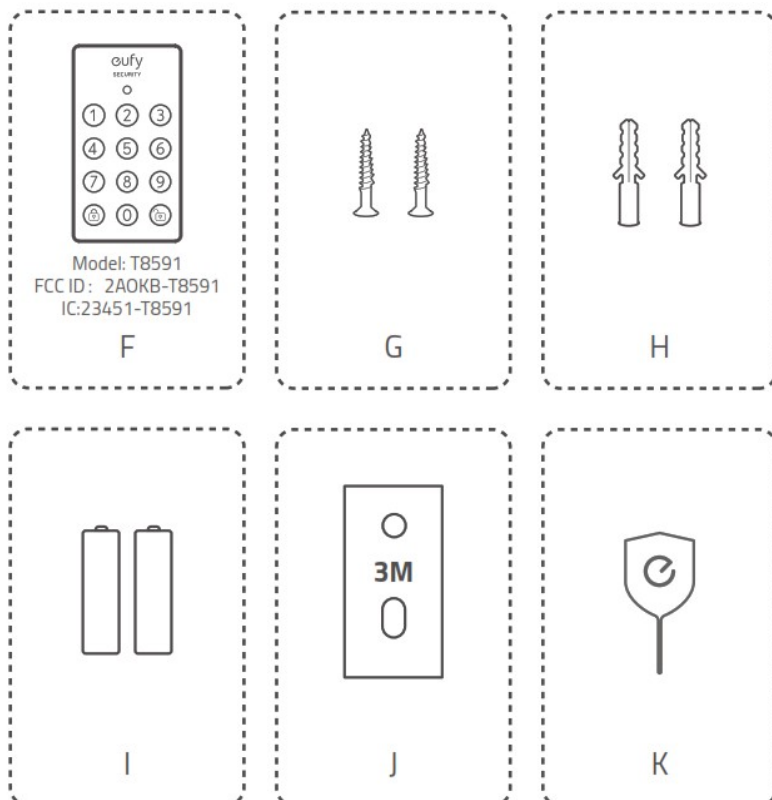
- [1 PRODUCT OVERVIEW](#)
- [2 COMPATIBLE DOORS](#)
- [3 INSTALLING KEYPAD](#)
- [4 INSTALLING SMART LOCK](#)
- [5 SETTING UP THE SYSTEM](#)
- [6 NOTICE](#)
- [7 Documents / Resources](#)
- [8 Related Posts](#)

## PRODUCT OVERVIEW

For Smart Lock Installation



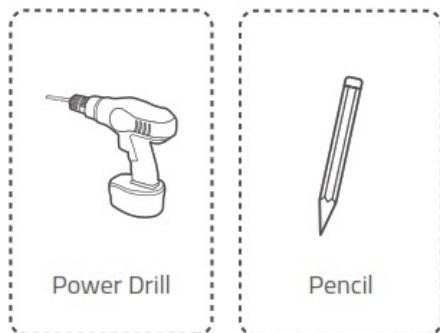
#### For Keypad Installation



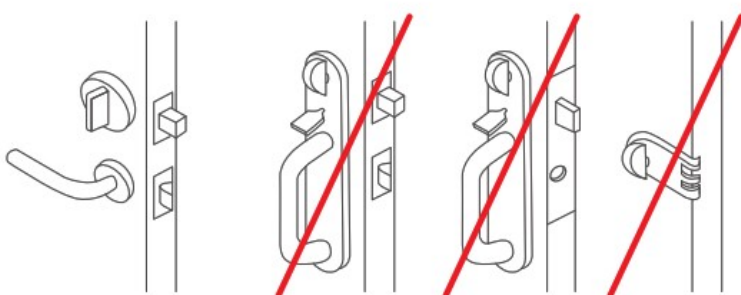
Required (not included)



Optional: For installing keypad with expansion bolts only

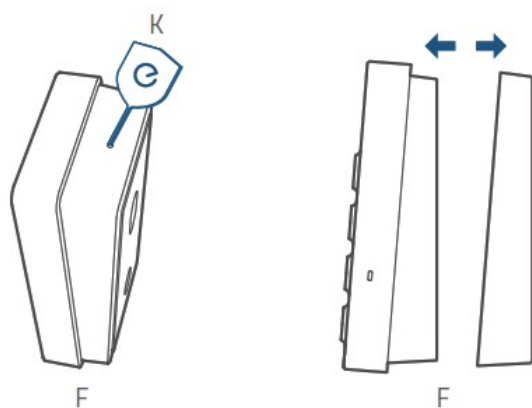


## COMPATIBLE DOORS

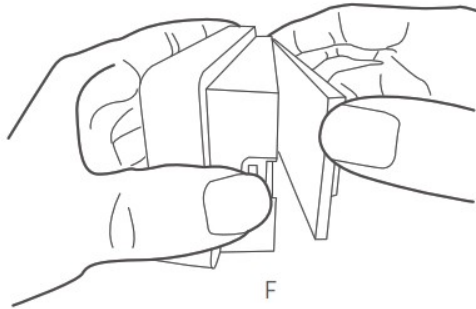


## INSTALLING KEYPAD

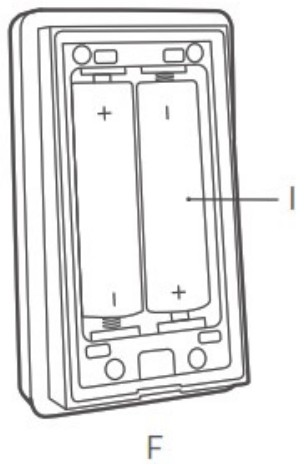
1



2

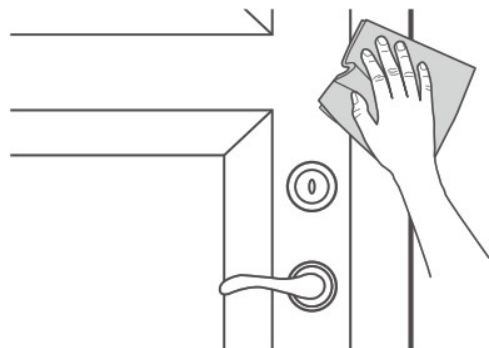


3

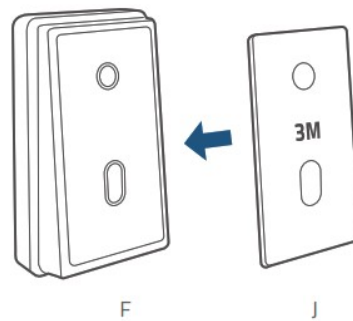


Option 1: 3M Sticker

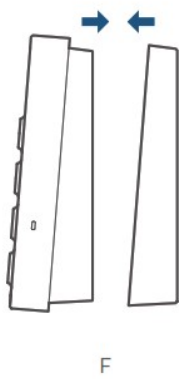
1



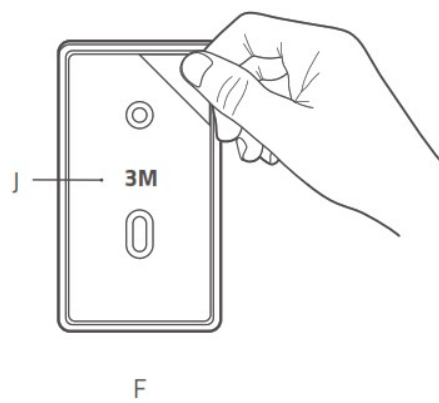
3



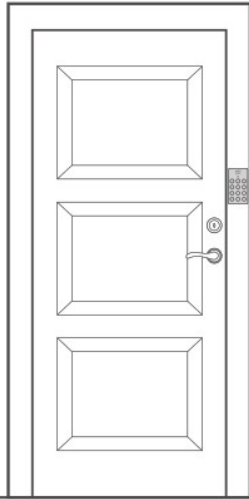
2



4

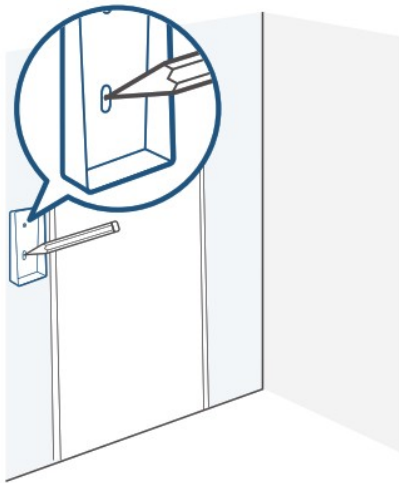


5

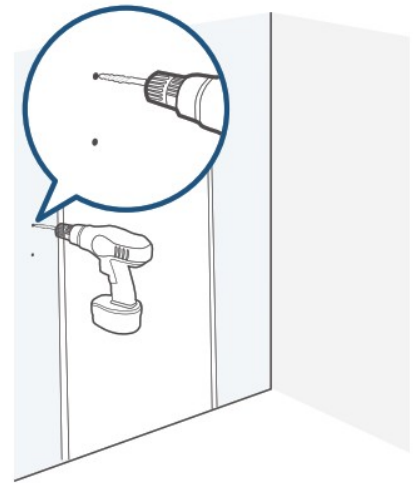


Option 2: Expansion Bolts

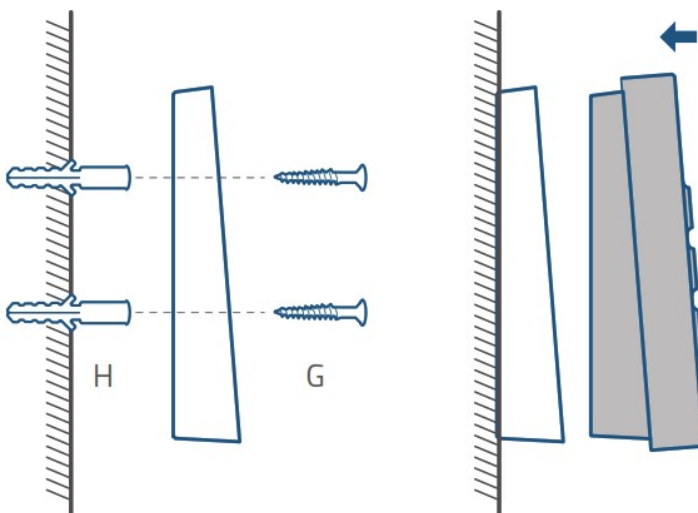
1



2

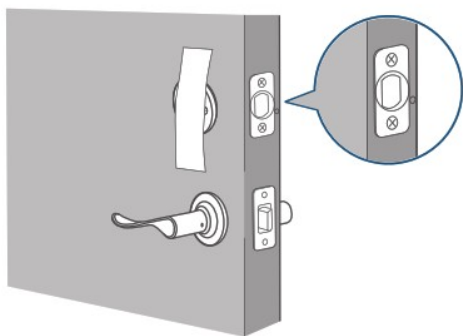


3

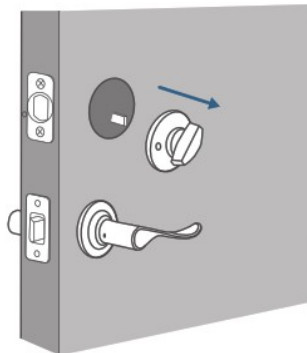


INSTALLING SMART LOCK

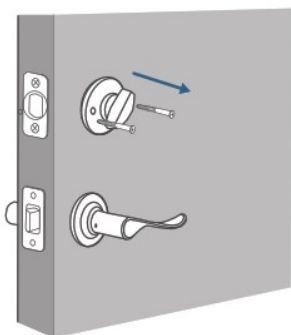
1



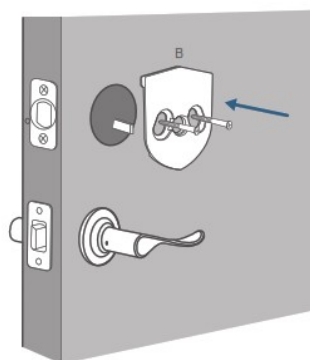
3



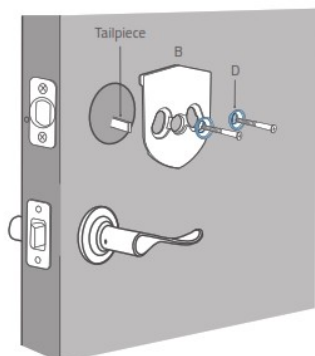
2



4



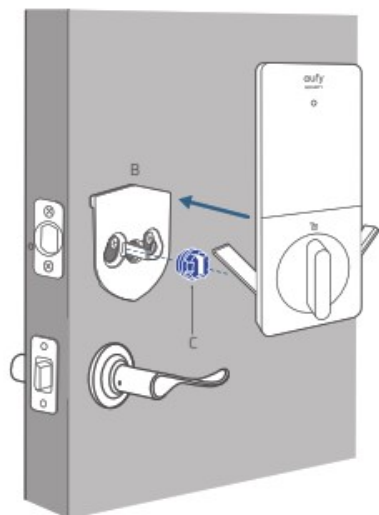
If the mounting plate is not installed tightly to the door, use the screw pads provided.



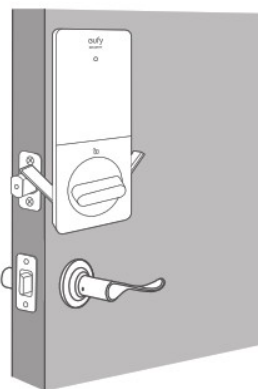
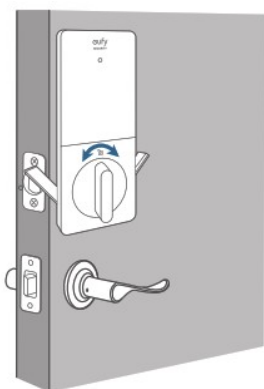
⑤ Select an adapter(C) according to the cross-sectional shape and angle of the tailpiece.

Tailpiece	Adapter(C)
or	
or	

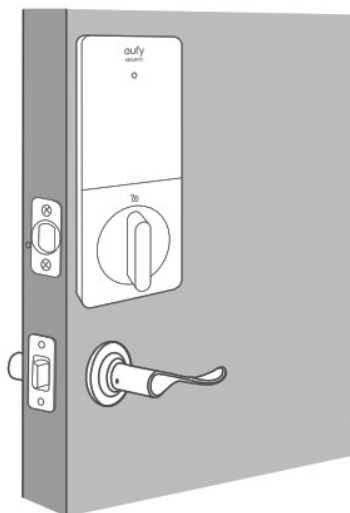
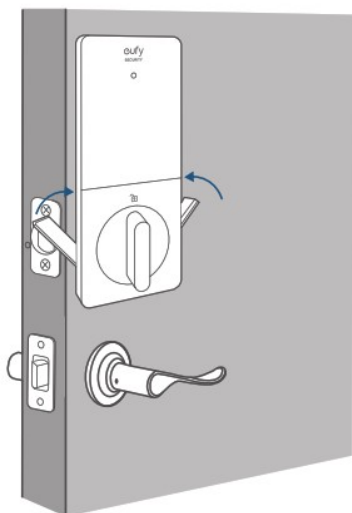
6



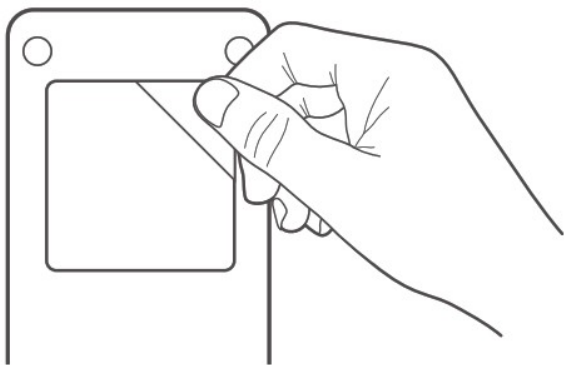
7 Lock and unlock to test.



8

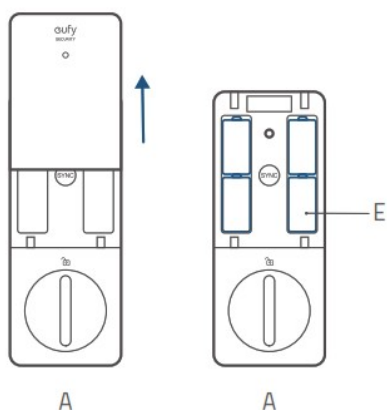


If the smart lock is not installed tightly to the door, use the provided 3M sticker.



A

9



A

A

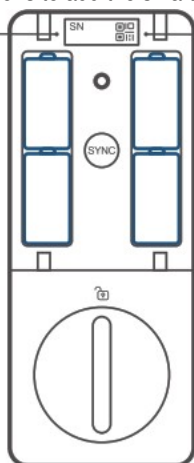
## SETTING UP THE SYSTEM

1. Download and install the eufy Security app, then sign up for an account.



2. Follow on-screen instructions to add the smart lock to your device list.

Serial Number      QR Code



## NOTICE

Do not use the Device in the environment at too high or too low temperature, never expose the Device under strong sunshine or too wet environment. The suitable temperature for the product and accessories is 0°C – 49°C (32°F – 120.2°F) for the lock and -10°C – 50°C (-50°F – 122°F) for the keypad. When supplying, please place the device in an environment that has a normal room temperature and good ventilation. It is recommended to supply the device in an environment with a temperature that ranges from 5°C – 25°C (41°F – 77°F).





This product is designed and manufactured with high-quality materials and components, which can be recycled and reused.



**CAUTION RISK OF EXPLOSION IF BATTERY IS REPLACED BY AN INCORRECT TYPE. DISPOSE OF USED BATTERIES ACCORDING TO THE INSTRUCTIONS**

The equipment is only suitable for mounting at heights  $\leq 2$  m.

#### FCC Statement

This device complies with Part 15 of the FCC Rules. Operation is subject to the following two conditions: (1) this device may not cause harmful interference, and (2) this device must accept any interference received, including interference that may cause undesired operation.

**Warning:** Changes or modifications not expressly approved by the party responsible for compliance could void the user's authority to operate the equipment.

Note: This equipment has been tested and found to comply with the limits for a Class B digital device, pursuant to Part 15 of the FCC Rules. These limits are designed to provide reasonable protection against harmful interference in a residential installation. This equipment generates, uses, and can radiate radio frequency energy and, if not installed and used in accordance with the instructions, may cause harmful interference to radio communications. However, there is no guarantee that interference will not occur in a particular installation. If this equipment does cause harmful interference to radio or television reception, which can be determined by turning the equipment off and on, the user is encouraged to try to correct the interference by one or more of the following measures:

1. Reorient or relocate the receiving antenna.
2. Increase the separation between the equipment and receiver.
3. Connect the equipment into an outlet on a circuit different from that to which the receiver is connected.
4. Consult the dealer or an experienced radio / TV technician for help.

#### FCC Radio Frequency Exposure Statement

The device has been evaluated to meet general RF exposure requirements. The device can be used in fixed / mobile exposure condition. The min separation distance is 20 mm.

#### Notice: Shielded cables

All connections to other computing devices must be made using shielded cables to maintain compliance with FCC regulations. The following importer is the responsible party.

Company Name: POWER MOBILE LIFE, LLC

Address: 10900 NE 8TH ST, STE 501, BELLEVUE, WA 98004

Telephone: 1-800-988-7973

#### CUSTOMER SERVICE

##### Warranty



12-month limited warranty



+1 (800) 988 7973 Mon-Fri 9AM-5PM (PT)  
+44 (0) 1604 936 200 Mon-Fri 6AM-11AM (GMT)  
+49 (0) 69 9579 7960 Mon-Fri 6:00-11:00

Customer Support: [support@eufylife.com](mailto:support@eufylife.com)

Anker Innovations Limited

Room 1318-19, Hollywood Plaza, 610 Nathan Road, Mongkok, Kowloon, Hong Kong



@EufyOfficial



@EufyOfficial



@EufyOfficial



Anker Innovations Limited. All rights reserved. eufy Security and eufy Security Logo are trademarks of Anker Innovations Limited, registered in the United States and other countries. All other trademarks are the property of their respective owners.

51005002998 V01

#### Documents / Resources



[eufy D10 Security Smart Lock \[pdf\] User Guide](#)

T8591, 2AOKB-T8591, 2AOKBT8591, D10 Security Smart Lock, Security Smart Lock, Smart Lock, Lock

[Manuals+](#)

- [home](#)
- [privacy](#)