



eufy Security T8506 V01 C220 Smart Lock User Guide

[Home](#) » [eufy SECURITY](#) » eufy Security T8506 V01 C220 Smart Lock User Guide 

eufy Security T8506 V01 C220 Smart Lock User Guide

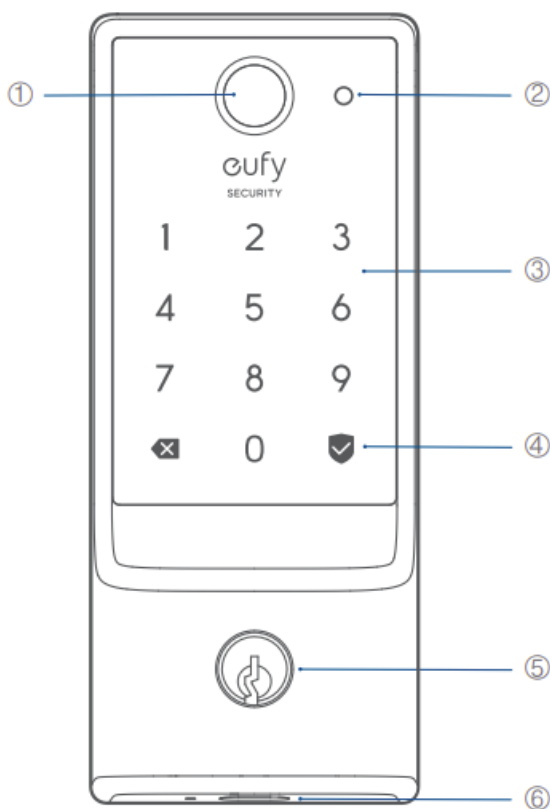


Contents

- 1 INSTALLTION INSTRUCTION
- 2 AT A GLANCE
- 3 WHAT'S INCLUDED
- 4 INSTALLATION
- 5 Step 2. Install Deadbolt
- 6 Step 3. Install Exterior Assembly
- 7 Step 4. Install Interior Assembly
- 8 SETTING UP THE SYSTEM
- 9 NOTICE
- 10 Notice (Australia)
- 11 Customer Service
- 12 Documents / Resources
 - 12.1 References
- 13 Related Posts

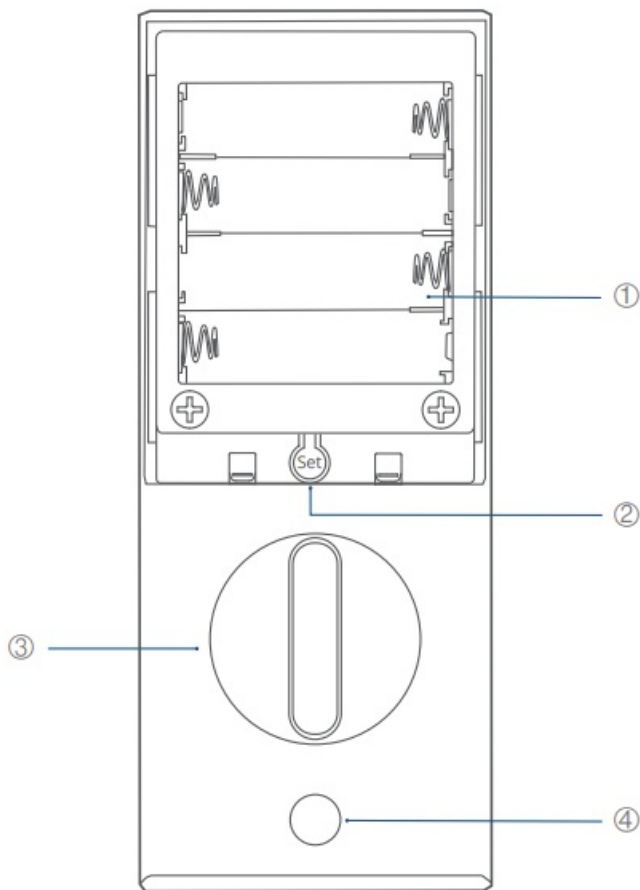
INSTALLTION INSTRUCTION

AT A GLANCE



1. Fingerprint Button
2. Battery Indicator
3. Keypad
4. Status Light and Lock / Unlock Button
 - **Blue:** Door unlocked
 - **Orange:** Door locked
 - **Red:** Abnormal state
5. **Keyway:** Can be copied, can't be rekeyed.

6. **USB-C Port:** Charges the lock in emergency situations.

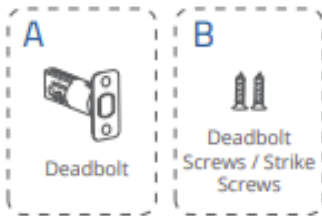


- 1. Battery Compartment
- 2. Setup Button
- 3. Thumbturn
- 4. Screw Hole

WHAT'S INCLUDED

For Smart Lock Installation

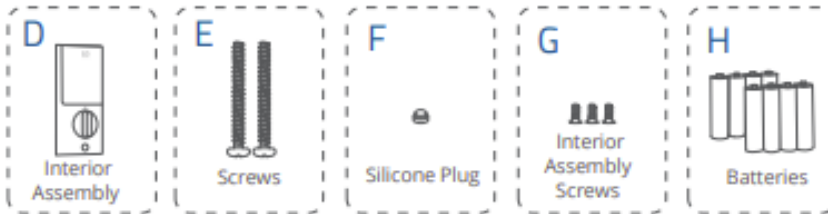
(Step 2) Deadbolt Installation Set



(Step 3) Exterior Assembly



(Step 4) Interior Assembly Installation Set



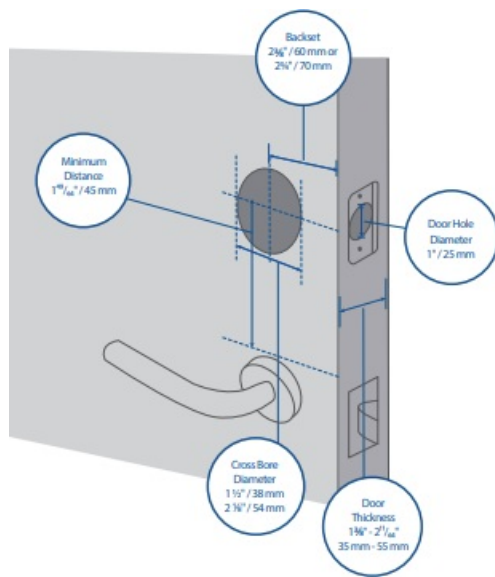
(Step 5) Strike Plate Installation Set



INSTALLATION

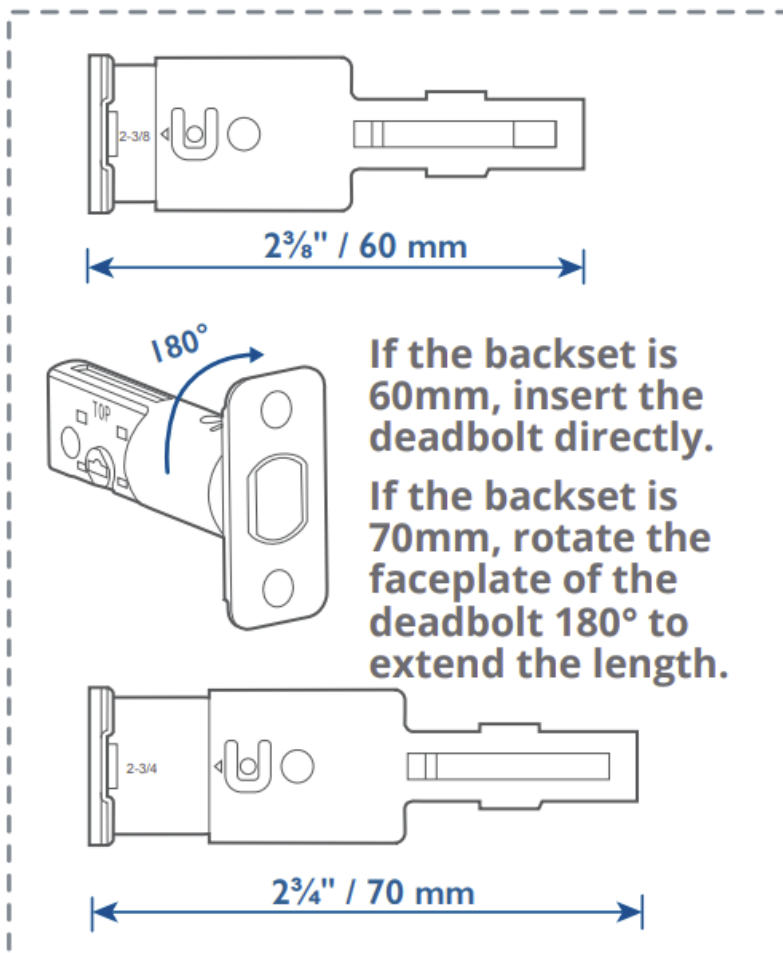
Step 1. Prepare the Door

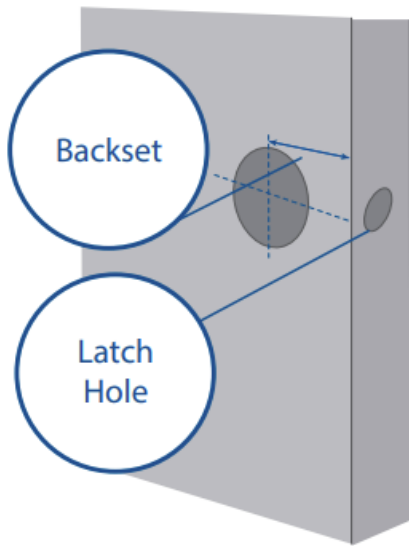
1. Remove the existing lock and check your door.
2. Check if your door has holes like the one below. Standard US doors are already compatible.
 - If not, follow the template to drill holes on your door.



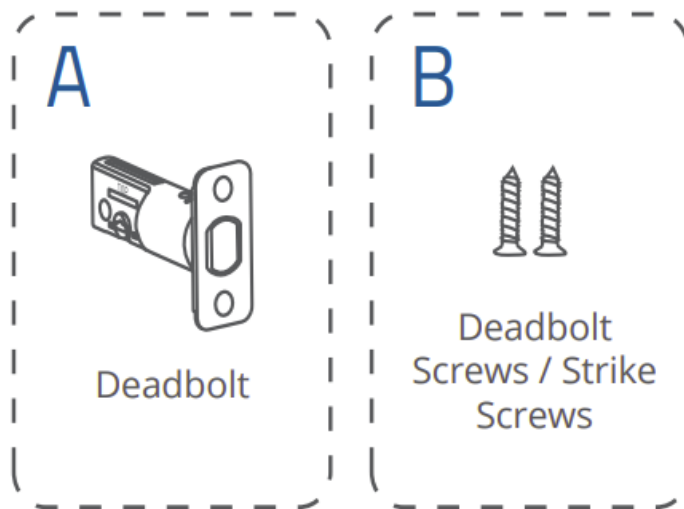
Step 2. Install Deadbolt

1. Check your door to see if the deadbolt requires adjustment.





2. Insert and screw the deadbolt into the doorframe.



Check the latch hole before inserting the deadbolt. If the latch hole is round, refer to diagram A. If the latch hole is rectangular, refer to diagram B.

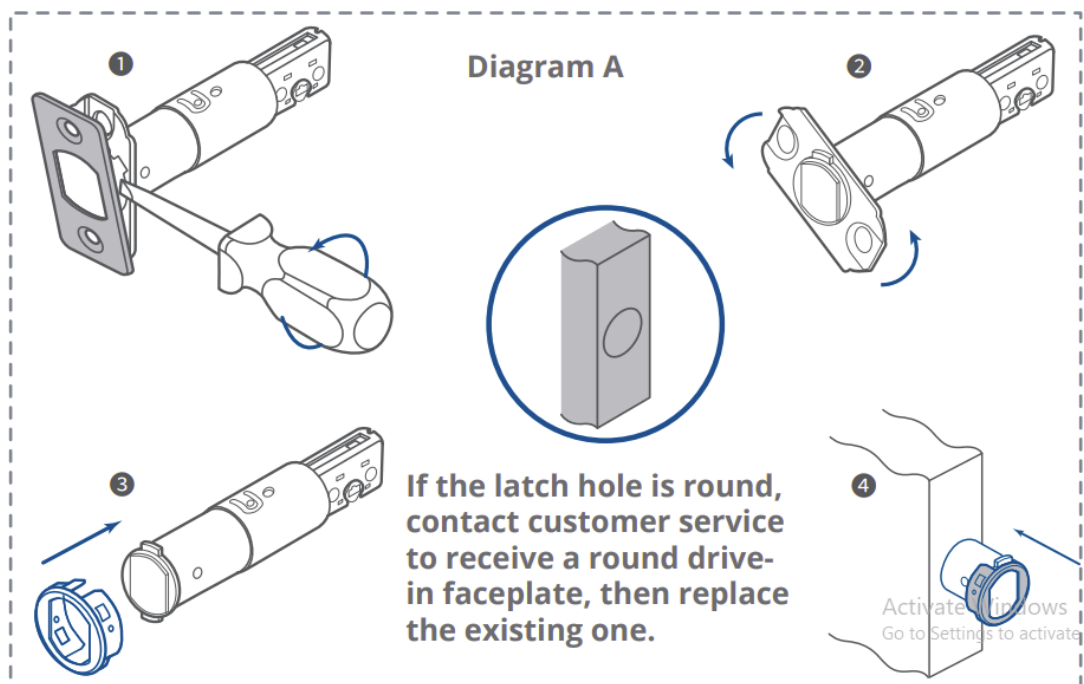
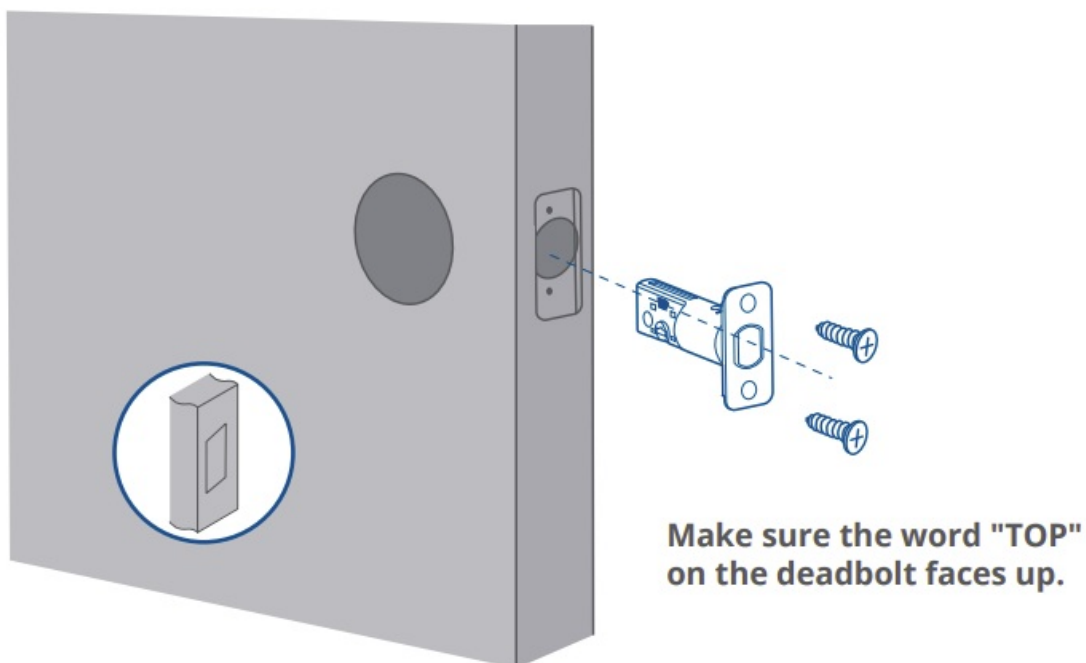
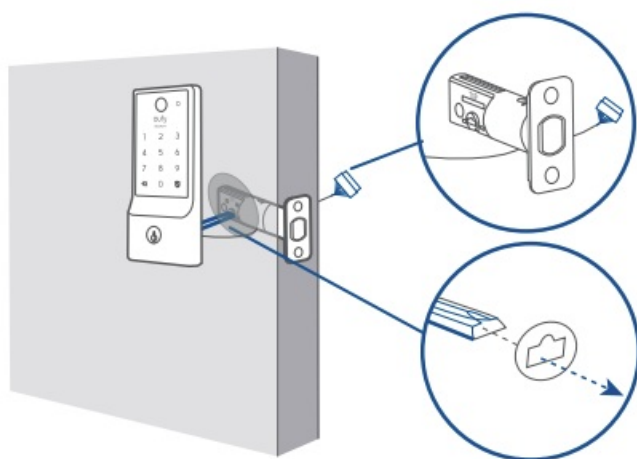
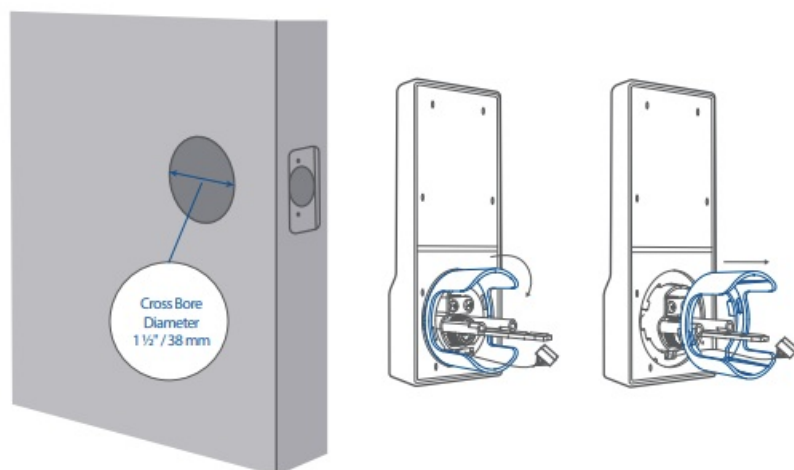


Diagram B



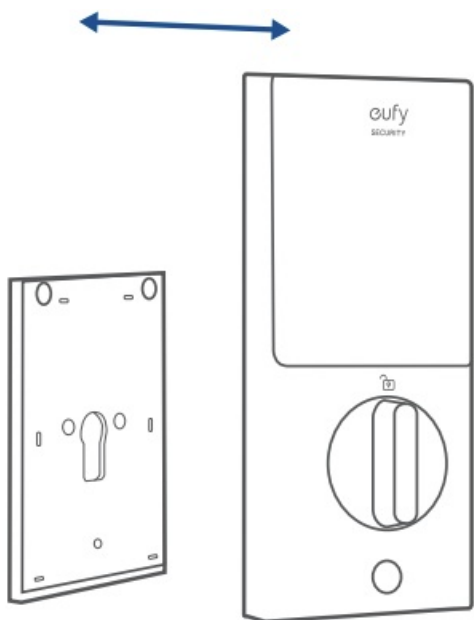
Step 3. Install Exterior Assembly

Remove the spacer before installation if you have a 38 mm cross bore.

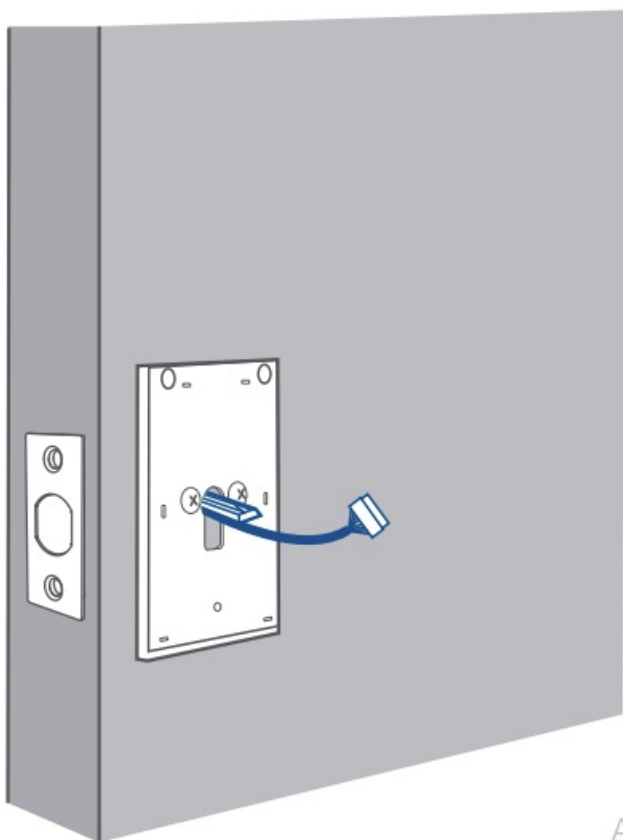


Step 4. Install Interior Assembly

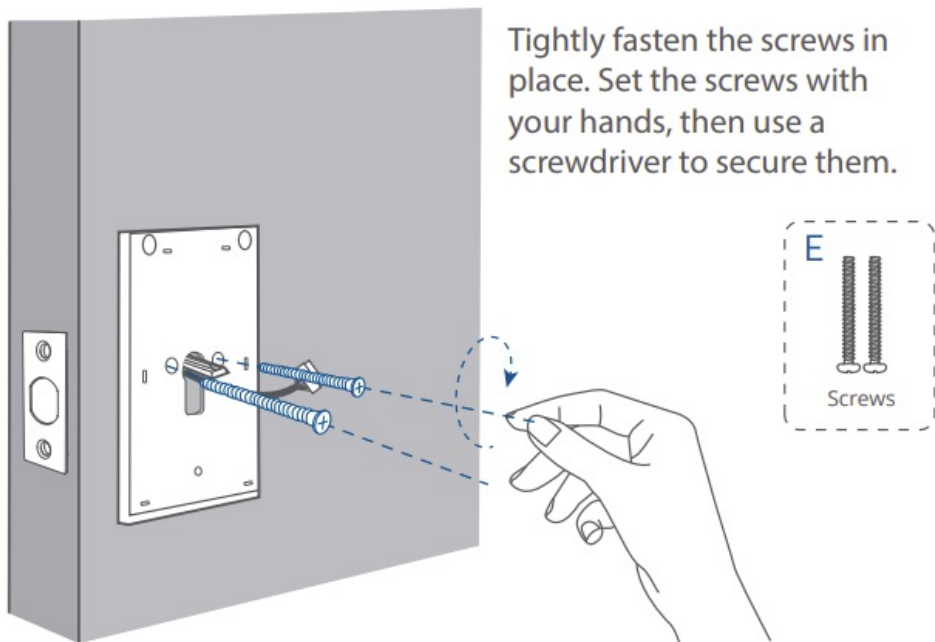
1. Detach the back cover from the interior assembly.



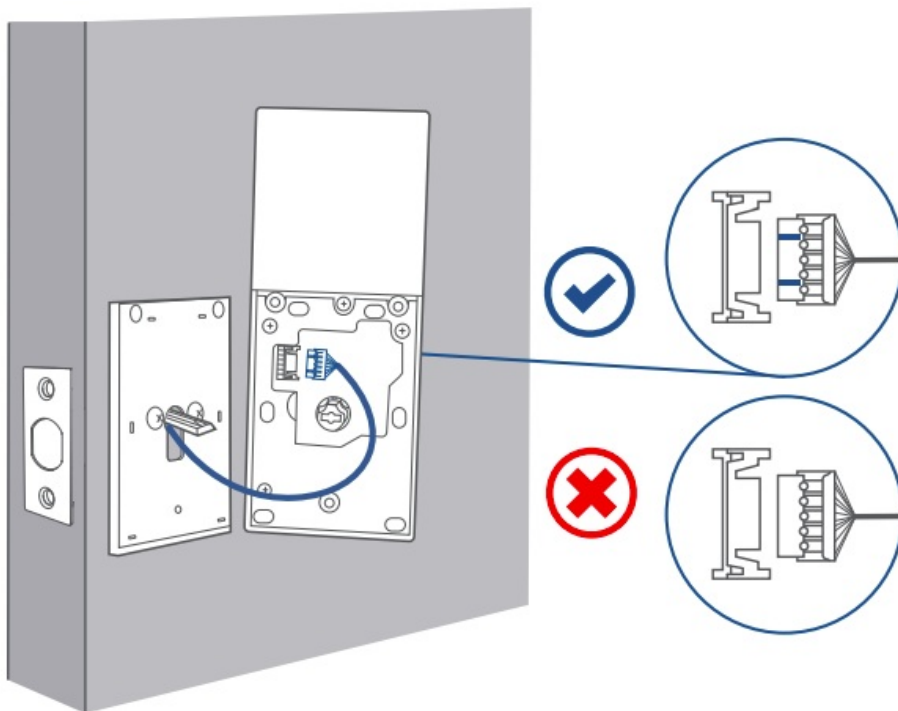
2. Run the wires through the back cover.



3. Secure the back cover with screws.

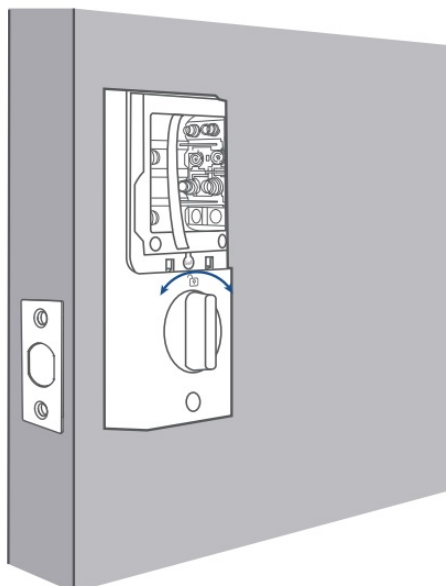
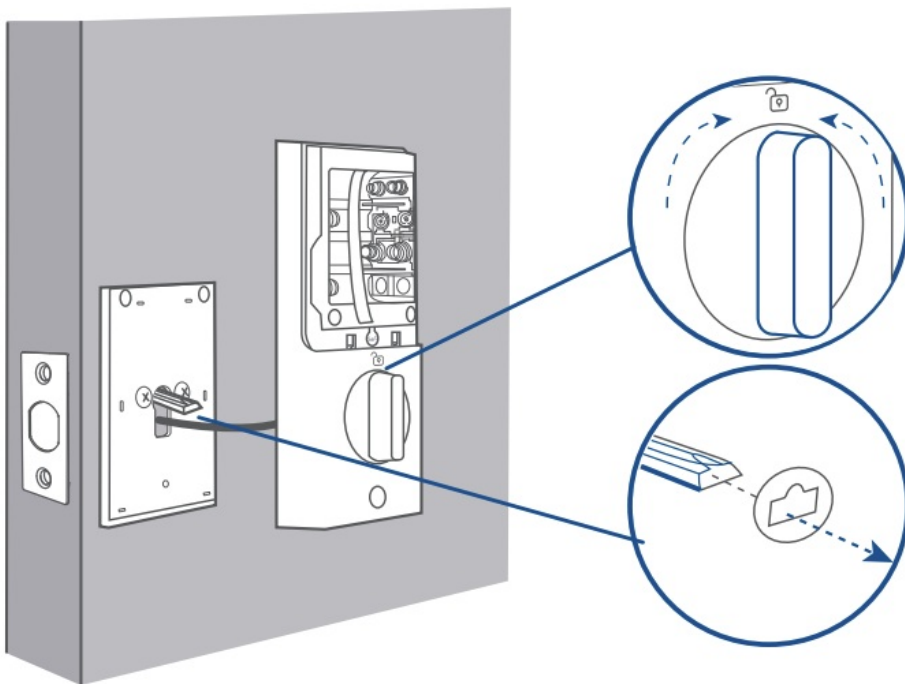


4. Wire to the interior assembly.



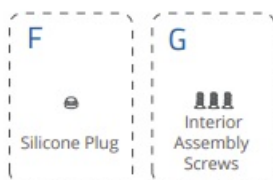
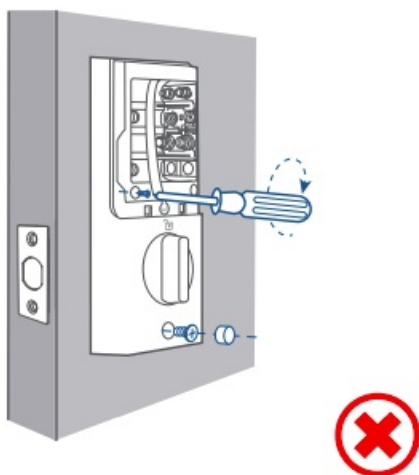
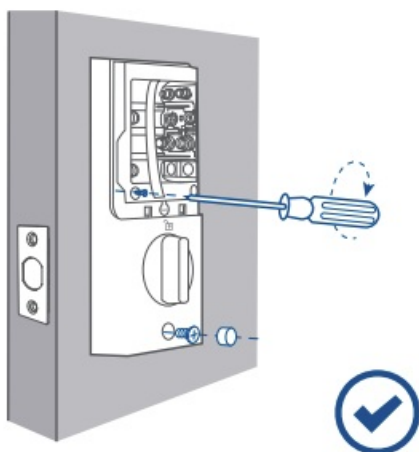
Use a long screwdriver to fasten the Interior Assembly screws.

5. Mount the interior assembly. Make sure both wires are tucked into the cabin on the back of the interior assembly

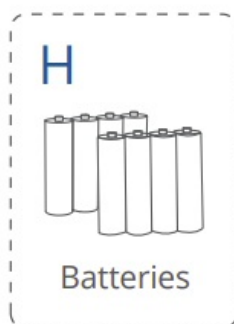
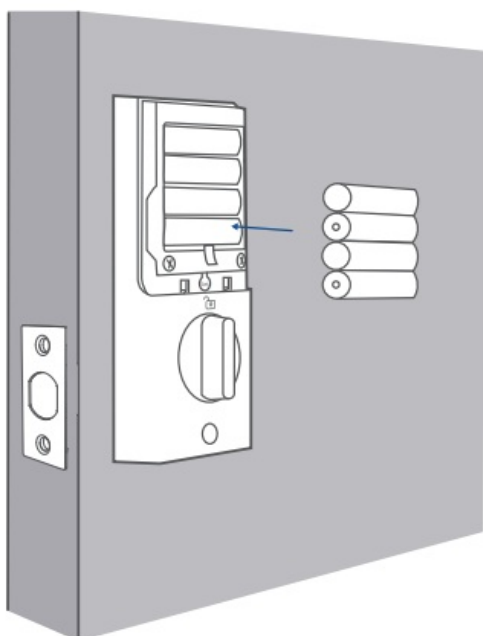


Make sure the deadbolt is retracted and the thumb turn knob is on the 'unlock' position, check if the deadbolt moves properly by turning the thumbturn.

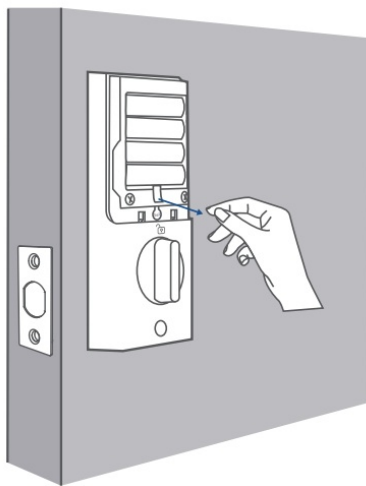
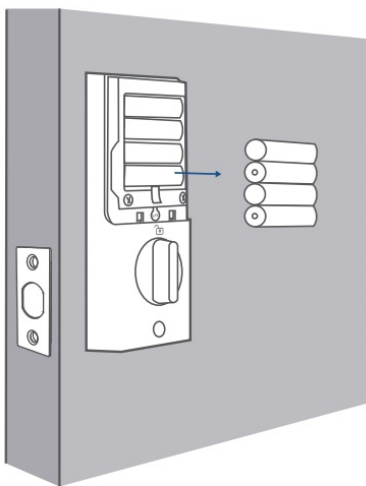
Activate Windows
Go to Settings to activate Wind



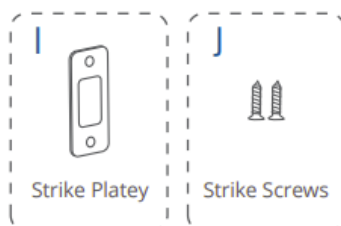
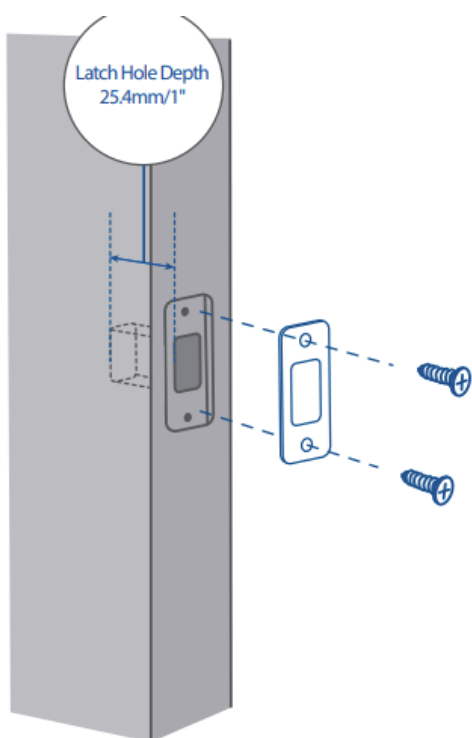
6. Install the 8 AA batteries provided with the correct polarity. Don't put on the cover until the system setup is done in the app.



For your convenience, please first install the bottom layer of 4 AA batteries.



Step 5. Install Strike Plate



Make sure the depth of the latch hole on door frame is deep enough (1" / 25.4 mm), otherwise the calibration might fail during the setup.

SETTING UP THE SYSTEM

1. Download and install the eufy Security app, then sign up for an account.





2. Follow the in-app instructions to add the Smart Lock C220 to your device list.

- Please visit <https://support.eufylife.com/s/> or scan the QR code for more information.



NOTICE

Warning

- replacement of a battery with an incorrect type that can defeat a safeguard;
- disposal of a battery into fire or a hot oven, or mechanically crushing or cutting of a battery, that can result in an explosion;
- leaving a battery in an extremely high temperature surrounding environment that can result in an explosion or the leakage of flammable liquid or gas; and
- a battery subjected to extremely low air pressure that may result in an explosion or the leakage of flammable liquid or gas.

CAUTION RISK OF EXPLOSION IF BATTERY IS REPLACED BY AN INCORRECT TYPE. DISPOSE OF USED BATTERIES ACCORDING TO THE INSTRUCTIONS.

Notice (United States Of America)

FCC Statement This device complies with Part 15 of the FCC Rules. Operation is subject to the following two conditions: (1) this device may not cause harmful interference, and (2) this device must accept any interference received, including interference that may cause undesired operation. Warning: Changes or modifications not

expressly approved by the party responsible for compliance could void the user's authority to operate the equipment.

Note: This equipment has been tested and found to comply with the limits for a Class B digital device, pursuant to Part 15 of the FCC Rules. These limits are designed to provide reasonable protection against harmful interference in a residential installation.

This equipment generates uses and can radiate radio frequency energy and, if not installed and used in accordance with the instructions, may cause harmful interference to radio communications. However, there is no guarantee that interference will not occur in a particular installation. If this equipment does cause harmful interference to radio or television reception, which can be determined by turning the equipment off and on, the user is encouraged to try to correct the interference by one or more of the following measures: (1) Reorient or relocate the receiving antenna. (2) Increase the separation between the equipment and receiver. (3) Connect the equipment into an outlet on a circuit different from that to which the receiver is connected. (4) Consult the dealer or an experienced radio/ TV technician for help.

FCC Radio Frequency Exposure Statement

The device has been evaluated to meet general RF exposure requirements. The device can be used in fixed/mobile exposure condition. The min separation distance is 20cm.

Notice: Shielded cables

All connections to other computing devices must be made using shielded cables to maintain compliance with FCC regulations. The following importer is the responsible party

Company Name: POWER MOBILE LIFE, LLC

Address: 10900 NE 8th St, Ste 501, Bellevue WA 98004

Telephone: 1-800-988-7973

Notice (Australia)

Do not use the Device in the environment at too high or too low temperature, never expose the Device under strong sunshine or too wet environment. The suitable temperature for the device and accessories is -20°C to 50°C. It is recommended to supply the device in an environment with a temperature that ranges from 5°C~25°C. When supplying, please place the device in an environment that has a normal room temperature and good ventilation. Warning:

- replacement of a battery with an incorrect type that can defeat a safeguard;
- disposal of a battery into fire or a hot oven, or mechanically crushing or cutting of a battery, that can result in an explosion;
- leaving a battery in an extremely high temperature surrounding environment that can result in an explosion or the leakage of flammable liquid or gas; and
- a battery subjected to extremely low air pressure that may result in an explosion or the leakage of flammable liquid or gas.



CAUTION RISK OF EXPLOSION IF BATTERY IS REPLACED BY AN INCORRECT TYPE. DISPOSE OF USED BATTERIES ACCORDING TO THE INSTRUCTIONS



Your product is designed and manufactured with high quality materials and components, which can be recycled and reused.



■ This symbol means the product must not be discarded as household waste, and should be delivered to an appropriate collection facility for recycling. Proper disposal and recycling helps protect natural resources, human health and the environment. For more information on disposal and recycling of this product, contact your local municipality, disposal service, or the shop where you bought this product.

Customer Service



12-month limited warranty



US) +1 (800) 988-7973

(UK) +44 (0) 1604 936200

(DE) +49 (0) 69 9579 7960

() +86 400 0550 036

() +81 03 4455 7823

(AU) +61 3 8331 4800

(Egypt) +20 8000000826

(UAE) +971 8000320817

(Kuwait) +965 22069086

(Saudi Arabia) +966 8008500030

(Middle East & Africa) +971 520750842



support@eufy.com

Anker Innovations Limited
Room 1318-19, Hollywood Plaza, 610 Nathan Road,
Mongkok, Kowloon, Hong Kong



EufyOfficial



EufyOfficial

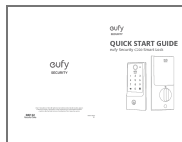


EufyOfficial

eufy

SECURITY

Documents / Resources



[eufy Security T8506 V01 C220 Smart Lock](#) [pdf] User Guide
T8506 V01 C220 Smart Lock, T8506 V01, C220 Smart Lock, Smart Lock, Lock

References

- [eufy Support](#)
- [User Manual](#)

[Manuals+](#), [Privacy Policy](#)

This website is an independent publication and is neither affiliated with nor endorsed by any of the trademark owners. The "Bluetooth®" word mark and logos are registered trademarks owned by Bluetooth SIG, Inc. The "Wi-Fi®" word mark and logos are registered trademarks owned by the Wi-Fi Alliance. Any use of these marks on this website does not imply any affiliation with or endorsement.