
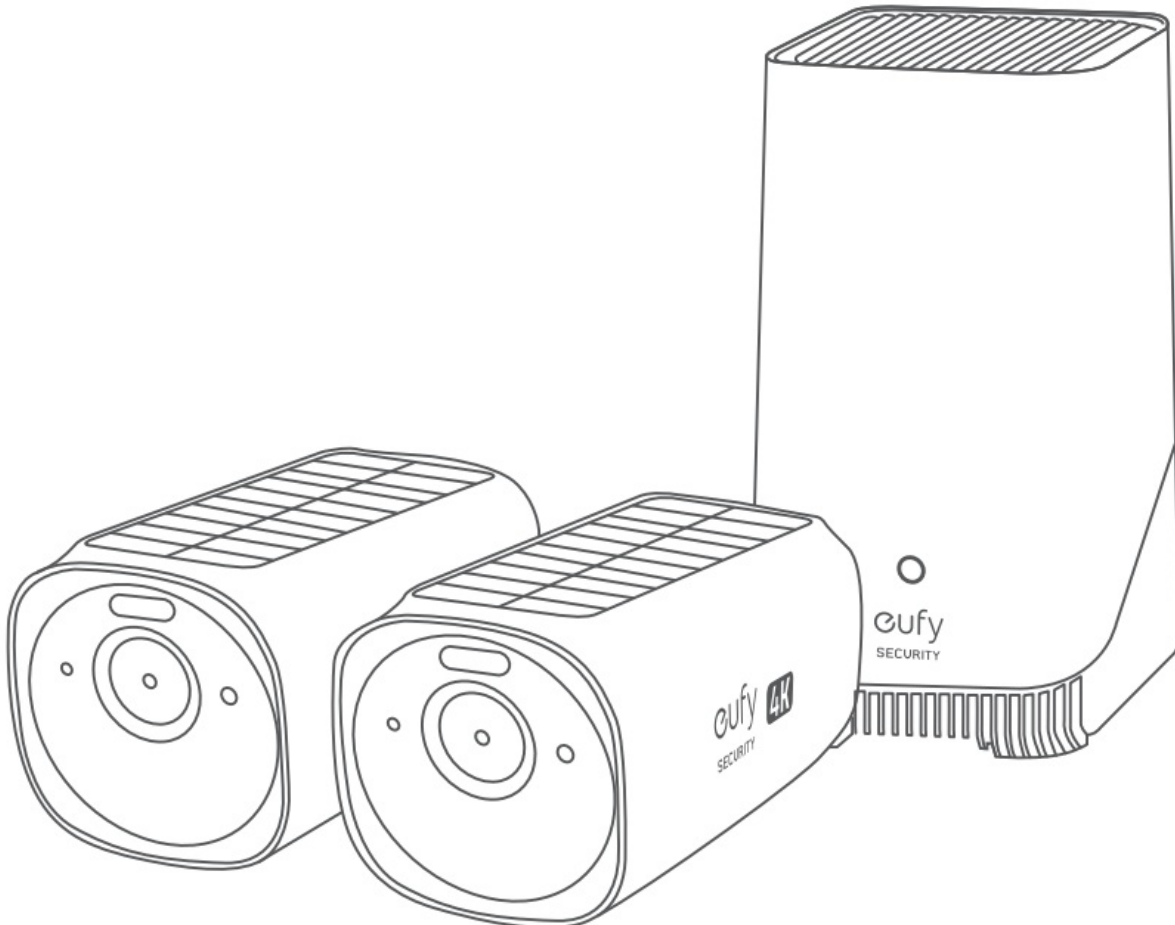




eufy SECURITY S330 eufyCam Add-On Camera User Guide

[Home](#) » [eufy SECURITY](#) » eufy SECURITY S330 eufyCam Add-On Camera User Guide 

eufy SECURITY S330 eufyCam Add-On Camera



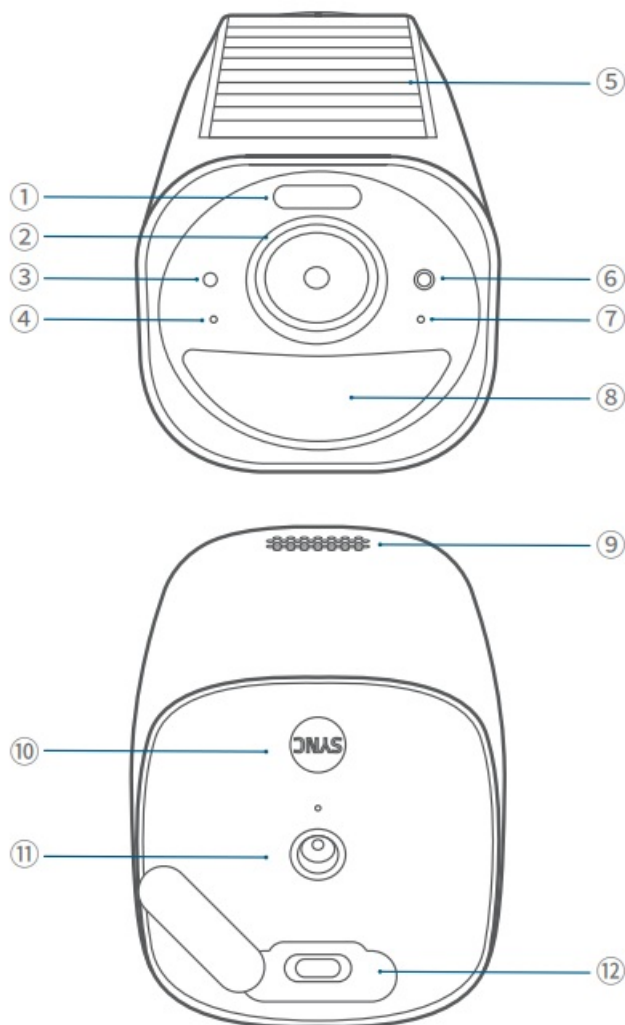
Contents

- 1 AT A GLANCE
- 2 EXPANDING STORAGE
- 3 SETTING UP
- 4 CHARGING THE CAMERA
- 5 MOUNTING THE CAMERA
- 6 SAFETY
- 7 NOTICE
- 8 CUSTOMER SERVICES
- 9 Documents / Resources
 - 9.1 References
- 10 Related Posts

AT A GLANCE

S330 eufyCam

Model: T8160

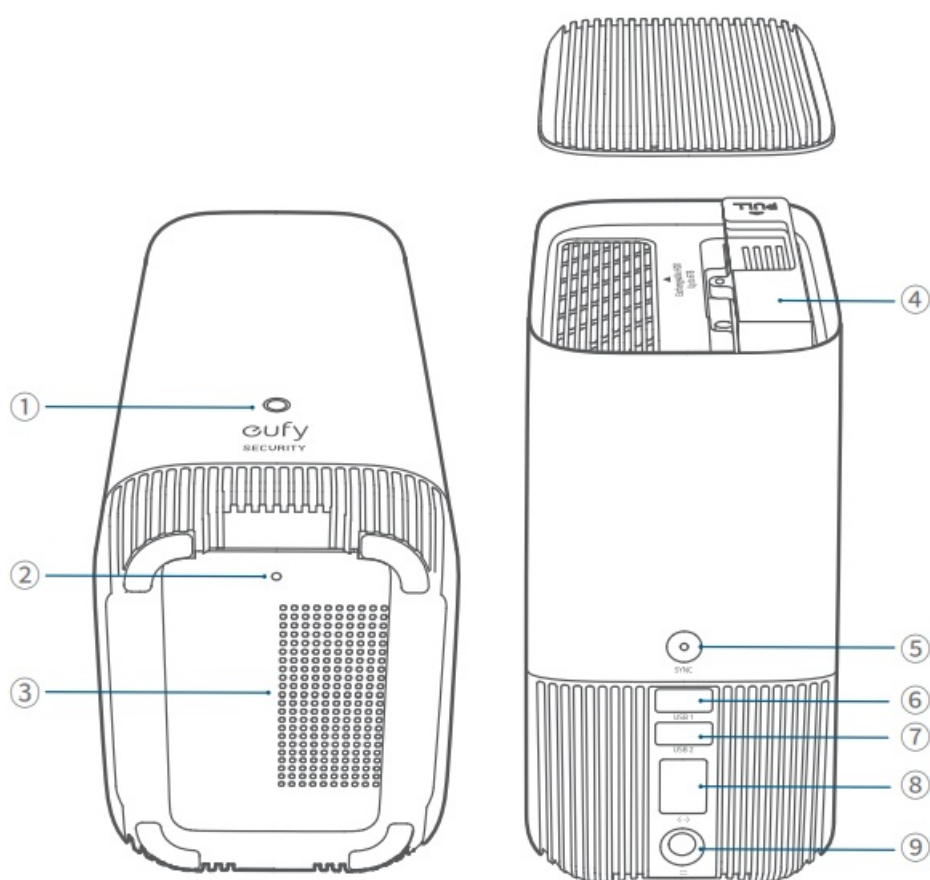


- 1. Spotlight
- 2. Camera Lens
- 3. Photosensitive Sensor
- 4. Microphone 1

5. Solar Pane
6. LED Indicator
7. Microphone 2
8. Motion Sensor
9. Speaker
10. SYNC Button
11. Mounting Hole
12. USB-C Charging Port

S380 HomeBase

Model: T8030



1. Status LED
2. Reset Hole
3. Speaker
4. Hard Drive Bracket
5. SYNC / ALARM OFF Button
6. USB Port 1
7. USB Port 2
8. Ethernet Port
9. Power Port

EXPANDING STORAGE

(OPTIONAL)

S380 HomeBase comes with 16 GB of storage for saving video recordings and allows you to add an additional hard drive to expand the space.

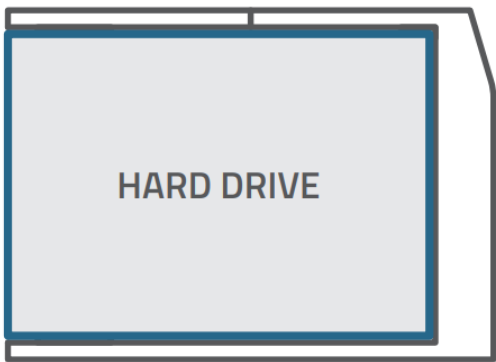
Prepare Your Hard Drive

Your hard drive must meet the following requirements:

Type	Hard disk drive (HDD) or solid state drive (SSD) that uses the SATA interface
Size	2.5 inch
Capacity	Unlimited
Recommended	Western Digital, Seagate, SAMSUNG, Kingston, PNY, Crucial, SanDisk



Transfer all the data in your hard drive to a secure location before adding it to S380 HomeBase.

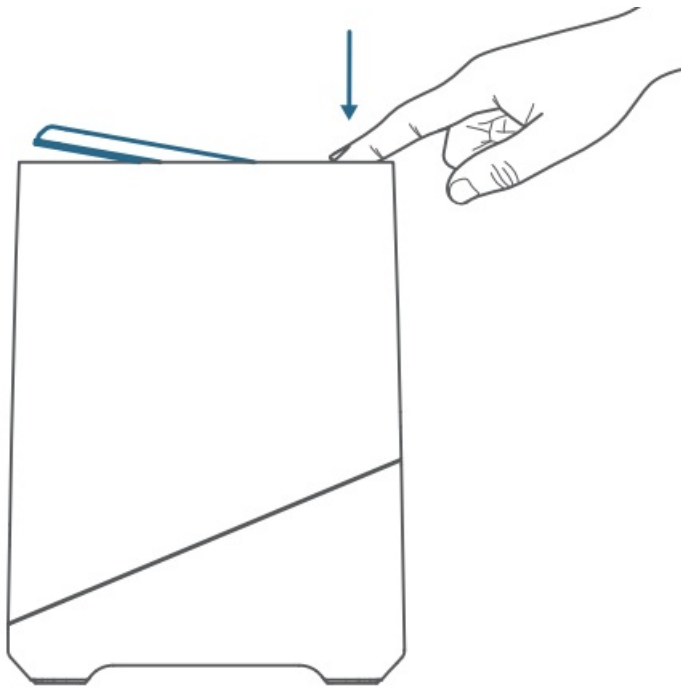


Install Your Hard Drive

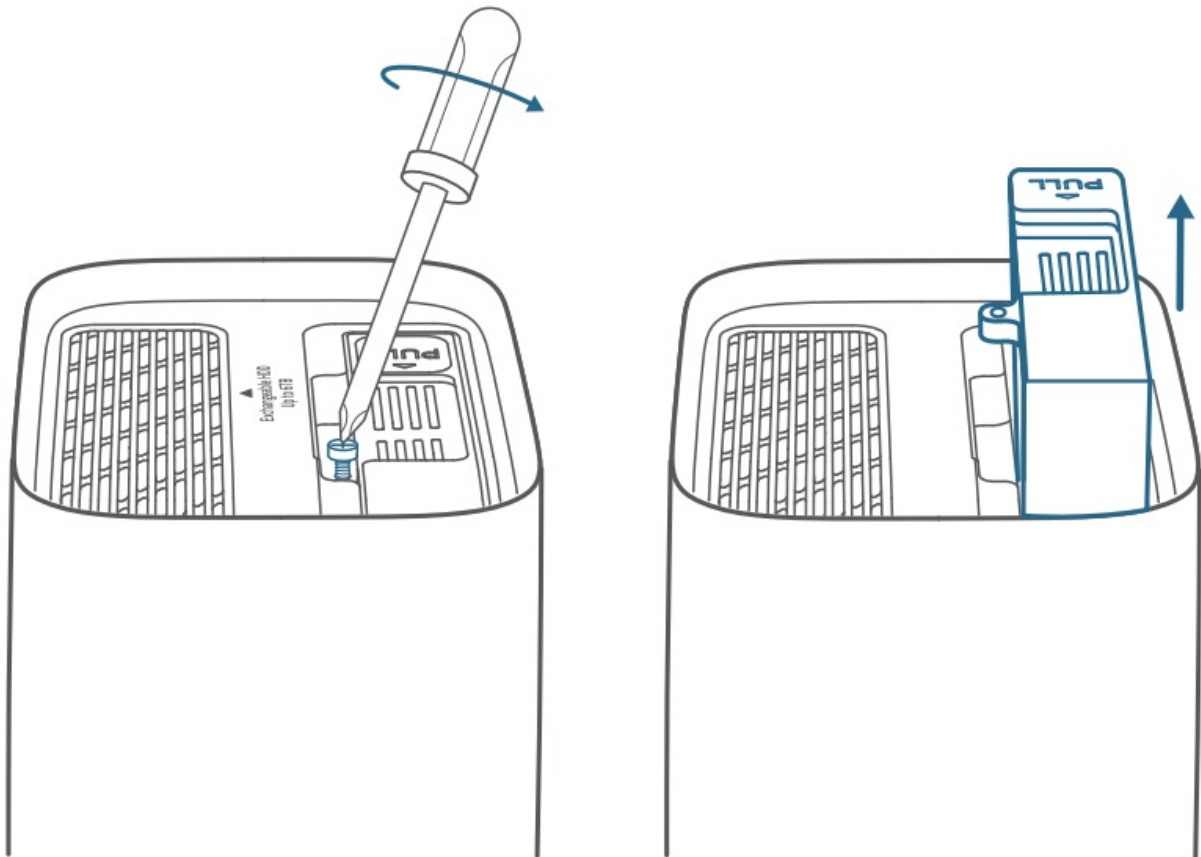


S380 HomeBase must be powered off when you install or remove a hard drive.

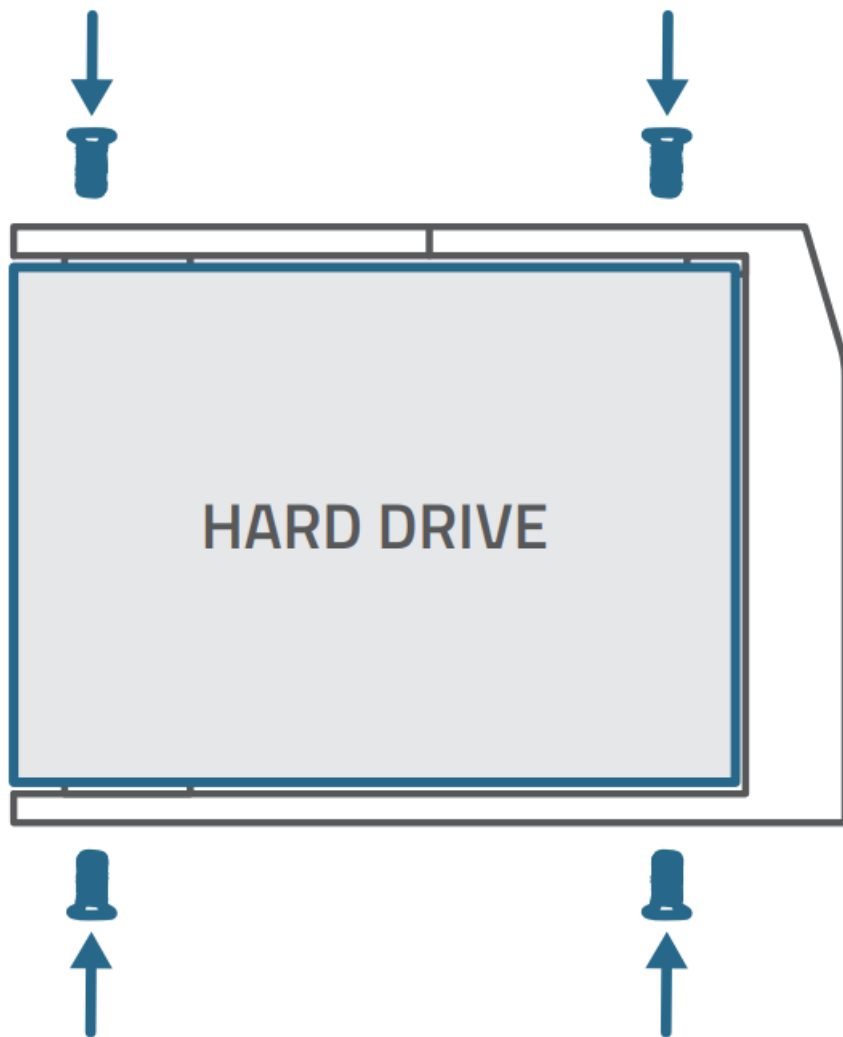
1. Push down the top lid to remove it.



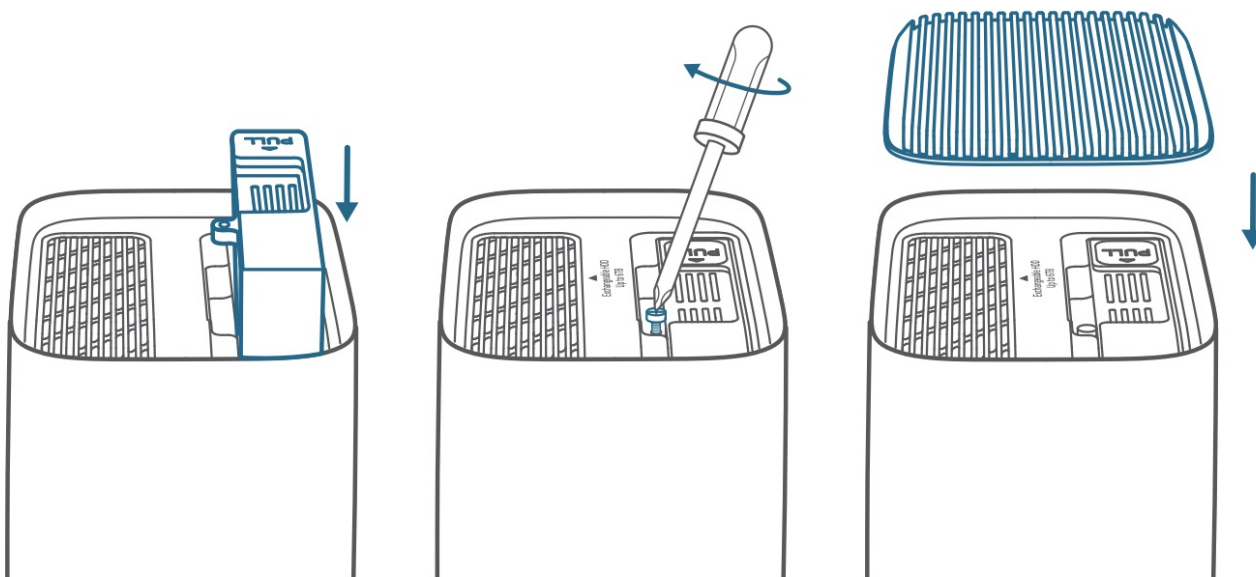
2. Loosen the screw, then pull out the hard drive bracket.



3. Fix your hard drive to the bracket with the provided screws.



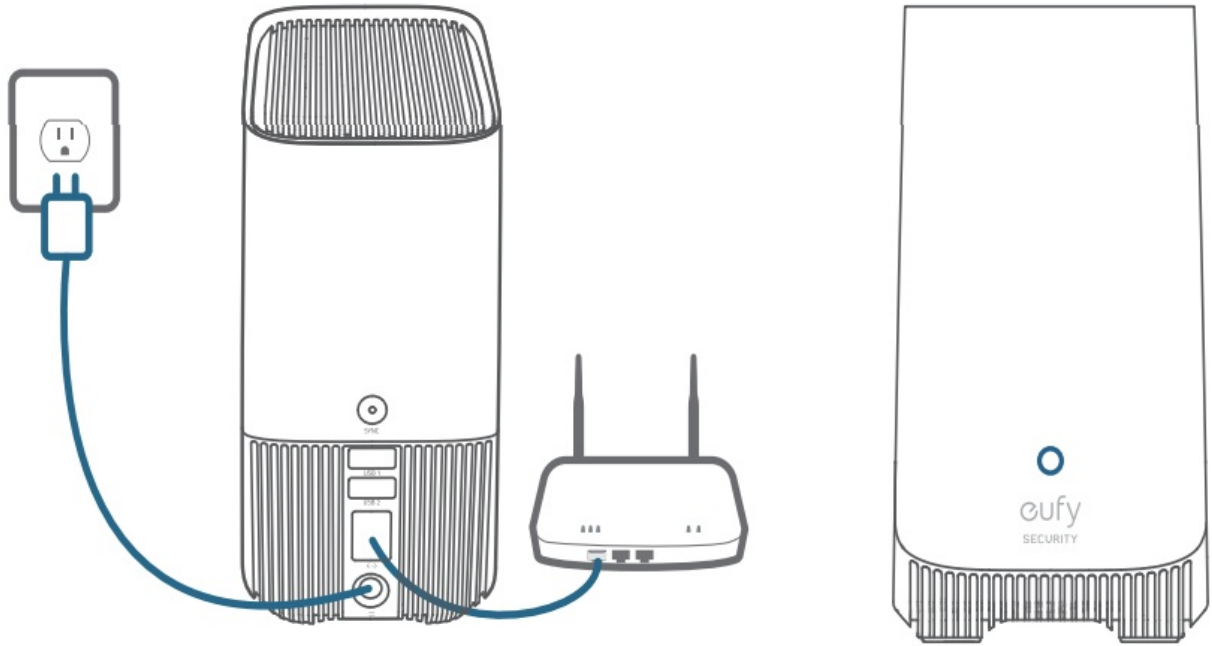
4. Insert and screw the bracket back to S380 HomeBase, then put the top lid back into place.



- You can follow the steps above to expand the storage whenever necessary.
- A new hard drive must be initialized through the eufy Security app to work with S380 HomeBase.

SETTING UP

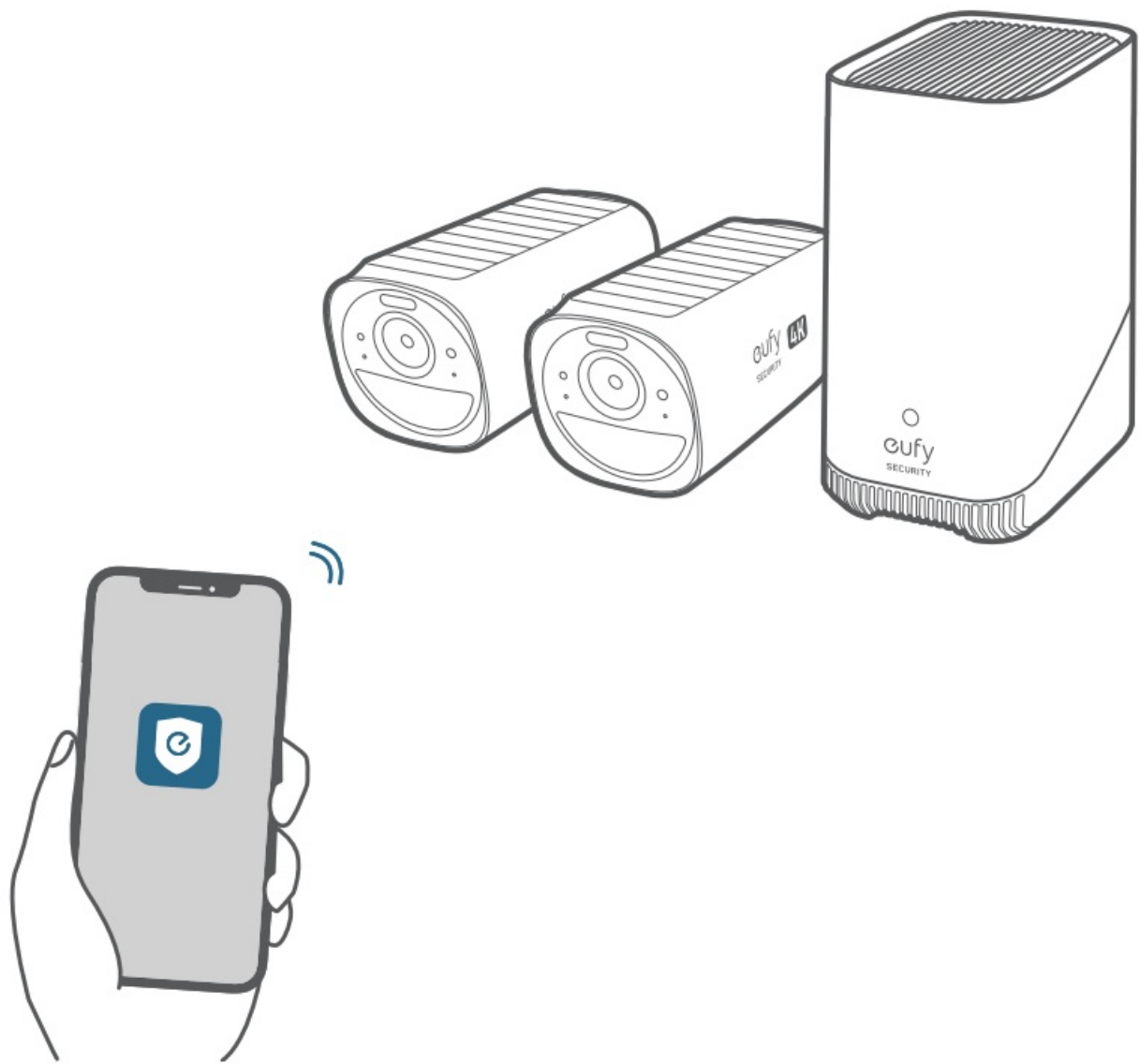
1. Power and connect S380 HomeBase to your router. The LED indicator will turn blue (This may take about 1 min) when S380 HomeBase is ready for setup.



2. Download and install the eufy Security app, then sign up for an account.



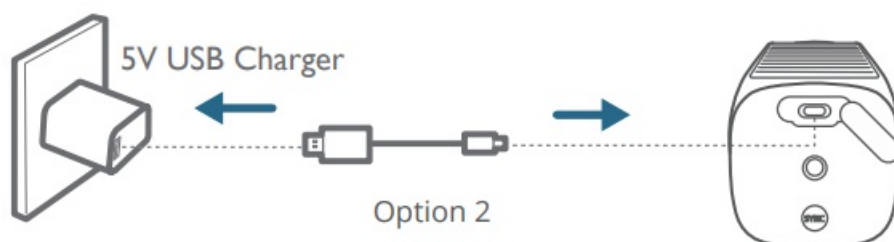
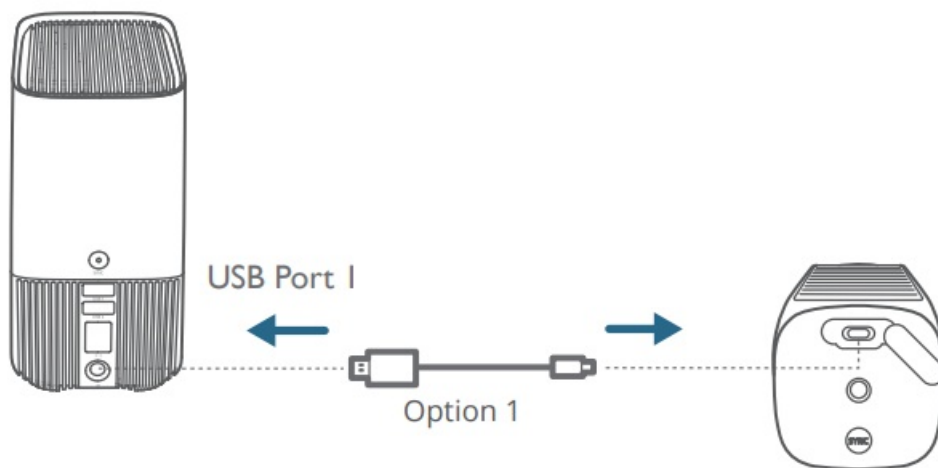
3. Follow on-screen instructions to add S380 HomeBase and the cameras to your device list(*).



* One S380 HomeBase can pair up to 16 cameras.

CHARGING THE CAMERA

Fully charge both cameras before first use. This may take about 8 hours for each.

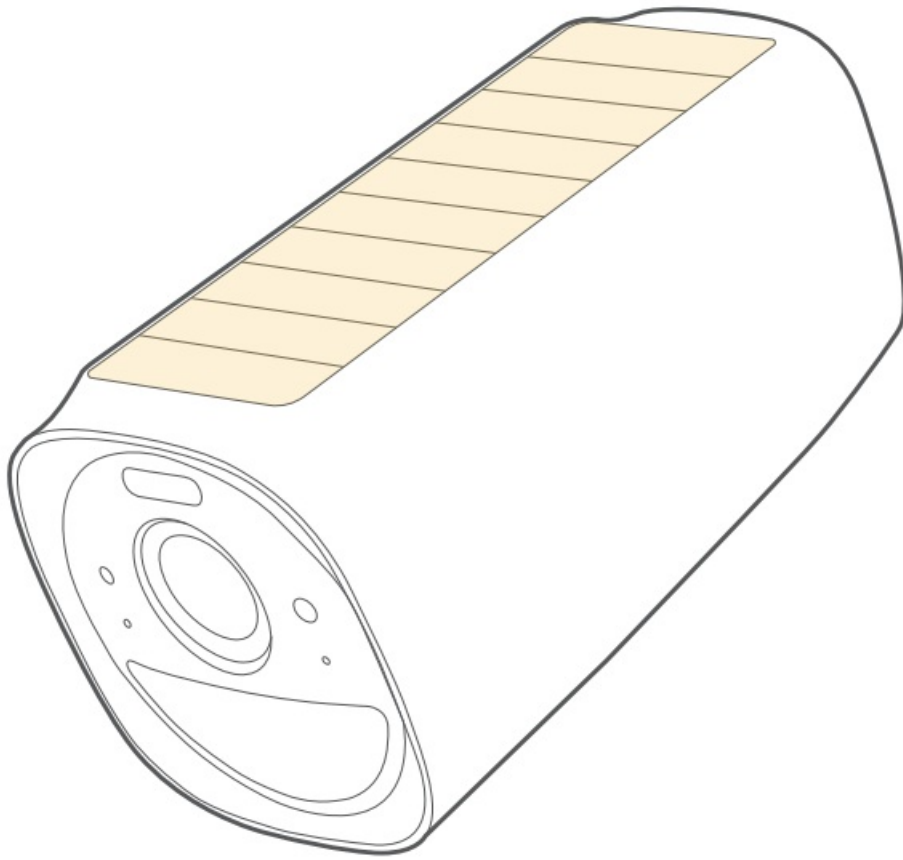


LED Indicator	Description
Blue	Charging
OFF	Fully charged

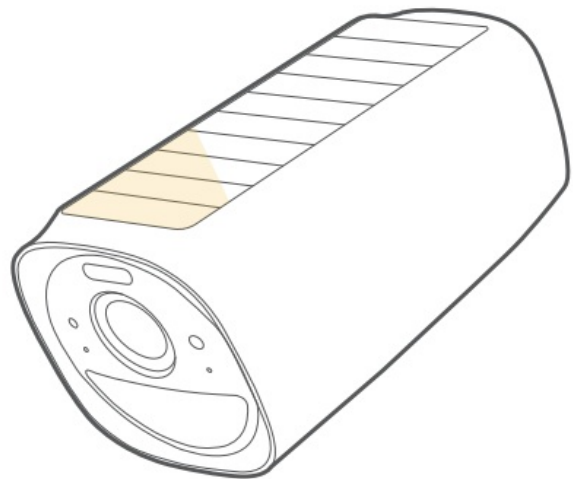
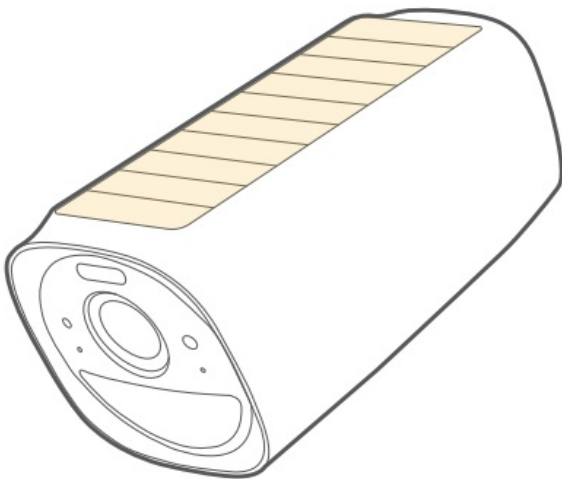
S330 eufyCam includes a solar panel that converts sunlight into electrical energy and keeps the built-in battery charged every day.





The charging efficiency fluctuates according to the intensity of the sunlight.

Don't worry when the battery level goes down. It happens when there isn't enough sunlight or the camera is consuming more power than usual. You don't need to charge the camera with a cable until a low battery alarm goes off.



2 HOURS PER DAY*



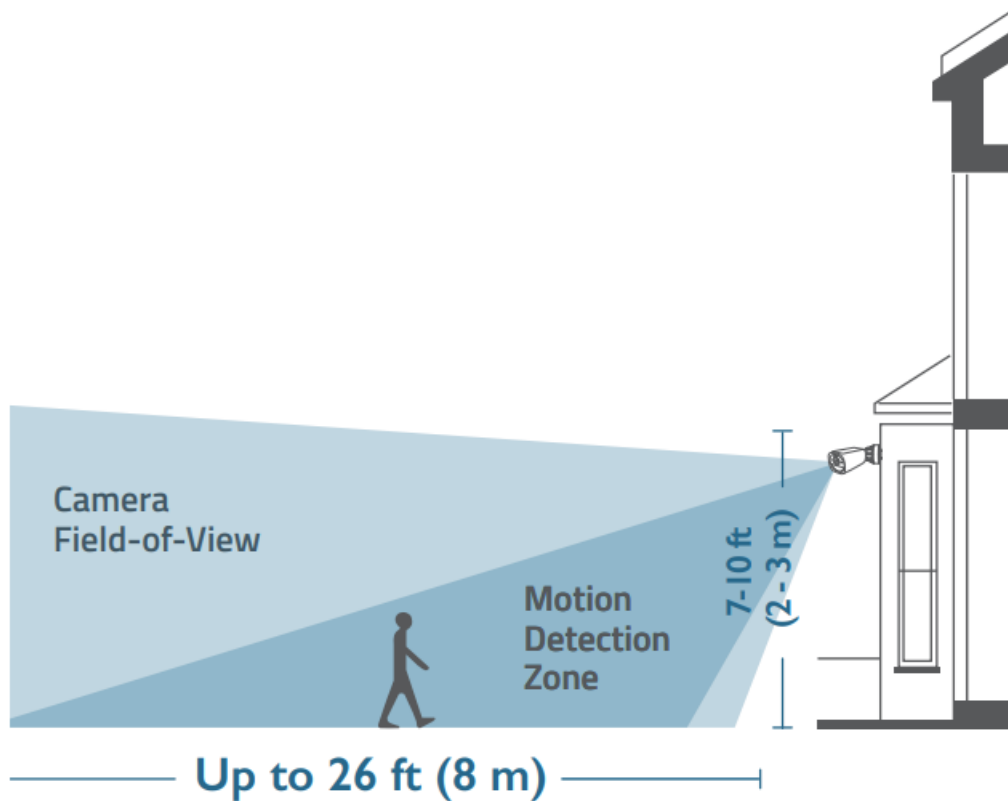
	
	

* Make sure the solar panel can be fully exposed to direct sunlight for at least 2 hours per day.

MOUNTING THE CAMERA

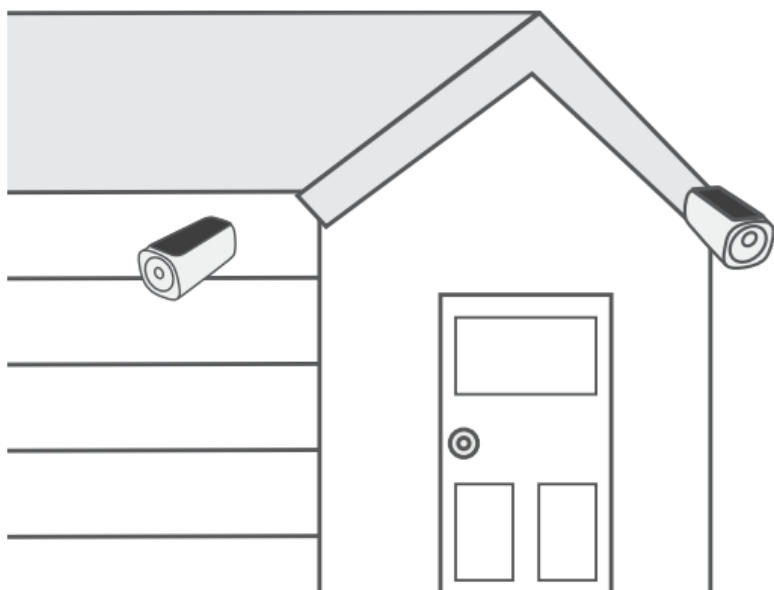
Select a Location

Select a location where you can get the desired view. We recommend hanging the camera 7-10 ft (2-3 m) above the ground.



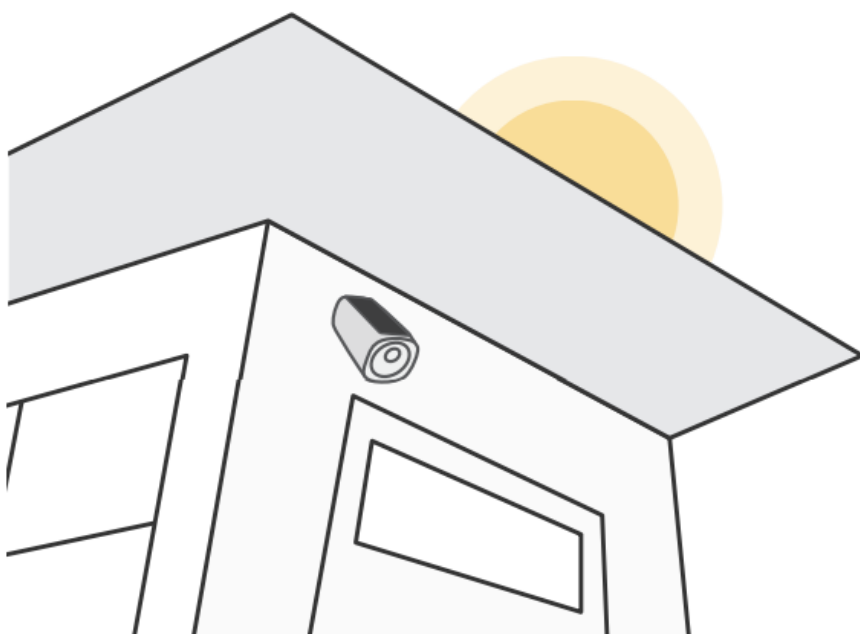
Best places to install:

- Wall without eaves
- A pole or fence where sunlight is not blocked
- Over eaves, if the eaves are below 3 m high



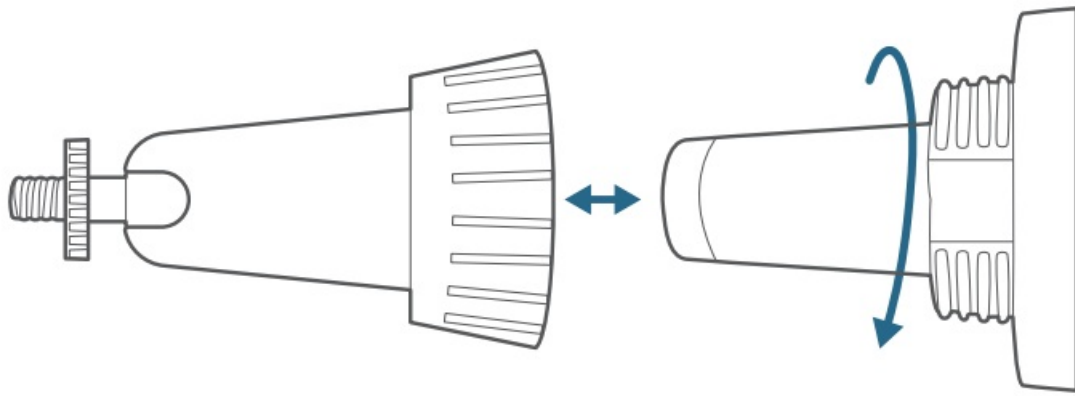
Places not to install:

- Inside your home or under the porch
- Under or on a tree
- Under slanted eaves

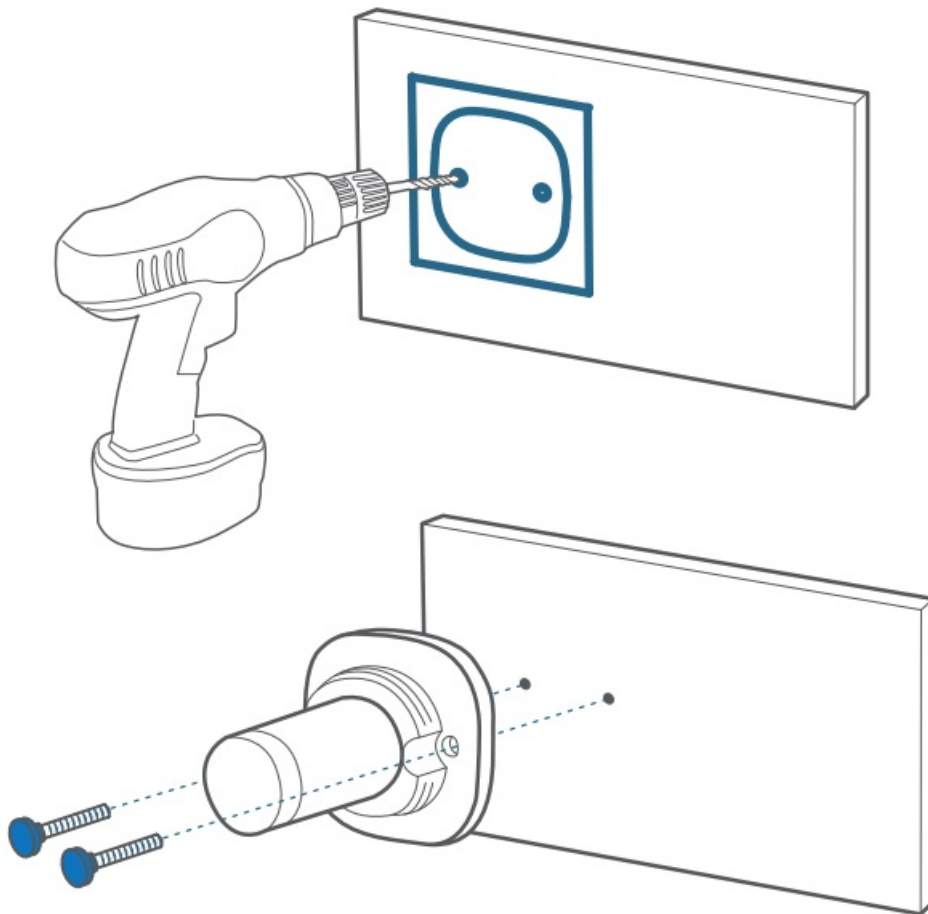


Mount the Camera

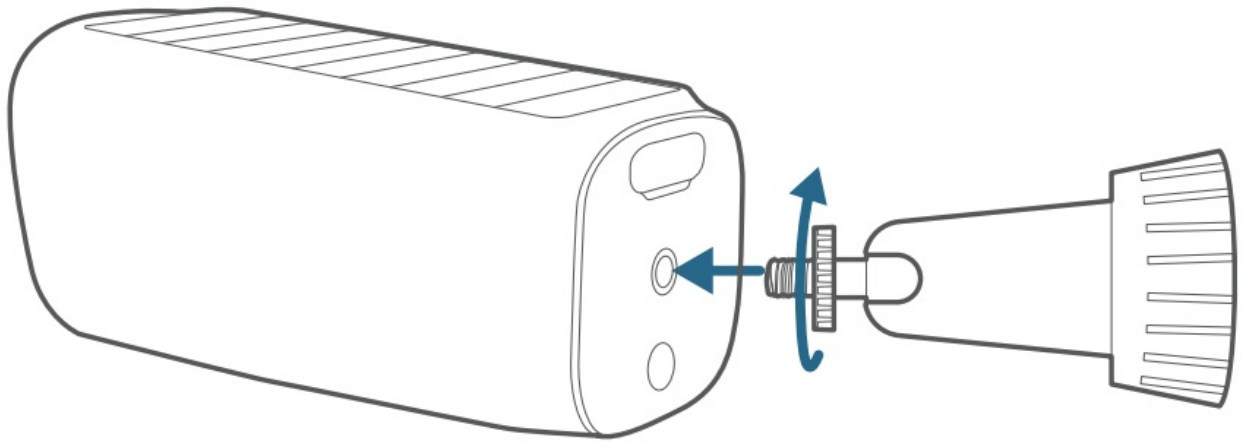
1. Turn the knob of the mounting bracket counterclockwise to loosen and disassemble it.



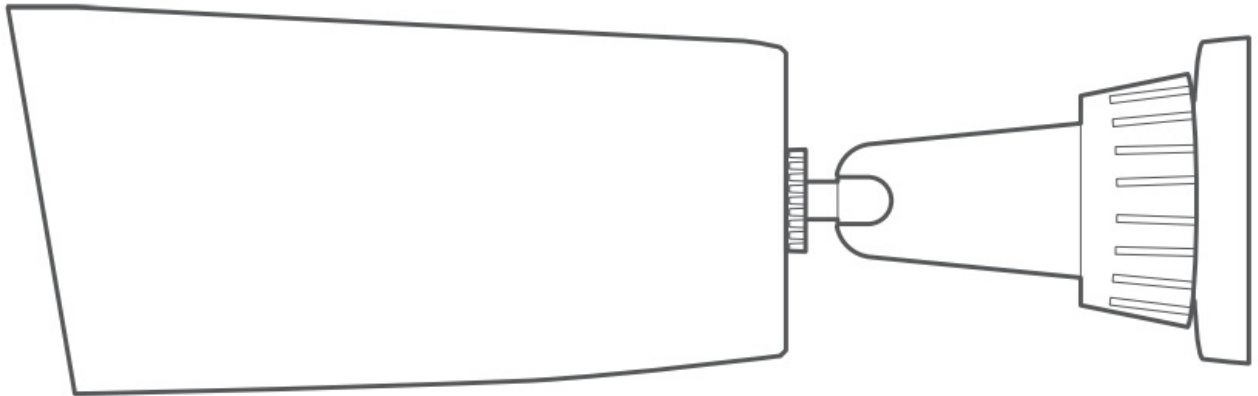
2. Drill holes with a 15/64 inch (6 mm) drill bit, then insert the anchors into the holes; anchors are necessary for walls that are made out of hard materials such as concrete, brick, or stucco.



3. Firmly screw the knob of the mounting bracket into the mounting hole.



4. Hold and screw the camera to the mounting bracket. Rotate the camera to adjust the view and check it using the live stream, which you can access in the eufy Security app.



For troubleshooting, check Help on the eufy Security app. Refer to the app page for LED indicator status.

SAFETY

- Do not use the device in the environment at a too high or too low temperature, never expose the device to strong sunshine or too wet environment.
- The suitable temperature for T8030 and accessories is -10°C to 45°C .
- The suitable temperature for T8160 and accessories is -20°C to 50°C (Charging temperature is 0°C to 45°C).
- It is recommended to supply the device in an environment with a temperature that ranges from 5°C ~ 25°C .
- When supplying, please place the device in an environment that has a normal room temperature and good ventilation.
- The adapter shall be installed near the equipment and shall be easily accessible.
- Please ensure to use only the adapter offered by the manufacturer. Using unauthorized adapter may cause danger and violate the authorization of the device and the guarantee article.
- This adapter is for indoor use only. The adapter type (for S380 HomeBase) is KA2401A-1202000DE, rated output voltage/current is 12 Vdc/2A. The plug is considered as disconnect device of adapter.

Warning:

- Replacement of a battery with an incorrect type can defeat a safeguard;
- Disposal of a battery into fire or a hot oven, or mechanically crushing or cutting of a battery can result in an

explosion;

- Leaving a battery in an extremely high temperature surrounding environment can result in an explosion or the leakage of flammable liquid or gas; and
- A battery subjected to extremely low air pressure may result in an explosion or the leakage of flammable liquid or gas.



CAUTION: RISK OF EXPLOSION IF BATTERY IS REPLACED BY AN INCORRECT TYPE.
DISPOSE OF USED BATTERIES ACCORDING TO THE INSTRUCTIONS.

NOTICE

NOTICE (Europe and United Kingdom)



This product complies with the radio interference requirements of the European Community.

Declaration of Conformity

Hereby, Anker Innovations Limited declares that this device is in compliance with the essential requirements and other relevant provisions of Directive 2014/53/EU. For the declaration of conformity, **visit the website:**
<https://uk.eufylife.com>.



This product complies with the radio interference requirements of the United Kingdom

Declaration of Conformity

Hereby, Anker Innovations Limited declares that this device is in compliance with Radio Equipment Regulations 2017(SI 2017/1206). The full text of the UK declaration of conformity is available at the following internet **address:**
<https://uk.eufylife.com>.

RF exposure information:

The Maximum Permissible Exposure (MPE) level has been calculated based on a distance of d=20 cm between the device and the human body. To maintain compliance with RF exposure requirement, use products that maintain a 20cm distance between the device and human body. Frequency bands and power as below:

Function	Bandes	Operation Frequency	Max. Power
Sub-1 G for T8030	Sub-1G	866-866.8 MHz	ERP 12.973 dBm
Wi-Fi for T8030	2.4GHz	2412-2472MHz	EIRP 19.58 dBm
Wi-Fi for T8160	2.4GHz	2412-2472MHz	EIRP 19.86 dBm

The following importer is the responsible party (contract for EU matters): Anker Innovations Deutschland GmbH | Georg-Muche-Strasse 3, 80807 Munich, Germany

The following importer is the responsible party (contract for UK matters): Anker Technology (UK) Limited I GNR8, 49 Clarendon Road, Watford, Hertfordshire, WD17 1HP, United Kingdom



Your product is designed and manufactured with high quality materials and components, which can be recycled and reused.



■ This symbol means the product must not be discarded as household waste, and should be delivered to an appropriate collection facility for recycling. Proper disposal and recycling helps protect natural resources, human health and the environment. For more information on disposal and recycling of this product, contact your local municipality, disposal service, or the shop where you bought this product.

Anker Innovations Limited

Room 1318-19, Hollywood Plaza, 610 Nathan Road, Mongkok, Kowloon, Hong Kong

CUSTOMER SERVICES



12-month limited warranty



United States

+1 (800) 988 7973

Mon-Sat 6:15AM-6:45PM(PT)

Sun 6:15AM-5:45PM(PT)

United Kingdom

+44 (0) 1604 936 200

Mon-Sun 6:00-19:00

Germany

+49 (0) 69 9579 7960

Mo-Fr 8:00-16:00 Sa 9:00-16:00



support@eufylife.com



@EufyOfficial



@EufyOfficial



@EufyOfficial


Anker Innovations Limited Room 1318-19, Hollywood Plaza, 610 Nathan Road, Mongkok, Kowloon, Hong Kong

Anker Innovations Limited. All rights reserved.

eufy Security and eufy Security Logo QUICK START GUIDE are trademarks of Anker Innovations Limited, registered in the United States and other countries. All other trademarks are the property of their respective owners.



Documents / Resources

	eufy SECURITY S330 eufyCam Add-On Camera [pdf] User Guide S330 eufyCam Add-On Camera, S330, eufyCam Add-On Camera, Add-On Camera, Camera
---	---

References

- [eufy | Smart Home Simplified - eufy UK](#)

Manuals+.