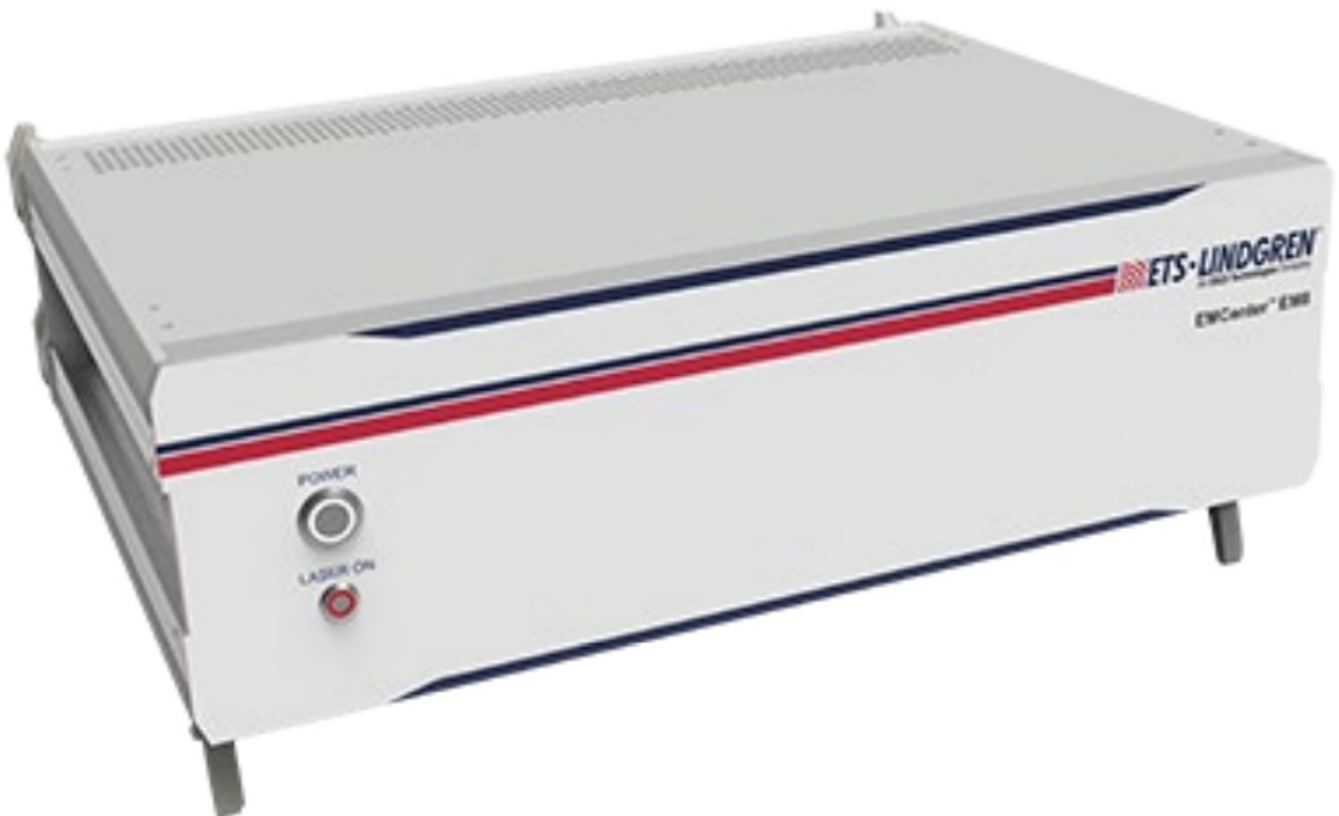




ETS-LINDGREN EM8 Modular Test System Instruction Manual

[Home](#) » [ETS LINDGREN](#) » ETS-LINDGREN EM8 Modular Test System Instruction Manual 

ETS-LINDGREN EM8 Modular Test System



Contents

- 1 Copyright and Trademark
- 2 Revision Record
- 3 Safety Information
- 4 Notes, Cautions, and Warnings
- 5 Introduction
- 6 Operation
- 7 Specifications
- 8 Appendix A: EC Declaration on Conformity
- 9 Documents / Resources
 - 9.1 References

Copyright and Trademark

ETS-Lindgren Inc. reserves the right to make changes to any products herein to improve functioning or design. Although the information in this document has been carefully reviewed and is believed to be reliable, ETS-Lindgren Inc. does not assume any liability arising out of the application or use of any product or circuit described herein; nor does it convey any license under its patent rights nor the rights of others. All trademarks are the property of their respective owners.

© Copyright 2023-2024 by ETS-Lindgren Inc. All Rights Reserved. No part of this document may be copied by any means without written permission from ETS-Lindgren Inc.

Trademarks used in this document: The ETS-Lindgren logo is a registered trademark, and EM Center, EM Switch, EM Power, EM Control, EM Sense, EM Sense 10/40, EM Link, EM Field, TILE!, and EM Quest are trademarks of ETS-Lindgren Inc.

Revision Record

MANUAL, EM8 | Part #1788365, Rev. A

Revision	Description	Date
A	Initial Release	FEB, 2024

Safety Information



High Voltage: Indicates presence of hazardous voltage. Unsafe practice could result in severe personal injury or death.



Protective Earth Ground (Safety Ground): Indicates protective earth terminal. You should provide uninterruptible safety earth ground from the main power source to the product input wiring terminals, power cord, or supplied power cord set.



Laser Warning: Denotes a laser (class 1M) is part of the operating system of the device.



Waste Electrical and Electronic Equipment (WEEE) Directive: (European Union) At end of useful life, this product should be deposited at an appropriate waste disposal facility for recycling and disposal. Do not dispose of with household waste.

Notes, Cautions, and Warnings



Note: Denotes helpful information intended to provide tips for better use of the product.



CAUTION: Denotes a hazard. Failure to follow instructions could result in minor personal injury and/or property damage. Included text gives proper procedures.

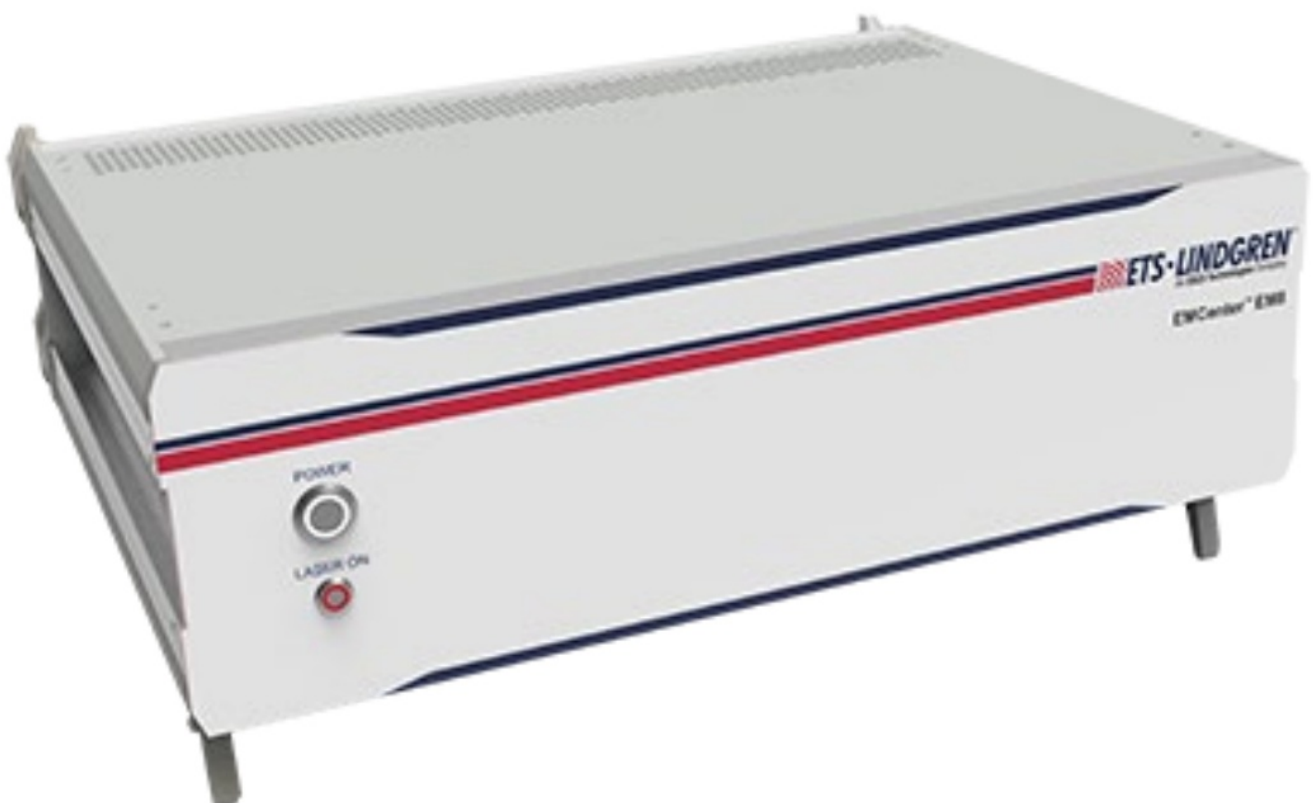


WARNING: Denotes a hazard. Failure to follow instructions could result in SEVERE personal injury and/or property damage. Included text gives proper procedures.

Introduction

ETS-Lindgren's EM Center™ EM8 is the latest member of the EM family of products capable of significantly higher data collection speeds.

The EM Center™ EM8 Modular Test System forms the heart of many different EMC and RF test systems. The EM Center has the ability to store up to eight (8) instrument plug-in cards, which can all be controlled and used simultaneously. The 1 Gigabit LAN interface, providing some of the fastest acquisition in the industry, makes the EM Center EM8 the ideal hardware platform for applications requiring multiple channels and fast measurements, like automotive mode-stir (reverberation chamber) testing or switching applications.



Product Features

- Fast Measurements
 - The EM Center EM8 is equipped with a 1 Gigabit LAN interface. Each instrument that is installed in the eight slots can be directly controlled at a designated IP address, allowing for fast measurement throughout.
- Laser safety
 - The EM Center EM8 is equipped with a laser ON/OFF switch to prevent accidental operation and/or starting the laser power supply of the EM Sense™ probes.
- Flexible
 - Each of the eight slots can be configured by the user, allowing any combination of plug-in cards. All cards can be commanded and operated using TILE! software.
- Scalable
 - The EM Center can be scaled using a wide array of available plug-in cards including:
 - EM Sense™ LASER powered E-Field Sensors
 - EM Field™ Integrated EMC Immunity Test Solution
 - EM Power™ RF power meters for EMC application
 - EM Gen™ RF signal generators
 - EM Switch™ for switching one, two, four or six RF signal

8-Slot Example Application

The international standard ISO11451-5 vehicle test methods for electrical disturbances from narrowband radiated electromagnetic energy – part 5: reverberation chamber describes the measurement of E-fields at eight reference points as part of the immunity test in a reverb chamber.

For this application, the EM Center EM8 can be configured with eight EM Sense laser powered E-field probes, allowing the fast and accurate measurement of the isotropic field strength within the working volume of the chamber. Utilizing multiple switches, the EM Center EM8 allows for simultaneous communication, increasing the rate of switch state changes and reducing test lag time.



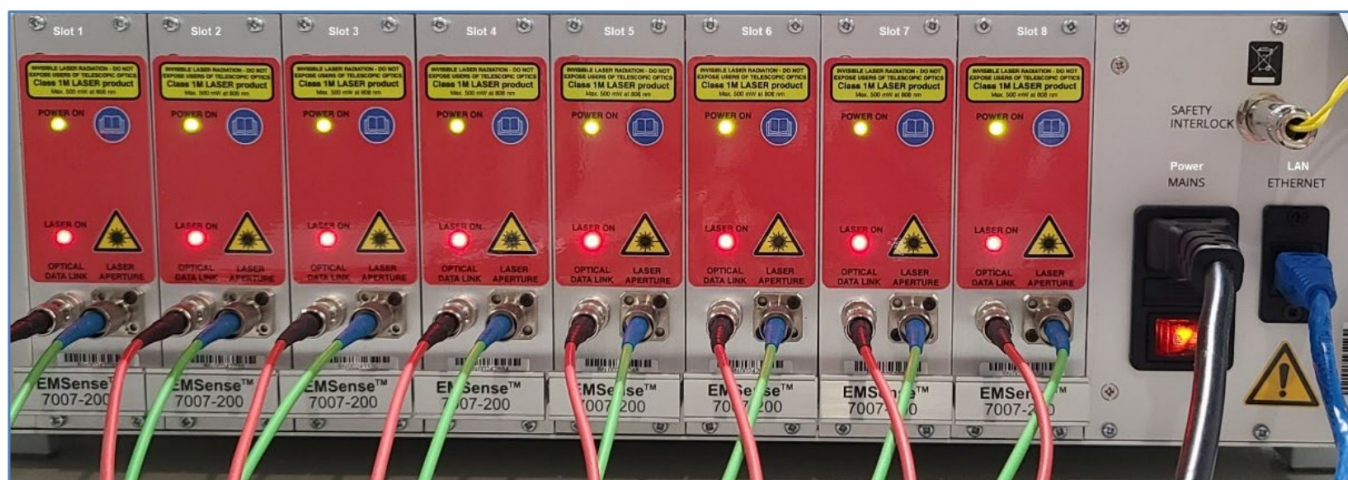


Figure 2: EM8 Back

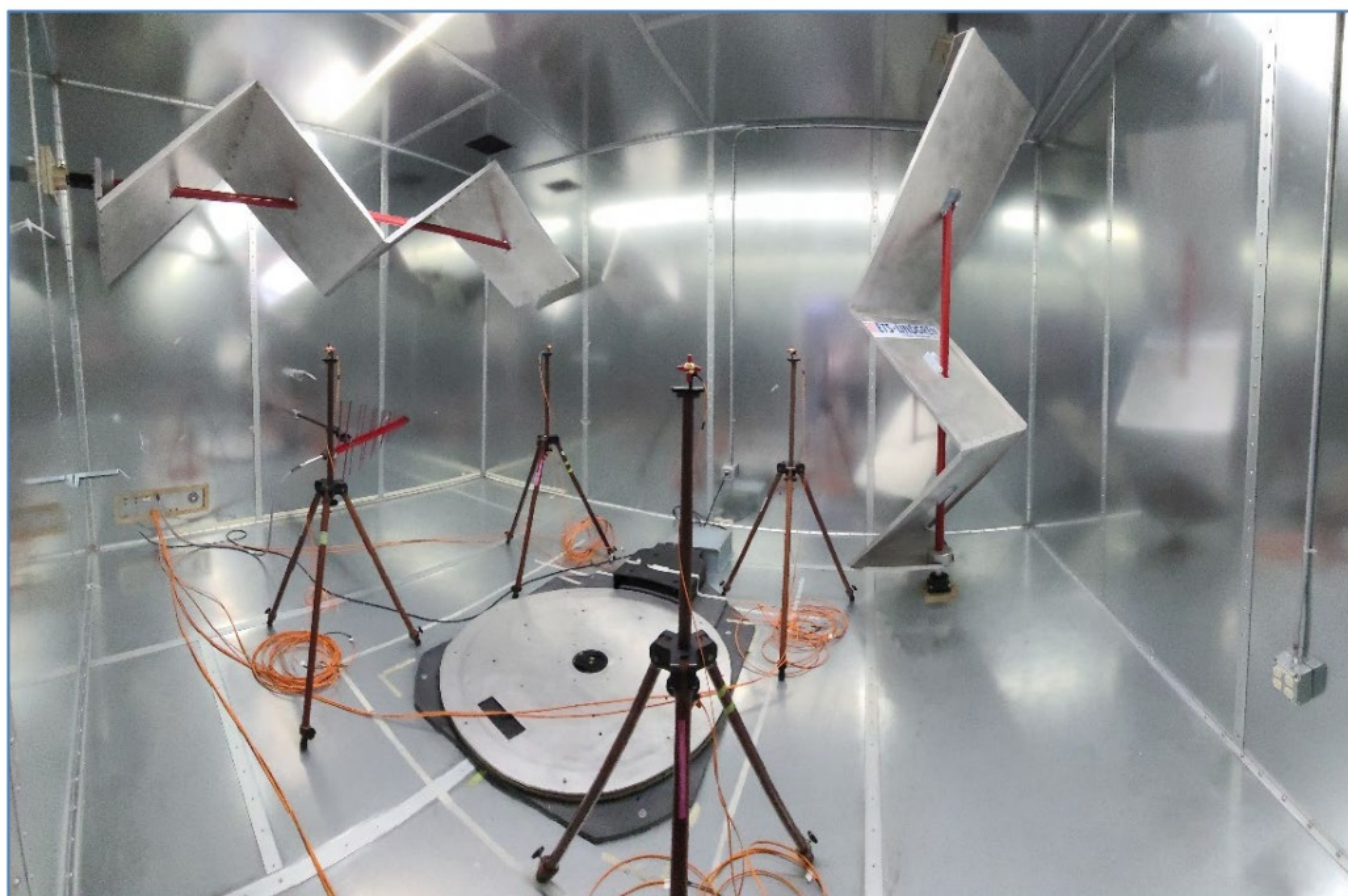


Figure 3: Probes inside the chamber connected to the EM8

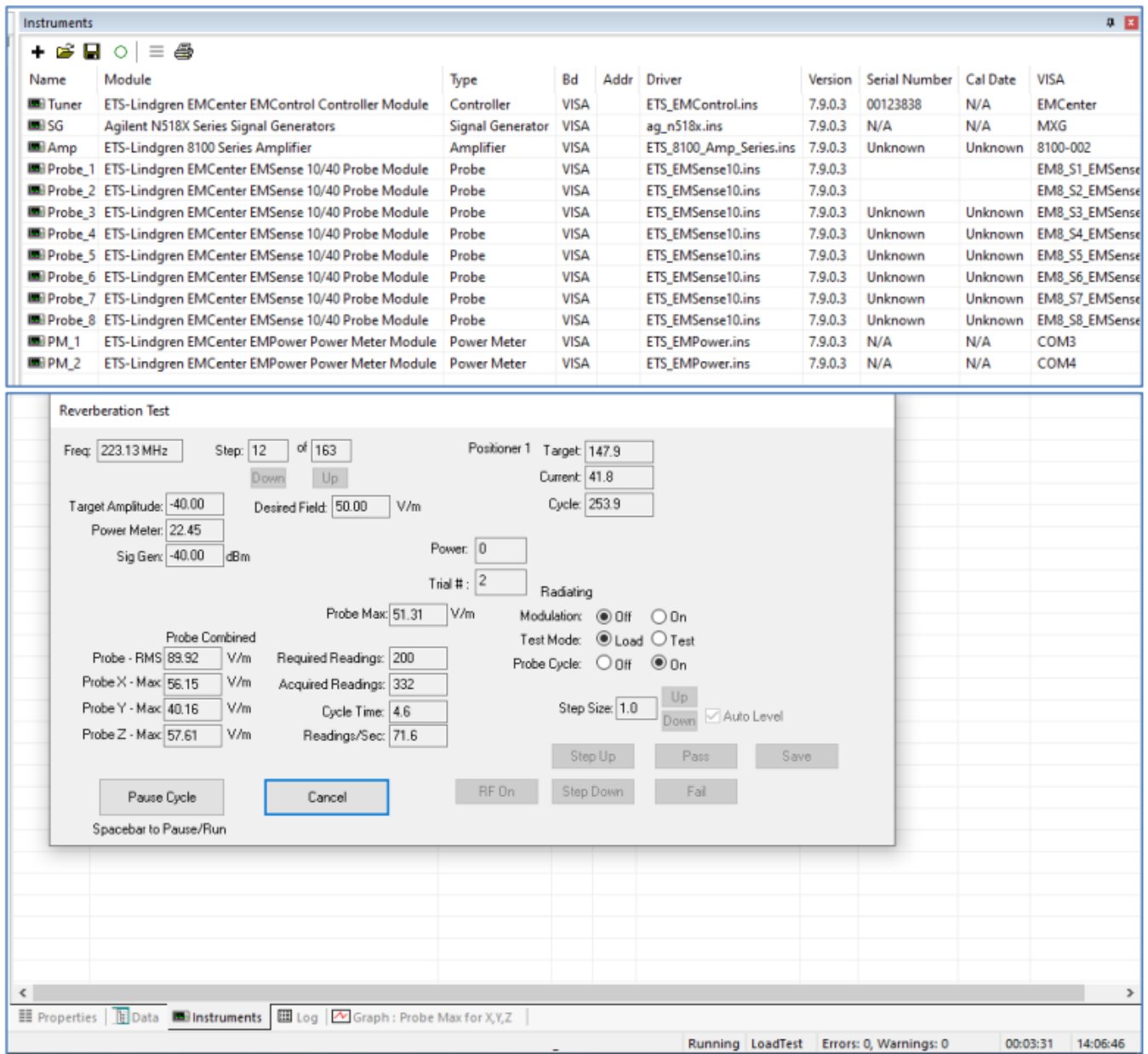


Figure 4: ISO11451-5 vehicle test of EM8 in TILE!

Operation

Installation

CAUTION: Before connecting any components, follow the safety information in the ETS-Lindgren Product Information Bulletin included with your shipment.

WARNING: Always unplug the unit before starting maintenance to prevent electrical shock. Maintenance includes removal of the plug-in cards or the top panel.

CAUTION: Leave an empty slot or space 1U in height beneath the EM Center to allow sufficient cooling through the bottom air inlets of the cabinet.

Changing Plug-In Cards



1. Before installing and inserting a new plug-in card make sure that the EM Center is turned OFF and disconnect the AC Mains power cord.
2. Determine in which empty slot of the EM Center you want to install the Plug-in Card. Looking at the back of the EM Center, the slots are numbered 1 through 8 from left to right.
3. Remove the blank panel from the slot by removing the two screws at the top of the blank panel and the two screws at the bottom. Be careful not to lose the screws.
4. Carefully insert the card into the slot of the EM Center. Position the plug-in card into the slot and slowly push it, using the lower part of the plug-in card. When it reached the end of the rail, gently push and lock the plug-in card into the backplane socket.
5. Secure the card by tightening the four previous screws using a Pozi type screwdriver head PZ1.
6. Plug the interlock into the connector on the back of the EM Center.
7. Connect the desired device(s) to the correct plug-in card.
8. Connect the EM Center to a computer using Ethernet.
9. Re-connect the AC mains power cord and turn ON the EM Center. It can now be started by tapping the touch screen. The EMC enter will automatically detect the newly installed card.
10. The card installation is complete and the EM Center is now ready for use. You can control the cards by sending remote commands.

Interface and Cable Setup



CAUTION: Never disconnect the fiber optic cables when one of the lasers is active.



CAUTION: Before placing into operation, follow the information provided in Safety Information on page v.



CAUTION: Prior to operation, verify that the mains voltage is within the operating range of the equipment.

Front Panel



Power Button

How long you press the power button determines which function is used:

- ON/OFF (1 sec)
 - To power ON the EM8, press and hold the power button for one second until the LED ring around the button lights up in white. After a brief moment, the LED ring will begin flashing, indicating the booting process. Once the LED stops flashing and continues to burn steadily, the EM8 is now ready for use.
 - To power OFF the EM8, press and hold the power button one second until an audible beep is heard. After a brief pause, the LED ring will initiate flashing, signaling the shutdown process. Once the LED ceases flashing and turns off, the EM8 is fully powered down.
- Reset IP addresses to default (10 secs)
 - While the EM8 is in normal operation, hold the power button for about 10 seconds. Release the button within two seconds after the two short audible beeps to initiate the reset of the IP addresses to their default values.
 - **NOTE:** It is important not to continuously press the button, as doing so will prevent the IP address reset.
- Full Factory reset
 - In the event of lost credentials or the need for reconfiguration of the EM8, a reset to default settings is possible. Factory Reset includes default IP addresses, default software version, default password.
 - To perform a factory reset, follow these steps:
 1. Begin by shutting down the EM8.
 2. Turn off the mains power, wait for 20 seconds, and then turn the power back on.
 3. Hold the power button for approximately 30 seconds. Release the button immediately after hearing two short audible beeps.
 4. It's crucial not to keep pressing the button, as this will prevent the factory reset. Releasing the button within two seconds after the two beeps will execute the factory reset.

LASER Button

When the EM8 is equipped with plugin cards, including one or multiple plugin cards containing lasers, the LASER ON button takes on a critical role. Its primary function is to activate the lasers safely simultaneously on all installed plugin cards.

To maintain safety standards, initiating the laser power in the plugin cards follows a twostep process: entering a designated 'laser code' and manually activating the lasers.

- To activate the laser(s) in the EM8, follow these steps:
 1. Press the 'Laser ON' button on the front of the EM8 and hold it.
 2. Five loud 'beep' sounds should be heard.
 3. On the fifth 'beep,' the laser source is activated, and the red LED ring around the button lights up.
 4. Release the 'Laser ON' button.
- This means that:
 - If the activation process is to be interrupted, release the 'Start' button (before the fifth 'beep'). The laser will not be activated.
 - If the activation process is interrupted (and released 'Start' button by accident), the laser will not be activated.
 - The user is warned by an audible warning when the start button is pressed by accident (i.e., without the intention to activate the laser).
- To deactivate the lasers, press the laser-on button once, and all lasers will be powered off.
- **NOTE:** If an error occurs with one of the laser plugin cards, an audible beep will notify you. To resolve this error, simply press the laser on button briefly. This action will clear the error, and the plugin card will stop beeping.

Back Panel



Mains

Plug the power supply cable into the mains inlet of the EM8, power the system by toggling the mains switch located beneath the mains inlet.

Ethernet

There is no display, so everything is controlled exclusively via the Ethernet connection. Therefore, an Ethernet cable must be connected to the rear of the EM8 and your network for proper functionality.

- The box itself a LAN address to change the system settings.
- Each slot can have its own LAN address and therefore be regarded as its own instrument.

Interlock Plug



The EM8 uses a hardware interlock plug (6,3mm 1/4" stereo jack) which can be used as a safety interlock. The hardware interlock plug provides two floating contacts which require connection for certain plugin cards to operate. By default, the supplied interlock plug is shorted and must be inserted into the interlock input at the back side of the EM8. When a safety interlock is required in your system, please cut the RED wire, and connect the open ends to your interlock system.

Network configuration

The EM8 is factory configured with standard static Ethernet addresses:

Slot number	IP Address	Port number
EM8 system	192.168.1.200	80
Slot 1	192.168.1.201	27531
Slot 2	192.168.1.202	27531
Slot 3C	192.168.1.203	27531
Slot 4	192.168.1.204	27531
Slot 5	192.168.1.205	27531
Slot 6	192.168.1.206	27531
Slot 7	192.168.1.207	27531
Slot 8	192.168.1.208	27531
Subnet address	255.255.255.0	–

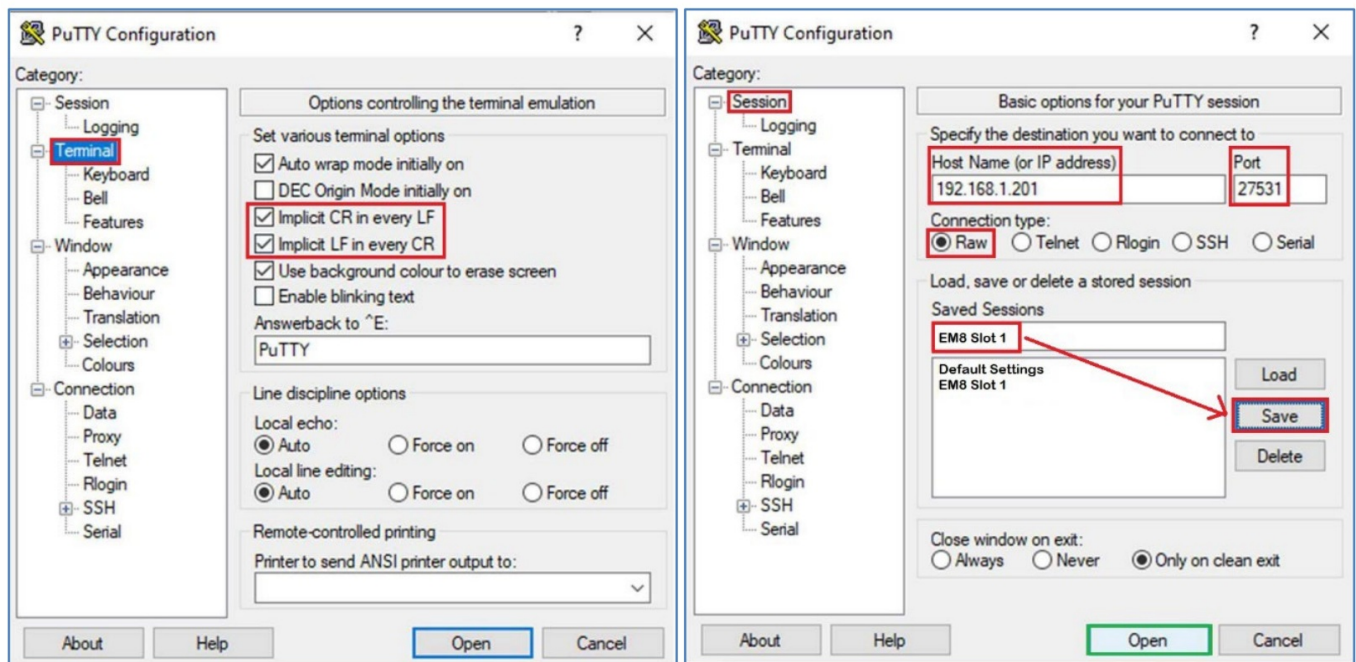
Remote Control



To use the EM Center remote commands, read the [manual document](#) 399342 EM Center for examples and a full command list.

EXAMPLE: Connect Via Pu TTY

If you want to establish a raw connection without specifying a particular protocol in Pu TTY, you can follow these steps:



1. Open Pu TTY.
2. On the left menu select "Terminal":
 - a. Enable "Implicit CR in every LF" and "Implicit LF in every CR" to automatically send a Carriage Return after every Line Feed and vice versa.
3. On the left menu select "Session":
 - a. Enter the IP address "192.168.1.201" in the "Host Name (or IP address)" field.
 - b. In the "Port" field, enter "27531" as the port number for the default configuration.
 - c. Under "Connection type," choose the "Raw" option.
 - d. Under "Saved Sessions," enter a name for your session in the "Saved Sessions" field (e.g., "EM8 Slot 1").
 - e. Click the "Save" button to save your configuration.
 - f. Click the "Open" button to start the raw connection.

The provided configuration enables a raw connection without specifying a particular protocol, facilitating direct interaction with the plugin card in an unprocessed manner. This setup allows for the transmission of commands and reception of responses from the plugin card.

Specifically, each plug-in card supports the command "*IDN?" for retrieving its identification information. When the configuration and connection are correct, issuing this command to the plug-in card will prompt it to return the identifier string (ID) associated with the plug-in card.

Specifications

Physical Specifications

Height:	132 mm (5.2 in)(3U)
Width:	19 in rack mountable
Depth:	312 mm (12.3 in) excluding rear panel
Weight:	~15.4 lbs. (7kg) empty

Environmental Specifications

Temperature Range:	0°C to 40°C (32°F to 104°F)
Relative Humidity:	5% to 95% (non-condensing)

Power Specifications

Supply Voltage:	115/230 VAC
Power Consumption:	<ul style="list-style-type: none">• Standby: < 3 W• Empty: 33 W• Max load: 225 W

Interface and Cable Specifications

Backplane	<ul style="list-style-type: none">• Ethernet• 6.35mm (1/4") jack• Fused and switched IEC 320 C13 socket• 8 blanking plates (replace with plug in cards)
Cables:	IEC power cord
Interfaces:	LAN
Interlock:	6.35 mm jack plug connection to safety disables interlock & interlocked laser outputs when triggered
Mounting:	Desktop or 19-in rack mountable
Slots:	8 modular card slots

Appendix A: EC Declaration on Conformity


ETS-Lindgren Inc. declares these products to be in conformity with the following standards and provisions:

Product Model:	EM Center Modular RF Platform
Directives:	EMC Directive 2014/30/EU Low Voltage Directive 2014/35/EU RoHS Directive: 2015/863/EU
Emission:	EN 61326-1:2013, Class A1 Electrical equipment for measurement, control and laboratory use.
Immunity:	EN 61326-1:2013, Industrial level, performance criteria A Electrical equipment for measurement, control and laboratory use.
Safety:	EN 61010-1:2010, Safety requirements for electrical equipment for measurement, control, and laboratory use.
RoHs:	EN 63000:2018, Technical documentation for the assessment of electrical and electronic products with respect to the restriction of hazardous substances.

Technical Construction Files are available upon request.



Documents / Resources

	<p>ETS-LINDGREN EM8 Modular Test System [pdf] Instruction Manual EM8, EM8 Modular Test System, Modular Test System, Test System, System</p>
---	---

References

- [User Manual](#)

[Manuals+](#), [Privacy Policy](#)

This website is an independent publication and is neither affiliated with nor endorsed by any of the trademark owners. The "Bluetooth®" word mark and logos are registered trademarks owned by Bluetooth SIG, Inc. The "Wi-Fi®" word mark and logos are registered trademarks owned by the Wi-Fi Alliance. Any use of these marks on this website does not imply any affiliation with or endorsement.