



# Etour BL-2021 USB Mini USB Computer Microphone User Guide

[Home](#) » [Etour](#) » Etour BL-2021 USB Mini USB Computer Microphone User Guide 

# Etour



BL-2021 USB



## Contents

- [1 BL-2021 USB](#)
- [2 BL-2021USB Technical specifications](#)
- [3 Preliminary setup with Windows 10](#)
- [4 Documents / Resources](#)
  - [4.1 References](#)
- [5 Related Posts](#)

## BL-2021 USB

- Both Apple Mac and Microsoft Windows systems are supported.
- Flexible gooseneck design makes it easy to adjust the direction of the microphone radio.
- Uses USB bus power system, no need to use battery power.
- Easy to connect, just plug into your computer's USB port and you're ready to go.

### System Requirements :

- A computer with a USB 2.0 or higher port,
- CPU : Intel Core2 2.2 GHz or higher Intel or AMD processor,
- Memory : 2GB or more (32-bit OS), 4GB or more (64-bit OS)

### Compatible Operating Systems :

- A computer with a USB 2.0 or higher port,
- This product may not be compatible with some computers.



## BL-2021USB Technical specifications

Components	Duplex Capacitive Type
Directivity	Unidirectional
Frequency Response	40~16,000 Hz
Sensitivity	-35.5 dB (at 1V at 1 Pa)
Power Supply	USB Port, DC 5V / 100mA
Size	Length 142 mm x Diameter 65 mm Stand
Weight	Approx. 60 g (without cable)
Conductors	1.8 m

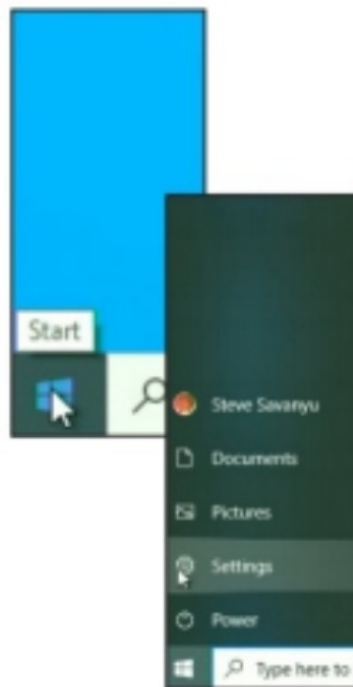
## Preliminary setup with Windows 10

If you are using an older version of Windows, your computer will automatically recognize the USB device and install the appropriate driver.

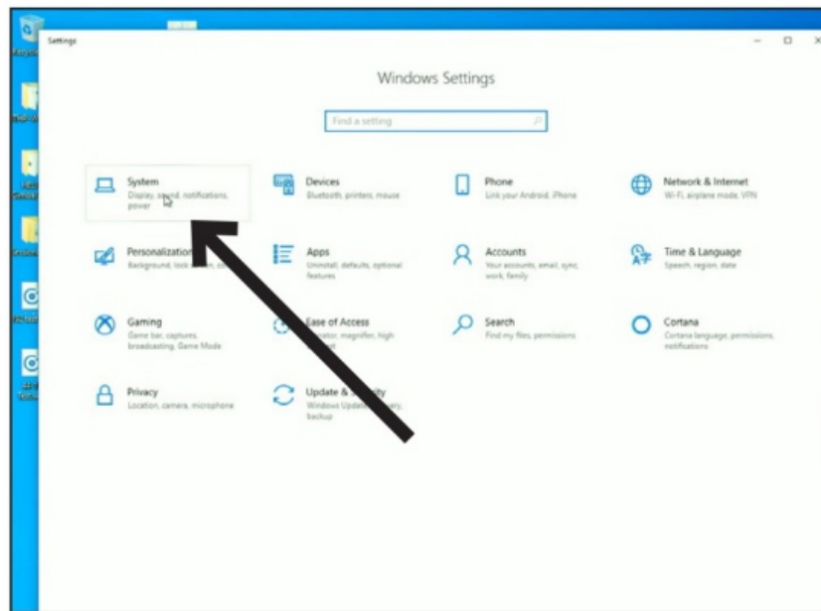
The first time you plug the microphone in, you may see a message that new hardware has been found, or you may see a driver software installed notice. After the first time, you will not see any of these as the computer has already installed the necessary drivers for a USB microphone.

When the BL-2021USB microphone is connected, Windows 10 will automatically select it as the input device.

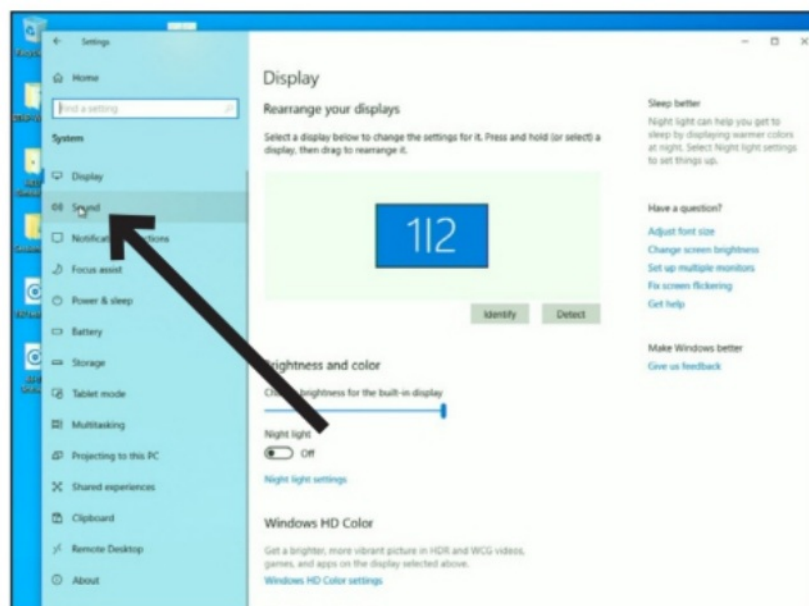
1. To verify or make changes click the Start window and click settings (the gear).



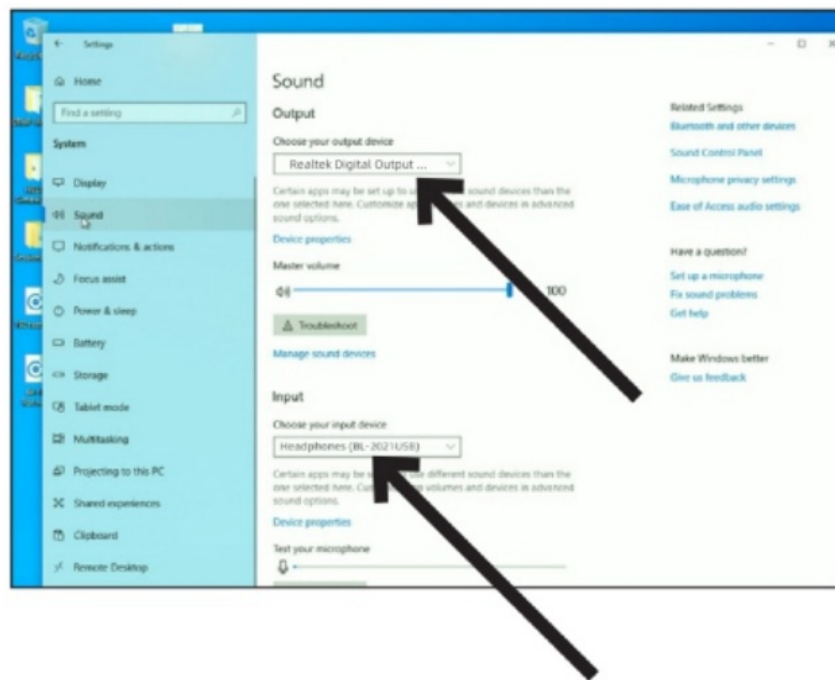
2. When the settings window opens, Click "System."



3. When the System window opens, in the left column, click “Sound.”



4. The Sound tab opens showing the active input device which should be the USB microphone.  
To use the computer speakers as your output device, click “Choose your output device” and in the drop-down menu choose the desired item.

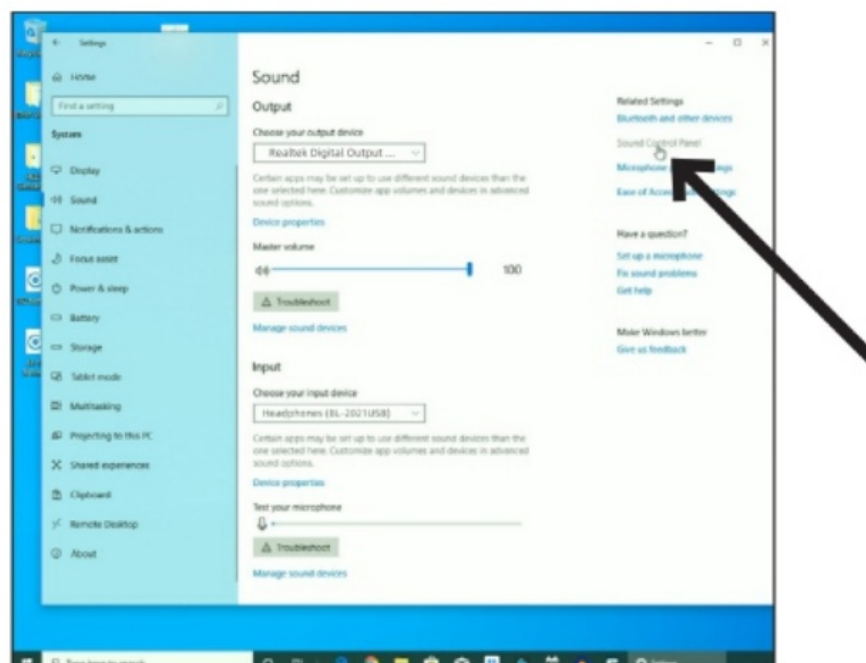


At this point, your computer is set up to use the BL-2021USB microphone as the audio input device and whatever you chose as the audio output device. However, in the recent versions of Windows 10, Microsoft has instituted some additional privacy settings, allowing users to control which apps and programs have access to the microphone. Refer to the section on privacy for more information.

There are additional settings available for the microphone, allowing you to set the input level, change the sampling rate and manage other aspects of the audio. Refer to the next section for more details.

At this point Windows 10 is set up to use the BL-2021USB microphone as the input device. The sample rate is set for the Windows default (44.1 KHz CD Quality). However, additional settings are available, including input level and sampling rate.

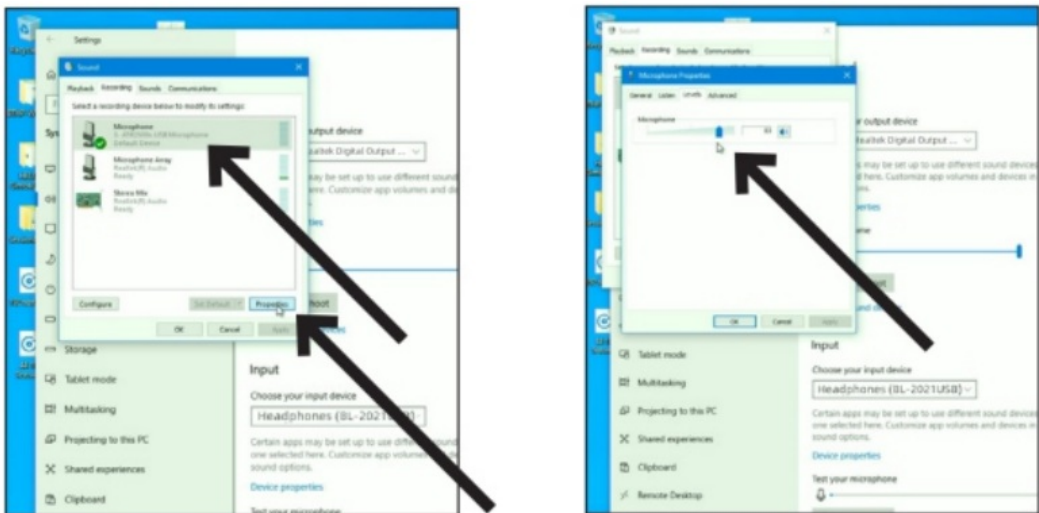
1. To access these settings, click “Sound Control Panel.”



2. When the Sound Control Panel opens, select the “Recording” tab and select the BL-2021USB microphone.
3. Click “Properties.”
4. Click the Levels tab and move the slider to the right or left to set the input gain for the microphone. Setting it too low will not provide enough signal to your recording application. Setting it too high can cause the recording

application to distort.

Note that this level setting is different from the volume control slider on the main sound settings window.



Etour

Documents / Resources

	<p><a href="#">Etour BL-2021 USB Mini USB Computer Microphone</a> [pdf] User Guide</p> <p>BL-2021 USB Mini USB Computer Microphone, BL-2021, USB Mini USB Computer Microphone, USB Computer Microphone, Computer Microphone, Microphone</p>
---	---

References

- [User Manual](#)