



ETOE A1191 WiFi Bluetooth Projector User Manual

[Home](#) » [ETOE](#) » ETOE A1191 WiFi Bluetooth Projector User Manual 

Contents

- [1 ETOE A1191 WiFi Bluetooth Projector](#)
- [2 Safety Instructions](#)
- [3 Overview](#)
- [4 Remote](#)
- [5 Get started](#)
- [6 Settings](#)
- [7 Using the ETOE projector A1191](#)
- [8 Specifications](#)
- [9 Warranty](#)
- [10 Documents / Resources](#)
- [11 Related Posts](#)

ETOE

ETOE A1191 WiFi Bluetooth Projector



Safety Instructions

Read and understand all instructions before you use this device. Do not make any changes or settings that are not described in this manual. Any physical injury, and loss of data or damage caused by failure of following instructions, is not included in the warranty.

Setup

To reduce the risk of fire and/or electric shock, do not expose the device to rain or moisture, and objects filled with liquids, such as vases, should not be placed on the device. Do not place the device on soft surfaces such as tablecloths or carpets as doing so could be a fire hazard. Do not place the device in areas susceptible to excessive dust and dirt or near any appliance generating a strong magnetic field. To prevent overheating, do not block or clog the ventilation openings. Never place the device in a confined space. Always leave enough space around the device for ventilation. Protect the device against direct sunlight, heat, large temperature fluctuations and moisture. When the device runs for a long period of time and the surface becomes hot shut it down and unplug the power cord. Resume operation only after the device has cooled. Always handle the device with care. Avoid touching the lens. Never place heavy or sharp objects on the device or the power cord. To avoid electric shock, do not disassemble. Only use attachments or accessories specified by the manufacturer. Avoid extreme vibration. It may damage the internal components. Do not allow children to handle the device without supervision. Under the following conditions, a layer of moisture can appear inside the device which can lead to malfunctions: if the device is moved from a cold to a warm area; after a cold room is heated; when the device is placed in a damp room. To avoid any moisture, seal the device in a plastic bag before moving it to another room, and wait for one to two hours before you take it out of the bag.

Power Supply

Use only the provided power adapter. Power off the device before removing the power supply from the socket. Protect the power cord from being walked on or pinched, particularly at plugs, convenience receptacles, and the point where they exit from this device. Unplug the device if there are lightning storms or when unused for a long period of time. Where the power plug or an appliance coupler is used as the disconnect device, the disconnect device shall remain readily operable. Before you make or change any connections, ensure that all devices are disconnected from the power outlet. Never touch the power cable or the power connector with wet hands.

Hearing Safety

To avoid hearing damage, do not listen for extended periods at high volume. Set the volume at a safe level.

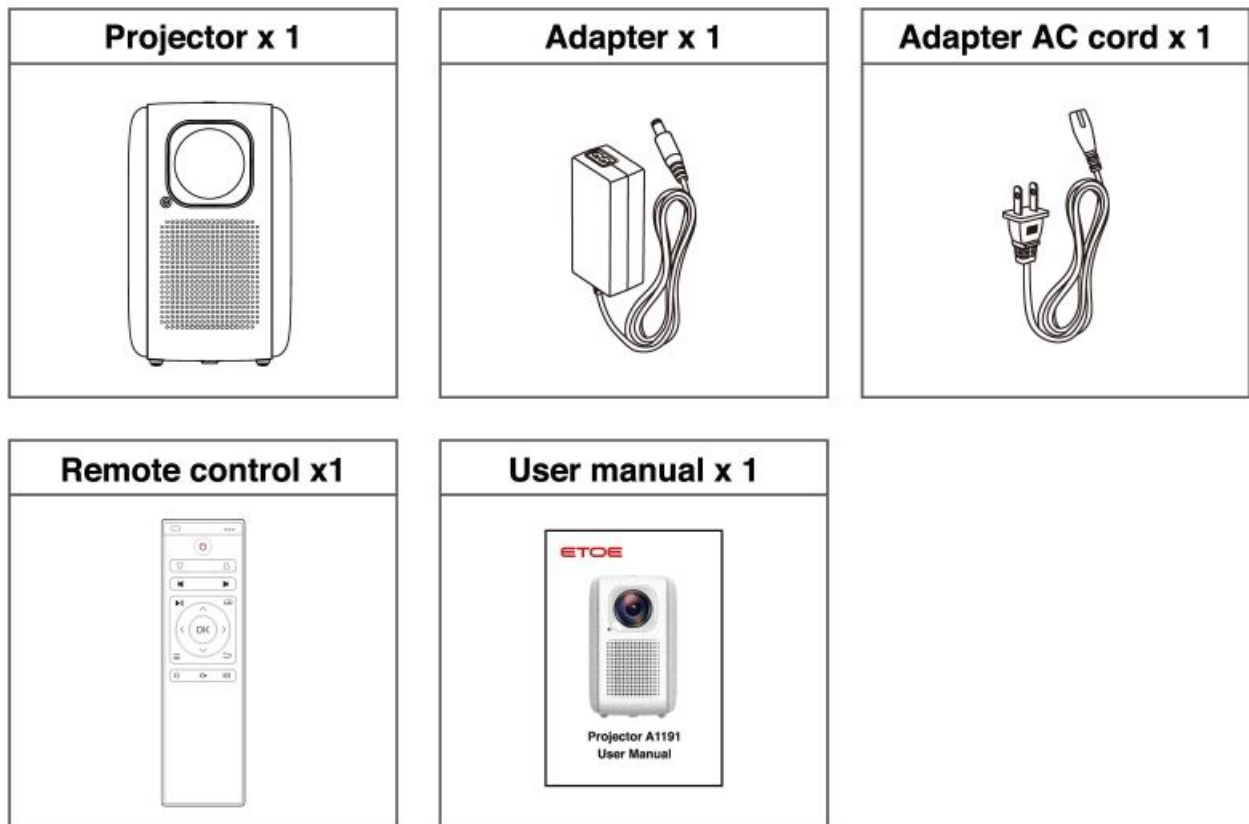
Cleaning

Power off the device and remove it from the power supply before cleaning the surface. Use a soft, lint-free cloth. Never use liquid, gaseous, or easily flammable cleansers (like sprays, abrasives, polishes, and alcohol). Do not use any liquid cleaning agents to clean the lens as they may damage the protective coating on the lens. Wipe over the surfaces gently. Be careful that you do not scratch the surfaces. Use lens cleaning paper to clean the lens of the projector.

Repairs

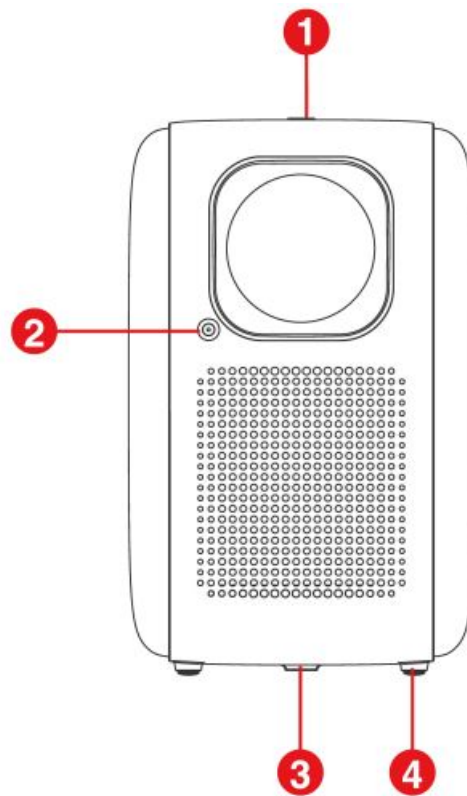
Do not make any repairs to the device by yourself. Only have your device repaired by an authorized service center. Improper maintenance can result in injuries or damage to the device. Refer all servicing to qualified service personnel. Caution: Possibly hazardous optical radiation is emitted from this device. Do not stare at the operating beam. The bright light may hurt your eyes.

What's included



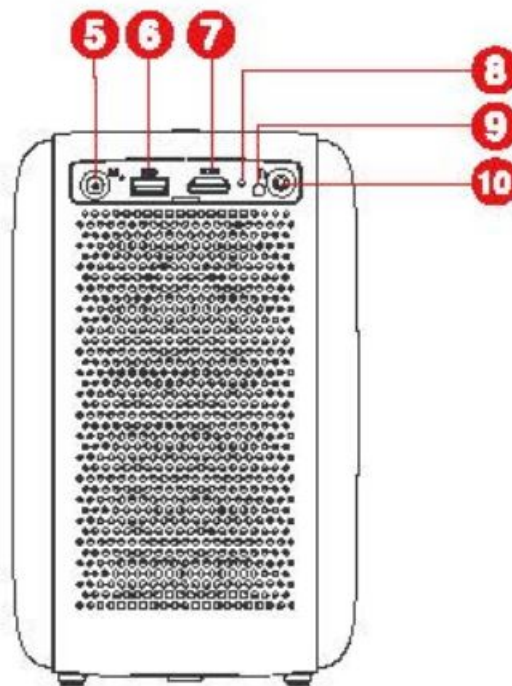
Overview

Projector



Projector Front View

1. On/Off button
2. IR Receiver
3. Tripod Screw Hole
4. Pads

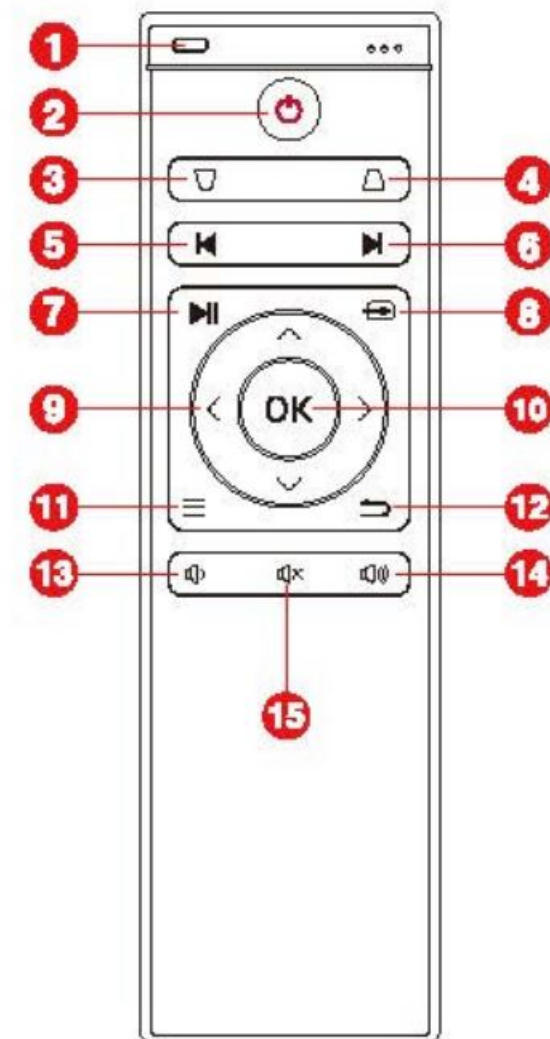


Projector Back View

5. 19V DC Input
6. USB2.0
7. HDMI14
8. Led Indicator

- 9. IR Receiver
- 10. 3.5mm AUX Port

Remote



- 1. Indicator
- 2. On/O
- 3. Keystone+
- 4. Keystone
- 5. Focus t
- 6. Focus
- 7. Next
- 8. Input Signal Resource
- 9. 4 Navigation Buttons
- 10. OK
- 11. Menu
- 12. Return
- 13. Volume+
- 14. Volume
- 15. Mute

Get started

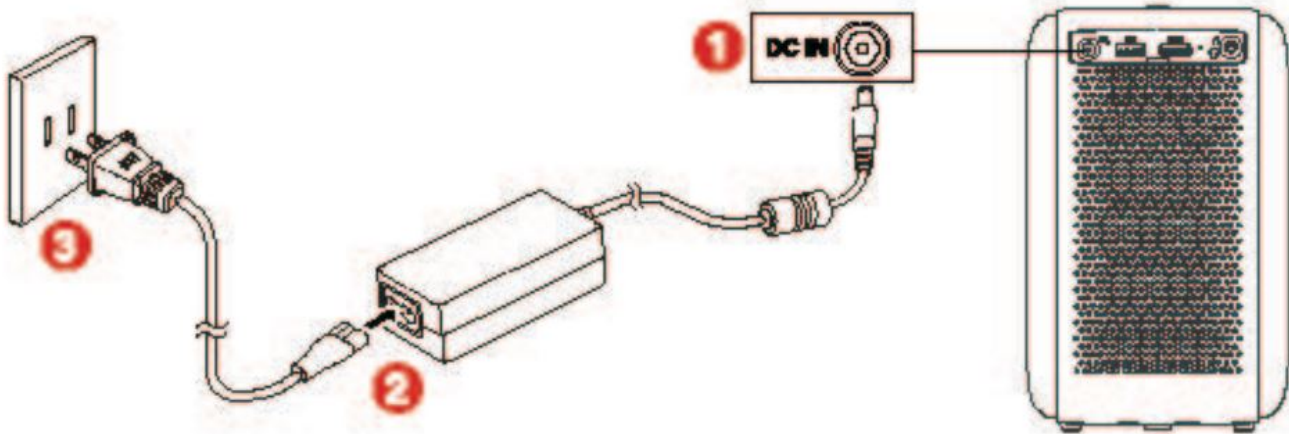
Placement

Place ETOE Projector A1191 on a stable, flat foundation in front of the protective surface. For the best results, the projection surface should be white and flat. It is unnecessary to tilt the projector towards the projection surface. You can correct the projection image with the built-in keystone correction and with remote control. The distance between the projector and the projection surface determines the image size.

Prepare the Remote Control

Prepare a 2xAAA battery, which is not included in the box. To replace the battery, slide off the battery back cover to open the battery compartment, insert new batteries (matching the polarity (+/-) indicated), and close the battery compartment.

power on



1. AutomaticConnect the Included adapter to the DC-in port of the projector.
2. Connect the AC cord to the adapter.
3. Plug the adapter to the outlet and the LED Indicators will Right on.
4. Press the On/Of button, Wait the projector to turn on.

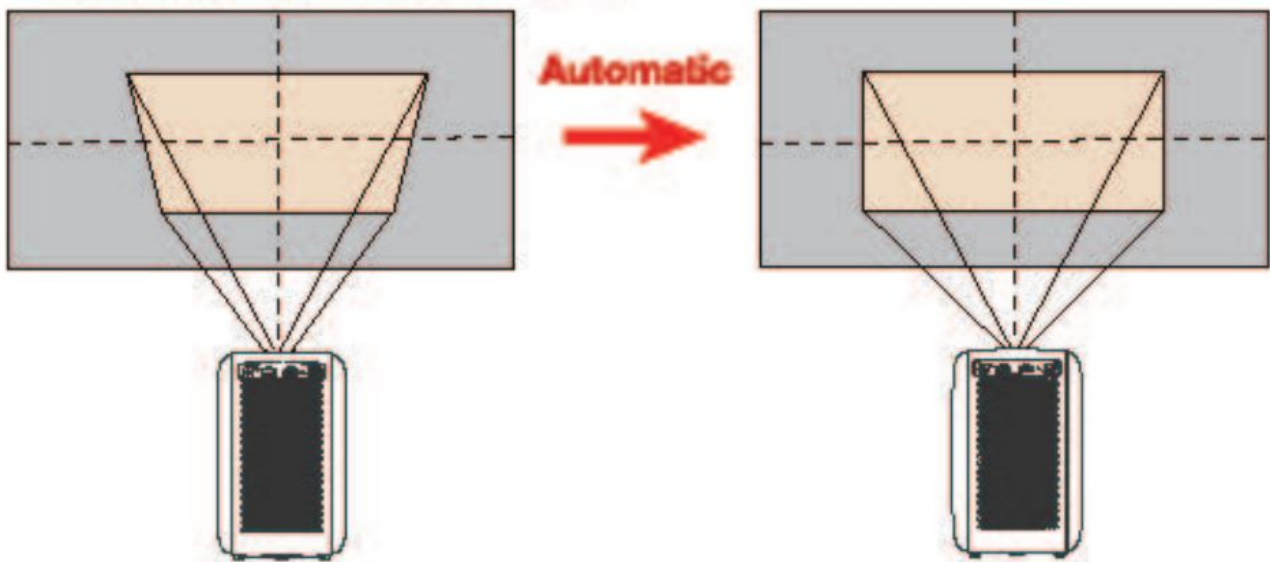
Focus

1. Place the projector towards a suitable projection surface or wall, adjust the distance for proper size of picture.
2. Use the Remote control [Focus+] or [Focus-] until the picture is perfectly clear. Note: The screen size must be between 40" to 200."

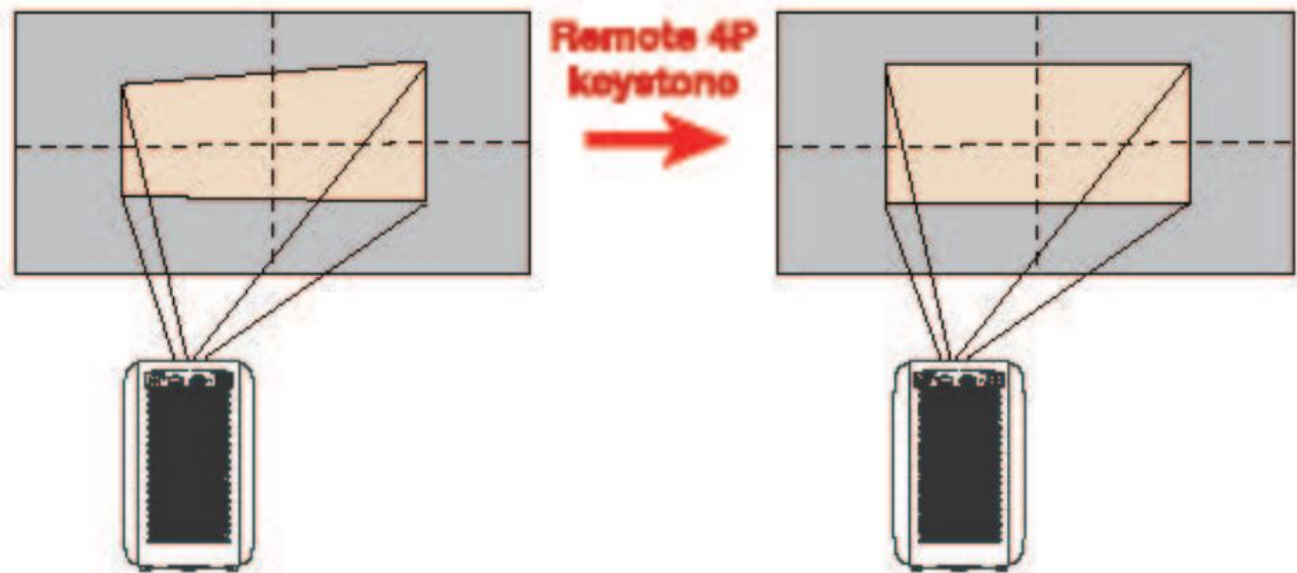
Keystone correction

ETOE projector A1191 supports automatic vertical keystone correction and remote four-point keystone correction.

1. Place the projector towards a suitable projection surface or wall, and adjust the distance for proper size of the picture.
2. Focus the picture perfectly clear.
3. If your projector is directly toward the projection surface, but pointing up and down, the picture will be adjusted automatically. You can still use remote control [keystone+] or [keystone-], or go to Projection Setting>Four point correction] for further minor adjustment, till the picture is perfectly rectangular,



4. If your projector is not vertical to the projection surface, use remote control, go to Projection Setting-Four point correction].



5. Press [OK] to select the point, 4[Navigation button] to adjust, until the picture is perfect rectangular

Settings

Go through the set-up process when you turn on the projector for the first time.

Projection setting

Installation mode Desktop Front Projection: The device is located in front of the projection surface. Desktop Rear Projection: The device is located behind the projection surface. [Ceiling Front Projection: The developed is hanging from the ceiling in an upside-down position. The image is rotated by 180 degrees. Ceiling Rear Projection: The device is hanging from the ceiling in an upside-down position behind the projection surface. The image is rotated by 180 degrees and horizontally mirrored.

Zoom

Zoom in or out from 50%-100% to fit image size in certain screen. Vertical correction Vertical keystone correction from 0-100. Horizontal correction Horizontal keystone correction from 0-100. Four-point Correction Use the remote control, [OK] to select the point, 4 [Navigation button] to adjust, [Back] to exit.

Network

This projector can be connected to the Internet via a wireless(Wi-Fi) connection.

1. Go to the home page, select [Bettingel> [Nebwork eetting] and press.
2. Follow the on-screen instructions to complete the network connection.

Bluetooth

You can connect a Bluetooth headphone or speaker to ETOE Projector A1191.

1. On the home menu, select [Settinge]> Bluetooth] and press.
2. Follow the on-screen Instructions to complete the Bluetooth connection.

Other settings

Boot signal source HDM/[USB]/[o Select default display signal source from HDMI, USB, or turn to home page.No need switch signal source every time when the projector is turned on. Language setting Select your language from Engilsh). [Deutsch), [Ftaçals]. [tallano], Espafol, [EAEI, IEO. Restore factory setting Reset your device and restore the factory setting.

Using the ETOE projector A1191

Connect to an HDMI playback device

This projector supports connections with various HDMI playback devices such as PC, TV stick, TV box, DVD player, set-top box (STB), game console or other devicas.

1. Connect this projector to an HDMI playback device with an HDMI cable (not provided).
2. Press the signal source button on the remote, or click the Signal Source button at the homepage, select HDMI, and presa. Ft will automatically start the HDMI playback when connected to an HDMI playback device)

Connect to a USB storage device

With this projector, you can enjoy music, video, and pictures, that are stored on a USB storage device.

1. Plug-In the USB storage device.
2. Prees the signal source button on the remote, or click the Signal Source butt n at homepage, salect [USB], and pres.
3. Select the file you plan to play from the file and folder menu.
4. Press [oK] to start playing.

Connect to Bluetooth headphones or speaker

You can connect a Bluetooth headphone or speaker to ETOE Projector A1181.

1. On the home page select [Settings]> Bluetooth] and prese.
2. Follow the on-screen Instructions to complete the Bluetooth connection.

Connect to a headphone vie AUX cable

You can connect a headphone or speaker to ETOE Projector via AUX cable as well.

1. Plugin the 3.5mm AUX cable connector to the ETOE projector AUX port
2. Plug the other connector of the 3.5mm AUX cable to your headphone or speaker.
3. Play your media on projøctor.

Companion mode

1. At home page, use the remote control to select [Compenlon mode] and press [O to enter. Companion mode will be turned on and a random scene will be displayed.
2. To switch another scene, press the Menu] button the remote control, you will see all scenes at the bottom of the screen, I<]or[>]to sele, [OK to confirm and enter.
3. When your device ha8 been idle for 5 mins, twill tum to Companion mode automatically.

I08 AP Soreen mirroring

For iOS devices, Use the projector as Wi-FiAP hotspot and connect iPhone/ Pad / MacBook to projector Wi-Fi

1. Select iOS AP screen mirroring at the homepage
2. Follow the Instructions an the screen

Note: Mirroring via Netrbk playing may not support due to copyright limitations. **I08 WI-FIScreen mimoring**

For IOS device, connect the projector to the same WHFI with your iPhone iPad/MacBook.

1. Select iOS AP screen minoring at homepage
2. Follow instructions on the screen Note: Mirroring via Notilix playing may not supported due to copyright Limitation.

Android Screen mirroring

For Android devices, Use the projector as a Wi-Fi AP hotspot and connect phones and tablets to the projector WIFI

1. Select Android screen minoring at the homepage.
2. Follow instructions on the screen.

Specifications


1. Natve Resolution: 1920 1080
2. Bluetooth: Bluetooth 5.1
3. Brightness: 400 ANSI Lumene
4. Contrast Ration: 5000:1
5. Aspect Retro: 16:9/4:3 Adaptive
6. Speaker: 8w2 Stereo Speaker
7. Connection: HDMI1; USB*1; AUX*1;
8. wHFI: 2.4G/5G Dual-band
9. Projection else: 40-200
10. Zoom:50-100%
11. Keystone Correction: a46
12. Warranty: 24-Month Warranty

	-1...11
40	
ID	4.112
eo	IA1
10	I.II
eo	7.18
80	1.1
100	
110	11.14
1:IO	1UII

Warranty

30-Day Money-Back Guarantee for Any Reason You may return your undamaged product and packaging within 30 days of purchase to receive a FULL REFUND for any reason. If the reason for return Isn't quality-related, the customer must pay for the return shipping. 24-Month Warranty for Quality-Related issues ETOE Technology's products are warrantied to be free from material and workmanship defects for 24 months from the date of purchase. Within this period, ETOE will provide a replacement and cover any return shipping costs for products that fail in normal use. Please Note: Any provided shipping labels must be used within 20 days from the date they're issued by ETOE Technology Customer Support.

Documents / Resources

 <p>ETOE Projector A1191 User Manual</p>	<p>ETOE A1191 WiFi Bluetooth Projector [pdf] User Manual A1191, 2A4DV-A1191, 2A4DVA1191, A1191 WiFi Bluetooth Projector, WiFi Bluetooth Projector</p>
---	---