



## ETA Nutcracker User Guide

[Home](#) » [ETA](#) » ETA Nutcracker User Guide 

### Contents

- [1 ETA Nutcracker](#)
- [2 SAFETY NOTICE](#)
- [3 DESCRIPTION OF THE EXTRA ATTACHMENT](#)
- [4 PREPARATION AND USE](#)
- [5 MAINTENANCE](#)
- [6 TECHNICAL DATA](#)
- [7 Documents / Resources](#)
  - [7.1 References](#)
- [8 Related Posts](#)



**ETA Nutcracker**



Dear customer, thank you for purchasing our product. Please read the operating instructions carefully before putting the appliance into operation and keep these instructions including the warranty, the receipt and, if possible, the box with the internal packing.

## SAFETY NOTICE

- Consider the instructions in the user's manual as a part of the appliance and provide it to other users of the
- Never use the extra attachment if it is not working properly, if it fell to the ground and got damaged. In such cases take the extra attachment to a specialized service to check its safety and proper function.
- This extra attachment must not be used by children. Keep the device out of reach of children. The device may be used by persons with reduced physical or mental abilities or lack of experience and knowledge only if they are under supervision or they have been instructed about using the extra attachment safely and understand the potential dangers. Children must not play with the
- Always unplug the extra attachment from power supply if you leave it unattended and before assembly, disassembly or
- Before replacing accessories or accessible parts, which move during operation, before assembly and disassembly, before cleaning or maintenance, turn off the appliance and disconnect it from the mains by pulling the power cord from the power socket!
- If leaving the extra attachment unsupervised, always switch off and disconnect the drive unit from the
- During the use, part of the processed food may fly out of the inlet. For this reason, use eye protection (e.g. goggles, face shield).
- The extra attachment is intended for use in households only and for similar use! It is not intended for

commercial use and for use in facilities such as kitchenettes for staff in shops, offices or farms, or in other work environments. The accessories are not intended for use by clients in hotels, motels, B&B facilities and other accommodation facilities.

- Before preparation, remove possible packages from food (e.g. **paper, a PE bag**, ).
- Do not leave the appliance in operation without supervision and supervise it for the entire time that food is being prepared!
- It is not allowed to modify the surface of the appliance in any way (e.g. **using a selfadhesive wallpaper, foils**, )!
- Use the appliance only with accessories designed for this model. The use of other accessories may present a danger for the
- Do not insert accessories into any body
- Never insert your fingers into the filling opening and do not use a fork, knife, spatula, spoon, etc. Use only the supplied pusher for this
- Do not exceed the maximum continuous operating time of the appliance,
- Due to safety it is not possible to change the attachments while the drive unit is in
- Before removing the extra attachment from the drive unit, allow the rotating parts to stop completely.
- When assembling the extra attachment, follow the instructions for use carefully. In order to ensure proper functioning, any other way of assembling the extra attachment is not permissible!
- Do not use the attachment if you are tired or if you cannot concentrate or after consuming alcohol, narcotics or
- Long hair, loose clothes or accessories and jewellery can get caught by the rotating parts of the extra attachment. Make sure that your hair, clothes and accessories do not get into dangerous vicinity to the rotating parts!
- Only use the appliance with original accessories from the
- Use this appliance only for the purpose for which it was designed as specified in this user's manual. Never use the appliance for any other
- In order to ensure safety and proper function of the appliance, use only original spare parts and accessories approved by the
- **WARNING:** There is a risk of injury in case of incorrect use (not in accordance with the manual) of the

All text in other languages and pictures shown on the packaging, or the product itself, are translated and explained at the end of this language mutation

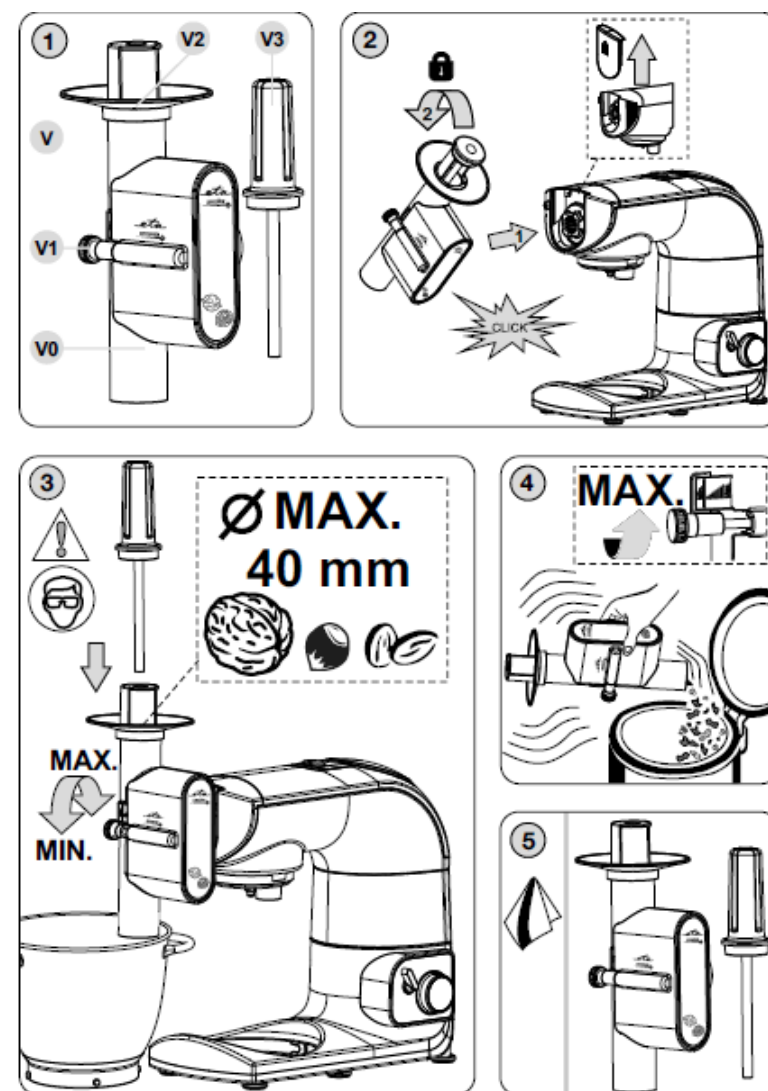
## **Attention**

Read and follow the safety instructions in the manual to the food process

## **DESCRIPTION OF THE EXTRA ATTACHMENT**

**V – Nutcracker** (pic. 1)

- V0 – extension body
- V1 – control disc
- V2 – cover with funnel
- V3 – pusher



## PREPARATION AND USE

Remove all packaging materials, take out the all accessories. Remove all adhesive foils, stickers or paper from the accessories.

### Assembly (pic. 2)

Slide the assembled nutcracker (mill with a cogwheel) into the front outlet of the power unit at an angle of approx. 45°. By turning it counterclockwise, secure it in the vertical position (you will hear a click). To remove the assembled nutcracker, press the release button on the power unit, turn the nutcracker clockwise as far as it goes and then slide it out of the power unit outlet.

### Attention

- Never use your fingers to push nuts. Always move food using the pusher **V3** only, move it slowly and to not push to a processor too
- **Never process food with a diameter of more than 40 mm!**
- **We do not recommend processing pistachios, pecans, peanuts, edible**
- If during the processing of a larger number of nuts it will be necessary to adjust the machine to a smaller size of nuts, it must be cleaned first. Switch the processor off, remove the accessory and shake out any remaining kernels and shells (pic. 4). Then the machine can be adjusted and mounted on the processor
- Nuts which due to their shape and size cannot be crushed even when the nutcracker is set to need to be

cracked in another way, e.g. 'manually'.

## Food preparation

The accessory can be used to process walnuts, hazelnuts, macadamia nuts, Brazil nuts, almonds.

## Recommendation

- If you are processing animal feed in addition to food, do not use it for food purposes and subsequent
- Preparation time (processing) depends on the quantity, type and quality of the food used but the processing is usually completed in

## Setting 'fineness / roughness' of crushing (pic. 3)

Depending on the type/size of the used nuts and the degree of crushing required, use the control disc **V1** to set the optimum distance of the crushing mechanism so that you are able to crush the shell. By turning the disc clockwise (i.e. to the right), you reduce the distance between the crushing wheel and the wall (**Min. 9 mm**); by turning it counterclockwise (i.e. to the left), you achieve a greater distance between the crushing wheel and the wall (**Max. 29 mm**). Use a few larger nuts for easier setup.

## Application

Place either a stainless steel bowl or another suitable container in which you will collect nuts with the crushed shells under the attachment. Plug the power cord into a socket. Switch the appliance on by turning the speed control to level **3**. Insert the food into the filling hole gradually to prevent the neck of the attachment body from filling up to the upper edge. The pusher **V3** is designed to smoothly move the food into space. Use it with reasonable force after inserting the individual pieces into the filling opening but not to push the completely filled neck with food up to the upper edge. The food comes out through the outlet into the prepared container. Nuts that have not been crushed when passing through for the first time can be processed after resetting the nutcracker for the second time. After processing, switch the power unit off by turning the knob to **0/OFF** position.

## Storing nuts

Nuts are not intended for long-term storage as they tend to turn rancid soon, catch mould quickly or are attacked by various pests (food moths), making them unusable for food purposes. Do not store nuts in an environment where there are strong odours or smells nearby, as they absorb them.

We recommend storing shelled nuts under the following conditions:

Place them in an airtight container and store them in a dry, cool and dark place. The nuts stored in this way last for several weeks. If you put the container in the refrigerator, they will last three to four months and, if stored in the freezer, they will last up to 1 year. For long-term storage, it is necessary to either preserve the nuts or soak them e.g. in honey.

## MAINTENANCE

(pic. 5)

Do not use abrasive and aggressive cleaning agents!

**After use, wipe the nutcracker with a clean cloth. Do not immerse in water and do not wash it in a dishwasher (avoid water getting in the internal components)!**

Take care that the binding surfaces and the sealing elements are functional. Never dry plastic moulded parts above a heat source (e.g. **fire stove, electric/gas stove**). Store the appliance thoroughly cleaned in a dry, dust-free location that is out of reach of children and incapacitated persons.

## ENVIRONMENT

If the dimensions allow, there are marks of materials used for production of packing, components and accessories as well as their recycling on all parts. The symbols specified on the product or in the accompanying documentation mean that the used electrical or

electronic products must not be disposed of together with municipal waste. For proper disposal, hand them over at the special collection places where they will be accepted free of charge.

Suitable disposal of the product can help to maintain valuable natural resources and to prevent possible negative impacts on the environment and human health, which could be the possible consequences of improper waste disposal. Ask for more details at the local authority or at a collection site. Fines can be imposed for improper disposal of this type of waste in agreement with the national regulations.


Failure to comply with the instructions of the manufacturer will lead to expiration of the right to guarantee repair!

## TECHNICAL DATA

- Weight (kg) approx. 1.3
- Nutcracker revolutions (at set speed of min. / 3) 100 – 200 rpm.

The manufacturer reserves the right to change the technical specifications and accessories for the respective models

## Documents / Resources

	<p><a href="#">ETA Nutcracker</a> [pdf] User Guide Nutcracker</p>
---	---

## References

- [AEG Hausgeräte | Setzen Sie auf Qualität | AEG](#)
- [Serwis Digison](#)
- [ElektroEko – Odbiór odpadów elektro](#)
- [ETA - tady je doma](#)
- [ETA - tu je doma](#)