



eta 0029 90000 White Food Processor with Additional Machines Instruction Manual

[Home](#) » [ETA](#) » eta 0029 90000 White Food Processor with Additional Machines Instruction Manual 

Contents

- 1 eta 0029 90000 White Food Processor with Additional Machines
- 2 SAFETY PRECAUTIONS
- 3 DESCRIPTION OF THE ACCESSORIES
- 4 PREPARATION FOR USE
- 5 USING THE APPLIANCE AND ACCESSORIES
- 6 MAINTENANCE
- 7 ENVIRONMENT
- 8 TECHNICAL DATA
- 9 Documents / Resources
 - 9.1 References
- 10 Related Posts



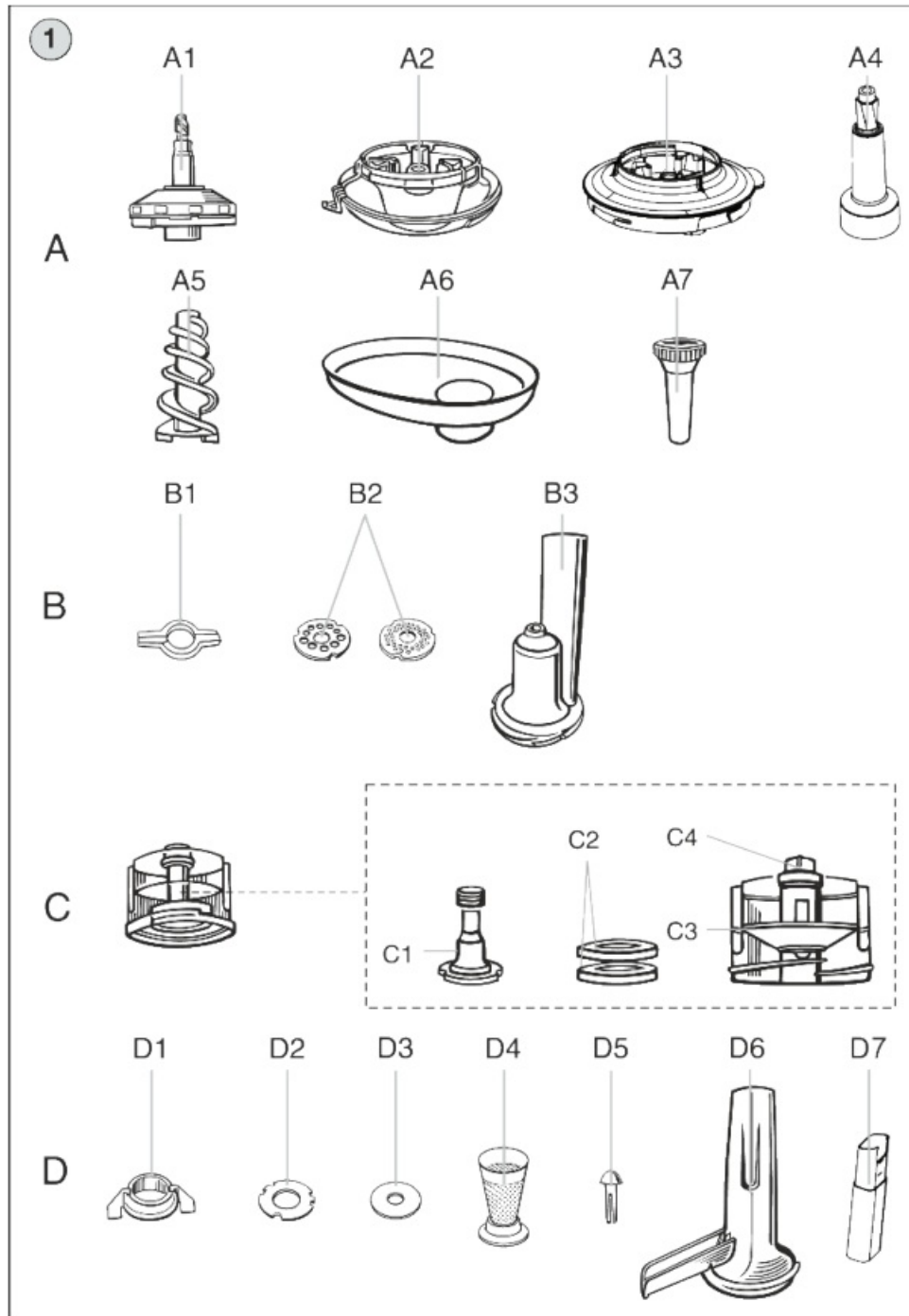
eta 0029 90000 White Food Processor with Additional Machines



INSTRUCTION FOR USE

Dear customer, thank you for purchasing our product. Prior to putting this device into operation, please read these instructions for use carefully and be sure to store well these instructions along with the warranty card, receipt and, if possible, also the product packaging and its inner contents.

SAFETY PRECAUTIONS

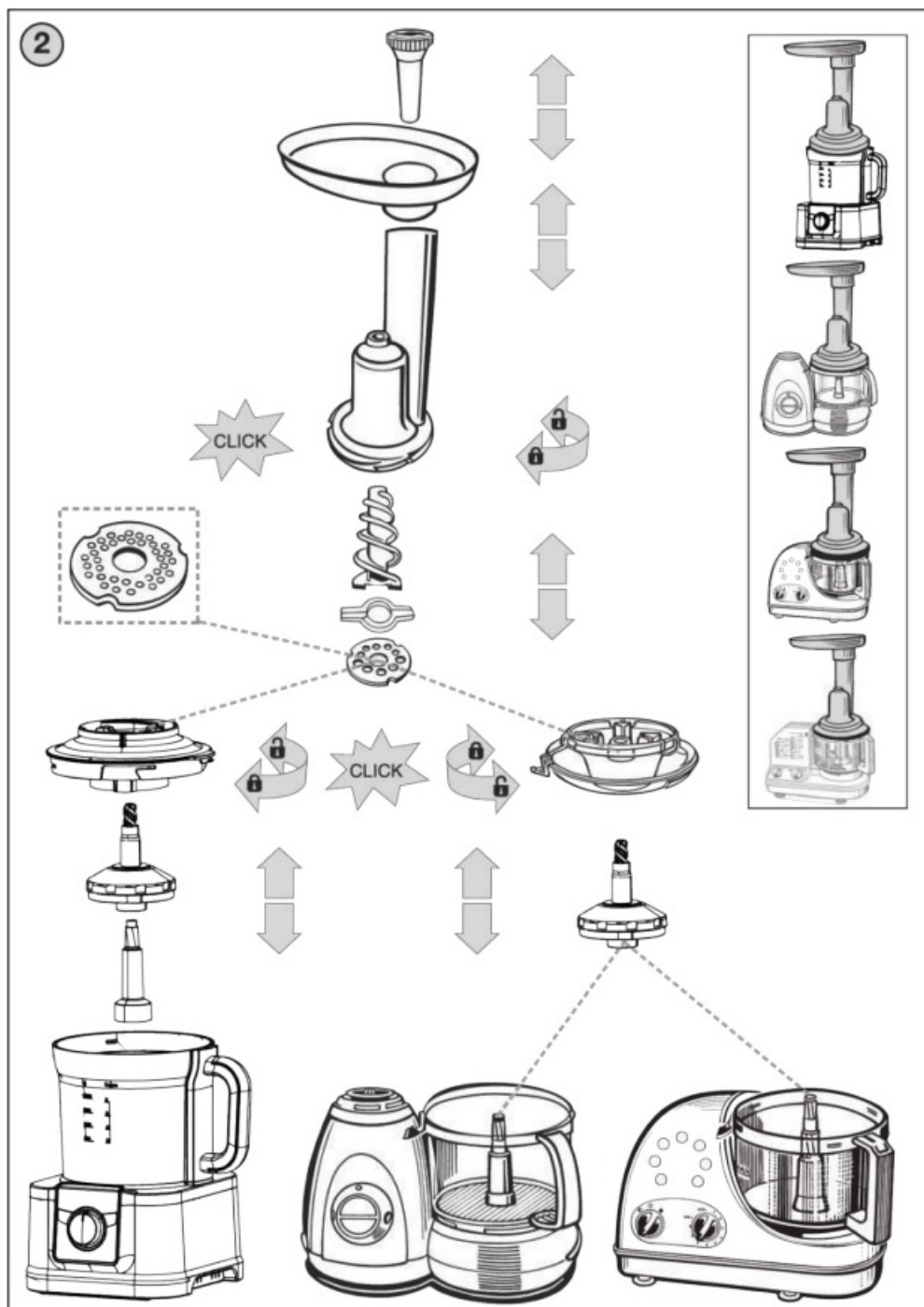


- Before first use, read these instructions for use carefully, look at the pictures and keep these instructions for use for future reference. Consider these instructions to be a part of the appliance and pass them on to any other user of the device.
- Never use the extra attachments if they are not working properly, if they fell to the ground and got damaged. In such cases take the extra attachments to a specialized service to check their safety and proper function.
- This appliance may not be used by children! Keep the appliance out of the reach of children.
- This appliance can be used by people with reduced physical, sensual or mental abilities or lack of experience and knowledge if they are supervised or if they were instructed regarding use of the appliance in a safe way and if they understand possible risks. Children must not play with the appliance.
- Extra attachments are intended for use in households only and for similar use (preparation of food)! They are not intended for commercial use and for use in facilities such as kitchenettes for staff in shops, offices or farms, or in other work environments. The accessories are not intended for use by clients in hotels, motels, B&B

facilities and other accommodation facilities.

- Do not leave the extra attachments running unsupervised and keep an eye on them throughout the whole food preparation process!
- Before replacement of extra attachments or accessible parts that are moving when the appliance is used, before assembly and disassembly, before cleaning or maintenance and after finishing, switch off the drive unit and remove it from the electric power by unplugging the power cord from the electric socket!
- Before preparation, remove possible packages from food (e.g. paper, PE, PP bag, etc.)
- Do not insert the extra attachments into any body orifice.
- Do not exceed the maximum allowed period of continuous operation of the appliance!
- For safety reasons, extra attachments must not be exchanged when the drive unit is running.
- Use the extra attachments only with the food processor designed for their type. Using another type of food processor can present a risk for the operator.
- When assembling the extra attachments, follow the instructions for use carefully, any other way of assembling the extra attachments is not permissible for safety reasons!
- In case that the extra attachment covers are removed accidentally while the appliance is in operation, the safety lock in the lid ensures that the rotating parts of the extra attachments come to a halt. However, the drive unit remains running! In this case no handling with the devices is allowed, switch off the drive unit first by setting the switch to position „0“!
- Do not use the safety lock operated by the container lid A2, A3 to switch off the drive unit of the food processor.
- When the lid is properly attached to the container, the safety lock is released and the appliance can be switched on. If the lid is not attached to the container, the appliance cannot be put into operation!
- Before removing the lid of container A2, A3, allow rotating parts of the extra attachments to stop completely.
- Never immerse transmission A1 and carrier C1 into water or wash them in running water!
- Do not use the juicer if the sieve is damaged, if it shows visible cracks or tears or if the sieve is torn. – Never insert any objects (e.g. fingers, forks, knives, spatulas, spoons) into filling holes, rotating parts of extra attachments (use the provided pusher for this purpose).
- If the food that is being processed starts sticking to the extra attachments (e.g. meat mincer, juicer), switch off the drive unit, dismantle the extra attachments and clean it.
- When handling and cleaning the extra attachments, pay special attention to metal parts (they are sharp).
- Use the extra attachments only for their intended purpose described in these instructions for use. Never use the extra attachments for any other purpose.
- The producer does not undertake any responsibility for damage or injuries caused by improper use of the extra attachments and the accessories (e.g. food deterioration, injuries, cuts) and its guarantee does not cover the appliance in the case of failure to comply with the safety warnings above.

DESCRIPTION OF THE ACCESSORIES



• A Common parts of accessories

- A1 transmission
- A2 container lid (activates and deactivates the safety lock) for ETA 0024, ETA 3024, eTA 0027
- A3 container lid (activates and deactivates the safety lock) for ETA 0029
- A4 drive shaft for ETA 0029
- A5 screw feeder (used with meat mincer and juicer)
- A6 funnel
- A7 pusher

• B Meat mincer

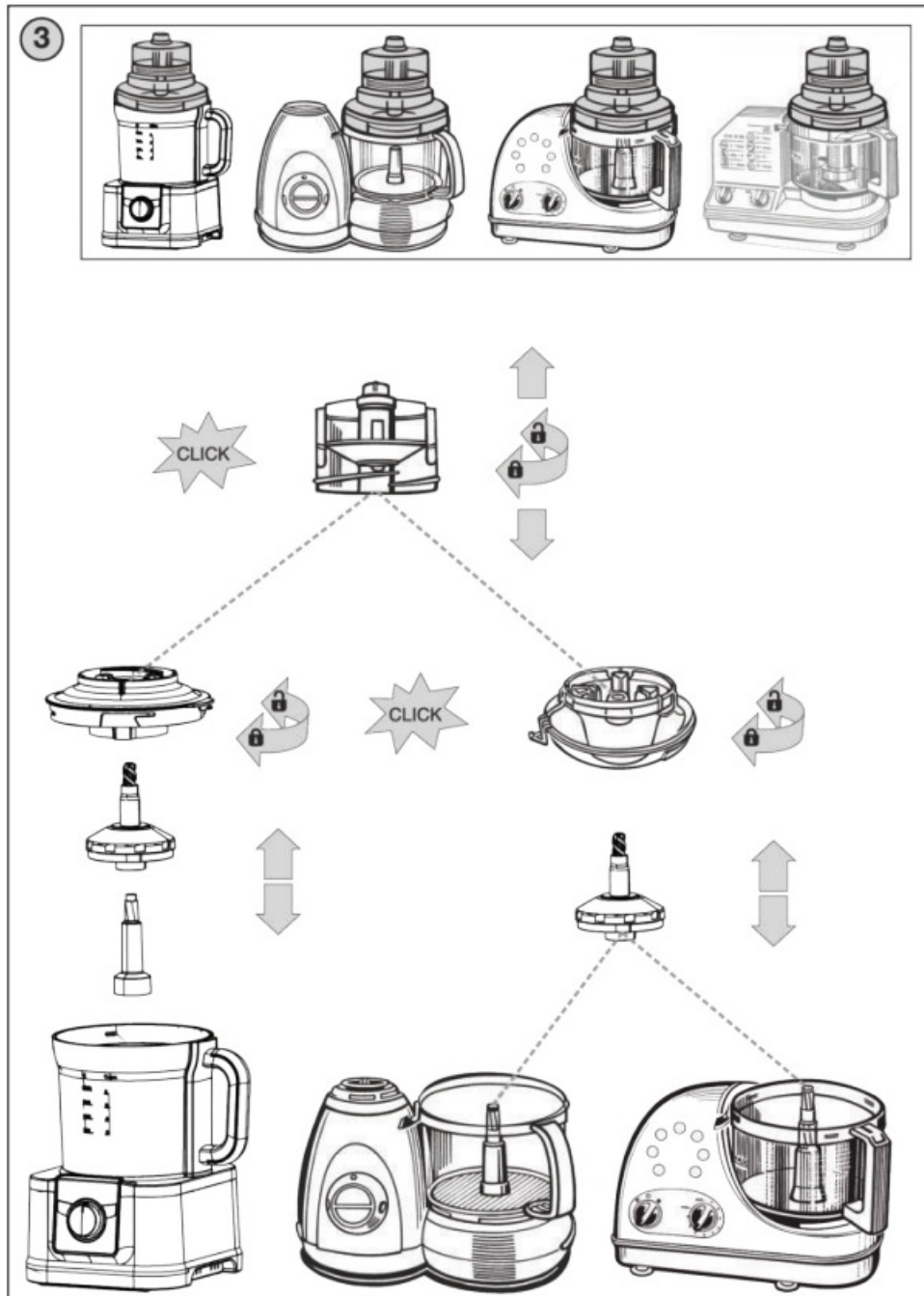
- B1 knife
- B2 interchangeable plates (fine / rough mincing)
- B3 meat mincer cover

- C Poppy seed mill
- C1 carrier
- C2 grinding discs
- C3 grinder body
- C4 grind fineness control

• D Juicer

- D1 ejector
- D2 washer
- D3 rubber gasket
- D4 sieve
- D5 screw feeder cap
- D6 juicer cover
- D7 outlet pipe

PREPARATION FOR USE



Remove all packing material and take out the extra attachments. Remove all possible adhesion foils, stick-on labels or paper from the accessories. Before the first use, wash the parts that will be in contact with food in hot water with a detergent, rinse thoroughly with clean water and wipe till dry, or let it dry. With the poppy seed mill, only wash the grinder body and the grinding discs.

Lid (A2) Designed for the installation of extra attachments to food processors ETA 0024, ETA 3024 Praktic and ETA 0027 Bross.

Lid (A3) Designed for the installation of extra attachments to food processor ETA 0029 Centrino.

Transmission (A1)

Designed for the reduction of the number of revolutions of the drive shaft of the food processor's drive unit so that the extra attachments could be driven by them. Push the transmission through its central hole onto the hexagonal drive shaft of the drive unit, let it slide down as far as it goes. To remove the transmission from the container, proceed in reverse order. Always insert the transmission into the container prior to attaching the lid. No special maintenance of the transmission is required.

WARNING

Prior to the installation of transmission A1 to ETA 0029 Centrino it is necessary to insert drive shaft A4 into the large container. – When mounting or removing the lid, do not apply much pressure on the lid. – When the extra attachments are in operation, occasional distinctive sounds can be let out (transmission = clacking, juicer = whistling). This is completely normal and it is not a reason for lodging a complaint about the appliance.

Meat mincer (B)

Assembly (fig. 2)

Place transmission A1 onto the drive unit of the food processor. Put lid A2 or A3 on the container and secure it by a clockwise movement until the lock of the safety gadget snaps shut. Take special care when carrying out this operation. The lid is now secured in its proper position and the drive unit can start running. Insert the chosen type of plate B2 into lid A2 or A3 so that the mouldings in the plate fit into the projections in the lid. Place knife B1 onto the plate. After that, place the wider end of the screw feeder A5 onto the shaft of transmission A1 and slide it by a left-handed movement until the knife fits into the projection in the screw feeder. Put meat mincer cover B3 onto the screw feeder and attach it in the container lid by a clockwise movement. Place the funnel A6 onto the filling hole of the meat mincer. When dismantling the meat mincer B, proceed in reverse order.

Use

For mincing all kinds of meat without bones, tendon and skin. By using the interchangeable plates B2 with different holes you can choose either fine or rough mincing of meat. Cut up meat into cubes of ca. 3 x 3 x 3 cm in advance. Insert individual pieces of meat into the filling hole and push them with pusher A7 up to the screw feeder (do not overload the attachment excessively). Minced meat is collected in the container placed under the meat mincer.

Recommendation

- Do not mince frozen meat.
- Grinding a hard bakery product (e.g. a roll, bun) towards the end of the process makes cleaning of the meat mincer easier.
- Preparation (processing) time ranges in units of minutes and depends on the quantity, type and quality of used meat.

Poppy seed mill (C) Assembly (fig. 3) Place transmission A1 onto the drive unit of the food processor. Put lid A2 or A3 on the container and secure it by a clockwise movement until the lock of the safety gadget snaps shut. Take special care when carrying out this operation. The lid is now secured in its proper position and the drive unit can start running. Place the assembled poppy seed mill C (with freely rotating discs C2) onto the shaft of transmission

A1 and attach it by a clockwise movement to the container lid A2 or A3. When dismantling the poppy seed mill C, proceed in reverse order. For easier cleaning, the poppy seed mill can be dismantled further (see section V. MAINTENANCE).

Use For grinding poppy seeds. The fineness of grinding can be set by grind fineness control C4. Turning the knob clockwise reduces the distance between the grinding discs and thus the fineness/roughness of grinding can be changed (fig. 5). Never tighten the grinding discs by force! The grinding discs must not touch each other while rotating! Pour poppy seeds into the filling hole of the grinder body (maximum quantity is 150 g). The amount of poppy seeds for processing is regulated by the grooves in grinding discs.

Recommendation – Ensure good quality of poppy seeds. We recommend that you check poppy seeds for presence of any foreign objects before milling (e.g. fragments of stones) which could damage the product (e.g. abrade the grinding discs). Possible complaints within the warranty period as a result of these impurities will not be taken into account. – Use only dry poppy seeds when milling. Poppy seeds must be ground, not pressed, during the milling process, so that they stay loose, do not pulp and do not lose their distinctive flavour. –

Preparation (processing) time ranges in units of minutes and depends on the quantity, type and quality of used poppy seeds.

Juicer (D)

Assembly (fig. 4)

Place transmission A1 onto the drive unit of the food processor. Put lid A2 or A3 on the container and secure it by a clockwise movement until the lock of the safety gadget snaps shut. Take special care when carrying out this operation. The lid is now secured in its proper position and the drive unit can start running. Slide ejector D1 onto the transmission A1 shaft as far as it goes. Place washer D2 onto the lid A2 or A3 so that the mouldings in the washer fit in the projections in the lid. Place rubber gasket D3 on the washer so that it simultaneously slides onto the shaft of transmission A1. After that place sieve D4 on the gasket so that the two projections in the plastic flange of the sieve fit in the mouldings in the washer. Now place the narrower end of screw feeder A5 by a left-handed movement into the sieve so that it slides onto the shaft of transmission A1. Slide cap D5 into the hole in the screw feeder as far as it goes. Put juicer cover D6 on the sieve and attach it by a clockwise movement to the container lid (outlet groove is pointed to the rear part of the container). Place funnel A6 onto the filling hole of the juicer cover. Attach pipe extension D7 to the outlet groove of the juicer and adjust its suitable length according to the container that is used for the collection of juice. When dismantling juicer D, proceed in reverse order. To loosen the screw feeder A5 from the sieve D4 (by a clockwise movement), use the moulding in the end cap of pusher A7.

Use

For pressing juice from soft fruits and citrus fruits. Pressed juice is drained through the groove in the cover into a prepared container and waste (pulp) is stored in the container placed under the juicer. ATTENTION: Do not confuse the function of the juicer with centrifugal juice extractor. Put fruits into the filling hole in such a way that the screw feeder manages to collect them and press them gently with pusher A7. Such way of processing does not overload the drive unit. In case that a larger amount of juice starts accumulating above the screw feeder, it is necessary to switch off the drive unit of the food processor, dismantle the juicer and clean it thoroughly (i.e. remove the pulp settled in the sieve). Preparation (processing) time ranges in units of minutes, the quality and yield of juice depend on the quantity, type, harvest date and quality of used fruits.

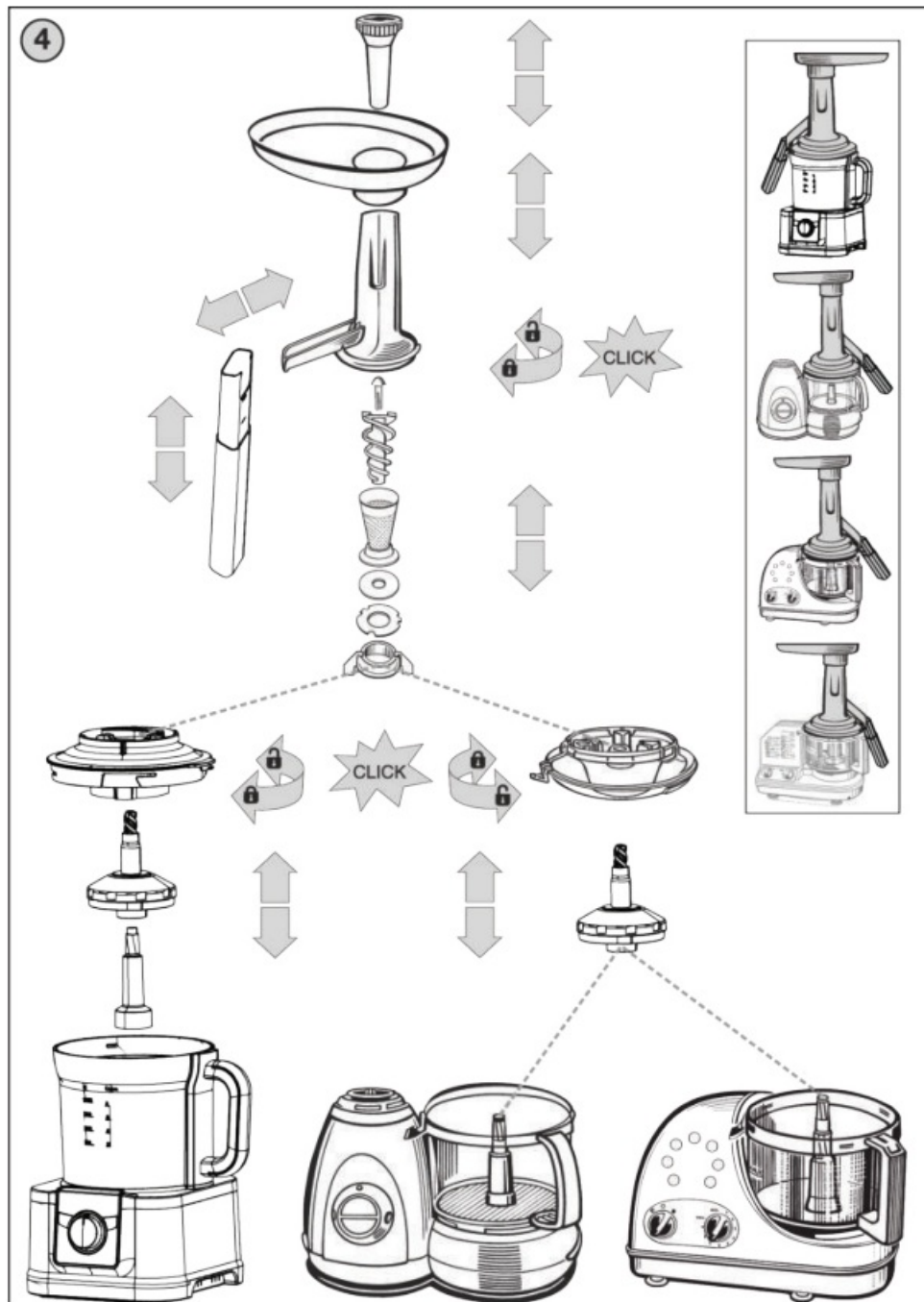
Recommendation

- Citrus fruits are to be peeled. When pressing juice from currant, it is better to leave the whole cluster of currents.
- Wash fruits thoroughly, remove possible stones and thick skin.
- Peel citrus fruits and remove white flesh and pips, otherwise the juice will have a slightly bitter taste.
- Cut up any bigger pieces in advance so that they fit in the filling hole.
- When pushing food through the filling hole, always use the pusher which must be moved downwards slowly and without excessive pressure.
- Check the amount of pulp in a container. If you need to empty the pulp container during the pressing process, switch off the drive unit first. Remove the container. When it is empty, put it back properly

in reverse order.

- To preserve as many vitamins as possible, use up the extracted juice as soon as possible.
- If you need to store the juice for several hours, put it in the refrigerator. The juice remains nicer if you add a few drops of lemon juice into it.
- Juice for children is to be diluted with the same amount of water.
- Pulp can be used for further processing in the kitchen (e.g. for the preparation of soups, sauces, jams, desserts etc.).

USING THE APPLIANCE AND ACCESSORIES



Consider the below processing tips as examples and inspiration only. Their purpose is not to provide instructions but to show various possibilities of processing food. Choose such amount of food for processing so that it does not exceed the maximum contents of containers marked by a line. If the amount of food for processing is higher, it must be divided into several doses and the contents of the container must be checked continuously. We recommend that you stop the operation once in a while, switch off the appliance and remove all possible food that is stuck or that clogged the extra attachments or the container (see par. I. SAFETY WARNINGS). With all the extra attachments, the speed controller of the food processor must be set to position „MAX”.

MAINTENANCE

Before handling the appliance, unplug it from power supply by taking the plug of the power cord out of the socket! Do not use rough and aggressive detergents! To clean transmission A1 and carrier C1, wipe them with a wet cloth with a detergent. Wash all accessories immediately after use in hot water with detergent. Plastic parts are suitable for washing in dishwashers. However, metal parts (B1, B2, C2) are not to be put in dishwashers as they might go dark or rusty because of the detergents there. Be very careful when cleaning knife B1! Make sure that the cutting blades of the knife do not come in contact with hard objects which would make them blunt and thus reduce their efficiency. We recommend that you oil the knife and interchangeable plates by cooking oil after washing and wiping the parts dry. For easier cleaning of the poppy seed mill, it can be dismantled (fig. 6) by turning the grind fineness control C4 anti-clockwise until carrier C1 is unscrewed. After that it is possible to remove grinding discs C2. To assemble the poppy seed mill, proceed in reverse order. When inserting the grinding disc into the grinder body it is necessary to observe the correct position given by three projections. Some ingredients can colour the accessories in a way. However, this does not affect the function of the appliance and is not a reason for a replacement under warranty! This colouring usually disappears on its own after some time. Never dry plastic mouldings over a heat source (e.g. heater, electric/gas stove). Store the extra attachments thoroughly cleaned at a dry, dust-free and safe place, out of the reach of children and incapacitated people.

ENVIRONMENT

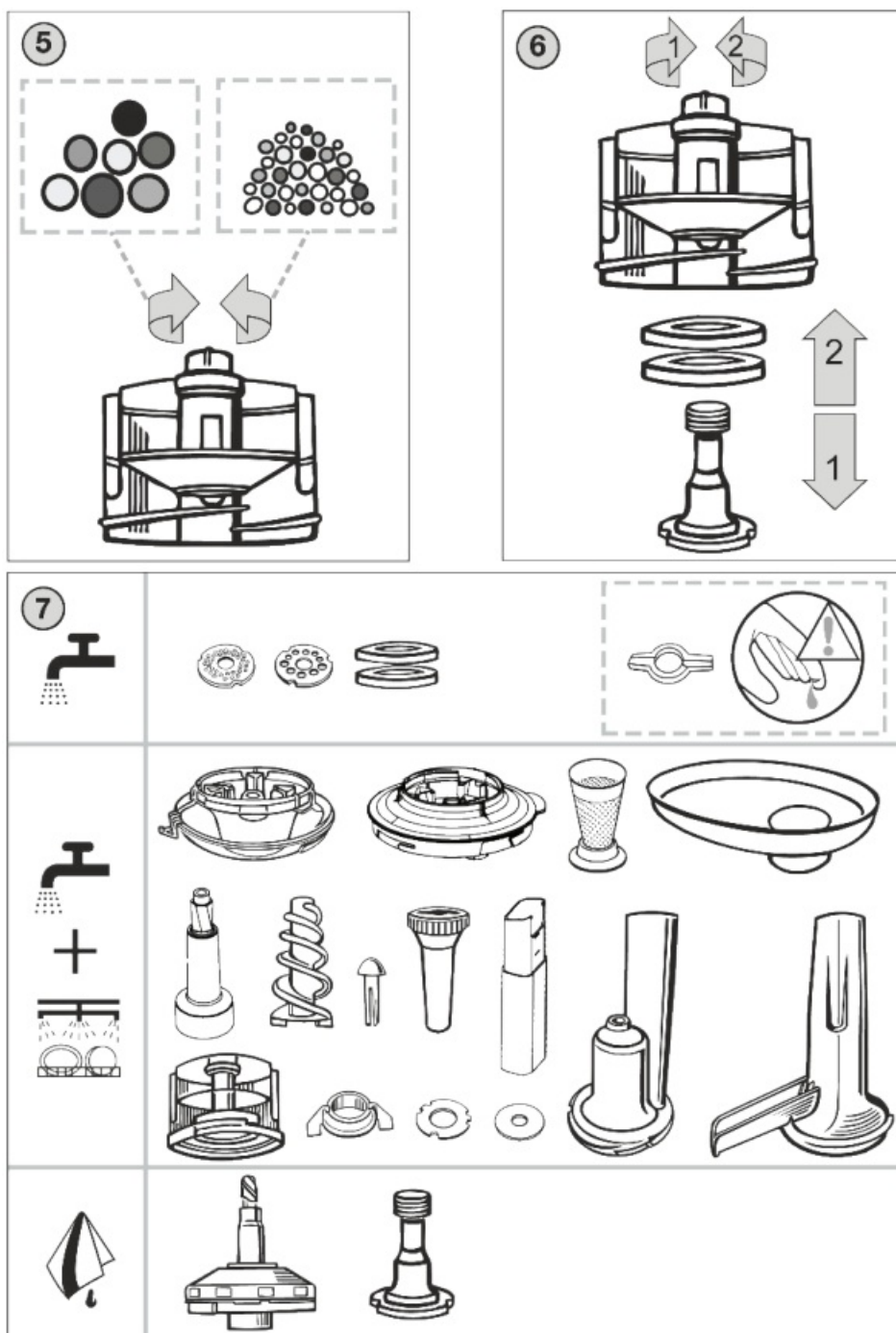
If the dimensions allow, there are marks of materials used for production of packing, components and accessories as well as their recycling on all parts. The symbols specified on the product or in the accompanying documentation mean that the used electrical or electronic products must not be disposed of together with municipal waste. For proper disposal, hand them over at the special collection places where they will be accepted free of charge. Suitable disposal of the product can help to maintain valuable natural resources and to prevent possible negative impacts on the environment and human health, which could be the possible consequences of improper waste disposal. Ask for more details at the local authority or at a collection site. Fines can be imposed for improper disposal of this type of waste in agreement with the national regulations. If the appliance is to be put out of operation, after disconnecting it from power supply we recommend its cutoff and in this way it will not be possible to use the appliance again. More extensive maintenance or maintenance requiring intervention in the inner parts of the appliance must be carried out by professional service! Failure to comply with the instructions of the manufacturer will lead to expiration of the right to guarantee repair!

TECHNICAL DATA

Weight (kg) cca 3,0

The product is in conformity with the European Parliament and European Committee Regulation No. 1935/2004/ES re. Materials and objects designed for contact with food. The manufacturer reserves the right for any insignificant deviations from the standard finished product which do not have any effect on the functioning of the product.

HOUSEHOLD USE ONLY. DO NOT IMMERSE IN WATER OR OTHER LIQUIDS. TO AVOID DANGER OF SUFFOCATION, KEEP THIS PLASTIC BAG AWAY FROM BABIES AND CHILDREN. DO NOT USE THIS BAG IN CRIBS, BEDS, CARRIAGES OR PLAYPENS. THIS BAG IS NOT A TOY. Risk of suffocation: Put the PE, PP bag out of the reach of children. The bag is not a toy.







PRODUCER: ETA a.s., Zelený pruh 95/97, 147 00 Praha 4-Bráník, Czech Republic.

Documents / Resources

	<p>eta 0029 90000 White Food Processor with Additional Machines [pdf] Instruction Manual 0029 90000 White Food Processor With Additional Machines, 0029 90000, White Food Processor With Additional Machines, Processor With Additional Machines, Additional Machines</p>
--	--

References

- [ElektroEko – Odbiór odpadów elektro](#)

-  [Úvod | ELEKTROWIN, a.s.](#)
-  [Úvod - Envidom](#)
-  [ETA - tady je doma](#)
-  [ETA - tu je doma](#)

Manuals+.