



ESTONE TECHNOLOGY IRVC1 Control Panel User Manual

[Home](#) » [ESTONE TECHNOLOGY](#) » ESTONE TECHNOLOGY IRVC1 Control Panel User Manual 

Contents

- 1 ESTONE TECHNOLOGY IRVC1 Control Panel
- 2 Operation Guide
- 3 Smartphone Control
- 4 Voice Control (option)
- 5 System Information
 - 5.1 Specifications:
- 6 FCC
- 7 Documents / Resources
- 8 Related Posts



ESTONE TECHNOLOGY IRVC1 Control Panel



Warning

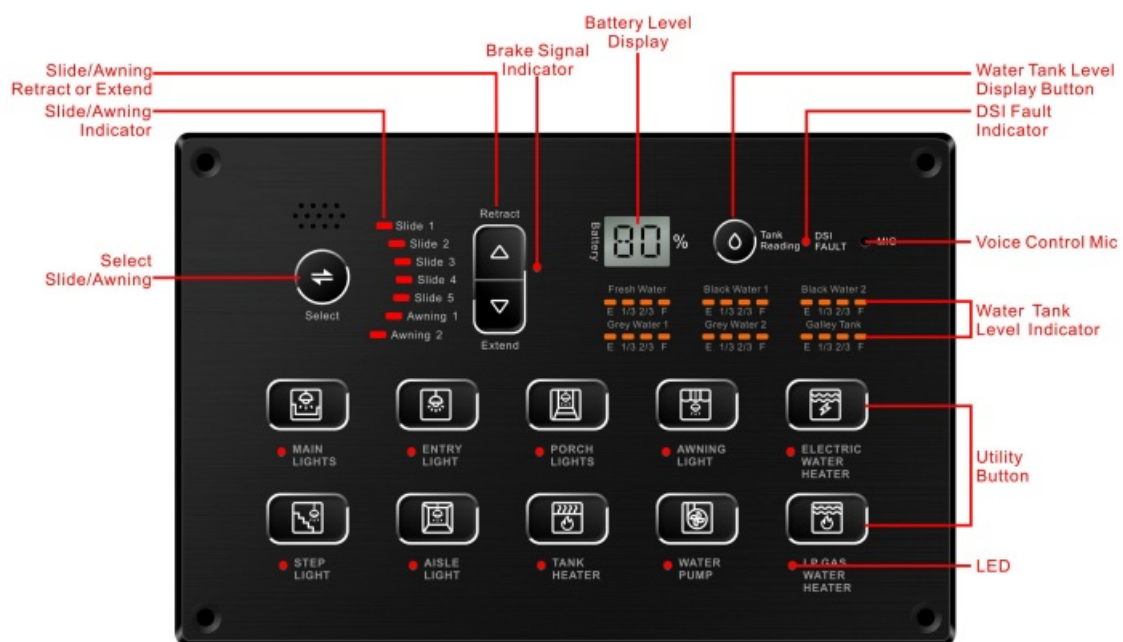
- RV manufacturers may make different wiring and wire colors for different RV floor plan. You must ask RV manufacturers for proper instructions before any installation or modification of this product. Wrong connections of wires may damage devices, cause fire or other lethal result.
- You must contact the RV manufacturer or their authorized service for repairing or modification of this product. Do not attempt to disassemble or adjust this product by unauthorized person.
- Always disconnect the product from power source (battery, converter, solar power. Etc.) before removal, repairing, or installation of this product.
- Read this User Manual carefully before using this product. Failure to follow the instructions could result in personal injury, including death.
- Check RV and its surroundings carefully, especially the slides and awning area, before operations. Must keep unauthorized users, especially children, away from this device. This product must be installed or stored in dry area. Do not expose this product to moisture or water.
- The device manufacture is not liable if the users violates the instructions in this manual.

Operation Guide

- IRVC1 is iRV's newest RV control panel. It works only with iRV new relay box
- IRVBB1 or later models. It does not work with previous iRV product.
- IRVC1 can work simultaneously with iRV TP-70 and CP-M1 panels

General Guide

Figure 1 is a standard IRVC1 photo, which can control 5 slides, 2 awnings, 6 water tanks, and 10 utilities (lights, heaters, pumps). Because of differences in RV floor plans, some models may offer less slides, awnings, and water tanks. The utility name may be slightly different.



Utility Buttons



Figure 2

The utility buttons are for control of lights, heaters, or pumps. When pressed, a LED next to the button will lit up and indicate the on/off status. Please note that the names on these buttons may be different by RV floor plan.

Slide and Awning Buttons

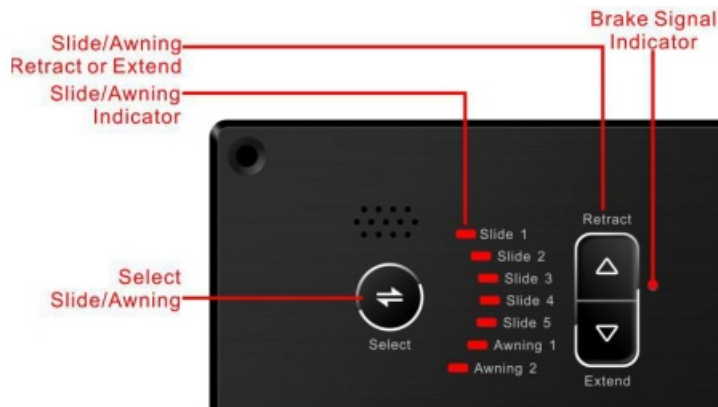


Figure 3

Press the Select button to select the desired slide or awning, then press the Retract or Extend button to operate the slide and awning. The slide/awning movement will stop immediately if the button is released.

Note: the button has slight delay (about 0.5 second) to avoid the accidental press.

Monitor Battery and Water Levels



Figure 4

IRVC1 can monitor up to 6 water tanks. The water level LED is only lit for 1 minute and goes to blank if no action. You must press the Tank Reading button again to resume the water level display.

The battery capacity LCD will be on constantly.

Smartphone Control

Phone app

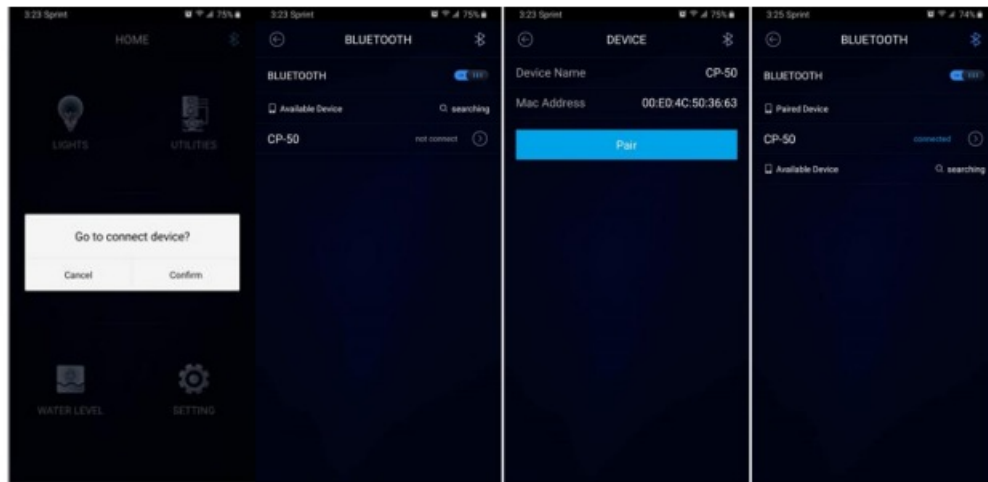
An iPhone or Android phone can connect to iRVC1 by Bluetooth and operate all the control functions. You simply go to Google Play store or Apple store to search and install iRVcontrol" app.

Notes: iPhone must be iPhone 6 or later model. Android phone must Android 6 or later OS.

Pairing phones

This device uses smart pairing technology and no password is needed. However, you must use iRVcontrol app to search and pair. Also the phone must be within 1FT of the device during the pairing period. After pairing, you can operate all functions within 50ft of RV. Not pairing is needed afterward.

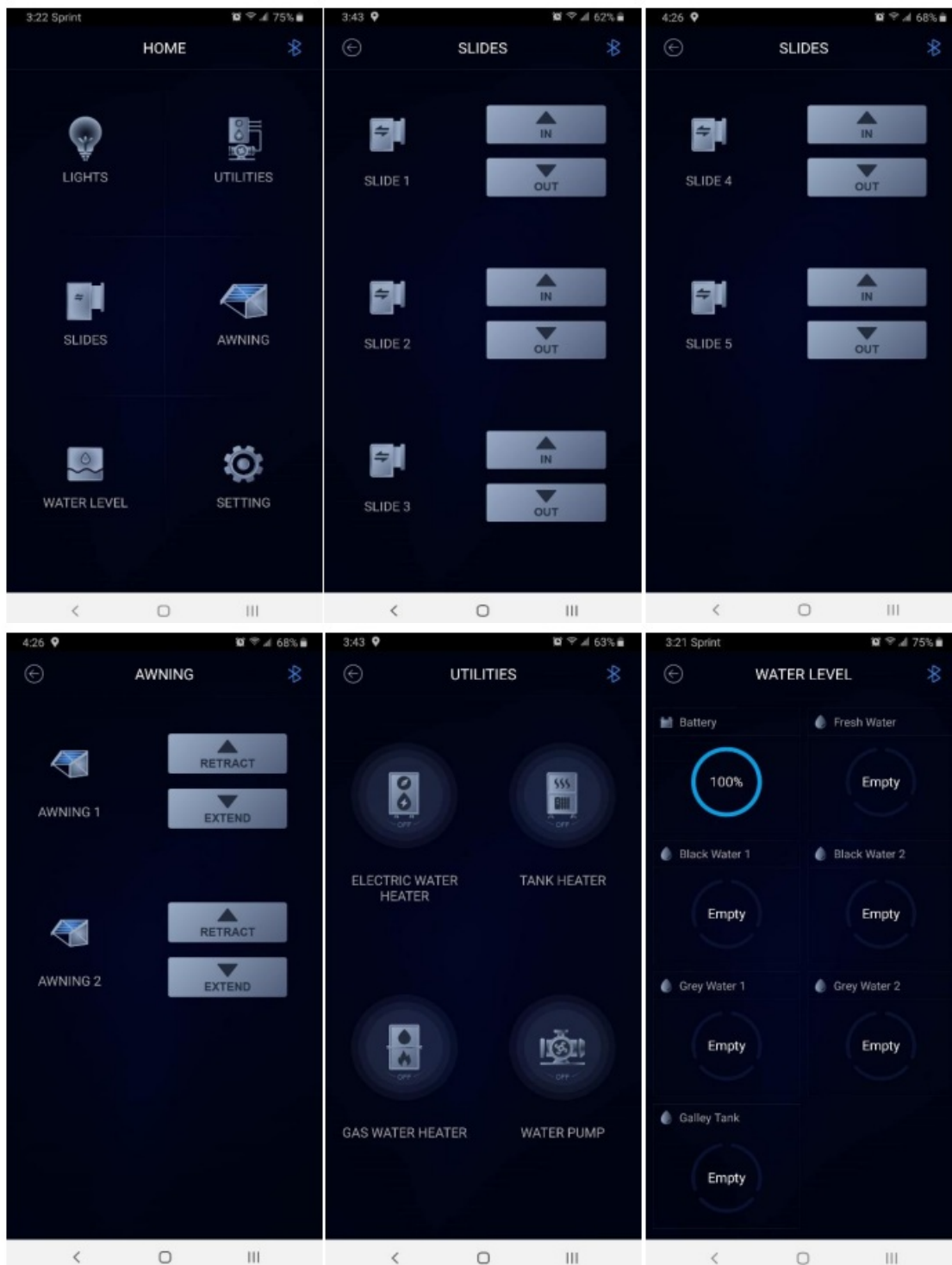
The pairing is easy. After you open iRV Control App, you simply follow the on-screen message.



Notes:

1. If your search in app cannot find iRVC1, it will be the following:
 1. The phone is not within 1FT of iRVC1.
 2. iRVC1 is connected to another phone. This phone must be disconnected (or put 50ft away from RV) in order for your phone to pair.
2. Only one phone can be connected at a time.
3. If your phone has not connected to iRVC1 for 7 days, you must do pairing again. This is a safety design.
4. iRVC1 cannot be detected and paired by normal phone Bluetooth search.

User interface of different functions.



Note:

The water level will display for only one minute and go to blank afterward. You must click the screen to refresh the display.

Voice Control (option)

IRVC1V offers voice control function. This voice function is different than Alexa and does not require internet connection.

Wake Up Command

The wakeup command is “Hello RV”. After panel replies” Hello”, the voice function is ready to use. Repeat Hello RV” if you do not hear the “Hello” reply.

Use Voice Control

The voice can do only on/off function of utilities such as lights, heaters and pumps. For safety concern, it cannot do slide/awning operation.



Figure 6

After voice wake up, you must speak “Turn on” + the exact words on utility button (see above photo) to operate. You must say the exact words and cannot change order. For example, if you say “Turn” + “Entry Light” + “on”, the panel will ignore your voice command.

One voice command a time

After waking up, you can speak one command only. You must speak “Hello RV” again and do the next function.

Time out of voice control

After the panel replies “Hello”, you have 10 seconds to speak a complete voice command. Otherwise it will be time out and not accept any voice command. You must wake up the voice module again.

System Information

IO ports

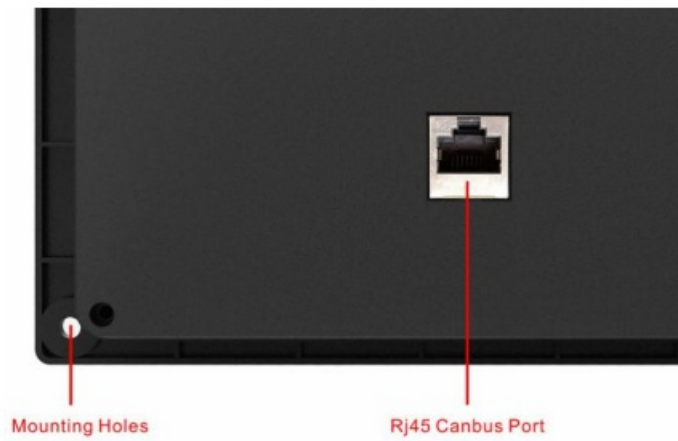


Figure 7



Figure 8

The IO in Figure 7 connects to IRV relay box by any standard RJ-45 cable. It is CAN and 12V DC input combo port.

Note: do not connect to any network port. It will not work and may damage the unit.

The IO in Figure 8 is firmware upgrade port for certified technicians. Please do not upgrade the firmware yourself.

Specifications:

- **Maximum Operating Voltage:** 14.4V
- **Minimum Operating Voltage :** 11.3V
- **Operating Temperature :** -20~60°C
- **Chassis Outline Dimension:** 7.62(W)*4.97(H)*1.03(D) Maximum distance between panel and phone 50ft
- **ESD Protection:** -4KV touch and 8KV air ESD protection

Mounting the controller

See the mounting hole diagram to measure and cut a mounting Hole. Use four #8 PH (0.164" x 0.75") screws.

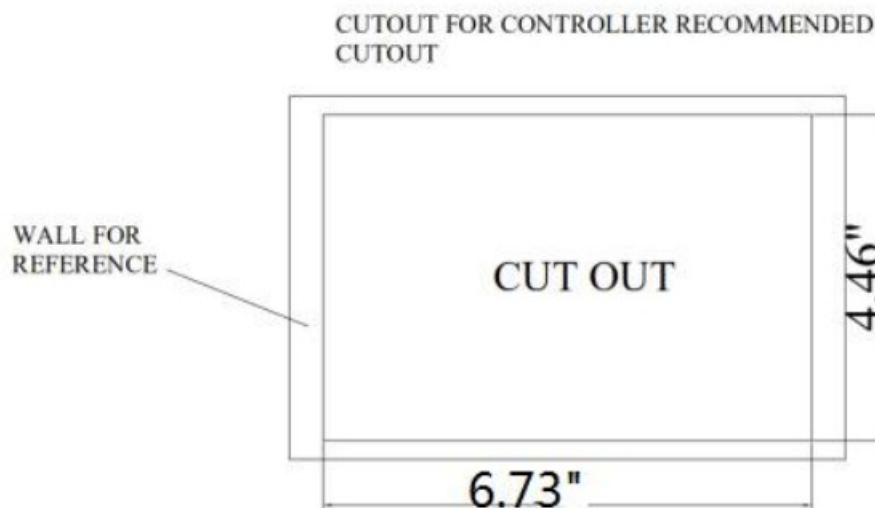


Figure 9

FCC

FCC warning:


Any Changes or modifications not expressly approved by the party responsible for compliance could void the user's authority to operate the equipment.

Note: This equipment has been tested and found to comply with the limits for a Class B digital device, pursuant to part 15 of the FCC Rules. These limits are designed to provide reasonable protection against harmful interference in a residential installation. This equipment generates uses and can radiate radio frequency energy and, if not installed and used in accordance with the instructions, may cause harmful interference to radio communications. However, there is no guarantee that interference will not occur in a particular installation. If this equipment does cause harmful interference to radio or television reception, which can be determined by turning the equipment off and on, the user is encouraged to try to correct the interference by one or more of the following measures:

- Reorient or relocate the receiving antenna.
- Increase the separation between the equipment and receiver.
- Connect the equipment into an outlet on a circuit different from that to which the receiver is connected.
- Consult the dealer or an experienced radio/TV technician for help.

This equipment complies with FCC radiation exposure limits set forth for an uncontrolled environment. This equipment should be installed and operated with minimum distance 20cm between the radiator & your body.

Documents / Resources

	<p>ESTONE TECHNOLOGY IRVC1 Control Panel [pdf] User Manual CP50, 2AUX7-CP50, 2AUX7CP50, IRVC1 Control Panel, IRVC1, Control Panel</p>
---	---