



eSSL RS485 5-Inch Visible Light User Guide

[Home](#) » [eSSL](#) » eSSL RS485 5-Inch Visible Light User Guide 

Contents

1 eSSL® RS485 5-Inch Visible Light User Guide

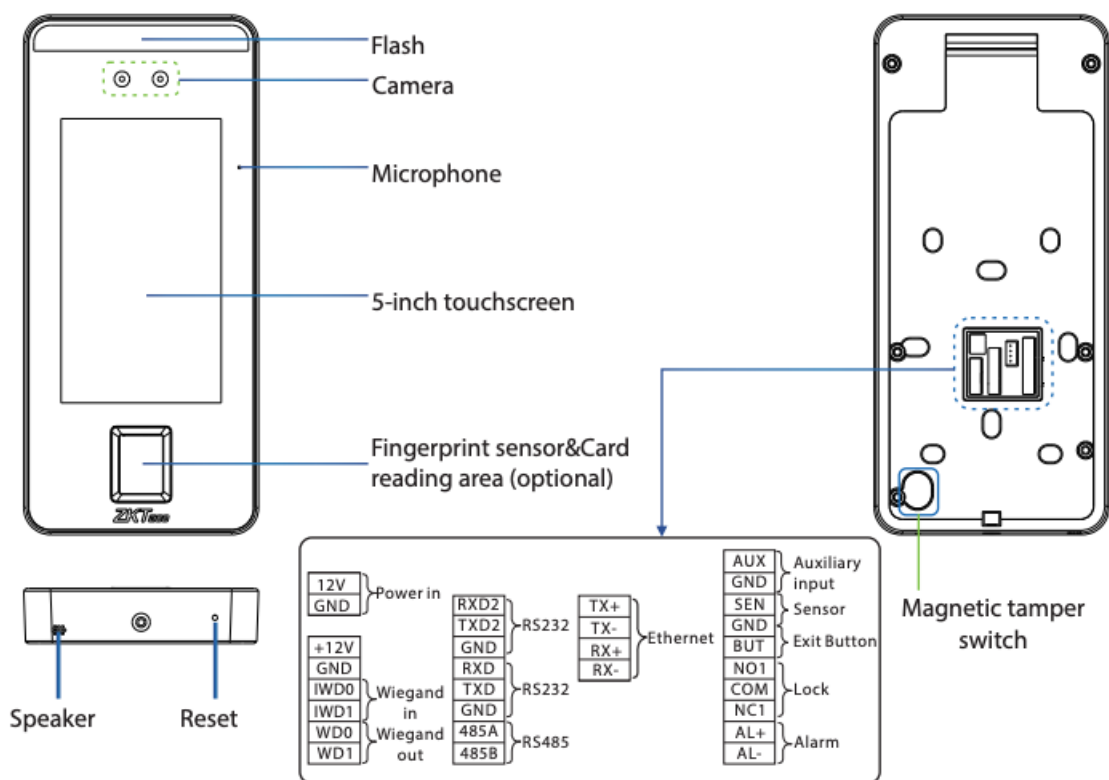
- 1.1 Overview
- 1.2 Device Installation
- 1.3 Standalone Installation
- 1.4 Door Sensor, Exit Button & Alarm Connection
- 1.5 Lock Relay Connection
- 1.6 RS485 and RS232 Connection
- 1.7 Wiegand Reader Connection
- 1.8 Power Connection
- 1.9 Ethernet Connection
- 1.10 User Registration
- 1.11 Ethernet and Cloud Server Settings
- 1.12 Access Control Settings
- 1.13 Records Query
- 2 Documents / Resources
- 2.1 References
- 3 Related Posts

eSSL® RS485 5-Inch Visible Light User Guide

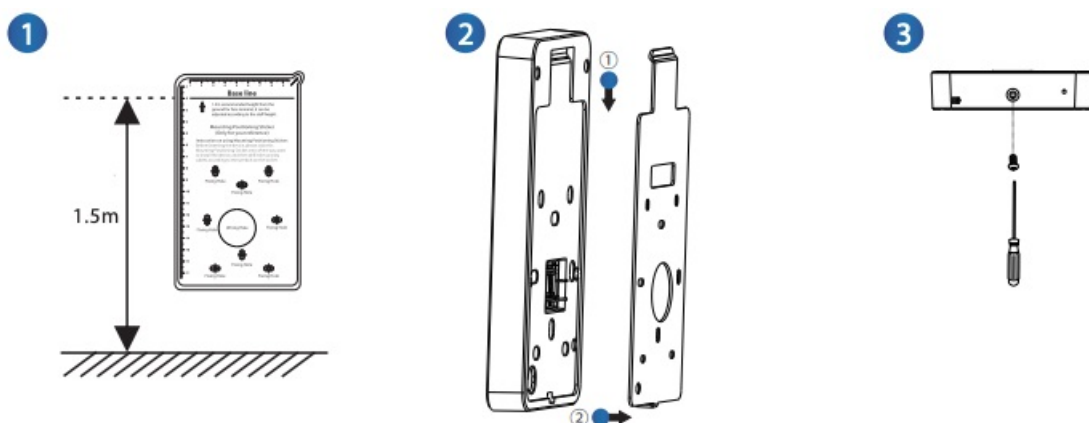


www.esslsecurity.com

Overview

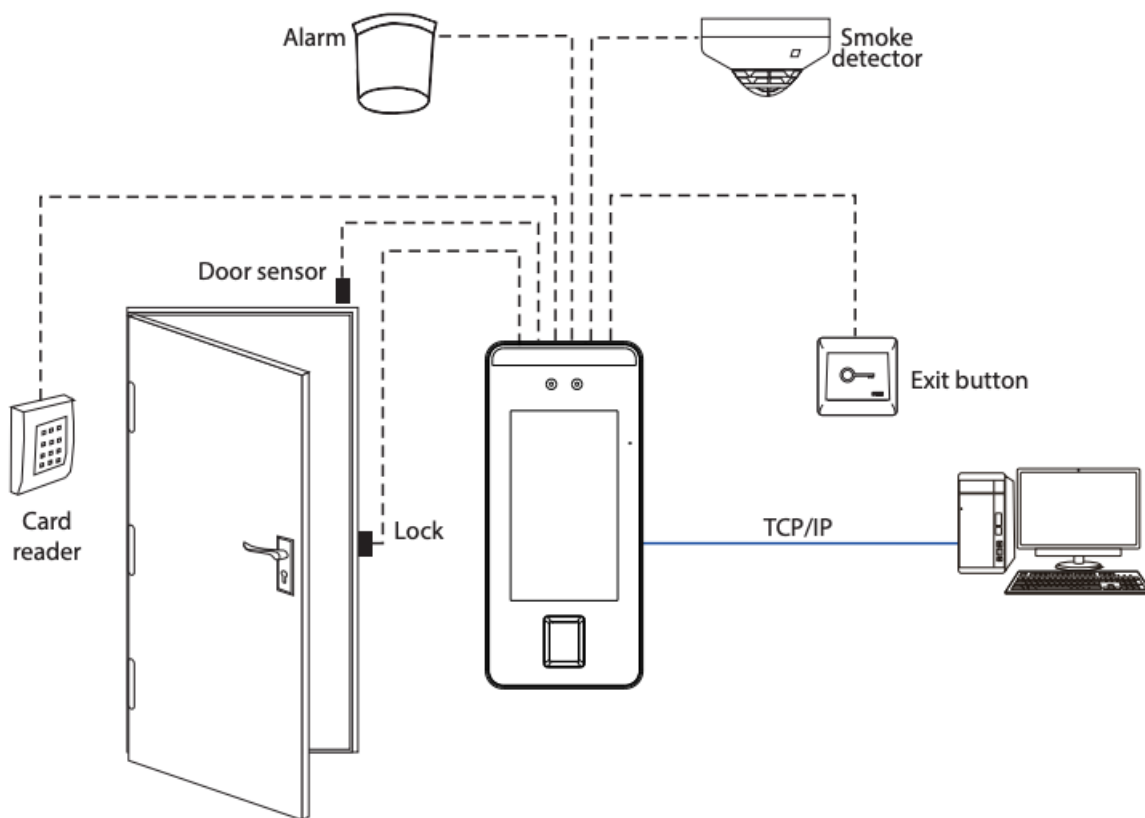


Device Installation

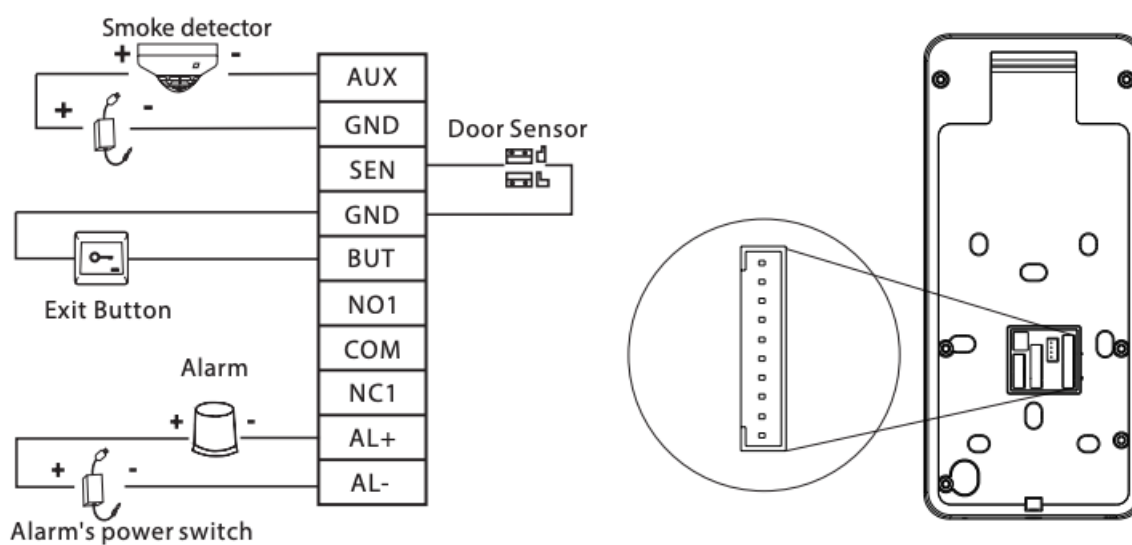


1. Attach the mounting template sticker to the wall, and drill holes according to the mounting paper. Fix the back plate on the wall using wall mounting screws.
2. Attach the device to the back plate.
3. Fasten the device to the back plate with a security screw.

Standalone Installation



Door Sensor, Exit Button & Alarm Connection

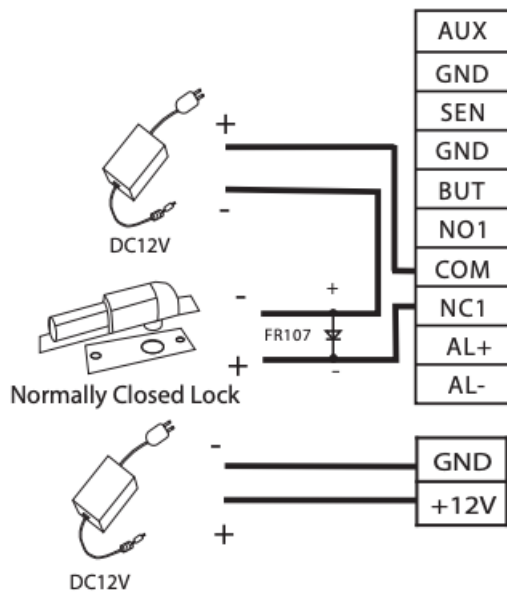


Lock Relay Connection

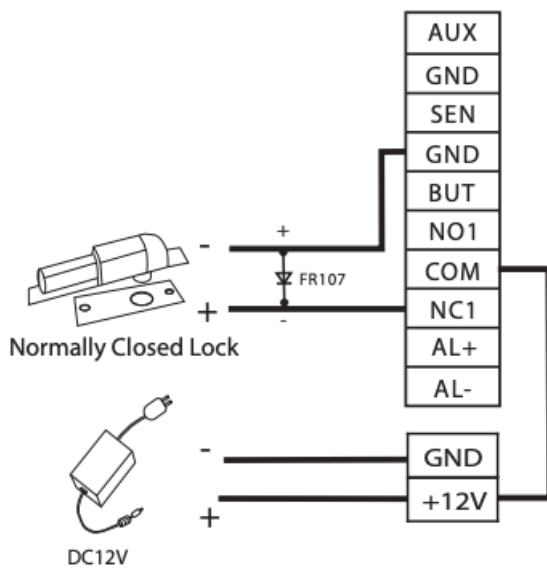
The system supports Normally Opened Lock and Normally Closed Lock.

The NO LOCK (normally opened at power on) is connected with 'NO1' and 'COM' terminals, and the NC LOCK (normally closed at power on) is connected with 'NC1' and 'COM' terminals. Take NC Lock as an example below:

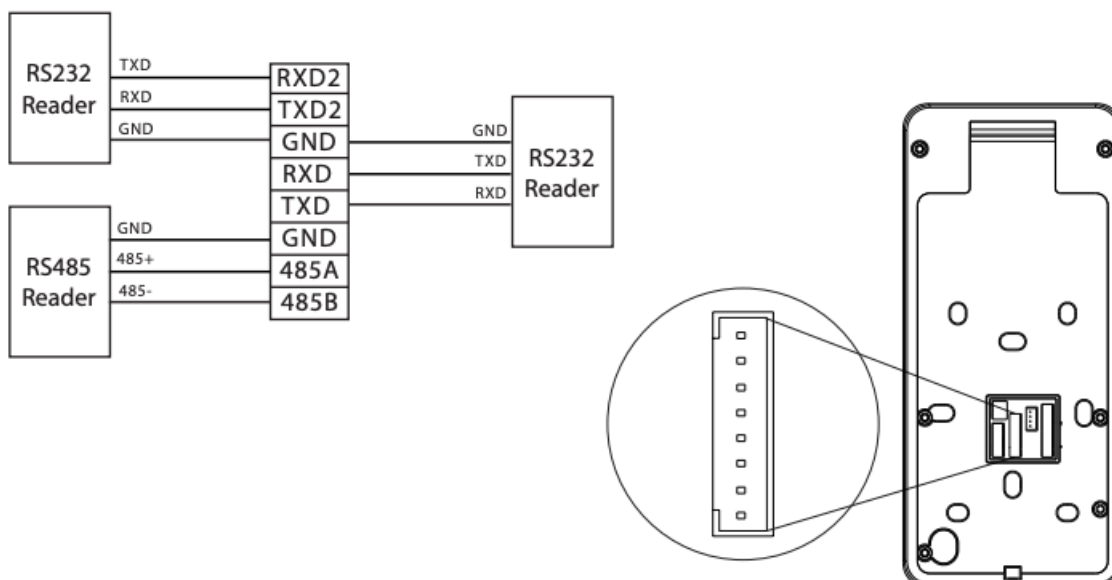
1. Device not sharing power with the lock



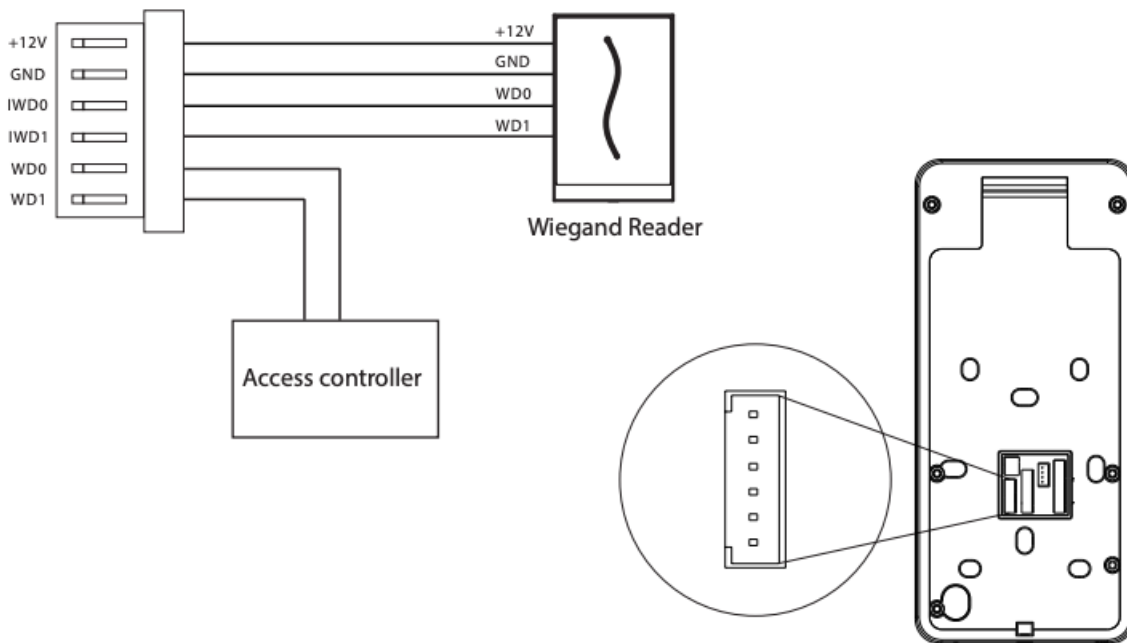
2. Device sharing power with the lock



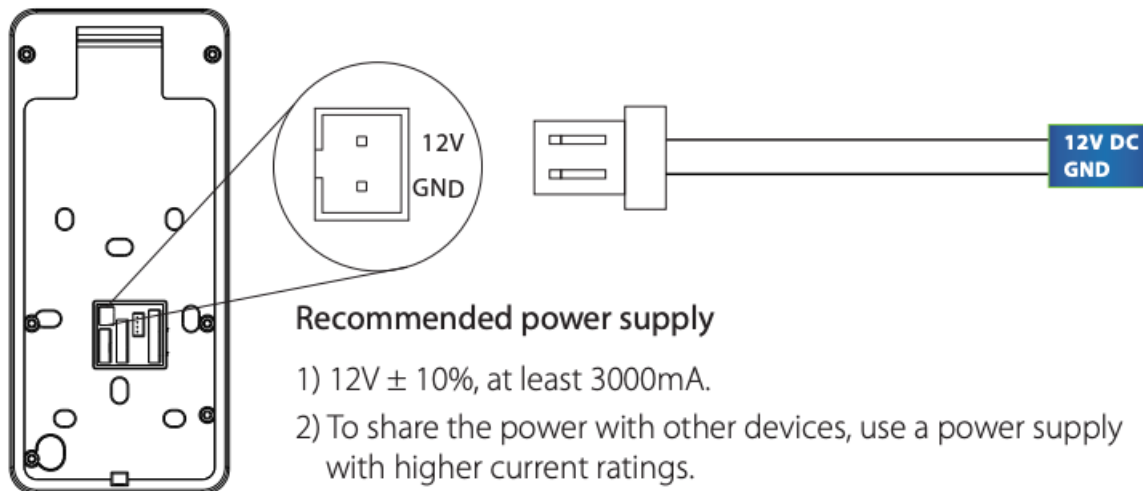
RS485 and RS232 Connection



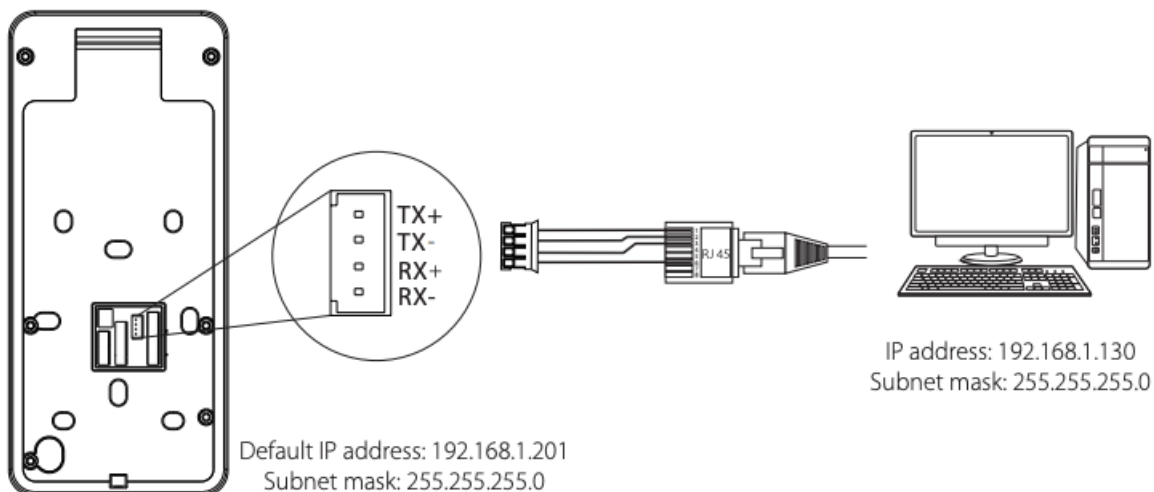
Wiegand Reader Connection



Power Connection




Ethernet Connection




Click [COMM.] > [Ethernet] > [IP Address] , input the IP address and click [OK].

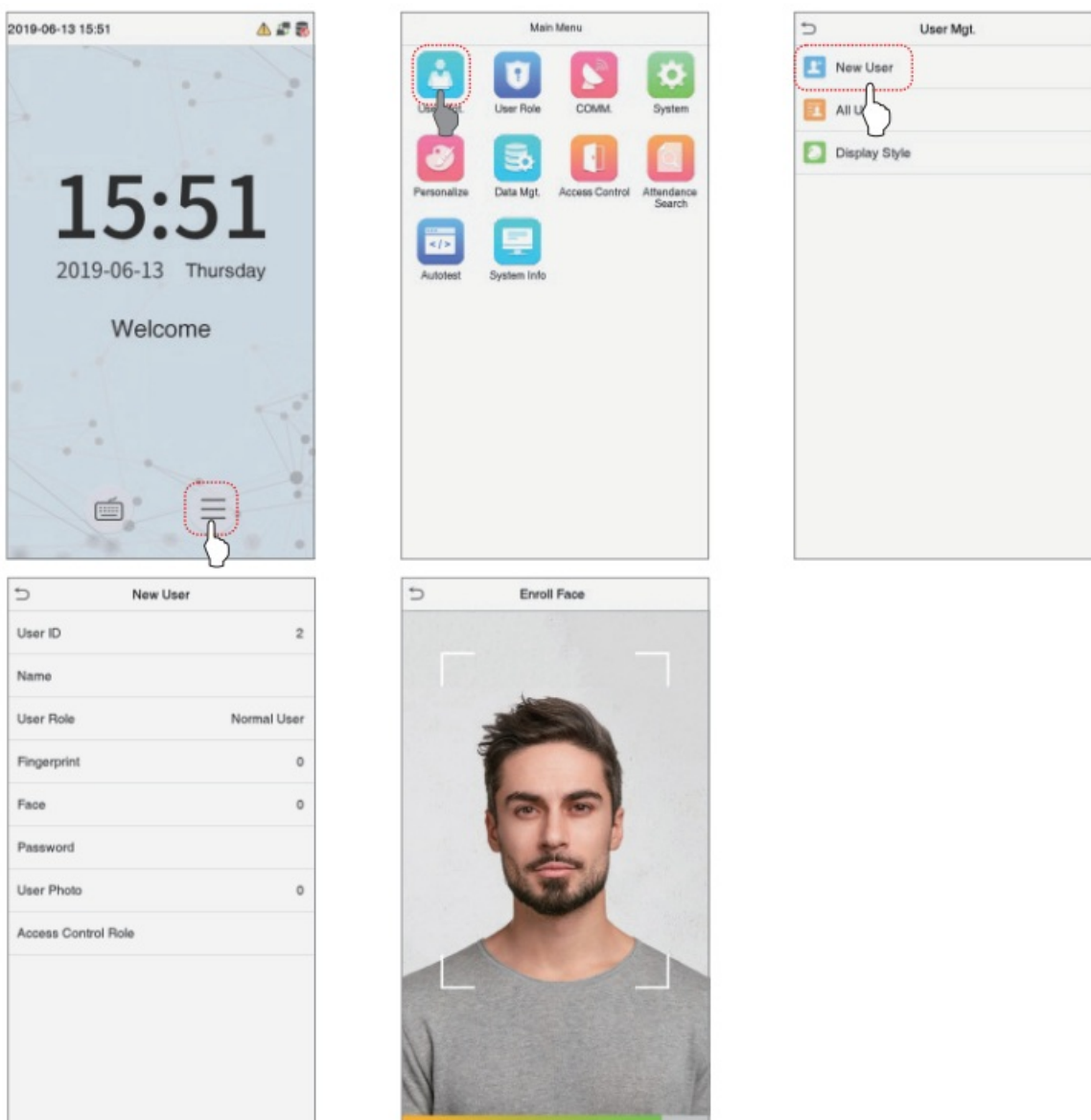
Note: In LAN, IP addresses of the server (PC) and the device must be in the same network segment when connecting to ZKBioSecurity software.

User Registration


When there is no super administrator set in the device, click on  to enter the menu. After setting the super administrator, the system will request for the administrator's verification before entering the menu. For the security purpose, it is recommended to register a super administrator at the first time you use the device.


Method1: Register on the device



Click on  > [User Mgt.] > [New User] to register a new user. Settings include entering user ID and name, registering a fingerprint, face, password, badge (optional) and user photo, setting user role and access control role.

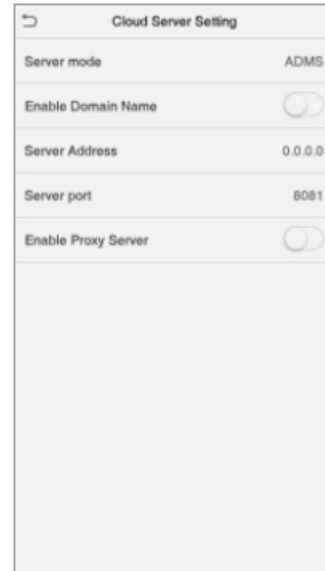
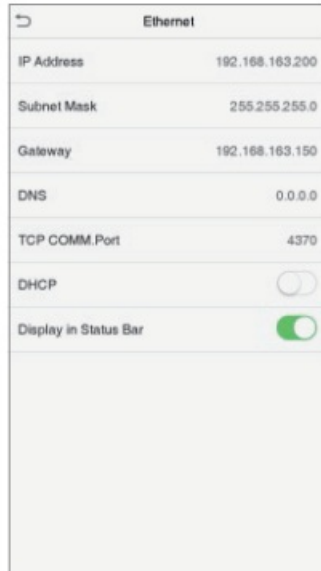
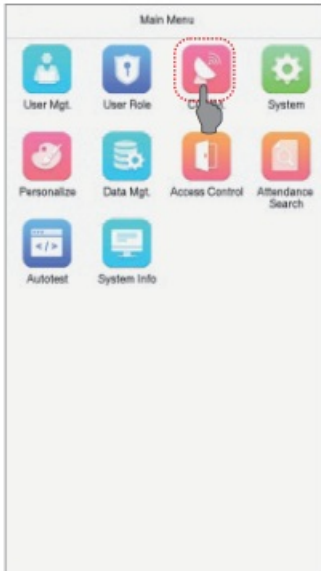


Ethernet and Cloud Server Settings


Click on  > [COMM.] > [Ethernet] to set the network parameters. If the TCP/IP communication of the device is

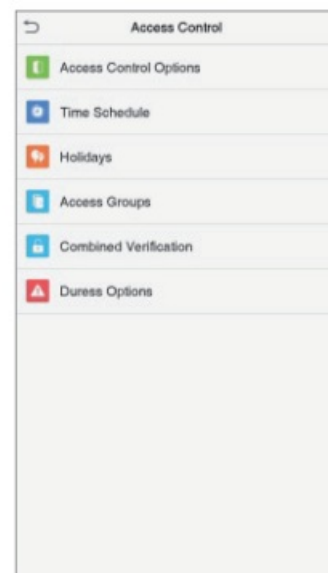
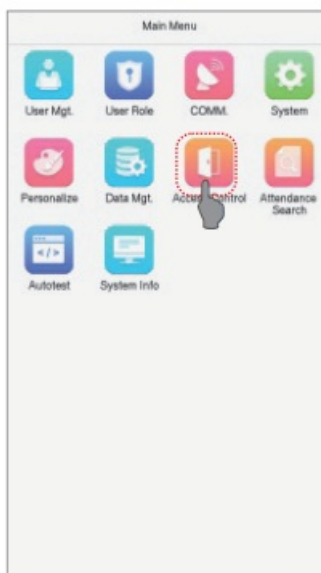
successful, the icon  will be displayed in the upper right corner of the standby interface.

Click on  > [COMM.] > [Cloud Server Setting] to set the server address and server port, that is, the IP address and port number of the server after the software is installed. If the device communicates with the server successfully, the icon  will be displayed in the upper right corner of the standby interface.




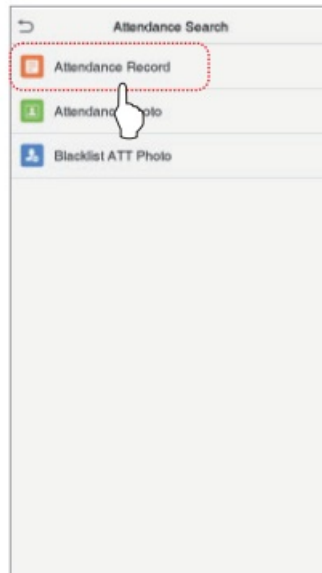
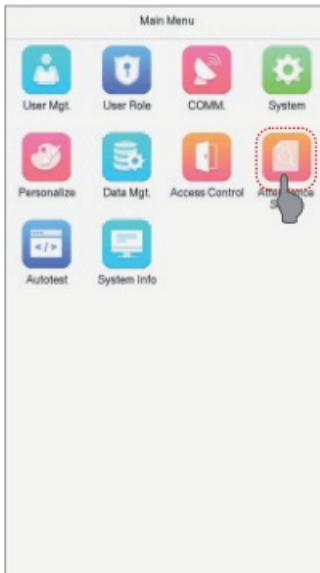
Access Control Settings

Click on  > [Access Control] to enter the access control management interface and set relevant parameters of access control.





Records Query

Click on  > [Attendance Search] > [Attendance Record] to enter the records query interface, input the user ID and select the time range, the corresponding attendance logs will be displayed.



#24, Shambavi Building, 23rd Main, Marenahalli, JP Nagar 2nd Phase, Bengaluru – 560078
 Phone : 91-8026090500 | Email : sales@esslsecurity.com
www.esslsecurity.com

Documents / Resources

| | |
|---|--|
|  <p>Quick Start Guide 5-Inch Visible Light Product</p>  <p>www.esslsecurity.com</p> | <p>eSSL RS485 5-Inch Visible Light [pdf] User Guide RS485 5-Inch Visible Light, RS485, 5-Inch Visible Light</p> |
|---|--|

References

