

# ESPRESSIF ESP32-C3-Mini-1U General-Purpose Wi-Fi and Bluetooth LE Module User Manual

[Home](#) » [ESPRESSIF](#) » ESPRESSIF ESP32-C3-Mini-1U General-Purpose Wi-Fi and Bluetooth LE Module User Manual 



## ESP32C3MINI1U User Manual

### About This Document

This user manual shows how to get started with the ESP32-C3-MINI-1U module.

### Document Updates

Please always refer to the latest version on <https://www.espressif.com/en/support/download/documents>.

### Revision History

For the revision history of this document, please refer to the last page.

### Documentation Change Notification

Espressif provides email notifications to keep you updated on changes to technical documentation. Please subscribe at [www.espressif.com/en/subscribe](http://www.espressif.com/en/subscribe).

### Certification

Download certificates for Espressif products from [www.espressif.com/en/certificates](http://www.espressif.com/en/certificates).

## Contents

[1 Overview](#)

[2 Get Started on ESP32C3MINI-1U](#)

[3 U.S. FCC Statement](#)

[4 IC Statement](#)

[5 Learning Resources](#)

[6 Documents / Resources](#)

[6.1 References](#)

[7 Related Posts](#)

## Overview

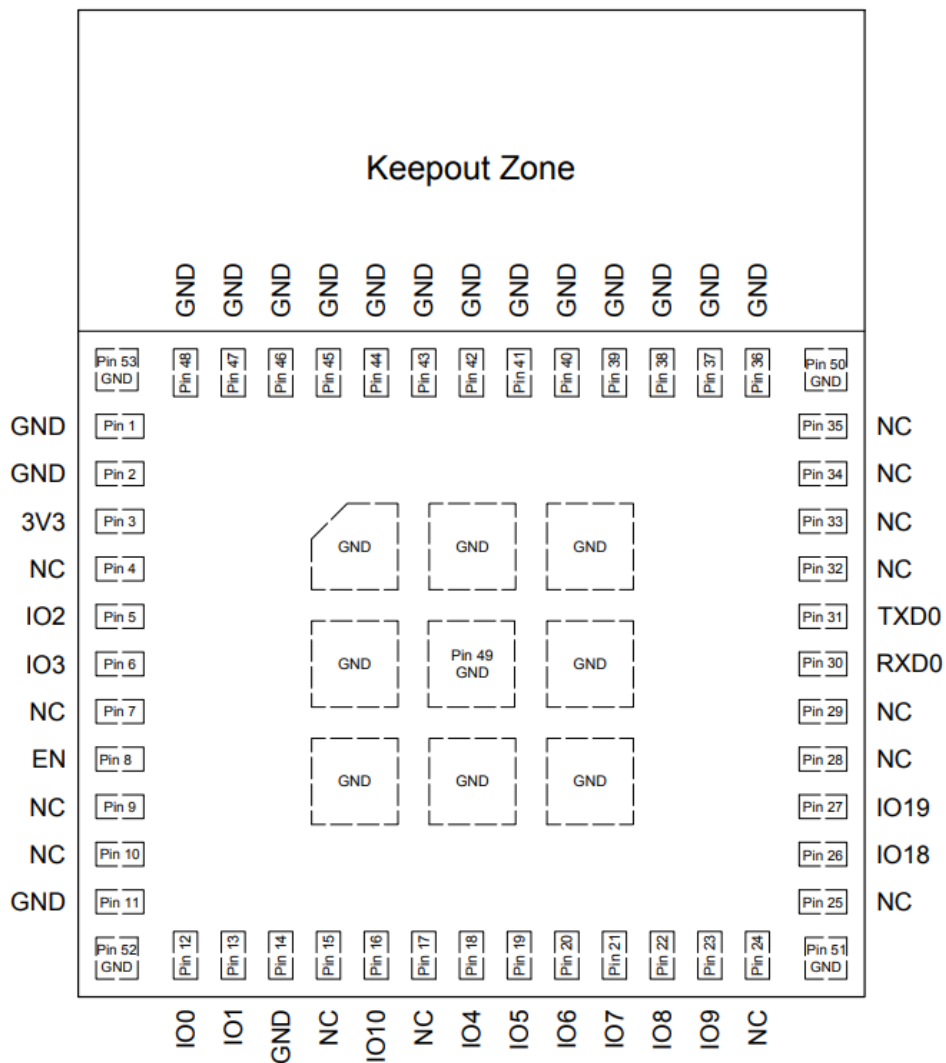
### 1.1 Module Overview

ESP32-C3-MINI-1U is a general-purpose Wi-Fi and Bluetooth LE module. The rich set of peripherals and small size make this module an ideal choice for smart homes, industrial automation, health care, consumer electronics, etc.

### Table 1: ESP32C3MINI1U Specifications

| Categories | Parameters  | Specifications  |
|------------|---|---|
| Wi-Fi      | Protocols   | 802.11 b/g/n (up to 150 Mbps)   |
|            | Frequency range                                   | 2412 ~ 2462 MHz   |
| Bluetooth® | Protocols   | Bluetooth® LE: Bluetooth 5 and Bluetooth mesh   |
|            | Radio   | Class-1, class-2 and class-3 transmitter  |
| Hardware   | Module interfaces                                 | GPIO, SPI, UART, I2C, I2S, remote control peripheral, LED PWM controller, general DMA controller, TWAI® c<br>ontroller (compatible with ISO 11898-1), temperature s<br>ensor, SAR ADC |
|            | Integrated crystal                                | 40 MHz crystal  |
|            | Operating voltage/Power supply                    | 3.0 V ~ 3.6 V   |
|            | Operating current                                 | Average: 80 mA  |
|            | Minimum current delivered by the po<br>wer supply | 500 mA  |
|            | Ambient temperature                               | –40 °C ~ +105 °C  |
|            | Moisture sensitivity level (MSL)                  | Level 3   |

## 1.2 Pin Description



**Figure 1: Pin Layout (Top View)**

The module has 53 pins. See pin definitions in Table 2.

For peripheral pin configurations, please refer to **ESP32-C3 Series Datasheet**.

**Table 2: Pin Definitions**

| Name | No.                 | Type  | Function  |
|------|---------------------|-------|---|
| GND  | 1, 2, 11, 14, 36-53 | P     | Ground  |
| 3V3  | 3                   | P     | Power supply  |
| NC   | 4                   | —     | NC  |
| IO2  | 5                   | I/O/T | GPIO2, ADC1_CH2, FSPIQ  |
| IO3  | 6                   | I/O/T | GPIO3, ADC1_CH3   |
| NC   | 7                   | —     | NC  |
| EN   | 8                   | I     | High: on, enables the chip. Low: off, the chip powers off.<br>Note: Do not leave the EN pin floating. |
| NC   | 9                   | —     | NC  |
| NC   | 10                  | —     | NC  |

**Table 2 – contd from the previous page**

| Name | No. | Type  | Function                    |
|------|-----|-------|-----------------------------|
| IO0  | 12  | I/O/T | GPIO0, ADC1_CH0, XTAL_32K_P |
| IO1  | 13  | I/O/T | GPIO1, ADC1_CH1, XTAL_32K_N |
| NC   | 15  | —     | NC                          |
| IO10 | 16  | I/O/T | GPIO10, FSPICS0             |
| NC   | 17  | —     | NC                          |

|      |    |       |                               |
|------|----|-------|-------------------------------|
| IO4  | 18 | I/O/T | GPIO4, ADC1_CH4, FSPIHD, MTMS |
| IO5  | 19 | I/O/T | GPIO5, ADC2_CH0, FSPIWP, MTDI |
| IO6  | 20 | I/O/T | GPIO6, FSPICLK, MTCK          |
| IO7  | 21 | I/O/T | GPIO7, FSPID, MTDO            |
| IO8  | 22 | I/O/T | GPIO8                         |
| IO9  | 23 | I/O/T | GPIO9                         |
| NC   | 24 | —     | NC                            |
| NC   | 25 | —     | NC                            |
| IO18 | 26 | I/O/T | GPIO18                        |
| IO19 | 27 | I/O/T | GPIO19                        |
| NC   | 28 | —     | NC                            |
| NC   | 29 | —     | NC                            |
| RXD0 | 30 | I/O/T | GPIO20, U0RXD,                |
| TXD0 | 31 | I/O/T | GPIO21, U0TXD                 |
| NC   | 32 | —     | NC                            |
| NC   | 33 | —     | NC                            |
| NC   | 34 | —     | NC                            |
| NC   | 35 | —     | NC                            |

## 2.1 What You Need

To develop applications for the ESP32-C3-MINI-1U module you need:

- 1 x ESP32-C3-MINI-1U module
- 1 x Espressif RF testing board
- 1 x USB-to-Serial board
- 1 x Micro-USB cable
- 1 x PC running Linux

In this user guide, we take Linux operating system as an example. For more information about the configuration on Windows and macOS, please refer to ESP-IDF Programming Guide.

## 2.2 Hardware Connection

1. Solder the ESP32-C3-MINI-1U module to the RF testing board as shown in Figure 2.

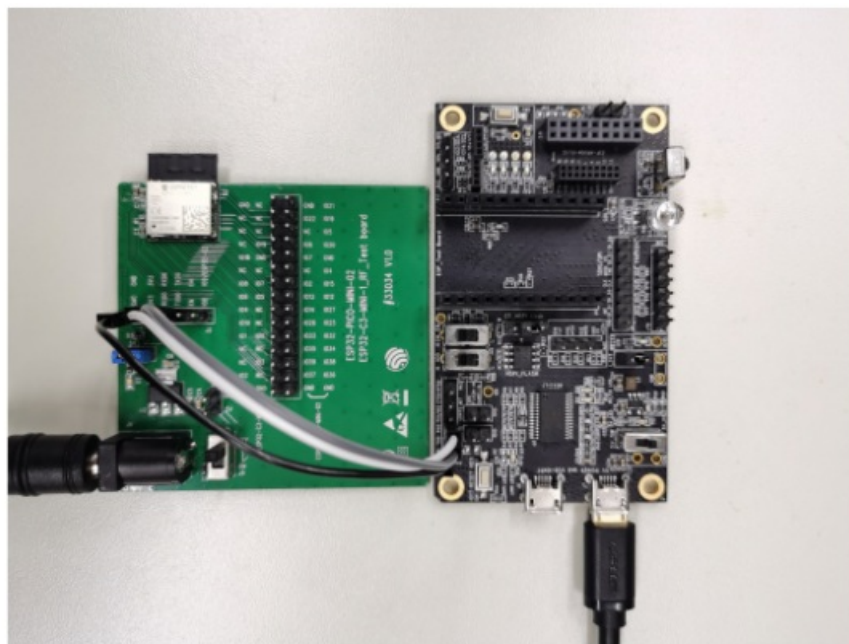


Figure 2: Hardware Connection

2. Connect the RF testing board to the USB-to-Serial board via TXD, RXD, and GND.
3. Connect the USB-to-Serial board to the PC.
4. Connect the RF testing board to the PC or a power adapter to enable a 5 V power supply, via the Micro-USB cable.
5. During download, connect IO0 to GND via a jumper. Then, turn "ON" the testing board.
6. Download firmware into flash. For details, see the sections below.
7. After download, remove the jumper on IO0 and GND.
8. Power up the RF testing board again. ESP32-C3-MINI-1U will switch to working mode. The chip will read programs from flash upon initialization.

### Note:

IO0 is internally logic high. If IO0 is set to pull-up, the Boot mode is selected. If this pin is pull-down or left floating, the Download mode is selected. For more information on ESP32-C3-MINI-1U, please refer to **ESP32-C3-MINI-1 & ESP32-C3-MINI-1U Datasheet**.

## 2.3 Set up Development Environment

The Espressif IoT Development Framework (ESP-IDF for short) is a framework for developing applications based on the Espressif chips. Users can develop applications with ESP chips in Windows/Linux/macOS based on ESP-IDF. Here we take Linux operating system as an example.

### 2.3.1 Install Prerequisites

**To compile with ESP-IDF you need to get the following packages:**

- CentOS 7:
  - 1 Audo yum install git wget flex bison gperf python CMake ninja-build ccache dfuutil
- Ubuntu and Debian (one command breaks into two lines):
  - 1 Sudo apt-get install git wget flex bison gperf python python-pip python set up tools cmake
  - 2 ninja-build ccache life-dev libssl-dev dfu-util
- Arch:
  - 1 sudo Pacman -S --needed GCC git make flex bison gperf python-pip CMake ninja coach default-util

#### Note:

- This guide uses the directory ~/esp on Linux as an installation folder for ESP-IDF.
- Keep in mind that ESP-IDF does not support spaces in paths.

### 2.3.2 Get ESPIDF

To build applications for the ESP32-C3-MINI-1U module, you need the software libraries provided by Espressif in the ESP-IDF repository.

To get ESP-IDF, create an installation directory ( ~/esp) to download ESP-IDF to and clone the repository with 'git clone':

1. media -p ~/esp
2. cd ~/esp
3. git clone --recursive <https://github.com/espressif/esp-idf.git>

ESP-IDF will be downloaded into ~/esp/esp-pdf. Consult [ESP-IDF Versions](#) for information about which ESP-IDF version to use in a given situation.

### 2.3.3 Set up Tools

Aside from the ESP-IDF, you also need to install the tools used by ESP-IDF, such as the compiler, debugger, Python packages, etc. ESP-IDF provides a script named 'install.sh' to help set up the tools in one go.

1. cd ~/esp/esp-idf
2. ./install.sh

### 2.3.4 Set up Environment Variables

The installed tools are not yet added to the PATH environment variable. To make the tools usable from the command line, some environment variables must be set. ESP-IDF provides another script export. sh' which does that. In the terminal where you are going to use ESP-IDF, run:

- 1 . \$HOME/esp/esp-IDF/export.sh



Now everything is ready, you can build your first project on the ESP32-C3-MINI-1U module.

## 2.4 Create Your First Project

### 2.4.1 Start a Project

Now you are ready to prepare your application for the ESP32-C3-MINI-1U module. You can start with the [get-started/hello\\_world](#) project from [examples directory](#) in ESP-IDF.

**Copy get-started/hello\_world to ~/esp directory:**

1. `cd ~/esp`
2. `cp -r $IDF_PATH/examples/get-started/hello_world.`

There is a range of [example projects](#) in the examples directory in ESP-IDF. You can copy any project in the same way as presented above and run it. It is also possible to build examples in place, without copying them first.

### 2.4.2 Connect Your Device

Now connect your ESP32-C3-MINI-1U module to the computer and check under what serial port the module is visible. Serial ports in Linux start with '/dev/tty' in their names. Run the command below two times, first with the board unplugged, then with plugged in. The port which appears the second time is the one you need:

1. `ls /dev/tty*`

**Note:**

Keep the port name handy as you will need it in the next steps.

### 2.4.3 Configure

Navigate to your 'hello\_world' directory from Step 2.4.1. Start a Project, set ESP32-C3 as the target, and run the project configuration utility 'menu configuration'.

1. `cd ~/esp/hello_world`
2. `idf.py set-target esp32c3`
3. `idf.py menuconfig`

Setting the target with 'idf.py set-target esp32c3' should be done once, after opening a new project. If the project contains some existing builds and configurations, they will be cleared and initialized. The target may be saved in the environment variable to skip this step. See [Selecting the Target](#) for additional information.

If the previous steps have been done correctly, the following menu appears:

```
(Top)
Espressif IoT Development Framework Configuration
SDK tool configuration --->
Build type --->
Application manager --->
Bootloader config --->
Security features --->
Serial flasher config --->
Partition Table --->
Compiler options --->
Component config --->
Compatibility options --->

[Space/Enter] Toggle/enter [ESC] Leave menu [S] Save
[O] Load [?] Symbol info [/] Jump to symbol
[F] Toggle show-help mode [C] Toggle show-name mode [A] Toggle show-all mode
[Q] Quit (prompts for save) [D] Save minimal config (advanced)
```

Figure 3: Project Configuration - Home Window

The colors of the menu could be different in your terminal. You can change the appearance with the option ‘-style’.

Please run ‘idf.py menu configuration -help for further information.

#### 2.4.4 Build the Project

Build the project by running:

```
1 idf.py build
```

This command will compile the application and all ESP-IDF components, then it will generate the bootloader, partition table, and application binaries.

1. \$ idf.py build
2. Running cmake in directory /path/to/hello\_world/build
3. Executing "cmake -G Ninja -warn-uninitialized /path/to/hello\_world"...
4. Warn about uninitialized values.
5. — Found Git: /usr/bin/git (found version "2.17.0")
6. — Building empty aws\_iot component due to configuration
7. — Component names: ...
8. — Component paths: ...
9. ... (more lines of build system output)
10. [527/527] Generating hello-world.bin
11. esptool.py v2.3.1
12. Project build complete. To flash, run this command:
13. ../../components/esptool\_py/esptool/esptool.py -p (PORT) -b 921600 write\_flash -flash\_mode dio
14. -flash\_size detect -flash\_freq 40m 0x10000 build/hello-world.bin build 0x1000
15. build/bootloader/bootloader.bin 0x8000 build/partition\_table/partition-table.bin
16. or run 'idf.py -p PORT flash'

If there are no errors, the build will finish by generating the firmware binary .bin file.

## 2.4.5 Flash onto the Device

Flash the binaries that you just built onto your ESP32-C3-MINI-1U module by running:

1. [idf.py](#) -p PORT [-b BAUD] flash

Replace PORT with your module's serial port name from Step: Connect Your Device.

You can also change the flasher baud rate by replacing BAUD with the baud rate you need. The default baud rate is 460800.

For more information on idf.py arguments, see [idf.py](#).

### Note:

The option 'flash' automatically builds and flashes the project, so running 'idf.py build' is not necessary.

1. ...

```
esptool.py --chip esp32c3 -p /dev/ttyUSB0 -b 460800 --before=default_reset --after=hard_reset write_flash --flash_mode dio --flash_freq 80m --flash_size 2MB 0x8000 partition_table/partition-table.bin 0x0bootloader/bootloader.bin 0x10000 hello-world.bin
```

2. esptool.py v3.0

3. Serial port /dev/ttyUSB0

4. Connecting....

5. Chip is ESP32-C3

6. Features: Wi-Fi

7. Crystal is 40MHz

8. MAC: 7c:df:a1:40:02:a4

9. Uploading stub...

10. Running stub...

11. Stub running...

12. Changing baud rate to 460800

13. Changed.

14. Configuring flash size...

15. Compressed 3072 bytes to 103...

16. Writing at 0x00008000... (100 %)

17. Wrote 3072 bytes (103 compressed) at 0x00008000 in 0.0 seconds (effective 4238.1

18. kbit/s)...

19. Hash of data verified.

20. Compressed 18960 bytes to 11311...

21. Writing at 0x00000000... (100 %)

22. Wrote 18960 bytes (11311 compressed) at 0x00000000 in 0.3 seconds (effective 584.9 kbit/s)...

23. Hash of data verified.

24. Compressed 145520 bytes to 71984...

25. Writing at 0x00010000... (20 %)

26. Writing at 0x00014000... (40 %)

27. Writing at 0x00018000... (60 %)

28. Writing at 0x0001c000... (80 %)

29. Writing at 0x00020000... (100 %)
30. Wrote 145520 bytes (71984 compressed) at 0x00010000 in 2.3 seconds (effective 504.4 kbit/s)...
31. Hash of data verified.
32. Leaving...
33. Hard resetting via RTS pin...
34. Done

If everything goes well, the “hello\_world” application starts running after you remove the jumper on IO0 and GND, and re-power up the testing board.

#### 2.4.6 Monitor

To check if “hello\_world” is indeed running, type ‘idf.py -p PORT monitor’ (Do not forget to replace PORT with your serial port name).

This command launches the IDF Monitor application:

1. \$ idf.py -p /dev/ttyUSB0 monitor
2. Running idf\_monitor in directory [...]esp/hello\_world/build
3. Executing "python [...]esp-idf/tools/idf\_monitor.py -b 115200 [...]esp/hello\_world/build /hello-world.elf"...
4. — idf\_monitor on /dev/ttyUSB0 115200 —
5. — Quit: Ctrl+] | Menu: Ctrl+T | Help: Ctrl+T followed by Ctrl+H — ets Jun 8 2016 00:22:57
6. rst:0x1 (POWERON\_RESET),boot:0x13 (SPI\_FAST\_FLASH\_BOOT)
7. ets Jun 8 2016 00:22:57
8. ...

After startup and diagnostic logs scroll up, you should see “Hello world!” printed out by the application.

1. ...
2. Hello, world!
3. Restarting in 10 seconds...
4. This is an esp32c3 chip with 1 CPU core, WiFi/BLE, 4MB external flash
5. Restarting in 9 seconds...
6. Restarting in 8 seconds...
7. Restarting in 7 seconds...

To exit the IDF monitor use the shortcut Ctrl+].

That’s all that you need to get started with the ESP32-C3-MINI-1U module! Now you are ready to try some other [examples](#) in ESP-IDF or go right to developing your own applications.

## U.S. FCC Statement

The device complies with KDB 996369 D03 OEM Manual v01. Below are integration instructions for host product manufacturers according to the KDB 996369 D03 OEM Manual v01.

### List of Applicable FCC Rules

FCC Part 15 Subpart C 15.247 & 15.209

### **Specific Operational Use Conditions**

The module has WiFi, BR, EDR, and BLE functions.

- Operation Frequency:
  - WiFi: 2412 ~ 2462 MHz
  - Bluetooth: 2402 ~ 2480 MHz
- Number of Channels:
  - WiFi: 12
  - Bluetooth: 40
- Modulation:
  - WiFi: DSSS; OFDM
  - Bluetooth: GFSK;  $\pi/4$  DQPSK; 8 DPSK
- Type: External antenna connector
- Gain: 2.33 dBi Max

The module can be used for IoT applications with a maximum 2.33 dBi antenna. The host manufacturer installing this module into their product must ensure that the final composite product complies with the FCC requirements by a technical assessment or evaluation of the FCC rules, including the transmitter operation. The host manufacturer has to be aware not to provide information to the end-user regarding how to install or remove this RF module in the user's manual of the end product which integrates this module. The end-user manual shall include all required regulatory information/warning as shown in this manual.

### **Limited Module Procedures**

Not applicable. The module is a single module and complies with the requirement of FCC Part 15.212.

### **Trace Antenna Designs**

Not applicable. The module has its own antenna and does not need a host's printed board microstrip trace antenna, etc.

### **RF Exposure Considerations**

The module must be installed in the host equipment such that at least 20cm is maintained between the antenna and the users' body; and if the RF exposure statement or module layout is changed, then the host product manufacturer is required to take responsibility for the module through a change in FCC ID or new application. The FCC ID of the module cannot be used on the final product. In these circumstances, the host manufacturer will be responsible for re-evaluating the end product (including the transmitter) and obtaining a separate FCC authorization.

### **Antennas**

**Antenna specification is as follows:**

- Type: External antenna connector
- Gain: 2.33 dBi

**This device is intended only for host manufacturers under the following conditions:**

- The transmitter module may not be co-located with any other transmitter or antenna.
- The module shall be only used with the external antenna(s) that has been originally tested and certified with this module.
- The antenna must be either permanently attached or employ a 'unique' antenna coupler.

As long as the conditions above are met, further transmitter tests will not be required. However, the host manufacturer is still responsible for testing their end-product for any additional compliance requirements required with this module installed (for example, digital device emissions, PC peripheral requirements, etc.).

### **Label and Compliance Information**

Host product manufacturers need to provide a physical or e-label stating “Contains FCC ID: 2AC7Z-ESPC3MINII” with their finished product.

### **Information on test modes and additional testing requirements**

- Operation Frequency:
  - WiFi: 2412 ~ 2462 MHz
  - Bluetooth: 2402 ~ 2480 MHz
- Number of Channels:
  - WiFi: 12
  - Bluetooth: 40
- Modulation:
  - WiFi: DSSS; OFDM
  - Bluetooth: GFSK;  $\pi/4$  DQPSK; 8 DPSK

The host manufacturer must perform tests of radiated and conducted emission and spurious emission, etc., according to the actual test modes for a stand-alone modular transmitter in a host, as well as for multiple simultaneously transmitting modules or other transmitters in a host product. Only when all the test results of test modes comply with FCC requirements, then the end product can be sold legally.

### **Additional testing, Part 15 Subpart B compliant**

The modular transmitter is only FCC authorized for FCC Part 15 Subpart C 15.247 & 15.209 and the host product manufacturer is responsible for compliance to any other FCC rules that apply to the host not covered by the modular transmitter grant of certification. If the grantee markets their product as being Part 15 Subpart B compliant (when it also contains unintentional-radiator digital circuitry), then the grantee shall provide a notice stating that the final host product still requires Part 15 Subpart B compliance testing with the modular transmitter installed.

This equipment has been tested and found to comply with the limits for a Class B digital device, pursuant to Part 15 of the FCC Rules. These limits are designed to provide reasonable protection against harmful interference in a residential installation. This equipment generates, uses, and can radiate radio frequency energy and, if not installed

and used in accordance with the instructions, may cause harmful interference to radio communications.

However, there is no guarantee that interference will not occur in a particular installation. If this equipment does cause harmful interference to radio or television reception, which can be determined by turning the equipment off and on, the user is encouraged to try to correct the interference by one of the following measures:

- Reorient or relocate the receiving antenna.
- Increase the separation between the equipment and receiver.
- Connect the equipment into an outlet on a circuit different from that to which the receiver is connected.
- Consult the dealer or an experienced radio/TV technician for help.

**This device complies with Part 15 of the FCC Rules. Operation is subject to the following two conditions:**

- This device may not cause harmful interference.

- This device must accept any interference received, including interference that may cause undesired operation.

Any changes or modifications not expressly approved by the party responsible for compliance could void the user's authority to operate the equipment.

This equipment complies with FCC RF radiation exposure limits set forth for an uncontrolled environment. This device and its antenna must not be co-located or operating in conjunction with any other antenna or transmitter. The antennas used for this transmitter must be installed to provide a separation distance of at least 20 cm from all persons and must not be co-located or operating in conjunction with any other antenna or transmitter.

## **OEM Integration Instructions**

This device is intended only for OEM integrators under the following conditions:

- The transmitter module may not be co-located with any other transmitter or antenna.
- The module shall be only used with the external antenna(s) that has been originally tested and certified with this module.

As long as the conditions above are met, further transmitter tests will not be required. However, the OEM integrator is still responsible for testing their end-product for any additional compliance requirements required with this module installed (for example, digital device emissions, PC peripheral requirements, etc.).

## **Validity of Using the Module Certification**

In the event that these conditions cannot be met (for example certain laptop configurations or co-location with another transmitter), then the FCC authorization for this module in combination with the host equipment is no longer considered valid and the FCC ID of the module cannot be used on the final product. In these circumstances, the OEM integrator will be responsible for re-evaluating the end product (including the transmitter) and obtaining a separate FCC authorization.

## **End Product Labeling**

The final end product must be labeled in a visible area with the following: "Contains Transmitter Module FCC ID: 2AC7Z-ESPC3MINII".4 IC Statement

## **IC Statement**

This device complies with Industry Canada's license-exempt RSS. Operation is subject to the following two conditions:

- This device may not cause interference; and
- This device must accept any interference, including interference that may cause undesired operation of the device.

## **Radiation Exposure Statement**

This equipment complies with IC radiation exposure limits set forth for an uncontrolled environment. This equipment should be installed and operated with a minimum distance of 20 cm between the radiator and your body.

## **RSS247 Section 6.4 (5)**

The device could automatically discontinue transmission in case of the absence of information to transmit or operational failure. Note that this is not intended to prohibit transmission of control or signaling information or the use of repetitive codes where required by the technology.

**This device is intended only for OEM integrators under the following conditions (For module device use):**

- The antenna must be installed such that 20 cm is maintained between the antenna and users, and
- The transmitter module may not be co-located with any other transmitter or antenna.

As long as the 2 conditions above are met, further transmitter tests will not be required. However, the OEM integrator is still responsible for testing their end-product for any additional compliance requirements required with this module installed.

**IMPORTANT NOTE:**

In the event that these conditions can not be met (for example certain laptop configurations or colocation with another transmitter), then the Canada authorization is no longer considered valid and the IC ID can not be used on the final product. In these circumstances, the OEM integrator will be responsible for re-evaluating the end product (including the transmitter) and obtaining a separate Canada authorization.

**End Product Labeling**

This transmitter module is authorized only for use in devices where the antenna may be installed such that 20 cm may be maintained between the antenna and users. The final end product must be labeled in a visible area with the following: "Contains IC: 21098-ESPC3MINII".

**Manual Information to the End-User**

The OEM integrator has to be aware not to provide information to the end-user regarding how to install or remove this RF module in the user's manual of the end product which integrates this module. The end-user manual shall include all required regulatory information/warning as shown in this manual.

**Learning Resources**

**5.1 MustRead Documents**

**Please familiarize yourself with the following documents:**

- **ESP32-C3 Series Datasheet**

This is an introduction to the specifications of the ESP32-C3 hardware, including an overview, pin definitions, functional description, a peripheral interface, electrical characteristics, etc.

- **ESP-IDF Programming Guide**

Extensive documentation for the ESP-IDF development framework, ranging from hardware guides to API reference.

- **ESP32-C3 Technical Reference Manual**

Detailed information on how to use the ESP32-C3 memory and peripherals.

**5.2 Important Resources**

Here are the important ESP32-C3-related resources.

- [ESP32 BBS](#)

Engineer-to-Engineer (E2E) Community for Espressif products where you can post questions, share knowledge, explore ideas, and help solve problems with fellow engineers.

**Revision History**



| Date       | Version | Release notes       |
|------------|---------|---------------------|
| 2022-04-28 | v0.1    | Preliminary release |



[www.espressif.com](http://www.espressif.com)

#### Disclaimer and Copyright Notice

Information in this document, including URL references, is subject to change without notice.

ALL THIRD-PARTY INFORMATION IN THIS DOCUMENT IS PROVIDED AS-IS WITH NO WARRANTIES TO ITS AUTHENTICITY AND ACCURACY. NO WARRANTY IS PROVIDED TO THIS DOCUMENT FOR ITS MERCHANTABILITY, NON-INFRINGEMENT, OR FITNESS FOR ANY PARTICULAR PURPOSE, OR DOES ANY WARRANTY OTHERWISE ARISE OUT OF ANY PROPOSAL, SPECIFICATION, OR SAMPLE.

All liability, including liability for infringement of any proprietary rights, relating to the use of information in this document is disclaimed. No licenses express or implied, by estoppel or otherwise, to any intellectual property rights are granted herein.

The Wi-Fi Alliance Member logo is a trademark of the Wi-Fi Alliance. The Bluetooth logo is a registered trademark of Bluetooth SIG.


All trade names, trademarks, and registered trademarks mentioned in this document are the property of their respective owners and are hereby acknowledged.

**Copyright © 2022 Espressif Systems (Shanghai) Co., Ltd. All rights reserved.**









Pre-release v0.1  
Espressif Systems  
Copyright © 2022  
[www.espressif.com](http://www.espressif.com)

**Documents / Resources**

|   |  |
|---|--|
|  | <p><a href="#">ESPRESSIF ESP32-C3-Mini-1U General-Purpose Wi-Fi and Bluetooth LE Module</a> [pdf]</p> <p>User Manual</p> <p>ESPC3MINII, 2AC7Z-ESPC3MINII, 2AC7ZESPC3MINII, ESP32 -C3 -Mini-1U General-Purpose Wi-Fi and Bluetooth LE Module, ESP32 -C3 -Mini-1U, General-Purpose Wi-Fi and Bluetooth LE Module</p> |
|---|--|

## References

-  [Certificates | Espressif Systems](#)
-  [Subscribe | Espressif Systems](#)
-  [Wi-Fi & Bluetooth MCUs and AIoT Solutions | Espressif Systems](#)
-  [ESP32 Forum - Index page](#)
-  [Wi-Fi & Bluetooth MCUs and AIoT Solutions | Espressif Systems](#)
-  [Technical Documents | Espressif Systems](#)