



Contents [[hide](#)]

- [1 ESPRESSIF SYSTEMS ESP8684-WROOM-060 ESP32 C2 Module](#)
- [2 Product Specifications](#)
- [3 Product Usage Instructions](#)
 - [3.1 Get Started](#)
 - [3.2 Create Your First Project](#)
- [4 Module Overview](#)
 - [4.1 Features](#)
- [5 Pin Definitions](#)
- [6 Get Started](#)
 - [6.1 Set up Development Environment](#)
 - [6.2 Create Your First Project](#)
- [7 U.S. FCC Statement](#)
- [8 Related Documentation and Resources Related Documentation](#)
- [9 Disclaimer and Copyright Notice](#)
- [10 Frequently Asked Questions \(FAQ\)](#)
- [11 Documents / Resources](#)
 - [11.1 References](#)





Product Specifications

- **Model:** ESP8684-WROOM-06C
- **Wireless Connectivity:** Wi-Fi and Bluetooth LE
- **Mounting Options:** Reflow soldering or wave soldering
- **GPIOs:** 14 available in surface mount, 5 available in vertical mount
- **Antenna:** On-board PCB antenna

Product Usage Instructions

Get Started

What You Need

Ensure you have the ESP8684-WROOM-06C module, necessary development tools, and a compatible PCB board.

Hardware Connection

Connect the module to the PCB board following the pin layout as specified in the datasheet.

Set up Development Environment

1. **Install Prerequisites:** Install required software tools and libraries.
2. **Get ESP-IDF:** Download the ESP-IDF (Espressif IoT Development Framework).
3. **Set up Tools:** Configure development tools for programming.
4. **Set up Environment Variables:** Set necessary environment variables for the

development environment.

Create Your First Project

Start a Project

Create a new project in your development environment.

Connect Your Device

Establish a connection between your development environment and the ESP8684-WROOM-06C module.

Configure

Configure the project settings and parameters according to your requirements.

Build the Project

Compile the project to generate the firmware image.

Flash onto the Device

Flash the compiled firmware onto the ESP8684-WROOM-06C module.

Monitor

Monitor the device behavior and output for testing and debugging purposes.

Module Overview

Features

CPU and On-Chip Memory

- ESP8684H2 or ESP8684H4 embedded, 32-bit RISC-V single-core processor, up to 120 MHz
- 576 KB ROM
- 272 KB SRAM (16 KB for cache)
- In-Package flash (see details in Table 1 ESP8684-WROOM-06C Series Comparison)
- Access to flash is accelerated by cache
- Supports flash in-circuit Programming (ICP)

Wi-Fi

- IEEE 802.11 b/g/n-compliant
- Center frequency range of the operating channel:
2412 ~ 2462 MHz
- Supports 20 MHz bandwidth in the 2.4 GHz band
- 1T1R mode with data rate up to 72.2 Mbps
- Wi-Fi Multimedia (WMM)
- TX/RX A-MPDU, TX/RX A-MSDU
- Immediate Block ACK
- Fragmentation and defragmentation
- Transmit opportunity (TXOP)
- Automatic Beacon monitoring (hardware TSF)
- 3 × virtual Wi-Fi interfaces
- Simultaneous support for Infrastructure BSS in Station mode, SoftAP mode, Station + SoftAP mode, and promiscuous mode

Note that when the ESP8684 series scans in Station mode, the SoftAP channel will change along with the Station channel.

Bluetooth®

- **Bluetooth LE:** Bluetooth 5.3 certified
- High power mode (20 dBm)
- **Speed:** 125 kbps, 500 kbps, 1 Mbps, 2 Mbps
- Advertising extensions
- Multiple advertisement sets
- Channel selection algorithm #2
- Internal co-existence mechanism between Wi-Fi and Bluetooth to share the same antenna

Peripherals

GPIO, SPI, UART, I2C, LED PWM controller, general DMA controller, temperature sensor, SAR ADC, timers, and watchdog

Note:

* Please refer to the ESP8684 Series Datasheet for detailed information about the module peripherals.

Integrated Components on Module

26 MHz crystal oscillator

Antenna Options

On-board PCB antenna

Operating Conditions

- **Operating voltage/Power supply:** 3.0 ~ 3.6 V
- **Operating ambient temperature:** -40 ~ 105 °C

Certification

- **Bluetooth certification:** BQB
- **Green certification:** RoHS/REACH

Test

HTOL/HTSL/uHAST/TCT/ESD/Latch-up

Description

- ESP8684-WROOM-06C is a powerful, generic Wi-Fi and Bluetooth LE module. This module is an ideal choice for smart homes, industrial automation, health care, consumer electronics, etc.
- ESP8684-WROOM-06C can be mounted onto the surface of a PCB board via reflow soldering or vertically soldered to a PCB board via wave soldering. When surface mounted, the module has 14 available GPIOs; when vertically soldered, the module has 5 available GPIOs.
- ESP8684-WROOM-06C comes with an on-board PCB antenna.
- The series comparison for ESP8684-WROOM-06C is as follows:

Ordering Code	In-Package flash	Ambient Temp.1 (°C)	Size (mm)
ESP8684-WROOM-06C-H 2	2 MB	-40 ~105	15.8 × 20.3 × 2.7
ESP8684-WROOM-06C-H 4	4 MB		

Ambient temperature specifies the recommended temperature range of the environment immediately outside the Espressif module.

- The ESP8684H2 chip and the ESP8684H4 chip fall into the same category, namely the ESP8684 chip series. The
- ESP8684 series of chips has a 32-bit RISC-V single-core processor. They integrate a rich set of peripherals, including UART, I2C, LED PWM controller, general DMA controller, temperature sensor, SAR ADC, etc.

Note:

* For more information on ESP8684 chip, please refer to ESP8684 Series Datasheet.

Pin Definitions

Pin Layout

The pin diagram below shows the approximate location of pins on the module.

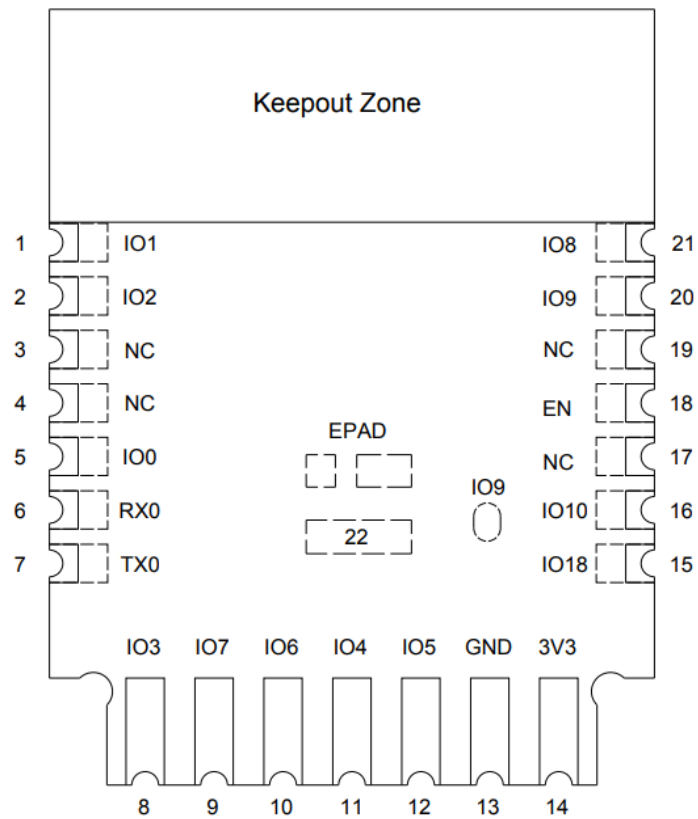


Figure 1: Pin Layout (Top View)

Pin Description

- The module has 22 pins. See pin definitions in Table 2, Pin Definitions.
- For peripheral pin configurations, please refer to the ESP8684 Series Datasheet.

Name	No.	Type	Function
IO1	1	I/O/T	GPIO1, ADC1_CH1
IO2	2	I/O/T	GPIO2, ADC1_CH2, FSPIQ
NC	3	—	NC
NC	4	—	NC
IO0	5	I/O/T	GPIO0, ADC1_CH0
RX0	6	I/O/T	GPIO19, U0RXD
TX0	7	I/O/T	GPIO20, U0TXD

IO3	8	I/O/T	GPIO3, ADC1_CH3, LED PWM
IO7	9	I/O/T	GPIO7, FSPID, MTDO, LED PWM
IO6	10	I/O/T	GPIO6, FSPICLK, MTCK, LED PWM
IO4	11	I/O/T	GPIO4, ADC1_CH4, FSPIHD, MTMS, LED PWM
IO5	12	I/O/T	GPIO5, FSPIWP, MTDI, LED PWM
GND	13	P	Ground
3V3	14	P	Power supply
IO18	15	I/O/T	GPIO18
IO10	16	I/O/T	GPIO10, FSPICS0
NC	17	—	NC
EN	18	I	High: One enables the chip. Low: off, The chip powers off. Default: internally pulled up.
NC	19	—	NC
IO9 2	20	I/O/T	GPIO9
IO8	21	I/O/T	GPIO8
EPA D	22	P	Ground

1. P: power supply; I: input; O: output; T: high impedance.
2. This pin can be used as a test point.

Note:

IO0, IO1, IO3, and IO5/MTDI pins have low-level glitches during chip power-up.

See details in the section General Purpose Input / Output Interface (GPIO) of the

Get Started

What You Need

To develop applications for the module, you need:

- 1 x ESP8684-WROOM-06C
- 1 x Espressif RF testing board
- 1 x USB-to-Serial board
- 1 x Micro-USB cable
- 1 x PC running Linux

In this user guide, we take the Linux operating system as an example. For more information about the configuration on Windows and macOS, please refer to the ESP-IDF Programming Guide.

Hardware Connection

1. Solder the ESP8684-WROOM-06C module to the RF testing board as shown in Figure 2.

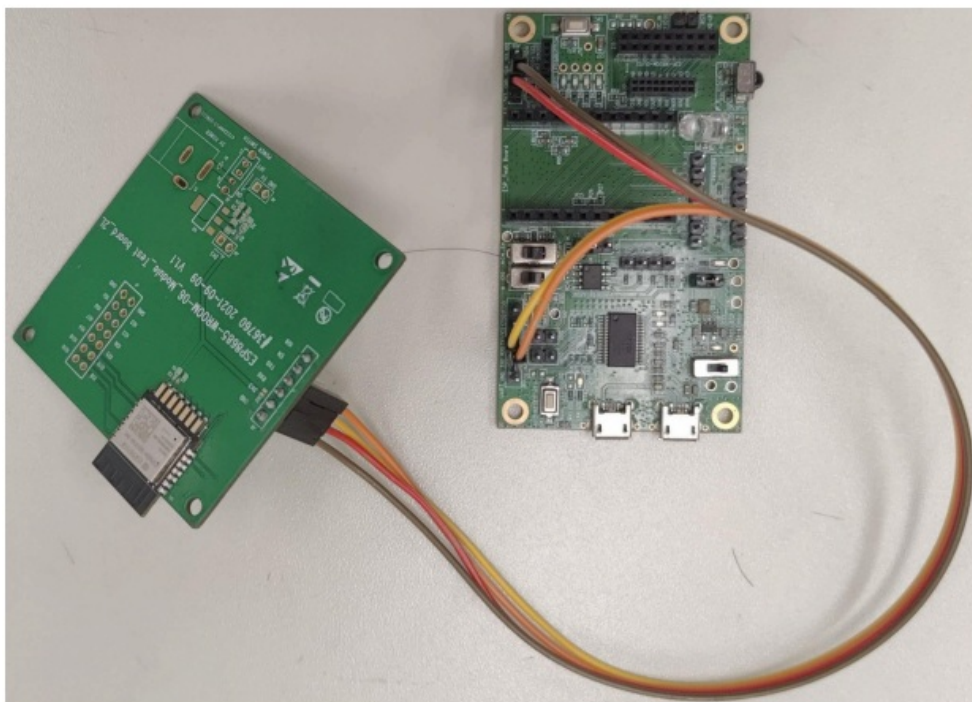


Figure 2: Hardware Connection

2. Connect the RF testing board to the USB-to-Serial board via TXD, RXD, and GND.

3. Connect the USB-to-Serial board to the PC.
4. Connect the RF testing board to the PC or a power adapter to enable a 5 V power supply via the Micro-USB cable.
5. During download, connect IO0 to GND via a jumper. Then, turn "ON" the testing board.
6. Download firmware into the flash. For details, see the sections below.
7. After download, remove the jumper on IO0 and GND.
8. Power up the RF testing board again. The module will switch to working mode. The chip will read programs from flash upon initialization.

Note:

IO0 is internally logic high. If IO0 is set to pull-up, the Boot mode is selected. If this pin is pulled down or left floating, the Download mode is selected. For more information on ESP8684-WROOM-06C, please refer to the ESP8684 Series Datasheet.

Set up Development Environment

The Espressif IoT Development Framework (ESP-IDF for short) is a framework for developing applications based on the Espressif ESP32. Users can develop applications with ESP8684 in Windows/Linux/macOS based on ESP-IDF. Here we take the Linux operating system as an example.

Install Prerequisites

To compile with ESP-IDF, you need to get the following packages:

- **CentOS 7 & 8:**

```
1 sudo yum -y update && sudo yum install git wget flex bison gperf python3
python3-pip
2 python3-setuptools cmake ninja-build ccache dfu-util libusbx
```

- **Ubuntu and Debian:**

```
1 sudo apt-get install git wget flex bison gperf python3 python3-pip python3-
setuptools
2 cmake ninja-build ccache libffi-dev libssl-dev dfu-util libusb-1.0-0
```

- **Arch:**

```
1 sudo pacman -S --needed gcc git make flex bison gperf python-pip cmake ninja
ccache
2 dfu-util libusb
```

Note:

- This guide uses the directory ~/esp on Linux as an installation folder for ESP-IDF.
- Keep in mind that ESP-IDF does not support spaces in paths.

Get ESP-IDF

- To build applications for the ESP8684-WROOM-06C module, you need the software libraries provided by Espressif in the ESP-IDF repository.
- To get ESP-IDF, create an installation directory (~/esp) to download ESP-IDF to and clone the repository with 'git clone':

```
1 mkdir -p ~/esp
2 cd ~/esp
3 git clone --recursive https://github.com/espressif/esp-idf.git
```

- ESP-IDF will be downloaded into ~/esp/esp-idf. Consult ESP-IDF Versions for information about which ESP-IDF version to use in a given situation.

Set up Tools

Aside from the ESP-IDF, you also need to install the tools used by ESP-IDF, such as the compiler, debugger, Python packages, etc. ESP-IDF provides a script named 'install.sh' to help set up the tools in one go.

```
1 cd ~/esp/esp-idf
2 ./install.sh
```

Set up Environment Variables

The installed tools have not yet been added to the PATH environment variable. To make the tools usable from the command line, some environment variables must be set. ESP-IDF provides another script, 'export.sh', which does that. In the terminal where you are going to use ESP-IDF, run:

```
1 . $HOME/esp/esp-idf/export.sh
```

Now everything is ready, you can build your first project on the ESP8684-WROOM-06C module.

Create Your First Project

Start a Project

- Now you are ready to prepare your application for the ESP8684-WROOM-06C module. You can start with the `get-started/hello_world` project from the `examples` directory in ESP-IDF.
- Copy `get-started/hello_world` to `~/esp` directory:

```
1 cd ~/esp
2 cp -r $IDF_PATH/examples/get-started/hello_world .
```

- There is a range of example projects in the `examples` directory in ESP-IDF. You can copy any project in the same way as presented above and run it. It is also possible to build examples in place, without copying them first.

Connect Your Device

Now connect your module to the computer and check under which serial port the module is visible. Serial ports in Linux start with `/dev/tty` in their names. Run the command below two times, first with the board unplugged, then with it plugged in. The port that appears the second time is the one you need:

```
1 ls /dev/tty*
```

Note:

Keep the port name handy as you will need it in the next steps.

Configure

- Navigate to your `'hello_world'` directory from Step 3.4.1. Start a Project, set ESP8684 chip as the target, and run the project configuration utility `'menuconfig'`.

```
1 cd ~/esp/hello_world
2 idf.py set-target esp8684
3 idf.py menuconfig
```

- Setting the target with `'idf.py set-target ESP8684'` should be done once, after opening a new project. If the project contains some existing builds and configurations, they will be cleared and initialized. The target may be saved in an environment variable to skip

this step all. See [Selecting the Target](#) for additional information.

- If the previous steps have been done correctly, the following menu appears:

```
(Top)
Espressif IoT Development Framework Configuration
SDK tool configuration --->
Build type --->
Application manager --->
Bootloader config --->
Security features --->
Serial flasher config --->
Partition Table --->
Compiler options --->
Component config --->
Compatibility options --->

[Space/Enter] Toggle/enter  [ESC] Leave menu          [S] Save
[O] Load                   [?] Symbol info          [/] Jump to symbol
[F] Toggle show-help mode  [C] Toggle show-name mode [A] Toggle show-all mode
[Q] Quit (prompts for save) [D] Save minimal config (advanced)
```

Figure 3: Project Configuration - Home Window

- You are using this menu to set up project-specific variables, e.g., Wi-Fi network name and password, the processor speed, etc. Setting up the project with menuconfig may be skipped for “hello_world”. This example will run with the default configuration.
- The colors of the menu could be different in your terminal. You can change the appearance with the option ‘`--style`’. Please run ‘`idf.py menuconfig --help`’ for further information.

Build the Project

- Build the project by running:

```
1 idf.py build
```

- This command will compile the application and all ESP-IDF components, then it will generate the bootloader, partition table, and application binaries.

```
1 $ idf.py build
2 Running cmake in directory /path/to/hello_world/build
3 Executing "cmake -G Ninja --warn-uninitialized /path/to/hello_world"...
```

```

4 Warn about uninitialized values.
5 -- Found Git: /usr/bin/git (found version "2.17.0")
6 -- Building empty aws_iot component due to configuration
7 -- Component names: ...
8 -- Component paths: ...
9
10 ... (more lines of build system output)
11
12 [527/527] Generating hello_world.bin
13 esptool.py v2.3.1
14
15 Project build complete. To flash, run this command:
16 ../../../../components/esptool_py/esptool/esptool.py -p (PORT) -b 921600
17 write_flash --flash_mode dio --flash_size detect --flash_freq 40m
18 0x10000 build/hello_world.bin build 0x1000 build/bootloader/bootloader.bin 0x8000
19 build/partition_table/partition-table.bin
20 or run 'idf.py -p PORT flash'

```

- If there are no errors, the build will finish by generating the firmware binary .bin file.

Flash onto the Device

- Flash the binaries that you just built onto your module by running:

```

1 idf.py -p PORT [-b BAUD] flash

```

- Replace PORT with your ESP8684 board's serial port name from Step: Connect Your Device.
- You can also change the flash baud rate by replacing BAUD with the baud rate you need. The default baud rate is 460800.
- For more information on idf.py arguments, see idf.py.

Note:

The option 'flash' automatically builds and flashes the project, so running 'idf.py build' is not necessary.

- When flashing, you will see the output log similar to the following:

```

1  ...
2  esptool.py esp8684 -p /dev/ttyUSB0 -b 460800 --before=default_reset --after=hard_
   reset
3  write_flash --flash_mode dio --flash_freq 80m --flash_size 2MB 0x0 bootloader/
   bootloader.bin
4  0x10000 hello_world.bin 0x8000 partition_table/partition-table.bin
5  esptool.py v3.2-dev
6  Serial port /dev/ttyUSB0
7  Connecting....
8  Chip is ESP8684
9  Features: WiFi, BLE
10 Crystal is 40MHz
11 MAC: 7c:df:a1:e0:00:64
12 Uploading stub...

13 Running stub...
14 Stub running...
15 Changing baud rate to 460800
16 Changed.
17 Configuring flash size...
18 Flash will be erased from 0x00000000 to 0x00004fff...
19 Flash will be erased from 0x00010000 to 0x00039fff...
20 Flash will be erased from 0x00008000 to 0x00008fff...
21 Compressed 18896 bytes to 11758...
22 Writing at 0x00000000... (100 %)
23 Wrote 18896 bytes (11758 compressed) at 0x00000000 in 0.5 seconds (effective 279.9
   kbit/s)...
24 Hash of data verified.
25 Compressed 168208 bytes to 88178...
26 Writing at 0x00010000... (16 %)
27 Writing at 0x0001a80f... (33 %)
28 Writing at 0x000201f1... (50 %)
29 Writing at 0x00025dcf... (66 %)
30 Writing at 0x0002d0be... (83 %)
31 Writing at 0x00036c07... (100 %)
32 Wrote 168208 bytes (88178 compressed) at 0x00010000 in 2.4 seconds (effective 569.2
   kbit/s)...
33 Hash of data verified.
34 Compressed 3072 bytes to 103...
35 Writing at 0x00008000... (100 %)
36 Wrote 3072 bytes (103 compressed) at 0x00008000 in 0.1 seconds (effective 478.9 kbit/
   s)...
37 Hash of data verified.
38
39 Leaving...
40 Hard resetting via RTS pin...
41 Done

```

- If there are no issues by the end of the flash process, the board will reboot and start up the “hello_world” application.

Monitor

- To check if “hello_world” is indeed running, type ‘idf.py -p PORT monitor’ (Do not forget to replace PORT with your serial port name).
- This command launches the IDF Monitor application:

```

1 $ idf.py -p /dev/ttyUSB0 monitor
2 Running idf_monitor in directory [...]esp/hello_world/build
3 Executing "python [...]esp-idf/tools/idf_monitor.py -b 115200
4 [...]esp/hello_world/build/hello-world.elf"...
5 --- idf_monitor on /dev/ttyUSB0 115200 ---
6 --- Quit: Ctrl+] | Menu: Ctrl+T | Help: Ctrl+T followed by Ctrl+H ---
7 ets Jun  8 2016 00:22:57
8
9 rst:0x1 (POWERON_RESET),boot:0x13 (SPI_FAST_FLASH_BOOT)
10 ets Jun  8 2016 00:22:57
11 ...

```

- After startup and diagnostic logs scroll up, you should see “Hello world!” printed out by the application.

```

1 ...
2 Hello world!
3 Restarting in 10 seconds...
4 This is esp8684 chip with 1 CPU core(s), This is esp8684 chip with 1 CPU core(s),
   WiFi/BLE,
5 silicon revision 0, 2MB external flash
6 Minimum free heap size: 390684 bytes
7 Restarting in 9 seconds...
8 Restarting in 8 seconds...
9 Restarting in 7 seconds...

```

- To exit IDF monitor, use the shortcut Ctrl+].
- That’s all you need to get started with the ESP8684-WROOM-06C module! Now you are ready to try some other examples in ESP-IDF, or go right to develop your applications.

U.S. FCC Statement

The device complies with KDB 996369 D03 OEM Manual v01. Below are integration instructions for host product manufacturers according to the KDB 996369 D03 OEM Manual v01.

List of Applicable FCC Rules

FCC Part 15 Subpart C 15.247

Specific Operational Use Conditions

The module has WiFi and BLE functions.

- **Operation Frequency:**

- **WiFi:** 2412 ~ 2462 MHz
- **Bluetooth:** 2402 ~ 2480 MHz

- **Number of Channel:**

- **WiFi:** 11
- **Bluetooth:** 40

- **Modulation:**

- **WiFi:** DSSS; OFDM
- **Bluetooth:** GFSK;

- **Type:** On-board PCB Antenna

- **Gain:** 2.7 dBi Max

The module can be used for IoT applications with a maximum 2.7 dBi antenna. The host manufacturer installing this module into their product must ensure that the final composite product complies with the FCC requirements by a technical assessment or evaluation of the FCC rules, including the transmitter operation. The host manufacturer has to be aware not to provide information to the end user regarding how to install or remove this RF module in the user's manual of the end product that integrates this module. The end user manual shall include all required regulatory information/warnings as shown in this manual.

Limited Module Procedures

Not applicable. The module is a single module and complies with the requirements of FCC Part 15.212.

Trace Antenna Designs

Not applicable. The module has its antenna, and does not need a host's printed board microstrip trace antenna, etc.

RF Exposure Considerations

The module must be installed in the host equipment such that at least 20cm is maintained between the antenna and users' body; and if RF exposure statement or

module layout is changed, then the host product manufacturer is required to take responsibility for the module through a change in the FCC ID or a new application. The FCC ID of the module cannot be used on the final product. In these circumstances, the host manufacturer will be responsible for re-evaluating the end product (including the transmitter) and obtaining a separate FCC authorization.

Antennas

- Antenna specifications are as follows:
 - **Type:** PCB Antenna
 - **Gain:** 2.7 dBi
- This device is intended only for host manufacturers under the following conditions:
 - The transmitter module may not be co-located with any other transmitter or antenna.
 - The module shall be used only with the external antenna(s) that have been originally tested and certified with this module.
 - The antenna must be either permanently attached or employ a 'unique' antenna coupler.
- As long as the conditions above are met, further transmitter tests will not be required. However, the host manufacturer is still responsible for testing their end-product for any additional compliance requirements required with this module installed (for example, digital device emissions, PC peripheral requirements, etc.).

Label and Compliance Information

Host product manufacturers need to provide a physical or e-label stating "Contains FCC ID: 2AC7Z-ESP868406C" with their finished product.

Information on test modes and additional testing requirements

- **Operation Frequency:**
 - **WiFi:** 2412 ~ 2462 MHz
 - **Bluetooth:** 2402 ~ 2480 MHz
- **Number of Channel:**
 - **WiFi:** 11
 - **Bluetooth:** 40

- **Modulation:**

- **WiFi:** DSSS; OFDM
- **Bluetooth:** GFSK;

Host manufacturers must perform tests of radiated and conducted emission and spurious emission, etc., according to the actual test modes for a stand-alone modular transmitter in a host, as well as for multiple simultaneously transmitting modules or other transmitters in a host product. Only when all the test results of test modes comply with FCC requirements, then the end product be sold legally.

Additional testing, Part 15 Subpart B compliant

- The modular transmitter is only FCC authorized for FCC Part 15 Subpart C 15.247, and the host product manufacturer is responsible for compliance with any other FCC rules that apply to the host not covered by the modular transmitter grant of certification. If the grantee markets their product as being Part 15 Subpart B compliant (when it also contains unintentional-radiator digital circuitry), then the grantee shall provide a notice stating that the final host product still requires Part 15 Subpart B compliance testing with the modular transmitter installed.
- This equipment has been tested and found to comply with the limits for a Class B digital device, under Part 15 of the FCC Rules. These limits are designed to provide reasonable protection against harmful interference in a residential installation. This equipment generates, uses, and can radiate radio frequency energy and, if not installed and used according to the instructions, may cause harmful interference to radio communications.
- However, there is no guarantee that interference will not occur in a particular installation. If this equipment does cause harmful interference to radio or television reception, which can be determined by turning the equipment off and on, the user is encouraged to try to correct the interference by one of the following measures:
 - Reorient or relocate the receiving antenna.
 - Increase the separation between the equipment and receiver.
 - Connect the equipment to an outlet on a circuit different from that to which the receiver is connected.
 - Consult the dealer or an experienced radio/TV technician for help.
- This device complies with Part 15 of the FCC Rules. Operation is subject to the

following two conditions:

- This device may not cause harmful interference.
- This device must accept any interference received, including interference that may cause undesired operation.

Caution:

Any changes or modifications not expressly approved by the party responsible for compliance could void the user's authority to operate the equipment.

- This equipment complies with the FCC RF radiation exposure limits set forth for an uncontrolled environment. This device and its antenna must not be co-located or operating in conjunction with any other antenna or transmitter. The antennas used for this transmitter must be installed to provide a separation distance of at least 20 cm from all persons and must not be co-located or operating in conjunction with any other antenna or transmitter.

OEM Integration Instructions

This device is intended only for OEM integrators under the following conditions:

- The transmitter module may not be co-located with any other transmitter or antenna.
- The module shall be used only with an antenna that has been originally tested and certified with this module.
- As long as the conditions above are met, further transmitter tests will not be required. However, the OEM integrator is still responsible for testing their end-product for any additional compliance requirements required with this module installed (for example, digital device emissions, PC peripheral requirements, etc.).

Validity of Using the Module Certification

If these conditions cannot be met (for example, certain laptop configurations or co-location with another transmitter), then the FCC authorization for this module in combination with the host equipment is no longer considered valid, and the FCC ID of the module cannot be used on the final product. In these circumstances, the OEM integrator will be responsible for re-evaluating the end product (including the transmitter) and obtaining a separate FCC authorization.

End Product Labeling

The end product must be labeled in a visible area with the following: "Contains

Related Documentation and Resources Related Documentation

- **ESP8684 Series Datasheet** – Specifications of the ESP8684 hardware.
- **ESP8684 Technical Reference Manual** – Detailed information on how to use the ESP8684 memory and peripherals.
- **ESP8684 Hardware Design Guidelines** – Guidelines on how to integrate the ESP8684 into your hardware product.
- Certificates <https://espressif.com/en/support/documents/certificates>
- **ESP8684 Product/Process Change Notifications (PCN)**
<https://espressif.com/en/support/documents/pcns?keys=ESP8684>
- **Documentation Updates and Update Notification Subscription**
<https://espressif.com/en/support/download/documents>

Developer Zone

- ESP-IDF Programming Guide for ESP8684 – Extensive documentation for the ESP-IDF development framework.
- ESP-IDF and other development frameworks on GitHub.
<https://github.com/espressif>
- ESP32 BBS Forum – Engineer-to-Engineer (E2E) Community for Espressif products, where you can post questions, share knowledge, explore ideas, and help solve problems with fellow engineers.
<https://esp32.com/>
- The ESP Journal – Best Practices, Articles, and Notes from Espressif folks.
<https://blog.espressif.com/>
- See the tabs SDKs, Demos, Apps, Tools, and AT Firmware.
<https://espressif.com/en/support/download/sdks-demos>

Products

- **ESP8684 Series SoCs** – Browse through all ESP8684 SoCs.
<https://espressif.com/en/products/socs?id=ESP8684>
- **ESP8684 Series Modules** – Browse through all ESP8684-based modules.

<https://espressif.com/en/products/modules?id=ESP8684>

- **ESP8684 Series DevKits** – Browse through all ESP8684-based devkits.

<https://espressif.com/en/products/devkits?id=ESP8684>

- **ESP Product Selector** – Find an Espressif hardware product suitable for your needs by comparing or applying filters. <https://products.espressif.com/#/product-selector?language=en>

Contact Us

See the tabs Sales Questions, Technical Enquiries, Circuit Schematic & PCB Design Review, Get Samples (Online stores), Become Our Supplier, Comments & Suggestions.

<https://espressif.com/en/contact-us/sales-questions>

Disclaimer and Copyright Notice

- Information in this document, including URL references, is subject to change without notice.
- ALL THIRD-PARTY INFORMATION IN THIS DOCUMENT IS PROVIDED AS IS WITH NO WARRANTIES OF ITS AUTHENTICITY AND ACCURACY.
- NO WARRANTY IS PROVIDED TO THIS DOCUMENT FOR ITS MERCHANTABILITY, NONINFRINGEMENT, FITNESS FOR ANY PARTICULAR PURPOSE, NOR DOES ANY WARRANTY OTHERWISE ARISING OUT OF ANY PROPOSAL, SPECIFICATION, OR SAMPLE.
- All liability, including liability for infringement of any proprietary rights, relating to the use of information in this document is disclaimed. No licenses express or implied, by estoppel or otherwise, to any intellectual property rights are granted herein.
- The Wi-Fi Alliance Member logo is a trademark of the Wi-Fi Alliance. The Bluetooth logo is a registered trademark of Bluetooth SIG.
- All trade names, trademarks, and registered trademarks mentioned in this document are the property of their respective owners and are hereby acknowledged.

Frequently Asked Questions (FAQ)

- **Can I use both Wi-Fi and Bluetooth functionalities simultaneously on the ESP8684-WROOM-06C?**


Yes, the module supports both Wi-Fi and Bluetooth functionalities concurrently,

enabling various applications that require dual wireless capabilities.

- **What is the recommended ambient temperature range for operating the ESP8684-WROOM-06C?**

The recommended ambient temperature range for the module is specified in the datasheet and should be adhered to for optimal performance and longevity.

Documents / Resources

	ESPRESSIF SYSTEMS ESP8684-WROOM-060 ESP32 C2 Module [pdf] User Manual 2AC7Z-ESP868406C, 2AC7ZESP868406C, esp868406c, ESP8684-WROOM-060 ESP32 C2 Module, ESP8684-WROOM-060, ESP32 C2 Module, C2 Module
---	---

References

- [User Manual](#)

Espressif

Systems

2AC7Z-ESP868406C, 2AC7ZESP868406C, C2 Module, ESP32 C2 Module, ESP8684-WROOM-060, ESP8684-WROOM-060 ESP32 C2 Module, esp868406c, Espressif Systems

Leave a comment

Your email address will not be published. Required fields are marked *

Comment *

Name

Email

Website

☐ Save my name, email, and website in this browser for the next time I comment.

Post Comment

Search:

e.g. whirlpool wrf535swhz

Search

[Manuals+](#) | [Upload](#) | [Deep Search](#) | [Privacy Policy](#) | [@manuals.plus](#) | [YouTube](#)

This website is an independent publication and is neither affiliated with nor endorsed by any of the trademark owners. The "Bluetooth®" word mark and logos are registered trademarks owned by Bluetooth SIG, Inc. The "Wi-Fi®" word mark and logos are registered trademarks owned by the Wi-Fi Alliance. Any use of these marks on this website does not imply any affiliation with or endorsement.