

espiro
espiro Only Way
Lightweight
Stroller



espiro Only Way Lightweight Stroller User Manual

[Home](#) » [espiro](#) » espiro Only Way Lightweight Stroller User Manual 

Contents

- 1 [espiro Only Way Lightweight Stroller](#)
- 2 [FAQ](#)
- 3 [ASSEMBLY INSTRUCTIONS](#)
- 4 [CLEANING AND OPERATING](#)
- 5 [Documents / Resources](#)
 - 5.1 [References](#)

espiro

espiro Only Way Lightweight Stroller



FAQ

Q: Can I adjust the handle length of the stroller?

A: Yes, you can adjust the handle length by pressing the button on the handle and adjusting it to your desired height.

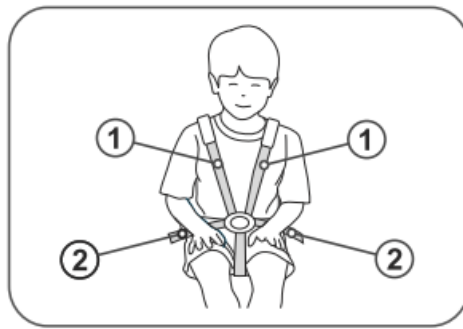
Q: How do I install the footmuff on the stroller?

A: To install the footmuff, insert it on the footrest, place it below the bumper bar, and fix it with snap fasteners to the belts in the upholstery.

Silica gel packets inside. Do not swallow. Discard after unwrapping the product.



ATTENTION! Correctly mounted shoulder straps (1) should be located slightly above the child's shoulders, and the hip straps (2) should tightly hold the child's pelvis. Straps cannot be twisted



DEAR PARENTS

Congratulations on your purchase of ONLY stroller manufactured by the company BABY DESIGN GROUP. Journey in this stroller will be safe, comfort and enjoyable.

Important

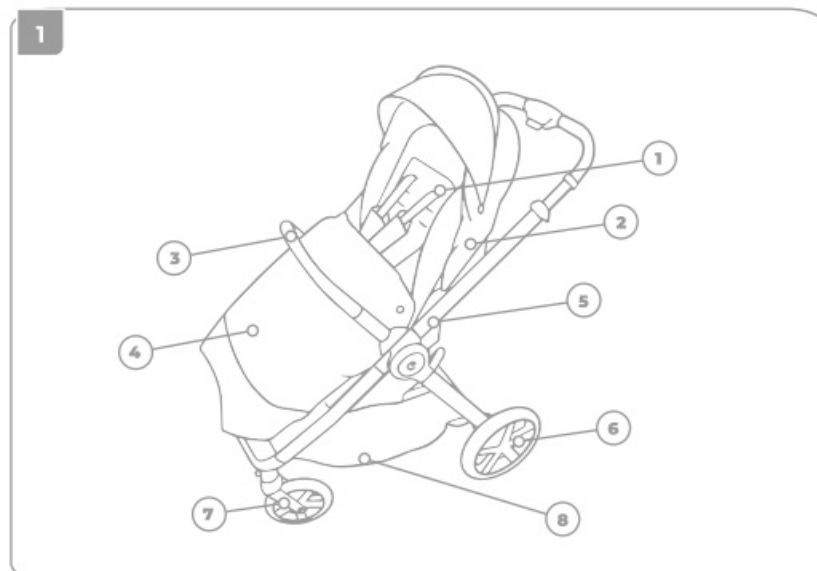
Read carefully and keep for future reference

ASSEMBLY INSTRUCTIONS

Your child's safety may be threatened if you do not follow these instructions!

1. ELEMENTS OF THE STROLLER

1. Seat
2. Canopy
3. Bumper bar
4. Footmuff
5. Frame
6. Rear wheel – 2 pcs
7. Front-wheel – 2 pcs,
8. Basket
9. Carrycot
10. Cover na carrycot
11. Bag



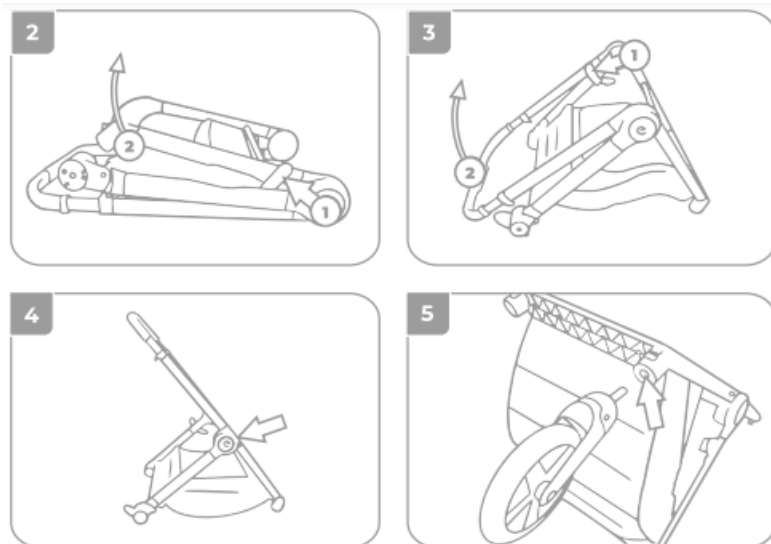
UNFOLDING THE STROLLER

2. Unlock the snap fastener of the locking mechanism located on the outside of the frame (1) and pull the handle up (2).
3. Unlock the snap fastener of the locking mechanism located on the inside of the frame (2) and unfold the stroller.
4. Make sure that the stroller is properly secured in place on both locks.

WHEELS

5. ASSEMBLY OF FRONT WHEELS

Insert front set of the wheel onto the hub until it is locked in place. Make sure the wheel is properly secured. Repeat on the other side.



6. ASSEMBLY OF THE REAR WHEELS

Insert the rear wheel onto the rear hub until it is locked in place. Make sure the wheel is properly secured. Repeat on the other side.

7. DISASSEMBLY OF THE FRONT WHEELS

Press the button of the locking mechanism (1) and simultaneously take the wheel off the hub (2).

8. DISASSEMBLY OF THE REAR WHEELS

Press the button of the locking mechanism (1) and simultaneously take the wheel off the hub (2).

9. FRONT SWIVELING WHEELS

Move the locking mechanism down to lock front swiveling wheels. Move the locking mechanism up to unlock the front wheel.

NOTE:

Swiveling wheels must be unlocked prior to moving the stroller backwards!!! Failure to observe instructions for the swiveling wheels may result in mechanical damage to the steering elements, which are not subject to complaint.

10. PARKING DEVICE (brake)

Press the brake pedal with the foot to lock the rear wheels. Lift the brake pedal with the foot to unlock the rear wheels.

11. ADJUSTING THE PARKING DEVICE

NOTE: Carry out the adjustment using keys 8 and 10 (not provided in the set) To make the adjustments, proceed as follows:

- a) Unscrew the control nut (B) turning it to the right

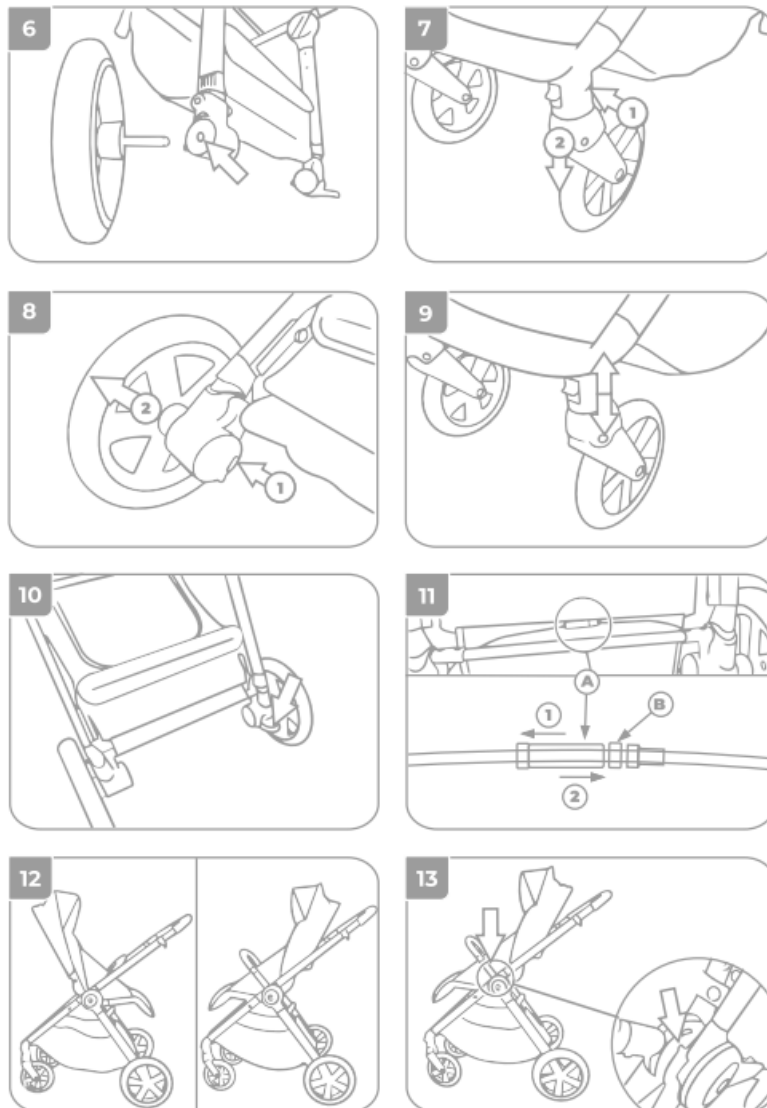
- b) Turn the adjusting screw (A) to the left (1) to tighten the parking device
- c) Turn the adjusting screw (A) to the right (1) to loosen the parking device
- d) After adjusting the brake (adjusting screw (A) in appropriate location), tighten the control nut (B) to the adjusting screw to secure the screw against change of its location.

SEAT UNIT

ASSEMBLY AND DISASSEMBLY OF THE SEAT UNIT

NOTE: Never assemble or disassemble the seat unit with the child inside it. Never assemble the seat if additional adapters are assembled to the structure.

12. Seat unit in the stroller can be assembled facing forward and backward.
13. To do so, position the seat unit facing forward or backward and insert it into the mounting mechanism of the stroller locks.



NOTE: Make sure the seat unit is properly assembled in the frame of the stroller.

14. To detach the seat unit from the stroller, press the buttons on both sides of the seat unit (1) and take it off the frame (2).

BACKREST ADJUSTMENT

15. To change the position of the backrest, lift the adjustment handle (1) and adjust the backrest to desired position (2).

ASSEMBLY OF THE SEAT UNIT

16. Fold the canopy. Put the backrest in the highest position. Move the locking mechanism of the handle to the right

(1) and lift the handle of the adjusting mechanism (2). Push the backrest to fold the seat unit (3).

UNFOLDING THE SEAT UNIT

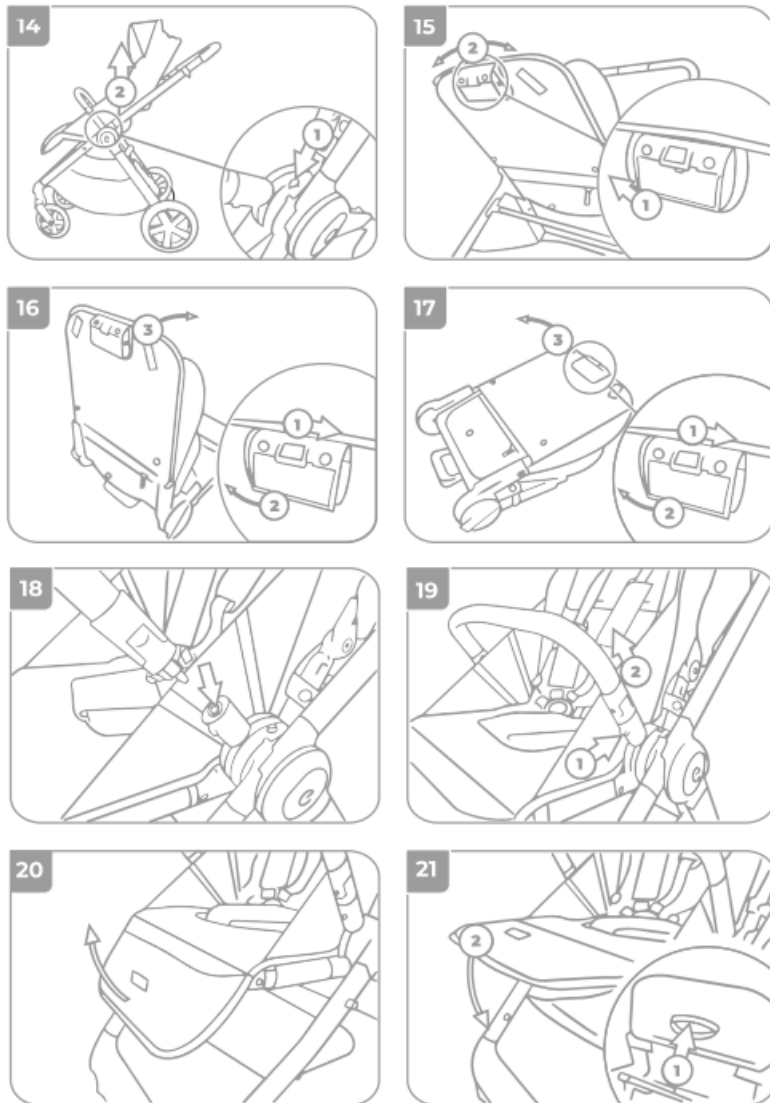
17. Move the locking mechanism of the handle to the right (1) and lift the handle of the adjusting mechanism (2). Lift the backrest to fold the seat unit.

BUMPER BAR

18. To assemble the bumper bar, insert it on plastic openings on both sides of the frame. Make sure the bumper bar is properly secured against sliding out.
19. To detach the bumper bar, press the buttons located below the bumper bar at the same time (1) and take it off the openings in the seat unit (2).

FOOTREST ADJUSTMENT

20. To lift the footrest, lift its end part.
21. To lower the footrest, pull the handle below the footrest (1) and lower it (2).



CANOPY: ASSEMBLY AND OPERATION

22. Insert the ends of the canopy into the opening on the sides of the seat unit (1) and fix the canopy to the backrest with snap fasteners (2).
23. To detach the canopy, detach the snap fasteners, press locking mechanism on both sides of the seat unit (1) and take the canopy off the frame (2).
24. To change the position of the canopy, hold its top part and adjust it to the required position.
25. To additionally enlarge the canopy, unzip the zipper in the back part (1) and unfold the canopy (2).

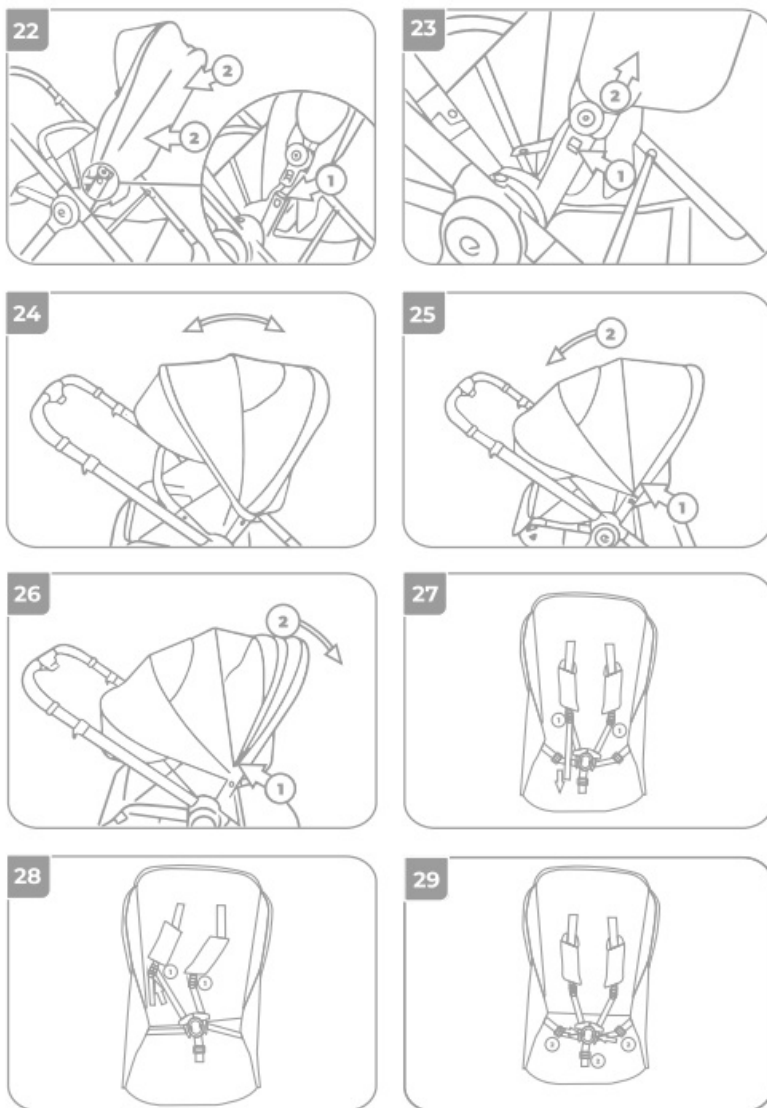
26. To have access to the ventilation system of the canopy, enlarge it, unzip the zipper in the back part (1) and move the fabric (2).

SHOULDER STRAPS LENGTH ADJUSTMENT

27. Pull out the free end of the strap to remove any loose part.
28. Pull the fastener (1) to loosen the tension of the shoulder straps. Adjust the length of the hips and crotch straps using the fasteners (2)

BUCKLE MANUAL

29. The stroller is equipped with a magnetic buckle. To unbuckle the buckle, press both buttons of the buckle located on both sides at the same time and remove one part from the other one.



HOW TO LOCK THE BUCKLE

30. Insert the strap fastening mechanism in the back part of the buckle. Repeat on the other side.
31. Attach two parts of the buckle with one other.
32. Attach the front part of the buckle with the back part until you hear the clicking sound. Check if the buckle is properly locked in place.

ASSEMBLY / ADJUSTMENT OF THE SAFETY BELTS HEIGHT

33. To assemble / To adjust the height of the seat belts, take them out of the openings in the backrest/seat unit and the upholstery and insert through openings in the upholstery and the seat unit/backrest at the desired height.

NOTE! Before locking the child with the seat belts, make sure that the seat belts are properly assembled.

34. To use an additional harness, fix it on plastic rings located on the strollers belts.

FOOTMUFF

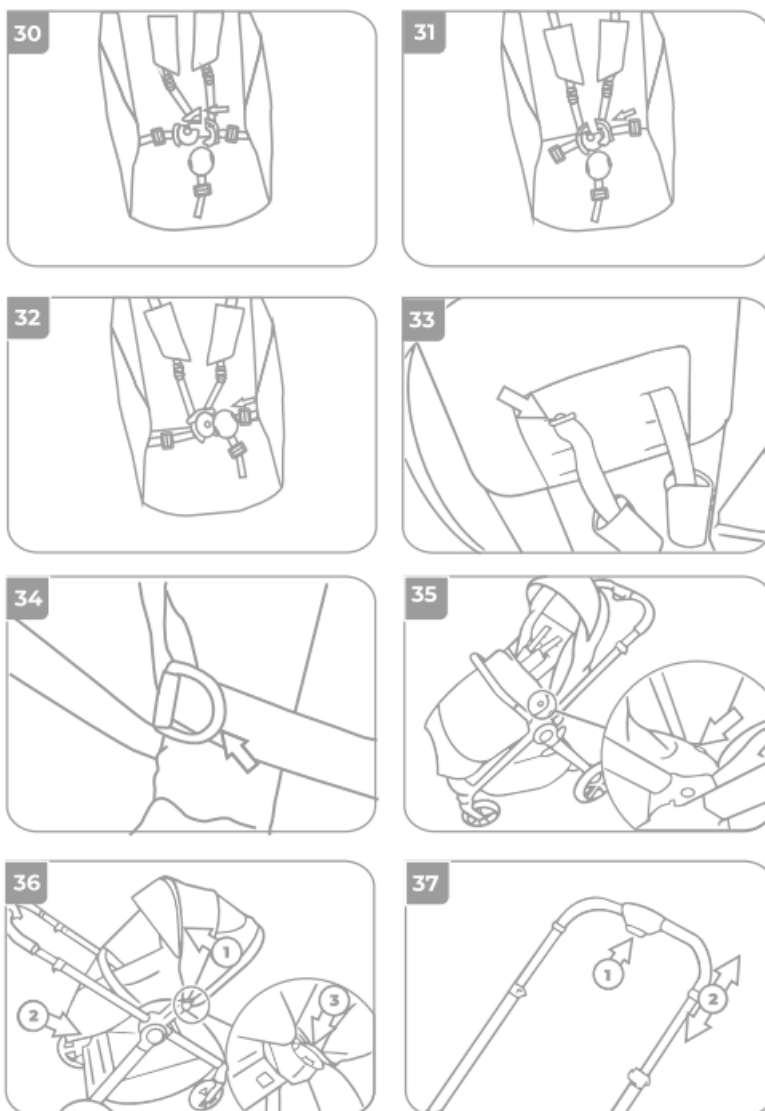
35. Insert the footmuff on the footrest, place it below the bumper bar and fix with snap fasteners to the belts in the upholstery.

MOSQUITO NET FOR THE SEAT UNIT

36. Unzip the zipper below the stroller canopy (1) and take the mosquito net off. Fix the lowerpart of the mosquito net on the footrest of the seat unit (2) and fix its lateral part to the canopy with a plastic ring (3).

HANDLE LENGTH ADJUSTMENT

37. Press the button on the handle (1) and simultaneously adjust it to the required height (2).



FOLDING THE STROLLER

38. Unlock the front wheels, disassemble the seat unit and fold the canopy. Press the buttons of the locking mechanism located on both sides of the guide bar of the stroller (1) and pull the handles of the locking mechanism up (2).
39. Lower the handle at the same time (1). Insert the front part of the frame to the middle part of the stroller (2).
40. Make sure that the locking mechanism secured the stroller against accidental unfolding.

FOLDING THE STROLLER WITH THE SEAT UNIT

Unlock the front wheels and fold the canopy. Seat unit can be assembled facing forward and backward.

41. Fold the seat unit on the frame of the stroller
42. Fold the frame (1) and place the seat unit on it (2)
43. Make sure that the frame is secured against accidental unfolding.

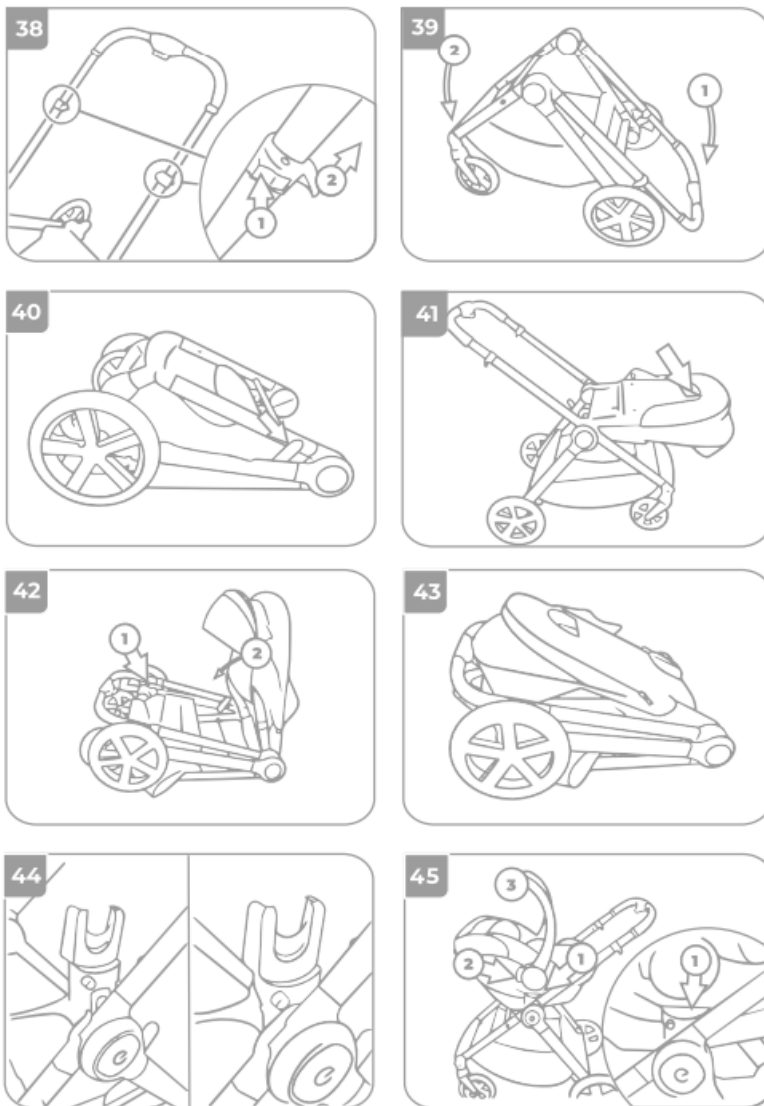
ASSEMBLY AND DISASSEMBLY OF THE CAR SEAT BABY SAFE YORK ON THE FRAME OF THE STROLLER

NOTE: Never assemble or disassemble the car seat with the child inside it.

ASSEMBLY OF THE CAR SEAT

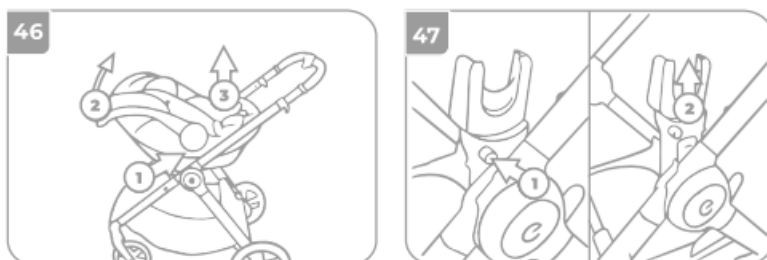
44. Fix the adapters on the frame of the stroller inserting them in the openings of the stroller locks. Make sure they are properly locked in place.
45. Place the car seat facing backwards and insert it into previously assembled adapters(1). Press the buttons on both sides of the stroller handle (2) and fold them (3) to lock it in the adapters.

NOTE: Make sure the car seat is properly assembled.



DISASSEMBLY OF THE CAR SEAT

46. Press the buttons on both sides of the stroller handle (1) and lift the handle (2). Take the car seat off the adapters (3).
47. Disassemble each adapter by pressing the button (1) and taking the adapter off the frame (2).



CLEANING AND OPERATING

- Plastic parts of the stroller and stripes may be cleaned with soft, damp cloth. Do not use aggressive cleaning agents.
- Clean metal parts with dry cloth removing dust and water. If the stroller gets muddy or after its use during winter, maintain it with use of lubricating products.
- Upholstery cleaning manual: – Clean using a cloth with mild cleaning agent, do not wet it, do not whirl, dry unfolded.
- Check periodically if screws did not get loose and replace damage parts.
- Lubricate riding elements, i.e. wheels hubs and axes using common products, eg. silicone grease. It should be done especially after using the stroller on sandy ground or during winter. Aggressive agents may cause corrosion.
- Remember to maintain all metal elements.

WARNING

IMPORTANT – READ CAREFULLY AND KEEP FOR FUTURE REFERENCE

- **WARNING** Never leave the child unattended
- **WARNING** Ensure that all the locking devices are engaged before use
- **WARNING** To avoid injury ensure that your child is kept away when unfolding and folding this product.
- **WARNING** Do not let the child play with this product
- **WARNING** This seat unit is not suitable for children under 6 months
- **WARNING** Always use the restraint system
- **WARNING** Check that the pram body or seat unit or car seat attachment devices are correctly engaged before use
- **WARNING** This product is not suitable for running or skating
- Maximum weight and age of the child for which the vehicle is suitable: 22 kg or 4 years whichever comes first.
- Parking device (brake) should be activated when putting the child in or taking the child out of the stroller – When parking the stroller, always activate the brake (parking device)
- Maximum load of the bag on the stroller's handle is 1.5 kg.
- Maximum load of the basket is 3 kg. – Maximum load of pocket of the canopy/carrycot is 0.3 kg.
- Any load on the handle and/or posterior part of the backrest and/or sides of the stroller will influence stability of the stroller
- Do not hang bags which are not appropriate for hanging or bags different than recommended by the manufacturer on the stroller's guides
- it is dangerous and may lead to damage to the stroller.
- This stroller is intended for use by one child.
- Do not use accessories which are not approved by the manufacturer. Use only spare parts which are approved or recommended by the manufacturer.
- Do not use additional platforms attached to the stroller.
- In the event any defects are detected, do not use the product and contact the service of Baby Design Group of the seller.
- Never go down or up the stairs with the stroller (also on slides), especially with a child inside
- it may lead to serious injury to the child and damage to the stroller.

- Rocking the stroller may deteriorate its structure and lead to damage.
- Never lift or move the product with the child inside it.
- Make sure folding elements are locked prior to using the stroller (that is is properly unfolded and locked in place).
- Always assemble all protective and securing elements of the stroller in compliance with instructions.
- Always attach the crotch belt on the bumper bar.
- Check periodically if all elements of the stroller are operational and safe, in particular check if the seat unit, carrycot and the car seat are properly assembled to the chassis.
- When folding and unfolding the stroller, as well as when adjusting the backrest, handle or other elements of the stroller, keep your and your child's body parts safe.

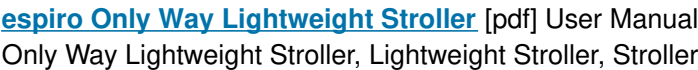


- The stroller is intended for moving forward. – Baby Design Group sp. Z o.o. sp. K. is not liable for any damage to property or injuries arising from the assembly and use of the product which is not compliant with instructions and recommendations of the manufacturer covered by this user manual. – Use only elements supplied or recommended by the manufacturer/distributor.
- You may assemble the carrycot, seat unit, or the car seat on the stroller's frame. Carrycot:
- Do not use any additional mattress than the one recommended by the manufacturer.
- The product shall not be used, as soon as the child is able to sit by himself, roll over and can push itself up on its hands and knees. Maximum weight of the child: 9kg.
- Handles for carrying should be placed outside the carrycot when using it. Car seat:
- Car seat does not substitute cradle or baby cot. If your child wants to sleep, put it inside and appropriate carrycot, cradle or baby cot. Upholstery cleaning manual:
- Clean using a cloth with mild cleaning agent, do not wet it, do not whirl, dry unfolded. Be aware of the risk of open fire and other sourced of strong heat in the vicinity of the product.
- Wheels: inflate to 28P.SI. (2.0BAR).

BDG PRODUKCJA Sp.Z.O.O.

Ul. Warszawska 8
 42 – 262 Poczesna
 POLAND
 Tel. +48 (34) 360 46 64, +48 (34) 360 46 53
 Tel. serwis +48 (34) 364 36 41
 E- mail: biuro@babydesign.eu
 E- mail serwis: serwis@babydesign.eu
www.espiro.pl

Documents / Resources



- User Manual

This website is an independent publication and is neither affiliated with nor endorsed by any of the trademark owners. The "Bluetooth®" word mark and logos are registered trademarks owned by Bluetooth SIG, Inc. The "Wi-Fi®" word mark and logos are registered trademarks owned by the Wi-Fi Alliance. Any use of these marks on this website does not imply any affiliation with or endorsement.