




ESI KB00022 Waveterminal 192 Windows 7 Driver Software

ESI KB00022 Waveterminal 192 Windows 7 Driver Software User Guide

[Home](#) » [ESi](#) » ESI KB00022 Waveterminal 192 Windows 7 Driver Software User Guide 

ESI KB00022 Waveterminal 192 Windows 7 Driver Software



ESI KB00022 Waveterminal 192 Windows 7 Driver Software

Contents

- [1 Introduction](#)
- [2 Installation](#)
- [3 Uninstallation](#)
- [4 Customer Support](#)
- [5 Documents / Resources](#)
 - [5.1 References](#)
- [6 Related Posts](#)

Introduction

This covers the installation of the Windows Vista and Windows 7 driver of Waveterminal 192L , Waveterminal 192M and Waveterminal 192X up to version 1.08. The driver works with both 32-bit and 64-bit systems. If you

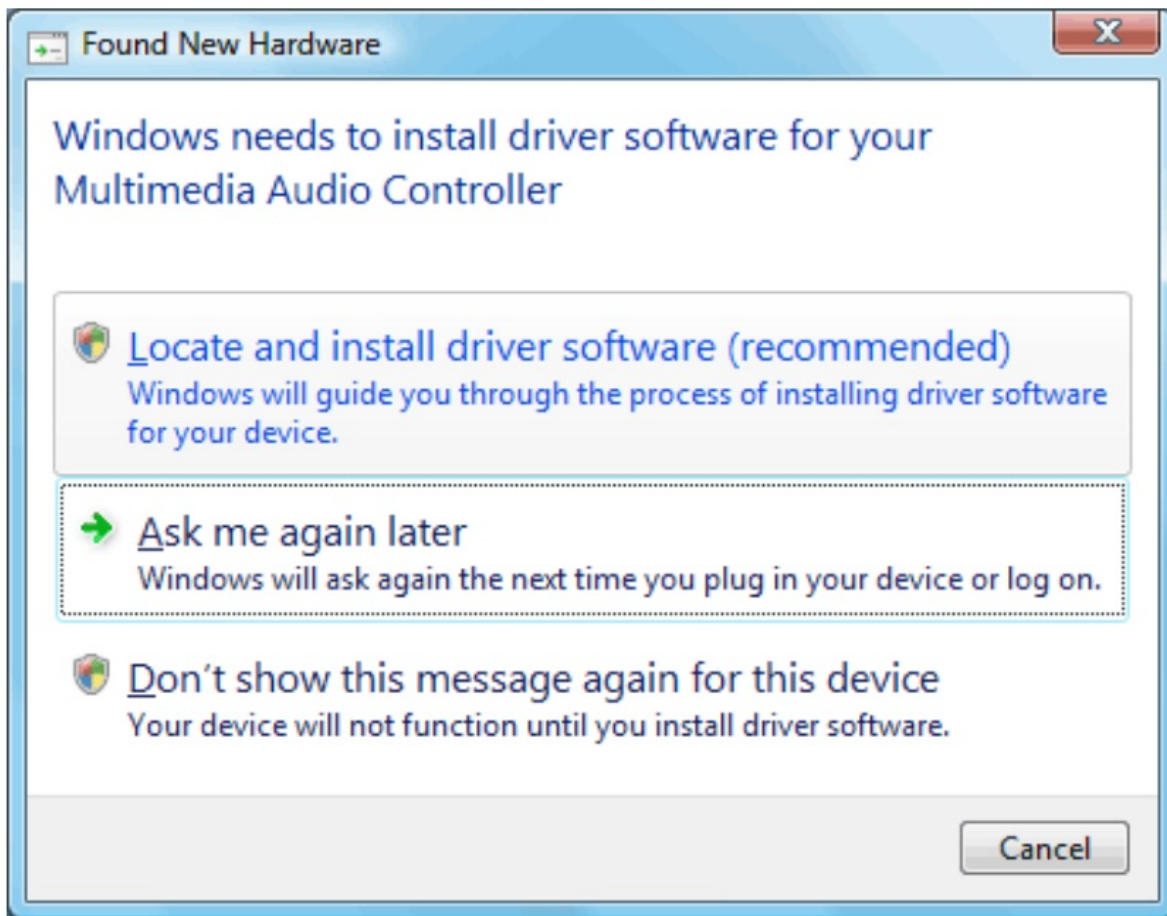
have installed a previous driver already, you need to remove it first – this is described below in the uninstallation section . Then you can proceed with driver installation . A description of the installation with later drivers (starting from version 1.09) can be found here.

Installation

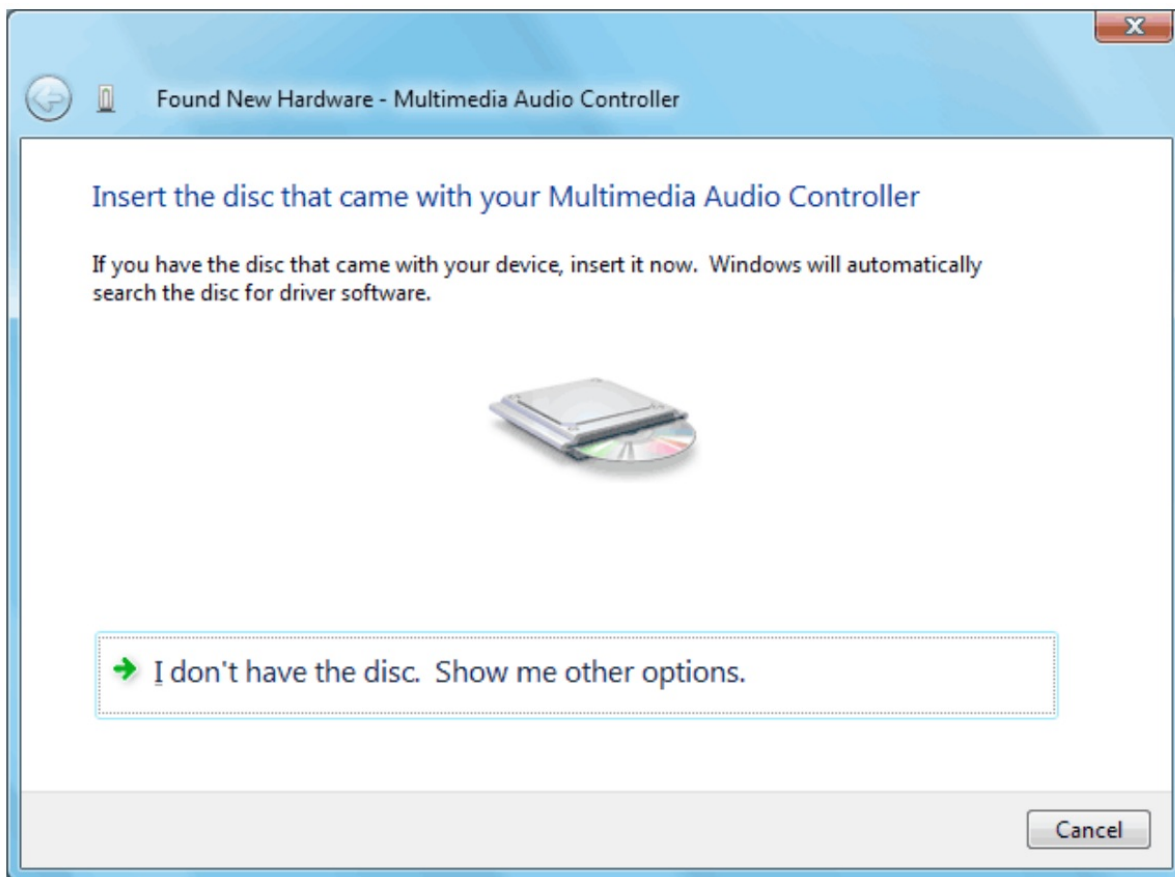
Make sure that you have downloaded and unzipped the driver file . Install the Waveterminal 192 L/M/X hardware in your computer or if you have previously uninstalled an older driver, reboot your system. When booting the system, Windows will detect the hardware as a new device and a Found New Hardware dialog will appear automatically.

Note: if the hardware is already installed in your PC but you did not install a driver, please find the entry for an unknown Multimedia

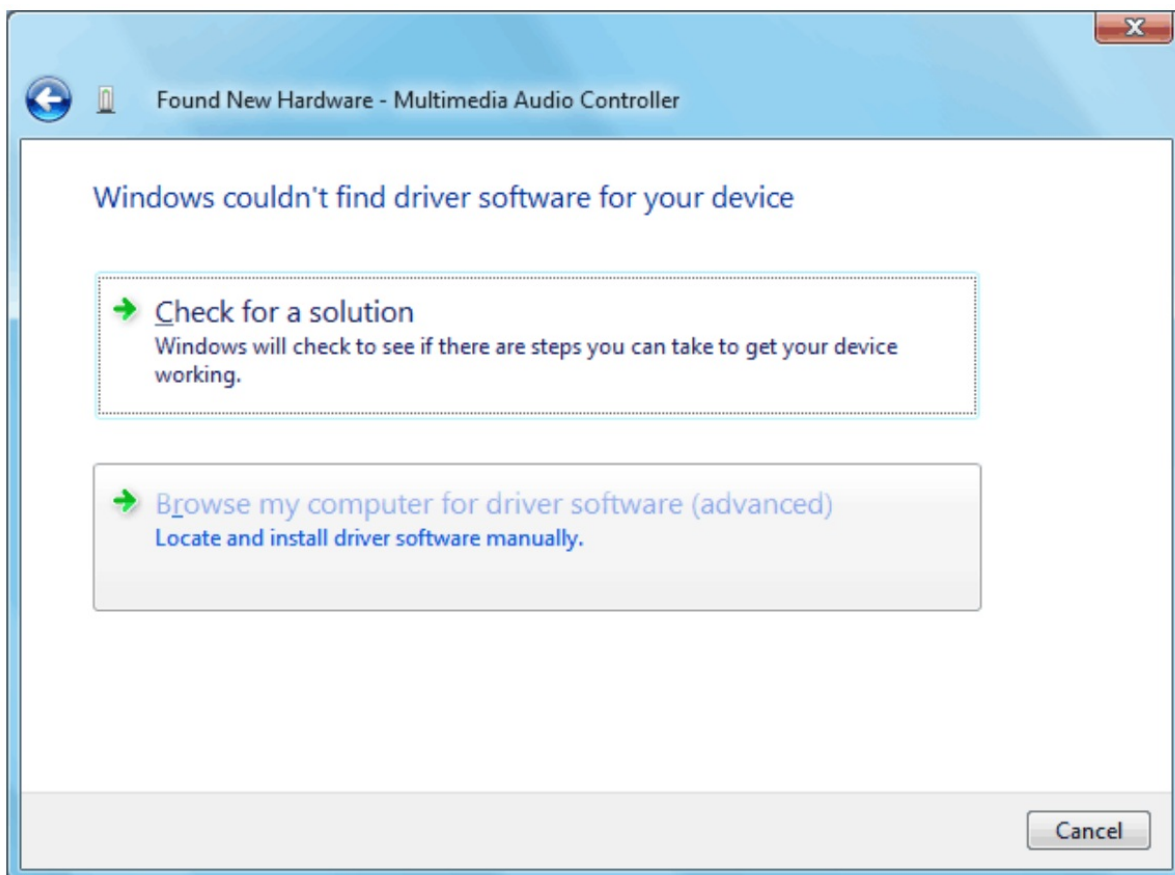
Audio Controller in Control Panel > System > Device Manager . Right click on that and select the driver update option.



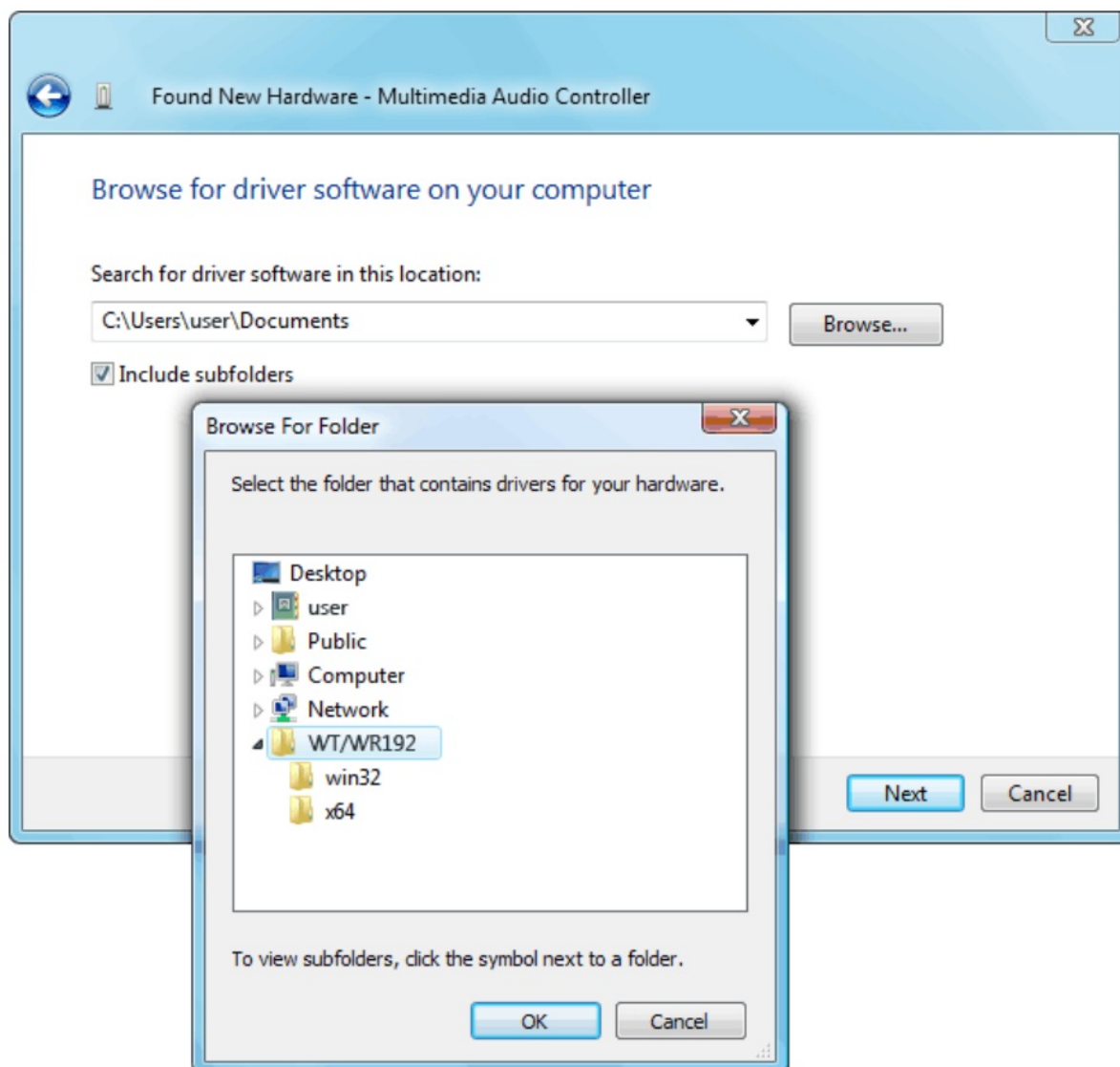
Make sure to click on Locate and install driver software (recommended) . The following dialog will appear after some time:



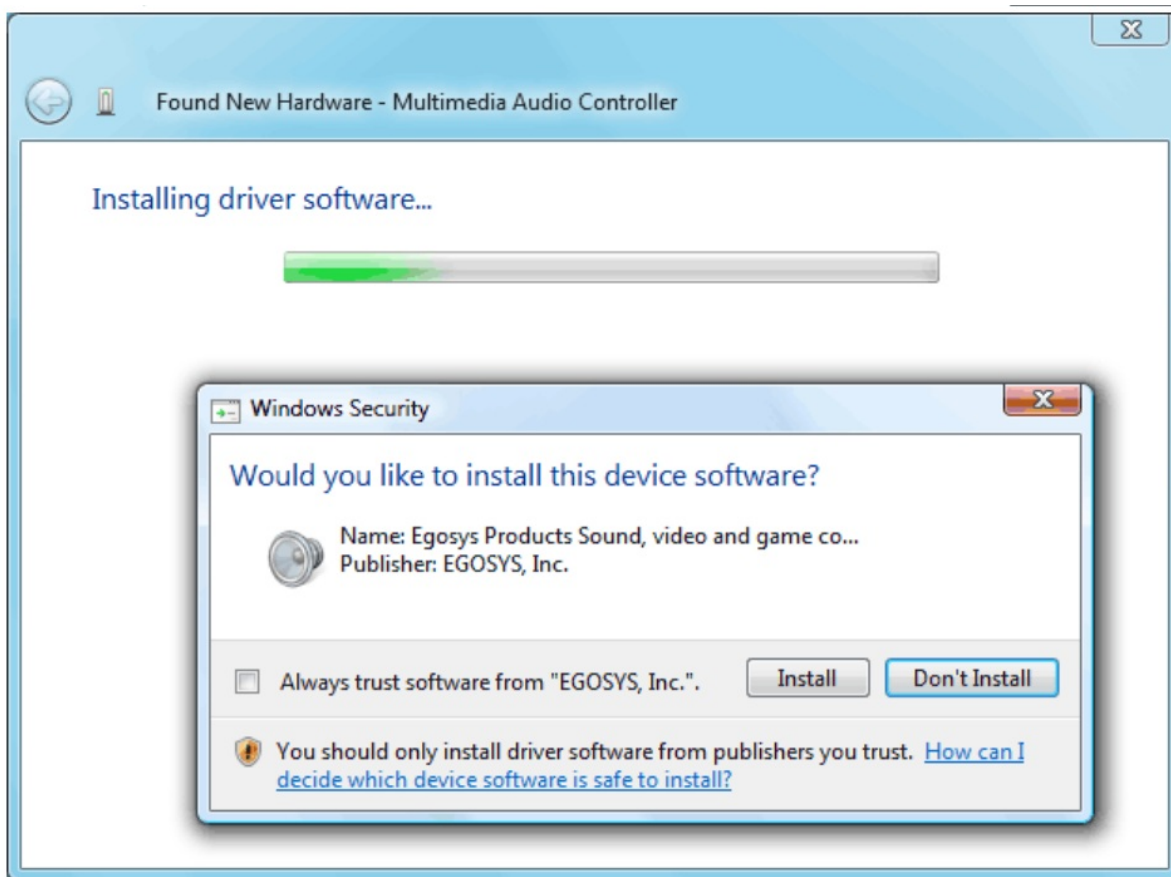
Click on I don't have the disc. Show me other options. to continue. Please note that it might take some time until the next dialog appears:



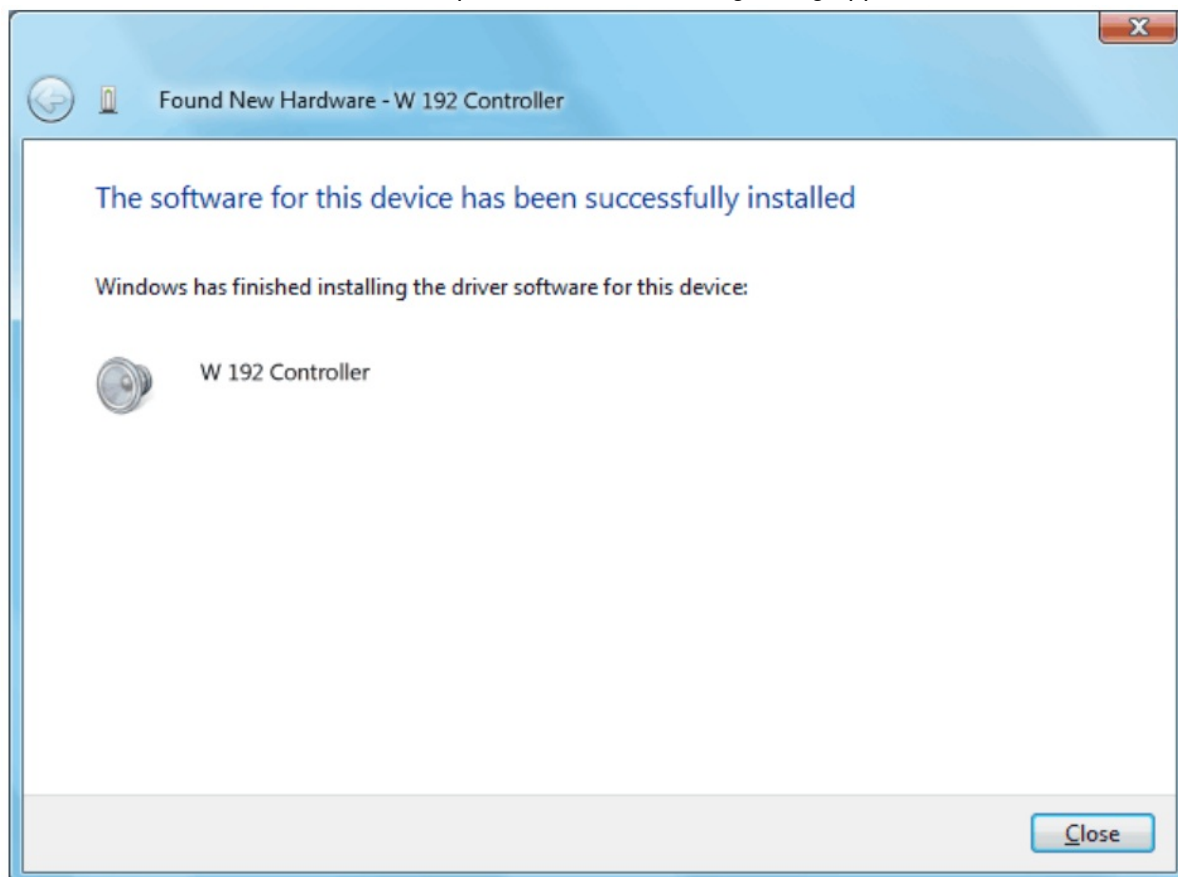
Proceed by clicking on Browse my computer for driver software (advanced) . The following dialog will be shown:



Click on Browse... and then select the folder that contains the unzipped driver. Click OK and then Next. The driver installation will now start. After some time, you will be prompted to confirm a Windows Security message. Make sure to click Install to continue.



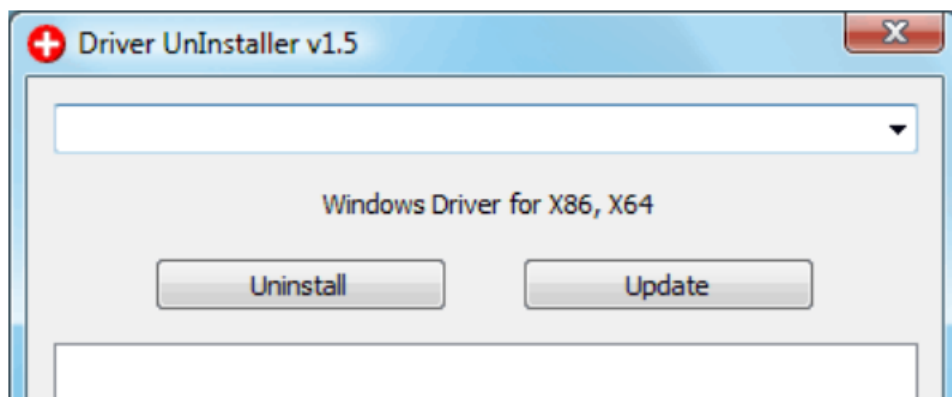
The driver installation will now be completed until the following dialog appears:



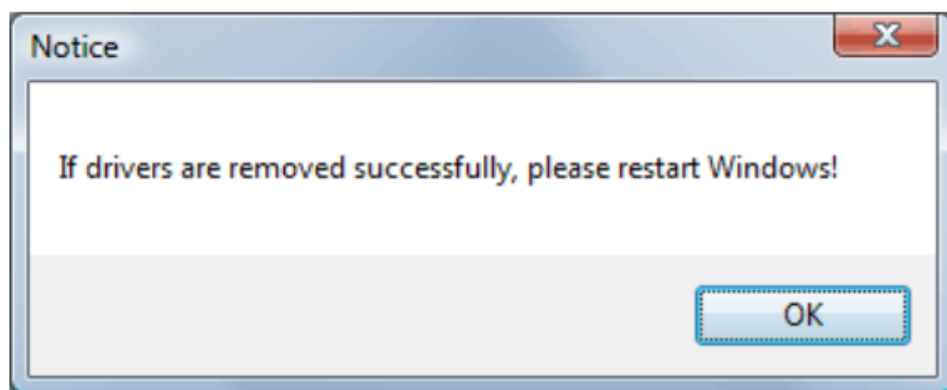
Congratulations – you can now use Waveterminal 192 L/M/X in your system. The control panel will appear after a few seconds in the task notification area of the taskbar.

Uninstallation

To uninstall the driver, you can use an utility that is included with the driver. Make sure you have unzipped the driver file . Open Windows Explorer and find the correct driver folder. If you are using Windows Vista/7 32-bit, go to the win32 folder and launch UnInstall_32 by double clicking on it. If you are using Windows Vista/7 64-bit, go to the x64 folder and launch Uninstall_64 by double clicking on it. When launching the uninstaller, Windows Vista might prompt a security message. Make sure to allow the uninstallation. The following dialog will appear:



Click on Uninstall. After a few seconds, this dialog confirms the procedure:



Note that in some cases, Windows will ask you if the uninstaller worked, confirm this with This program installed correctly . To re-install the updated driver (as described above), you need to reboot the system

Customer Support

Copyright © 1998-2024 ESI Audiotechnik GmbH – All rights reserved. www.esi-audio.com





[ESI KB00022 Waveterminal 192 Windows 7 Driver Software](#) [pdf] User Guide
KB00022, KB00022 Waveterminal 192 Windows 7 Driver Software, Waveterminal 192 Windows 7 Driver Software, Windows 7 Driver Software, Driver Software, Software

References

- [User Manual](#)

[Manuals+](#), [Privacy Policy](#)

This website is an independent publication and is neither affiliated with nor endorsed by any of the trademark owners. The "Bluetooth®" word mark and logos are registered trademarks owned by Bluetooth SIG, Inc. The "Wi-Fi®" word mark and logos are registered trademarks owned by the Wi-Fi Alliance. Any use of these marks on this website does not imply any affiliation with or endorsement.