



Contents [[hide](#)]

- [1 EseeCloud S06 Wi-Fi Camera App](#)
- [2 Device connection](#)
- [3 SIGNUP/LOGIN](#)
- [4 CONNECTION OPERATION VIDEO](#)
- [5 ADD DEVICE](#)
- [6 SCAN CODE BINDING](#)
- [7 FCC Statement](#)
- [8 FAQ](#)
- [9 Documents / Resources](#)
 - [9.1 References](#)

EseeCloud

EseeCloud S06 Wi-Fi Camera App



Device connection

1. Download the APP

Use your phone to scan the QR code below to download the application, while users can use the App Store/Google Play to search for Eseecloud APP to download.



Download "Eseecloud" APP

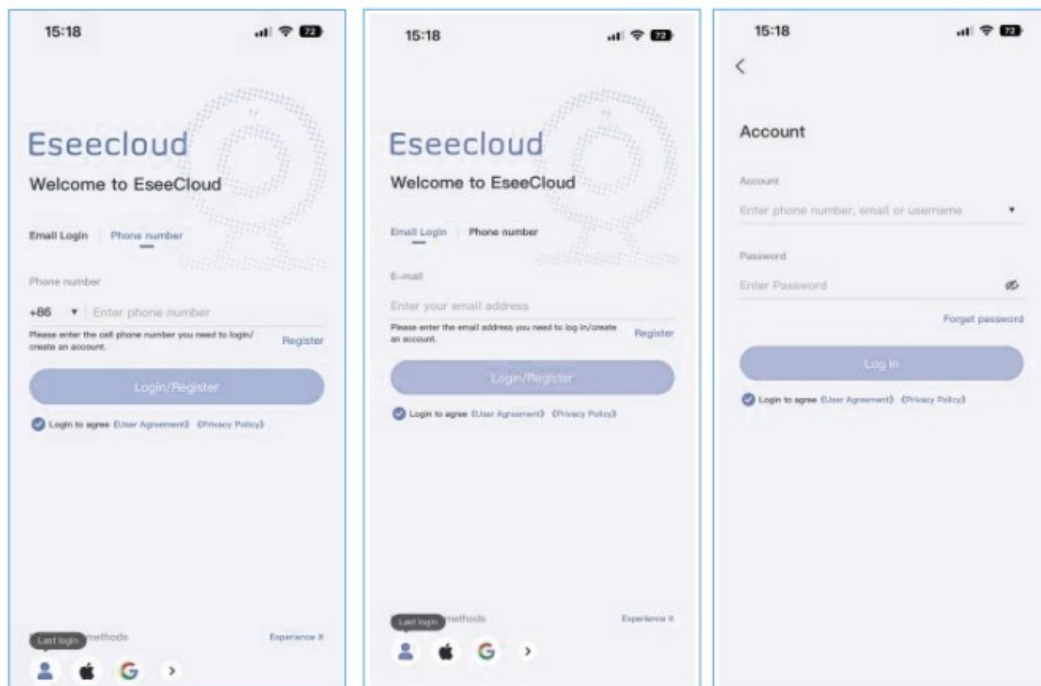
SIGNUP/LOGIN

1. Please register an APP account and log in.

- Step1: New User need to sign up an account and select your country.
- Step2: Click "Sign up" then enter your email, username name and password.

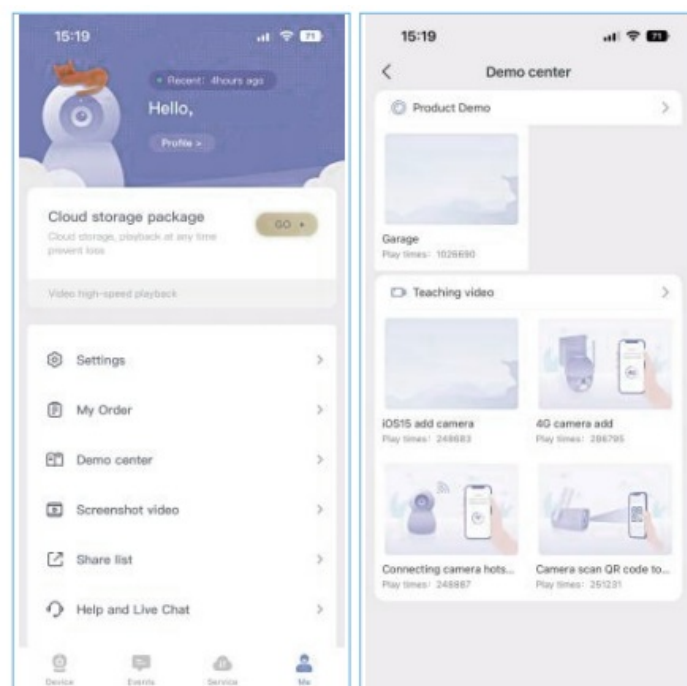
Complete the verification and Sign in your account.

2. If you already have an Eseecloud account, Login directly



CONNECTION OPERATION VIDEO

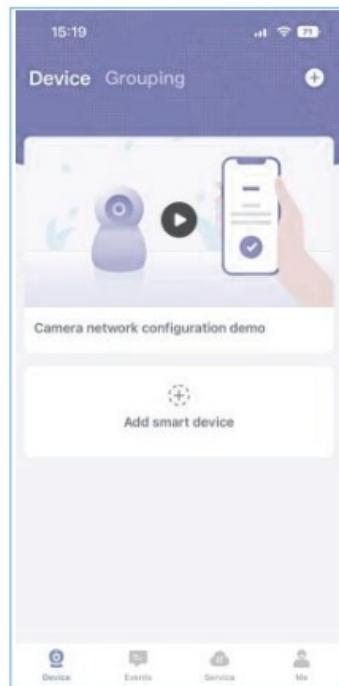
On the App home page,you can learn by watching the WIFI camera connection operation video



ADD DEVICE

Step 1: Power on the camera until you hear a APP connection prompt (If you don't hear the APP connection prompt, please press the"RESET"on the device.)

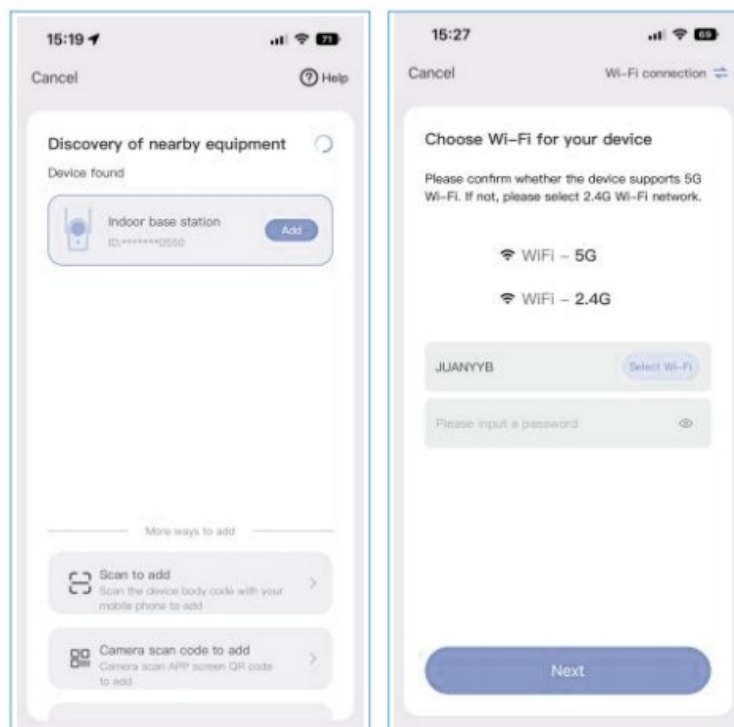
Step 2: Click"+on App right corner under Home page. There will have multiple connection way for you to adding the device.



SCAN CODE BINDING

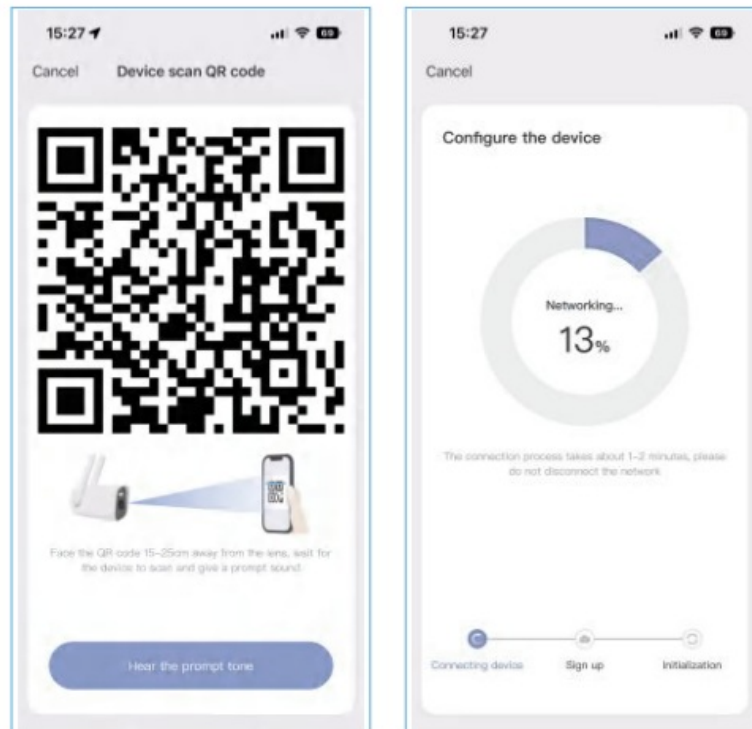
Follow tips below to connect the WiFi

1. Use the phone camera to scan the QR code on the camera body.
2. Input the 2.4G or 5G WiFi name and password Some models do not support 5G.
3. Select the searched device.
4. Wait 1-2 Minutes. Connect to the WiFi.



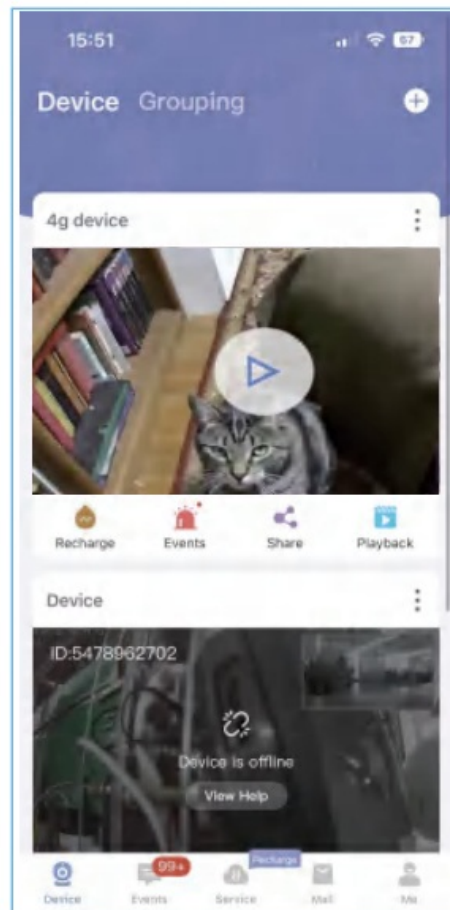
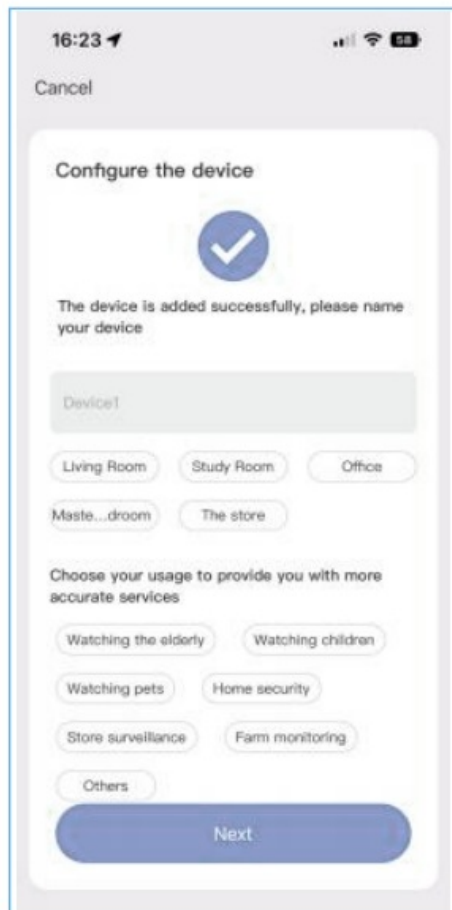
5. The QR code displayed by the APP is aligned with the camera lens, keep it 15-30 centimeters and wait for the camera to scan it.

6. After the camera scanning the QR code successfully and finishes configuring the network, it automatically jumps to the binding interface.



ADD COMPLETED

1. At the Installation Environment Test screen, select "Skip".
2. Add Camera Completely.



FCC Statement

Note: This equipment has been tested and found to comply with the limits for a Class B digital device, pursuant to part 15 of the FCC Rules. These limits are designed to provide reasonable protection against harmful interference in a residential installation. This equipment generates, uses and can radiate radio frequency energy and, if not installed and used in accordance with the instructions, may cause harmful interference to radio communications. However, there is no guarantee that interference will not occur in a particular installation. If this equipment does cause harmful interference to radio or television reception, which can be determined by turning the equipment off and on, the user is encouraged to try to correct the interference by one or more of the following measures:

- Reorient or relocate the receiving antenna.
- Increase the separation between the equipment and receiver.
- Connect the equipment to an outlet on a circuit different from that to which the receiver is connected.
- Consult the dealer or an experienced radio/TV technician for help.

Important: Changes or modifications not expressly approved by the manufacturer responsible for compliance could void the user’s authority to operate the equipment.

This device complies with part 15 of the FCC Rules. Operation is subject to the following two conditions:

- 1. This device may not cause harmful interference, and
- 2. this device must accept any interference received, including interference that may cause undesired operation.


TRF Exposure Statement

To maintain compliance with FCC’s RF Exposure guidelines, this equipment should be installed and operated with a minimum distance of 20cm the radiator your body.

FAQ

- **Q: What should I do if I encounter interference issues?**
- A: Increase the separation between the equipment and receiver, connect to a different circuit, or seek help from a professional technician if needed.
- **Q: How can I ensure compliance with FCC guidelines for RF exposure?**
- A: Maintain a minimum distance of 20cm between the equipment and your body.

Documents / Resources

	EseeCloud S06 Wi-Fi Camera App [pdf] User Manual 2BEXJ-S06, 2BEXJS06, S06 Wi-Fi Camera App, S06, Wi-Fi Camera App, Camera App, App
---	---

References

- [User Manual](#)

Leave a comment

Your email address will not be published. Required fields are marked *

Comment *

Name

Email

Website

☐ Save my name, email, and website in this browser for the next time I comment.

Post Comment

Search:

e.g. whirlpool wrf535swhz

Search

[Manuals+](#) | [Upload](#) | [Deep Search](#) | [Privacy Policy](#) | [@manuals.plus](#) | [YouTube](#)

This website is an independent publication and is neither affiliated with nor endorsed by any of the trademark owners. The "Bluetooth®" word mark and logos are registered trademarks owned by Bluetooth SIG, Inc. The "Wi-Fi®" word mark and logos are registered trademarks owned by the Wi-Fi Alliance. Any use of these marks on this website does not imply any affiliation with or endorsement.