



## ESDEC FlatFix Fusion The Versatile Click System For Flat Roofs Instruction Manual

[Home](#) » [ESDEC](#) » ESDEC FlatFix Fusion The Versatile Click System For Flat Roofs Instruction Manual 

### ESDEC FlatFix Fusion The Versatile Click System For Flat Roofs



## Contents

- [1 THE ADVANTAGES OF FLATFIX FUSION](#)
- [2 COMPLETE AND FLEXIBLE INSTALLATION ON EVERY ROOF](#)
- [3 Calculator](#)
- [4 Warranty](#)
- [5 CUSTOMER SUPPORT](#)
- [6 Documents / Resources](#)
  - [6.1 References](#)
- [7 Related Posts](#)

## THE ADVANTAGES OF FLATFIX FUSION

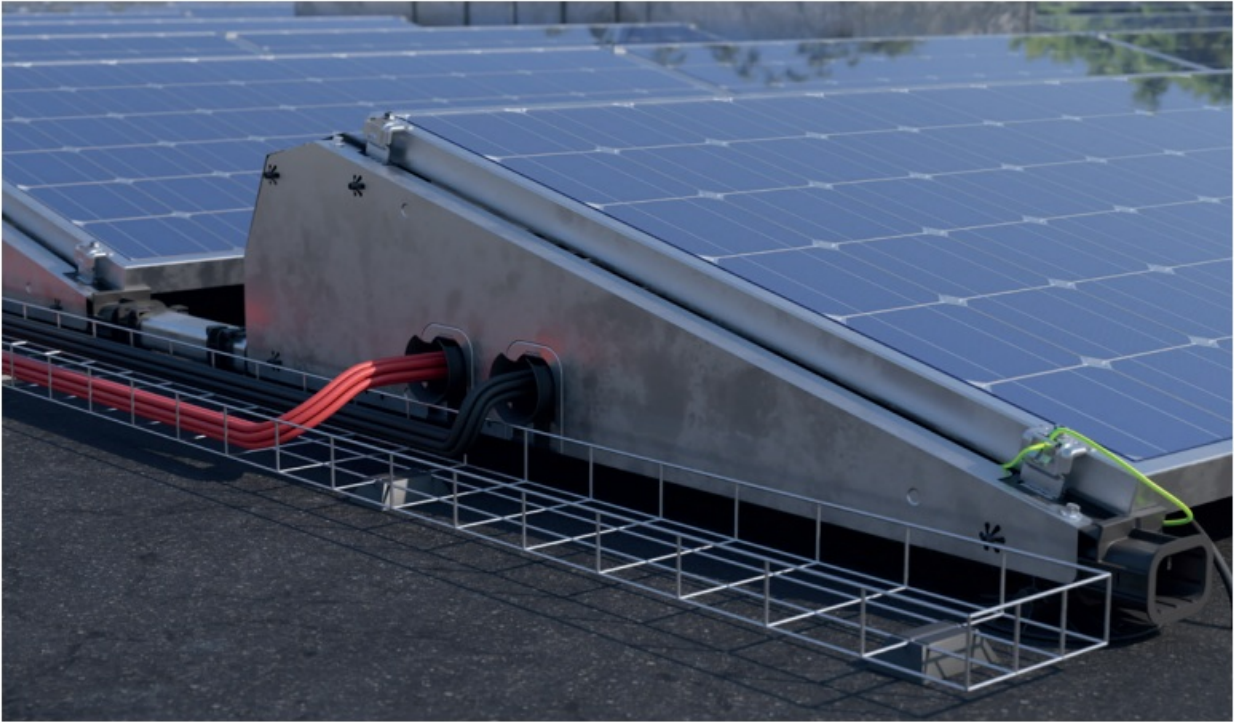
### FLEXIBLE AND EASY

- Completely modular system
- Flexible installation: Easy to build around obstacles
- Aesthetic lightweight system
- Single or dual setup
- Suitable for residential and commercial projects
- Strong and durable clamping force with metal insert in high and low base
- For panels up to 1150mm wide and 2190mm long



### RELIABLE

- Aerodynamic design with rounded corners and smooth material finish
- Robust system thanks to connectors parallel and perpendicular to the panels
- Wind defectors designed for maximum safety
- Tested to international standards
- 20-year warranty



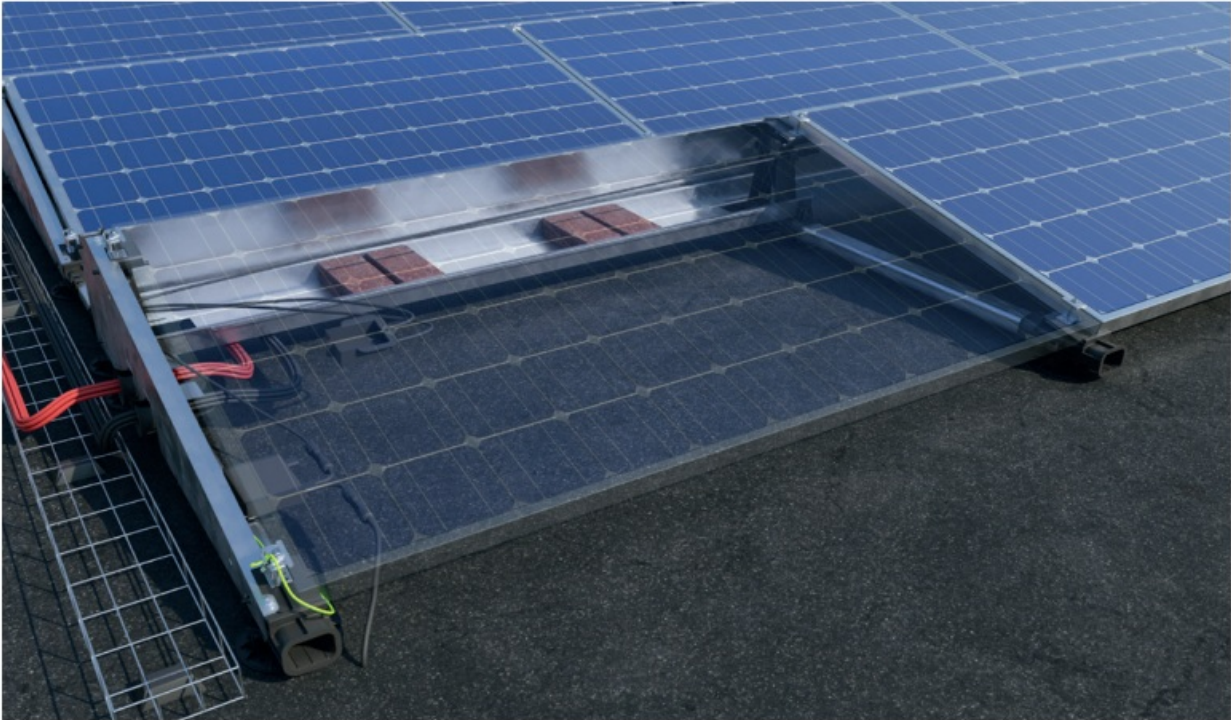
## SAFETY FOR THE ROOF

- For every type of roof
- Roof support with movable connectors
- Unique thermal decoupling prevents damage to roof material
- Optimum point pressure due to distributed ballast
- Integrated grounding and bonding in high and low base in accordance with IEC 60364 series
- Cable exits and cable guides (optional) for safe cable management



## EASY TO INSTALL

- User-friendly click system
- Optimizer ready cable clip for easy attachment and safe cable removal
- Grounding clamp can easily be incorporated onto the end clamp
- Optimizer clip can also be used for most micro inverters
- For the most common solar panels (angle of inclination 13°)
- Renewed end clamps for even more powerful and easier installation



## COMPLETE AND FLEXIBLE INSTALLATION ON EVERY ROOF

Flat Fix Fusion is the modular and flexible mounting system for solar panels on small and medium-sized roofs. Its modular design enables a customized configuration to be created for every roof. Installers can, for example, easily build around obstacles – such as chimneys – with this system. Flat Fix Fusion can be set up either in dual or single configuration. Flat Fix Fusion is a 100% Dutch product that has proven itself for years. In 2021, the system received an update of a number of components, which not only makes installation even easier for the installer, but also further increases the safety of the roof and the PV system. It is now possible to install solar panels up to 1150mm wide and 2190mm long with Flat Fix Fusion.

### Easy to install

Esdec was founded by professional installers, the interest of the installer always come first when designing our products. Simplicity and flexibility were therefore the starting points in the design of our Flat Fix Fusion system. Smart click connections enable the system to be assembled quickly. Handy features on the clamps and on the wind deflectors make installation even easier.

### Safety for the roof

The different components are connected using fast-click connectors. The roof supports with movable connectors allow the system to move (expand and shrink) to prevent damages of the roof material. As a result, the thermal movements of the building are not transmitted to the PV system and vice versa. The 2021 upgrade includes a safe and aesthetic solution for cable management: cables are guided through the wind deflectors with a cable exit guide.

## Reliability

The patented Flat Fix Fusion system has been extensively tested on fire safety, wind resistance and corrosion. With even stronger and durable clamping force with a metal insert in the high and low base. Flat Fix Fusion is a highquality mounting solution. It complies with the strictest international standards and comes with a 20-year warranty.

## ADVANTAGES FOR THE INSTALLER

- Modular mounting solution with click connection
- Flexible installation on any roof
- Integrated grounding and equipotential bonding
- Ease of installation with optimizer clip with integrated cable clip

## ADVANTAGES FOR THE END USER

- Roof-specific configuration
- Safe and reliable
- No damage of the roof material
- 20-year product warranty

### 1. **Strong, lightweight system**

The different components enable flexible row lengths.

This makes it possible to create a roof specific setup and, for example, to build around obstacles.

### 2. **Easy maintenance**

Flat Fix Fusion is made of strong, lightweight materials. With the high and low base, with a metal insert, the clamping force remains optimal after removal and reinstallation of panels.

### 3. **Unique click connection**

The revolutionary, unique click connection makes the Flat Fix Fusion a very quick and easyto-install mounting solution.

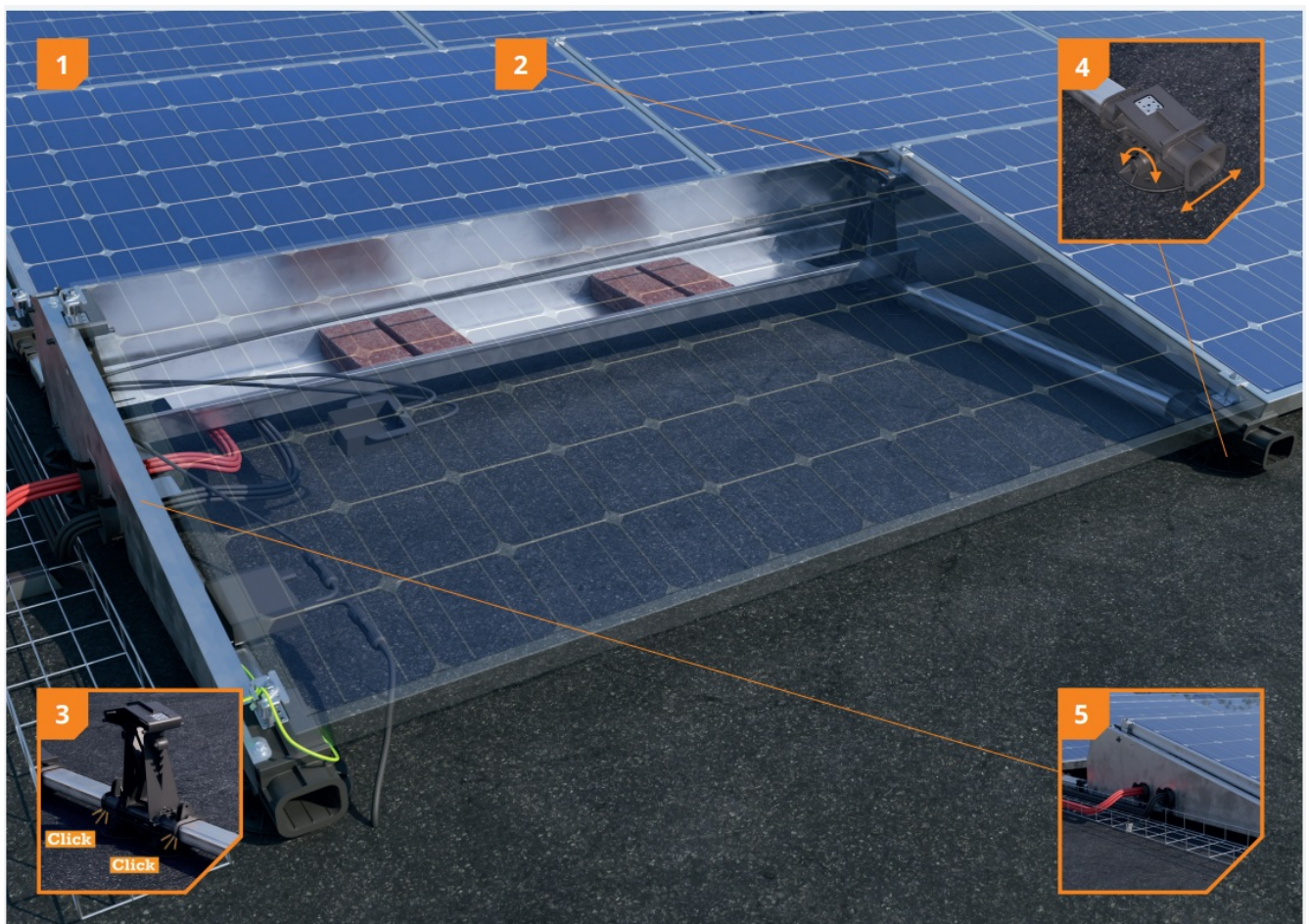
### 4. **With thermal decoupling**

The roof supports with movable connectors give the system space to expand thermally without damaging the roof material.

### 5. **With integrated cable management**

The cables and plugs of the solar panels can be safely and easily attached to the mounting solution.

With the cable exits in the wind deflectors and with the cable exit guides, cables can be stowed and guided in a safe way.



## Flat Fix Fusion Portrait

### Extension or carport?

Flat Fix Fusion is ideal for small roofs.

While in a landscape orientation you can only fit 3 panels on an extension of approximately 2.5 meters, with the portrait orientation you can fit as many as 5. Would you like to see whether your project can make use of this roof optimization? Check out our calculator and immediately download your packing slip and installation plan!



## SYSTEM COMPONENTS

- **Flat Fix Fusion roof support**

1007012



- **Flat Fix Fusion low base**

1007022

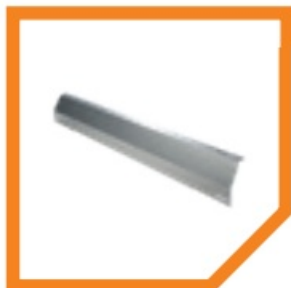
- **Flat Fix Fusion high base**

1007031



- **Flat Fix Fusion wind deflector rear\*/\*\***

1007201



- **Flat Fix Fusion wind deflector left\*\***

**1007224** with base profile 940mm

**1007226** with base profile 1030mm or 1077mm



- **Flat Fix Fusion wind deflector right\*\***

**1007225** with base profile 940mm

**1007227** with base profile 1030mm or 1077mm



- **Flat Fix Fusion ballast container\***

1007202



- **Flat Fix Fusion stabilizer\***

1007203



- **Flat Fix Fusion base profile 1007194**

**210mm** 1007121\*\* 940mm 1007195

**370mm** 1007137\*\* 1030mm 1007196

**550mm** 1007155\*\* 1077mm

**750mm** 1007175\*\*



## **PORTRAIT**

- **Flat Fix Fusion Low Base Portrait**

1007027



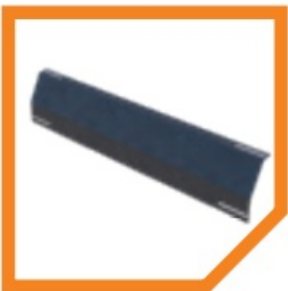
- **Flat Fix Fusion High Base Portrait**

1007037



- **Flat Fix Fusion Wind Deflector Rear Portrait Black**

1007231



- **Flat Fix Fusion Wind Deflector Left Portrait Black**

1007232



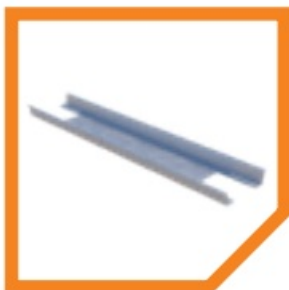
- **Flat Fix Fusion Wind Deflector Right Portrait Black**

1007233



- **Flat Fix Fusion Ballast Container Portrait**

1007230



- **Flat Fix Fusion Base Profile 1670mm**

1007197



## FASTENERS

- **Esdec mounting screw<sup>\*/\*\*</sup>**

6 x 55mm 1000655

6 x 70mm 1000670

6 x 12mm 1000612



- **Esdec screw**

6,0 x 25mm (self tapping) 1008085

6.3 x 42 mm SW10/T30 (self drilling) 1003016



## CLAMPS

- **Flat fix Fusion universal module clamp with bonding<sup>\*\*</sup>**

1003022



- **Flat Fix end clamp 30-50mm\*/\*\***

10043\_\_

10044\_\_ (black)



## ACCESSORIES

- **Flat Fix Fusion grounding spring**

1007502\*



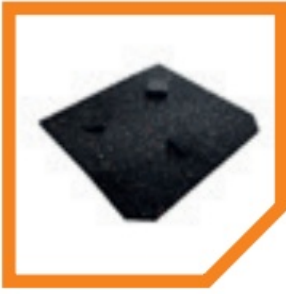
- **Flat Fix Fusion grounding clamp (6mm2)**

1007505



- **Flat Fix Fusion TPO Mat**

1007015



- **Flat Fix Fusion grounding bracket**

1007503



- **Flat Fix Fusion roof support adapter**

1007011



**Flat Fix Fusion low base extension**

1007022-WP



**Flat Fix Fusion Cable exit guide**

1005570



**Flat Fix Fusion MLPE Clip Light Weight up to 2kg\*\*\***

1007042



## Calculator

In the Esdec calculator you can manage and calculate all your projects, for both pitched and flat roofs. Flat roofs: our user-friendly tool lets you perform technical calculations for roof heights of up to 20 metres.



Go to [esdec.com/en/calculator](https://esdec.com/en/calculator)



## Warranty

- Use of premium materials
- Thoroughly tested
- 20-year product warranty

## CUSTOMER SUPPORT

### Esdec

Londenstraat 16  
7418 EE Deventer  
Nederland



31 850 702 000



[info@esdec.com](mailto:info@esdec.com)

# ESDEC



**Documents / Resources**

ESDEC



[ESDEC FlatFix Fusion The Versatile Click System For Flat Roofs](#) [pdf] Instruction Manual FlatFix Fusion, FlatFix Fusion The Versatile Click System For Flat Roofs, The Versatile Click System For Flat Roofs, Versatile Click System For Flat Roofs, Click System For Flat Roofs, Flat Roofs, Roofs

## References

- [E Calculator - Esdec](#)
- [E Esdec - Building value for solar professionals](#)
- [User Manual](#)

[Manuals+](#), [Privacy Policy](#)

This website is an independent publication and is neither affiliated with nor endorsed by any of the trademark owners. The "Bluetooth®" word mark and logos are registered trademarks owned by Bluetooth SIG, Inc. The "Wi-Fi®" word mark and logos are registered trademarks owned by the Wi-Fi Alliance. Any use of these marks on this website does not imply any affiliation with or endorsement.