




[Home](#) » [Escrow Tech](#) » **Escrow-Tech ETLTS001 Carbon-Adjust Temperature and Humidity Sensor User Manual** 

Contents [[hide](#)]

- [1 Escrow-Tech ETLTS001 Carbon-Adjust Temperature and Humidity Sensor](#)
- [2 Product Information](#)
- [3 Product Usage Instructions](#)
- [4 INTRODUCTION](#)
- [5 Product Parameters](#)
- [6 Device Power](#)
- [7 How to set up](#)
- [8 Frequently Asked Questions](#)
- [9 Documents / Resources](#)
 - [9.1 References](#)



Escrow-Tech

Escrow-Tech ETLTS001 Carbon-Adjust Temperature and Humidity Sensor



Product Information

Specifications

- **Product Name:** Wi-Fi Temperature & Humidity Sensor With Backlight
- **Model:** Version 25/ETLTS001/1
- **Power Source:** Battery
- **Connectivity:** Wi-Fi, Bluetooth
- **Compatibility:** Works with Carbon-Adjust app, Amazon Alexa, Google Assistant

Product Usage Instructions

Device Power

Please open the back cover of the product before use, and remove the battery insulation sheet to power the device.

Setup Instructions

1. Scan the QR code or download the Carbon-Adjust app from the Google Play Store or APP Store.
2. Turn on Bluetooth on your mobile phone, open the app, and press and hold the sensor for 5 seconds until the WiFi icon displays.

3. Connect to WiFi, set temperature and humidity values for alarms.
4. Share devices with family members for monitoring.
5. Monitor temperature and humidity on the screen in real-time.
6. Register the app with an email address and add the device to the Wi-Fi network.

Settings

- Set upper and lower limits for temperature/humidity.
- Adjust temperature and humidity ranges.
- Customise temperature/humidity sensitivity.

Additional Features

- **Voice Control:** Works with Amazon Alexa and Google Assistant.

INTRODUCTION

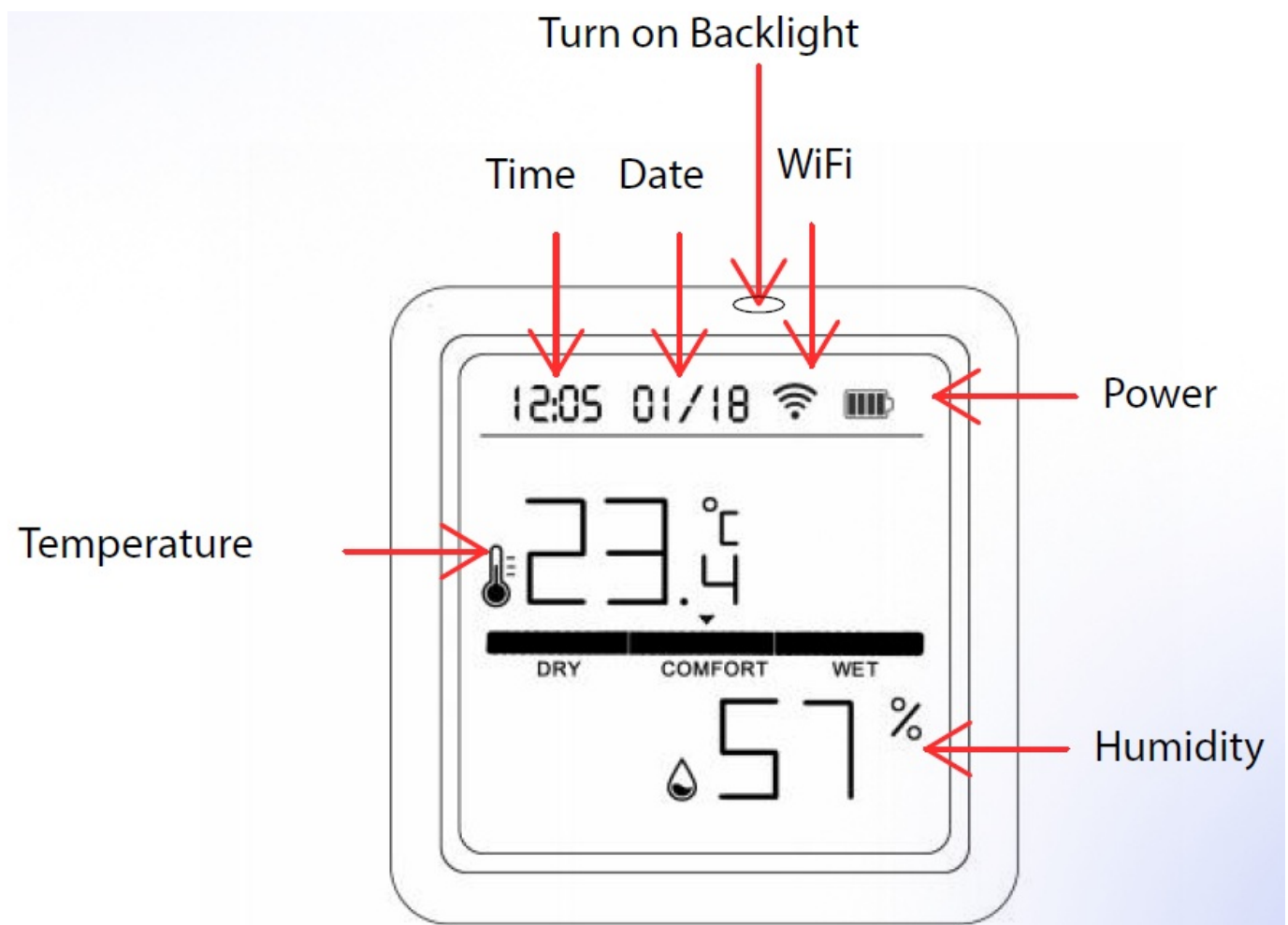
Please read this manual carefully before use and keep it for future reference.

Product Parameters

- **Size:** 55*55*25mm
- **Input voltage:** DC4.5V LR03*3
- **Quiescent current:** <30uA
- **Low power undervoltage:** <2.7V
- **Working temperature:** -10°C~55°C
- **WiFi:** 802.11b/g/n 2.4GHz
- **Working humidity:** 10%~90% RH
- **Product model:** ETLTS001

Device Power

Please open the back cover of the product before use, and remove the battery insulation sheet to power the device.

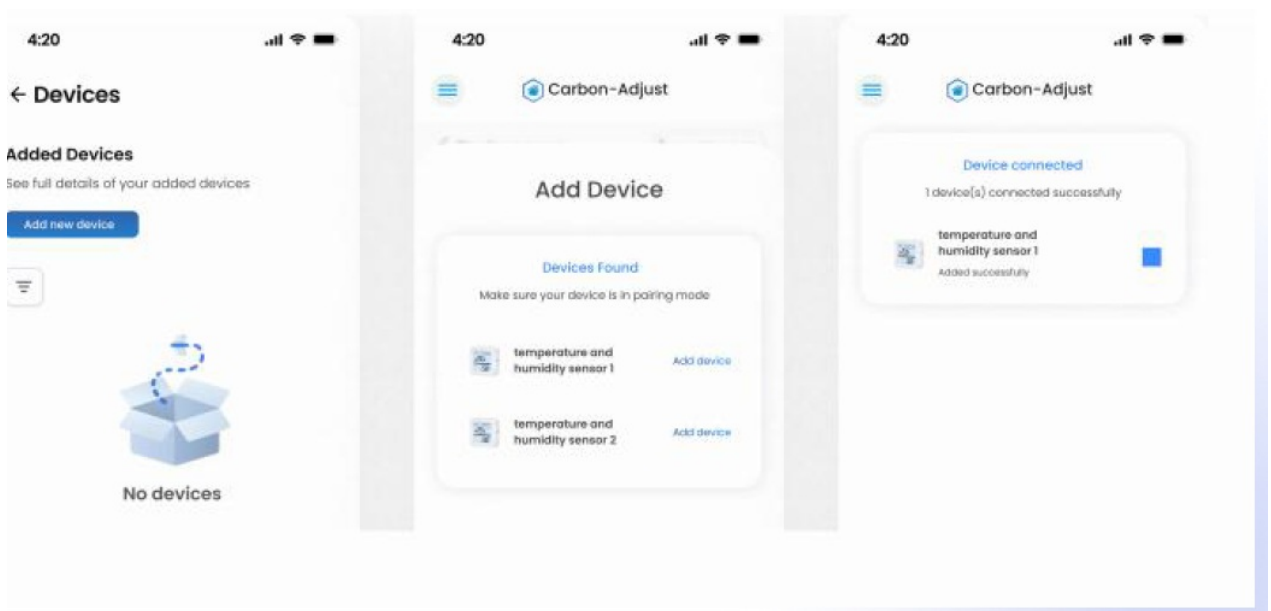


How to set up

1. First, scan the QR code with your smartphone, or search the Carbon-Adjust app in the Google Play Store or APP Store to download and install the app.
2. Register the app with an email address.

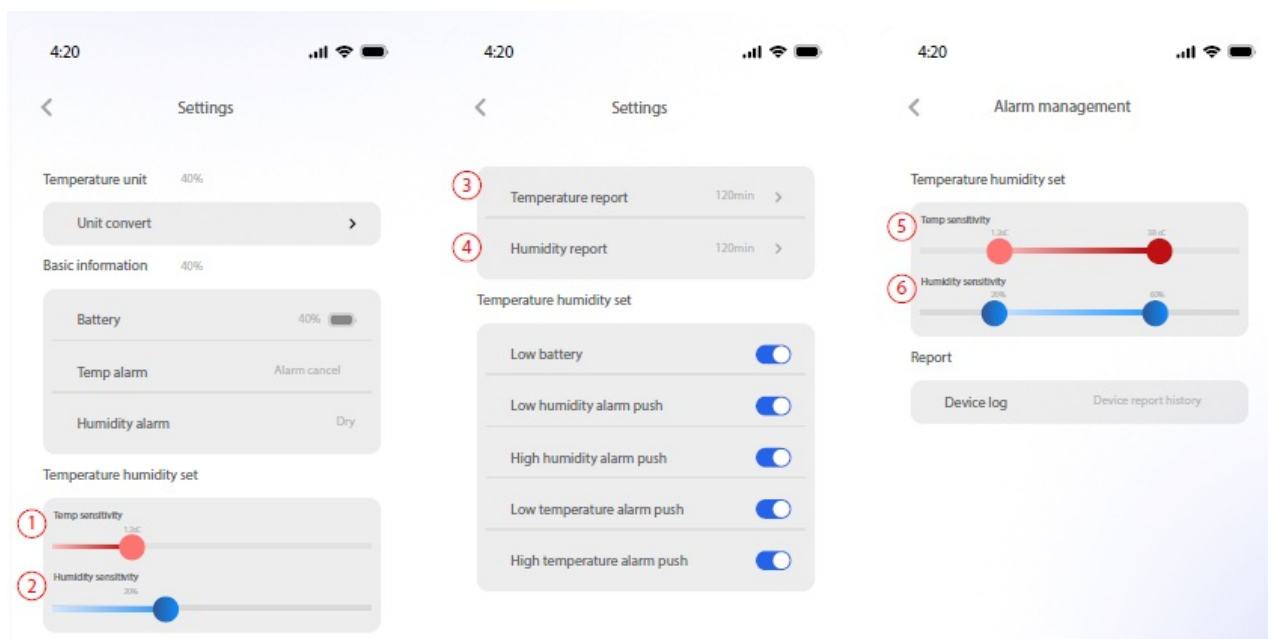


- **Bluetooth mode:** First, turn on Bluetooth on your mobile phone.
- Open the Carbon-Adjust app and choose “+”. I press and hold the sensor for 5 seconds, I the WiFi icon will indicate on the sensor display.
- After this, you will see devices to be added to your mobile app.
- Finally, press “Go” to add. It will connect to the Wi-Fi network automatically.**



3. After connecting to WiFi successfully, click the sensor icon to enter the app interface and make some settings.

- You can preset the value of temperature and humidity for alarming effects from here.



- 1 2 Temperature/humidity sensitivity:**
- Sensor temperature/humidity value will synchronise to the app when the upper/lower preset temperature/humidity values. For example, if the temperature is 28° and humidity is 70%, the temperature/ humidity sensitivity is $\pm 0.6/6\%$, then the sensor temperature/humidity value will synchronise to the app when the temperature/humidity is 28.6° or 27.4° /76% or 64%. (Factory default: temperature sensitivity is 0.6°, humidity sensitivity is 6%)
- Labelling requirements**
- This device complies with part 15 of the FCC Rules. Operation is subject to the

following two conditions:

- This device may not cause harmful interference,
- This device must accept any interference received, including interference that may cause undesired operation.

- **Information to the user**

- Any Changes or modifications not expressly approved by the party responsible for compliance could void the user's authority to operate the equipment.

- **3 4 Temperature/humidity report cycle:** Time setting of sensor temperature and humidity value synchronisation to the app (factory default is 120 minutes).

- **5 6 Temperature/humidity upper and lower limits are set:**

- The Setting of the temperature/humidity range.

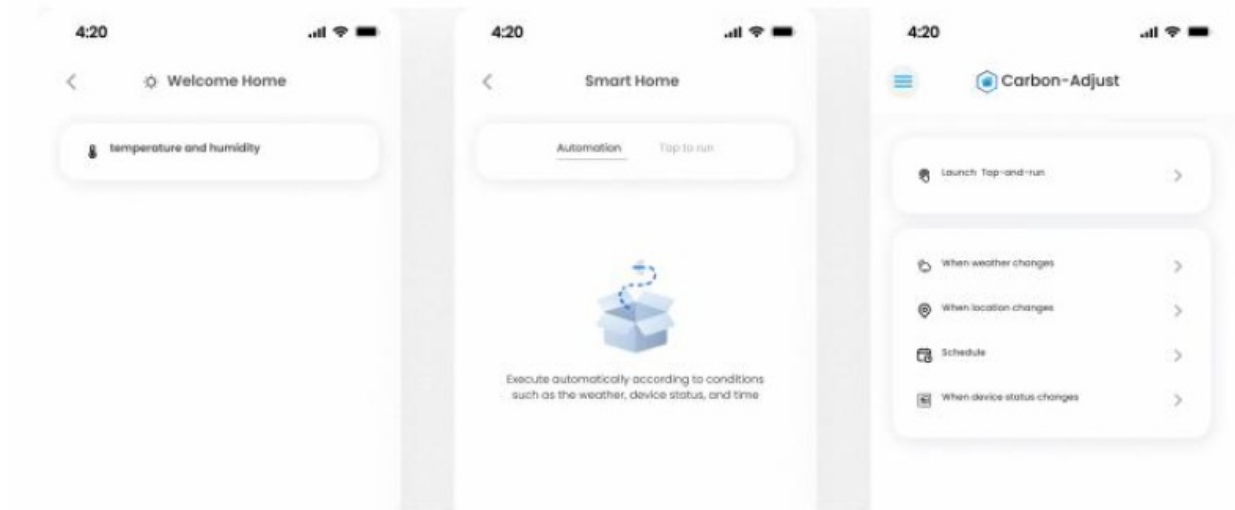
- **Information to the user**

- **Note:** This equipment has been tested and found to comply with the limits for a Class B digital device, under part 15 of the FCC Rules. These limits are designed to provide reasonable protection against harmful interference in a residential installation. This equipment generates uses and can radiate radio frequency energy and, if not installed and used under the instructions, may cause harmful interference to radio communications. However, there is no guarantee that interference will not occur in a particular installation. If this equipment does cause harmful interference to radio or television reception, which can be determined by turning the equipment off and on, the user is encouraged to try to correct the interference by one or more of the following measures:

- Reorient or relocate the receiving antenna.
- Increase the separation between the equipment and receiver.
- Connect the equipment to an outlet on a circuit different from that to which the receiver is connected.
- Consult the dealer or an experienced radio/TV technician for help.

4. **Intelligent Linkage:** When the ambient environment changes, you can do intelligent linkage. For example, the air conditioner will be on automatically when the room temperature surpasses 35°~.

- The humidifier will spray when the humidity is lower than 20% RH.



- **RF warning for Mobile device:**

- This equipment complies with FCC radiation exposure limits set forth for an uncontrolled environment. This equipment should be installed and operated with minimum distance 20cm between the radiator & your body.

5. **Share devices:** You can share your added devices with your family members, so they can also monitor the ambient environment.
6. **Screen on Sensor:** You can in real-time, monitor the temperature and humidity on the screen directly.
7. **Temperature Unit Selection in App:** You can choose °~ or °° as the temperature unit through the app.
8. **Third-party Voice Control:** Works with Amazon Alexa and Google Assistant.

Carbon-Adjust

- Visit our website for updated Terms and Conditions
- Made in China for Escrow-Tech Limited, Castlemead, Lower Castle Street, Bristol, BS1 3AG




Frequently Asked Questions

- **Q: How do I connect the sensor to WiFi?**
 - **A:** Follow the setup instructions provided in the manual to connect the sensor to WiFi. Make sure to download the Carbon-Adjust app and register the device.
- **Q: Can I share the device with family members?**
 - **A:** Yes, you can share added devices with family members so they can also

monitor the ambient environment through the app.

Documents / Resources

	<p>Escrow-Tech ETLTS001 Carbon-Adjust Temperature and Humidity Sensor [pdf] User Manual</p> <p>ETLTS001, ETLTS001 Carbon-Adjust Temperature and Humidity Sensor, Carbon-Adjust Temperature and Humidity Sensor, Adjust Temperature and Humidity Sensor, Temperature and Humidity Sensor, Humidity Sensor</p>
---	--

References

- [User Manual](#)

Escrow

Tech

Adjust Temperature and Humidity Sensor, Carbon-Adjust Temperature and Humidity Sensor, Escrow Tech, ETLTS001, ETLTS001 Carbon-Adjust Temperature and Humidity Sensor, Humidity Sensor, Temperature and Humidity Sensor

Leave a comment

Your email address will not be published. Required fields are marked *

Comment *

Name

Email

Website

☐ Save my name, email, and website in this browser for the next time I comment.

Post Comment

Search:

e.g. whirlpool wrf535swhz

Search

[Manuals+](#) | [Upload](#) | [Deep Search](#) | [Privacy Policy](#) | [@manuals.plus](#) | [YouTube](#)

This website is an independent publication and is neither affiliated with nor endorsed by any of the trademark owners. The "Bluetooth®" word mark and logos are registered trademarks owned by Bluetooth SIG, Inc. The "Wi-Fi®" word mark and logos are registered trademarks owned by the Wi-Fi Alliance. Any use of these marks on this website does not imply any affiliation with or endorsement.