



**CRA122
Series
Setpoint
Temperature
Controller**



ESBE CRA122 Series Setpoint Temperature Controller Instruction Manual

[Home](#) » [ESBE](#) » ESBE CRA122 Series Setpoint Temperature Controller Instruction Manual 

Contents

- [1 ESBE CRA122 Series Setpoint Temperature Controller](#)
- [2 Specification](#)
- [3 CRA122 Package Contents](#)
- [4 Assembly Orientation](#)
- [5 Temperature Sensor Installation](#)
- [6 Wiring](#)
- [7 Selection Buttons](#)
- [8 Factory Reset](#)
- [9 Setting Rotation Time](#)
- [10 Maximum Temperature Limitation](#)
- [11 Changing of Setpoint](#)
- [12 Actuator Rotation Adjustment](#)
- [13 Frequently Asked Questions](#)
- [14 Documents / Resources](#)
 - [14.1 References](#)



ESBE CRA122 Series Setpoint Temperature Controller



Specification

- Ambient temp: 23°F to 131°F (-5°C to 55°C)
- Flow temp. range: 4°F to 200°F (5°C to 95°C)
- Power supply: 24 ± 10%, 60 Hz
- Power consumption: 3VA
- Max run time at max speed: 120 seconds
- Weight: 2 lbs (0,9 kg)



3MG, 4MG



3G, 4G



3F, 4F up to 6"

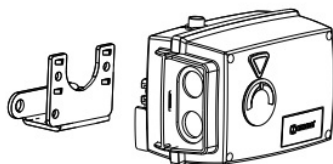


VRG valves + Mounting Kit
(ordered separately
code NO: 193B1616)

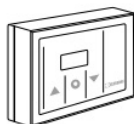
CRA122 Package Contents



1

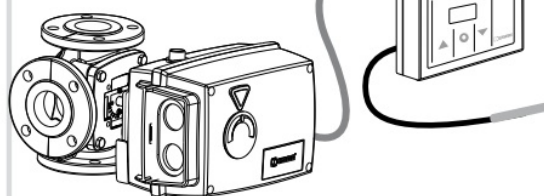


2

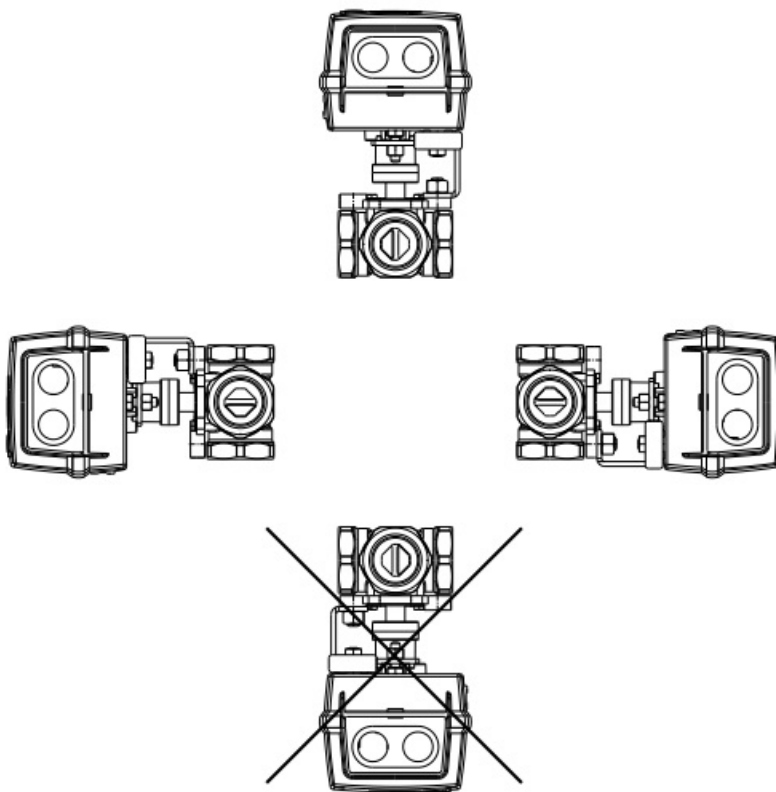


3

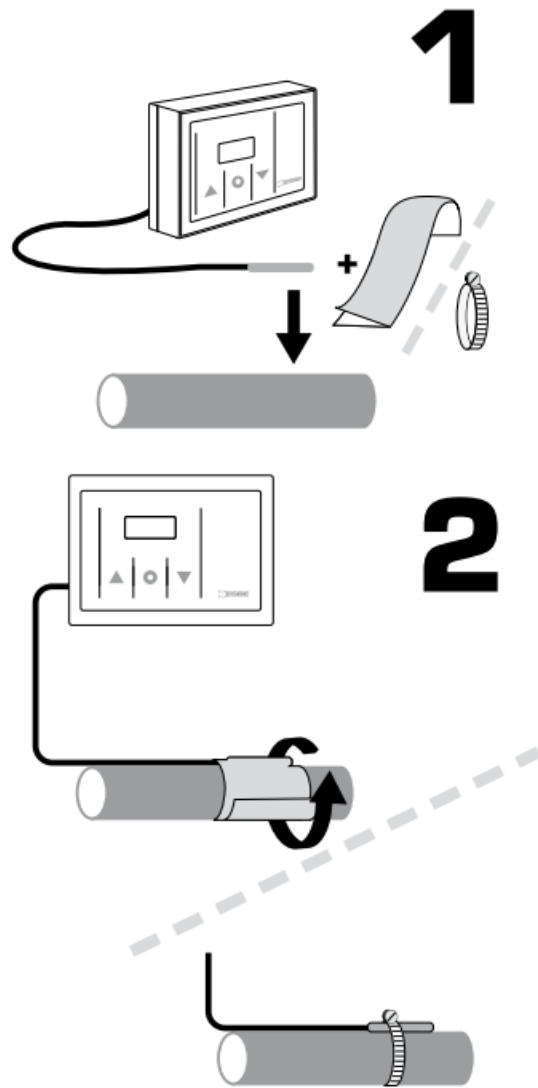
⚡ Power source
24 VAC



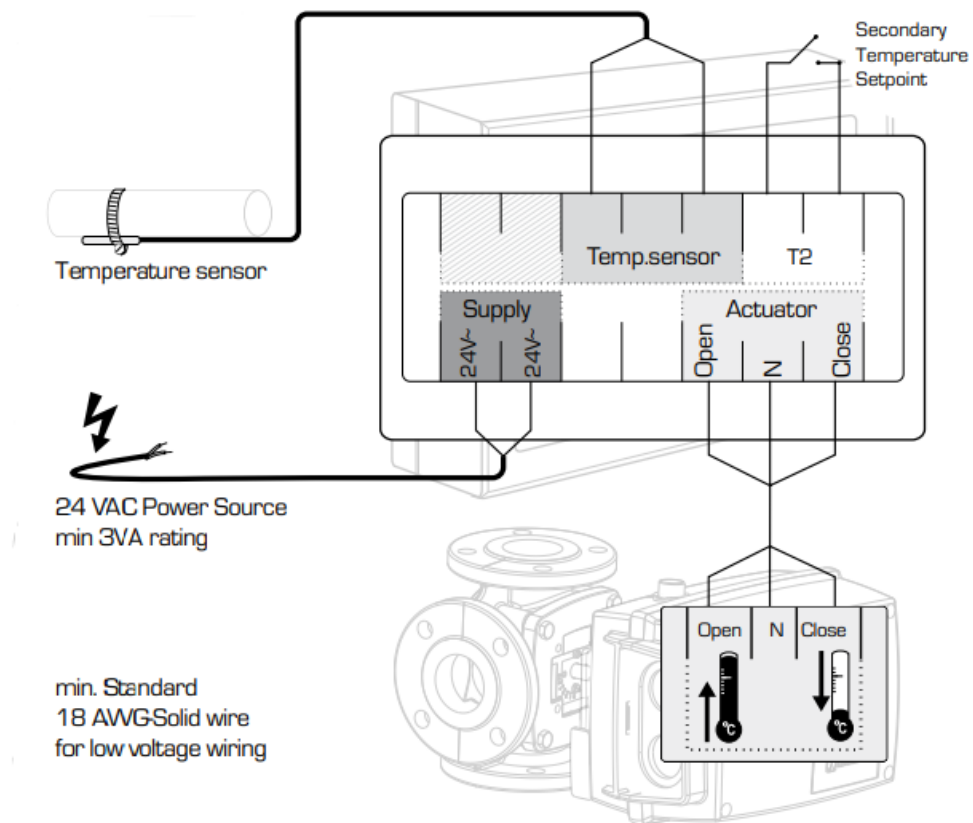
Assembly Orientation



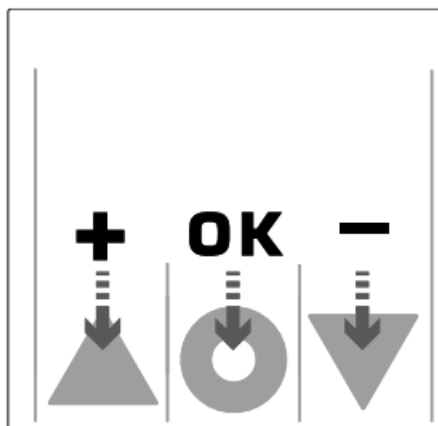
Temperature Sensor Installation



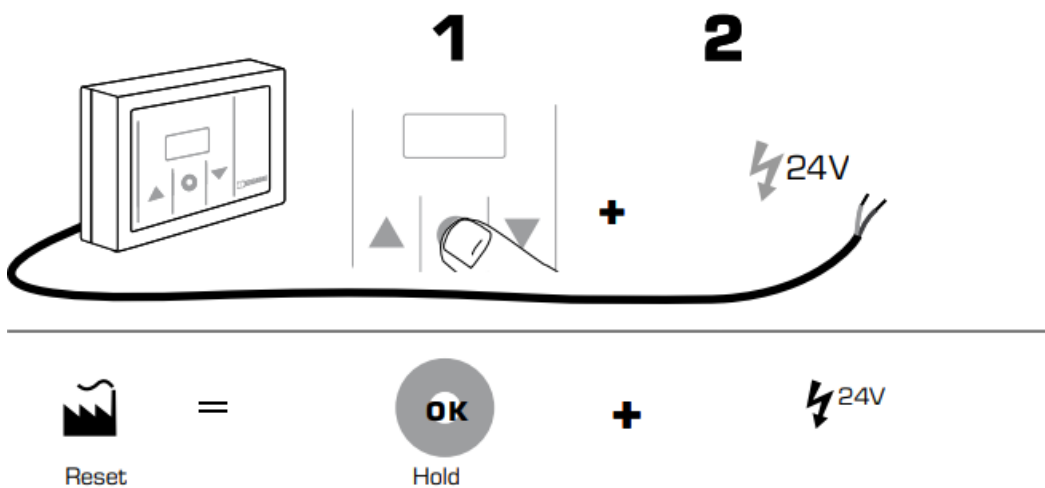
Wiring



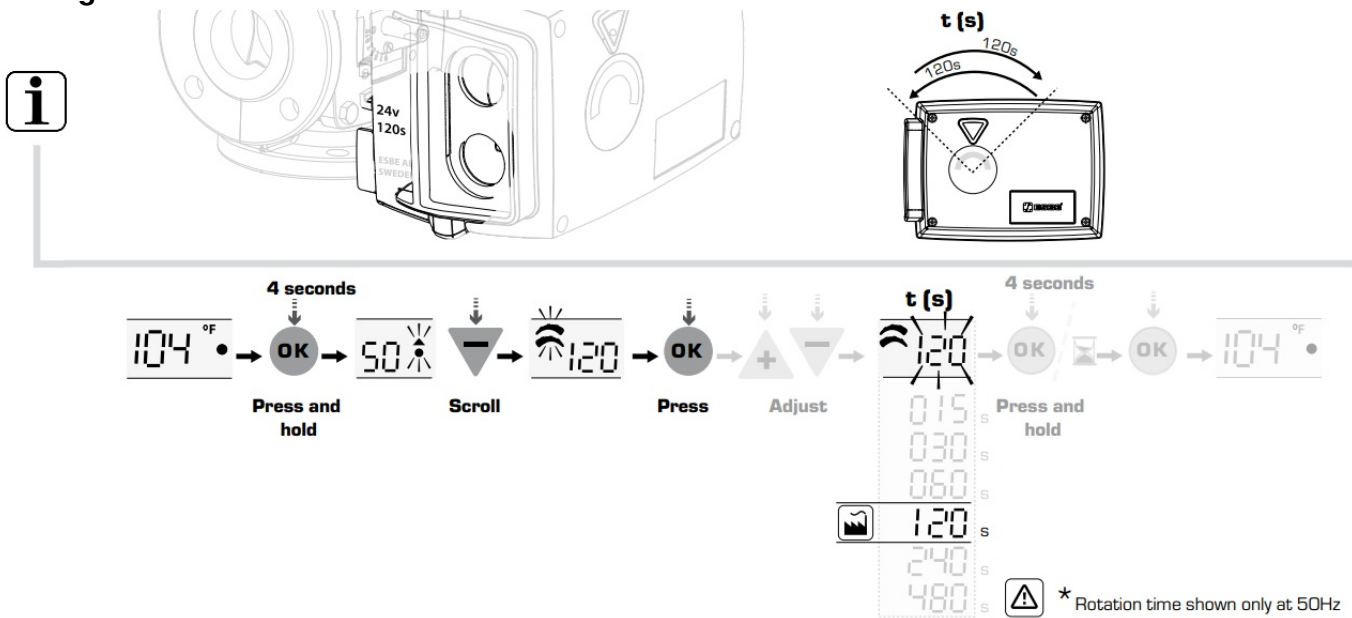
Selection Buttons



Factory Reset

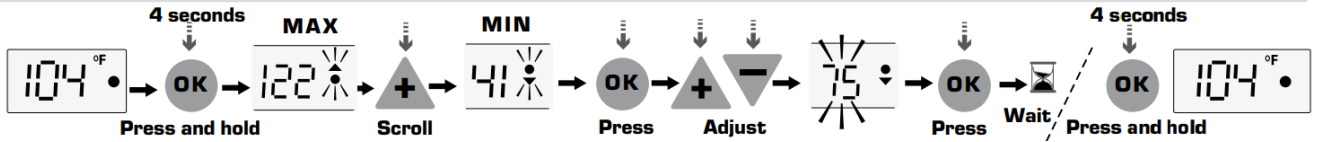
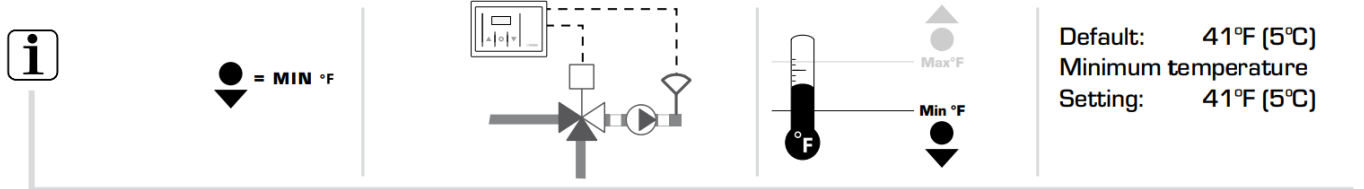
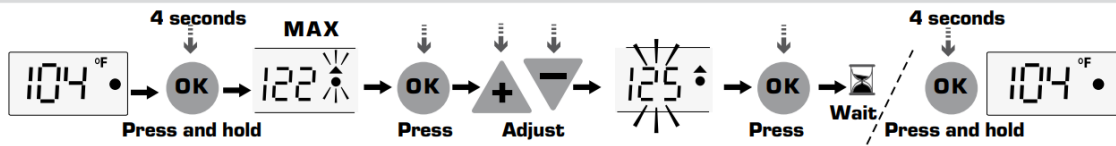
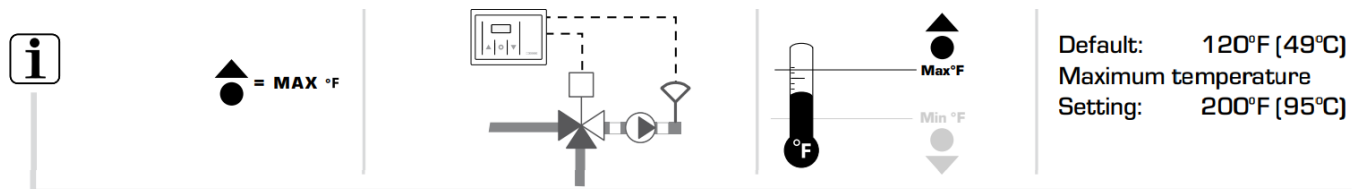


Setting Rotation Time

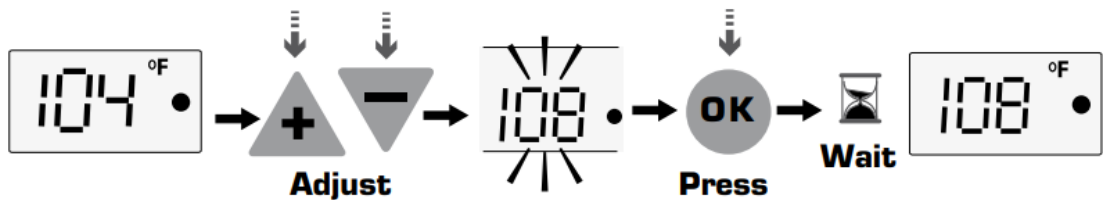
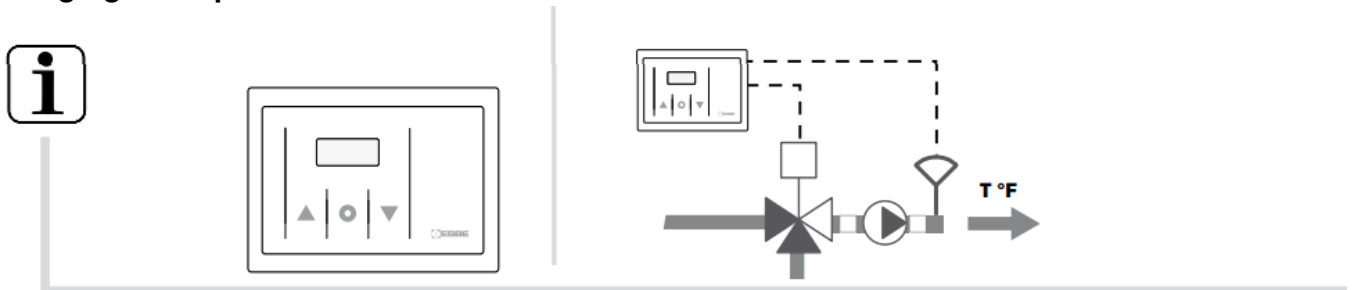


24VAC	
*at 50Hz	at 60Hz
15 sec	12 sec
30 sec	25 sec
60 sec	50 sec
120 sec	100 sec
240 sec	200 sec
480 sec	398 sec

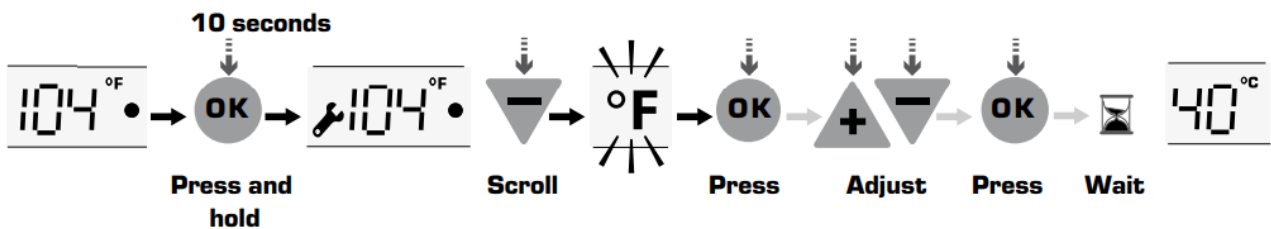
Maximum Temperature Limitation



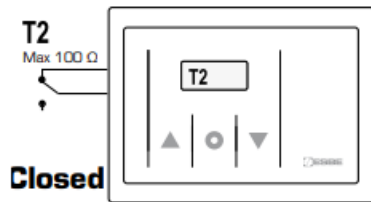
Changing of Setpoint



°F / °C Temperature Unit Display

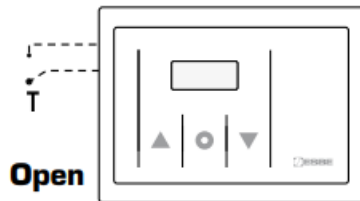
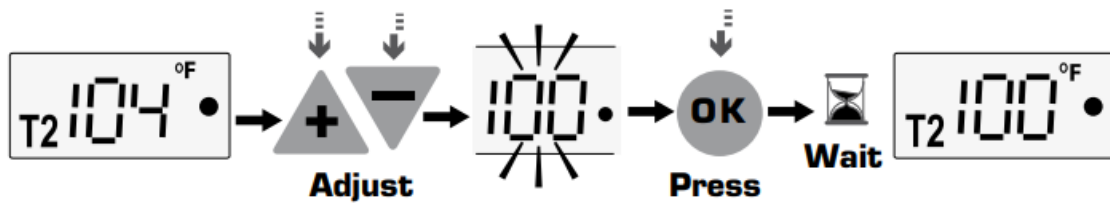


T2, Secondary Temperature Setpoint

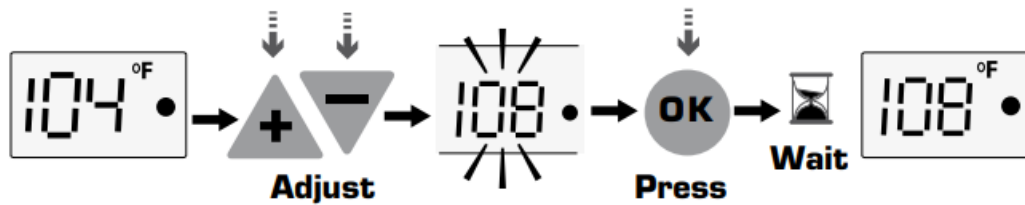


T2 : Secondary Temperature Setting

Externally Wired Relay



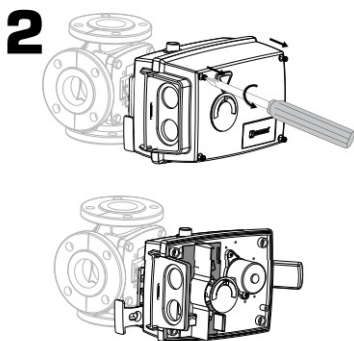
T : Primary Temperature Setting



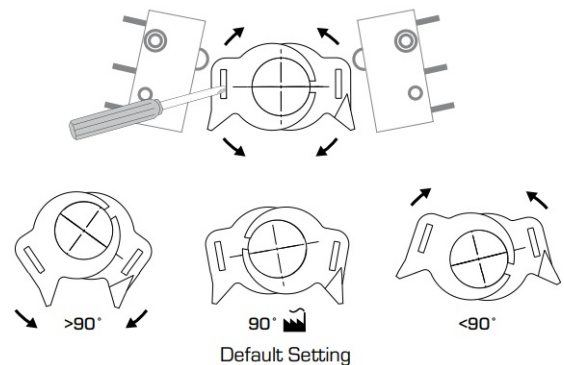
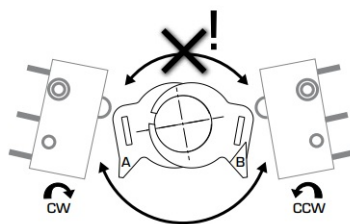
Actuator Rotation Adjustment

if actuator rotation requires more than or less than 90° actuator rotation

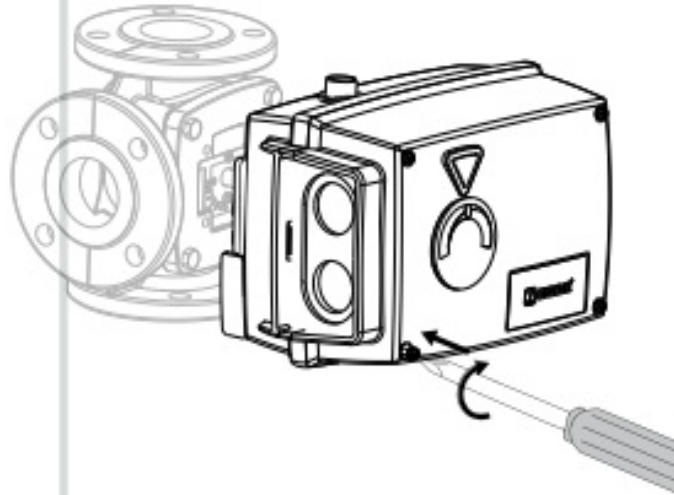
1 
Remove power to the actuator



3



4



5



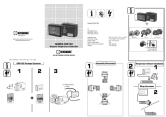
Distributed by Danfoss in North America

- www.NA.Heating.Danfoss.com
- www.esbe.eu

Frequently Asked Questions

- **Q: How do I reset the controller to factory settings?**
 - A: To perform a factory reset, press and hold the reset button for a few seconds until the device resets.
- **Q: What is the power source requirement for the CRA122?**
 - A: The CRA122 requires a power source of 24 VAC for operation.
- **Q: How do I install the temperature sensors?**
 - A: Wrap the temperature sensor properly and follow the installation instructions provided in the manual for accurate installation.

Documents / Resources



[ESBE CRA122 Series Setpoint Temperature Controller](#) [pdf] Instruction Manual
CRA122, CRA100, CRB100, CRA122 Series Setpoint Temperature Controller, CRA122 Series,
Setpoint Temperature Controller, Temperature Controller

References

- [User Manual](#)

Manuals+, Privacy Policy

This website is an independent publication and is neither affiliated with nor endorsed by any of the trademark owners. The "Bluetooth®" word mark and logos are registered trademarks owned by Bluetooth SIG, Inc. The "Wi-Fi®" word mark and logos are registered trademarks owned by the Wi-Fi Alliance. Any use of these marks on this website does not imply any affiliation with or endorsement.