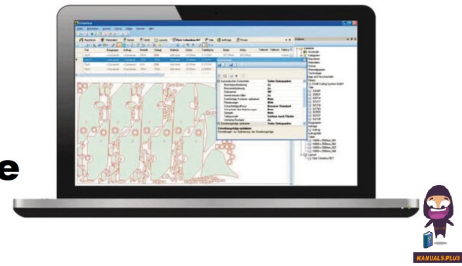


**ESAB®**  
**PAB**  
**System**  
**Software**  
**Tutorial**



## ESAB PAB System Software Tutorial Instruction Manual

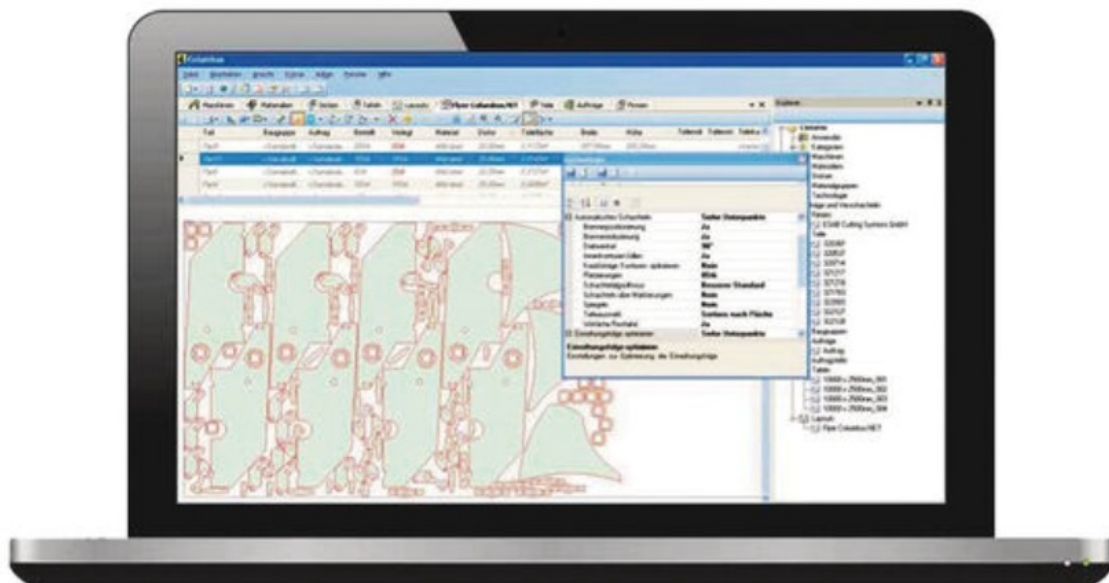
[Home](#) » [ESAB](#) » ESAB PAB System Software Tutorial Instruction Manual 

### Contents

- [1 ESAB PAB System Software Tutorial](#)
- [2 System software upgrade/downgrade PAB units](#)
- [3 Documents / Resources](#)
  - [3.1 References](#)



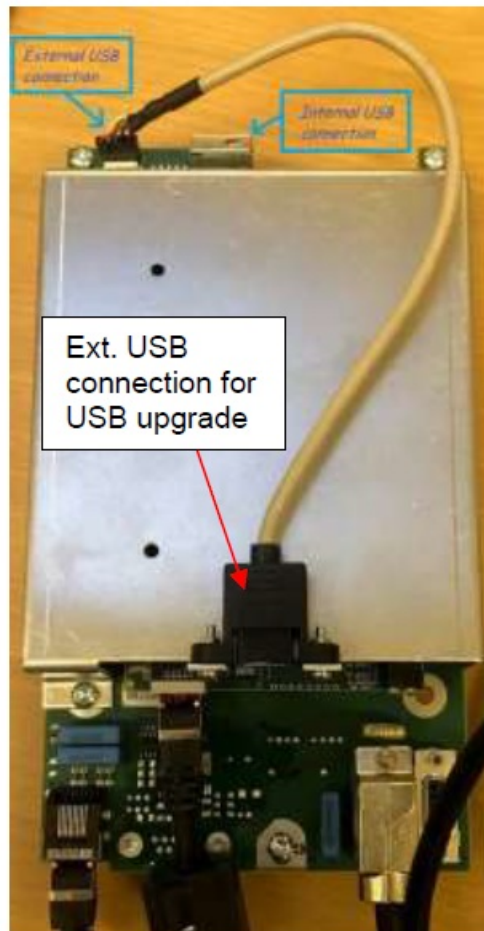
### ESAB PAB System Software Tutorial



### System software upgrade/downgrade PAB units

## Before performing a software upgrade/downgrade

- Check PAB hardware version. Old PAB with hardware version 10 (only one USB connector) will not work with software 5.00A and newer.
- Upgrade the software from the external USB connector on new PAB, see picture 1.



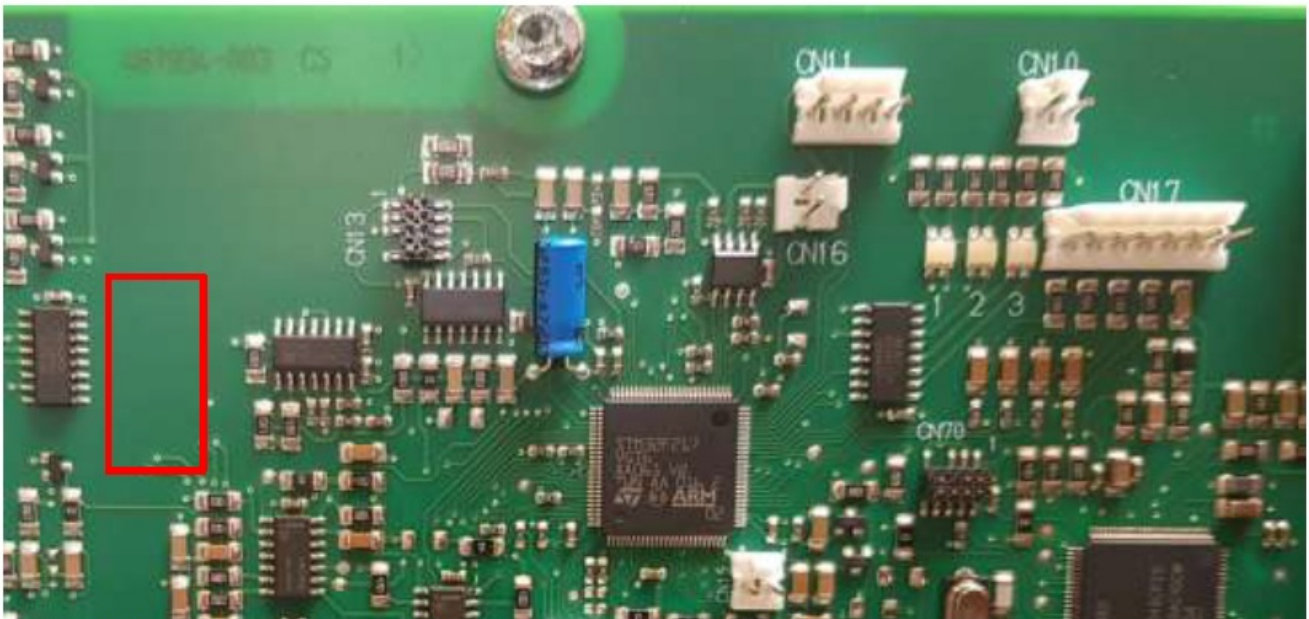
Picture 1.

- Before starting the software update/downgrade: check error log for CAN-bus communication errors. If they exist: check the CAN-bus and CAN-bus termination resistors. If the CAN error coincides with ESAT search for units, then disregard the error 60 for LAF and TAF and 8160 for Aristo 1000.
- Upgrade & downgrade: There are different PAB USB structure files for different PAB software versions. PLC software must be adapted to the corresponding PAB fieldbus profile version in "PAB USB structure file" in Partner login.
- The integrator is responsible for the compatibility between the PLC and the PAB.
- Downgrade: New system configuration files and weld data files are not always downward compatible.
- Upgrade: System configuration files and weld data files will be updated. New settings will be set to default values.
- Upgrade system to 1.39A or downgrade to 1.39A or later: The PAB USB file structure will be replaced. The config.xml file will not be replaced since it contains user defined settings:

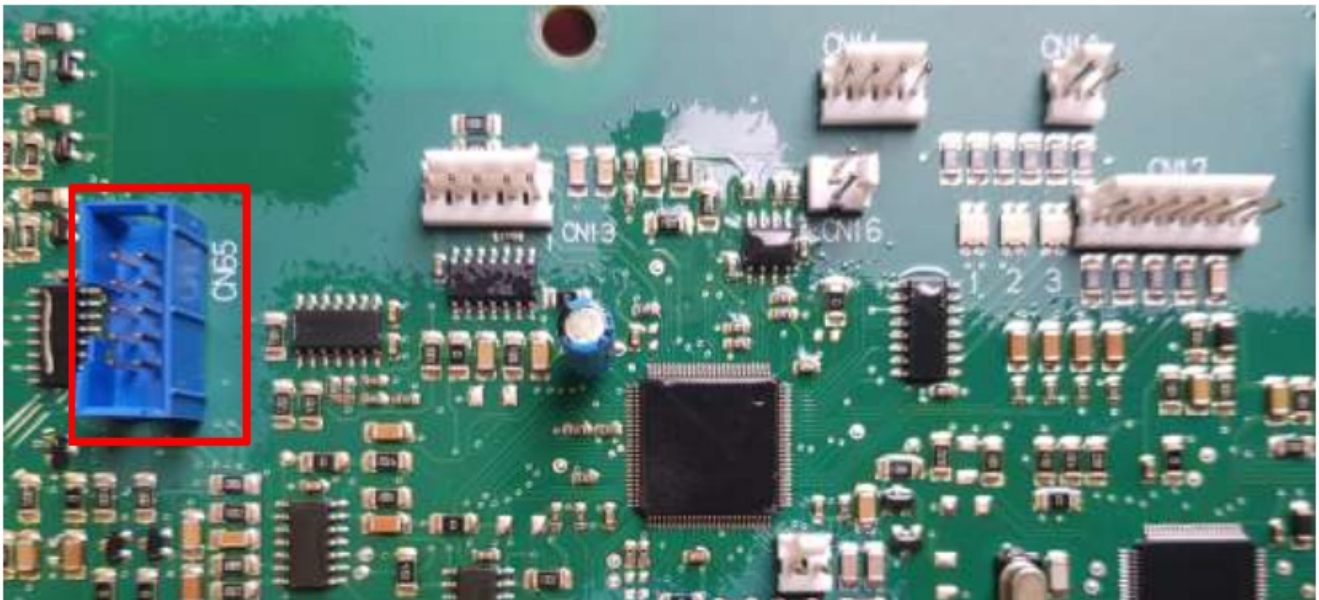
```
<?xml version="1.0" encoding="iso-8859-1"?>
<GatewayObjects>
<DeviceConfig>
<NodeAddress>5</NodeAddress>
```

```
<EthernetAdress>192.168.0.5</EthernetAdress>  
<UseMotorCard>1</UseMotorCard>  
<MeasureFrequency>1</MeasureFrequency>  
</DeviceConfig>  
</GatewayObjects>
```

- Upgrade/downgrade to system software version older than 1.39A: The PAB USB structure has to be replaced manually. The config.xml file must not be replaced.
- The new version of Aristo 1000 AC/DC control board, see picture 2, will require new software (version 3.xxx) and is not compatible with older software of the old control board.



Picture 2. New version of Aristo 1000 control board **without** CN 65.



Picture 3. Old version of Aristo 1000 control board **with** CN 65.

- When upgrading a system without FAA make sure the “<UseMotorCard>” in config.xml file is set to “0”.

#### During upgrading process and finalization of the upgrade.

- After successful system upgrade, the orange heat lamp on the power source will start to blink, from system



software version 1.39A.

- Max time for a complete system upgrade is 40 min.
- When software upgrade is done, restart the ESAB systems (shut-down and wait 15 seconds before power on again).
- How to check upgraded software?

**Read software versions on:**

- PAB web interface.
- PLC (if implemented).
- Unit information with ESAT.

**Upgrading problems or failure.**

- Check if all units and corresponding software versions are visible with ESAT , PLC or PAB web. interface.
- Switch off the power source, remove the USB stick and check the content of the USB stick. If there is a “ReadSettingsBack.txt” file and a “UpdateSystem.XML” file then insert the USB stick and switch on the power source again to continue the upgrade of the software.
- If the “ReadSettingsBack.txt” file and the “UpdateSystem.XML” file are both missing then the upgrade is completed. The files will have been automatically removed after completed upgrade.

ftpsrv	2024-06-03 12:02	File folder	
USBStick	2024-05-27 09:35	File folder	
aristo1000.attr	2024-02-16 11:59	ATTR File	6 KB
LogProgLoad.txt	2024-06-03 13:30	Text Document	1 KB
MatchingSoftwareVersions.XML	2024-06-03 14:08	Microsoft Edge HTML Document	1 KB
PEK509A_Aristo1000212A_MCA143A.fcf	2024-05-03 12:58	FCF File	4 658 KB
ReadSettingsBack.txt	2024-06-03 13:28	Text Document	1 KB
reset.txt_	2024-06-03 13:26	TXT_ File	1 KB
Software upgrade instruction_GB.pdf	2023-09-15 10:55	Adobe Acrobat Document	537 KB
Update.txt_	2024-06-03 13:26	TXT_ File	1 KB
UpdateSystem.XML	2024-05-03 12:57	Microsoft Edge HTML Document	1 KB


If upgrading fails, read and save the “LogProgLoad.txt” file. Contact Helpdesk for support.

For contact information visit <http://esab.com>



ESAB AB, Lindholmsallén 9, Box 8004, 402 77 Gothenburg, Sweden, Phone +46 (0) 31 50 90 00



## Documents / Resources

 <p>PAB system software tutorial</p> <p>Integration manual</p>	<p><a href="#">ESAB PAB System Software Tutorial</a> [pdf] Instruction Manual</p> <p>PAB System Software Tutorial, System Software Tutorial, Software Tutorial, Tutorial</p>
---	--

## References

-  [ESAB Manual Finder](#)
-  [ESAB Manual Finder](#)
- [User Manual](#)

[Manuals+](#), [Privacy Policy](#)

This website is an independent publication and is neither affiliated with nor endorsed by any of the trademark owners. The "Bluetooth®" word mark and logos are registered trademarks owned by Bluetooth SIG, Inc. The "Wi-Fi®" word mark and logos are registered trademarks owned by the Wi-Fi Alliance. Any use of these marks on this website does not imply any affiliation with or endorsement.