



# ERICO CSBBRS2EG Branch Line Restraint Instruction Manual

[Home](#) » [ERICO](#) » ERICO CSBBRS2EG Branch Line Restraint Instruction Manual 

## Contents

- [1 ERICO CSBBRS2EG Branch Line Restraint](#)
- [2 Product Information](#)
- [3 Product Usage Instructions](#)
- [4 SAFETY INSTRUCTIONS](#)
- [5 installation](#)
- [6 Documents / Resources](#)
  - [6.1 References](#)
- [7 Related Posts](#)



## ERICO CSBBRS2EG Branch Line Restraint



## Product Information

- **Product Name:** Branch Line Restraint
- **Model:** CSBBRS2EG
- **Compatibility:** Suitable for concrete or wood

- **Part Numbers:** NA
- **Part Number:** CSBBRS2EG, CSBBRS2MEG; EU
- **Article Number:** –402240
- **Rod Sizes:** 3/8, 1/2, M10, M12

### Maximum Unbraced Length (L)

- **L/r = 100:** 198mm (10)
- **L/r = 200:** 397mm (20)
- **L/r = 300:** 595mm (30)
- **L/r = 400\*:** 794mm (40)

**Note:** The  $L/r = 400$  value is not provided in the text.

### Product Usage Instructions

1. Orient the part in the direction needed for installation.
2. If installing in concrete, pre-drill a hole using a 3/16 taper bit drill at least 2-1/4 deep. Clear the hole of dust and other material. If installing in wood, proceed to step 3.
3. Use a standard screw gun with a depth-sensitive nose piece or clutch for correct seating of the fastener. Use a size 5/16 [8mm] hex head socket or flat head screwdriver. Drive the anchor in a continuous motion until the fastener is fully seated. The recommended Powers Fastener part number is 2722sd. For more information, visit [www.powers.com](http://www.powers.com).
4. Rotate the barrel to the appropriate side (3/8-16 or 1/2-13) based on the threaded rod needed for the application.
5. Fully thread the rod into the barrel nut.

### Important Warnings

- ERICO products must be installed and used only as indicated in ERICO product instruction sheets and training materials. Instruction sheets are available at [www.erico.com](http://www.erico.com) and from your ERICO customer service representative.
- ERICO products must never be used for a purpose other than the purpose for which they were designed or in a manner that exceeds specified load ratings.
- All instructions must be completely followed to ensure proper and safe installation and performance.
- Improper installation, misuse, misapplication, or failure to follow ERICO's instructions and warnings may cause product malfunction, property damage, serious bodily injury, and death.
- Products manufactured using spring steel components should only be used in a non-corrosive indoor environment.
- All pipe supports, hangers, intermediate components, and structural attachments must ONLY be used as described herein and are NEVER to be used for any other purposes.

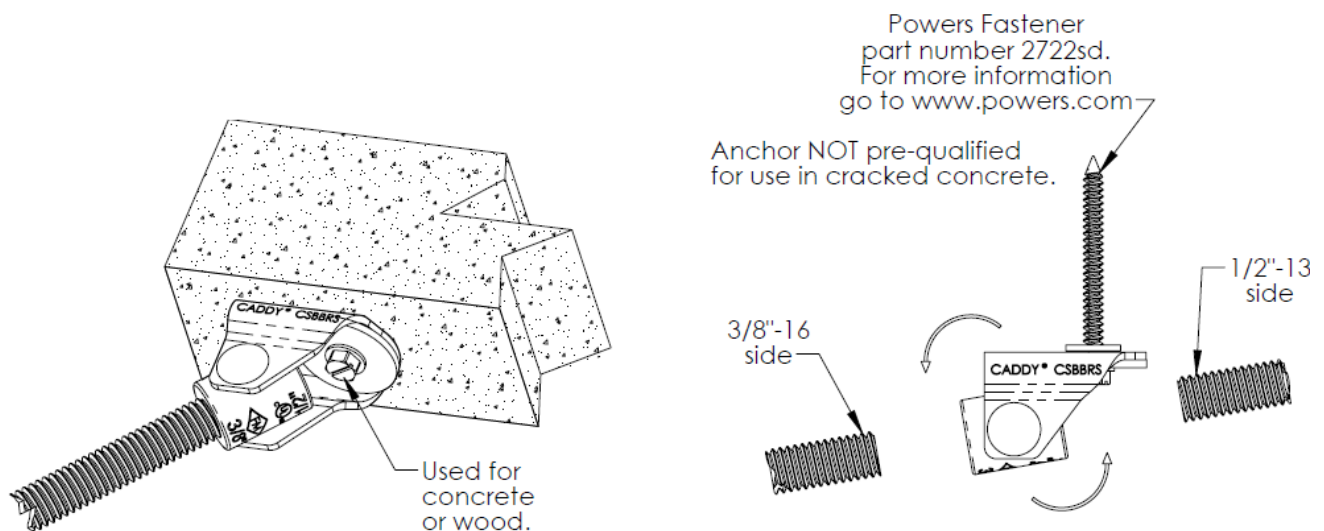
**Note:** The text also includes trademark information and technical support details, which are omitted here for brevity.

**Reference:** NFPA®13, (2007)

**Reference:** NFPA13, (2010)

1. Orient part in direction needed for installation.
2. For concrete, pre-drill using 3/16" taper bit drill at least 1/4" deep. Clear the hole of dust and other material. For installation in wood start at step 3.

Use standard screw gun with a depth sensitive nose piece or clutch for correct seating of fastener. Use a size 5/16" [8mm] hex head socket or flat head screwdriver. Drive the anchor in a continuous motion until fastener is fully seated.



[www.powers.com](http://www.powers.com)

4. Rotate barrel to 3/8"-16 side or 1/2"-13 side, based on threaded rod needed for application.

Branch Line Restraints are intended to be installed in accordance with NFPA®-13 and manufacturer's installation instructions.

## **WARNING**

1. ERICO products shall be installed and used only as indicated in ERICO product instruction sheets and training materials. Instruction sheets are available at [www.erico.com](http://www.erico.com) and from your ERICO customer service representative.
2. ERICO products must never be used for a purpose other than the purpose for which they were designed or in a manner that exceeds specified load ratings.
3. All instructions must be completely followed to ensure proper and safe installation and performance.
4. Improper installation, misuse, misapplication or other failure to completely follow ERICO's instructions and warnings may cause product malfunction, property damage, serious bodily injury and death.
5. Products that are manufactured using spring steel components shall be used only in a non-corrosive indoor environment.
6. All pipe supports, hangers, intermediate components and structural attachments must ONLY be used as described herein and are NEVER to be used for any other purpose.

**NOTE:** All load ratings are for static conditions and do not account for dynamic loading such as wind, water or seismic loads, unless otherwise noted.

The customer is responsible for:

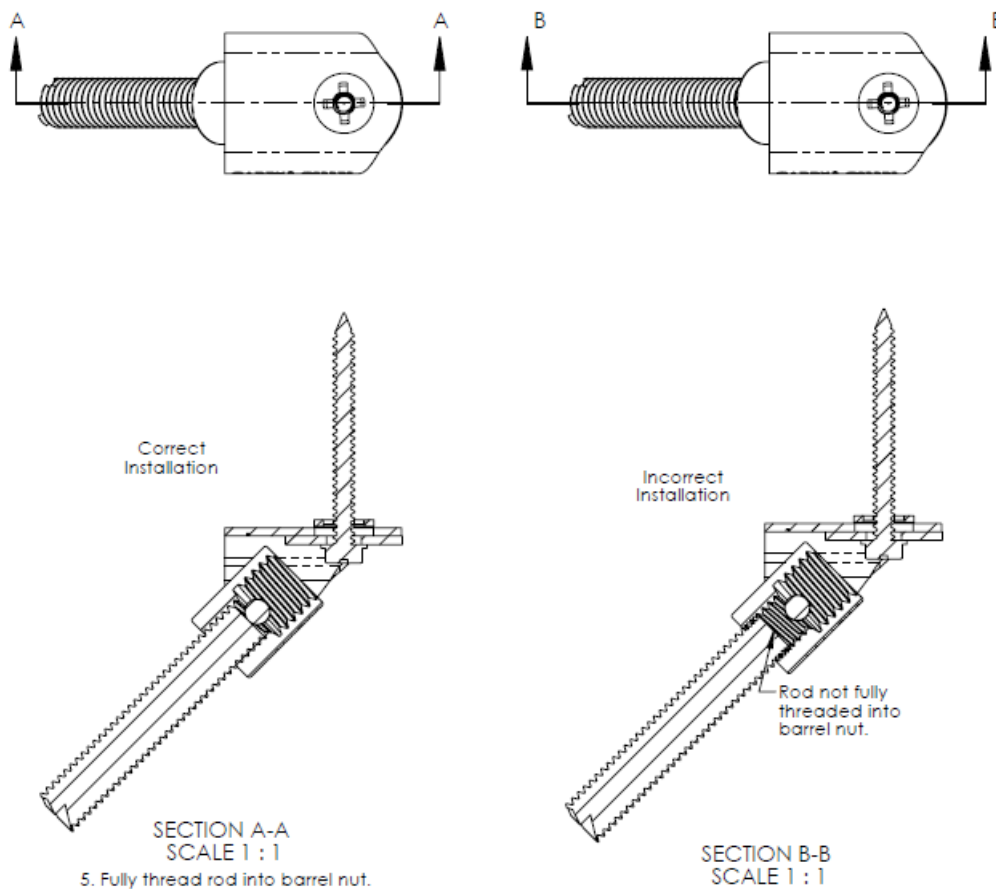
- **a.** Conformance to all governing codes.
- **b.** The integrity of structures to which the products are attached, including their capability of safely accepting the loads imposed, as evaluated by a qualified engineer.
- **c.** Using appropriate industry standard hardware as noted above.

## SAFETY INSTRUCTIONS

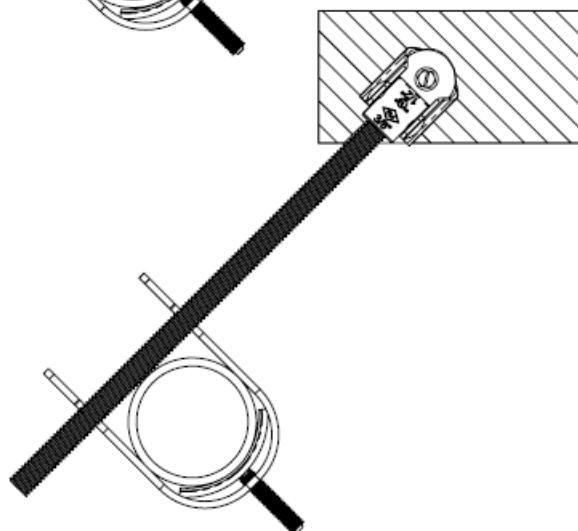
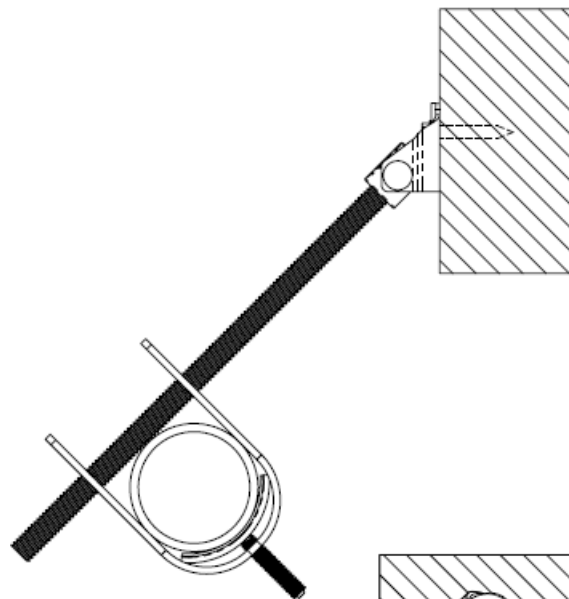
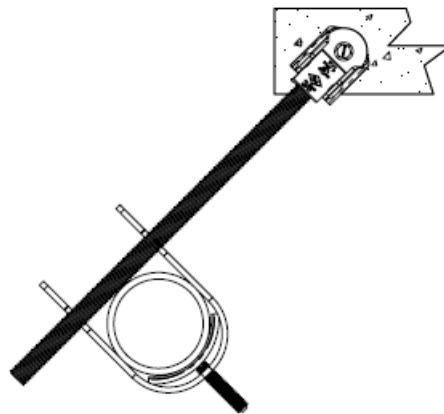
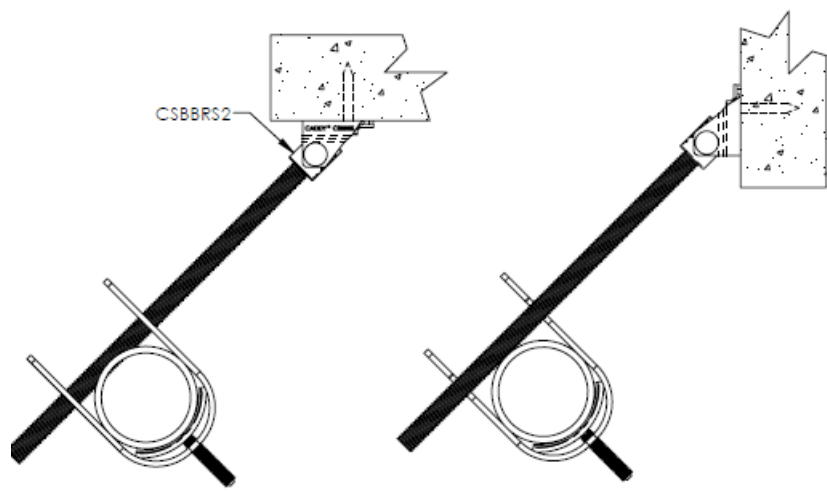
- All governing codes and regulations and those required by the job site must be observed.
- Always use appropriate safety equipment such as eye protection, hard hat, and gloves as appropriate to the application.
- FM is a registered certification mark of FM Approvals LLC, LTD
- NFPA is a registered trademark of National Fire Protection Association, Inc.
- UL is a registered trademark of UL LLC

CADDY, CADWELD, CRITEC, ERICO, ERIFLEX, ERITECH, and LENTON are registered trademarks of ERICO International Corporation.

## installation



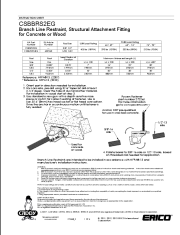
Branch Line Restraint System attached to concrete



This product is intended to be used as a restraint and not a hanger.

For technical support, visit [www.erico.com](http://www.erico.com)

## Documents / Resources

	<p><b><a href="#">ERICO CSBBRS2EG Branch Line Restraint</a></b> [pdf] Instruction Manual CSBBRS2EG Branch Line Restraint, CSBBRS2EG, Branch Line Restraint, Line Restraint, Restraint</p>
---	---

## References

- [nVent CADDY, ERICO, ERIFLEX, LENTON New Website | nVent](#)
- [Anchoring and Fastening Systems from DEWALT - Fasteners Engineered by Powers](#)