

ERICO CSBBRS1EG Branch Line Restraint Instruction Manual

Contents

- [1 ERICO CSBBRS1EG Branch Line Restraint](#)
- [2 Product Information](#)
- [3 Product Usage Instructions](#)
- [4 Important Warnings](#)
- [5 SAFETY INSTRUCTIONS](#)
- [6 installation](#)
- [7 Documents / Resources](#)
 - [7.1 References](#)
- [8 Related Posts](#)



ERICO CSBBRS1EG Branch Line Restraint



Product Information

The CSBBRS1EG is a Branch Line Restraint, Structural Attachment Fitting designed for use with steel 12 gauge (0.1094[2.78mm] to 0.50[12.7mm] thick). It is available in the following part numbers: CSBBRS1EG, CSBBRS1MEG. The EU Article Number is -402239.

The product is compatible with rod sizes 3/8 and 1/2 (M10 and M12) and has a maximum unbraced length (L) of 45-59 inches (310 lbs/1380N) or 75-90 inches (210 lbs/935N). The rod root size, least radius of gyration, and other dimensions are provided in the user manual.

Product Usage Instructions

1. Orient the part in the direction needed for installation.
2. Install the part using a standard screw gun with a depth sensitive nosepiece or clutch for correct seating of the

fastener.

3. Use a size 5/16 [8mm] hex head on a drill & tap screw for installation.
4. Install top/bottom flanges or web as required.
5. Rotate the barrel to 3/8-16 or 1/2-13, based on the threaded rod needed for the application.
6. Fully thread the rod into the barrel nut.

Important Warnings

- ERICO products should only be installed and used as indicated in the ERICO product instruction sheets and training materials.
- ERICO products must not be used for purposes other than their intended design or in a manner that exceeds specified load ratings.
- All instructions must be followed completely to ensure proper and safe installation and performance.
- Improper installation, misuse, misapplication, or failure to follow ERICO's instructions and warnings may result in product malfunction, property damage, serious bodily injury, and death.
- Products with spring steel components should only be used in non-corrosive indoor environments.
- Pipe supports, hangers, intermediate components, and structural attachments must only be used as described in the user manual and should never be used for any other purposes.

Branch Line Restraint, Structural Attachment Fitting for Concrete or Wood

NA Part Number	EU Article Number	Rod Size	UL® Load Rating	FM® Load Rating		
				45 – 59	60 – 74	75 – 90
CSBBRS2EG	—	3/8", 1/2"	425 lbs (1891 N)	290 lbs (1290 N)	200 lbs (890N)	210 lbs (935N)
CSBBRS2MEG	402240	M10, M12				

Rod	Root	Least Radius of Gyration	Maximum Unbraced Length (L)			
Size	Dia.	r	L/r = 100	L/r = 200	L/r = 300	L/r = 400*
3/8"	0.300"	0.075"	7"	14"	22"	30"
M10	7.94mm	1.99mm	198mm	397mm	595mm	794mm
1/2"	0.404"	0.101"	10"	20"	30"	40"
M12	9.60mm	2.40mm	240mm	480mm	720mm	960mm

Reference: NFPA®13, (2007)

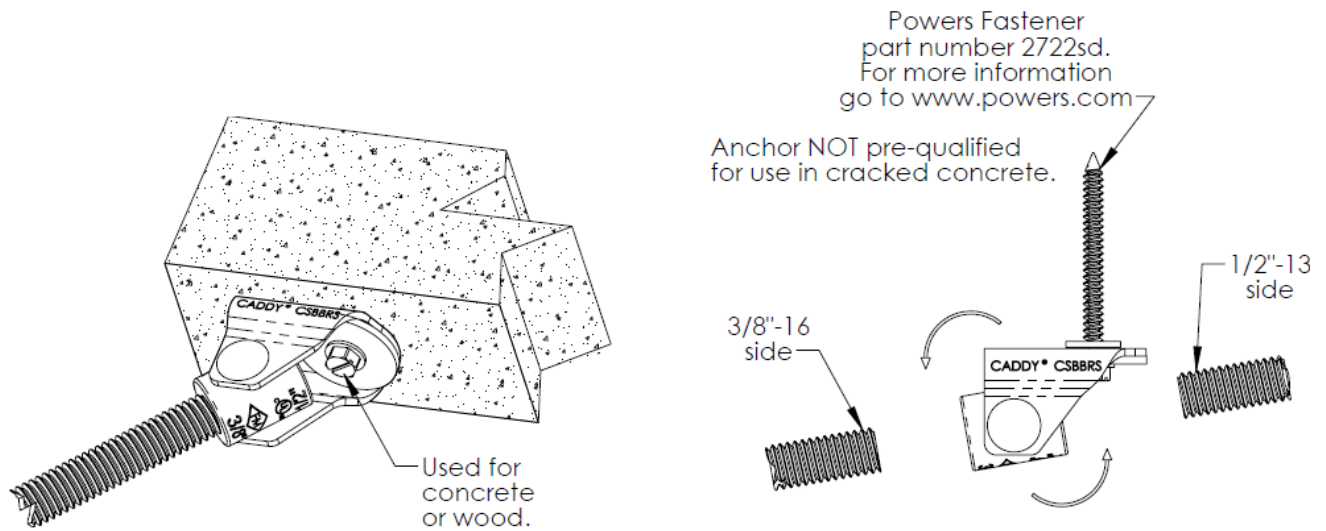
Reference: NFPA13, (2010)

1. Orient part in direction needed for installation.

2. For concrete, pre-drill using 3/16" taper bit drill at least

3. 1/4" deep. Clear the hole of dust and other material. For installation in wood start at step 3.

Use standard screw gun with a depth sensitive nose piece or clutch for correct seating of fastener. Use a size 5/16" [8mm] hex head socket or flat head screwdriver. Drive the anchor in a continuous motion until fastener is fully seated.



www.powers.com

4. Rotate barrel to 3/8"-16 side or 1/2"-13 side, based on threaded rod needed for application.

Branch Line Restraints are intended to be installed in accordance with NFPA®-13 and manufacturer's installation instructions.

WARNING

1. ERICO products shall be installed and used only as indicated in ERICO product instruction sheets and training materials. Instruction sheets are available at www.erico.com and from your ERICO customer service representative.
2. ERICO products must never be used for a purpose other than the purpose for which they were designed or in a manner that exceeds specified load ratings.
3. All instructions must be completely followed to ensure proper and safe installation and performance.
4. Improper installation, misuse, misapplication or other failure to completely follow ERICO's instructions and warnings may cause product malfunction, property damage, serious bodily injury and death.
5. Products that are manufactured using spring steel components shall be used only in a non-corrosive indoor environment.
6. All pipe supports, hangers, intermediate components and structural attachments must ONLY be used as described herein and are NEVER to be used for any other purpose.

NOTE: All load ratings are for static conditions and do not account for dynamic loading such as wind, water or seismic loads, unless otherwise noted.

The customer is responsible for:

- a. Conformance to all governing codes.

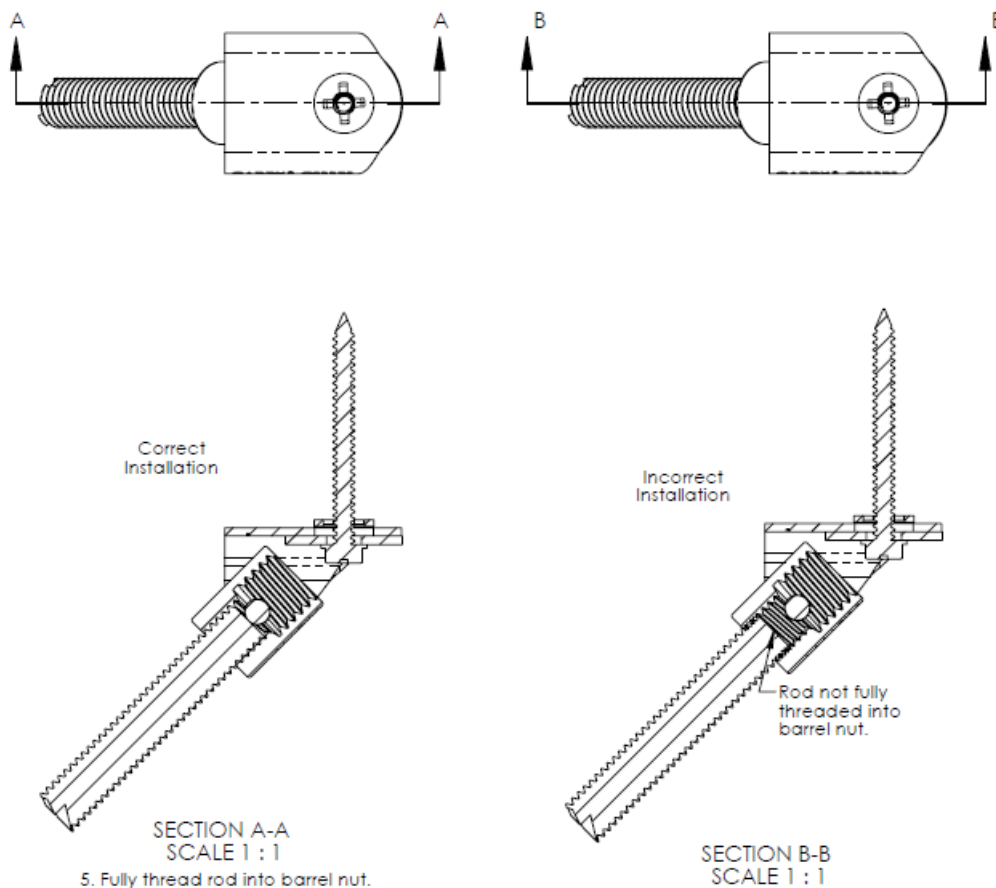
- **b.** The integrity of structures to which the products are attached, including their capability of safely accepting the loads imposed, as evaluated by a qualified engineer.
- **c.** Using appropriate industry standard hardware as noted above.

SAFETY INSTRUCTIONS

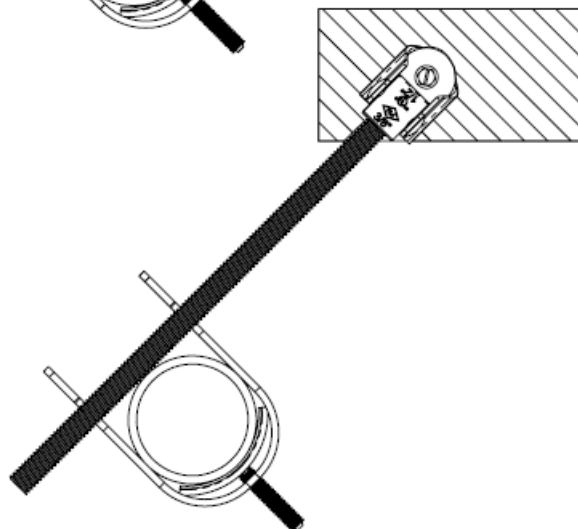
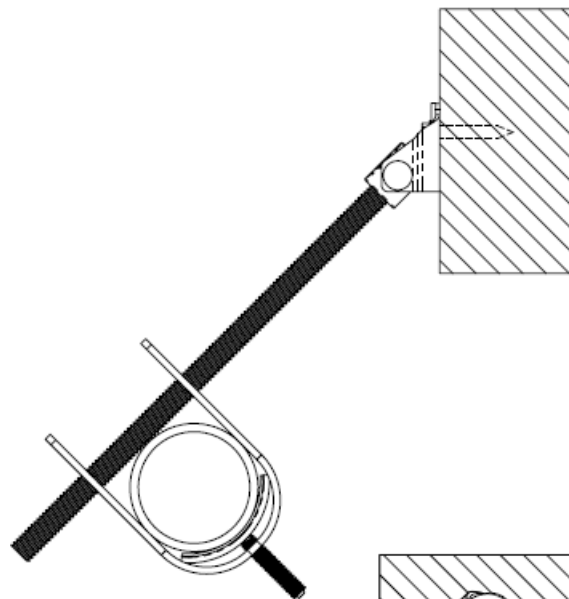
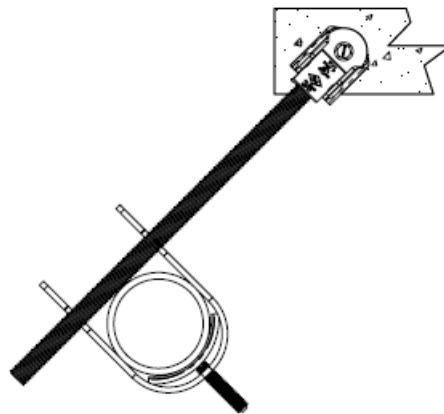
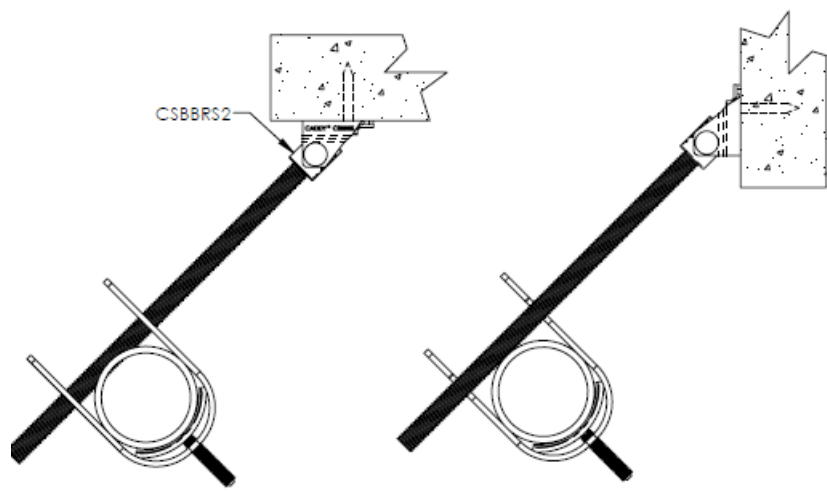
- All governing codes and regulations and those required by the job site must be observed.
- Always use appropriate safety equipment such as eye protection, hard hat, and gloves as appropriate to the application.
- FM is a registered certification mark of FM Approvals LLC, LTD
- NFPA is a registered trademark of National Fire Protection Association, Inc.
- UL is a registered trademark of UL LLC

CADDY, CADWELD, CRITEC, ERICO, ERIFLEX, ERITECH, and LENTON are registered trademarks of ERICO International Corporation.

installation



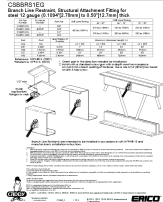
Branch Line Restraint System attached to concrete



This product is intended to be used as a restraint and not a hanger.

For technical support, visit www.erico.com

Documents / Resources

	<p>ERICO CSBBRS1EG Branch Line Restraint [pdf] Instruction Manual CSBBRS1EG Branch Line Restraint, CSBBRS1EG, Branch Line Restraint, Line Restraint, Restraint</p>
---	--

References

-  [Screw Fasteners | DEWALT](#)
-  [nVent CADDY, ERICO, ERIFLEX, LENTON New Website | nVent](#)