



Era GDF 100 Inline Centrifugal Fan Instruction Manual

[Home](#) » [ERA](#) » Era GDF 100 Inline Centrifugal Fan Instruction Manual 

Era GDF 100 Inline Centrifugal Fan Instruction Manual



Contents

- 1 [Passport/Service instruction](#)
- 2 [Inline ccentrifugal fan](#)
- 3 [Safety requirements](#)
- 4 [Main technical characteristics](#)
- MARS
- 5 [Wiring diagram MARS](#)
- 6 [Fan connection to a network](#)
- 7 [Installation:](#)
- 8 [Maintenance](#)
- 9 [Possible problems and solutions](#)
- 10 [Storage and transportation](#)
- 11 [Utilisation](#)
- 12 [Warranty](#)
- 13 [Service lifetime](#)
- 14 [Documents / Resources](#)
 - 14.1 [References](#)
- 15 [Related Posts](#)

Passport/Service instruction

Inline ccentrifugal fan

Assignment

Inline centrifugal fans MARS is intended for application in rooms of residential and public buildings, and also in auxiliary buildings of the industrial enterprises.

Safety requirements

Base on type of protection from electric shock the fans relate to the class I devices per GOST(all-union State Standard) 12.2.007.0-75. The level of fan protection against dangerous parts and water is IP X4. The level of motor protection against dangerous parts and water is IP44.



ATTENTION!

Fan operation outside the specified temperature range (from -25C to +70C) is prohibited. It is prohibited to install fan in the same air vent line together with smoke emission pipe of the fuel burner device.



ATTENTION!

All options, including linking, configuration, maintenance and repair must be performed only when the main voltage is off.

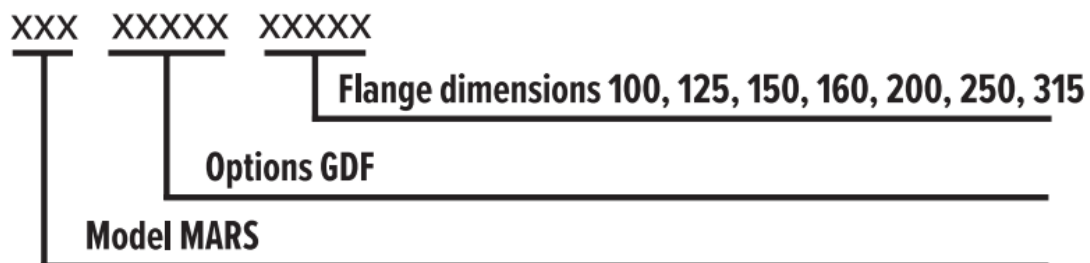
Electricians with special access to the executed work, install fans.

Disconnecting items from a network have to be built in stationary conducting, according to installation rules. The disconnecting device has to disconnect all poles. The ground cable shouldn't be broken off.



ATTENTION!

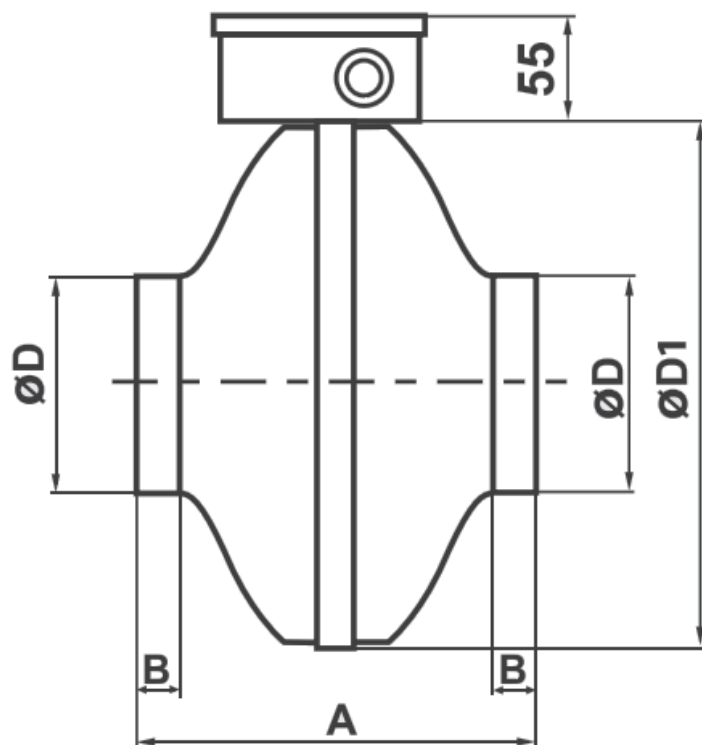
The equipment can not be used by persons (including children) with limited physical, mental or intellectual abilities or if they have no skills or knowledge, unless they are controlled or instructed how to use appliance by a person responsible for their safety. Children must be under supervision to avoid playing with the device.



Main technical characteristics MARS

MARS fans is issued seven standard sizes depending on the install housing diameter.

Fan look, basic dimensions, connecting sizes and technical characteristics described in pic.1 and lists of dimensions and characteristics (table 1).

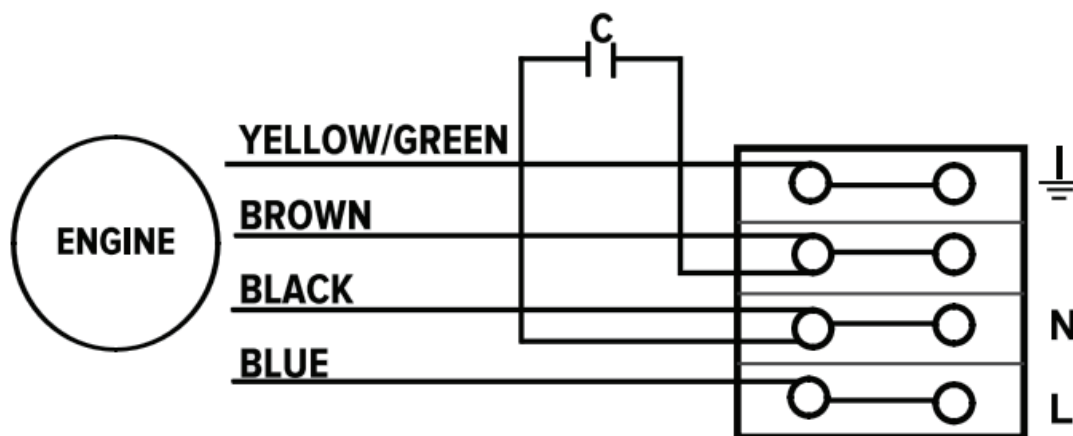


Type	D	Dimensions, mm D1 A		B	Weight, kg
MARS GDF 100	100	243	194	23	2,9
MARS GDF 125	125	243	195	27	2,9
MARS GDF 150	150	333	222	23	4,1
MARS GDF 160	160	333	222	25	4,1
MARS GDF 200	200	333	223	24	5,0
MARS GDF 250	250	333	230	27	5,4
MARS GDF 315	315	402	228	25	6,6

Characteristic	MARS G DF 100	MARS G DF 125	MARS G DF 150	MARS G DF 160	MARS G DF 200	MARS G DF 250	MARS G DF 315
Power consumption, W	62	64	101	102	144	177	278
Productive capacity, m ³ /h	245	340	550	655	935	1020	1500
Pressure, Pa	355	310	374	390	490	587	725
Frequency of rotation, r.p.m.	2587	2505	2605	2578	2654	2544	2502
Noise level dBA, the distance should be not more than 3 m	55	54	60	60	70	60	61
Current type	AC , single phase						
Frequency, Hz	50						
Supply voltage, V	220-240						

“ERA” fans are manufactured according to specs 4681-007-96059883-2016, valid rules and standards. Fans are intended for alternate current network connection of 220-240 V voltage and 50 Hz frequency (allowed to use the fan at a frequency of 60Hz)

Wiring diagram MARS



Fan connection to a network



ATTENTION!

The fan and the service controlling equipment has to be isolated from power supply during the installation time and service. The equipment has to be grounded.

Uncover the distribution block, study wiring diagram (Pic.2) and make necessary connections. Make sure, there is grounding. After the end of connecting works and checking of connections to a distribution box, move a cover and make sure that it is fixed.

Installation:

The length of the well-established pipeline from the fan should be at least 1000 mm. A shorter pipeline should be equipped with a rigid lid/grid that complies with EN ISO 13857: 2008.

Maintenance

- switch off the fan;
- disconnect it from air ducts and air dispensers and remove from the installation site;
- remove dust from blades of the driving wheel, using a soft dry brush or cloth;
- clean blades of the driving wheel, using soapy water;
- wipe all plastic parts with a soft cloth dampened with soapy water;
- wipe all surfaces dry;
- assemble and install the fan in place;
- recommended to do the cleaning 1 time in 6 months.



ATTENTION!

Do not allow the cleaning solution to the motor!

Possible problems and solutions

Malfunction	Probable cause	Remedy
When connected to the power grid, the fan does not rotate, does not respond to controls.	The mains supply is not connected.	It is necessary to consult a specialist.
	Internal connection fault.	
Low air flow.	The ventilation system is clogged.	Clean the ventilation system.
Increased noise or vibration.	The impeller is blocked.	Clean the impeller.
	The fan is not fixed or incorrectly mounted.	Correct the installation error.
	The ventilation system is clogged.	Clean the ventilation system.



ATTENTION!

The fan and the service controlling equipment has to be isolated from power supply during the installation time and service. The equipment has to be grounded.

Storage and transportation

Keep the fan only in manufacturer packaging in a ventilated room with temperature range from -40°C to +80 ° C and relative humidity of 80% (at T = 25 ° C). Shelf life – 5 years from manufacture date. Products are to be transported by any transport, provided that manufacturer packaging is safe from direct exposure to rainfall, impact from other products, displacement during transportation. Transportation is conducted, according to the rules applicable for this transport.

Utilisation



■ This appliance has label in accordance with European Directive 2002/96/EC on waste electrical and

electronic

appliances (waste electrical and electronic equipment – WEEE). This order acts on rules on the territory throughout the EC and recycling of old appliances.

Warranty

Manufacturer guarantees normal fan operation for 2 year from the sale date in retail trade system providing execution of the rules of transportation, storage, installation, operation and other requirements of this instruction. In case the sale date is missing, warranty period will be the date of manufacture.

In case fan work is found faulty, due to manufacturer defects during the warranty period, the consumer has right to replace the fan at the factory, provided the matching of serial numbers on the product and in the passport.

Service lifetime

Established service period – 5 years

Evidence about certificate:

Certificate of compliance No. RU-C-RU.MM06.B.00090. Validity: from 01.09.2016 until 31.08.2021

Series RU No. 0074798

Issued by Authority on production certification Global Standard, LLC

Address: 1 building, 28 house, Volgogradsky avenue, the city of Moscow, 109316

The decryption of serial numbers.

The serial number is located on the label with the characteristics of fan and consists of 10 characters. The serial number is read from left to right, as follows:

No0000000000

Serial number
Month of manufacture
Year of manufacture

Manufacturer:

«ERA» LLC, 390047, Novelise Ulyanovsk street,17,Ryan city, Russia tel. (4912) 24-16-00,e-mail:

sale@era.trade, www.era.trade

Replacement will be made at the following address:

«ERA» LLC, 390047, Tsiolkovsky street,17,Ryan city, Russia tel. (4912) 24-16-00,e-mail: sale@era.trade,

www.era.trade



Documents / Resources



[Era GDF 100 Inline Centrifugal Fan](#) [pdf] Instruction Manual
GDF 100, GDF 125, GDF 150, GDF 160, GDF 200, GDF 250, GDF 315, GDF 100 Inline Centrifugal Fan, GDF 100, Inline Centrifugal Fan, Centrifugal Fan, Fan

References

- [User Manual](#)

[Manuals+](#), [Privacy Policy](#)

This website is an independent publication and is neither affiliated with nor endorsed by any of the trademark owners. The "Bluetooth®" word mark and logos are registered trademarks owned by Bluetooth SIG, Inc. The "Wi-Fi®" word mark and logos are registered trademarks owned by the Wi-Fi Alliance. Any use of these marks on this website does not imply any affiliation with or endorsement.