



eQuation IFH04-33E Workshop Heater Instruction Manual

[Home](#) » [equation](#) » eQuation IFH04-33E Workshop Heater Instruction Manual 

Contents

- [1 eQuation IFH04-33E Workshop Heater](#)
- [2 SAFETY INSTRUCTIONS FOR ALL PORTABLE HEATERS](#)
- [3 INSTALLATION](#)
- [4 HOW TO USE](#)
- [5 CLEANING & MAINTENANCE](#)
- [6 CLEANING & MAINTENANCE](#)
- [7 ENVIRONMENT](#)
- [8 Documents / Resources](#)
- [9 Related Posts](#)

quations

eQuation IFH04-33E Workshop Heater



SAFETY INSTRUCTIONS FOR ALL PORTABLE HEATERS

Always read this instruction manual before installing or using your appliance and always keep for future reference.

- This appliance can be used by children aged from 8 years and above and persons with reduced physical, sensory or mental capabilities or lack of experience and knowledge if they have been given supervision or instruction concerning use of the appliance in a safe way and understand the hazards involved. Children shall not play with the appliance. Cleaning and user maintenance shall not be made by children without supervision. Children of less than 3 years should be kept away unless continuously supervised.
- Children aged from 3 years and less than 8 years shall only switch on/off the appliance provided that it has been placed or installed in its intended normal operating position and they have been given supervision or instruction concerning use of the appliance in a safe way and understand the hazards involved. Children aged from 3 years and less than 8 years shall not plug in, regulate and clean the appliance or perform user maintenance.

CAUTION — Some parts of this product can become very hot and cause burns. Particular attention has to be given where children and vulnerable people are present.

- If the supply cord is damaged, it must be replaced by the manufacturer, its service agent or similarly qualified persons in order to avoid a hazard.
- **CAUTION:** In order to avoid a hazard due to inadvertent resetting of the thermal cutout, this appliance must not be supplied through an external switching device, such as a timer, or connected to a circuit that is regularly switched on and off by the utility.
- **WARNING:** In order to avoid overheating, do not cover the heater.
- The heater must not be located immediately below a socket-outlet.
- Do not use this heater in the immediate surroundings of a bath, a shower or a swimming pool.
- **CAUTION:** This mobile heater is intended to be used mainly in workshops, craftsmen or garages. Do not use in bathrooms.
- It is important to connect the product to a properly sized socket because the product has a high power.

INSTALLATION

WARNING: This portable heater is intended mainly to be used in workshops, light industries or garages. Do not use it in bathrooms.

WARNING: Your heater shall be used as portable appliance only (thanks to respect all the safety warnings given below).

Move the heater only by its handles. Never move the heater when it's working. Never let the heater under the rain or under wet conditions.

Put the heater only on plane, clean & empty surface.

WARNING: Let a minimum distance of 1m between any side of your appliance and any obstacle (furniture or walls, for example)

HOW TO USE

Plug the appliance to a 220-240V ~ 50-60Hz socket. If you are not sure, we advice you to contact a professional electrician for more details.

There is a 4 positions switch on your appliance: 0 (Stop) – Fan only – Fan & heating low temperature – Fan & heating high temperature.

Turn the thermostat clockwise to increase the temperature.

CLEANING & MAINTENANCE

Switch off and unplug from the power supply before cleaning.

Using a soft, moist cloth, with or without a mild soap solution, carefully clean the exterior surface of the product

CLEANING & MAINTENANCE

CAUTION: Allow the product to completely cool before handling or cleaning it.

Do not allow water or other liquids to run into the interior of the product, as this could create a fire and/or electrical hazard.

We also recommend the periodic cleaning of this appliance by lightly running a vacuum cleaner nozzle over the guards to remove any dust or dirt that may have accumulated inside or on the unit.

CAUTION: Do not use harsh detergents, chemical cleaners or solvents as they may damage the surface finish of the plastic components.

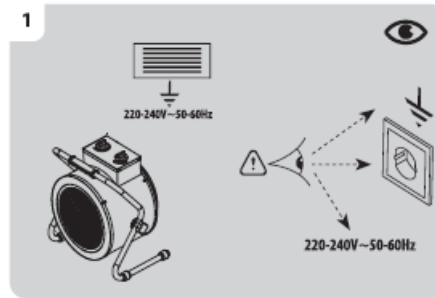
ENVIRONMENT

Meaning of crossed-out wheeled dustbin : Do not dispose of electrical appliances as unsorted municipal waste, use separate collection facilities. Contact your local government for information regarding the collection systems available. If electrical appliances are disposed of in landfills or dumps, hazardous substances can leak into the groundwater and get in the food chain, damaging your health and well-being

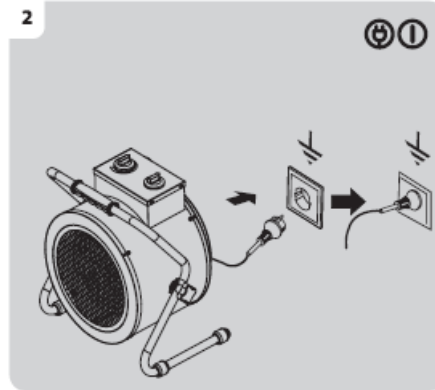
When replacing old appliances with new ones, the retailer is legally obligated to take back your old appliance for disposals at least free of charge.

USE

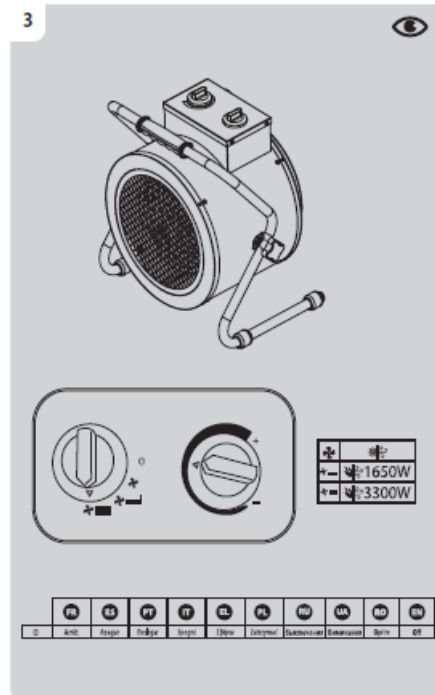
1

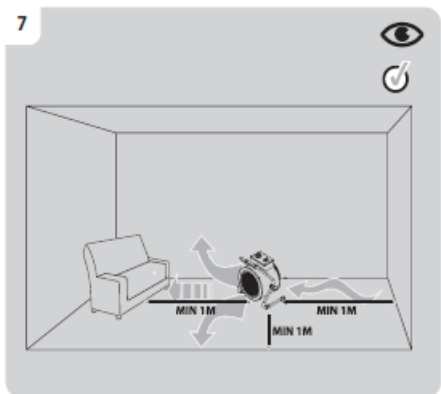
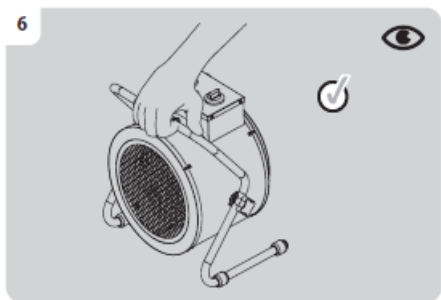
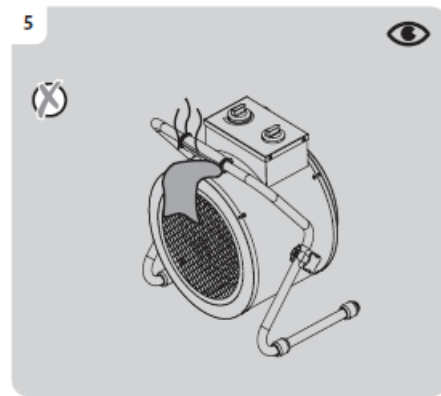
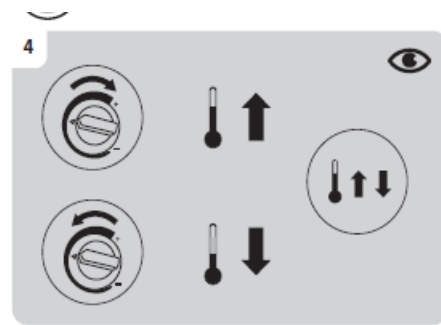


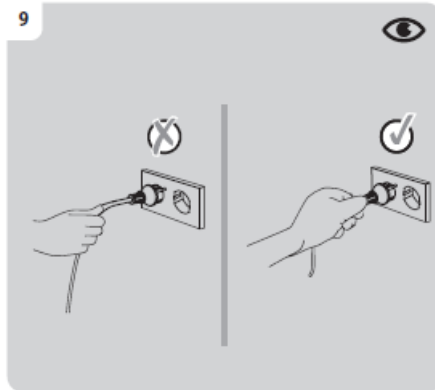
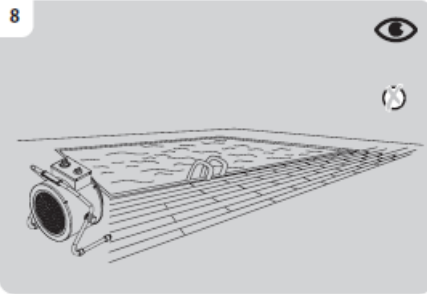
2



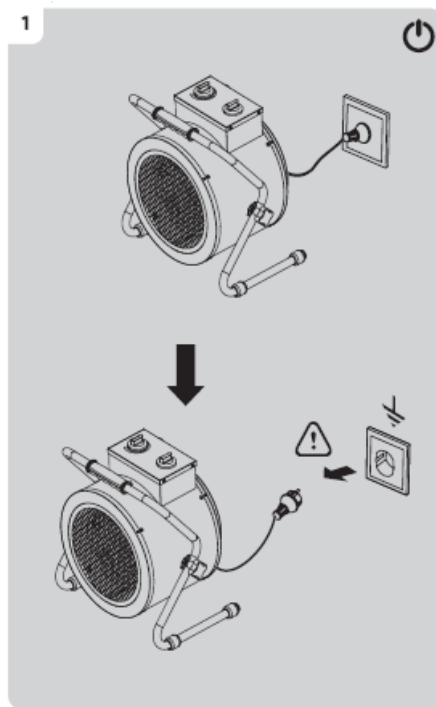
3

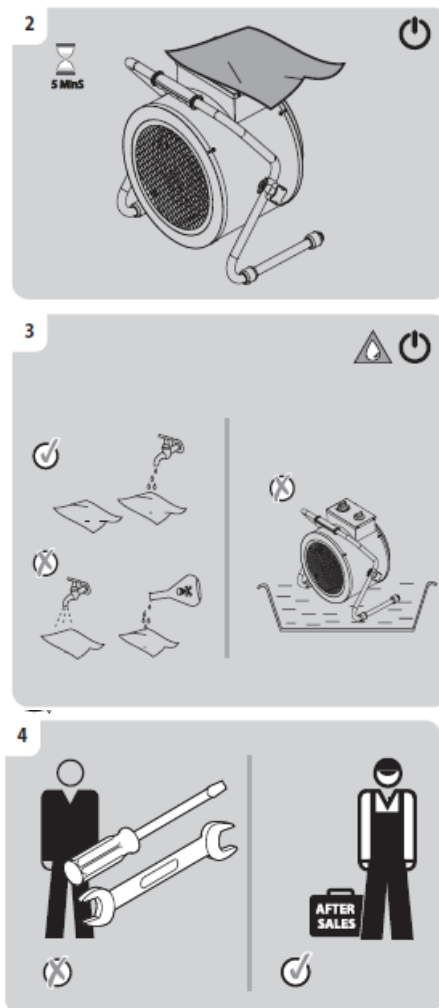






MAINTANCE





Documents / Resources



[eQuation IFH04-33E Workshop Heater](#) [pdf] Instruction Manual
IFH04-33E Workshop Heater, IFH04-33E, Workshop Heater, Heater