

EPSON WF-C5890 Series Start Here



EPSON WF-C5890 Series Start Here Instruction Manual

[Home](#) » [Epson](#) » EPSON WF-C5890 Series Start Here Instruction Manual 

Contents

- [1 EPSON WF-C5890 Series Start Here](#)
- [2 Product Information](#)
- [3 Product Usage Instructions](#)
- [4 Package Content](#)
- [5 Setting Up the Printer](#)
- [6 Troubleshooting](#)
- [7 Radio Equipment Information](#)
- [8 Documents / Resources](#)
 - [8.1 References](#)

EPSON®

EPSON WF-C5890 Series Start Here



Product Information

Specifications

- **Brand:** Epson
- **Model:** [Model Name]
- **Color:** [Color Options]
- **Connectivity:** USB
- **Compatibility:** Windows

Product Usage Instructions

Setting Up the Printer

1. Do not dispose of any components. Attach them when transporting the printer.
2. Open the printer following the instructions provided in the manual.
3. Press the BK ink tray and pull it out as directed.
4. Unpack the printer carefully.
5. Fit the ink supply unit into the ink tray.
6. Shake the ink supply unit well before use.

Ink Supply Units

For the initial setup, ensure you use the ink supply units that came with the printer. These units are designed to charge the print head and may print fewer pages than subsequent units.

Inserting Ink Supply Units

Insert all ink supply units in the order Y, M, and C as indicated.

Paper Loading

1. Load paper into the paper cassette with the printable side facing down.
2. Avoid loading paper above the indicated arrow mark inside the edge guide.

Paper Settings

Set the paper size and type for the paper cassette. These settings can be adjusted later if needed.

Fax Settings

If fax functionality is required, make the necessary settings following the on-screen instructions. These settings can be modified at a later time.

Sharing Phone Line

If sharing a phone line with a telephone, remove the cap and connect the telephone to the EXT. port as instructed.

Frequently Asked Questions (FAQ)

- **Q: Can I reuse the initial ink supply units?**

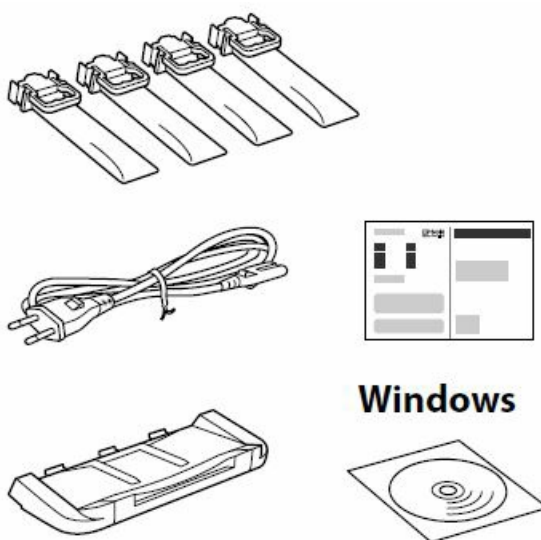
A: The initial ink supply units are meant for the printer's setup and cannot be saved for later use. They are partially used to charge the print head and may print fewer pages than subsequent units.

- **Q: Can I change paper settings after the initial setup?**

A: Yes, you can change paper settings such as size and type for the paper cassette at any time if needed.

Package Content

Contents may vary by location.



Do not connect a USB cable unless instructed to do so.



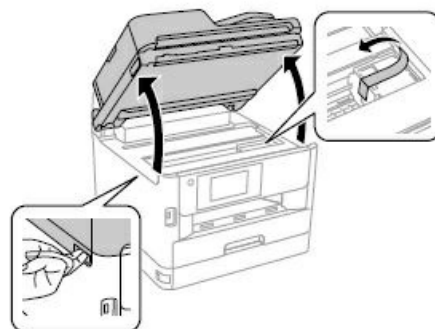
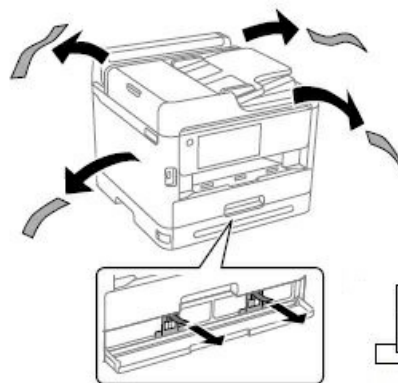
Setting Up the Printer

See this guide or Epson video guides for printer setup instructions. For information on using the printer, see the User's Guide on our Web site. Select Support to access the manuals.

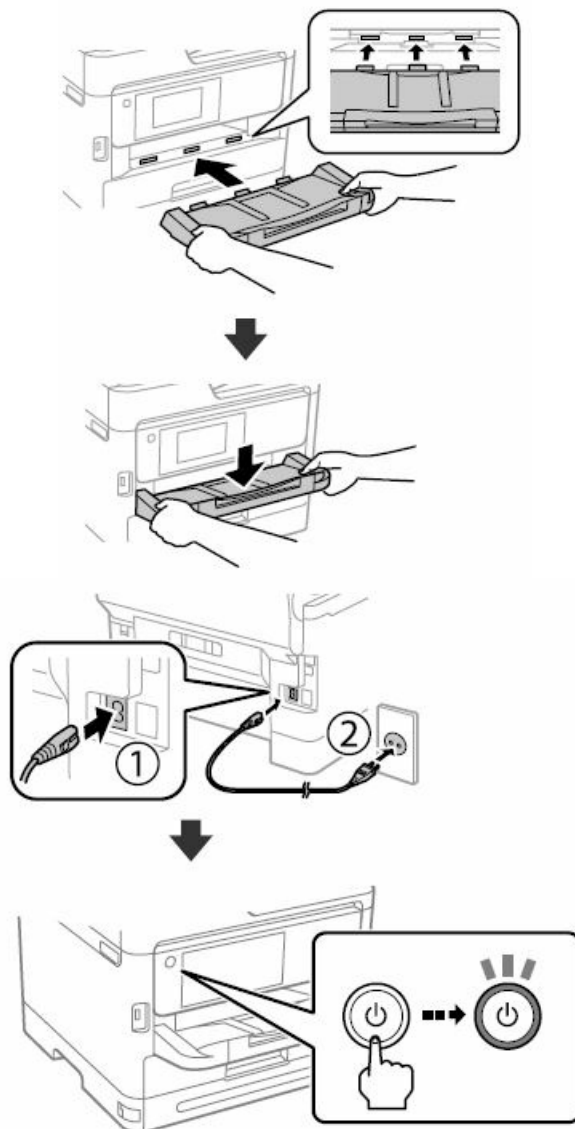


<https://epson.sn>

1. Remove all protective materials.



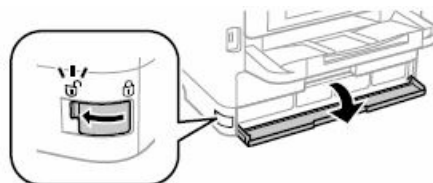
2. Insert the output tray.



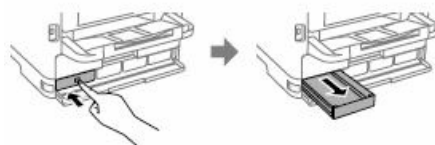
3. Select a language, country and time.

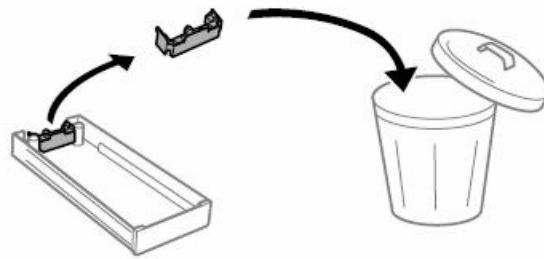


4. Open.

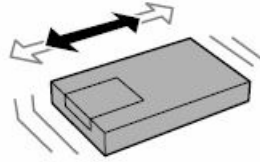


5. Press the BK ink tray, and then pull it out.



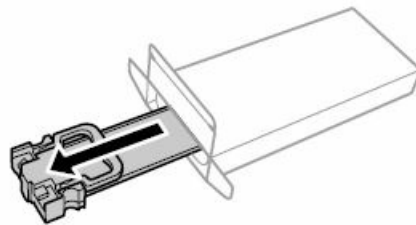


6. Shake the ink supply unit 10 times well.

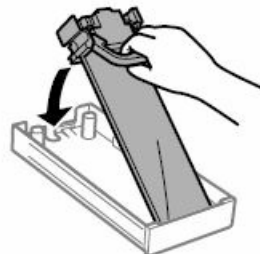


For the initial setup, make sure you use the ink supply units that came with this printer. These ink supply units cannot be saved for later use. The initial ink supply units will be partly used to charge the print head. These ink supply units may print fewer pages compared to subsequent ink supply units.

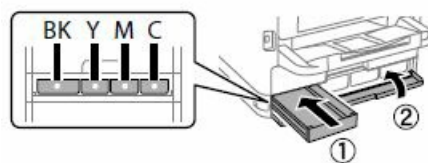
7. Unpack.



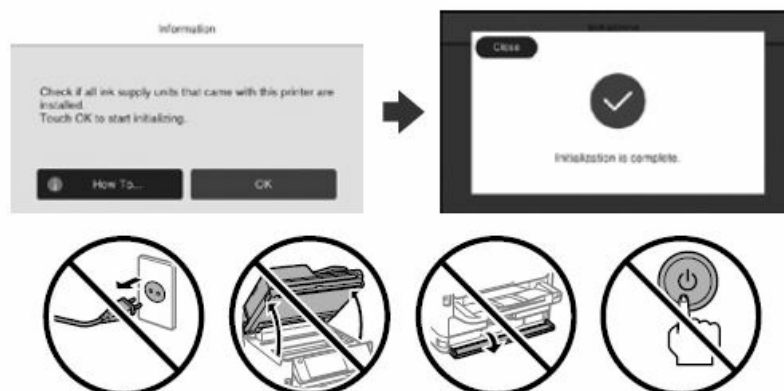
8. Fit the ink supply unit into the ink tray.



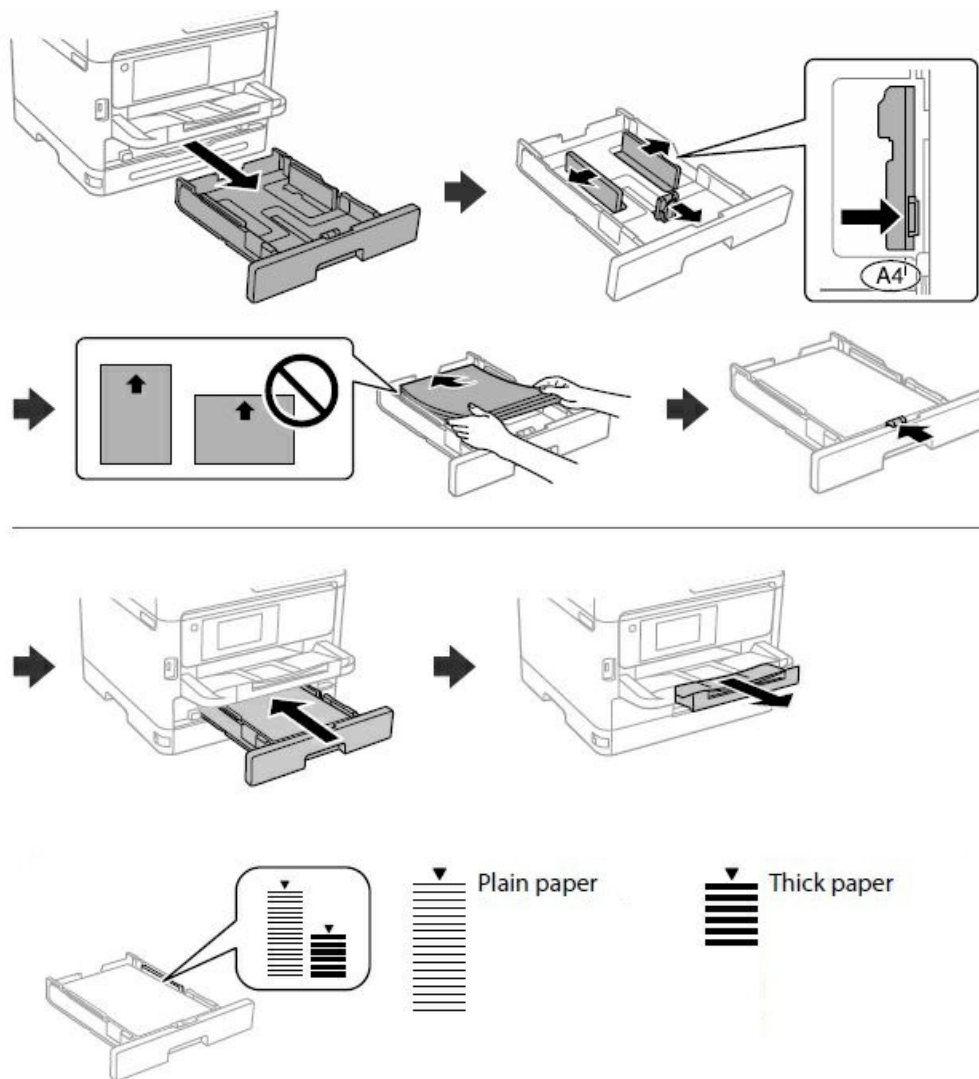
9. Insert and close. Insert all of the ink supply units in the order Y, M, and C.



10. Wait until the charging is finished.

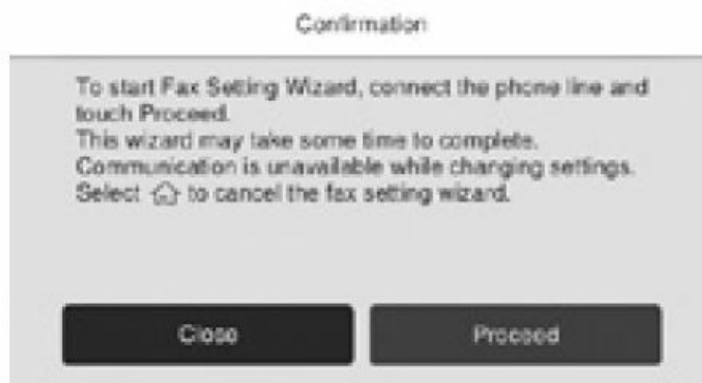


11. Load paper in the paper cassette with the printable side facing down.

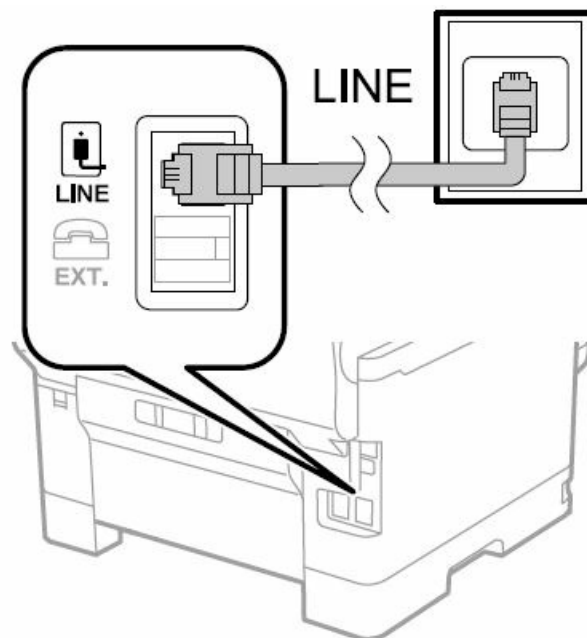


Do not load paper above the ▼ arrow mark inside the edge guide.

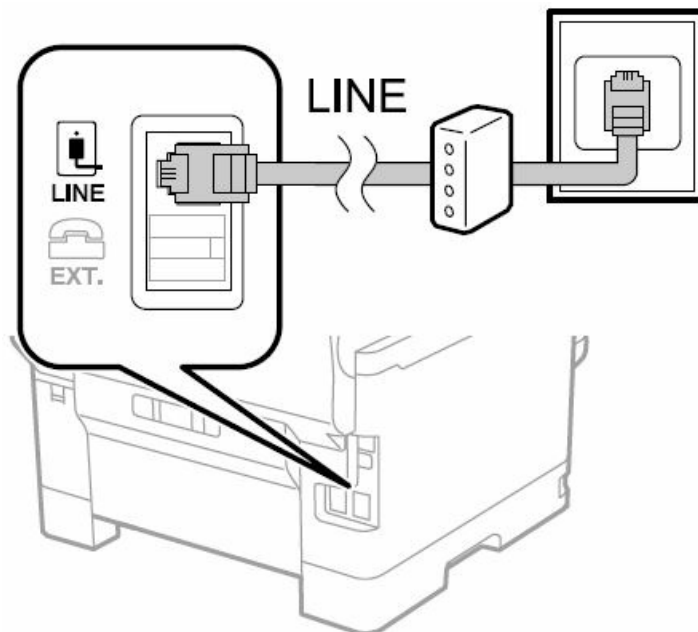
12. Set the paper size and paper type for the paper cassette. You can change these settings later.
13. When the paper setting is complete, the print quality adjustment screen is displayed. Follow the on-screen instructions to perform adjustments.
14. Make the fax settings. You can change these settings later. If you do not want to make settings now, close the fax settings screen.



15. Connect a phone cable.
 - Connecting to PSTN or PBX



- Connecting to DSL or ISDN

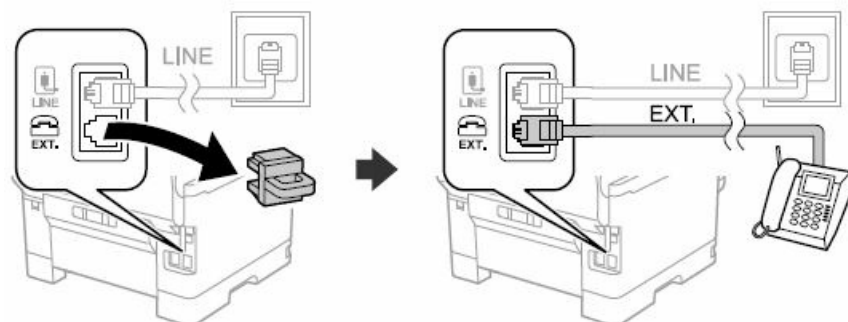


- **Available phone cable**

RJ-11 Phone Line/RJ-11 Telephone set connection.

- Depending on the area, a phone cable may be included with the printer, if so, use the cable.

16. If you want to share the same phone line as your telephone, remove the cap and then connect the telephone to the EXT. port.



17. Connect your computer or smart device with the printer. Visit the website to install software and configure the network. Windows users can also install software and configure the network using the CD supplied.

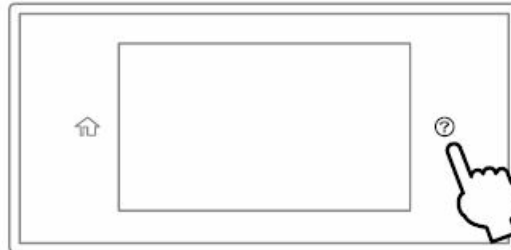


<https://epson.sn>



Troubleshooting

For troubleshooting, press ? for assistance. This feature provides step-by-step and animation instructions for most issues such as adjusting print quality and loading paper.



Radio Equipment Information

For users in Europe and UK

- Frequency Range
 - 2,400–2,483.5 MHz
 - 5,150–5,250 MHz
 - 5,250–5,350 MHz
 - 5,470–5,725 MHz
- Maximum Radio-Frequency Power Transmitted
 - 20.0 dBm (EIRP)

General Notice:

Other product names used herein are for identification purposes only and may be trademarks of their respective owners. Epson disclaims any rights in those marks.

- **Üretici:** SEIKO EPSON CORPORATION
- **Adres:** 3-5, Owa 3-chome, Suwa-shi, Nagano-ken 392-8502 Japan
- **Tel:** 81-266-52-3131
- **Web:** <http://www.epson.com/>.

The contents of this manual and the specifications of this product are subject to change without notice.

© 2023 Seiko Epson Corporation.



[EPSON WF-C5890 Series Start Here](#) [pdf] Instruction Manual
WF-C5890 Series Start Here, WF-C5890 Series, Start Here, Here

References

- [User Manual](#)

[Manuals+](#), [Privacy Policy](#)

This website is an independent publication and is neither affiliated with nor endorsed by any of the trademark owners. The "Bluetooth®" word mark and logos are registered trademarks owned by Bluetooth SIG, Inc. The "Wi-Fi®" word mark and logos are registered trademarks owned by the Wi-Fi Alliance. Any use of these marks on this website does not imply any affiliation with or endorsement.