



EPSON WF-C5390 Series WorkForce Color Printer User Manual

[Home](#) » [Epson](#) » EPSON WF-C5390 Series WorkForce Color Printer User Manual 

Contents

- [1 EPSON WF-C5390 Series WorkForce Color Printer](#)
- [2 Product Information](#)
- [3 Product Usage Instructions](#)
- [4 Setting Up the Printer](#)
- [5 Troubleshooting](#)
- [6 Radio Equipment Information](#)
- [7 Documents / Resources](#)
- [8 Related Posts](#)

EPSON

EPSON WF-C5390 Series WorkForce Color Printer



Product Information

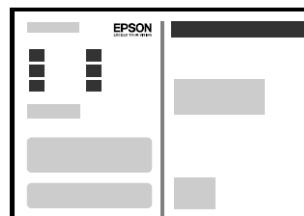
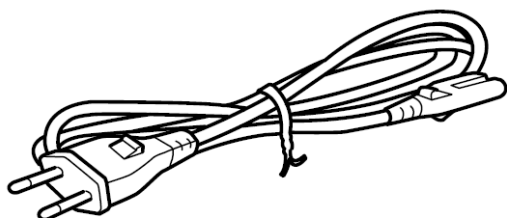
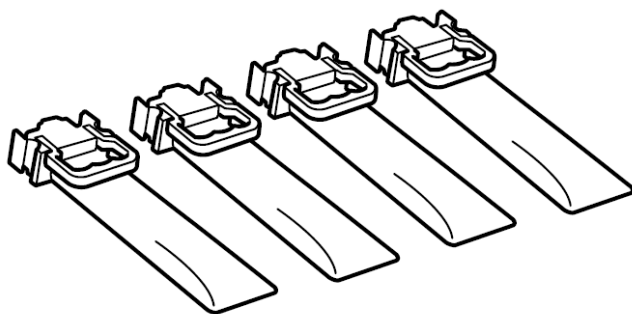
The product is a printer that can be set up on a Windows computer. The contents of the printer may vary by location. USB cable should only be connected if instructed in the instructions.

The printer comes with ink supply units that cannot be saved for later use. The initial ink supply units are partly used to charge the print head and may print fewer pages compared to subsequent ink supply units.

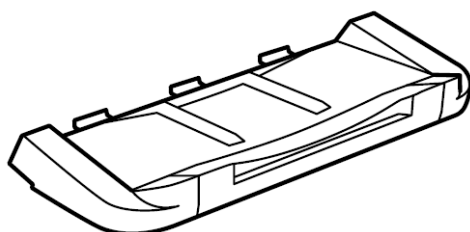
Product Usage Instructions

1. Remove all protective materials from the printer.
2. Open the printer.
3. Press the BK ink tray and pull it out.
4. Shake the ink supply unit 10 times well.
5. Fit the ink supply unit into the ink tray.
6. Insert all of the ink supply units in the order Y, M, C, and close the tray.
7. Load plain paper into the paper cassette with the printable side facing downwards. Do not load paper above the d arrow mark inside the edge guide.
8. Set the paper size and paper type for the paper cassette. These settings can be changed later.
9. Refer to the user manual or Epson video guides for printer setup instructions. For information on using the printer, see the User's Guide on Epson's website. Select Support to access the manuals.

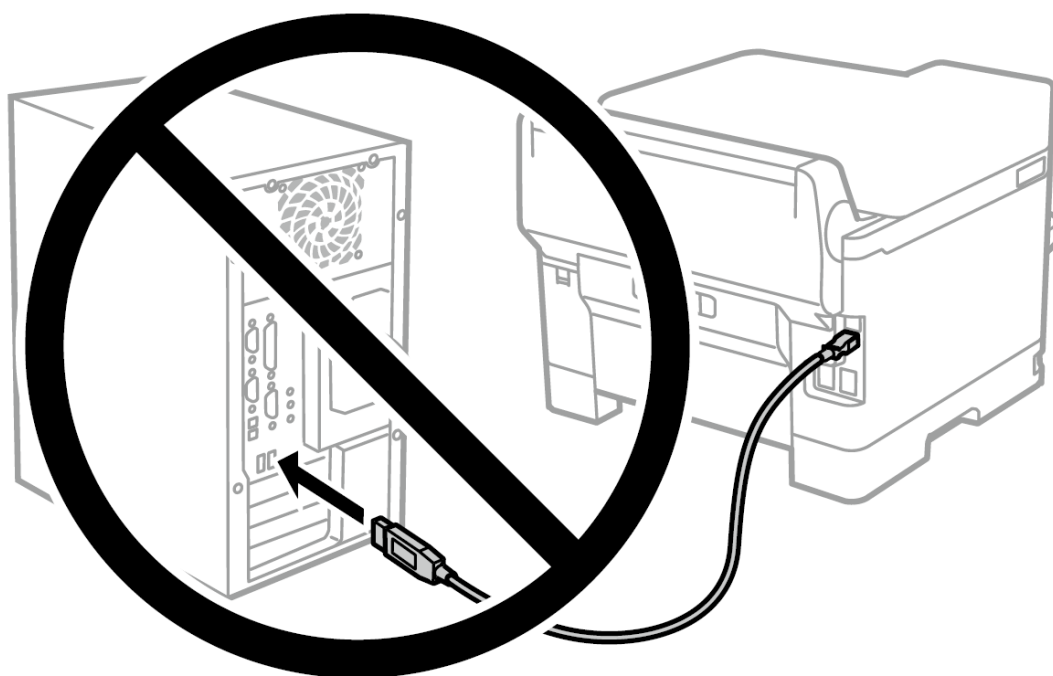
Contents may vary by location.



Windows



Do not connect a USB cable unless instructed to do so.



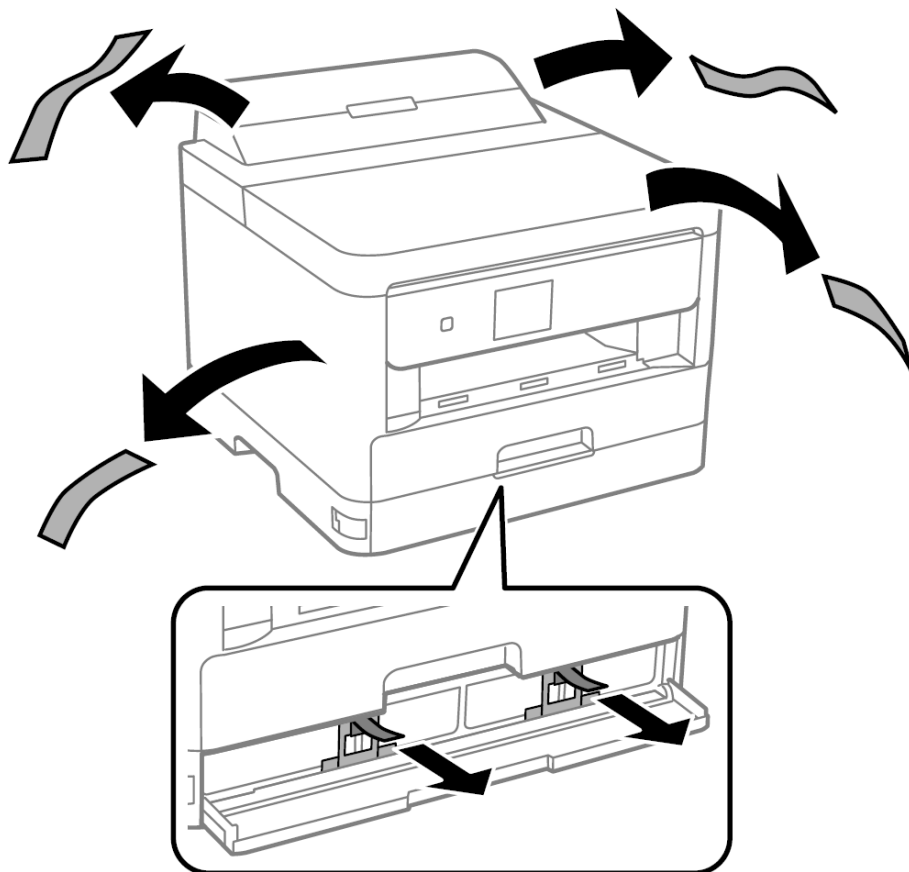
Setting Up the Printer

See this guide or Epson video guides for printer setup instructions. For information on using the printer, see the User's Guide on our Web site. Select **Support** to access the manuals.

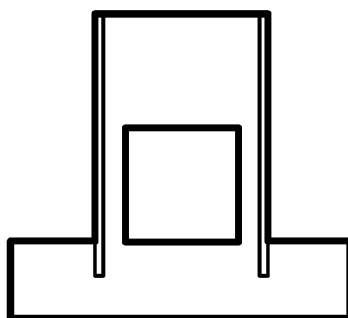


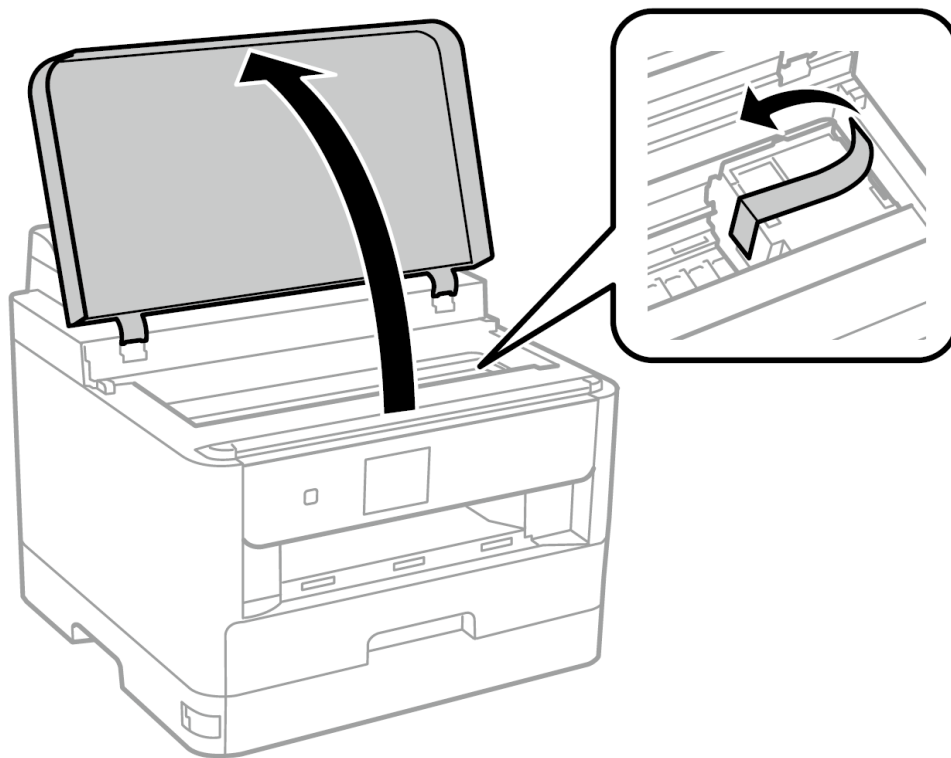
<https://epson.sn>

1. Remove all protective materials.

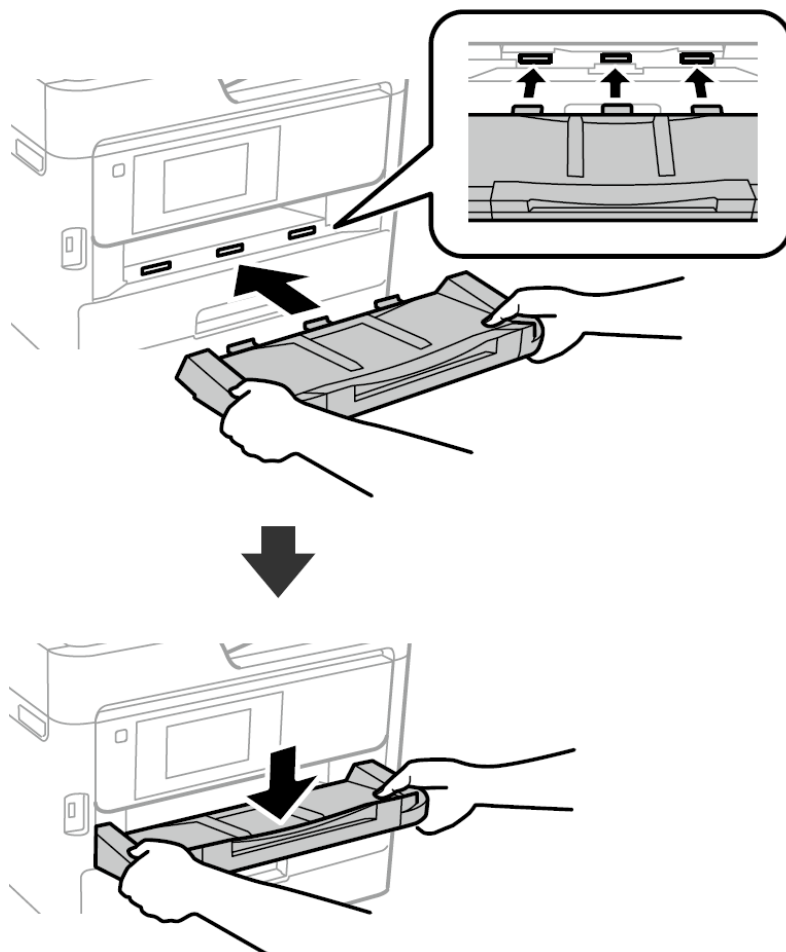


Do not dispose. Attach them when transporting.

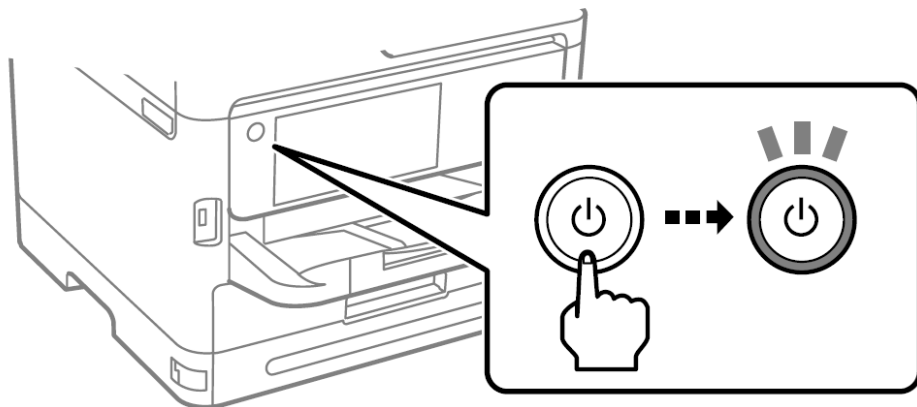
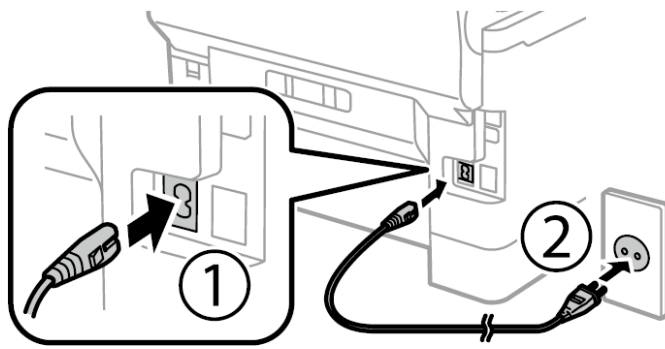




2. Insert the output tray.



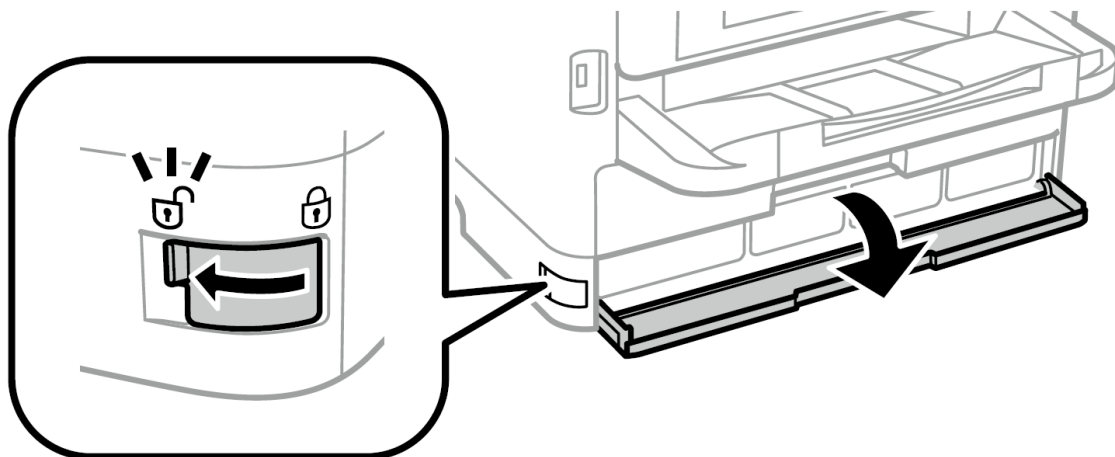
3.



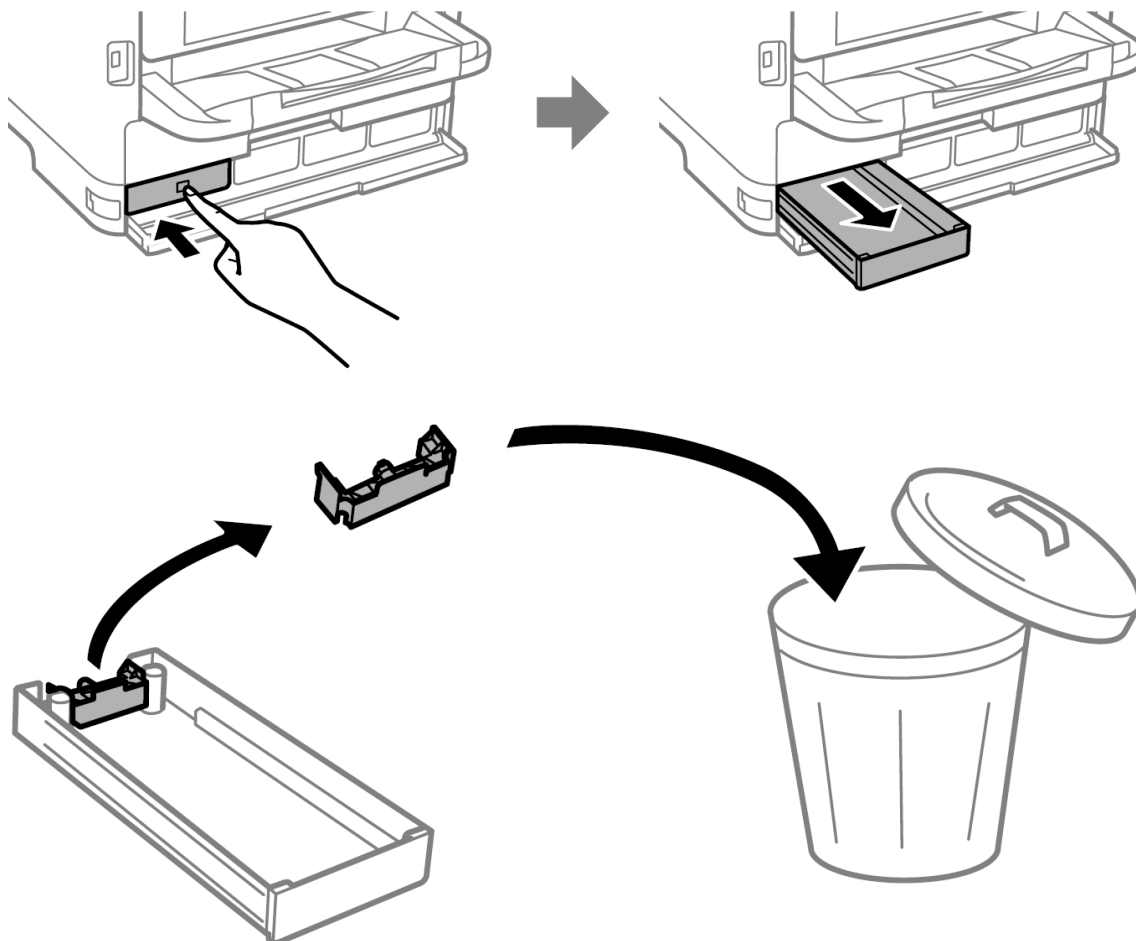
4. Select a language and time.



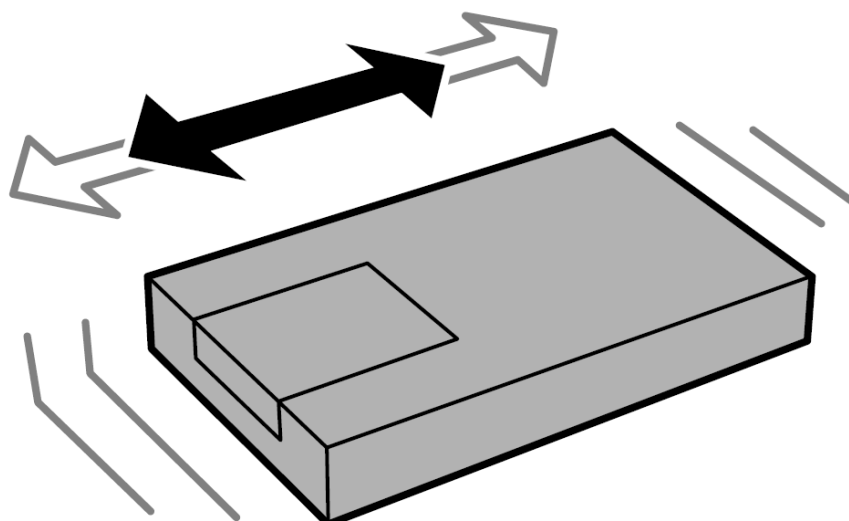
5. Open.



6. Press the BK ink tray, and then pull it out.

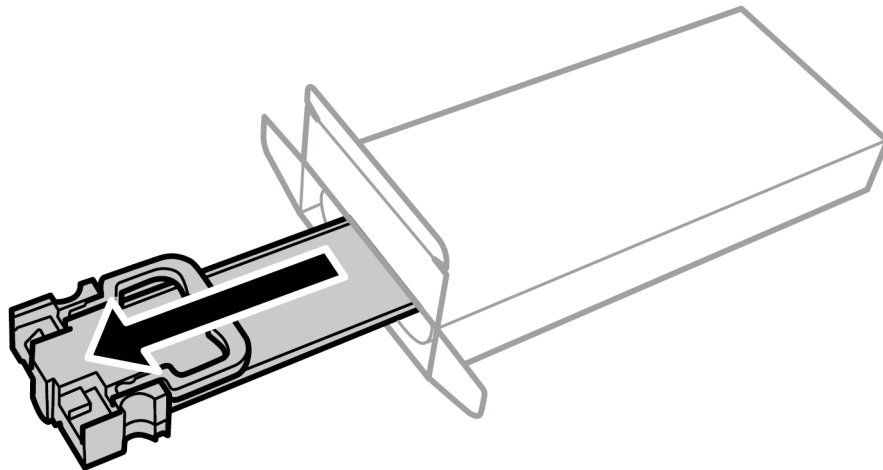


7. Shake the ink supply unit 10 times well.

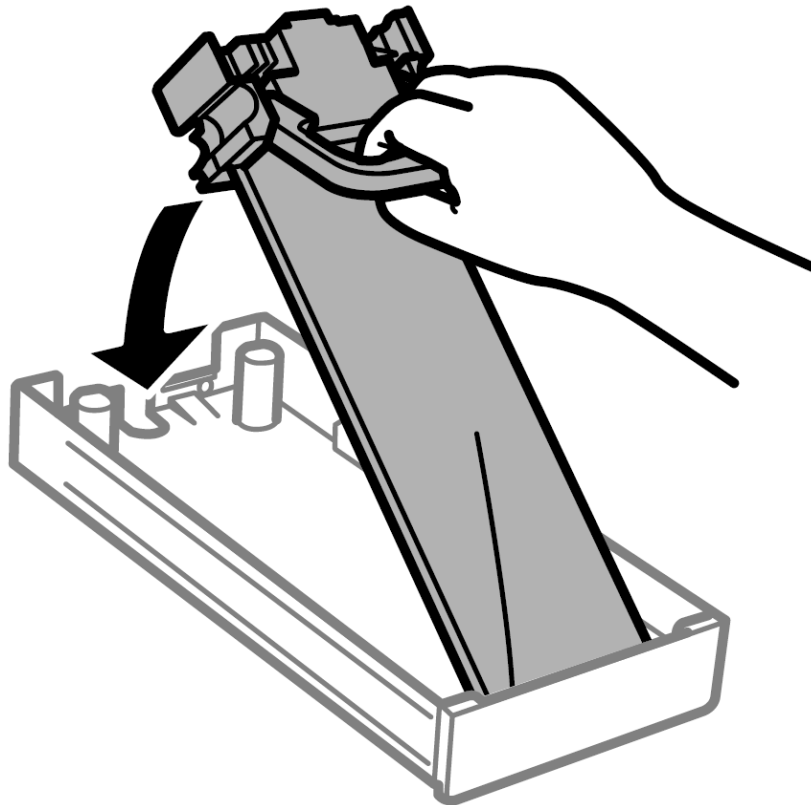


For the initial setup, make sure you use the ink supply units that came with this printer. These ink supply units cannot be saved for later use. The initial ink supply units will be partly used to charge the print head. These ink supply units may print fewer pages compared to subsequent ink supply units.

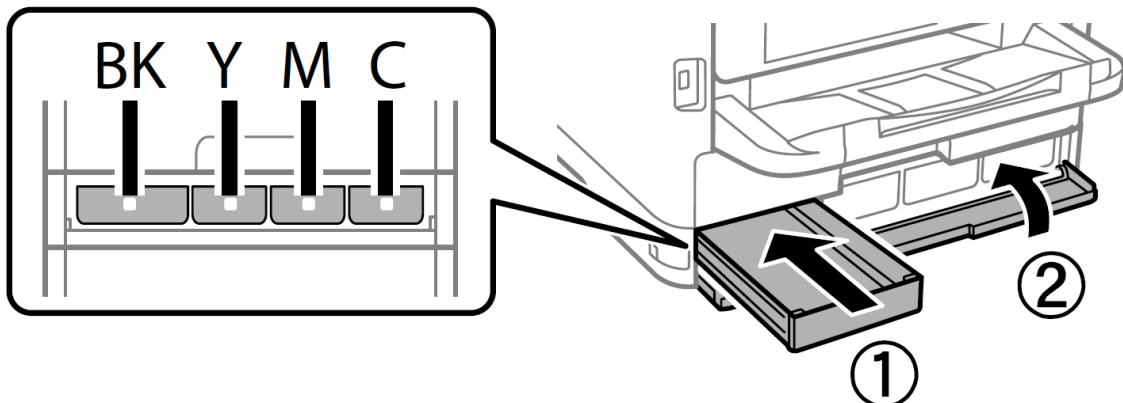
8. Unpack.



9. Fit the ink supply unit into the ink tray.



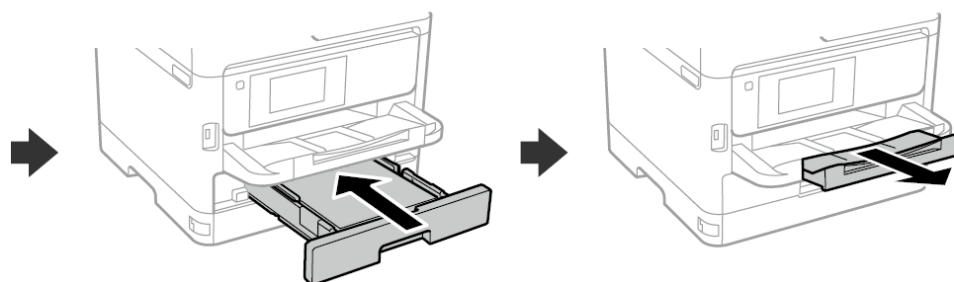
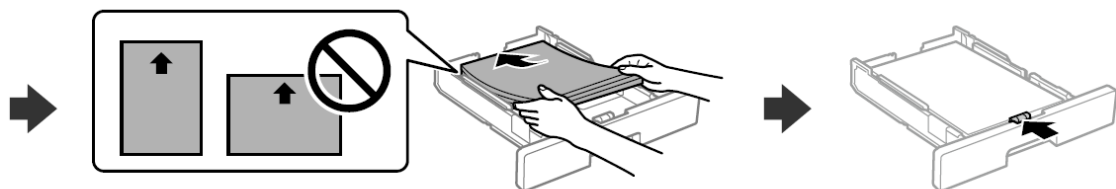
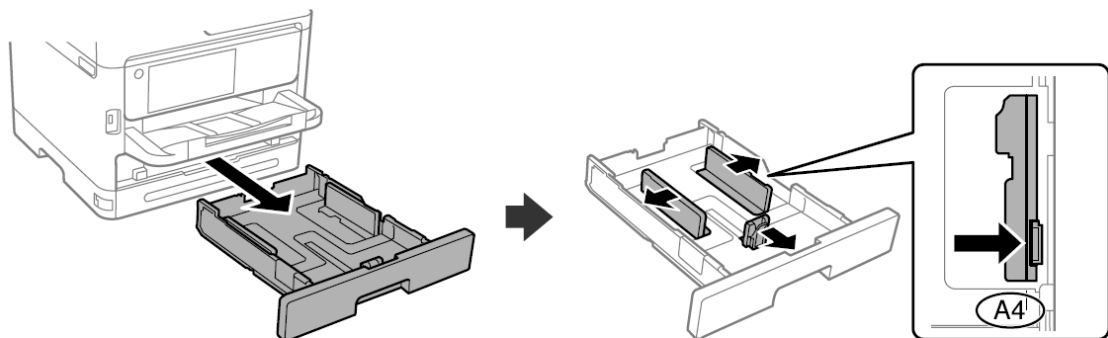
10. Insert and close. Insert all of the ink supply units in the order Y, M, C.



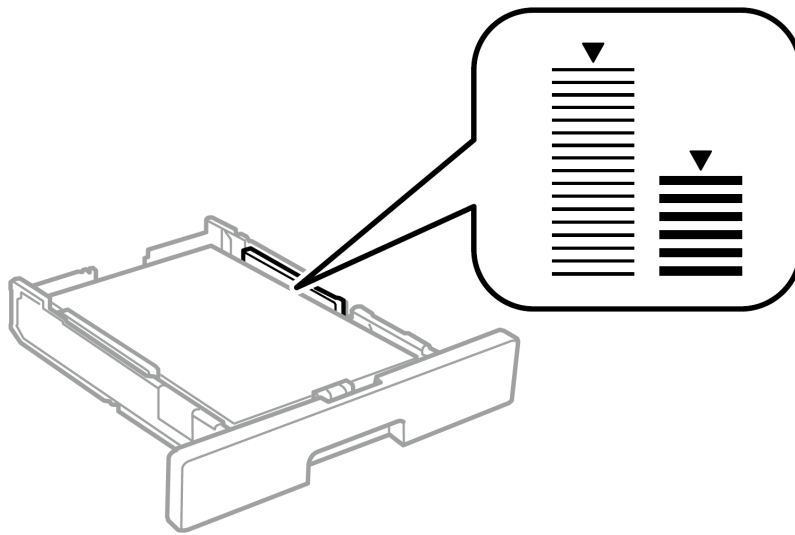
11. Wait until the charging is finished.



12. Load paper in the paper cassette with the printable side facing down.



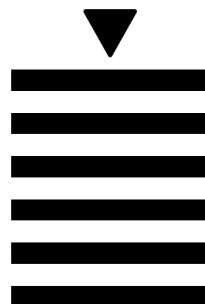
Do not load paper above the ↓ arrow mark inside the edge guide.



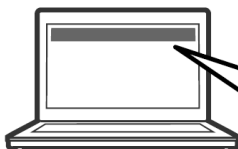
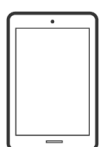
Plain paper



Thick paper



13. Set the paper size and paper type for the paper cassette. You can change these settings later.
14. When the paper setting is complete, the print quality adjustment screen is displayed. Follow the on-screen instructions to perform adjustments.
15. Connect your computer or smart device with the printer. Visit the website to install software and configure the network. Windows users can also install software and configure the network using the CD supplied.

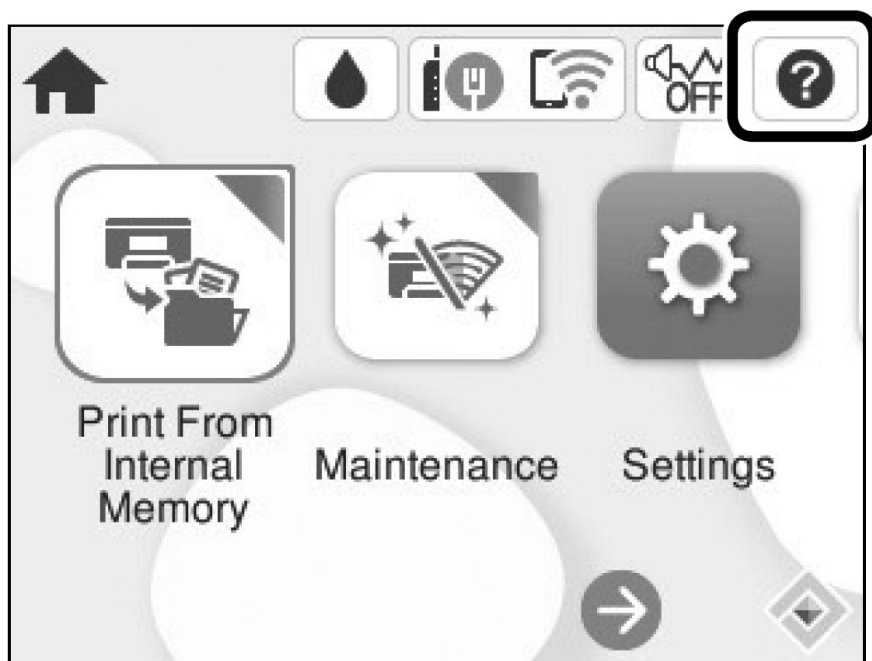


<https://epson.sn>



Troubleshooting

For troubleshooting, select for assistance. This feature provides step by step and animation instructions for most issues such as adjusting print quality and loading paper.



Radio Equipment Information

For users in Europe and UK

- **Frequency Range:** 2,400–2,483.5 MHz
- **Maximum Radio-Frequency Power Transmitted:** 20.0 dBm (EIRP)

General Notice: Other product names used herein are for identification purposes only and may be trademarks of their respective owners. Epson disclaims any and all rights in those marks.

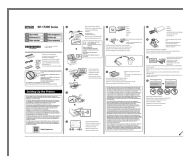
Address: 3-5, Owa 3-chome, Suwa-shi, Nagano-ken 392-8502 Japan

Tel: 81-266-52-3131

Web: <http://www.epson.com/>

The contents of this manual and the specifications of this product are subject to change without notice.

Documents / Resources



[EPSON WF-C5390 Series WorkForce Color Printer](#) [pdf] User Manual
WF-C5390 Series, WF-C5390 Series WorkForce Color Printer, WorkForce Color Printer, Color Printer, Printer