



EPSON WF-7720 Wide format All in One Printer User Manual

[Home](#) » [Epson](#) » EPSON WF-7720 Wide format All in One Printer User Manual 

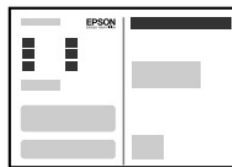
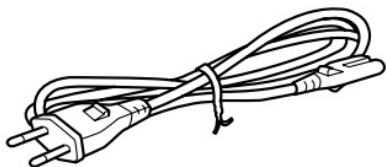
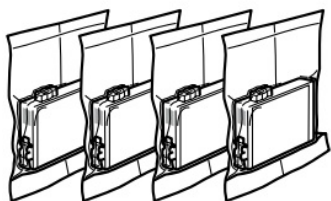
EPSON WF-7720 Wide format All in One Printer



Contents

- [1 Contents](#)
- [2 Setting up the Printer](#)
- [3 Installing Software](#)
- [4 Epson Connect](#)
- [5 Questions?](#)
- [6 Copying](#)
- [7 Print Quality Help](#)
- [8 Ink Cartridge Codes](#)
- [9 For New Zealand Users](#)
- [10 Documents / Resources](#)
 - [10.1 References](#)
- [11 Related Posts](#)

Contents



Windows



Contents may vary by location.



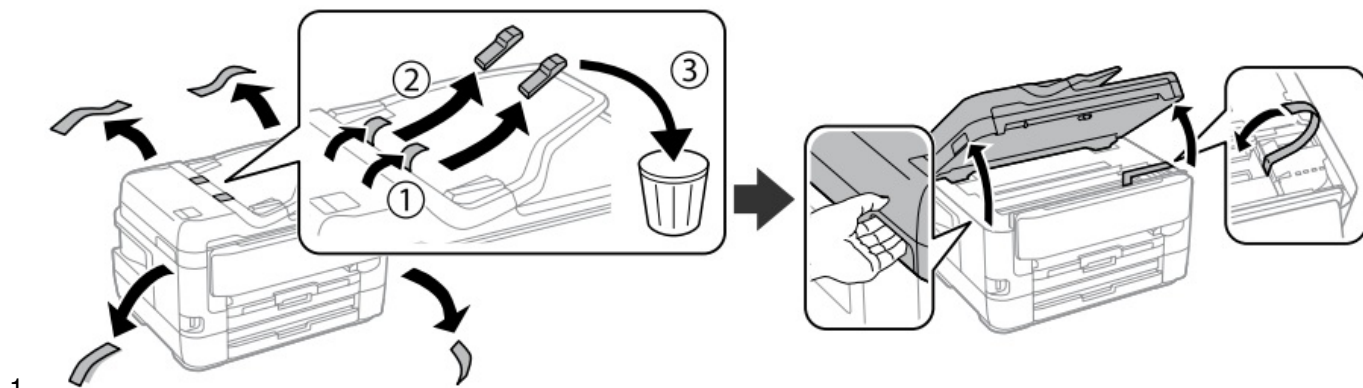
Do not open the ink cartridge package until you are ready to install it in the printer. The cartridge is vacuum packed to maintain its reliability.



Do not connect a USB cable unless instructed to do so.

Illustrations of the printer used in this manual are examples only.

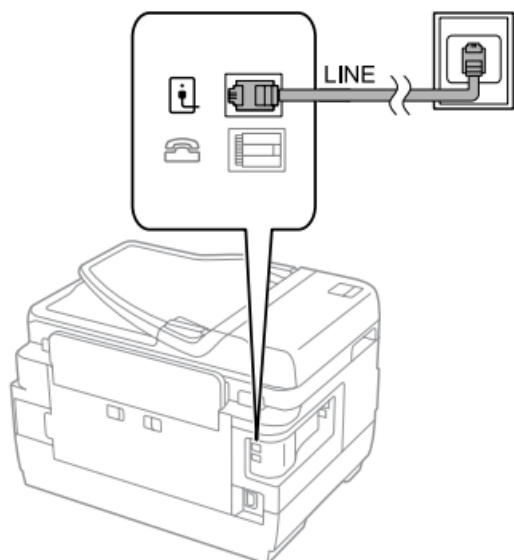
Setting up the Printer



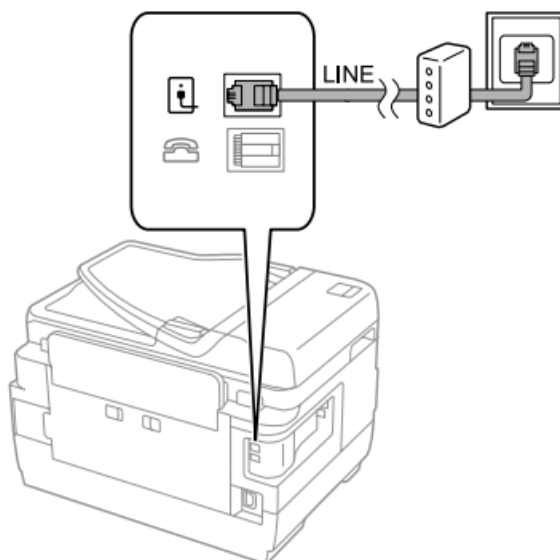
1.

Remove all protective materials.

<Connecting to PBX>



<Connecting to DSL or ISDN>



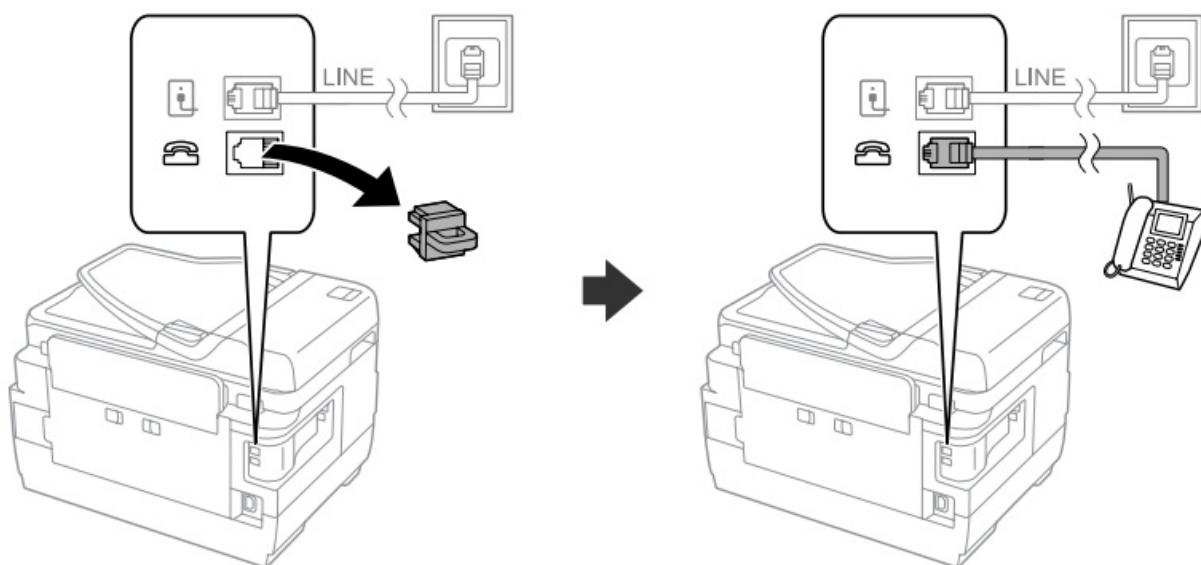
2.

Available phone cable

RJ-11 Phone Line / RJ-11 Telephone set connection

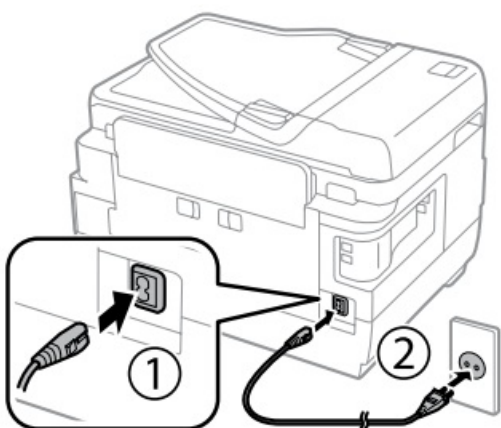
Connect a phone cable.

Depending on the area, a phone cable may be included with the printer, if so, use the cable.



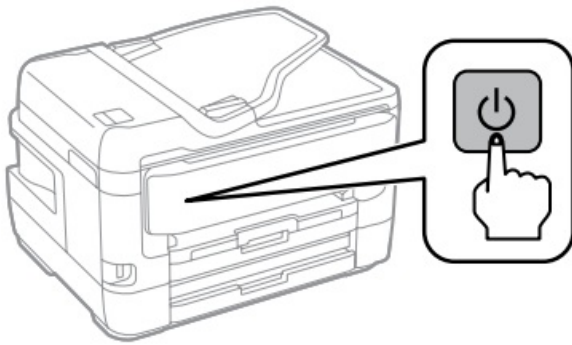
3.

If you want to share the same phone line as your telephone, remove the cap and then connect the telephone to the EXT. port.



4.

Connect and plug in.



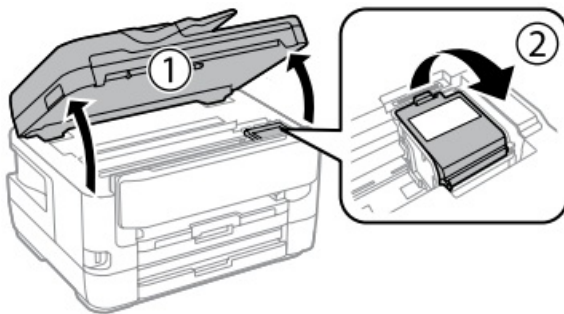
5.

Turn on.



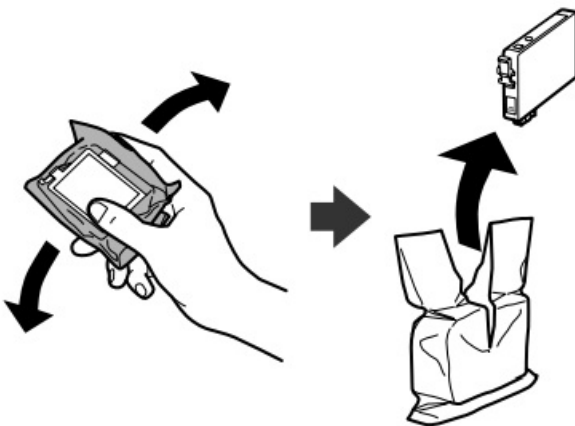
6.

Select a language, country and time.



7.

Raise the scanner unit and open the ink cartridge cover.

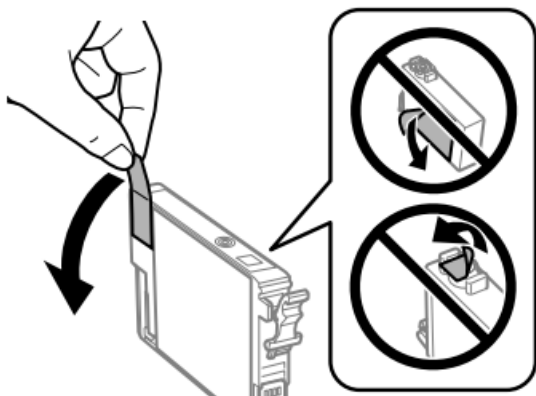


8.

Gently shake all new ink cartridges four or five times and then remove it from its package.



Do not touch the sections shown in the illustration of the cartridge.

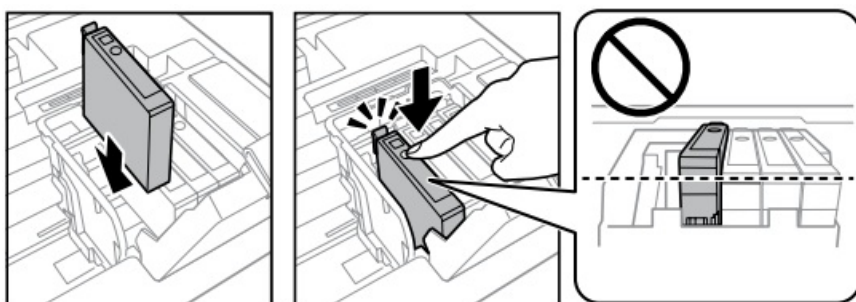


9.

Remove only the yellow tape.

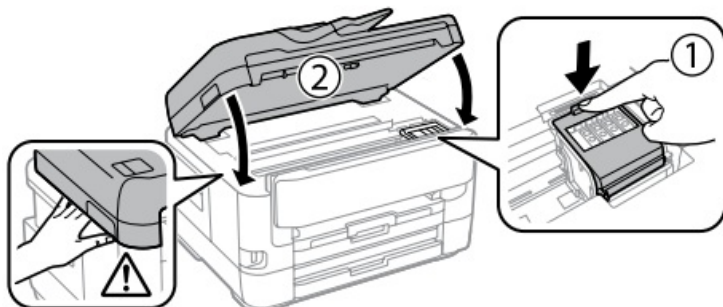
For the initial setup, make sure you use the ink cartridges that came with this printer. These cartridges cannot be saved for later use. The initial ink cartridges will be partly used to charge the print head.

These cartridges may print fewer pages compared to subsequent ink cartridges.



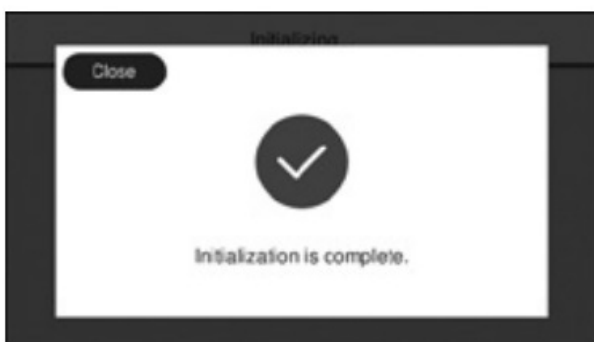
10.

Insert all four cartridges. Press each unit until it clicks.



11.

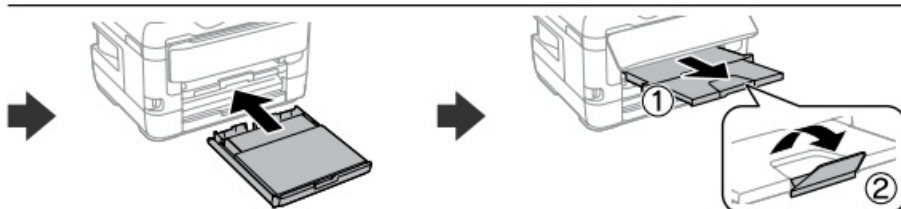
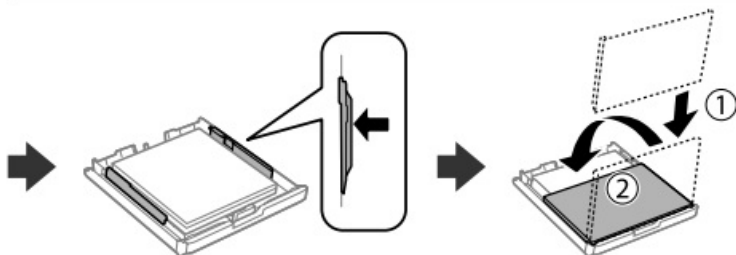
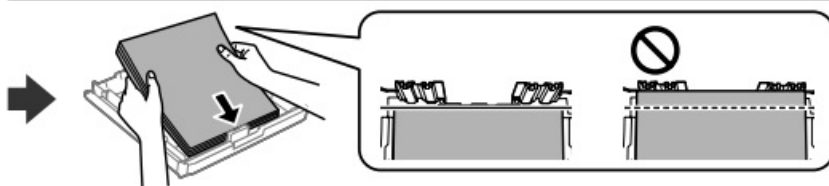
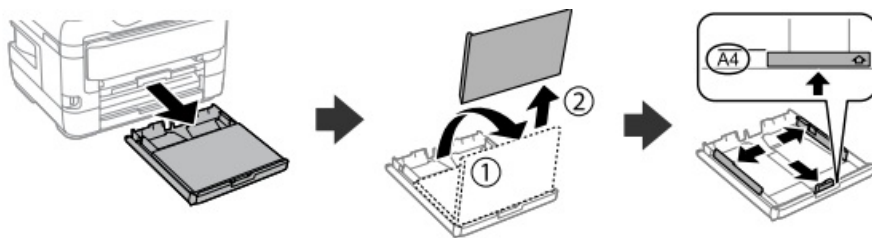
Close the ink cartridge cover and the scanner unit slowly.



12.

Wait until ink charging is finished.



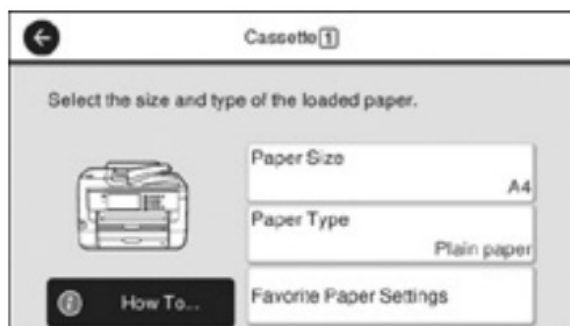


13.

Load paper in the paper cassette with the printable side facing down.

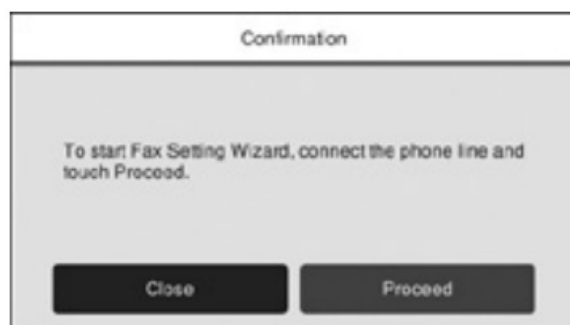
Do not load paper above the ▼ arrow mark inside the edge guide.

14.



Set the paper size and paper type for the paper cassette. You can change these settings later.

15.



Make the fax settings. You can change these settings later. If you do not want to make settings now, close the fax settings screen.

Installing Software



Insert the CD and then select A. If you need to connect multiple computers as a system administrator, select B and see the Administrator's Guide to set up the administrator's settings.

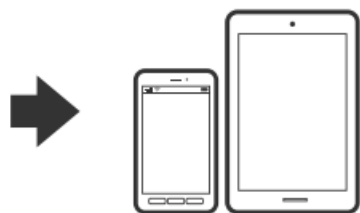
If the Firewall alert appears, allow access for Epson applications. **No CD/DVD drive**
Mac OS



Visit the website to start the setup process, install software, and configure network settings.

iOS/Android

See the User's Guide for more information on printing from a smartphone or tablet.



Epson Connect



Using your mobile device, you can print from any location worldwide to your Epson Connect compatible product. Visit the website for more information.

Questions?



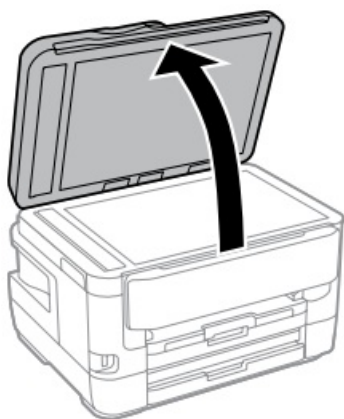
You can open the PDF manuals from the shortcut icon, or download the latest versions from the following website.



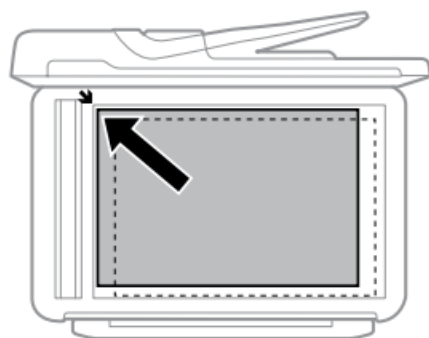
<http://www.epson.eu/Support> (Europe)

<http://support.epson.net/> (outside Europe)

Copying



1.
Open.




2.
Place the original.



- 3.



4. Tap the section shown in the illustration to enter the number of copies.
5. Make other settings as necessary.
6. Tap  to start copying.

Print Quality Help

If you see missing segments or broken lines in your printouts, print a nozzle check pattern to check if the print head nozzles are clogged. See the User's Guide for more details.



Ink Cartridge Codes

For users in Australia/New Zealand

BK	C	M	Y
Black	Cyan	Magenta	Yellow
252 252XL 254XL	252 252XL	252 252XL	252 252XL

“XL” indicates large cartridge.

For users in Asia

BK	C	M	Y
Black	Cyan	Magenta	Yellow
188	188	188	188

For New Zealand Users

General warning

The grant of a Telepermit for any item of terminal equipment indicates only that Telecom has accepted that the item complies with the minimum conditions for connection to its network. It indicates no endorsement of the

product by Telecom, nor does it provide any sort of warranty. Above all, it provides no assurance that any item will work correctly in all respects with another item of Telepermitted equipment of a different make or model, nor does it imply that any product is compatible with all of Telecom's network services.

Telepermitted equipment only may be connected to the EXT telephone port.

This port is not specifically designed for 3-wire-connected equipment.

3-wire-connected equipment might not respond to incoming ringing when attached to this port.

The automatic calling functions of this equipment must not be used to cause a nuisance to other Telecom customers.

IMPORTANT NOTICE

Under power failure conditions, this telephone may not operate. Please ensure that a separate telephone, not dependent on local power, is available for emergency use.

Windows® is a registered trademark of the Microsoft Corporation.

Mac is a trademark of Apple Inc., registered in the U.S. and other countries.

Android™ is a trademark of Google Inc.

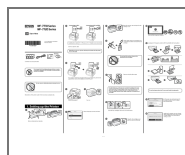
The contents of this manual and the specifications of this product are subject to change without notice.



© 2017 Seiko Epson Corporation Printed in XXXXXX

EPSON
EXCEED YOUR VISION

Documents / Resources



[EPSON WF-7720 Wide format All in One Printer](#) [pdf] User Manual

WF-7720 Wide format All in One Printer, WF-7720, Wide format All in One Printer, All in One Printer, One Printer, Printer

References

- [E support.epson.net](https://support.epson.net)
- [Manual-Hub.com - Free PDF manuals!](https://www.manual-hub.com)
- [Epson Connect - Print and Scan From Anywhere](#)
- [User Manual](#)

[Manuals+](#), [Privacy Policy](#)

This website is an independent publication and is neither affiliated with nor endorsed by any of the trademark owners. The "Bluetooth®" word mark and logos are registered trademarks owned by Bluetooth SIG, Inc. The "Wi-Fi®" word mark and logos are registered trademarks owned by the Wi-Fi Alliance. Any use of these marks on this website does not imply any affiliation with or endorsement.