



EPSON VS330 Projector Specs Instruction Manual

[Home](#) » [Epson](#) » EPSON VS330 Projector Specs Instruction Manual 



VS230/VS330/VS335W
Quick Setup

Contents

- [1 VS330 Projector Specs](#)
- [2 Connect the projector](#)
- [3 Turn on your equipment](#)
- [4 Adjust the image](#)
- [5 Using the remote control](#)
- [6 Troubleshooting](#)
- [7 Where to get help](#)
- [8 Documents / Resources](#)
 - [8.1 References](#)
- [9 Related Posts](#)

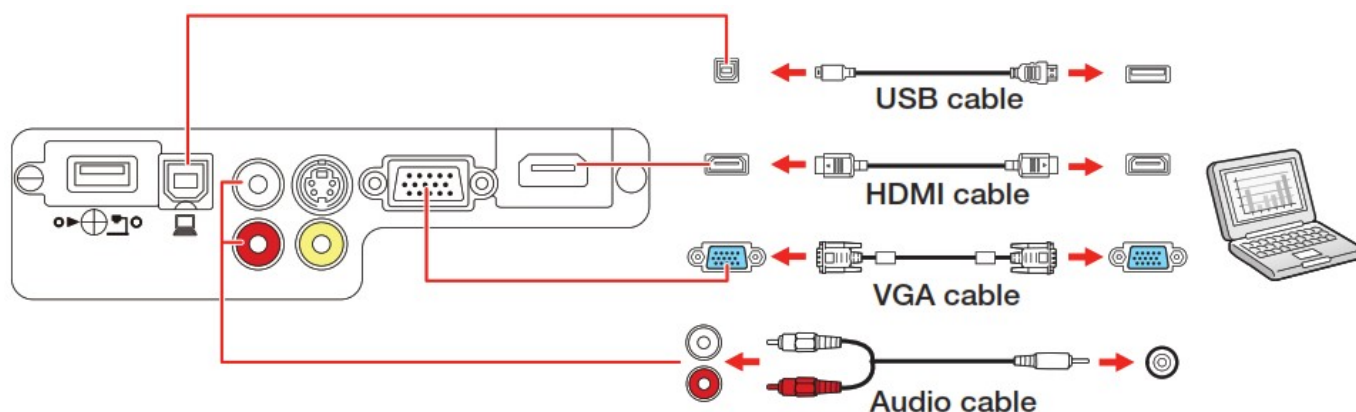
VS330 Projector Specs

Before using the projector, make sure you read the safety instructions in the online User's Guide.

Connect the projector

Choose from the following connections. See the sections below or the online User's Guide for details.

Computer



USB port

Connect the square end of a USB cable to the projector's USB-B (square) port.

Connect the flat end of the cable to any USB port on your computer.


Windows ® 2000 SP4 or later: After turning on the projector, follow the on-screen instructions to install the Epson ® USB Display software (EMP_UDSE.EXE; only on first connection). If the software screen does not display automatically, open My Computer or Computer, then double-click EPSON_PJ_UD.

Mac OS X 10.5.8 or higher: After turning on the projector, the setup folder for USB Display appears in the Finder. Double-click USB Display Installer and follow the on-screen instructions to install the Epson USB Display software (only on first connection).

Note: If you have problems installing the USB Display software, make sure the USB Type B setting in the projector's Extended menu is set to USB Display.

See the online User's Guide for instructions.

Computer port

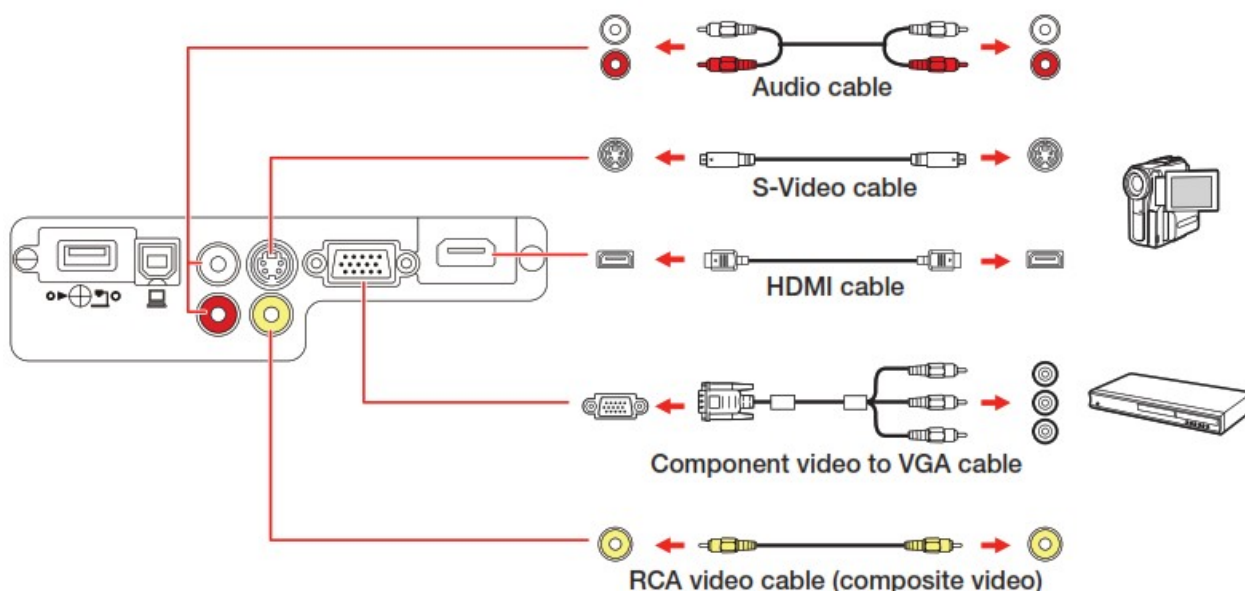
Connect one end of a VGA cable to the projector's Computer port, and the other end to your computer's  monitor port. If you are using a laptop, switch it to external display (see "Troubleshooting"). You can also connect an audio cable.

HDMI port

Connect one end of an HDMI cable to the projector's HDMI port and the other end to an HDMI port on your computer.

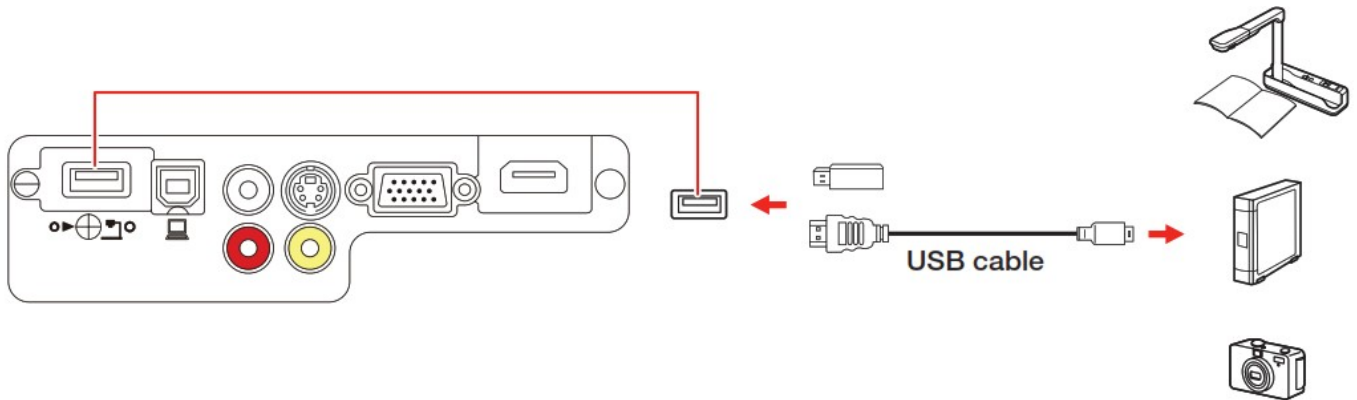
Video device

Connect up to 4 video devices and use the Source Search button on the remote control to switch between them.




Camera, USB device, or Epson DC-06 document camera

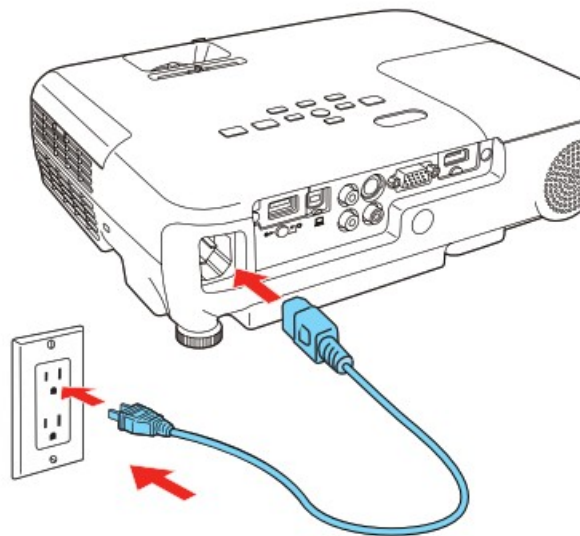
Connect a digital camera, USB flash drive, USB storage device, or Epson DC-06 document camera to the projector's USB-A (flat) port.



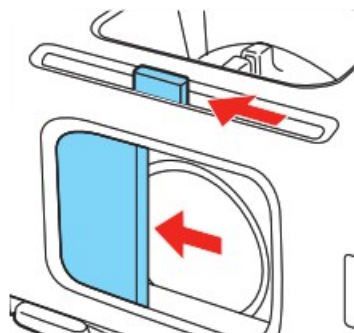
If you connect a digital camera, USB flash drive, or USB storage device, you can use the projector's PC Free feature. See the online User's Guide for details.

Turn on your equipment

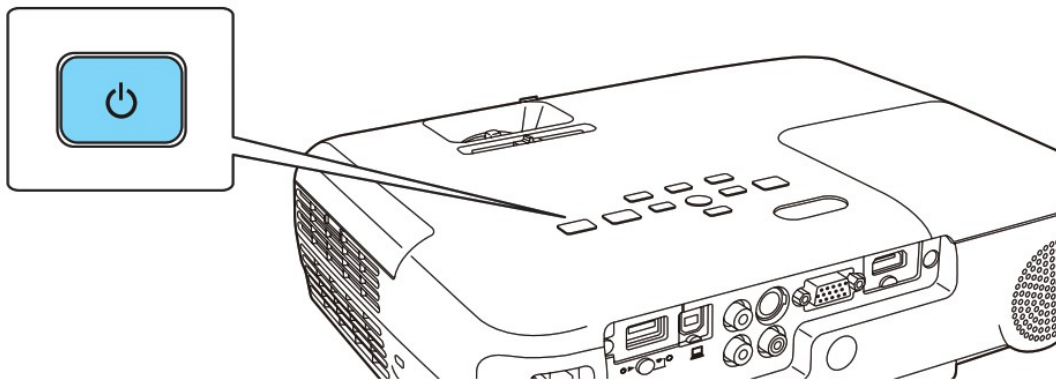
1. Turn on your computer or video source.
2. Plug in the projector. The  power light on the projector turns blue.



3. Open the A/V Mute slide all the way.



4. Press the power button on the projector or remote control. The projector beeps, the Status light flashes blue, and then stays on.



Note: To shut down the projector, press the power button twice, then unplug it. You don't have to wait for the projector to cool down.

5. The default language of the menu system is English. To select another language, press the Menu button on the projector or remote control.

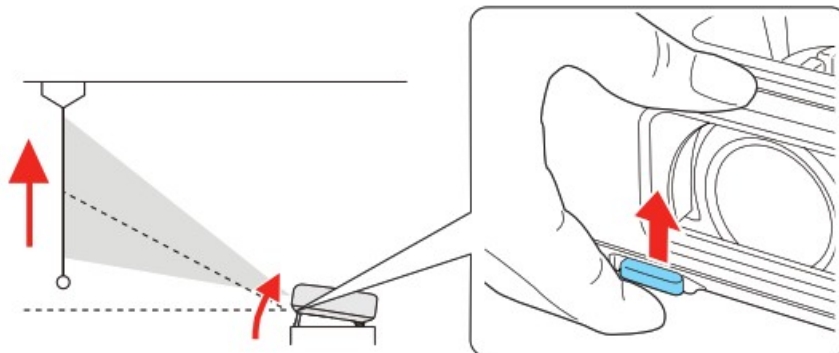
Select Extended and press Enter. Select Language and press Enter. Select your language and press Enter. Press the Menu button to exit the menu system.

Adjust the image

1. If you don't see an image, press the Source Search button on the projector or remote control to select the image source.

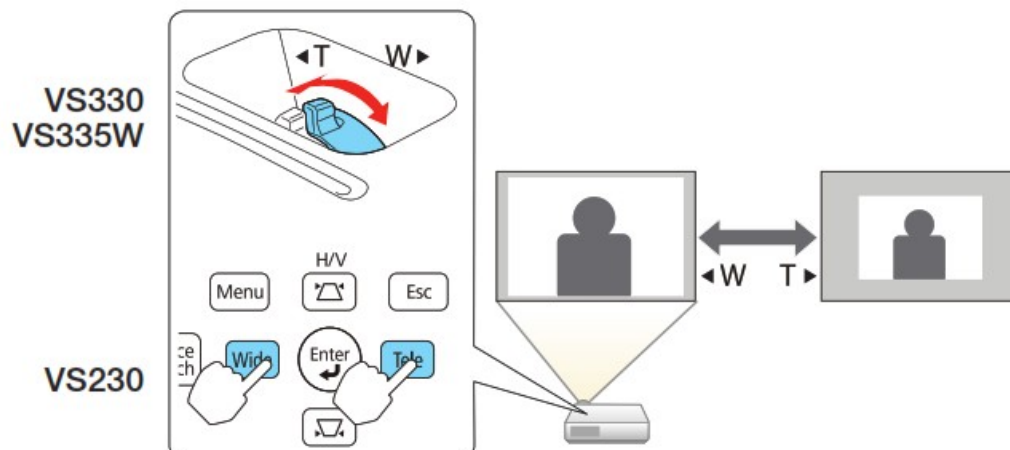
Note: If you still see a blank screen or have other display problems, see the troubleshooting tips on the right.

2. To raise the image, press the foot release button and lift the front of the projector. Release the button to lock the foot in position.

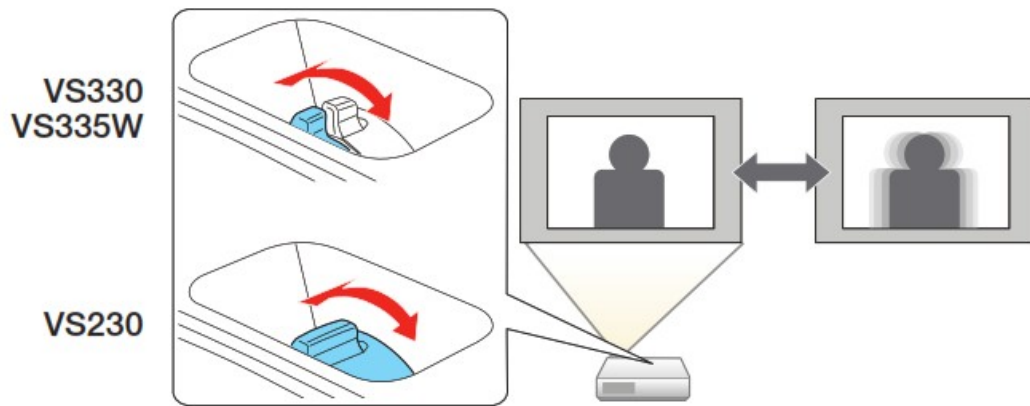




3. VS330/VS335W: To enlarge or reduce the image, turn the zoom ring.

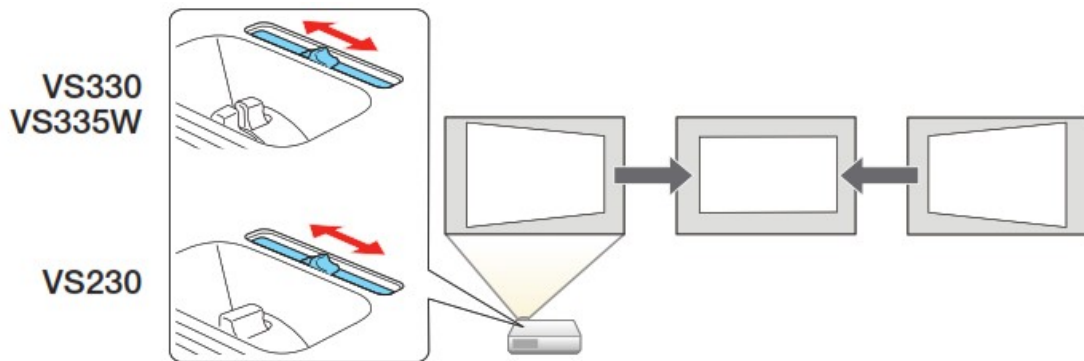
VS230: To enlarge or reduce the image, press the Tele (reduce) or Wide (enlarge) buttons on the projector.







4. Turn the focus ring to sharpen the image.



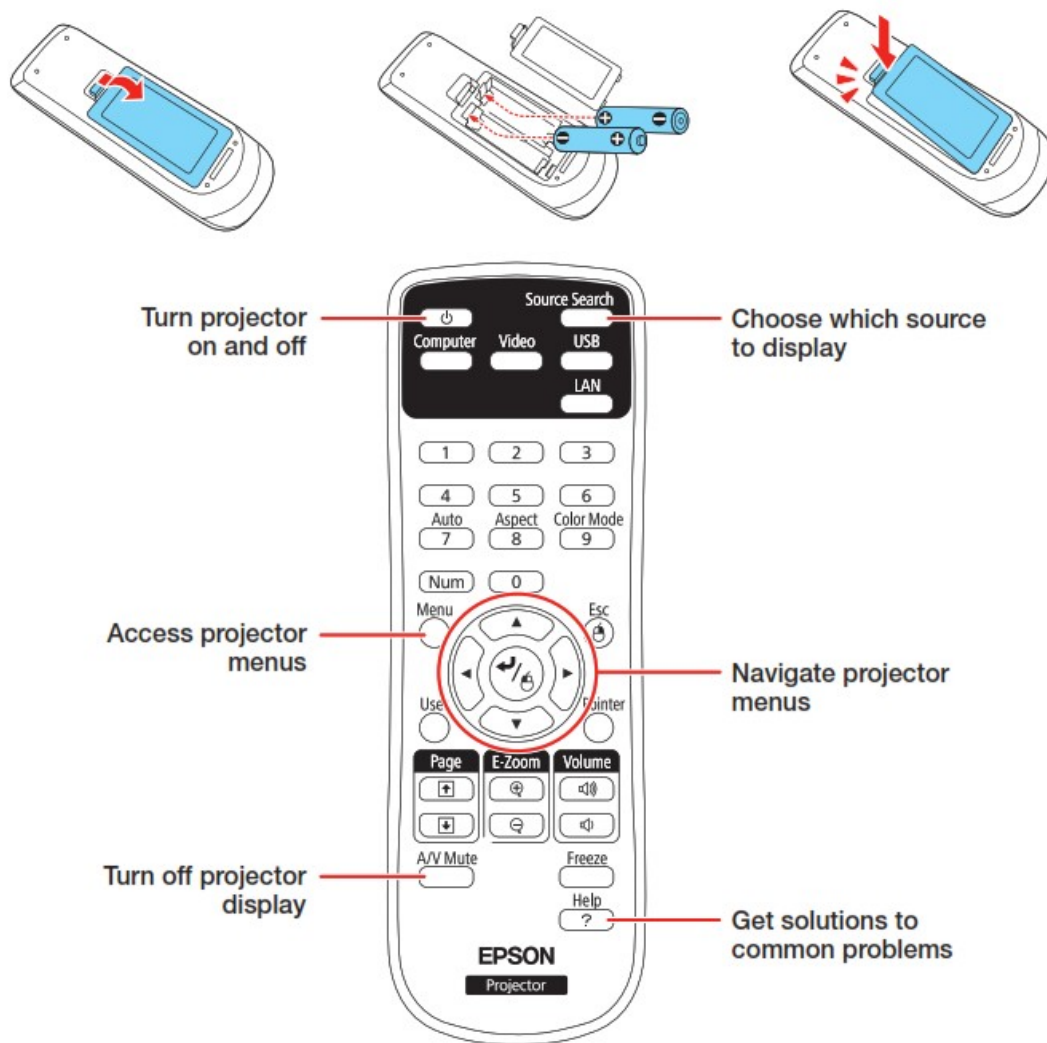
5. If your image looks like  or , you may have placed the projector off to one side of the screen at an angle. Place the projector directly in front of the center of the screen, facing the screen squarely. If you can't move the projector, use the horizontal keystone slider on the projector to correct the image.



6. Your projector automatically adjusts images that look like  or , but if necessary you can press the  or  button on the projector to correct it.

Using the remote control


Make sure the batteries are installed as shown (two AA batteries).



For more information on using the remote control, see the online User's Guide.

Troubleshooting

If you see a blank screen or the No signal message after turning on your computer or video device, check the following:

- Make sure the Status light on the projector is blue and not flashing, and the A/V Mute slide is open.
- Press the Source Search button on the projector or the remote control to switch to the correct image source, if necessary.
- If you're using a Windows laptop, press the function key on your keyboard that lets you display on an external monitor. It may be labeled CRT/LCD or have an icon such as . You may have to hold down the Fn key while pressing it (such as Fn + F7). Wait a moment for the display to appear.
- If you're using a Mac laptop, open System Preferences and select Displays. Select the Display or Color LCD option if necessary, then click the Arrange or Arrangement tab, and select the Mirror Displays checkbox.

Where to get help

Manual

For more information about using the projector, click the icon on your desktop to access the online User's Guide (requires an Internet connection). If you don't have a User's Guide icon, you can install it from the projector CD or go to the Epson website, as described below.

Telephone support services

To use the Epson® PrivateLine® Support service, call (800) 637-7661. This service is available for the duration of your warranty period. You may also speak with a support specialist by calling (562) 276-4394 (U.S.) or (905) 709-3839 (Canada).

Support hours are 6 AM to 8 PM, Pacific Time, Monday through Friday, and 7 AM to 4 PM, Pacific Time, Saturday. Days and hours of support are subject to change without notice. Toll or long distance charges may apply.

Internet support

Visit epson.com/support (U.S.) or epson.ca/support (Canada) for solutions to common problems. You can download utilities and documentation, get FAQs and troubleshooting advice, or e-mail Epson.

Registration

Register today to get product updates and exclusive offers. You can use the CD included with your projector, or register online at epson.com/webreg.



EPSON is a registered trademark and EPSON Exceed Your Vision is a registered logomark of Seiko Epson Corporation. Private Line is a registered trademark of Epson America, Inc.

Mac and Mac OS are trademarks of Apple Inc., registered in the U.S. and other countries.

General Notice: Other product names used herein are for identification purposes only and may be trademarks of their respective owners. Epson disclaims any and all rights in those marks.

This information is subject to change without notice.

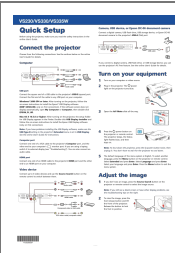
© 2013 Epson America, Inc., 9/13

Printed in XXXXXX


CPD-39519

<https://manual-hub.com/>

Documents / Resources

	<p>EPSON VS330 Projector Specs [pdf] Instruction Manual VS330 Projector Specs, VS330, Projector Specs, Specs</p>
---	--

References

- [E Epson Canada | Homepage](#)
- [E Epson® Official Support](#)
- [E Epson® Official Support](#)
- [E Epson Product Registration](#)
-  [Manual-Hub.com - Free PDF manuals!](#)
- [User Manual](#)

[Manuals+](#), [Privacy Policy](#)

This website is an independent publication and is neither affiliated with nor endorsed by any of the trademark owners. The "Bluetooth®" word mark and logos are registered trademarks owned by Bluetooth SIG, Inc. The "Wi-Fi®" word mark and logos are registered trademarks owned by the Wi-Fi Alliance. Any use of these marks on this website does not imply any affiliation with or endorsement.