



EPSON Updating Firmware User Manual

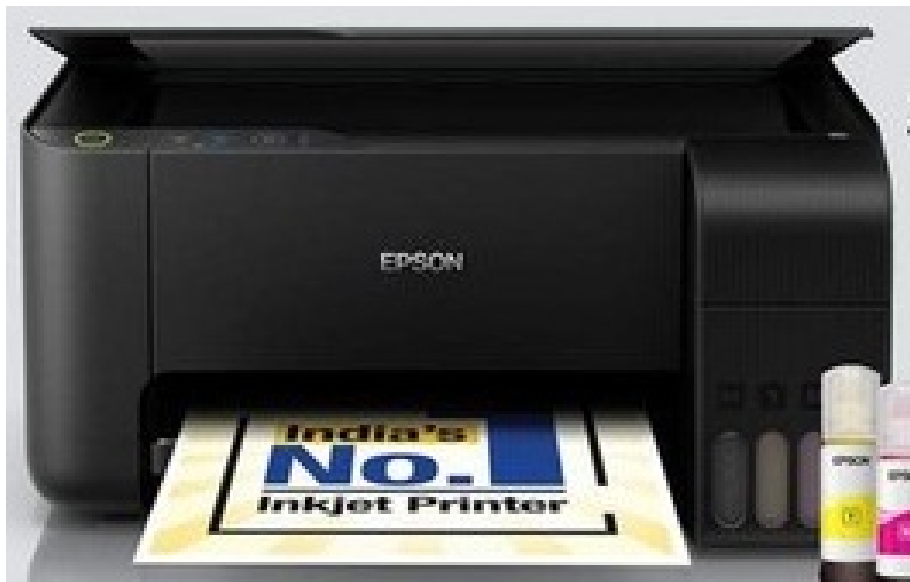
[Home](#) » [Epson](#) » EPSON Updating Firmware User Manual 

Contents

- [1 EPSON Updating Firmware](#)
- [2 Updating Firmware](#)
- [3 Overview](#)
- [4 How to Update Firmware](#)
- [5 Documents / Resources](#)
- [6 Related Posts](#)

EPSON

EPSON Updating Firmware



Updating Firmware

About this Guide

This guide consists of 2 sections

- Overview – Where to identify the current KDS firmware version.
- How to Update Firmware – The procedure to update the KDS firmware. This guide assumes that you already have one of these KDS systems setup as described in the Epson KDS Quick Start Guides.

This guide is relevant for

- KDS FW: v2.50 and above
- KDS Utility (Windows): v2.5.0.0 and above

Overview

New releases of KDS firmware will have new features or enhancements and fixes for any preexisting issues. Updating the firmware is only recommended if there is a good reason to do so. The firmware version can be identified within the KDS utility and it is also located on the KDS startup splash screen during power up.



Figure 0.1 – Startup screen of the KDS

EPSON is a registered trademark and EPSON Exceed Your Vision is a registered logomark of Seiko Epson Corporation. All other product and brand names are trademarks and/or registered trademarks of their respective companies. Epson disclaims any and all rights in these marks. Copyright 2022 Seiko Epson Corporation.

How to Update Firmware

The firmware is provided as an RCX file and the Configuration Utility is used to update the firmware on the KDS devices.

Step 1: Click on Devices and ensure that all connected devices are online – showing a Green status.

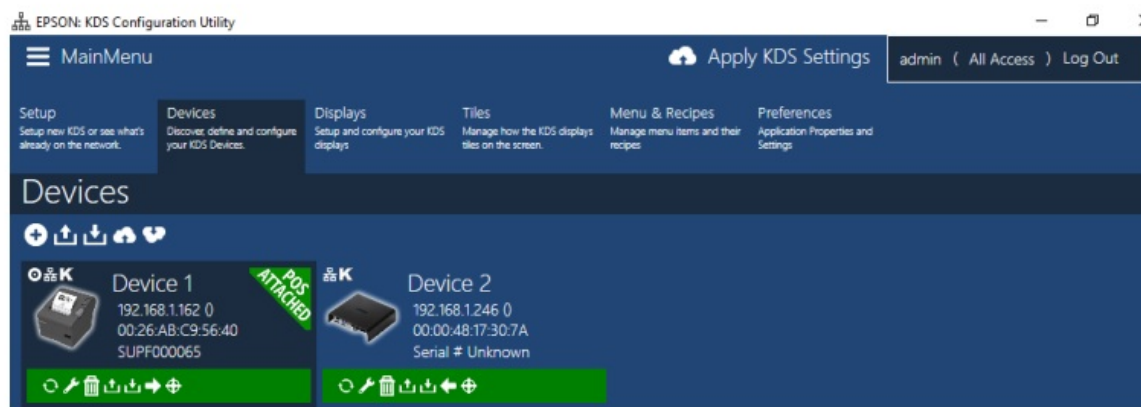


Figure 1.1 – All connected devices are Online

Step 2 : Click on Main Menu and click “Update Firmware”.

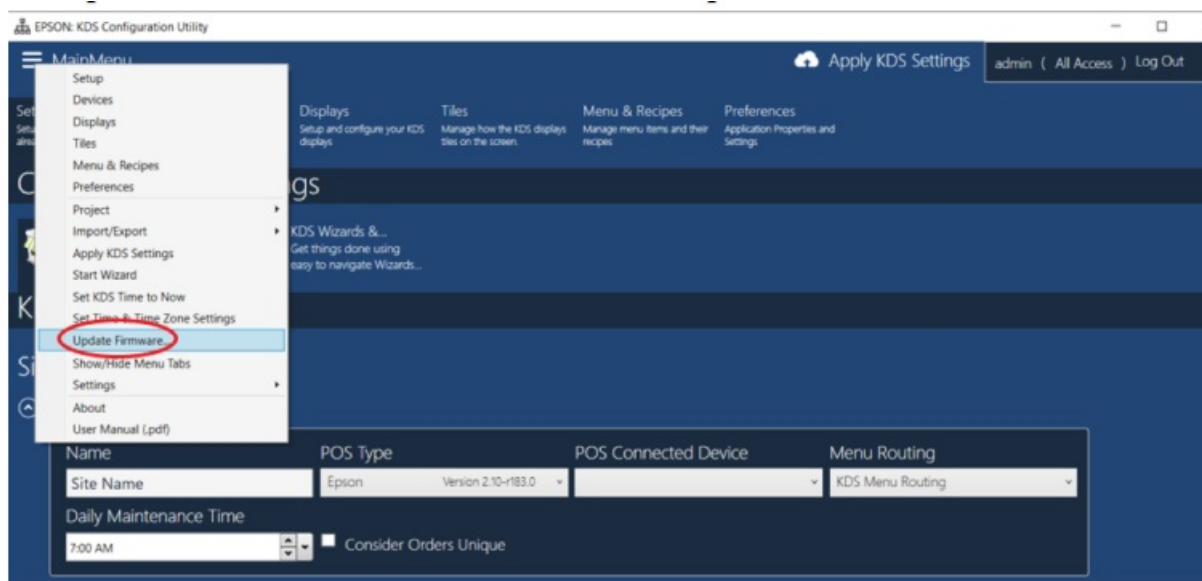


Figure 1.2 – Updating the Firmware

Step 3: Browse to where you placed the RCX file and select it.

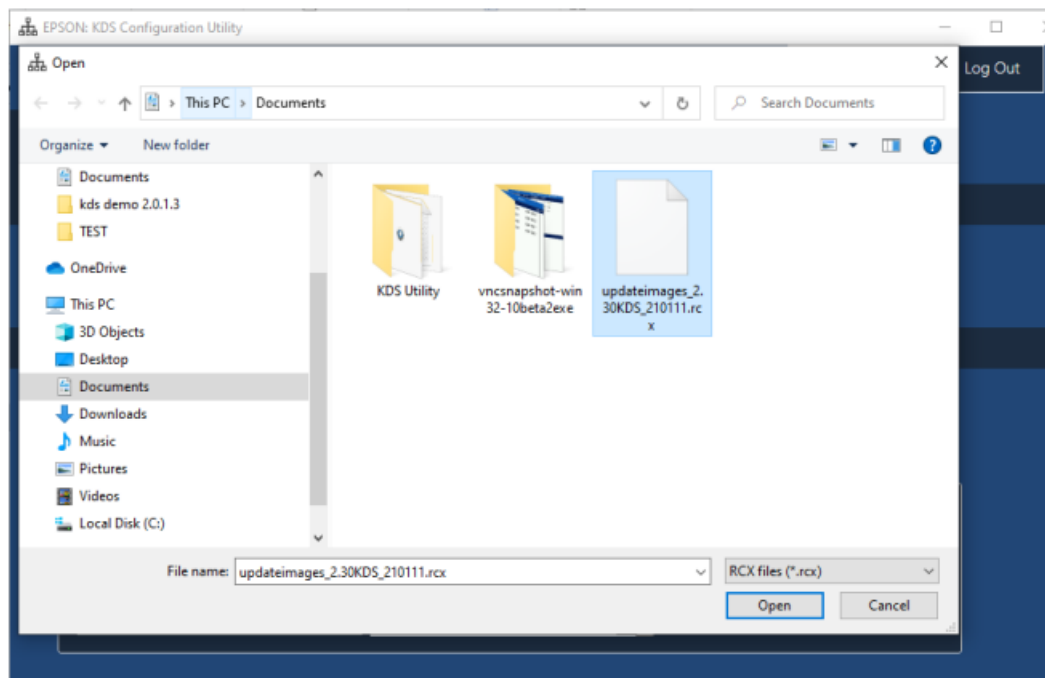


Figure 1.3 – Choosing the RCX File

Step 4: Wait until the update is completed.

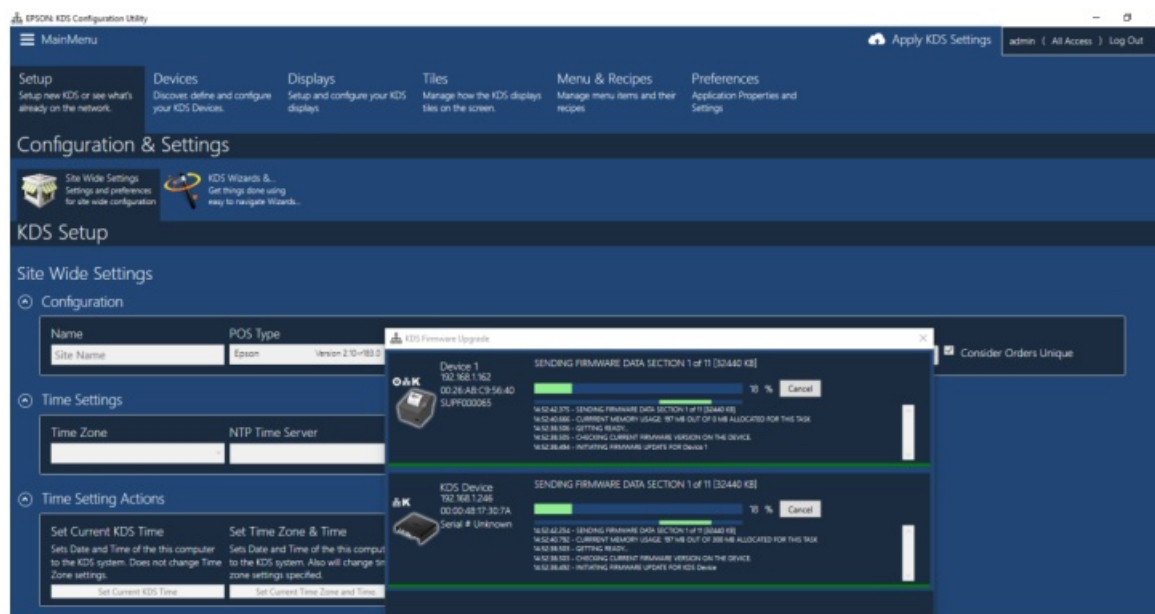



Figure 1.4 – Firmware Update in Progress

The system will start the update process which should not be interrupted. The whole process could take up to 20 minutes per device. Let the update run until completion and do not interrupt it. It is best to disable any sleep settings on the PC and not run any other applications that could conflict. In the event the update does not succeed it can be retried. In rare circumstances, a USB flash drive may be required to recover a faulty update.

Documents / Resources

	<p>EPSON Updating Firmware [pdf] User Manual Updating Firmware</p>
--	--