



EPSON TM-S9000II-NW Network Multifunction Teller Device User Guide

[Home](#) » [Epson](#) » EPSON TM-S9000II-NW Network Multifunction Teller Device User Guide 

Contents

- [1 EPSON TM-S9000II-NW Network Multifunction Teller Device](#)
- [2 Documents / Resources](#)
 - [2.1 References](#)
- [3 Related Posts](#)

EPSON

EPSON TM-S9000II-NW Network Multifunction Teller Device



For detailed information on operation and safe use of the product, refer to the other manuals that are included

with the product and are available on the Epson website.



Setup and cleaning procedures can also be viewed in the video.



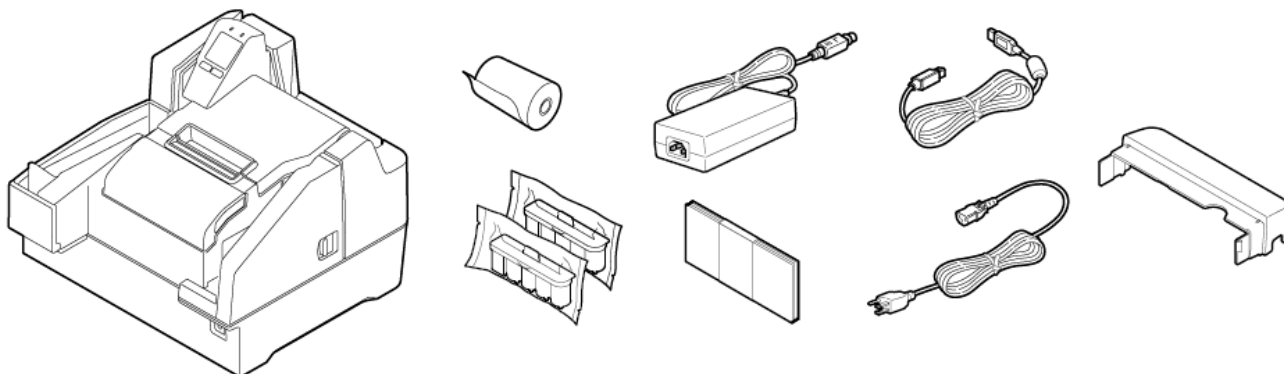
- <https://www.epson-biz.com/?prd=tms9k2nw&inf=video>

For more details, see TM-S9000II-NW Technical Reference Guide.

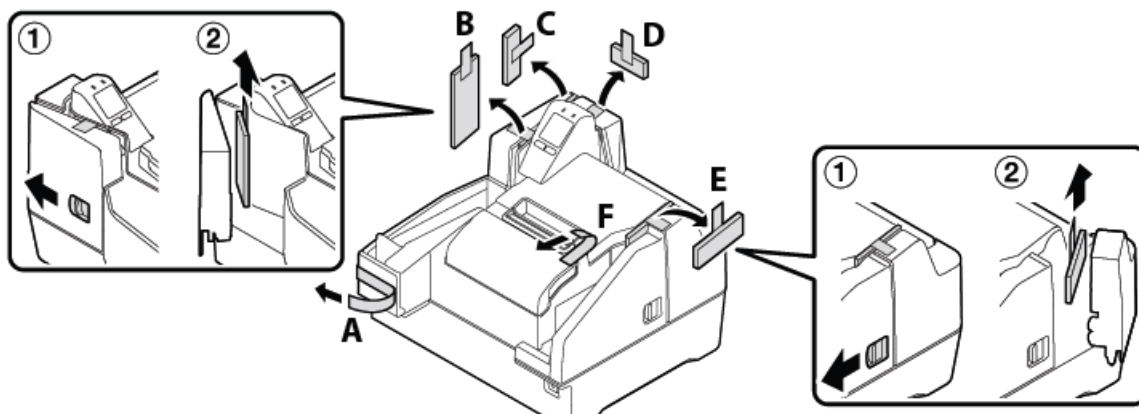


- <https://www.epson-biz.com/?prd=tms9k2nw&inf=manual>

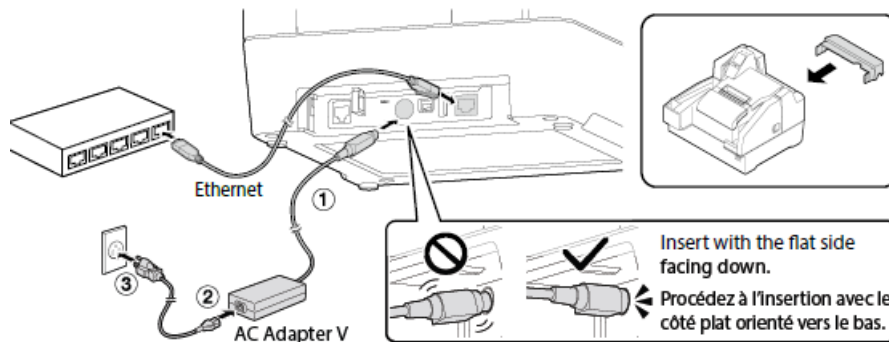
1. Unpack. Make sure that you have the all items shown below.



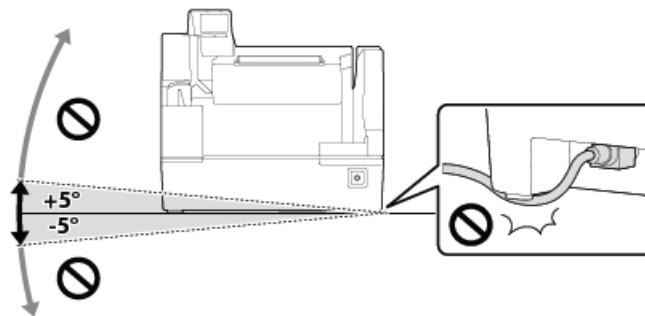
2. Remove all the protective materials. Make sure to remove the materials inside the product.




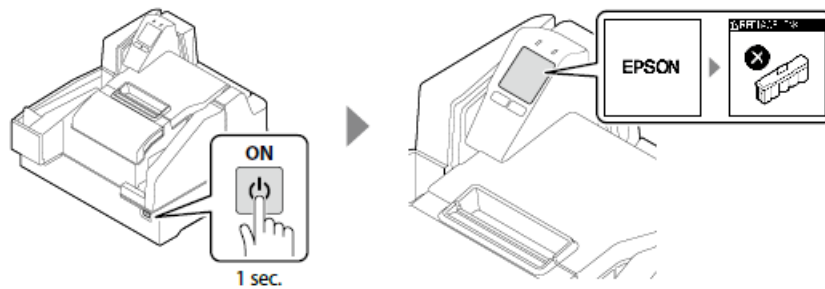
3. Connect to a hub and to the power source. Insert each plug as far as it goes with the correct orientation.



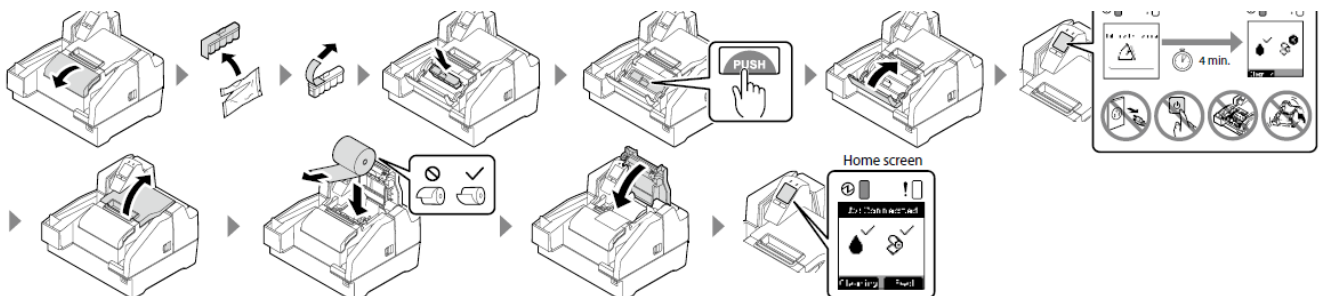
4. Place the product on a flat surface. Do not tilt it more than 5 degrees. Be careful not to let the cables get caught under the product.



5. Press  the button to turn the product on. The screen will prompt you to install the ink cartridge.



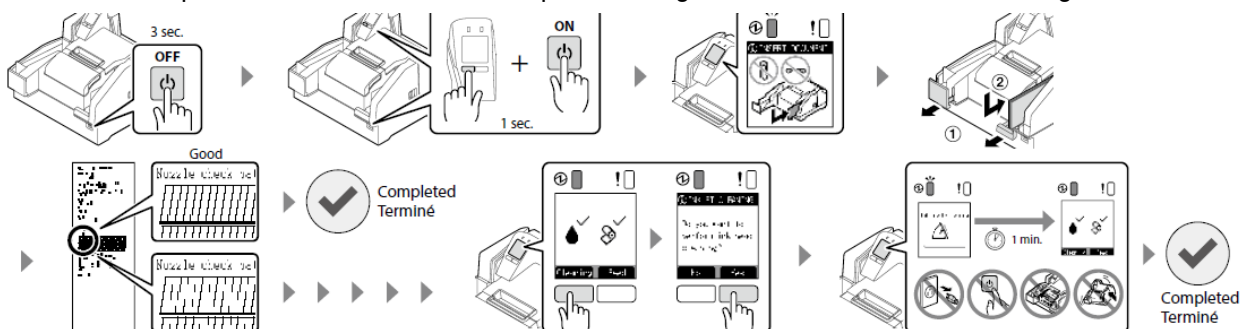
6. Follow the on-screen instructions to install the ink cartridge and then the roll paper.



When you finish installing the consumables, the home screen

• Checking Nozzles and Cleaning Ink Head

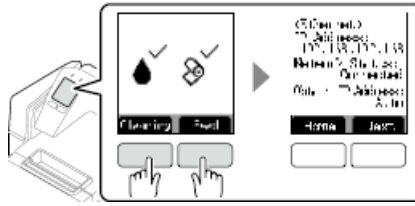
For a test print, turn the product off and then back it on while holding down the left button. If the test pattern is faint, press the left button and then press the right button to run a head cleaning.



• Checking the Network Settings

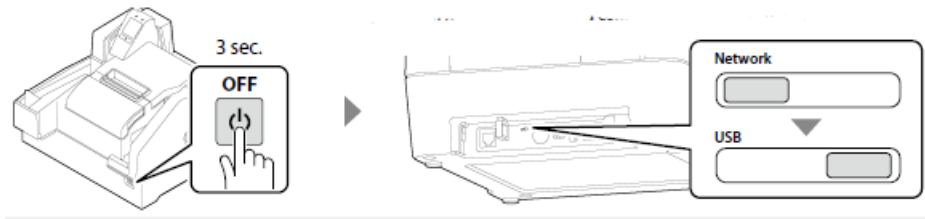
Press the two buttons simultaneously for 2 seconds to display the settings on the screen.

The default connection mode is network. Turn off the product and then change the mode to USB using the switch on the back.

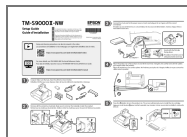


- **For Connecting the Product via USB**

The default connection mode is network. Turn off the product and then change the mode to USB using the switch on the back.



Documents / Resources



[EPSON TM-S9000II-NW Network Multifunction Teller Device](#) [pdf] User Guide
TM-S9000II-NW, Network Multifunction Teller Device, Multifunction Teller Device, Network Teller Device, Teller Device

References

- [E TM-S9000II-NW Technical Reference Guide - Reference Guide - Thermal line Printer - Download - POS - Epson](#)
- [E YouTube](#)