

**EPSON**  
**TM-H6000VI**  
**Multi Function**  
**POS Printer**  
**with Check**  
**Processing**



# EPSON TM-H6000VI Multi Function POS Printer with Check Processing User Guide

[Home](#) » [Epson](#) » EPSON TM-H6000VI Multi Function POS Printer with Check Processing User Guide 

## Contents

- [1 EPSON TM-H6000VI Multi Function POS Printer with Check Processing](#)
- [2 FAQs](#)
- [3 WHAT INBOX](#)
- [4 OVERVIEW](#)
- [5 INSTALLATION INSTRUCTION](#)
- [6 MORE INFO](#)
- [7 Documents / Resources](#)
  - [7.1 References](#)

# EPSON

**EPSON TM-H6000VI Multi Function POS Printer with Check Processing**

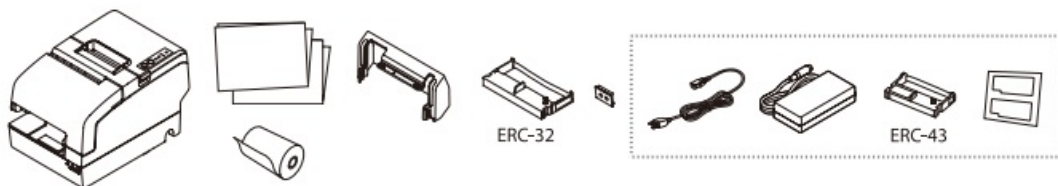


## FAQs

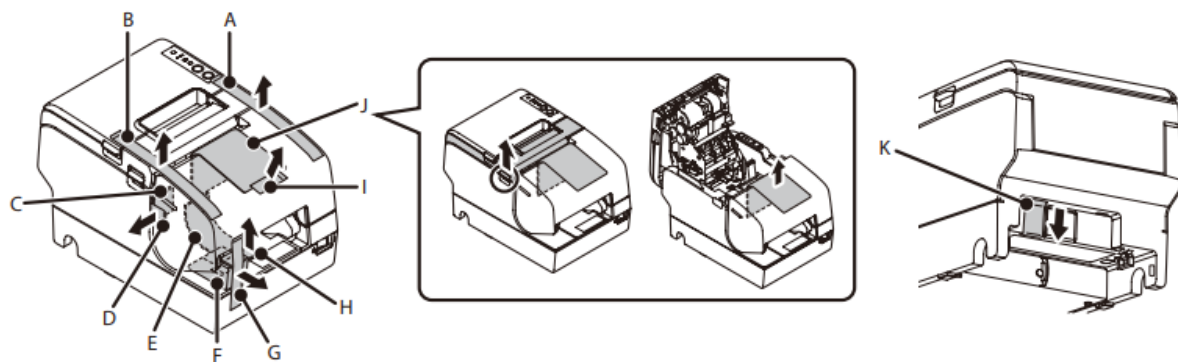
- **Q: Are all accessories shown in the manual included with the product?**
  - **A:** Depending on the model, the accessories in the broken line box may not be included. The shape of the accessories varies between models and areas.
- **Q: Where can I find additional safety information?**
  - **A:** Additional safety information can be found in the Important Safety document included with the package or in the User's Manual on the website.

Depending on the model, the accessories in the broken line box may not be included. The shape of the accessories varies between models and areas.

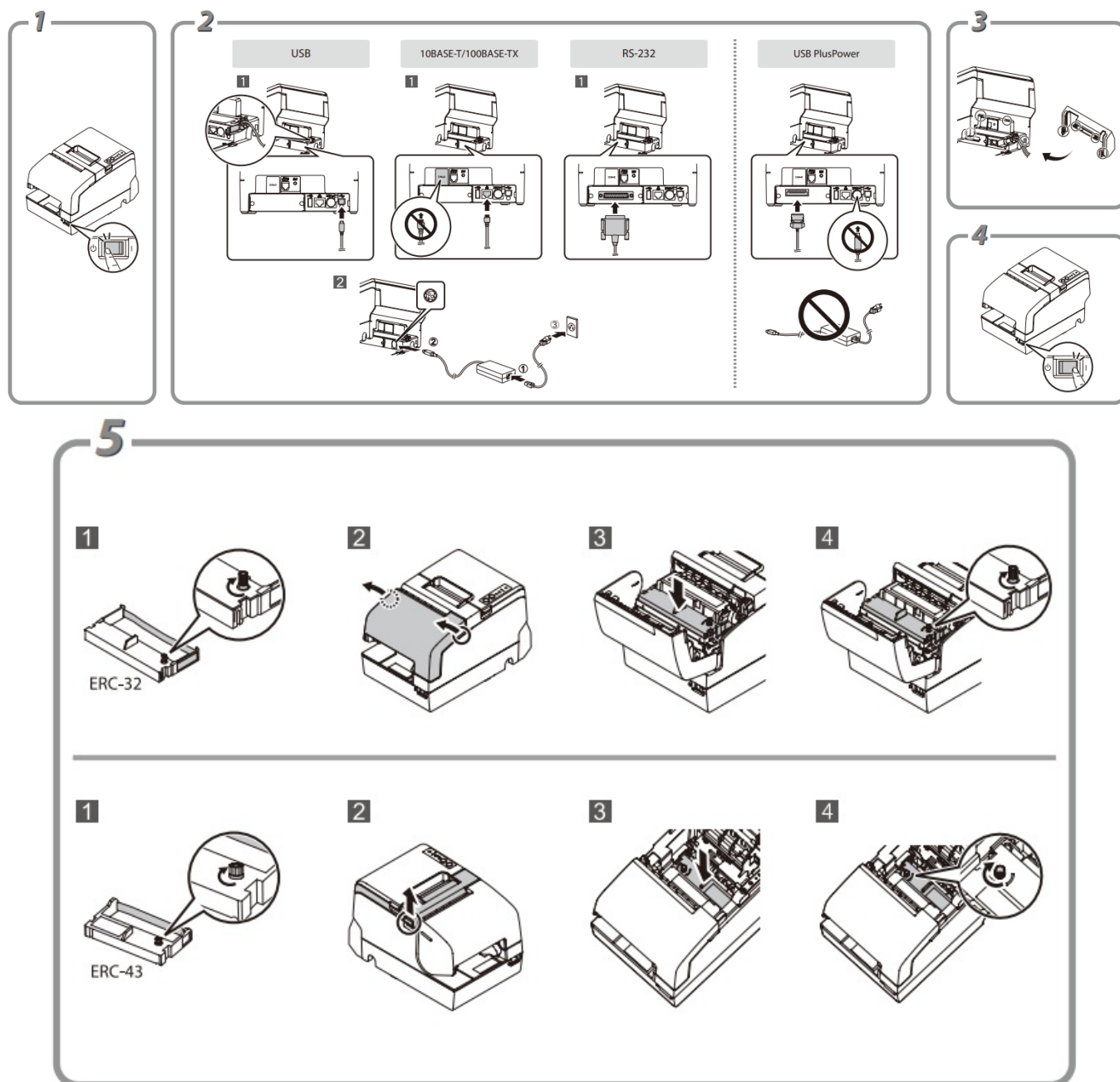
## WHAT INBOX

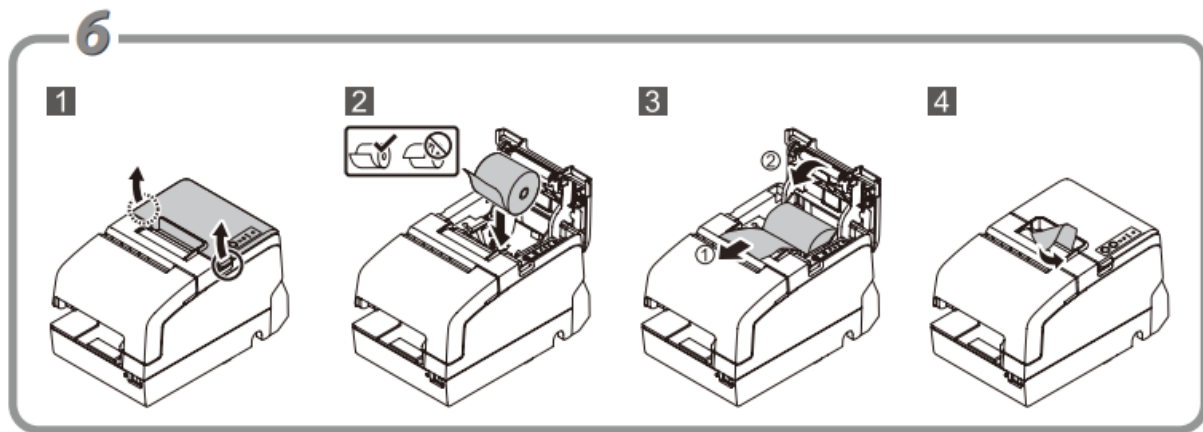


## OVERVIEW



## INSTALLATION INSTRUCTION





## MORE INFO

For detailed information and safety recommendations, refer to the Important Safety included with the package, or User's Manual on the website.



## Documents / Resources



[EPSON TM-H6000VI Multi Function POS Printer with Check Processing](#) [pdf] User Guide  
 TM-H6000VI Multi Function POS Printer with Check Processing, TM-H6000VI, Multi Function P  
 OS Printer with Check Processing, POS Printer with Check Processing, with Check Processing,  
 Check Processing, Processing

## References

- [E Epson Setup Navi | epson.sn](#)
- [User Manual](#)

[Manuals+](#), [Privacy Policy](#)

This website is an independent publication and is neither affiliated with nor endorsed by any of the trademark owners. The "Bluetooth®" word mark and logos are registered trademarks owned by Bluetooth SIG, Inc. The "Wi-Fi®" word mark and logos are registered trademarks owned by the Wi-Fi Alliance. Any use of these marks on this website does not imply any affiliation with or endorsement.