

EPSON

EPSON
SC-P20500
Series Large
Format Printer



EPSON SC-P20500 Series Large Format Printer Installation Guide

[Home](#) » [Epson](#) » EPSON SC-P20500 Series Large Format Printer Installation Guide 

Contents

- [1 EPSON SC-P20500 Series Large Format Printer](#)
- [2 Instructions](#)
- [3 Meaning of Symbols](#)
- [4 Choosing a Place for the Printer](#)
- [5 Unpacking](#)
- [6 Assembly](#)
- [7 Printer Installation](#)
- [8 Initial Settings](#)
- [9 Installing the Software](#)
- [10 Using the Printer](#)
- [11 Documents / Resources](#)
 - [11.1 References](#)
- [12 Related Posts](#)

EPSON

EPSON SC-P20500 Series Large Format Printer



Specifications

- **Languages:** English (EN), French (FR), German (DE), Dutch (NL), Italian (IT), Spanish (ES), Portuguese (PT)
- **Assembly:** EN, FR, DE, NL – 10
- **Software Installation:** EN, FR, DE, NL – 30
- **Printer Usage:** EN, FR, DE, NL – 34

When Handling Ink Cartridges

- Keep ink cartridges out of the reach of children and do not drink their contents.
- Store ink cartridges in a cool, dark place.
- If ink gets on your skin, wash it off with soap and water. If ink gets in your eyes, flush them immediately with water.
- Do not use an ink cartridge beyond the expiration date printed on the cartridge carton.
- Use up the ink cartridge within a year of installation for best results.
- Do not dismantle or refill ink cartridges as it could damage the print head.
- Avoid touching the ink supply port, its surrounding area, and the IC chip on the side of the ink cartridge.

Meaning of Symbols

- **Warning:** Warnings must be followed to avoid serious bodily injury.
- **Caution:** Cautions must be followed to avoid bodily injury.
- **Important:** Must be followed to avoid damage to this product.
- **Note:** Contains useful or additional information on the operation of this product.

Frequently Asked Questions (FAQ):

Q: Can I use third-party ink cartridges with this printer?

A: It is recommended to use genuine ink cartridges provided by the manufacturer to ensure optimal performance and print quality.

The use of third-party cartridges may affect the printer's functionality and print results.

Instructions

Safety Instructions

Read these instructions in their entirety before assembling the product, and be sure to follow the safety instructions in the printer's User's Guide when using the product.

When using the printer

- Do not block or cover the openings in the printer.
- Do not insert objects through the slots. Take care not to spill liquid on the printer.
- Use only the power cord that comes with the printer. Use of another cord may result in fire or electric shock.
- Except as specifically explained in your documentation, do not attempt to service the printer yourself.
- Unplug the printer and refer servicing to qualified service personnel under the following conditions: The power cord or plug is damaged; liquid has entered the printer; the printer has been dropped or the cabinet damaged;





the printer does not operate normally or exhibits a distinct change in performance.

- Do not put your hand inside the printer or touch the ink cartridges during printing.

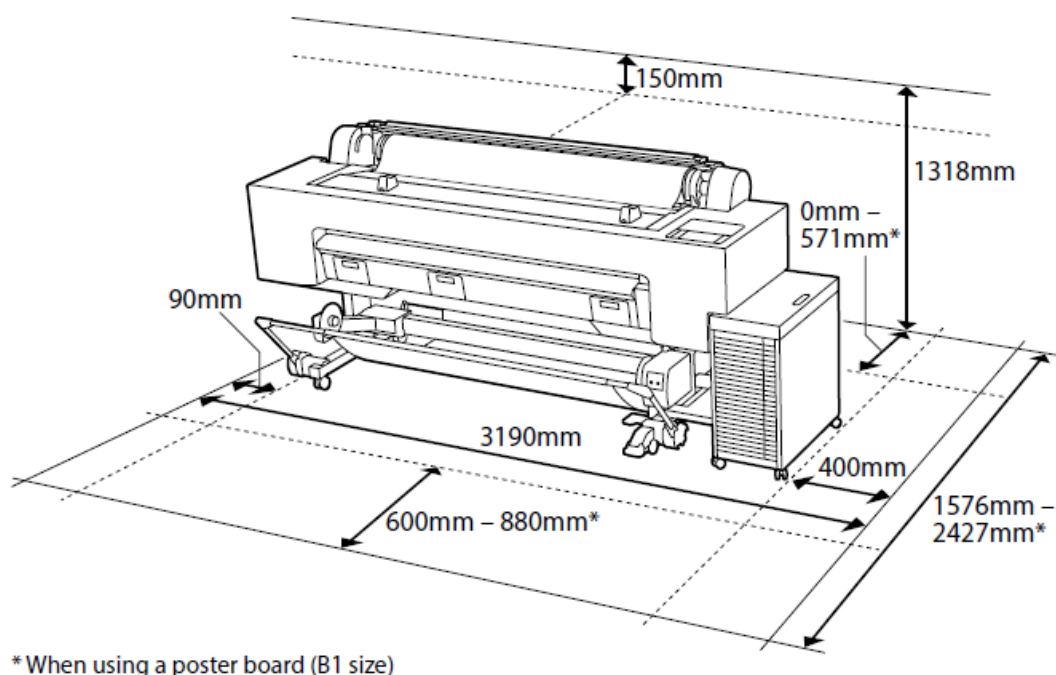
When handling the ink cartridges

- Keep ink cartridges out of the reach of children and do not drink their contents.
- Store ink cartridges in a cool, dark place.
- If ink gets on your skin, wash it off with soap and water. If ink gets in your eyes, flush them immediately with water.
- Do not use an ink cartridge beyond the date printed on the cartridge carton.
- Use up the ink cartridge within a year of installation for best results.
- Do not dismantle the ink cartridges or try to refill them. This could damage the print head.
- Do not touch the ink supply port or its surrounding area and the IC chip on the side of the ink cartridge. Doing so may affect normal operation and printing.

Meaning of Symbols

| | |
|---|---|
|  Warning | Warnings must be followed to avoid serious bodily injury. |
|  Caution | Cautions must be followed to avoid bodily injury. |
|  | Important : Important must be followed to avoid damage to this product. |
|  | Note : Notes contain useful or additional information on the operation of this product. |

Choosing a Place for the Printer

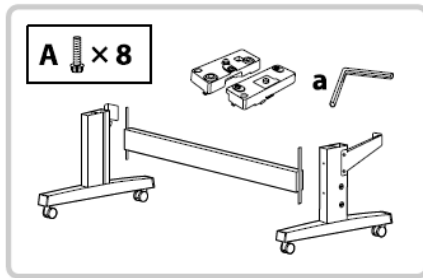


Instructions for Placing the Printer Install the printer in a location as shown below.

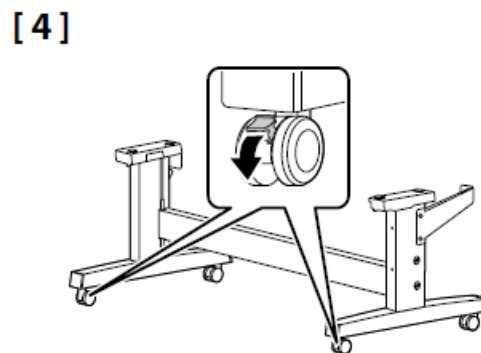
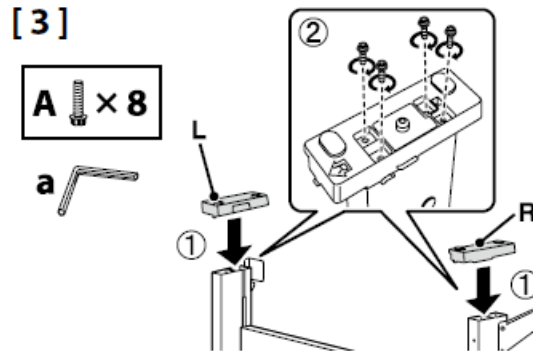
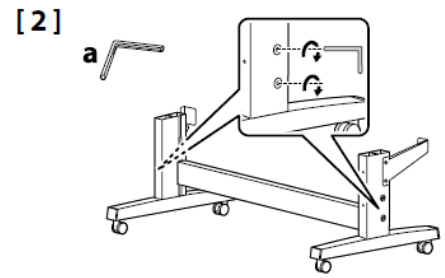
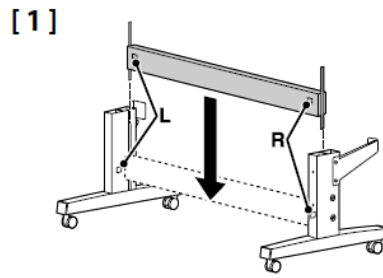
Caution:

Before assembling the printer, clear the work area by putting away the removed packing materials and bundled items.

It is recommended to assemble the stand by a group of three.



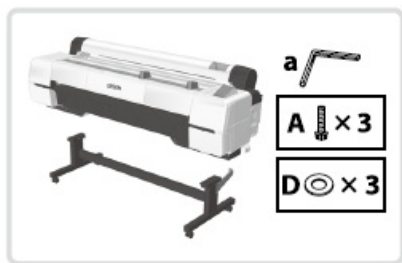
10

**Caution:**

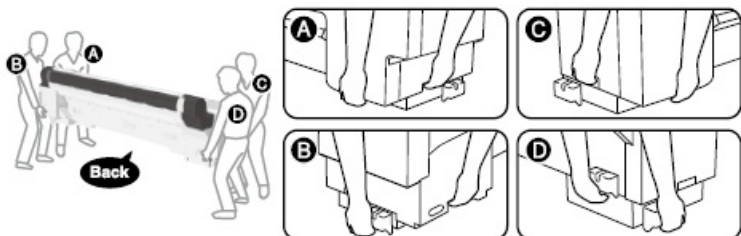
Always secure the casters of the stand except when moving the printer.

Printer Installation**Caution:**

- When carrying the printer, use at least 4 people.
- Before assembling the printer, clear the work area by putting away the removed packing materials and bundled items.
- When lifting the printer, place your hands at the locations indicated in the illustrations.



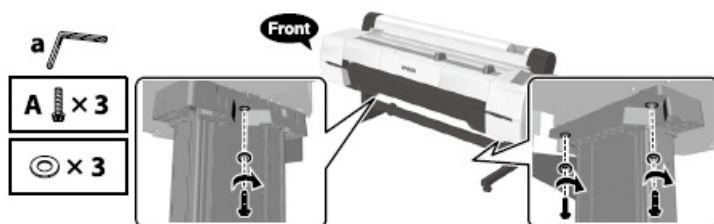
[1]



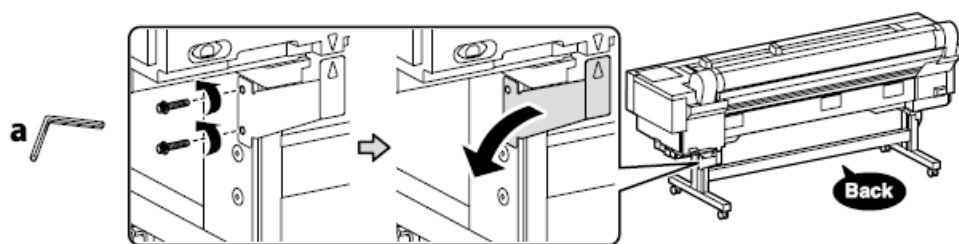
[2]



[3]

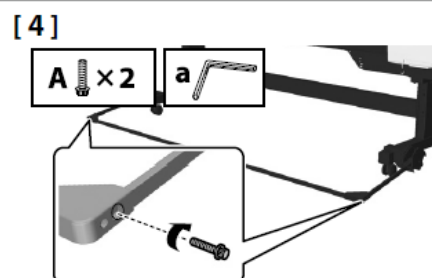
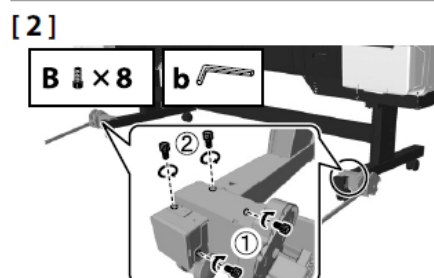
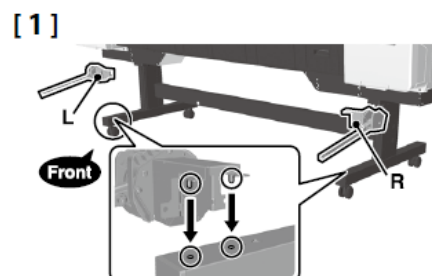
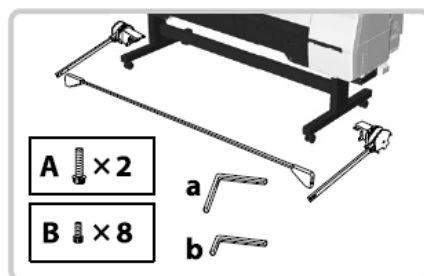


[4]

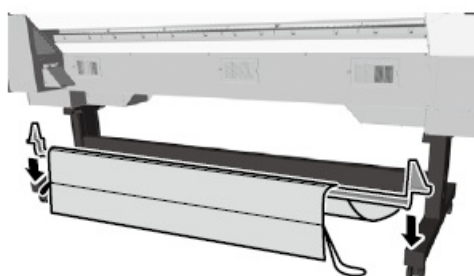
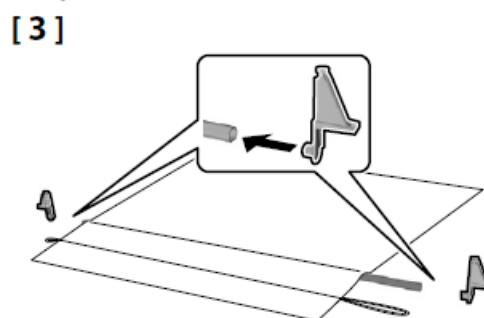
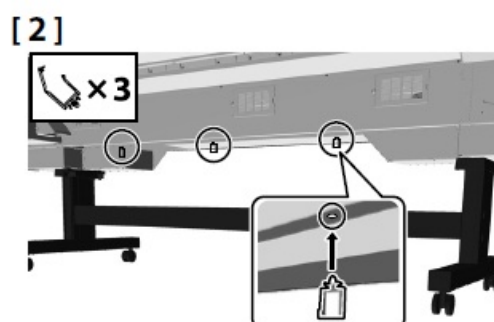
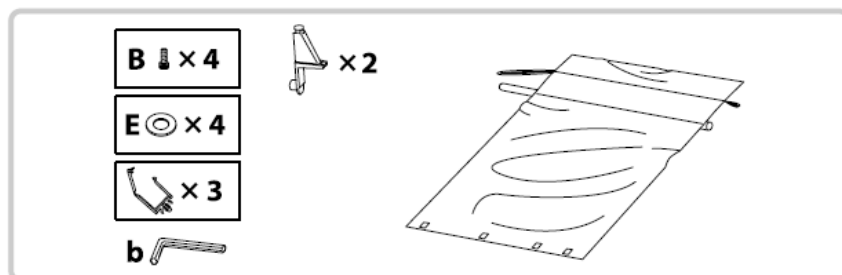


Removed parts will be used when reassembling the printer. Keep them in a safe place.

Support Bar

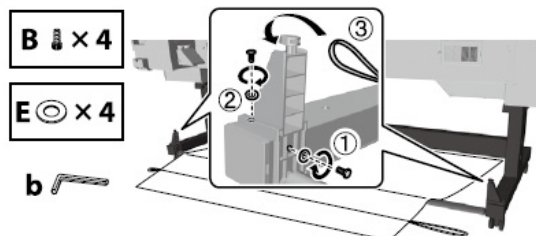


Paper Basket

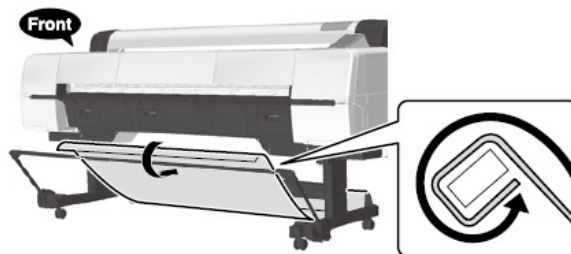


Install the cloth so that the shiny surface faces down and the longer cord is to the right side.

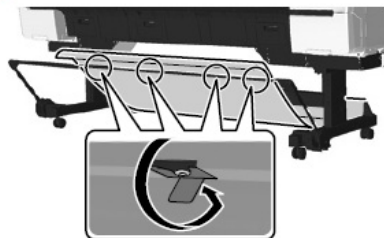
[5]



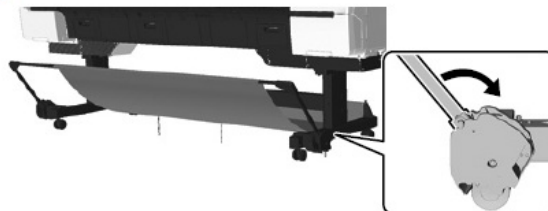
[6]



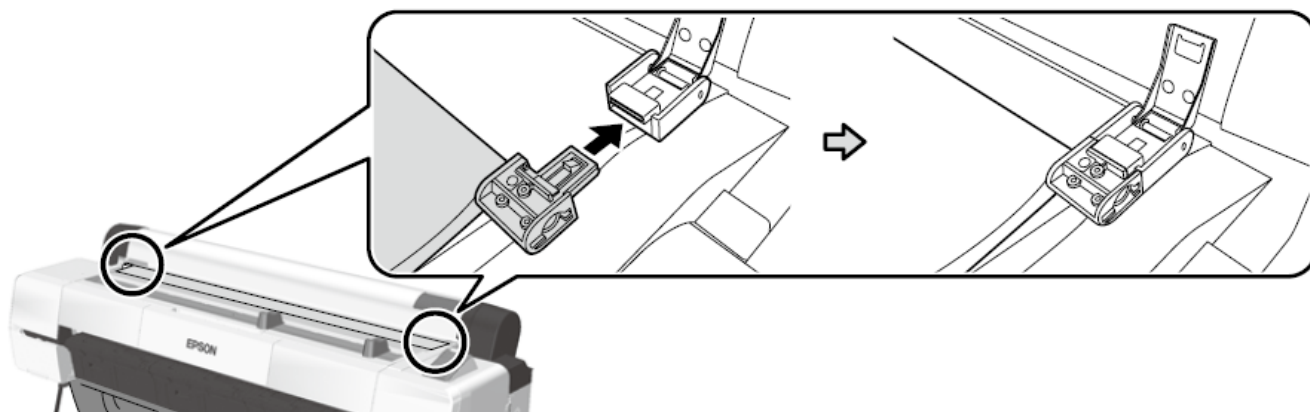
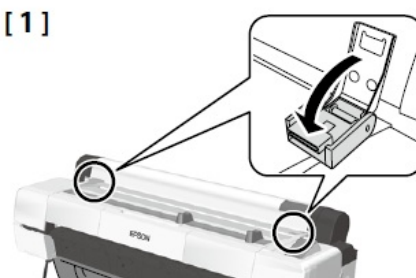
[7]



[8]



[1]

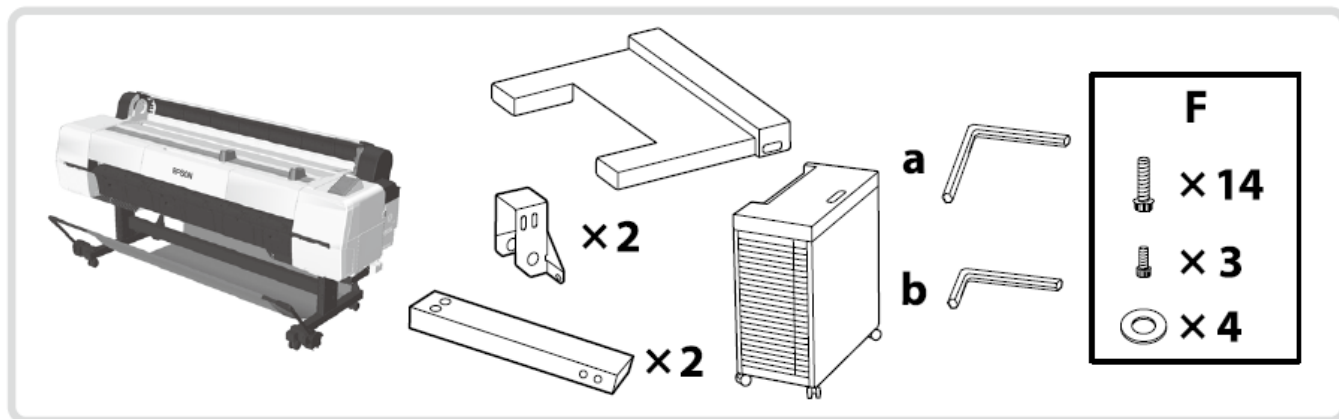


Slide the unit in the direction shown until it clicks.

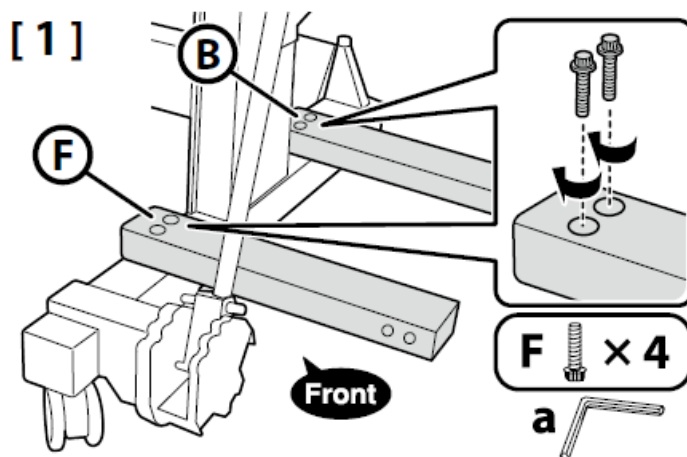
[3]



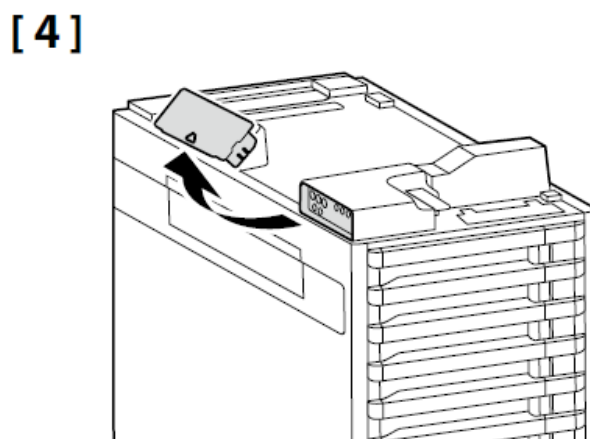
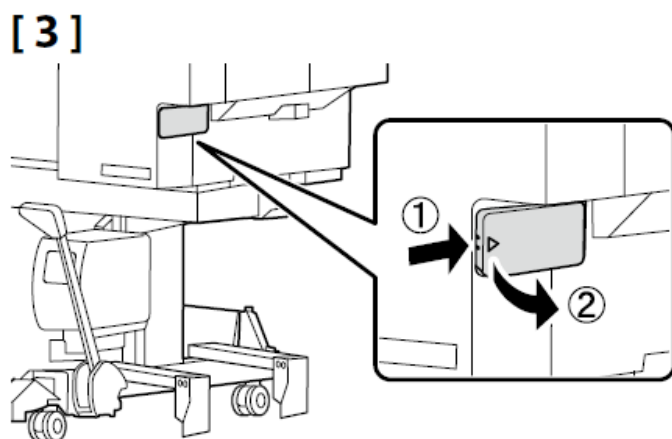
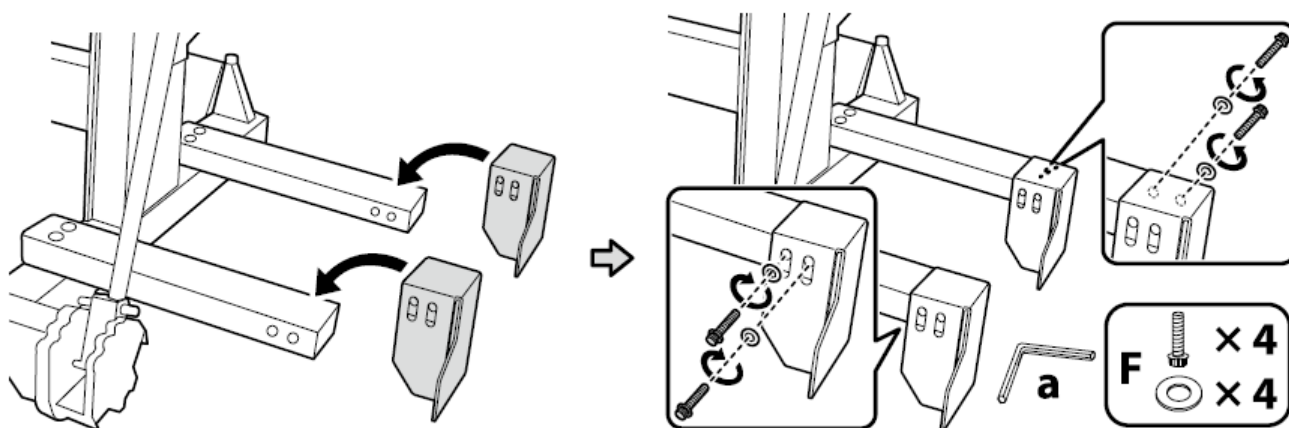
Bulk Ink Solution



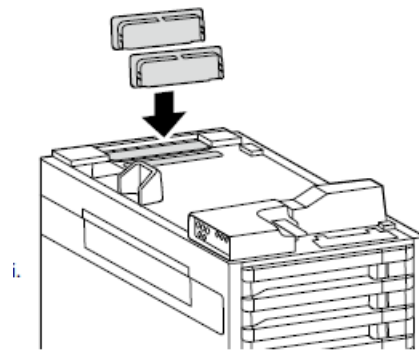
1. When installing a bulk ink solution, secure a flat and stable work area before proceeding.



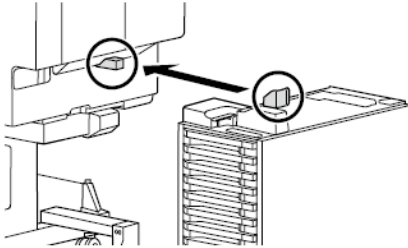
2. Leave the screws temporarily tightened.



The caps removed in Steps 3 and 4 will be used for moving and transporting the printer. Keep both of them in the cap storage area.

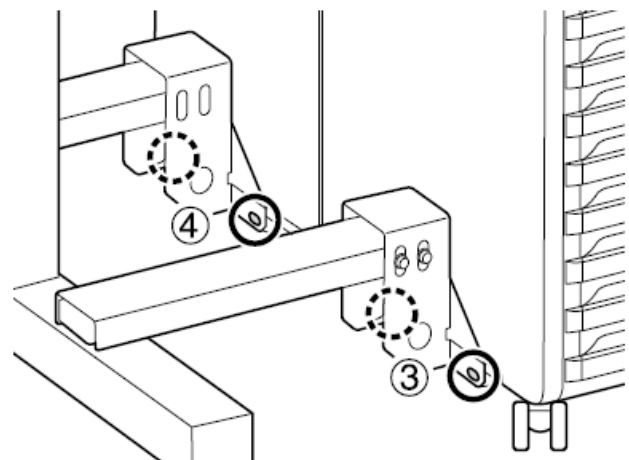
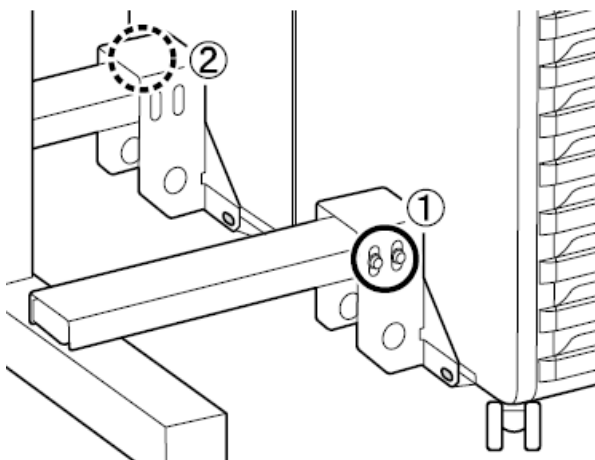
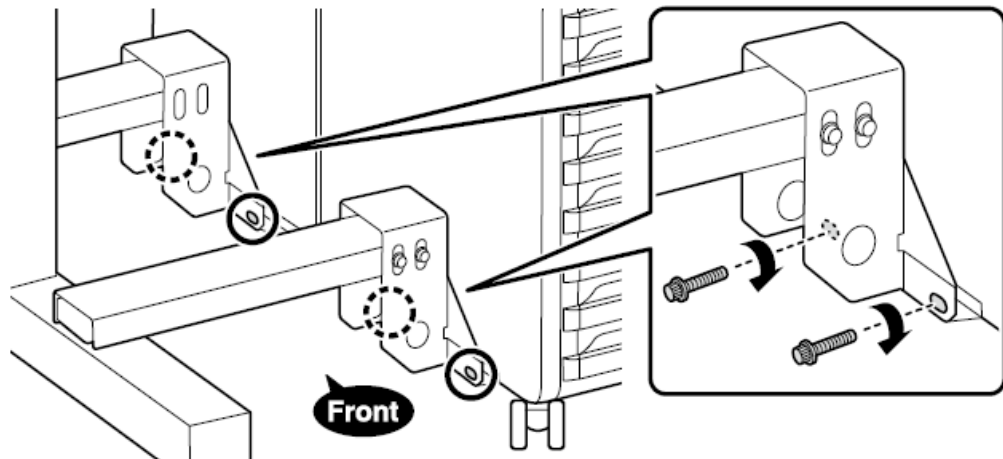
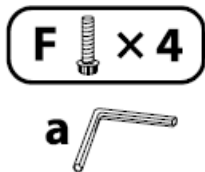
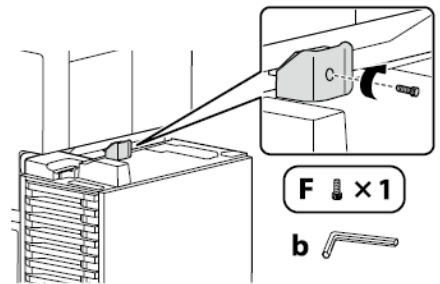


[6]

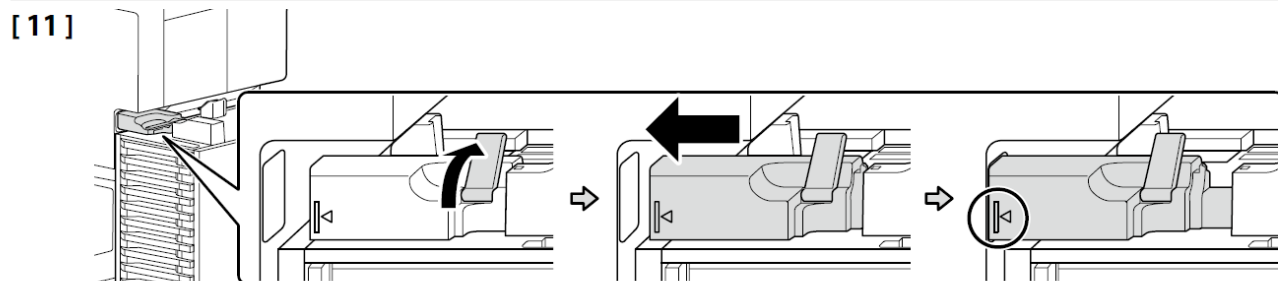
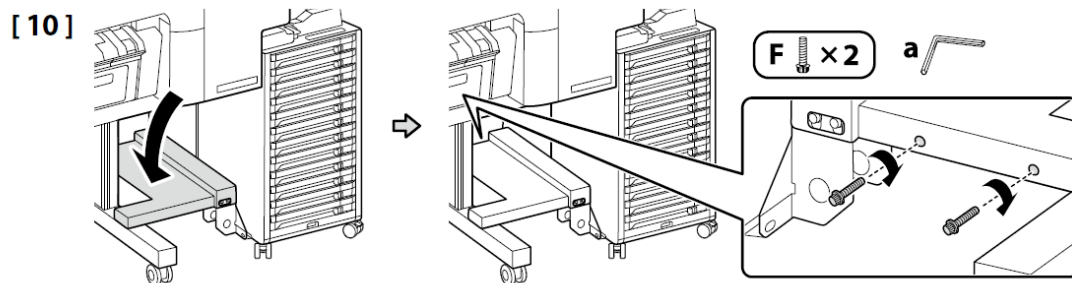


[7]

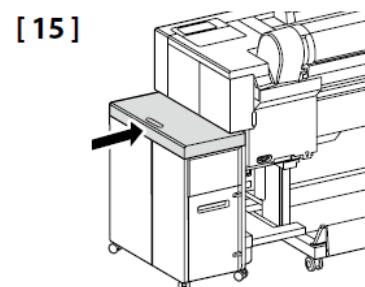
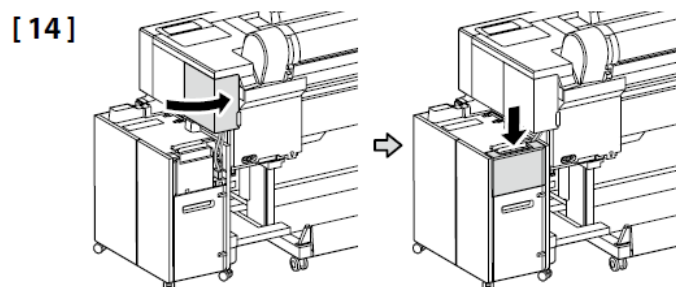
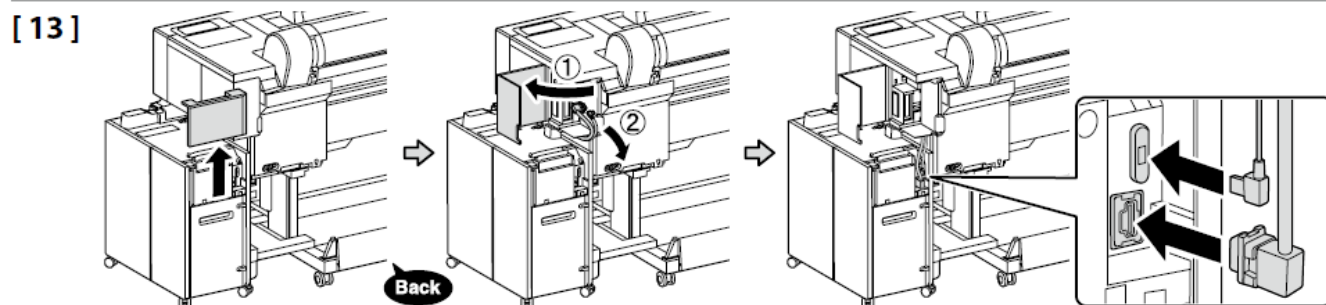
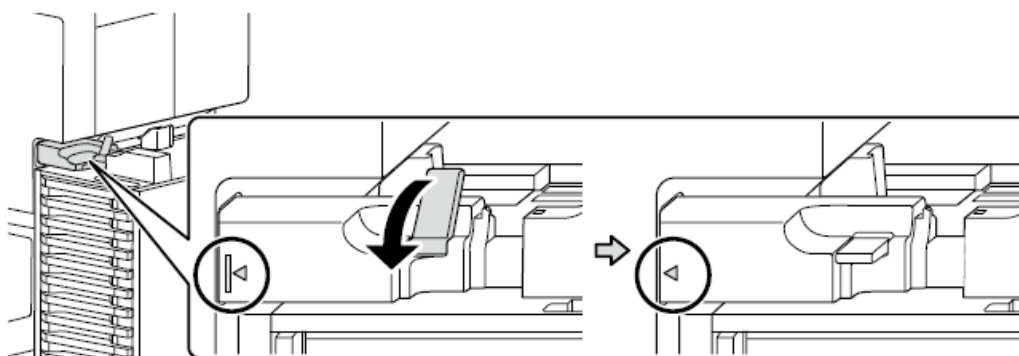
- Use the silver screw.
- Utilisez la vis argentée.
- Verwenden Sie die silberne Schraube.
- ! Gebruik de zilveren schroef.
- Utilizzare la vite argentata.
- Utilice el tornillo plateado.
- Utilize o parafuso prateado.



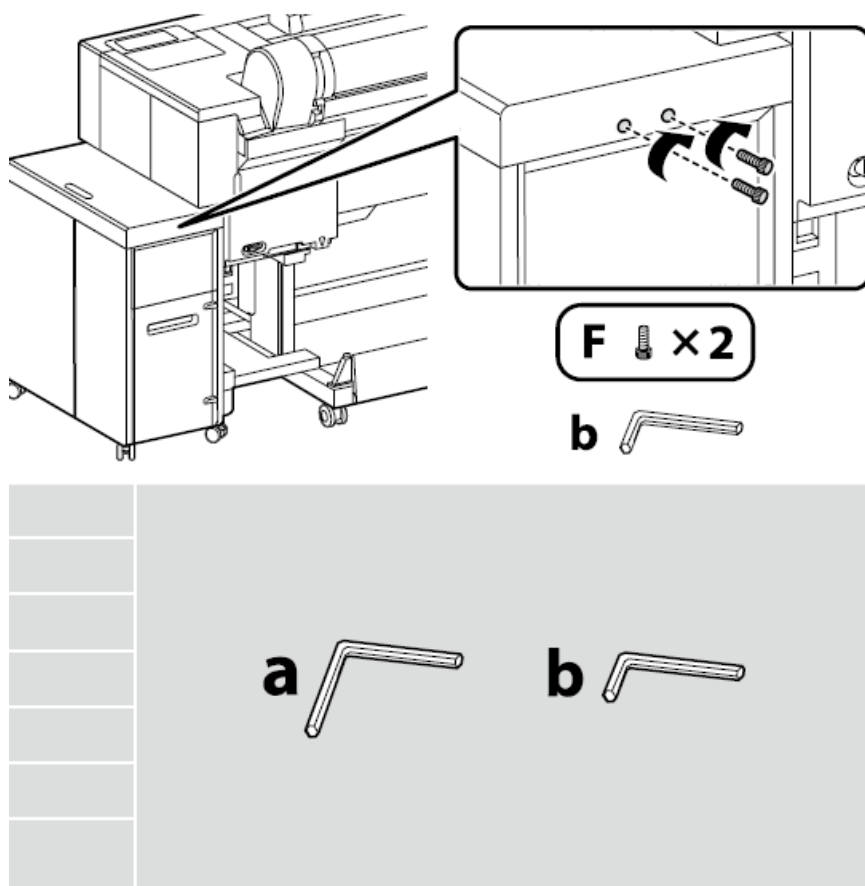
In the following order, firmly tighten the screws that were temporarily tightened in Steps 2 and 8.



Install the ink tube connector horizontally to the connector of the printer body.



Use the silver screw.



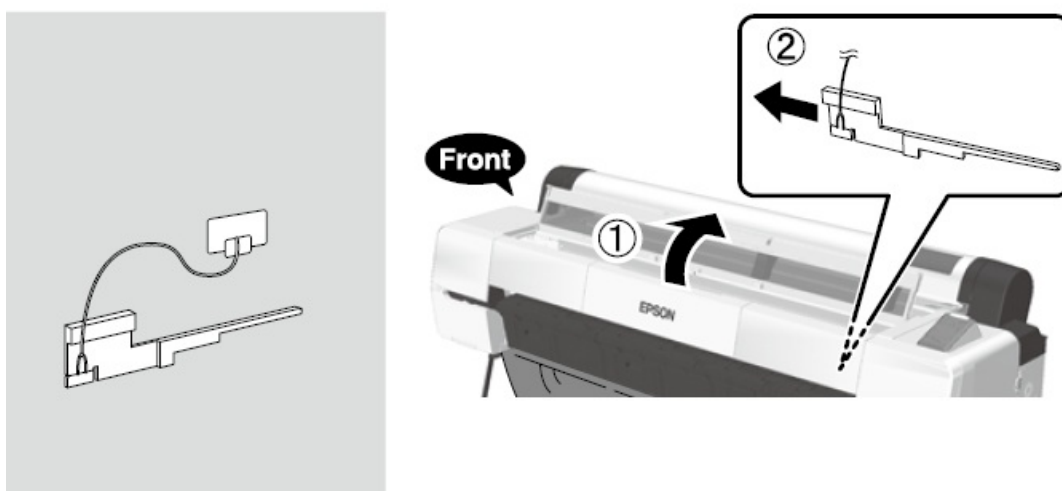
Keep the Allen key in a safe place; do not throw it out.

Removing protective material

Caution:

Be careful not to trap your hands or fingers when opening or closing the printer cover. Failure to observe this precaution could result in injury.

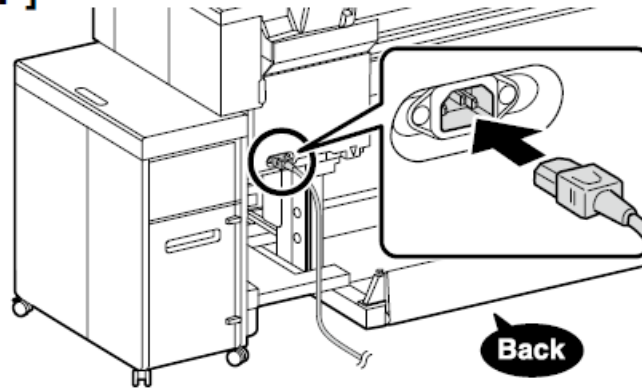
Use the removed protective materials the next time you transport the printer. Make sure you keep them in a safe place.



Initial Settings

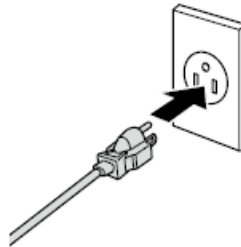
1. Connecting the Power Cable

[1]



2. Warning:

- Use only the type of power source indicated on the printer's label.
- To prevent ground leak accidents, connect to a grounded (earthed) outlet.
- The shape of the plug varies with the region or country of sale. Use the supplied power cable only.



Ink Charging

Turn on the printer and make initial settings such as the language and date.

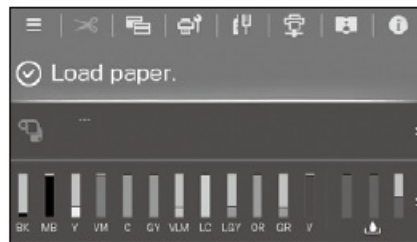
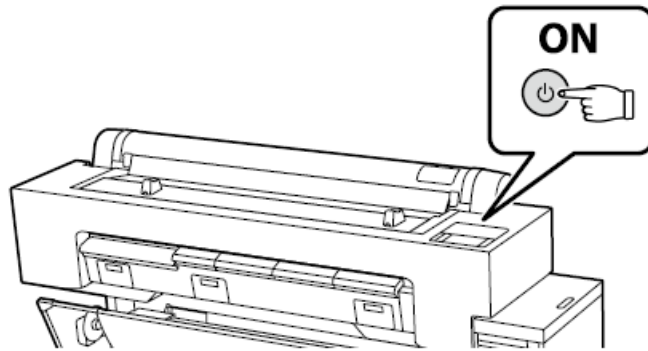
Next, follow the instructions on the control panel's screen to perform initial ink charging.

The maintenance box needs to be replaced twice during the initial ink charging. Follow the instructions on the operation panel display to replace the maintenance box. The removed maintenance box can be used for normal printing.

Initial Settings

Observe the following precautions when charging the ink. If these precautions are not observed, the work may be interrupted and require redoing, resulting in more ink being consumed than normal.

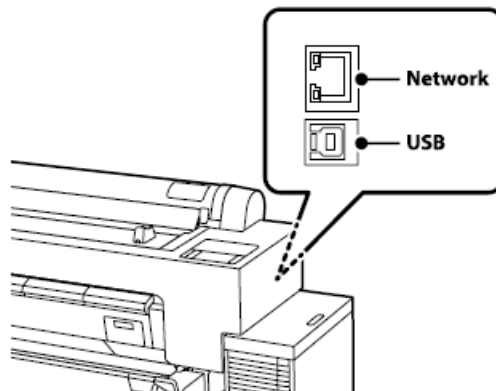
- Do not disconnect the power cable from the outlet or turn off the power.
- Do not perform operations other than those specified on the screen.
- Do not open each cover.




- The operation is complete when the message “Load paper.” appears in the display.

Installing the Software

The computer must be connected to the Internet so that software can be downloaded during the installation. Ready the printer and computer for connection before proceeding, but do not connect the cables until the installer prompts you to do so. The basic software will not be installed if the devices are not connected according to the on-screen instructions.

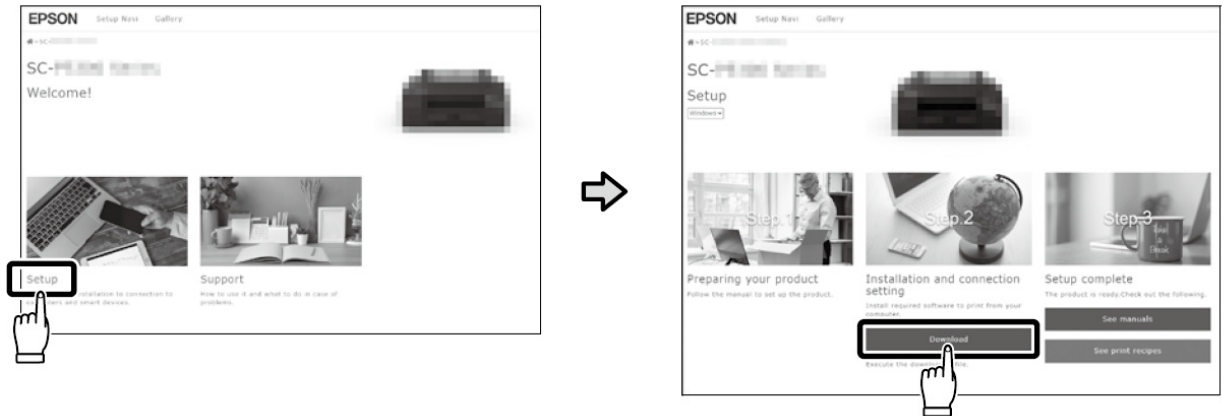


Enter “epson.sn” and the printer model name into a web browser and click  .

[1]



[2]



Run the downloaded installer.

[4]

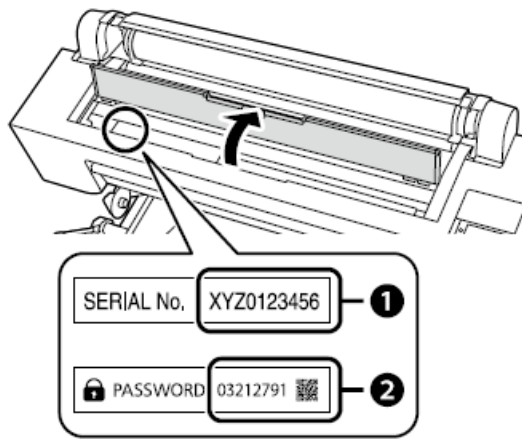


Follow the on-screen instructions to complete the installation.

Installing the Software

When you are prompted to enter the administrator password during software installation, enter the default password. The default administrator password is printed on the label attached to the location shown in the figure.

- If there is only one label, the password will be the serial number printed on the “Serial No.” label (A in the illustration). In the example shown, the password is “XYZ0123456”.
- If there are two labels, the password will be printed on the “PASSWORD” label (B). In the example shown, the password is “03212791”.

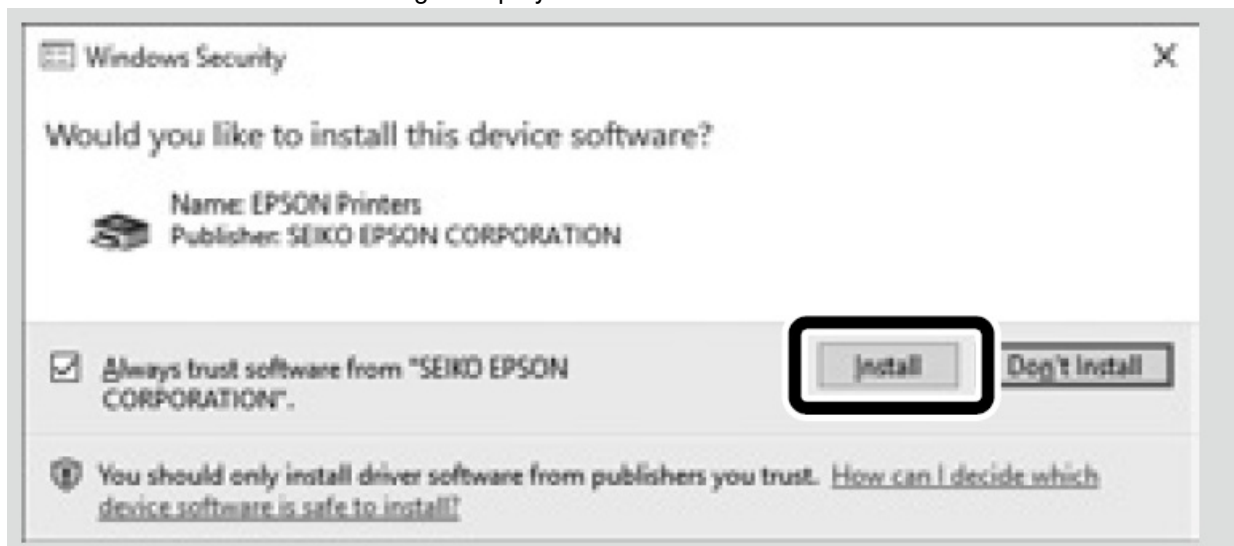


For those using the printer via network connection

For network connections, we recommend changing the initial administrator password from the default setting. Do not forget the administrator password. For information on how to change the administrator password and what to do if you forget the password, see the “Administrator’s Guide” (Online Manual).

Windows

Be sure to click Install if the above dialog is displayed.



Using the Printer

- You can perform tasks such as paper loading and basic maintenance (replacement of consumables) while checking the procedures on the printer’s control panel screen.
- For example, the steps for checking the procedure when loading paper are as shown below.
- The position for loading paper into the printer differs depending on the type and thickness of the paper, as shown below. First, check the appropriate loading position for the paper to be loaded.

Using the Printer

Roll Paper /

Specifications of paper that can be loaded

- Size: 254 to 1,626 mm (10 to 64 inch)

- Paper thickness: 0.08 to 0.5 mm (0.003 to 0.02 inch)

Cut Sheet

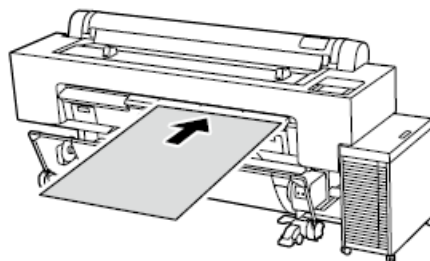
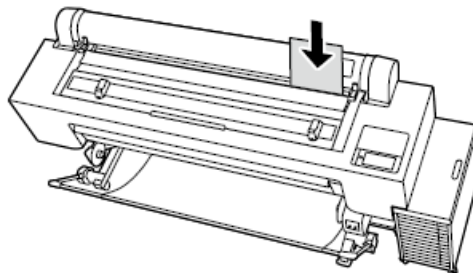
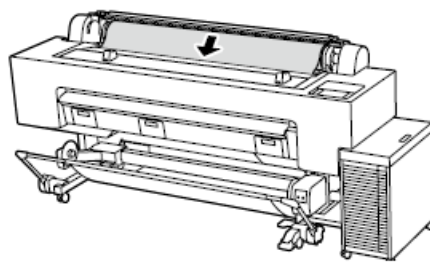
Specifications of paper that can be loaded

- Size: 210 to 1,118 mm (A4 width to 44 inch)
- Paper thickness: 0.08 to 0.8 mm (0.003 to 0.03 inch)
- Load paper one sheet at a time

Poster Board

Specifications of paper that can be loaded

- Size: 210 to 1,118 mm (A4 width to 44 inch)
- Paper thickness: 0.8 to 1.5 mm (0.03 to 0.06 inch)
- Load paper one sheet at a time



Using the Printer

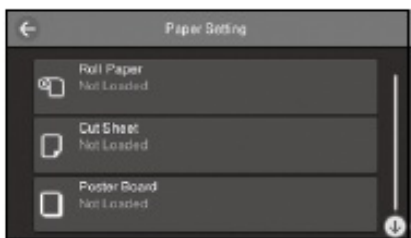
1. Press the paper loading information field.
2. Select the type of paper to be loaded.
3. Example: When Roll Paper is selected

Press How to... to display the setting procedure. After that, you can carry out the task while checking the procedure on the screen

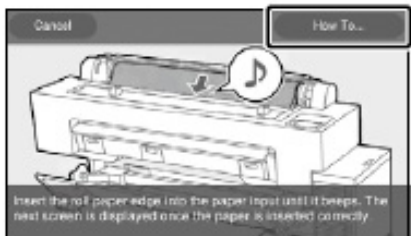
[1]



[2]

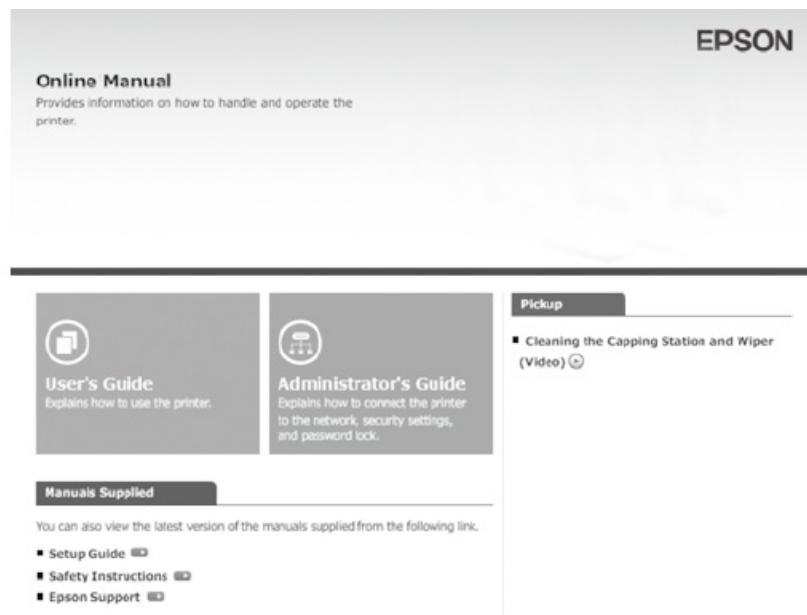


[3]



Viewing Online Manuals

All manuals for this printer can be found on the web page “Online Manual”. In addition to manuals, you can also view other useful information such as a video on “Cleaning the Capping Station and Wiper.” The “Online Manual” page always contains the latest version of the manuals. The illustration is an example.



Viewing Online Manuals

Online manuals can be viewed by following the steps below. Make sure your computer is connected to the Internet when following these steps.

1. Click the Epson Manuals icon created on your computer's desktop. The Epson Manuals icon is created when you install the manuals according to "Installing the Software" on page 30.
2. Select your printer model name.
3. Click Online Manual.

No "Epson Manuals" Icon

Visit the Epson website at epson.sn, and then follow the procedure below to see the online manuals.

1. Enter or select your printer model name.
2. Click Support – Online Manual.

Documents / Resources

| | |
|--|--|
| | <p>EPSON SC-P20500 Series Large Format Printer [pdf] Installation Guide SC-P20500 Series Large Format Printer, SC-P20500 Series, Large Format Printer, Format Printer, Printer</p> |
|--|--|

References

- [User Manual](#)

[Manuals+](#). [Privacy Policy](#)

This website is an independent publication and is neither affiliated with nor endorsed by any of the trademark owners. The "Bluetooth®" word mark and logos are registered trademarks owned by Bluetooth SIG, Inc. The "Wi-Fi®" word mark and logos are registered trademarks owned by the Wi-Fi Alliance. Any use of these marks on this website does not imply any affiliation with or endorsement.