



EPSON SC-F11000H Series Textile Printer User Guide

[Home](#) » [Epson](#) » EPSON SC-F11000H Series Textile Printer User Guide 

Contents

- 1 EPSON SC-F11000H Series Textile Printer
- 2 Introductions
- 3 Important Safety Instructions
- 4 Important Safety Instructions
- 5 Residual Risks on Using Large-capacity Media Feeding Unit
- 6 Tension Bar Precautions
- 7 Transfer and Installation Precautions
- 8 Parallel Adjustment Precautions
- 9 Operating Environment
- 10 Supplied Accessories
- 11 Installing the Software
- 12 Installing the Software
- 13 Windows
- 14 Documents / Resources
 - 14.1 References
- 15 Related Posts



EPSON SC-F11000H Series Textile Printer



Introductions

This manual takes you through the steps involved after installation, from checking the supplied accessories through to actual use. Keep this manual where it can be used to help resolve any questions you may have regarding the product.

When you will use a large-capacity media feeding unit model, also read the “Safety Precautions” included with the media feeding unit.

Meaning of Symbols

The symbols on this manual and Epson product are used in order to ensure safety and proper use of the product and to prevent danger to customers and other persons, and property damage. The symbols indicate the meaning below.

- Warning Warnings must be followed to avoid serious bodily injury.
- Caution Cautions must be followed to avoid bodily injury.
- Important : Important must be followed to avoid damage to this product.
- Note : Notes contain useful or additional information on the operation of this product.

Hot surface		Caution, Warning
Risk of electric shock	Keep hands clear	Prohibition
Do not touch	Disconnection (All power plugs)	Alternating Current
Stand-by	ON (Power)	OFF (Power)
Hand insertion prohibited	Trapping warning	

Important Safety Instructions

This section lists precautions that must be taken to use the product safely and prevent damage to property or injury to operators or others.

Notes on Installing

Warning

Do not obstruct the vents on the product.

If the vents are obstructed, the internal temperature could rise and cause a fire. Do not cover the printer with a cloth or install it in a location with poor ventilation. Make sure you secure sufficient space for the installation as described in the manual.

User's Guide (Online Manual)

Do not setup or use this product in an area where children may come close.

Children may be injured by the equipment.

!Caution

Do not install or store the printer in an unstable location or a location subject to vibrations from other equipment.

The printer could fall or tip over and cause an injury.

Do not install the printer in locations subject to oily smoke and dust, or in locations subject to humidity or where it could easily get wet.

An electric shock or fire could occur.

Do not tilt the product more than 10 degrees forward, back, left, or right while moving it.

Failure to observe this precaution could result in the printer falling over, causing accidents.

Because the product is heavy, it should not be carried by one person.

A minimum of five people are needed to carry the printer. See the following for details on the product's weight.

U *User's Guide* (Online Manual)

When you will move a large-capacity media feeding unit, use two or more people.

Do not attempt to move the printer while the stand levelers are secured.

Failure to observe this precaution could result in the printer falling over, causing accidents. Raise the levelers also when you will move a large-capacity media feeding unit.

When moving the printer while it is on the stand, avoid locations with steps or uneven flooring.

Failure to observe this precaution could result in the printer falling over, causing accidents.

Notes on Handling

!Warning

Do not use the printer in locations with volatile substances such as alcohol or thinner, or near naked flames.

An electric shock or fire could occur.

Do not use the printer if it is giving off smoke or if you notice any abnormal odors or noises. An electric shock or fire could occur. If any abnormalities occur, turn off the power and unplug the power cable immediately, and then contact your dealer or Epson Support.

Never try to repair the printer yourself as this is extremely dangerous.

Do not use the printer in an environment where flammable gas or explosive gas may exist. Do not use sprays that contain flammable gas inside or near the product.

A fire could occur.

Only route the cables as indicated in the manual.

A fire could occur. This could also cause damage to connected devices.

Do not insert or drop any metallic or flammable items into the openings on the printer.

An electric shock or fire could occur.

Do not touch any areas inside the printer except for those indicated in the manual.

An electric shock or burn could occur.

Do not disassemble anything except when indicated to do so in the manual.

If the LCD for the control panel is damaged, be careful of any leaking liquid crystal.

Provide first aid under any of the following conditions.

- If liquid adheres to your skin, immediately wipe it off and then wash the area using large volumes of soapy water.
- If any liquid gets in your eyes, flush them with clean water for at least 15 minutes, and consult a physician immediately.
- If liquid is swallowed, rinse your mouth out with water, swallow large quantities of water and vomit it back up, and consult a physician immediately.

If any foreign objects or liquid such as water enters the printer, stop using it immediately.

An electric shock or fire could occur. Turn off the power and unplug the power cable immediately, and then contact your dealer or Epson Support.

Do not insert your hands in locations upon which warning labels that indicate the prohibition of hand insertion or cautions about pinch points are affixed.

There is a risk that your hands could get caught in moving parts, resulting in injury.

!Caution	
Do not sit on the product or place any heavy objects on the product. The printer could tip over or break and cause an injury.	
When transporting or storing the product, be sure that it is level: do not tilt it at an angle or place it upside down. Ink could leak.	
Be careful not to trap your hands or fingers when opening or closing the front or maintenance cover. Failure to observe this precaution could result in injury.	
When connecting cables or optional accessories, make sure they are installed in the correct direction and that you follow the procedures exactly. A fire or an injury could occur. Install the printer correctly by following the instructions in the manual.	
When moving the product, make sure it is turned off, the power cable is unplugged from the outlet, and all connecting cables have been removed. If cables are damaged, an electric shock or fire could occur.	
See the manual to make sure the media and the roll core for the auto take-up reel unit are secured correctly. Dropping media or take-up rolls could result in injury.	
Follow the instructions in the manual when removing media or take-up roll. Dropping media or take-up rolls could result in injury.	
Be sure that your hands or hair do not get caught in the media feeding unit or auto take-up reel unit while it is operating. Failure to observe this precaution could result in injury.	
See that the stand levelers are secured at all times except when moving the printer. If they are not secured, an accident could occur.	
	The dryer may become hot, requiring that care be observed during operation. Failure to observe the necessary precautions could result in burns.
	Do not reach inside the dryer. Failure to observe the necessary precautions could result in burns.

Important Safety Instructions

Notes on the Power Supply

!Warning

Make sure the blades on the plug are inserted completely into the power outlet.

An electric shock or fire could occur.

Unplug the plug regularly and clean between the blades and around the base of the blades.

If the plug is plugged in for an extended period of time, dust collects around the base of the blades and a short circuit or fire could occur.

When unplugging the plug, grip the plug itself; do not pull the power cable.

If the cable is damaged or the plug is deformed, an electric shock or fire could occur.

Do not insert or unplug the plug with wet hands.

An electric shock could occur.

To prevent ground leak accidents, connect to a grounded (earthed) outlet.

Connecting to anything other than a grounded outlet could result in electric shock or fire.

If there is a fence, ladder, or other conductive item within 2.5 m of the large-capacity media feeding unit, ground the conductive item.

Use only the type of power source indicated on the printer's label.

An electric shock or fire could occur.

Do not use the plug if any foreign objects such as dust have adhered to the plug.

An electric shock or fire could occur.

Do not use any other power cables except for the cable supplied with the printer. Also, do not use the power cable supplied with the printer for any other devices.

An electric shock or fire could occur.

Do not use the power cable if it is damaged.

An electric shock or fire could occur. If the power cable is damaged, contact Epson Support. Note the following points to avoid damaging the power cable.

- ☐ Do not modify the power cable.
- ☐ Do not place anything heavy on the power cable.
- ☐ Do not bend, twist, or pull forcefully on the power cable.
- ☐ Do not route the power cable near heaters.

Do not connect the power cable to a power strip or multi plug.

An electric shock or fire could occur. Connect the power cable directly to an outlet for domestic use.

The product is equipped with a dangerous power supply, so pay attention to handling during product problems.

An electric shock or fire could occur.



When problems occur, or when moving the printer, or installing optional accessories, unplug all power cables to completely turn off the power.

An electric shock or fire could occur.

Caution

- If you are not going to use the printer for an extended period, unplug the printer for safety reasons.
- Notes on Consumables (Ink, Media, and so on) and Waste Ink
- Read the “Safety data sheet” before handling ink*, cleaning liquid, or waste ink. You can download it at your local Epson Web site.
- The asterisk (*) indicates consumable items (sold separately)

!Caution
<p>During maintenance, wear protective clothing, including protective eyewear, gloves, and a mask.</p> <p>Take the following actions immediately should ink, waste ink, or cleaning liquid contact your skin or enter your eyes or mouth:</p> <ul style="list-style-type: none"> • If fluid adheres to your skin, immediately wash it off using large volumes of soapy water. Consult a physician if the skin appears irritated or is discolored. • If fluid enters your eyes, rinse immediately with water. Failure to observe this precaution could result in blood shot eyes or mild inflammation. If problems persist, consult with a physician. • If fluid enters your mouth, consult a physician immediately. • If fluid is swallowed, do not force the person to vomit, and consult with a physician immediately. • If the person is forced to vomit, fluid may get caught in the trachea which can be dangerous.
Store ink cartridges, cleaning liquid, and waste ink in a location out of reach of children.
When cutting media, be careful not to cut your fingers or hands with the cutter or other blades.
<p>Do not shake ink cartridges too forcefully.</p> <p>Shaking cartridges too forcefully could cause them to leak ink.</p>
<p>Do not rub your hands along the edges of the media.</p> <p>The edges of the media are sharp and can cause injury.</p>
<p>Because the media is heavy, it should not be carried by one person.</p> <p>We recommend using the lifter for media that is heavier than 40 Kg.</p>
<p>Do not disassemble ink cartridges.</p> <p>Ink leaking from disassembled cartridges could enter your eyes or adhere to your skin.</p>

Other Notes

Be sure your power cable meets relevant safety standards of the area where you plan to use it.

Residual Risks on Using Large-capacity Media Feeding Unit

Notes on Spindles and Media

!Caution
<p>Spindles are heavy and require two or more people for handling.</p> <p>Failure to observe this precaution could result in injury, such as from a drop.</p>
<p>Using a lifter is recommended when handling media, such as during loading.</p> <p>If a lifter is not used, media may fall and cause an injury.</p>
<p>When you carry a media roll on a spindle, use compressed air to firmly secure the spindle.</p> <p>Otherwise, the media roll or spindle may drop and injure your foot.</p> <p>For example, when a media roll on a spindle has been left for a long time, use compressed air to re-secure the spindle as necessary.</p>
<p>When you will place a spindle or a media roll with a spindle attached on the jumbo roll unit, do not put your hands on the handle.</p> <p>Failure to observe this precaution could result in a finger-pinching injury.</p>
<p>Do not touch a rotating spindle or media during operation.</p> <p>There is a risk that your hands, hair, or other body parts could get caught, resulting in injury. Furthermore, in the unlikely event that a spindle operates abnormally, an injury may result. If there is a problem with operation, immediately cut the power, unplug the power plug from the outlet, and then consult your place of purchase or Epson's repair center.</p> <p>You can immediately stop operation and cut the power during an emergency by pressing the emergency stop button.</p>

Tension Bar Precautions

!Caution
<p>Follow the manual instructions when loading and removing media.</p> <p>If the manual instructions are not followed, the tension bar may operate unexpectedly and cause an injury.</p>
<p>Do not touch the tension bar when the tension bar will be operated or when the tension bar is moving.</p> <p>Otherwise, your hand, hair, or other body part may be caught, or your hand, head, or other body part may be hit by the tension bar, resulting in an injury.</p> <p>Furthermore, in the unlikely event that a tension bar operates abnormally, an injury may result. If there is a problem with operation, immediately cut the power, unplug the power plug from the outlet, and then consult your place of purchase or Epson's repair center.</p> <p>You can immediately stop operation and cut the power during an emergency by pressing the emergency stop button.</p>

Transfer and Installation Precautions

Caution

- When you move the jumbo roll unit over a route with a difference in level, make sure the unit is not stopped by the difference in level.
- If there is a collision with the difference in level, and the casters are damaged, the jumbo roll unit] may turn over, resulting in an injury.
- Route the power cable so that it is not tripped on.
- If the power cable is tripped on during operation, the Unit may turn over, resulting in an injury.

Parallel Adjustment Precautions

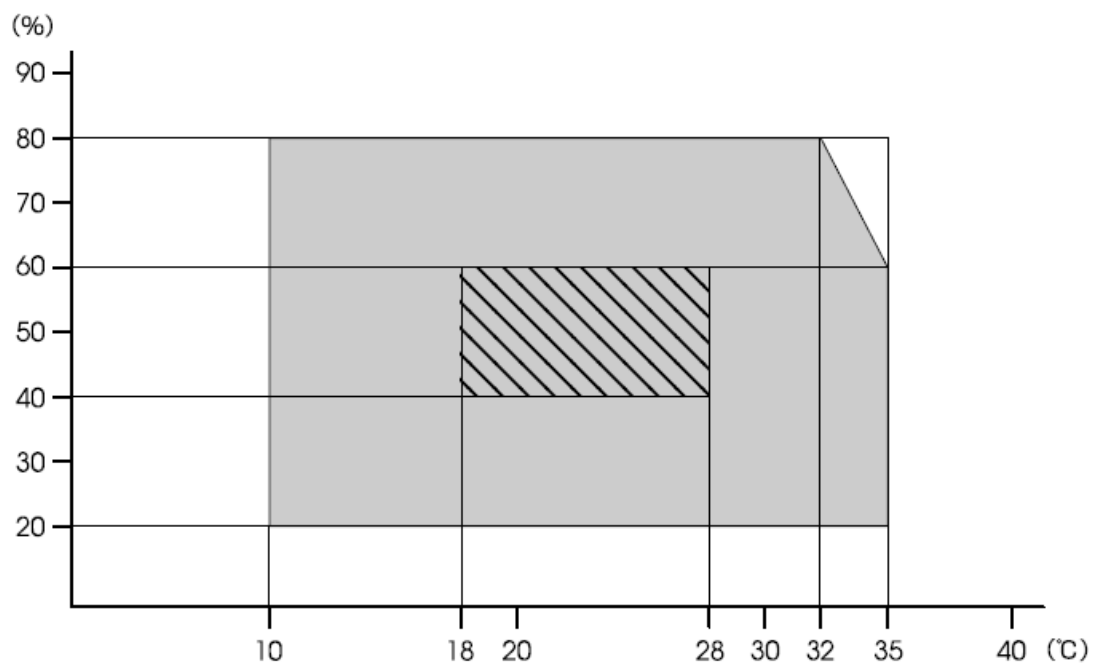
Caution

Always cut the power before parallel adjustments.



Failure to cut the power could result in an unexpected operation and injury.

Operating Environment

Temperature and humidity range



- The product should be operated only in environments that meet the following conditions:

	Temperature	Humidity (without condensation)
 Printing (Recommended)	18–28 °C	40–60%
 Printing	10–35 °C	20–80%

Even the conditions above are met, you may not print properly if the environmental conditions are not proper for the paper. See the instructions of the paper for more detailed information.

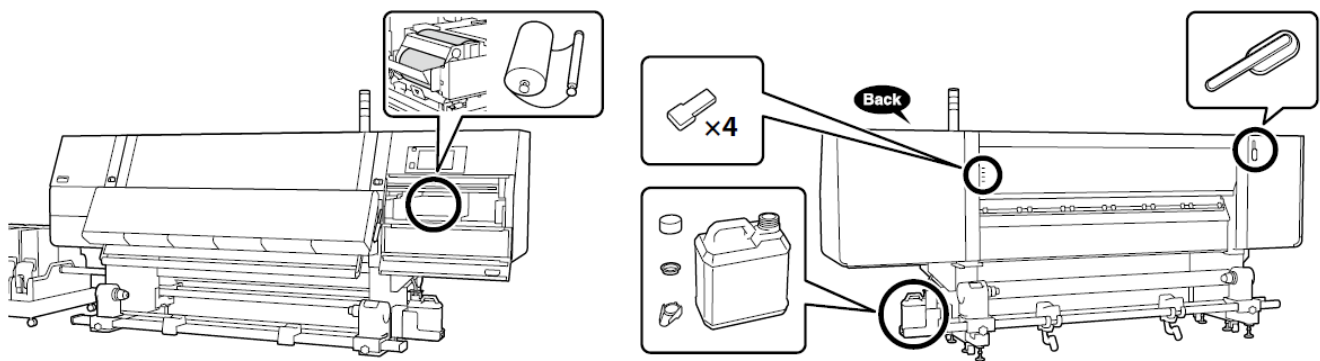
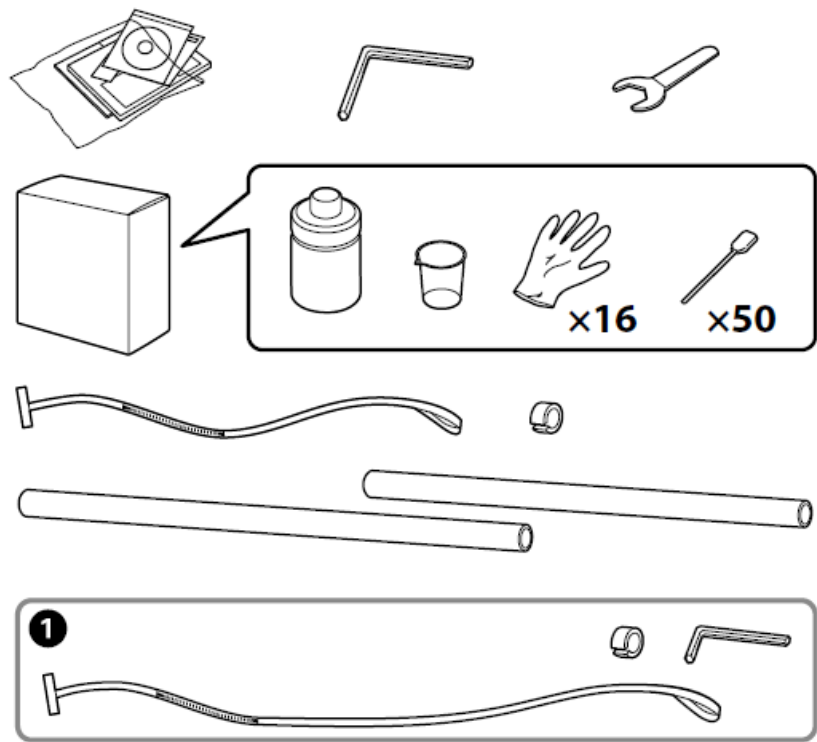
- To maintain humidity at the desired levels, keep the printer out of direct sunlight and away from heat sources and air currents such as those produced by air conditioners.

- The printer is a precision device and should be installed where there is little dust. Do not install in areas used for such activities as cloth-cutting or sewing.

Supplied Accessories

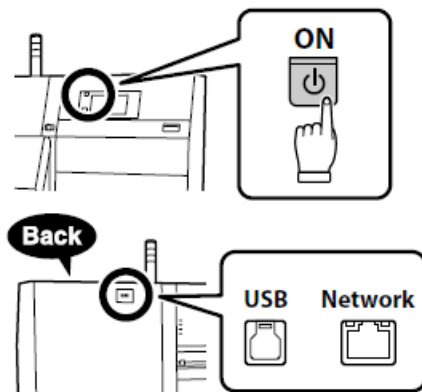
For information on usage and details, see the User's Guide (Online Manual).
The diagram shows a standard media feeding unit model.

1. A is only supplied with large-capacity media feeding unit model.



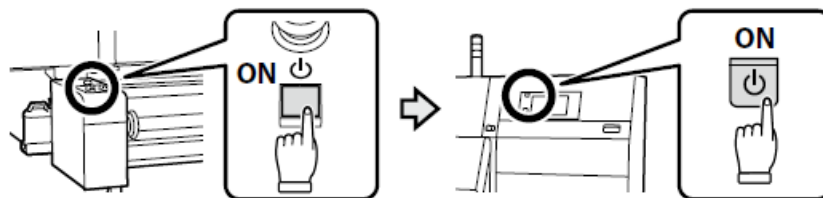
Installing the Software

Installing the Essential Software



Ready the printer and computer for connection before proceeding, but do not connect the cables until the installer prompts you to do so. The essential software will not be installed if the devices are not connected according to the on-screen instructions.

When you will use a large-capacity media feeding unit model, turn on the power of the media feeding unit, and then turn on the main power supply.



Installing the Software

The installation procedure varies with the type of computer used.

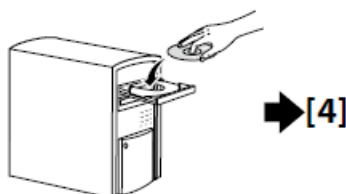
Windows (No Disk Drive)/Mac

Use Epson Setup Navi (<https://epson.sn/>)

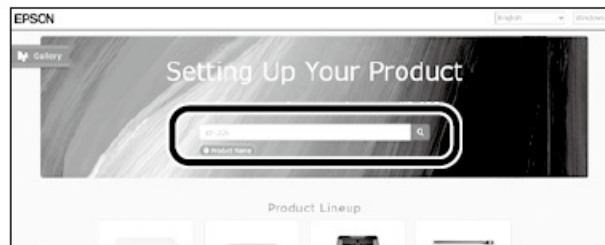


Windows (CD/DVD Drive)

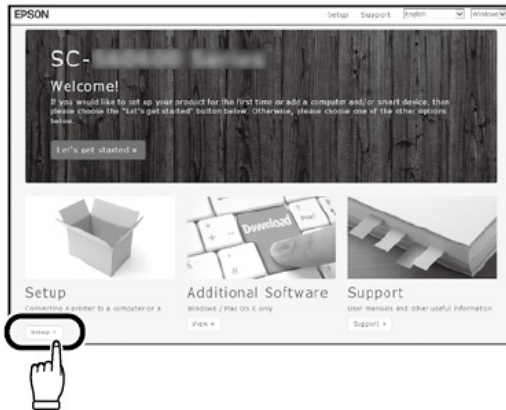
Use the supplied software disk.



1. Enter “epson.sn” and the printer model name into a web browser and click 



[2]



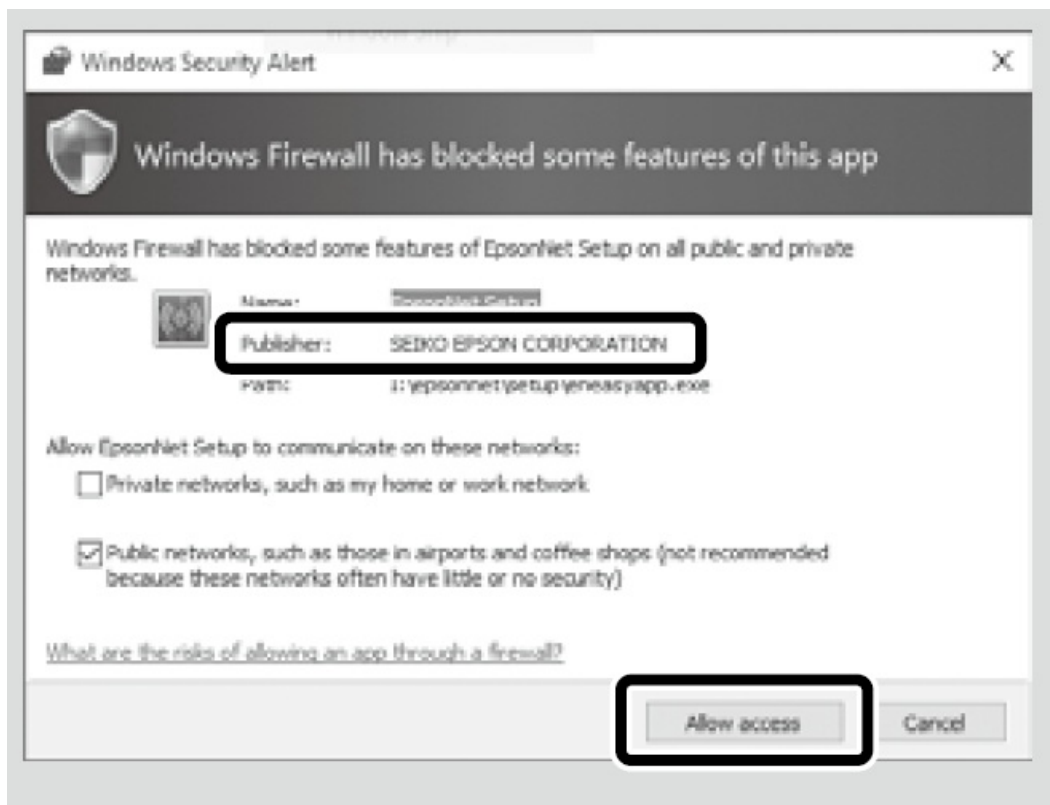
Windows/Mac

Follow the on-screen instructions to complete the installation.

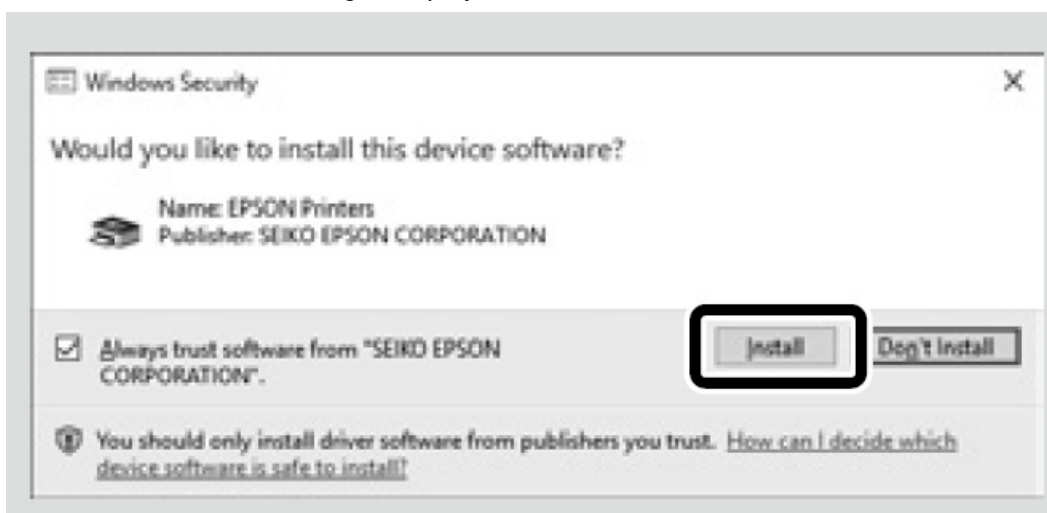


Windows

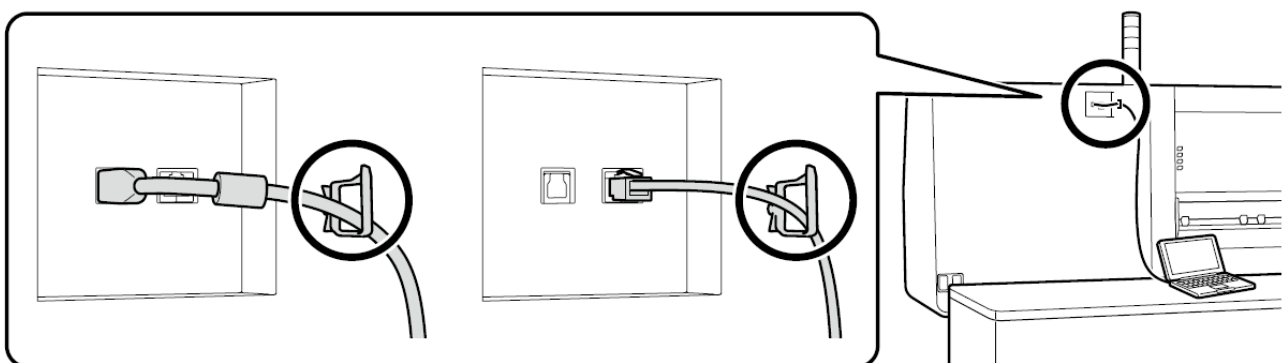
- If this dialog box appears, make sure the publisher is "SEIKO EPSON CORPORATION", and then click Allow access.



- Be sure to click Install if the above dialog is displayed.



- Be sure to pass the cable through the clamp when connecting it to the printer.



- Next, install the RIP. Instructions for installing Epson Edge Print can be found in the next section; for information on installing a commercially RIP, see the RIP manual.

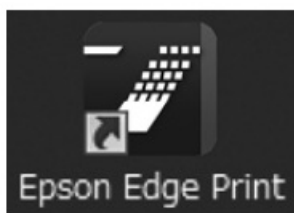
Installing Epson Edge Print

Install Epson Edge Print to the computer to which you installed the essential software. The software needed to install Epson Edge Print is available online; be sure the computer is connected to the Internet and then access the URL printed on the sheet in the Epson Edge Print package.

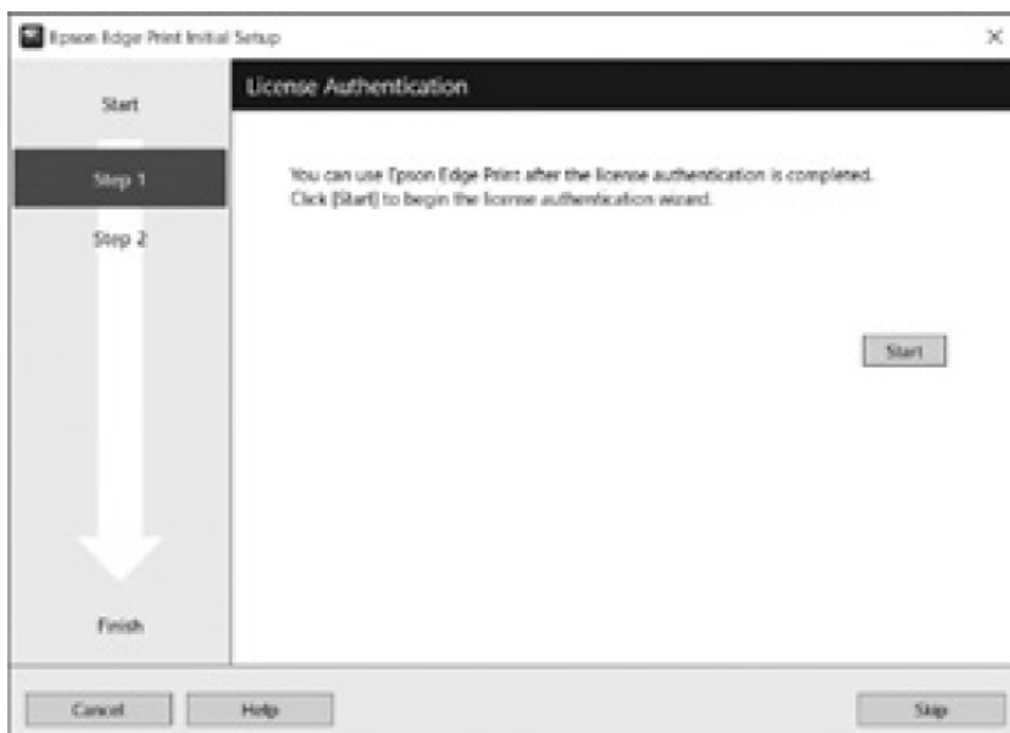
How to Start Epson Edge Print

Launch Epson Edge Print using either of the following two methods:

- Double-click the shortcut icon on the desktop.
- Click the Windows start button and select All apps > Epson Software > Epson Edge Print.



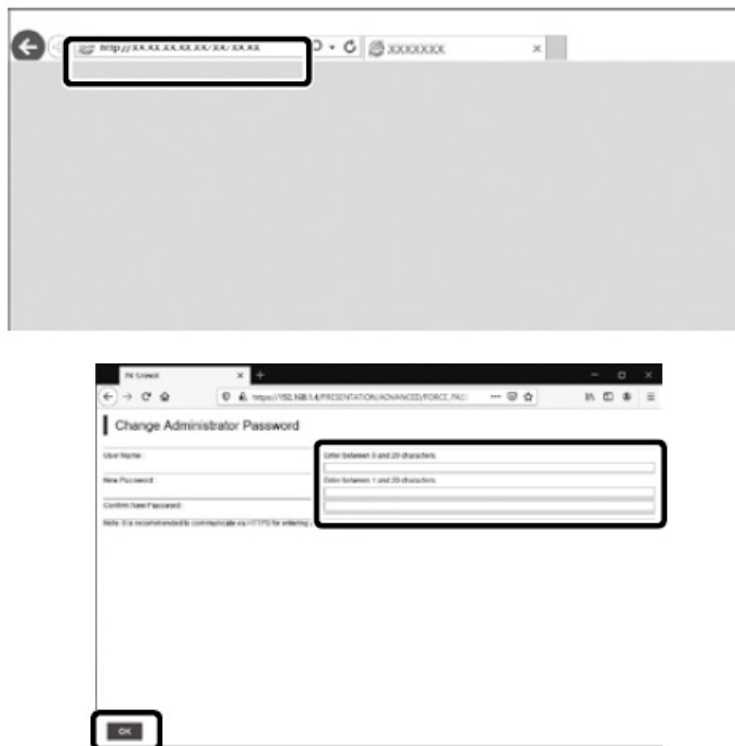
The first time you use Epson Edge Print, you will be prompted to accept the license agreement. See Epson Edge Print help for more information.



Setting a Password (Networks Only)

In a network connection, continue by setting a password for protecting the network settings. Do not forget the administrator password. For information on what to do if you forget the password, see "Problem Solver" in the User's Guide (Online Manual).

1. Open your Web browser, and enter the IP address of the printer in the address bar.
2. Set your desired password and then close the Web browser.



Using the Printer

Next, load media and start using the printer. For information on loading media, see the User's Guide (Excerpt) (pdf) or view the video accessible by scanning the following matrix barcode.



For details on operating and performing maintenance for the printer, as well as solutions to frequently asked questions, see the online manuals.

You can open the online manuals by clicking the Epson Manuals icon created on your computer's desktop. The Epson Manuals icon is created when manuals are installed using "Installing the Software" in the previous section.

No "Epson Manuals" Icon

If there is no Epson Manuals icon on the desktop, visit Epson Setup Navi (<https://epson.sn/>) and follow the steps below to view the manuals online.

1. Enter or select the printer model.

2. Click Support > Online Manual.



Documents / Resources

	<p>EPSON SC-F11000H Series Textile Printer [pdf] User Guide SC-F11000H Series, SC-F11000 Series, SC-F11000H Series Textile Printer, SC-F11000H Series, Textile Printer, Printer</p>
--	---

References

- [User Manual](#)

[Manuals+](#), [Privacy Policy](#)

This website is an independent publication and is neither affiliated with nor endorsed by any of the trademark owners. The "Bluetooth®" word mark and logos are registered trademarks owned by Bluetooth SIG, Inc. The "Wi-Fi®" word mark and logos are registered trademarks owned by the Wi-Fi Alliance. Any use of these marks on this website does not imply any affiliation with or endorsement.