



# EPSON L5290 L Series All-in-One Printer User Guide

[Home](#) » [Epson](#) » EPSON L5290 L Series All-in-One Printer User Guide 

## Contents

- 1 EPSON L5290 L Series All-in-One Printer
- 2 Start Here
- 3 Unpack
- 4 Choose a setup method
- 5 Fill ink tanks
- 6 Load paper
- 7 Connect the fax line
- 8 Install software
- 9 Mobile and voice-activated printing
- 10 Any problems?
- 11 Any questions?
  - 11.1 Technical support
- 12 Need paper and ink?
- 13 Documents / Resources
  - 13.1 References
- 14 Related Posts

# EPSON

**EPSON L5290 L Series All-in-One Printer**



## Start Here

**IMPORTANT:** Before using this product, make sure you read these instructions and the safety instructions in the online User's Guide.

**Important Safety Instructions:** When using telephone equipment, you should always follow basic safety precautions to reduce the risk of fire, electric shock, and personal injury, including the following:

- Do not use the Epson® product near water.
- Always keep this guide handy.
- Avoid using a telephone during an electrical storm. There may be a remote risk of electric shock from lightning.
- Do not use a telephone to report a gas leak in the vicinity of the leak.

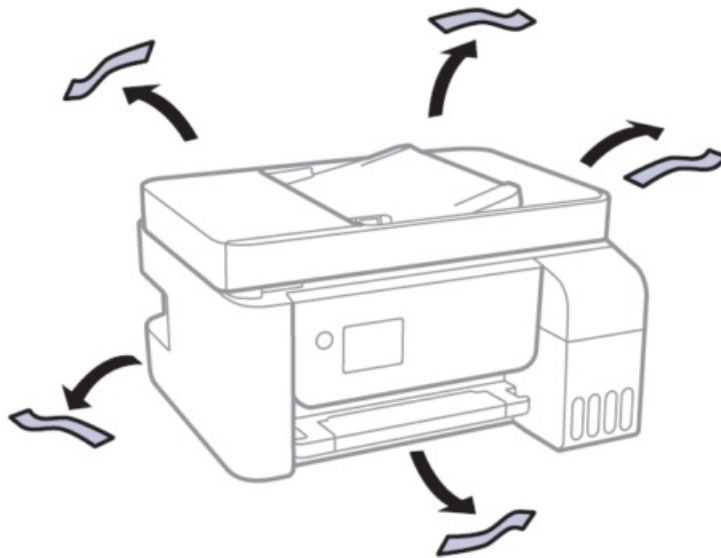
**Caution:** To reduce the risk of fire, use only a No. 26 AWG or larger telecommunication line cord.

## Unpack

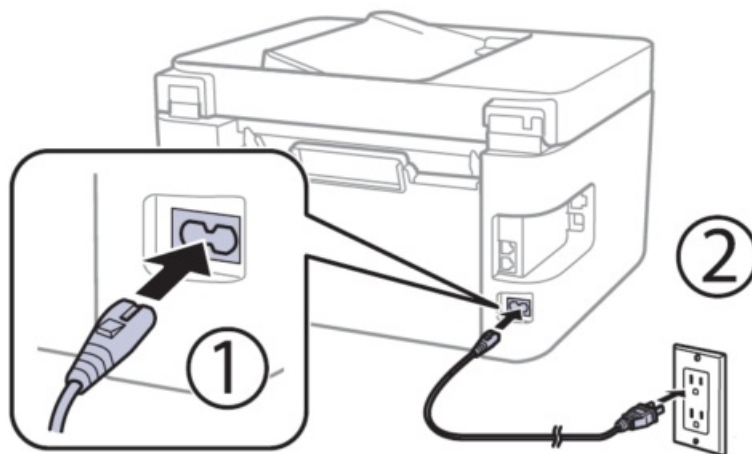


**Note:** Do not open the ink bottles until you are ready to fill the ink tanks. The ink bottles are vacuum packed to maintain reliability.

1. Remove all protective materials from the product.



2. Connect the power cord to the back of the product and to an electrical outlet.



**Caution:** Do not connect to your computer yet.

### Choose a setup method

The Epson Smart Panel® app can help you set up your printer through an interactive, step-by-step process using your smartphone or tablet.



or

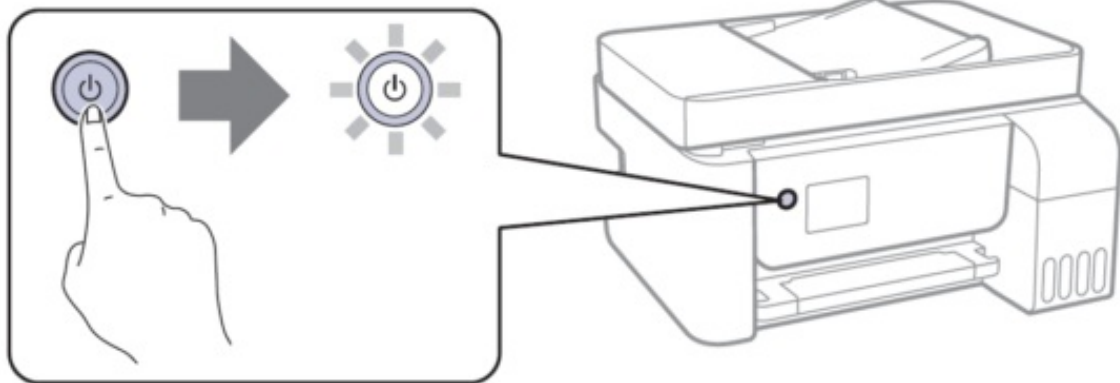


- To use your mobile device for setup, continue to step 1.
- If you do not want to use a mobile device for setup, skip to the “Fill ink tanks” section below.

1. Download the Epson Smart Panel app from your device’s app store. Do not launch the app yet.



2. Press the **power** button to turn on the product.



**Note:** Do not connect your product to your computer yet.

3. Launch the app and follow its instructions to set up your product. For information on setting up the fax, connecting your product to a computer, using voice-activated printing, or solving problems, or for details on reaching Epson support, see the sections on the back of this sheet.

## Fill ink tanks

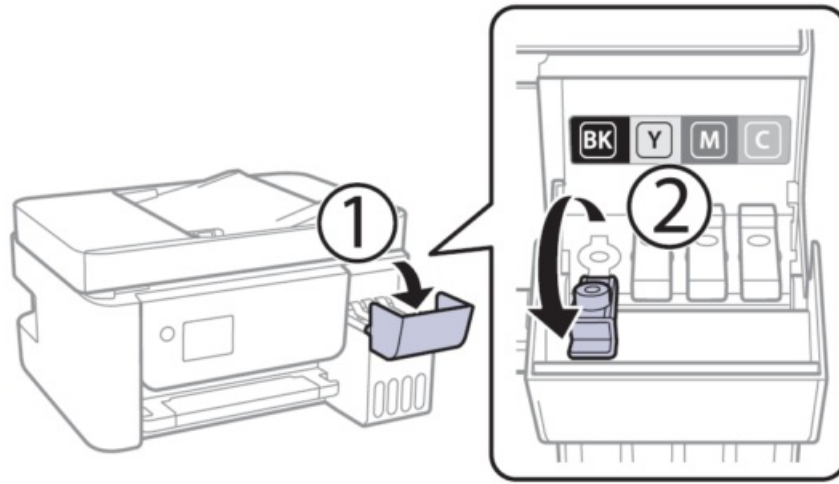
**Warning:** Keep the ink bottles out of the reach of children and do not drink the ink.

**Caution:** This product requires careful handling of ink. If ink spills, wipe it off immediately with a damp towel to avoid permanent stains. If ink gets on your clothes or belongings, it may not come off.

### Note:

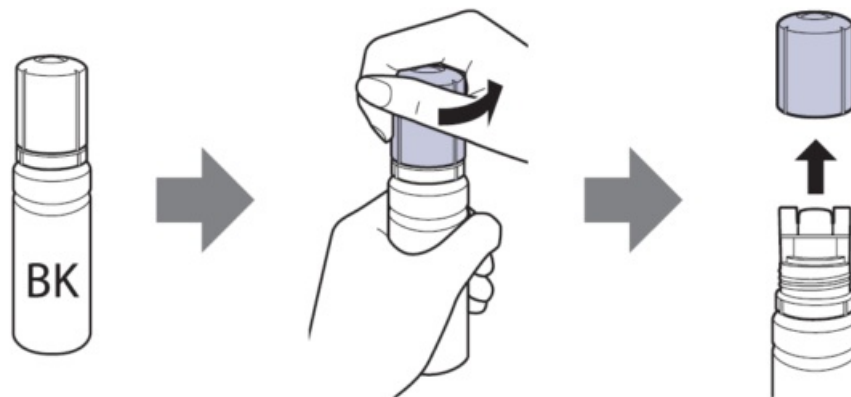
- Epson cannot guarantee the quality or reliability of third-party ink.
- Use the ink bottles included with the printer to set up the product. Part of the ink will be used to charge the print head. These bottles will print fewer pages compared with replacement ink bottles.
- Epson strongly recommends the use of genuine ink to ensure optimal print quality and performance.

1. Open the ink tank cover, then open the cap for the black (BK) ink tank.



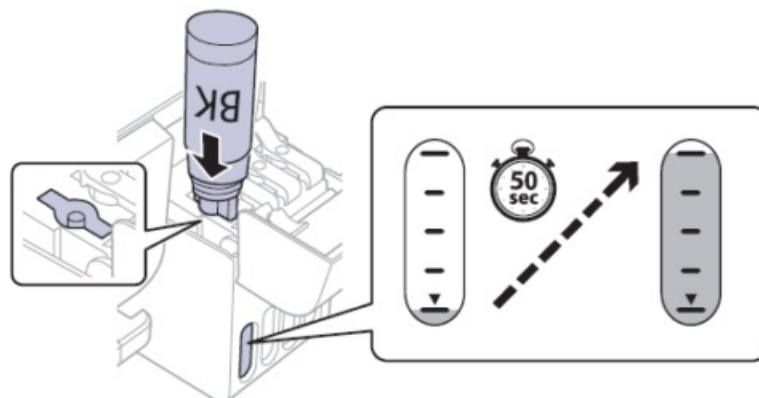
**Note:** Refer to the color-coded sticker above the ink tank unit to identify the color of each tank.

2. Unpack the black (BK) ink bottle. Hold the ink bottle upright and slowly turn the bottle cap to remove it.



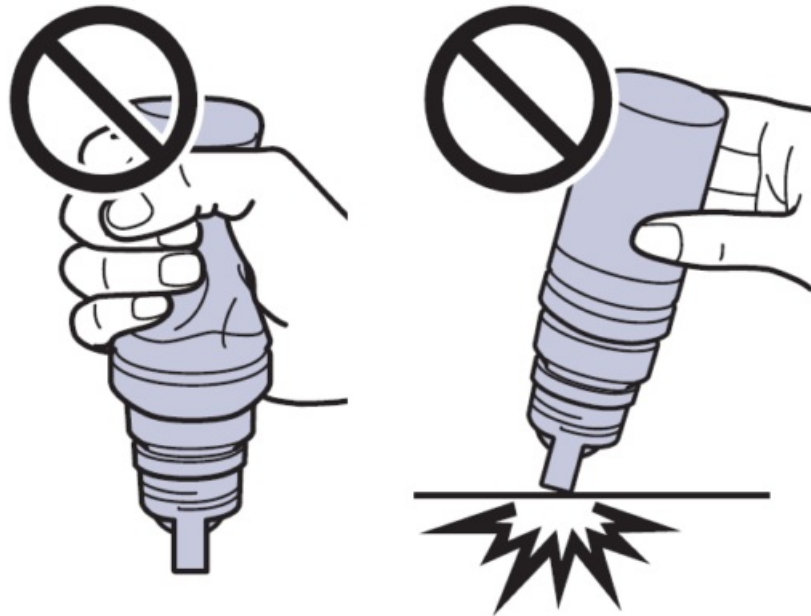
**Caution:** Do not shake or squeeze the ink bottle. Do not touch the top of the ink bottle after its cap is removed.

3. Insert the ink bottle into the filling port.



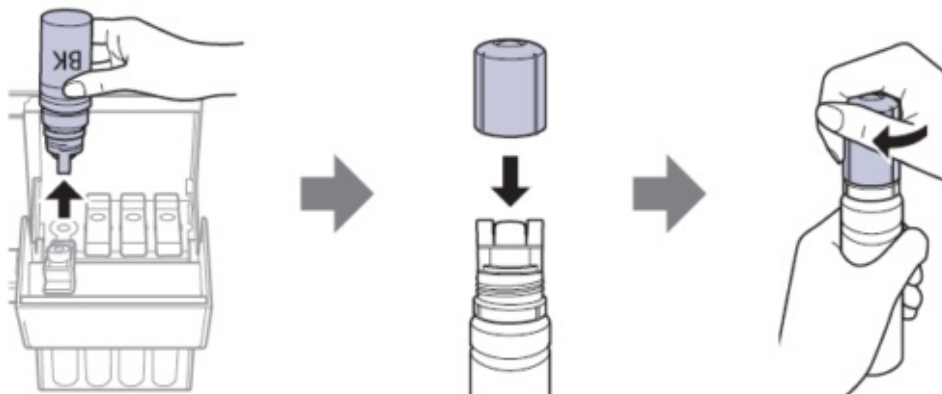
**Note:** Do not force the bottle into position; each bottle is keyed for each color.

4. Wait for the ink to fill the tank. Do not squeeze the bottle or allow it to contact any other surface.



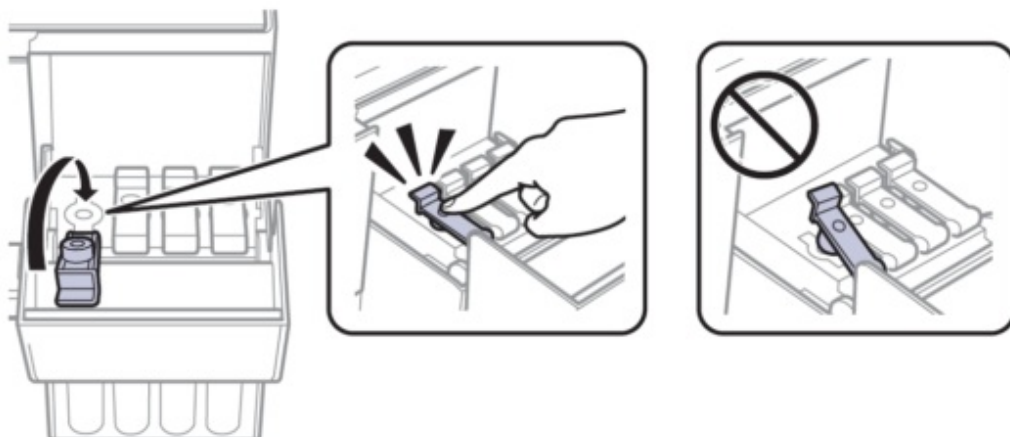
**Note:** Ink flows into the tank and stops automatically when the ink tank is filled to the upper line. If ink does not flow from the bottle, lift and reinsert the bottle.

5. When the ink tank is full, remove the ink bottle and securely close it with the bottle cap. If any ink remains in the bottle, close the bottle and store it for later use.

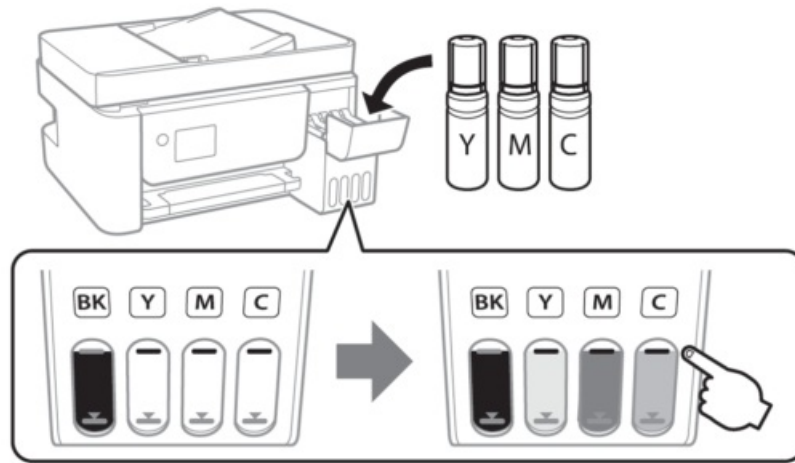


**Note:** Do not leave the ink bottle inserted; otherwise the bottle may be damaged or ink may leak.

6. Securely close the black ink tank cap.

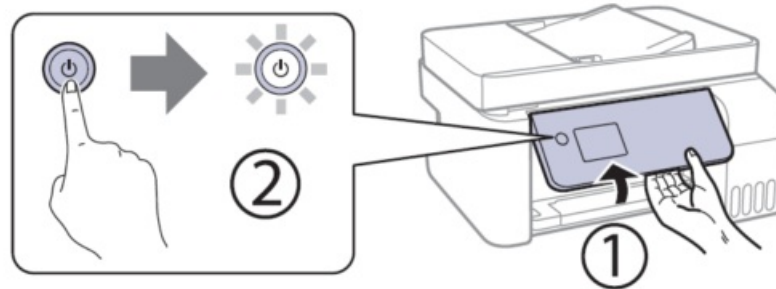
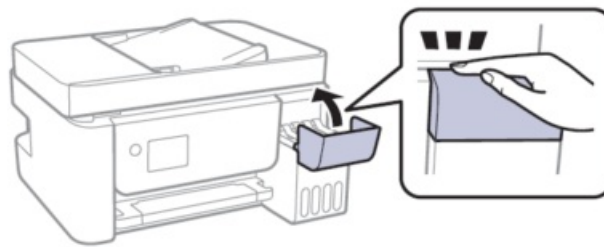


7. Repeat the previous steps for the other colors.



8. Close the ink tank cover.

9. Raise the control panel, then press the **power** button to turn on the product. The power light flashes.



**Note:** If an error code appears, turn off the product and check that no protective material has been left inside the product.

10. Select your language, country, date, and time settings.

**Note:** You can change these settings later using the product's control panel. For more information, see the online User's Guide.

11. When an Epson Smart Panel setup message appears on the LCD screen, select the option to continue setup.

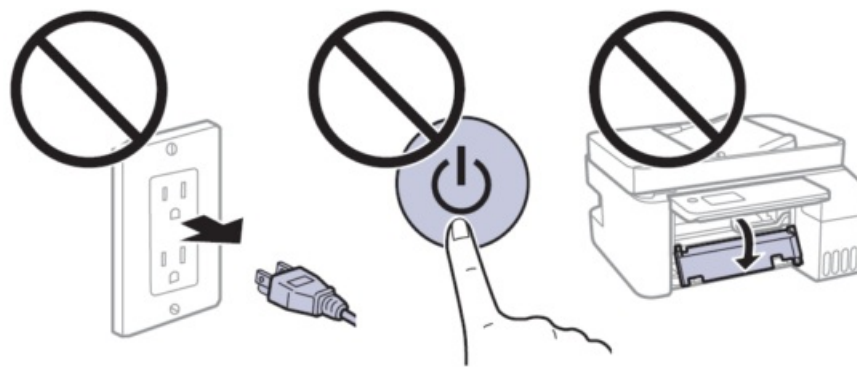
12. When the message to see the Start Here sheet appears on the LCD screen, press and hold the help button for 5 seconds.



13. Press the start button to start ink charging. Ink charging takes about 11 minutes.

**Note:** When the power light stops flashing, ink charging is complete. Once initial setup of the printer is complete, you can top off the ink tanks with any remaining ink. See the online User's Guide for instructions.

**Caution:** Do not unplug or turn off the product, or open the inner cover while the product is charging or you'll waste ink.



**Note:** After some ink is used for charging, the rest is available for printing.

14. Press the OK button to proceed with initial setup.

15. Follow the on-screen instructions to adjust the print quality of your product.

**Note:**

- You need to load paper before you can adjust the print quality. See "Load paper" on this sheet for details.
- Select Adjust Later if you want to adjust the print quality later. For more information, see the online User's Guide.

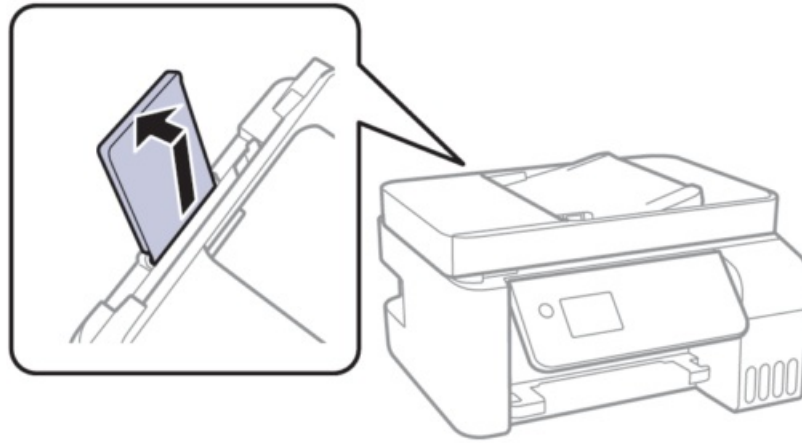
**Caution:** After setup, periodically inspect the ink levels to ensure they do not fall below the lowest lines on the tanks. Prolonged use when ink is below the lowest line could damage the product. See the online User's Guide for refilling instructions.

## Load paper

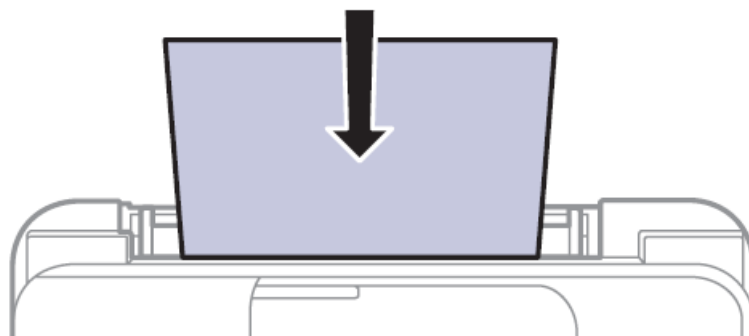
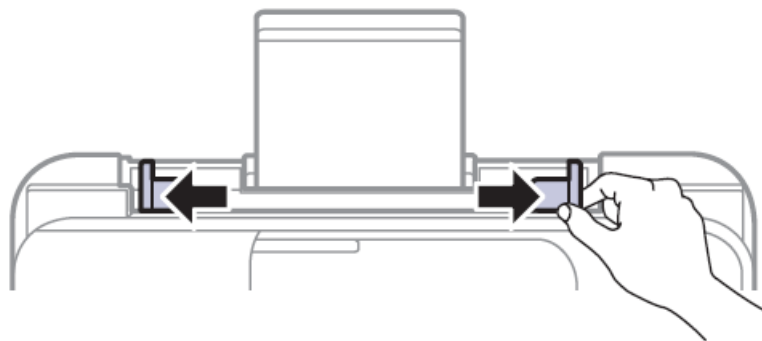
See the online User's Guide for information about loading capacity, available paper types and sizes, loading envelopes, and using the ADF.

1. Make sure the product is not charging ink. Then raise the paper support and tilt it backward slightly.



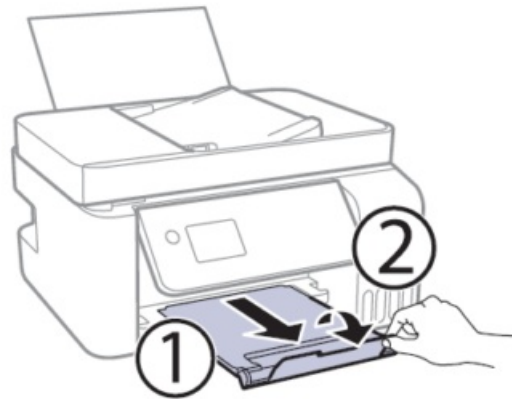
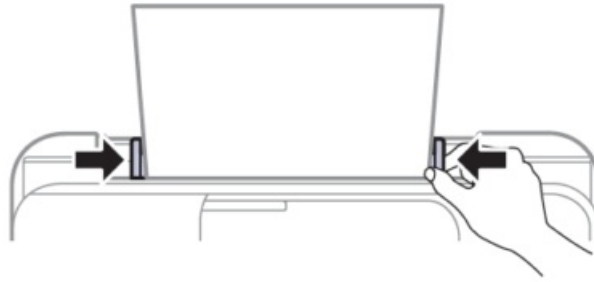


2. Slide the edge guides all the way out.
3. Load paper, glossy or printable side up and short edge first, in the middle of the rear paper feeder.



**Note:** Make sure the paper is under the mark inside the edge guides.

4. Slide the edge guides against the paper, but not too tightly.
5. Pull out the output tray, then raise the paper stopper.



6. Select the paper settings on the product's control panel.

## Connect the fax line

1. Connect a phone cord to a telephone wall jack and to the LINE port on your product. See the online User's Guide for more information.
2. Press the OK button to set up the fax, or press the # pound button to set it up later.

## Install software

### Note:

- If you are using a Mac or your computer does not have a CD/DVD drive, an Internet connection is required to obtain the product software.
  - To print from a Chromebook™, go to [www.latin.epson.com/support/chromebookprint](http://www.latin.epson.com/support/chromebookprint) for instructions.
1. Make sure the product is NOT CONNECTED to your computer. Windows®: If you see a Found New Hardware screen, click Cancel and disconnect the USB cable.
  2. Insert the product CD (Windows only) or download and run your product's software package. For the latest software, visit [www.latin.epson.com/support/L5290](http://www.latin.epson.com/support/L5290).
  3. Follow the instructions on the computer screen to run the setup program.
  4. When you see the Select Your Connection screen, select one of the following and follow the on-screen instructions:

- **Wireless connection**

In most cases, the software installer automatically attempts to set up your wireless connection. If setup is unsuccessful, you may need to enter your network name (SSID) and password. •

- **Direct USB connection**

Make sure you have the USB cable ready.

- **Wired network connection**

Make sure you have an Ethernet cable (not included).

## **Mobile and voice-activated printing**

- Print directly from your Android™ (v4.4 or later) device\*. Simply connect your printer and device to the same network and tap the menu icon to select the print option.
- Turn your mobile device into an intuitive, easy-to-use printing and scanning control center with Epson Smart Panel. Download the app from your mobile device's app store.
- Print from wherever you are, next to your printer or remotely, with Epson Connect™. Learn more at [www.latin.epson.com/connect](http://www.latin.epson.com/connect).
- Use voice-activated assistants to print a variety of creative and everyday items from your Epson product. Simply add your product to an Epson Connect account, then link the account to a voice-activated assistant. [www.latin.epson.com/support/voice](http://www.latin.epson.com/support/voice) for more information.
  - May require the Epson Print Enabler or Mopria Print Service app from Google Play™.

## **Any problems?**

### **The network setup was unsuccessful.**

- Make sure you select the right network name (SSID).
- Restart your router (turn it off and then on), then try to connect to it again.
- The printer can only connect to a network that supports 2.4 GHz connections. If your router offers both 2.4 GHz and 5 GHz connections, make sure 2.4 GHz is enabled.
- If you see a firewall alert message, click Unblock or Allow to let setup continue.
- If your network has security enabled, make sure you enter your network password (WEP key or WPA passphrase) correctly. Be sure to enter your password in the correct case.
- Print a network connection report to identify network problems and solutions. See your online User's Guide for instructions.

### **There are lines or incorrect colors in my printouts.**

Run a nozzle check to see if there are any gaps in the printout. Then clean the print head, if necessary. See the online User's Guide for more information.

### **The product's screen is dark.**

Make sure your product is turned on and press any button to wake it from sleep mode.

### **Setup is unable to find my product after connecting it with a USB cable.**

Make sure your product is on and the USB cable is securely connected.

## **Any questions?**

## User's Guide

Windows: Click the icon on your desktop or Apps screen to access the online User's Guide. Mac: Click the icon in Applications/Epson Software/Guide to access the online User's Guide. If you don't have a User's Guide icon, go to the Epson website, as described in "Technical support."

## Technical support

Visit [www.latin.epson.com/support/L5290](http://www.latin.epson.com/support/L5290) to download drivers, view manuals, get FAQs, or contact Epson. You can also speak to a service technician by calling one of these numbers:

- Argentina (54 11) 5167-0300
- Guatemala\* 1-800-835-0358
- Mexico 01-800-087-1080
- Bolivia\* 800-100-116
- Mexico City (52 55) 1323-2052
- Chile (56 2) 2484-3400
- Nicaragua\* 00-1-800-226-0368
- Colombia 018000-915235
- Panama\* 00-800-052-1376
- Bogota (57 1) 592-2200
- Paraguay 009-800-521-0019
- Costa Rica 800-377-6627
- Peru 0800-10126
- Dominican 0800-288-37766
- Lima (51 1) 418-0210
- Republic\* 1-888-760-0068
- Uruguay 00040-5210067
- Ecuador\* 1-800-000-044
- Venezuela (58 212) 240-1111
- El Salvador\* 800-6570

- contact your local phone company to call this toll-free number from a mobile phone.

If your country does not appear on the list, contact your nearest Epson sales office. Toll or long-distance charges may apply.

## Need paper and ink?

Ensure brilliant results with Epson specialty and plain papers, engineered specifically for Epson printers. You can purchase them from an Epson authorized reseller. To find the nearest one, visit [www.latin.epson.com](http://www.latin.epson.com) or contact Epson as described in "Any questions?" on this sheet.



## L5290 replacement inks

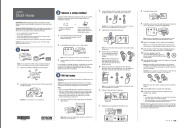
Color	Part number
Black	T544120-AL
Cyan	T544220-AL
Magenta	T544320-AL
Yellow	T544420-AL



EPSON and Epson Smart Panel are registered trademarks, EPSON Exceed Your Vision is a registered logomark, and Epson Connect is a trademark of Seiko Epson Corporation. Designed for Excellence is a trademark of Epson

America, Inc. Windows is a registered trademark of Microsoft Corporation in the United States and/or other countries. Mac is a trademark of Apple Inc., registered in the U.S. and other countries. Android, Chromebook, and Google Play are trademarks of Google LLC. General Notice: Other product names used herein are for identification purposes only and may be trademarks of their respective owners. Epson disclaims any and all rights in those marks. This information is subject to change without notice. © 2021 Epson America, Inc., 2/21 Printed in XXXXXX

## Documents / Resources

	<a href="#">EPSON L5290 L Series All-in-One Printer</a> [pdf] User Guide L5290, L Series, All-in-One Printer, L Series All-in-One Printer, L5290 L Series All-in-One Printer
---	---

## References

- [E Epson](#)
- [E Epson](#)
- [E Epson](#)
- [E Epson](#)
- [E Epson](#)