



EPSON Document Scanner User Guide

[Home](#) » [Epson](#) » EPSON Document Scanner User Guide 

EPSON Document Scanner User Guide

ES-50 ES-60W

EPSON®
EXCEED YOUR VISION

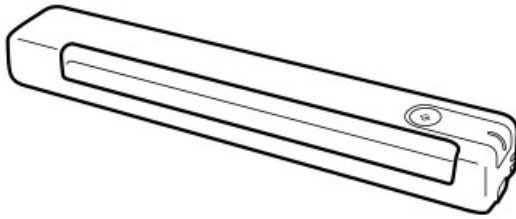
Setup Guide



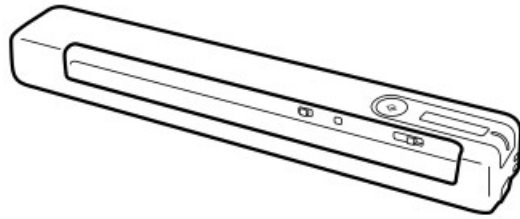
414140900

© 2021 Seiko Epson Corporation
Printed in XXXXXX

ES-50



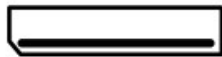
ES-60W



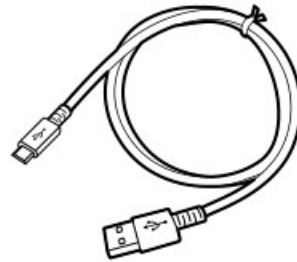
Cleaning sheet



Calibration sheet



USB



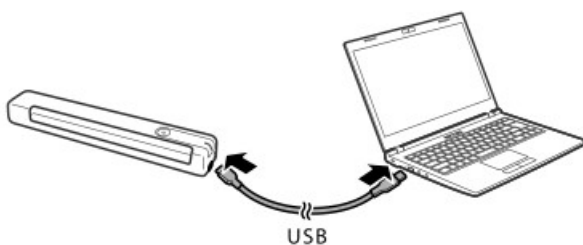
Windows



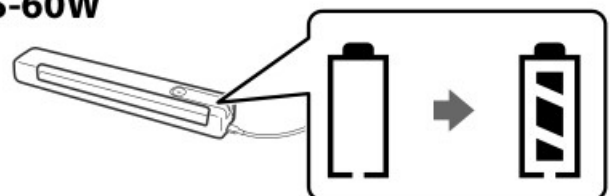
Contents

- 1 1
- 2 2
- 3 3
- 4 Information for Users in Taiwan only
- 5 Documents / Resources
- 6 Related Posts

1



ES-60W



Connect your computer to the scanner with the USB cable.

If an unknown device message is displayed on your computer, you can ignore it.

ES-60W:

Before using the scanner over a wireless (Wi-Fi) network, make sure the battery is charged sufficiently.

2

Windows



If a Firewall alert appears, allow access for Epson applications.

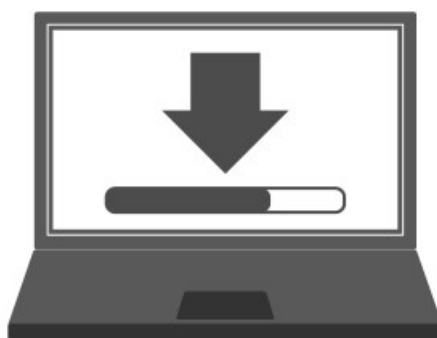
Windows (No CD/DVD drive)

Mac OS X

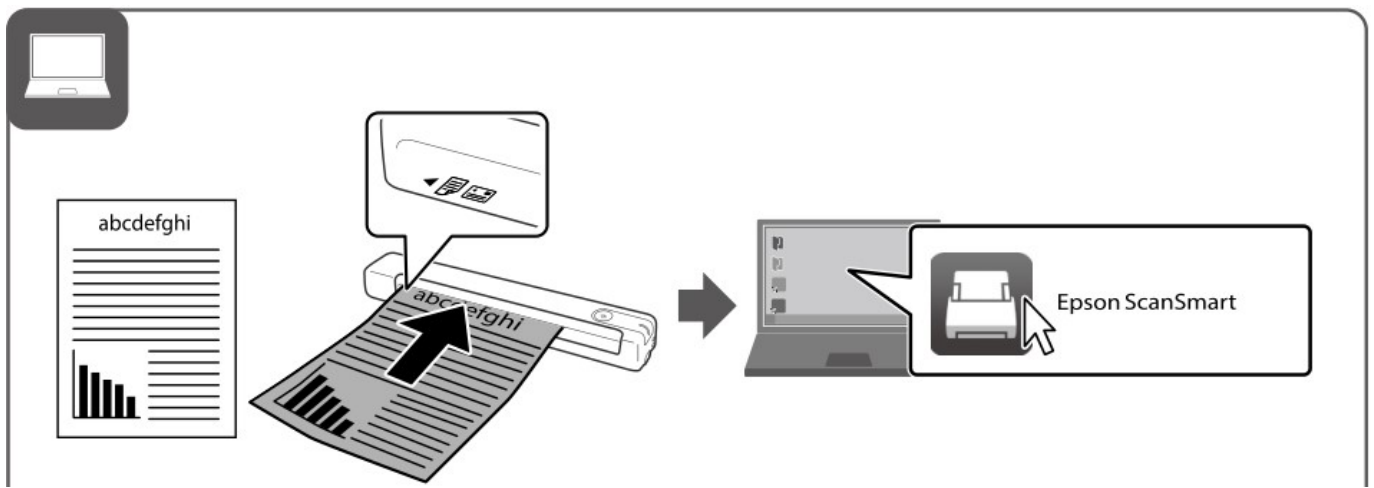


Visit the website to install the software.

3

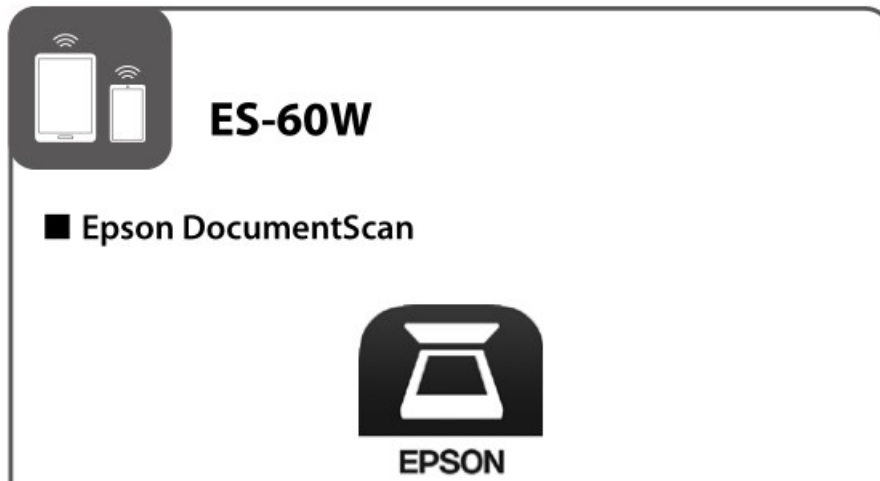


Start the setup process, install the software, and then make connection settings.

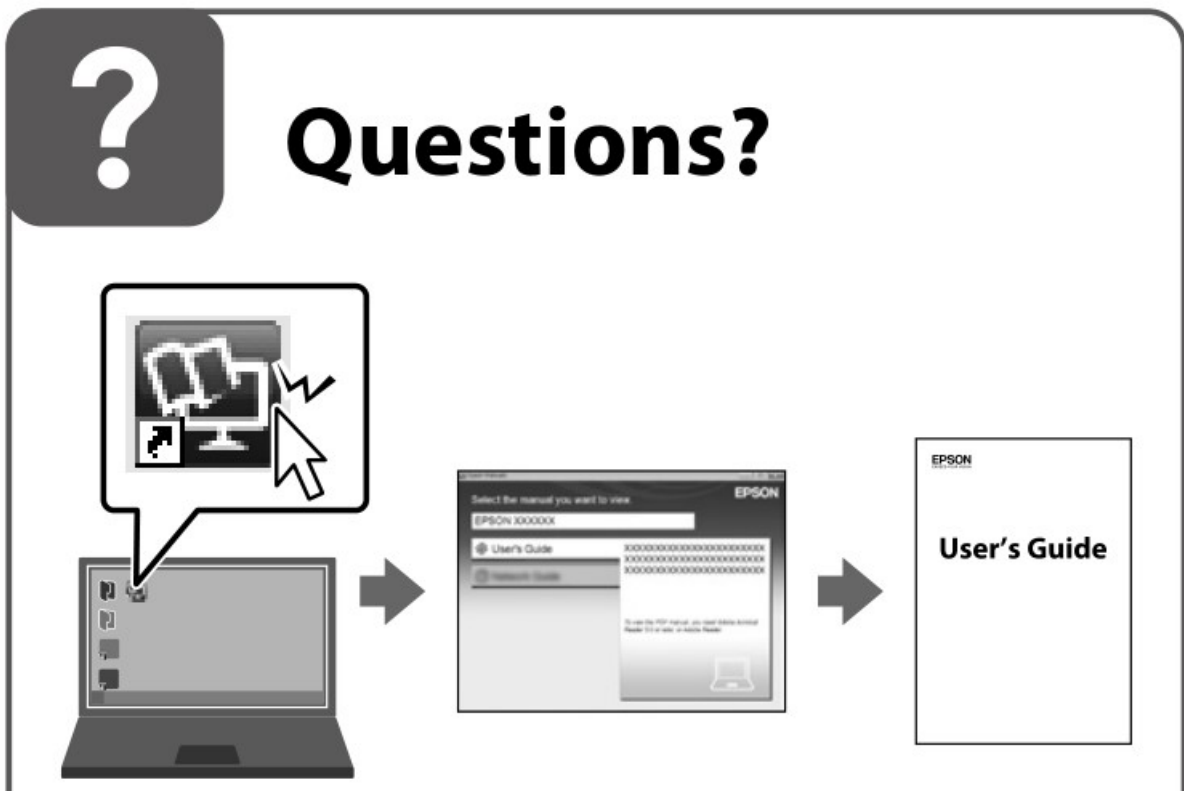


Place the original in the input slot, and start the application.

You can also start by pressing the Start button on the scanner.



To scan to an iOS or Android™ device, download and install the free Epson DocumentScan app from the [App Store](#) or [Google Play™](#).



You can open the User's Guide (PDF) from the shortcut icon, or download the latest version from the following website.



Information for Users in Taiwan only

URL : http://www.epson.com.tw/TW_RoHS

EPSON, EPSON EXCEED YOUR VISION, EXCEED YOUR VISION and their logos are registered trademarks or trademarks of Seiko Epson Corporation.

The contents of this manual and the specifications of this product are subject to change without notice.



Documents / Resources



[EPSON EPSON Document Scanner](#) [pdf] User Guide
EPSON, ES-50, ES-60W, Document, Scanner