

[Skip to content](#)

Manuals+

User Manuals Simplified.

EPSON ELPWT01 Wireless Transmitter User Guide

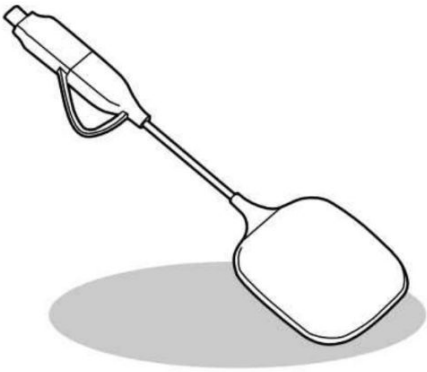
[Home](#) » [Epson](#) » EPSON ELPWT01 Wireless Transmitter User Guide



EXCEED YOUR VISION

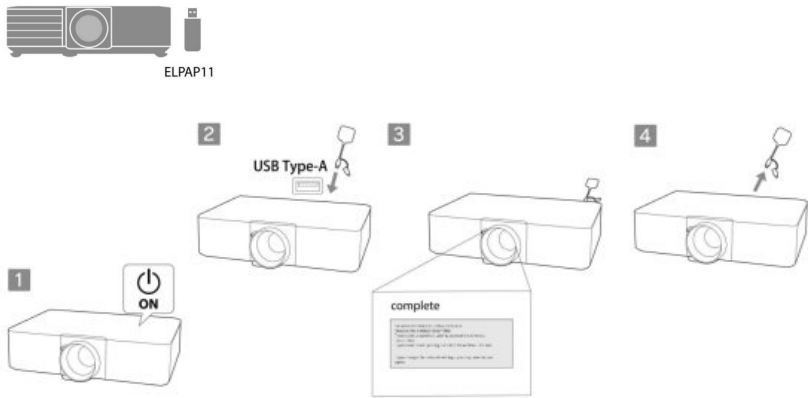
ELPWT01 Wireless Transmitter

User Guide



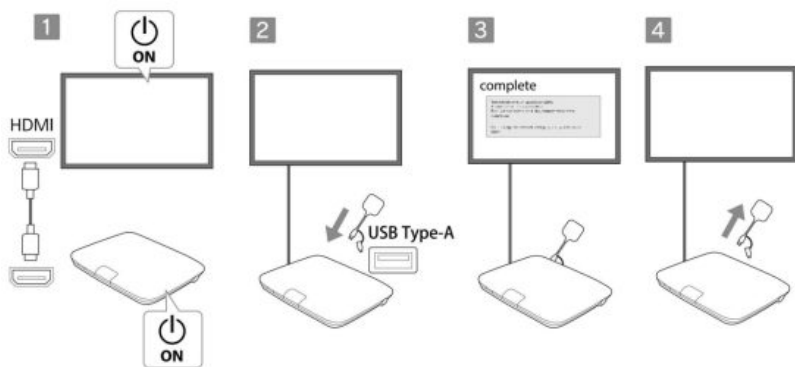
- Contents [hide](#)
- [1 Pairing on ELPWP10](#)
 - [2 pairing on ELPW20](#)
 - [3 Pairing on Computer](#)
 - [4 About This Guide](#)
 - [5 Safety Instruction](#)
 - [6 ELPWT01 Specification](#)
 - [7 Product Parts and Function](#)
 - [8 Documents / Resources](#)
 - [9 Related Posts](#)

Pairing on ELPWP10

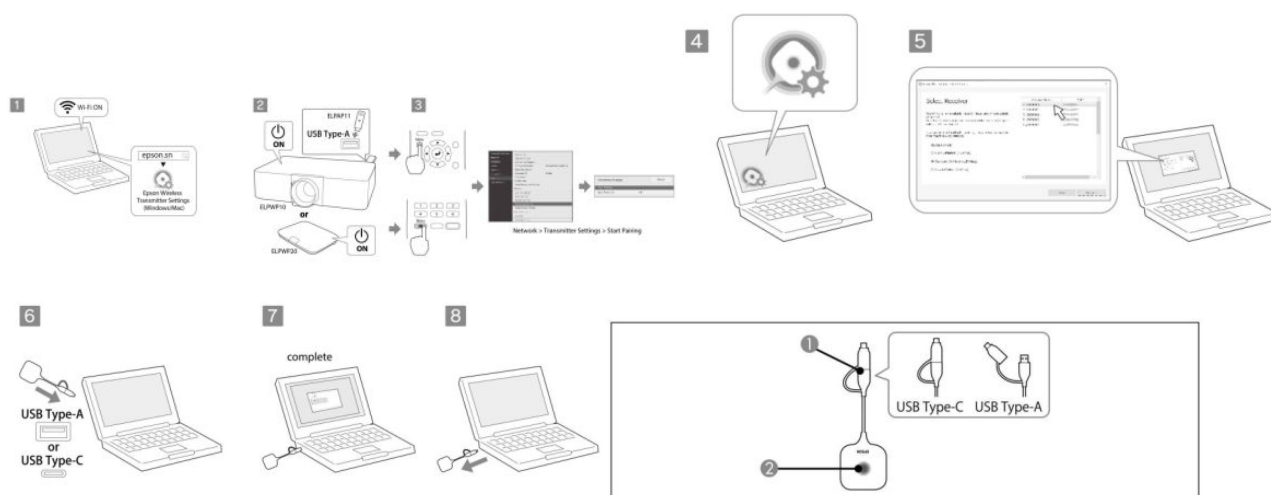


pairing on ELPW20





Pairing on Computer



About This Guide

This guide explains how to use the Wireless Transmitter ELPWT01.

ELPWT01 is a transmitter that can be added to the Wireless Presentation System ELPWP1 0/ELPWP20.

For details on how to use the system, use the QR code on the right to access our website to see the "Epson Wireless Presentation System User's Guide".



<http://epson.sn/>

Safety Instruction



Warning

Maybe a source of electromagnetic interference to cardiac pacemakers causes them to malfunction. Before using this unit, check that there is no one in the vicinity using a cardiac pacemaker.

Maybe a source of electromagnetic interference to sensitive medical equipment and cause them to malfunction. Before using this unit, check that there is no sensitive medical equipment in the vicinity.





Maybe a source of electromagnetic interference and cause malfunctions or accidents to occur. Do not use this unit near automatically controlled equipment such as automatic doors or fire alarms.

Do not attempt to disassemble or remodel this transmitter (ELPWT01).

ELPWT01 Specification

Item	Specifications
Power Consumption	5 VDC / 0.5 A
Operating Temperature	0 to +40°C (Humidity of 20 to 80%, No condensation)
Storage Temperature	-20 to +70°C (Humidity of 0 to 95%, No condensation)
Operating Altitude	0 to 3,000 m
Dimensions	Width 63.5 x Height 11 x Depth 175 mm (excluding USB conversion adapter)
Weight	Approx. 53 g

Product Parts and Function

USB terminal		Indicator	
Connects to your computer's USB port. You can use this in two ways: with the USB conversion adapter (USB C) or without (USB-A). When pairing on a projector, connect it to the USB-A port.		Flashing blue quickly	The wireless transmitter is connected to your computer and is waiting for the Epson Wireless Presentation software to launch.
		Lit blue	The Epson Wireless Presentation software is running
		Flashing blue slowly	Projecting the computer's screen.
		Lit orange	An error has occurred. Close the Epson Wireless Presentation software, and then disconnect the wireless transmitter from your computer.

Documents / Resources



[EPSON ELPWT01 Wireless Transmitter](#) [pdf] User Guide
AE-ELPWT01, AEELPWT01, BKMAE-ELPWT01, BKMAEELPWT01, ELPWT01 Wireless Transmitter, ELPWT01, Wireless Transmitter

Manuals+,

- [home](#)
- [privacy](#)