

EPSON® ELPCB03N Connection and Control Box



EPSON ELPCB03N Connection and Control Box User Guide

[Home](#) » [Epson](#) » EPSON ELPCB03N Connection and Control Box User Guide 

Contents

- [1 EPSON ELPCB03N Connection and Control Box](#)
- [2 Product Usage Instructions](#)
- [3 Frequently Asked Questions](#)
- [4 How To Switch Input Sources](#)
- [5 Part Names and Functions](#)
- [6 Input Ports](#)
- [7 Connection Examples](#)
- [8 Switching Images](#)
- [9 Troubleshooting](#)
- [10 Documents / Resources](#)
 - [10.1 References](#)
- [11 Related Posts](#)

EPSON®

EPSON ELPCB03N Connection and Control Box



Product Specifications

- **Input Ports:** A/V Mute, Projector, Input source buttons, Input interface cover, Output ports, Audio Mute, Volume dial, Power switch
- **Output:** REC Out port, Audio-L/R port, Video input port
- **Connectivity:** Computer1 input port, Computer2 input port, HDMI1 port, HDMI2 port, USB-A port, Mic port, Audio1 port, Audio2 port, AUX In port, USB-B port
- **Controls:** A/V Mute button, Projector button, Volume dial, Power switch

Product Usage Instructions

Connecting Devices

1. Connect your devices to the respective input ports on the Connection & Control Box.
2. Ensure cables are securely plugged in according to your devices.

Switching Input Sources

1. Press the Input Source buttons on the Control Box to switch between connected devices.
2. Wait for the projection to start after changing sources.

Adjusting Settings

- Use the Volume dial to adjust the volume of the projector or external speakers.
- Press the A/V Mute button to temporarily mute the audio.
- Use the Power switch to turn the projector and Control Box on or off.

Preventing Sleep Mode

To prevent sleep mode, hold down the Projector and LAN buttons while turning on the power switch.

Frequently Asked Questions

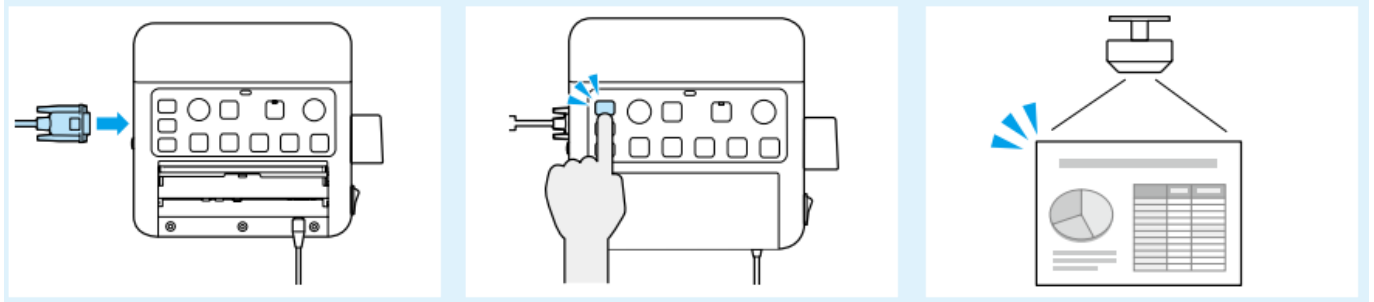
Q: How can I prevent the device from entering sleep mode?

A: To prevent sleep mode, hold down the Projector and LAN buttons while turning on the power switch.

Q: What should I do if an error occurs with the Connection & Control Box?

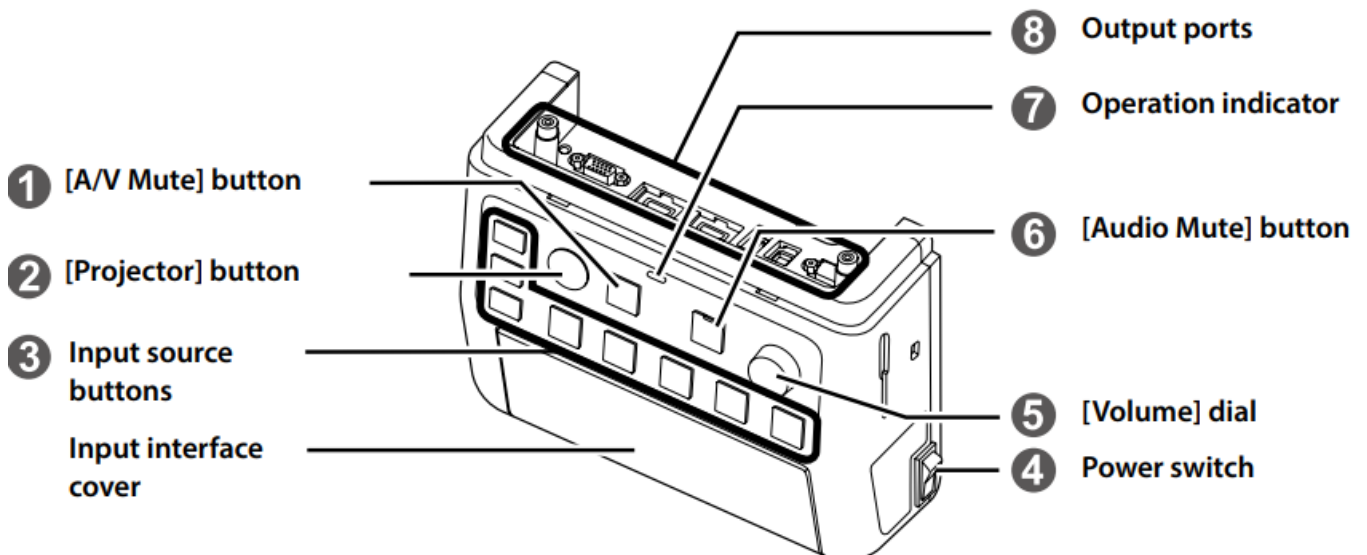
A: If an error occurs (indicated by a blue light), unplug the Box and contact your dealer for assistance.

How To Switch Input Sources



1. Connect devices
2. Change sources
3. Projection starts

Part Names and Functions



1. Temporarily interrupts video and audio output from the projector or speakers, except for the [Mic] port and the [AUX In] port.
2. Turns the projector power on or off.
3. Switches the source.
4. Turns the power on or off.
5. Adjusts the volume of the projector or the external speakers.

6. Temporarily mutes the audio. While audio is muted, the indicator of the mute button turns blue.

7. Indicates the status of the Connection & Control Box.

- This does not indicate the status of the projector.



- **Blue** Operating normally.



- **Orange** Sleep mode.

- This device enters sleep mode after eight hours of inactivity. Press any button to resume.



- **Blue** An error has occurred.

- Unplug the Connection & Control Box, and contact your dealer.

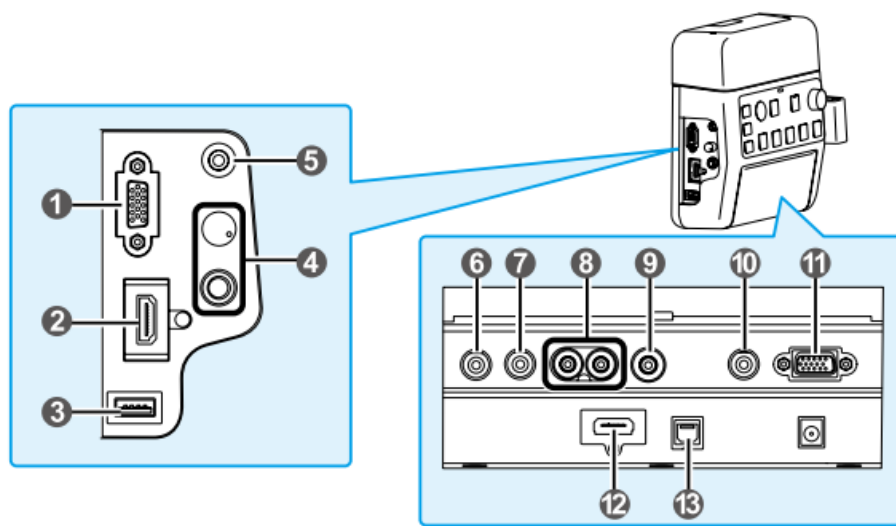
- **For inquiries:** Projector's "User's Guide"

8. Connects the projector to this device. See the Installation Manual for more details.

- You can stop this device from entering sleep mode. Turn On the power switch while simultaneously holding down the [Projector] and the [LAN] buttons.
- To return to the original status, turn On the power switch while simultaneously holding down the [Projector] and the [A/V Mute] buttons.

Input Ports

Connect cables according to your devices to use.

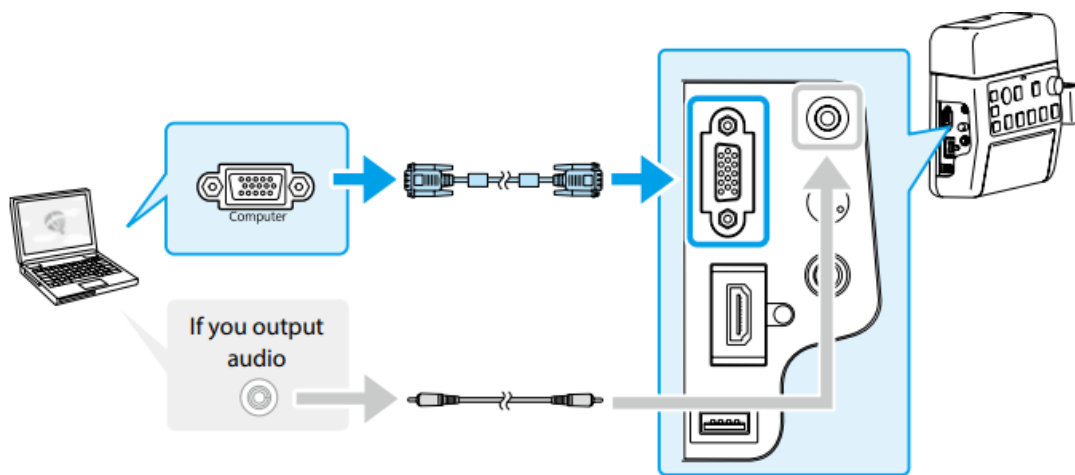


① [Computer1] input port	(Mini D-Sub 15-pin (female))	}	
⑪ [Computer2] input port			
② [HDMI1] port			
⑫ [HDMI2] port			
③ [USB-A] port			
④ [Mic] port (φ 6.3 mm stereo pin jack, 2 plugs)/ [Volume] dial (mic input)			
⑤ [Audio1] port	(Φ 3.5 mm stereo mini pin jack, 3 plugs) We recommend using a shielded cable.	}	
⑩ [Audio2] port			
⑥ [AUX In] port			
⑦ [REC Out] port			
⑧ [Audio-L/R] port (RCA jack)			
⑨ [Video] input port (RCA jack)			
⑬ [USB-B] port			

- When using a commercially available dynamic microphone, connect to the **4** [Mic] port.
- Plug-in power is not supported.
- When inputting audio from a portable audio player and such, connect the audio cable to **6** the [AUX In] port. The audio input from the **6** [AUX In] port is always played regardless of the selected source.
- When the projector's source is set to HDMI, USB display, or LAN, audio from audio devices connected to the [Mic] or [AUX In] ports cannot be simultaneously output from the projector's built-in speakers.
- When connecting a recording device, connect the audio cable to **7** the [REC Out] port. The audio input from the audio input ports, the Aux In, and the Mic port is output. Audio is output at a constant level and cannot be adjusted.

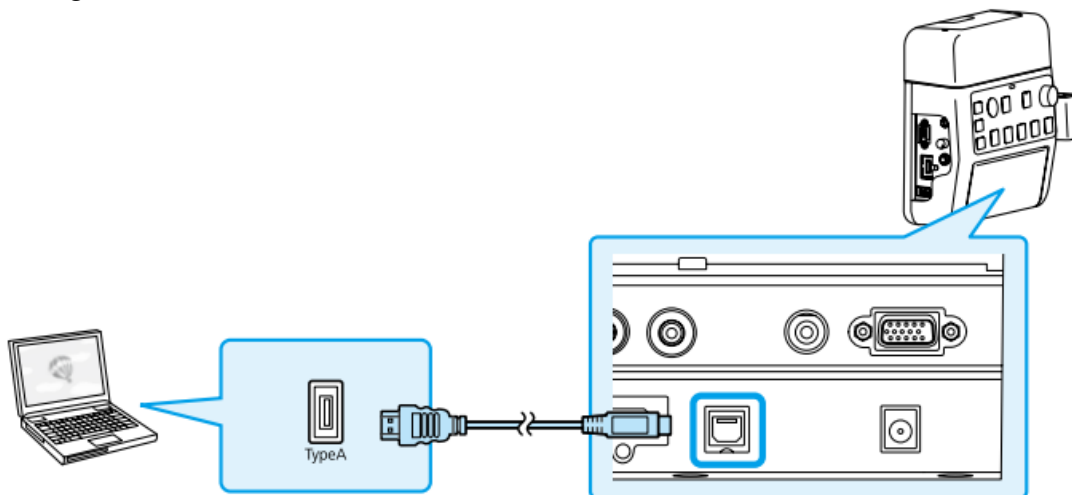
Connection Examples

Connecting Using a Computer Cable



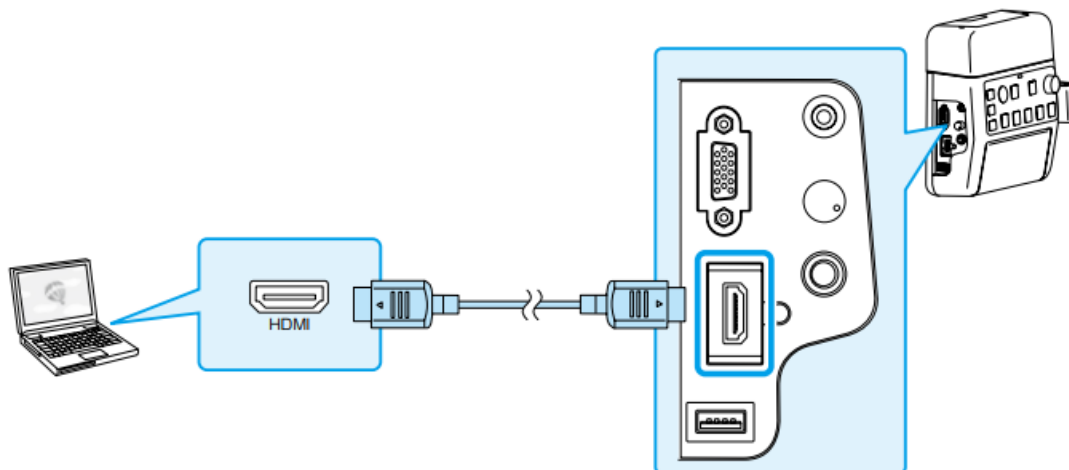
- Connect the ports in either of the following combinations.
- When using [Computer1] input port → [Audio1] port
- When using [Computer2] input port → [Audio2] port

Connecting Using a USB Cable

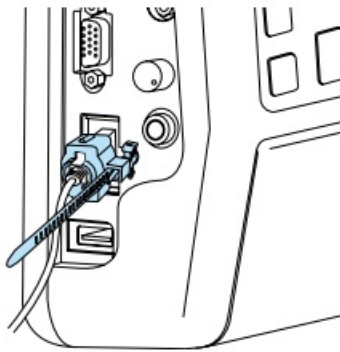


Be sure to connect the projector and the computer directly, not via a USB hub.

Connecting with HDMI Cables



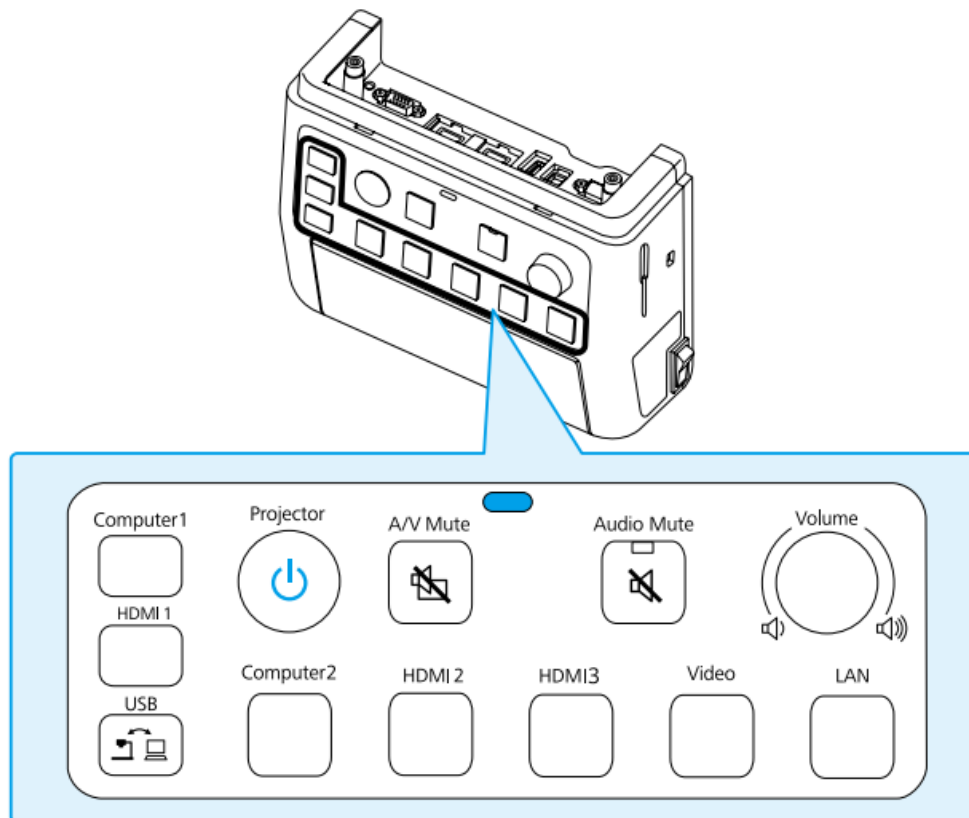
- If you use a thick HDMI cable, it may disconnect under its own weight.
- Use the HDMI cable clamp to secure the cable.



- When the projector only has one HDMI port, make sure you connect the HDMI cable to the [HDMI1] port.
- If you switch the HDMI1 source and the HDMI2 source while playing a movie, the movie may freeze. Stop the movie before switching sources.

Switching Images

Names and Functions of the Input Source Buttons





- Press the Input Source buttons to input images and audio from the device connected to the port as shown in the following table.
- Switching sources may take a while.

Input Source Button	Image Input	Audio Input*
Computer1	Computer1	Audio1
HDMI1	HDMI1	HDMI1
USB	USB Display ⇔ USB-A	USB Display/Audio2**
Computer2	Computer2	Audio2
HDMI2	HDMI2	HDMI2
HDMI3	HDMI3***	HDMI3***
Video	Video	Audio-L/R
LAN	LAN	LAN/Audio2**



- Audio from the [Mic] port or [AUX In] port on this device is also input.
- If the projector supports audio transfer using a USB display or over a network, audio is input through a USB Display or LAN. When you use a projector that does not support audio transfer, [Audio2] is input.
- Inputs images and audio from the device connected to the projector's HDMI3 port.

Troubleshooting





No images appear	
Did you turn on the connected device?	Turn on the power of the connected device.
Did you turn on the projector?	Press the [Projector] button.
Did you press the correct Input Source button for the connected device you want to play?	When no specific input source is selected, the [Computer1] button is automatically selected and images from the [Computer1] input port are displayed. Press the correct Input Source button corresponding to the connected device.
Did you press the [A/V Mute] button?	Press the [A/V Mute] button again.
Is the operation indicator light on  Orange ?	This device enters sleep mode after eight hours of inactivity. Press any button and the indicator turns to,  Blue press the Input Source button.

The source can not be switched
Did you press the correct Input Source button? Press the correct Input Source button. corresponding to the connected device?
Is the Message Broadcasting dialog displayed? Press the [Projector] button and restart the projector?

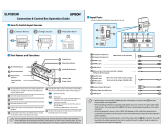
The Connection & Control Box is not operating

Is the power of this product on?		Turn on the power switch.
Is the power cable plugged in?		Plug in the power cable of the Connection & Control Box.
Is the operation indicator flashing Blue ? 		Unplug the power cable of the Connection & Control Box, and contact your dealer. For inquiries:  Projector's "User's Guide"

No sound comes out or the sound is faint

Is the projector's audio input setting correct ?	Check the projector's "A/V Output" or "Audio Settings".  Projector's "User's Guide"
Did you turn down the audio volume of the projector or speakers too much?	Turn up the volume with the [Volume] dial.  Projector's or Speakers' "User's Guide"
Is the microphone level appropriately set for the projector or this device?	Adjust the input level of the microphone.  Projector's "User's Guide", "Input Ports"
Is the audio cable of the connected device correctly connected?	Check the connection of the audio cable.  "Input Ports", "Installation Manual" – "Connection example for outputting audio"
Is there a cable connected to the projector's audio output port?	If a cable is connected to the projector's audio output port, sound does not come out from the built-in speaker.

Documents / Resources

	EPSON ELPCB03N Connection and Control Box [pdf] User Guide ELPCB03N Connection and Control Box, ELPCB03N, Connection and Control Box, and Control Box, Control Box, Box
---	--

References

- [User Manual](#)

[Manuals+](#), [Privacy Policy](#)

This website is an independent publication and is neither affiliated with nor endorsed by any of the trademark owners. The "Bluetooth®" word mark and logos are registered trademarks owned by Bluetooth SIG, Inc. The "Wi-Fi®" word mark and logos are registered trademarks owned by the Wi-Fi Alliance. Any use of these marks on this website does not imply any affiliation with or endorsement.