

EPSON EB-735Fi Laser Ultra Short Throw Interactive Projector



EPSON EB-735Fi Laser Ultra Short Throw Interactive Projector User Manual

[Home](#) » [Epson](#) » EPSON EB-735Fi Laser Ultra Short Throw Interactive Projector User Manual 

Contents

- 1 EPSON EB-735Fi Laser Ultra Short Throw Interactive Projector
- 2 Product Usage Instructions
- 3 Frequently Asked Questions
- 4 Product Box Contents
- 5 Connecting a Device
- 6 Turning On the Projector
- 7 Initial Setting Wizard
- 8 Home Screen
- 9 Adjusting the Image Shape
- 10 Easy Interactive Function
- 11 Documents / Resources
 - 11.1 References



EPSON EB-735Fi Laser Ultra Short Throw Interactive Projector



Product Specifications

- Model: EB-735Fi/EB-725Wi
- Projection Technology: LCD
- Resolution: 1920 x 1080 pixels
- Brightness: 3500 lumens
- Contrast Ratio: 16,000:1
- Aspect Ratio: 16:9
- Connectivity: HDMI, USB, Composite
- Interactive Features: Pen and Touch Operation

Product Usage Instructions

1. Connecting the Projector

To connect the projector, use the provided HDMI cable or composite cable. For computers, connect using HDMI or USB cable.

2. Turning On the Projector

Press the power button to turn on the projector.

3. Initial Setting Wizard

Follow the on-screen instructions to complete the initial setup wizard for your projector.

4. Home Screen

Access the home screen for navigation and options related to your projector settings.

5. Adjusting the Image Shape

Use the controls on the projector to adjust the image shape and size as needed.

6. Changing the Projection Mode

Select the desired projection mode from the projector settings menu.

7. Easy Interactive Function (EB-735Fi/EB-725Wi)

Utilize the pen or finger touch operation for interactive functions on the projector.

8. Drawing (Whiteboard Mode)

Switch to whiteboard mode for drawing and annotations on the screen.

9. Drawing (Annotation Mode)

Use annotation mode for adding notes and highlights to your presentations.

10. PC Interactivity

Enable PC interactivity mode for seamless interaction between your computer and the projector.

11. For More Information

Refer to the official Epson website for additional resources and support.

Frequently Asked Questions

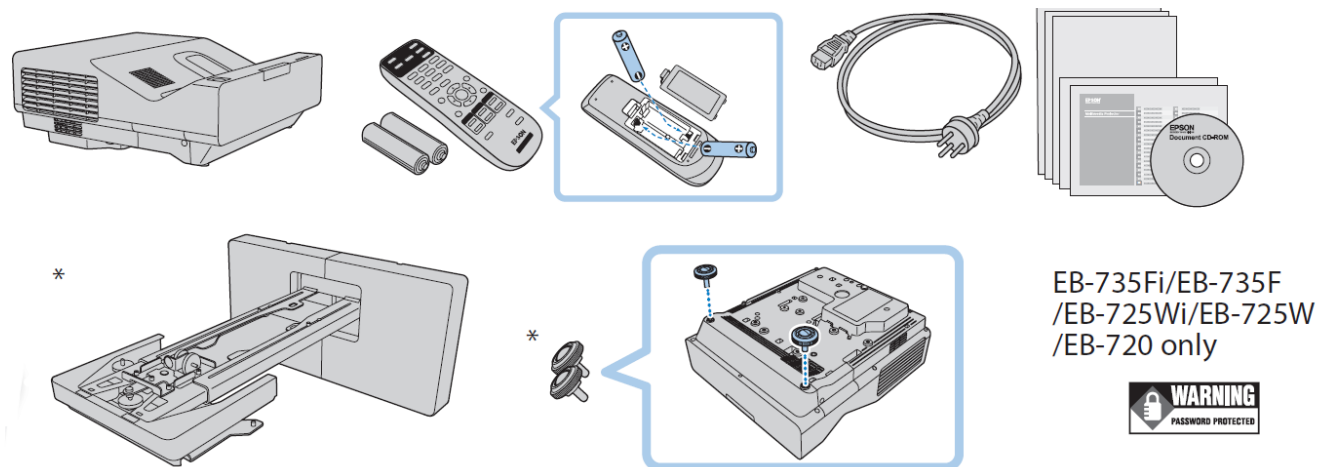
Q: How do I adjust the focus on the projector?

A: Use the focus ring around the lens to adjust the focus of the projected image.

Q: Can I connect my smartphone to this projector?

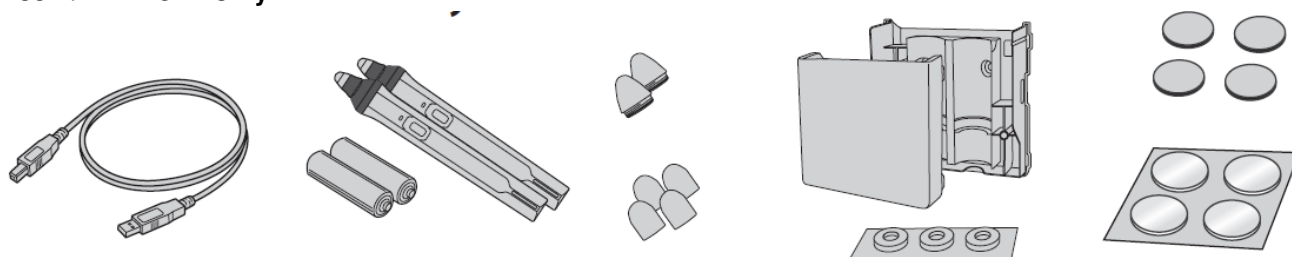
A: Yes, you can connect your smartphone using compatible cables or wireless connectivity options if supported.

Product Box Contents

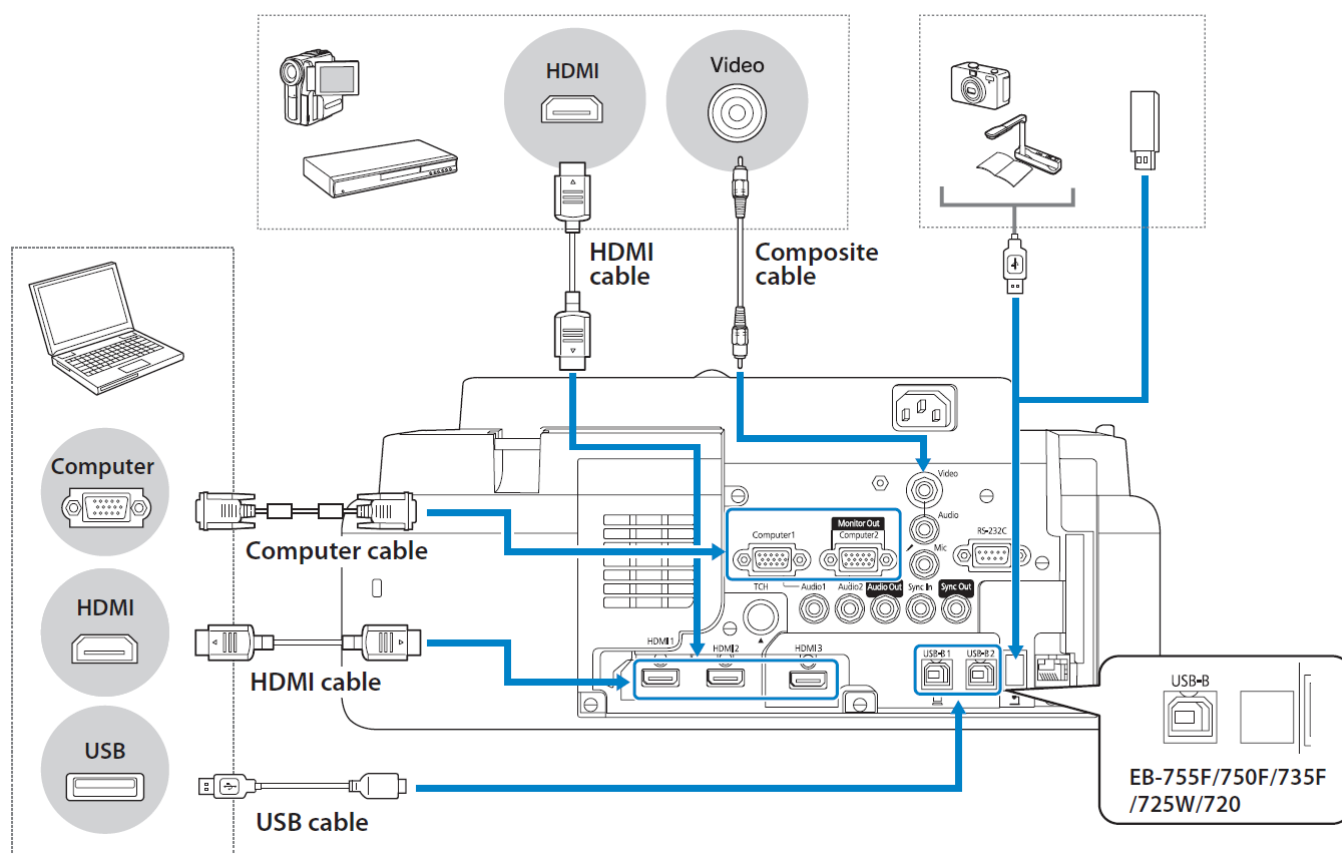


- Bundled items vary depending on the country or the model.

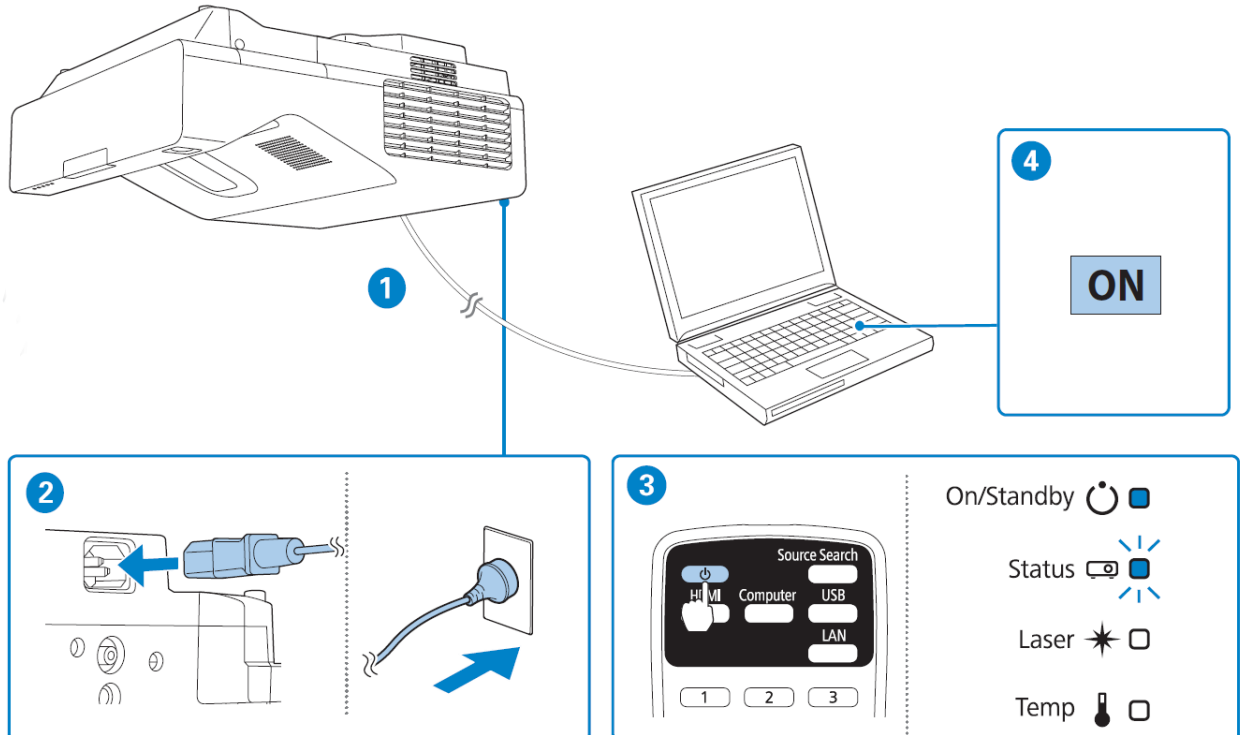
EB-735Fi/EB-725Wi only



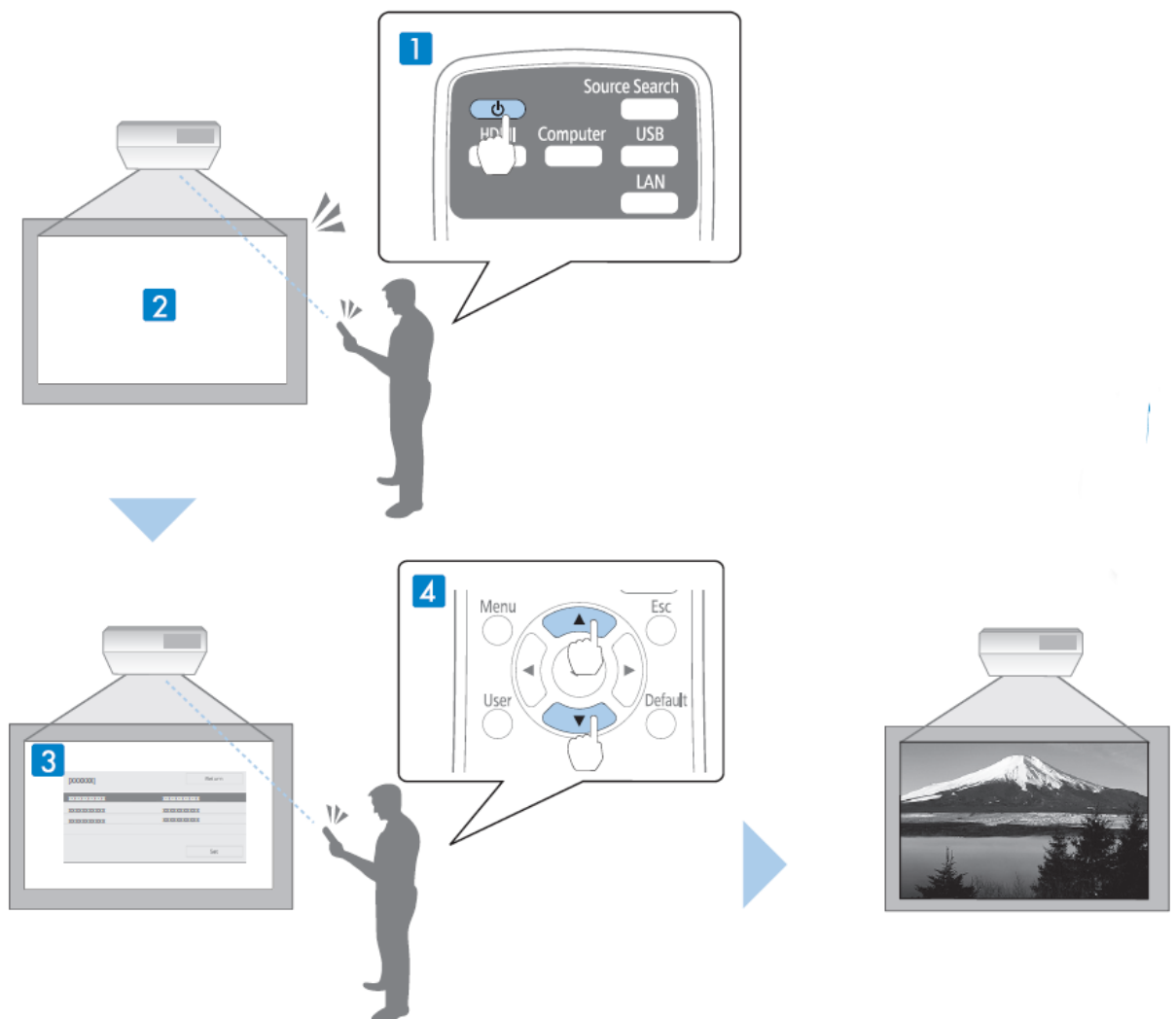
Connecting a Device



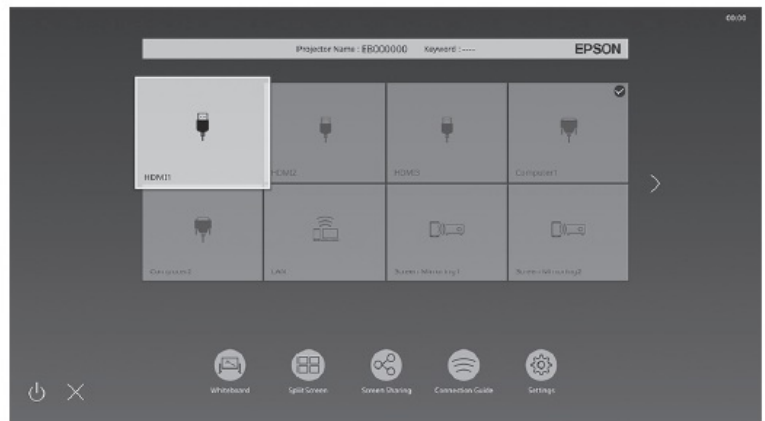
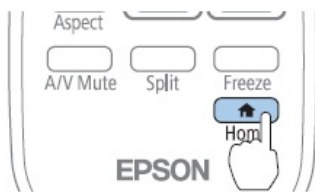
Turning On the Projector



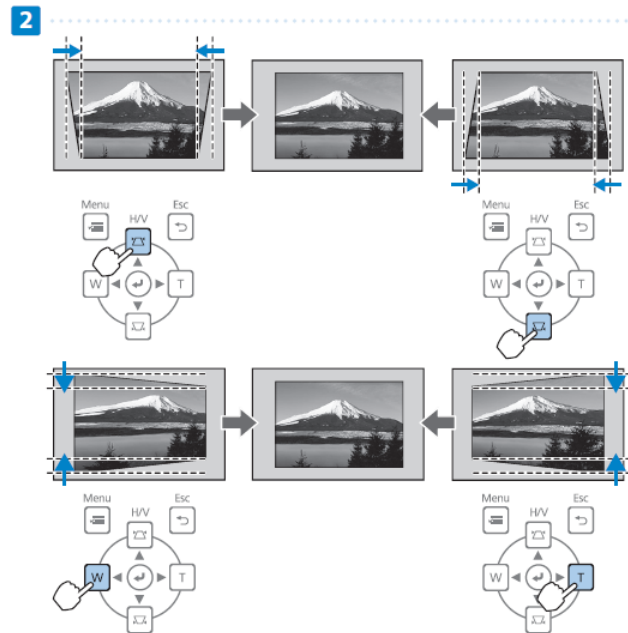
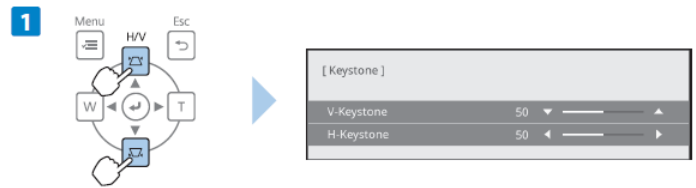
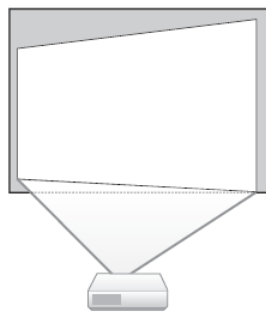
Initial Setting Wizard



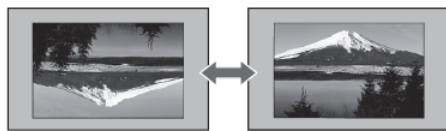
Home Screen



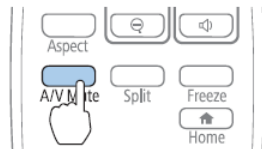
Adjusting the Image Shape



Changing the Projection Mode

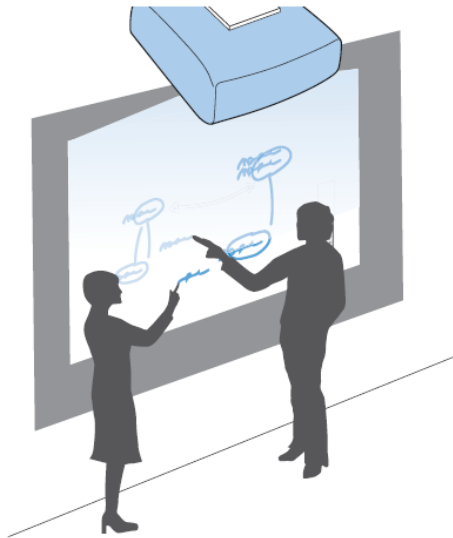


5 Sec.

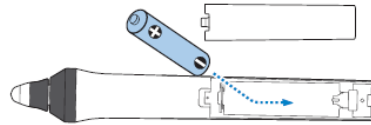


Easy Interactive Function

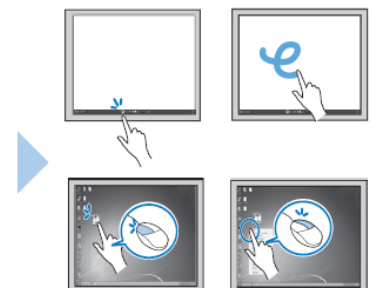
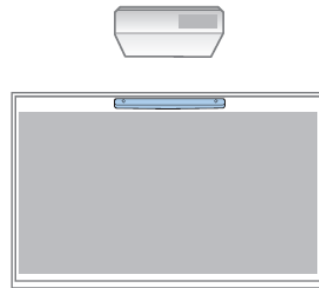
Easy Interactive Function (EB-735Fi/EB-725Wi)



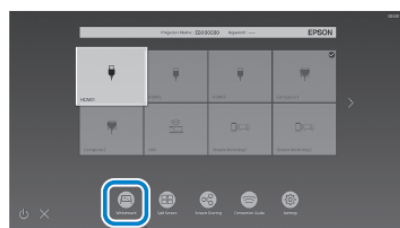
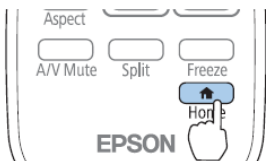
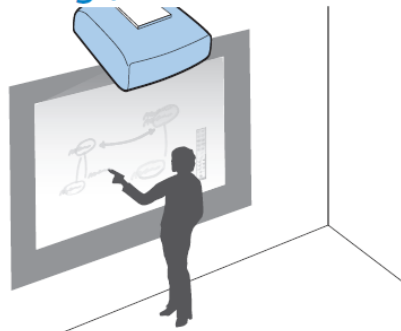
Pen Operation



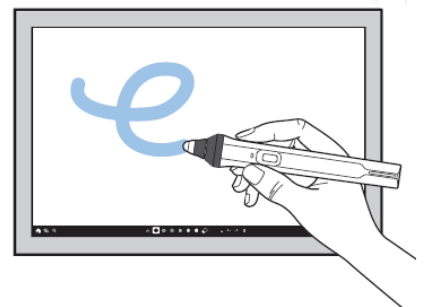
Finger Touch Operation



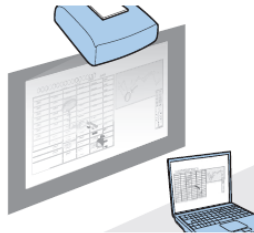
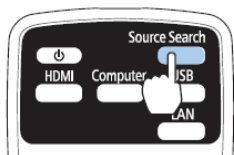
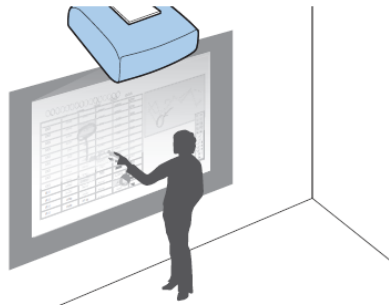
Drawing (Whiteboard Mode)



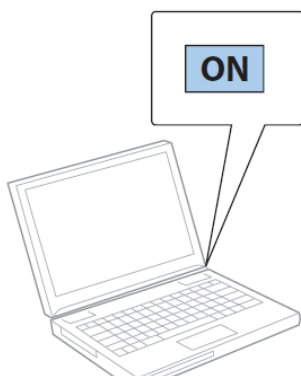
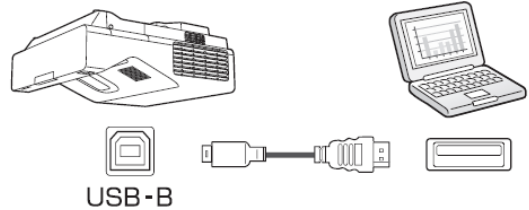
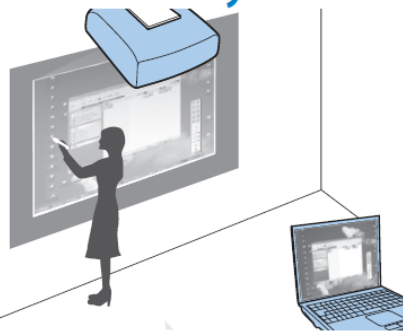
Whiteboard



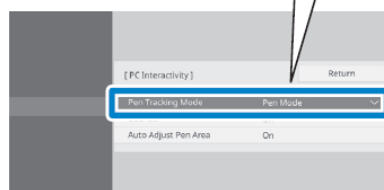
Drawing (Annotation Mode)



PC Interactivity



[Pen/Touch] > [PC Interactivity] > [Pen Tracking Mode]



Windows/Mac: [Pen Mode]
Ubuntu: [Mouse Mode]



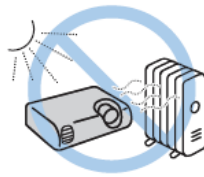
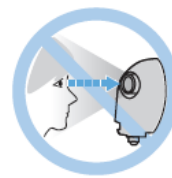
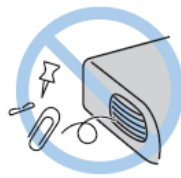
For More Information



or



epson.sn



413961200

Documents / Resources



EPSON EB-735Fi Laser Ultra Short Throw Interactive Projector [pdf] User Manual
EB-735Fi Laser Ultra Short Throw Interactive Projector, EB-735Fi, Laser Ultra Short Throw Interactive Projector, Short Throw Interactive Projector, Throw Interactive Projector, Interactive Projector, Projector

References

- [E Epson Setup Navi | epson.sn](https://www.epson.com/epson/sn)
- [Manual-Hub.com - Free PDF manuals!](https://www.manual-hub.com)
- [User Manual](#)

Manuals+. Privacy Policy

This website is an independent publication and is neither affiliated with nor endorsed by any of the trademark owners. The "Bluetooth®" word mark and logos are registered trademarks owned by Bluetooth SIG, Inc. The "Wi-Fi®" word mark and logos are registered trademarks owned by the Wi-Fi Alliance. Any use of these marks on this website does not imply any affiliation with or endorsement.