



EPSON DS-C480W Wireless Compact Desktop Document Scanner Instructions

[Home](#) » [Epson](#) » EPSON DS-C480W Wireless Compact Desktop Document Scanner Instructions 

Contents

- [1 EPSON DS-C480W Wireless Compact Desktop Document Scanner](#)
- [2 Product Information](#)
- [3 Product Usage Instructions](#)
- [4 Remove the packing materials](#)
- [5 Turn on the scanner](#)
- [6 WHAT IN BOX](#)
- [7 Install software](#)
- [8 Scan a document](#)
- [9 Straight path position](#)
- [10 Troubleshooting Wi-Fi Setup](#)
- [11 Documents / Resources](#)
 - [11.1 References](#)

EPSON

EPSON DS-C480W Wireless Compact Desktop Document Scanner



Product Information

The DS-C480W is a scanner designed by Epson. It is a versatile scanner that can scan various types of documents, including letter- or A4-size originals, receipts, business cards, large folded originals (such as tabloid or A3), long paper, booklets, I.D. cards, passports, and envelopes.

It features a vertical path position and a straight path position for scanning different types of originals. The scanner has an LCD screen that displays icons and instructions for easy navigation.

For detailed information on loading and scanning originals, setting up presets, and using Epson Connect™, please refer to the online User's Guide.

Requirements

An internet connection is required to obtain the product software. Make sure you have a stable internet connection before proceeding with the installation.

Installation

1. Visit Epson's support site listed below to download the Drivers and Utilities Combo Package:
<http://epson.com/support/dsc480w> (U.S.) or <http://epson.ca/support/dsc480w> (Canada).
2. Double-click the downloaded file to install the software.
3. Follow the on-screen instructions to set up the connection.

Product Usage Instructions

Scanning Letter- or A4-size originals, receipts, and business cards:

1. Check the icon on the LCD screen.
2. If the icon indicates the vertical path position, move the back of the scanner to the right and tilt the scanner forward.
3. Load the original faceup and align the top edge first.
4. Slide the edge guides against the original to hold it in place.

5. Select "Computer" on the LCD screen.
6. Select a job and press the Start icon to initiate the scan.

Scanning large folded originals, long paper, booklets, I.D. cards, passports, and envelopes:

1. Check the icon on the LCD screen.
2. If the icon indicates the straight path position, move the back of the scanner to the right and tilt the scanner backward.
3. Place the original on the scanner with the top edge facing you.
4. Select "Computer" on the LCD screen.
5. Select a job and press the Start icon to initiate the scan.

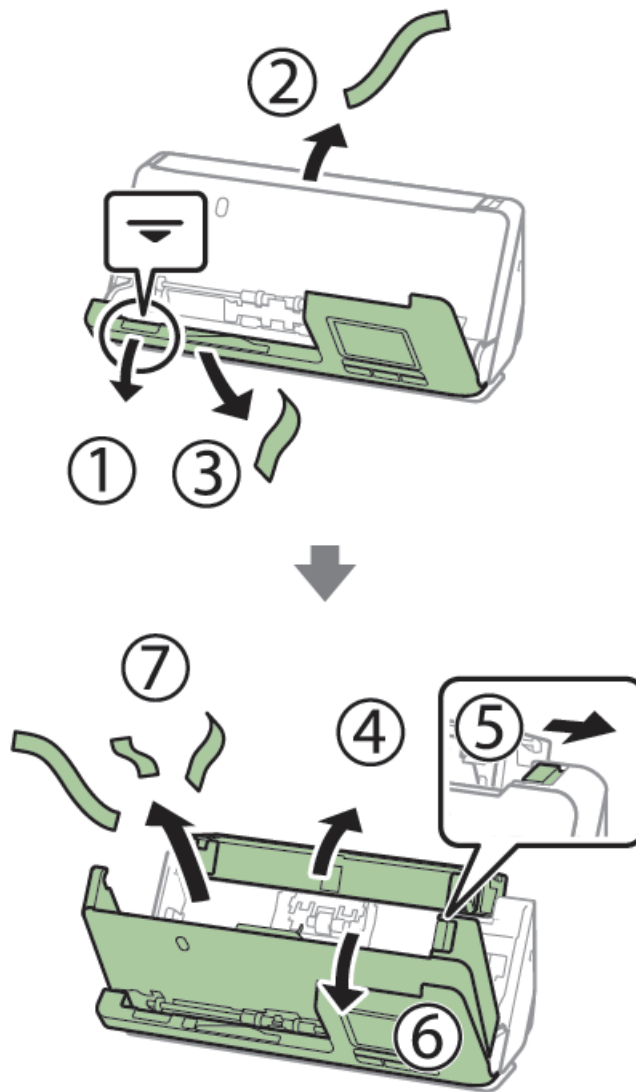
For further assistance with software usage, consult the software's Help or ? button. You can also refer to the User's Guide by double-clicking the icon on your desktop (or in the Applications/Epson Software/Guide folder on a Mac).

If you require technical support or have any questions, you can visit Epson's support website or contact their support representatives via phone during their working hours.

Start Here

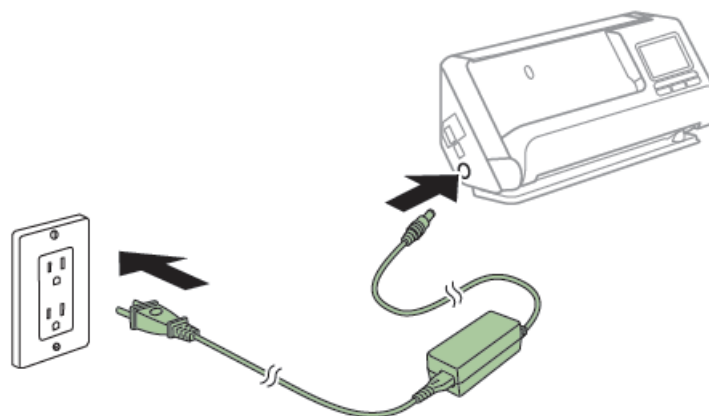
IMPORTANT: Before using this product, make sure you read these instructions and the safety instructions in the online User's Guide

Remove the packing materials

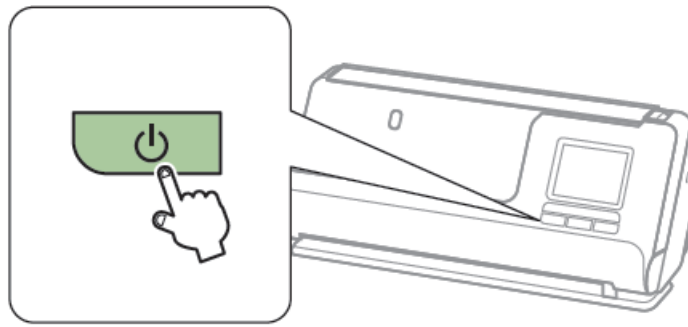


Turn on the scanner

1

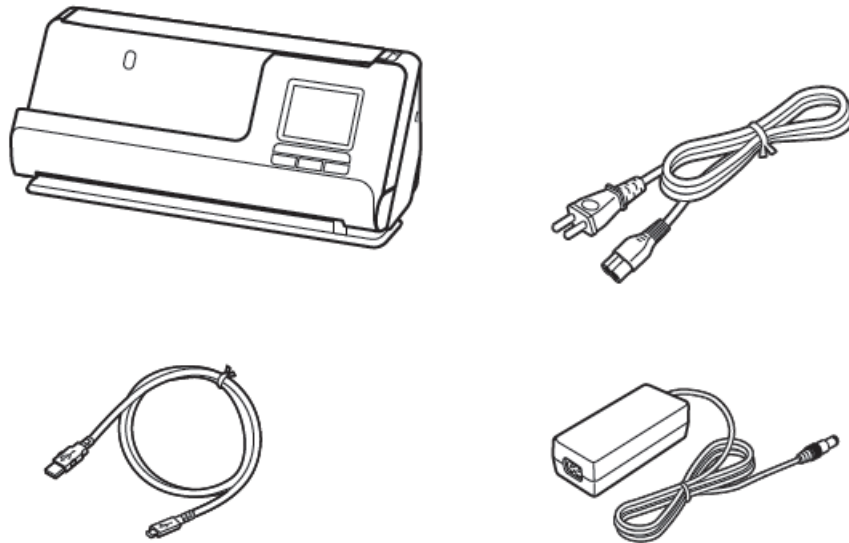


- Press the power button



- Select your language, date, and time settings.

WHAT IN BOX



Note: Do not connect the USB cable until instructed to do so.

Install software

Note: An internet connection is required to obtain the product software.

- Visit Epson's support site listed below to download the Drivers and Utilities Combo Package.
<http://epson.com/support/dsc480w> (U.S./É.-U.)
<http://epson.ca/support/dsc480w> (Canada)
- Double-click the file you downloaded to install the software. Follow the on-screen instructions to set up the connection.

Scan a document

Note: For detailed information on loading and scanning originals, see the online User's Guide


Note: To scan using the Start icon, you must connect the scanner to a computer with Document Capture Pro (Windows®) or Document Capture (Mac) installed.

Vertical path position




Use the vertical path position to scan Letter- or A4-size originals, receipts, and business cards
Check the icon on the LCD screen and do one of the following:

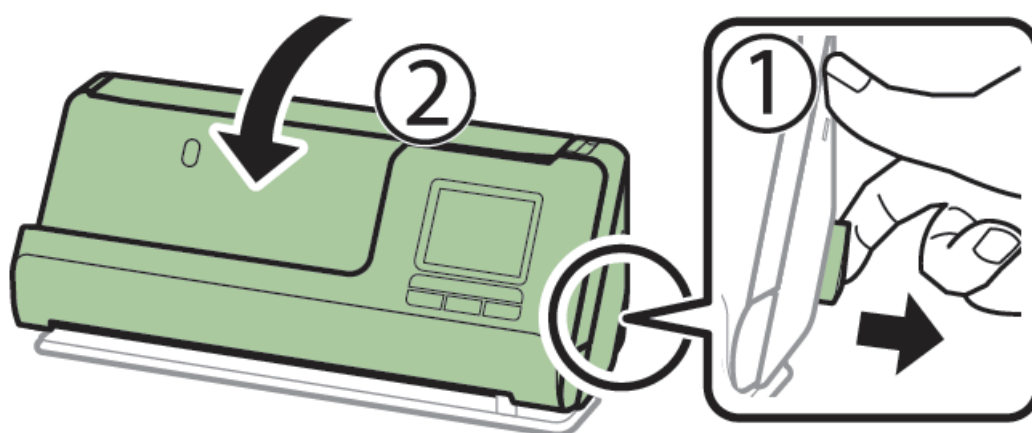


- If  is displayed, continue to step 2.

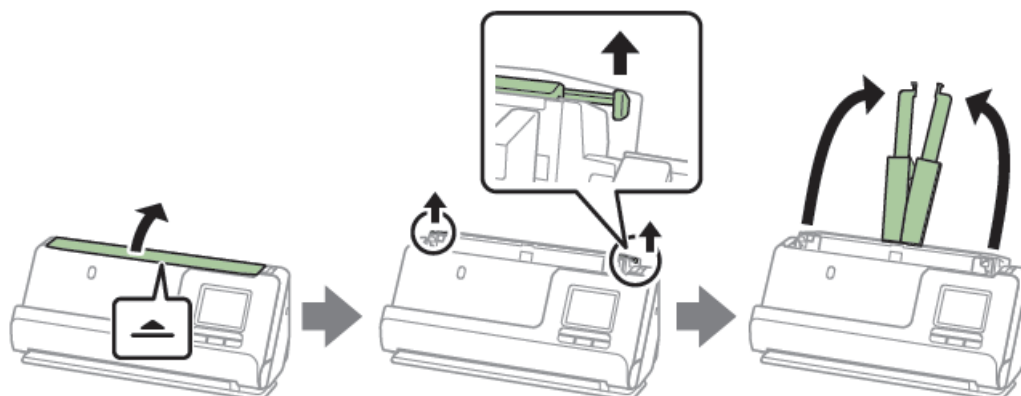


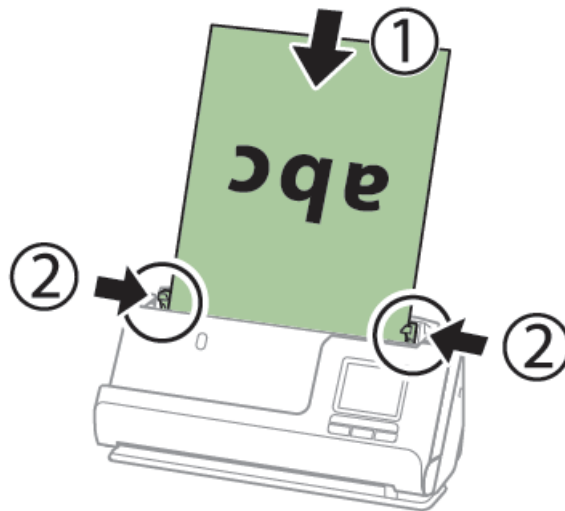
- If  is displayed, pull the position selector on the back of the scanner to the right, and tilt the scanner forward

- Open the input tray and raise the input tray extension



- Load the original faceup and top edge first, then slide the edge guides against the original







- Select Computer on the LCD screen, select a job, then press the Start icon to initiate the scan

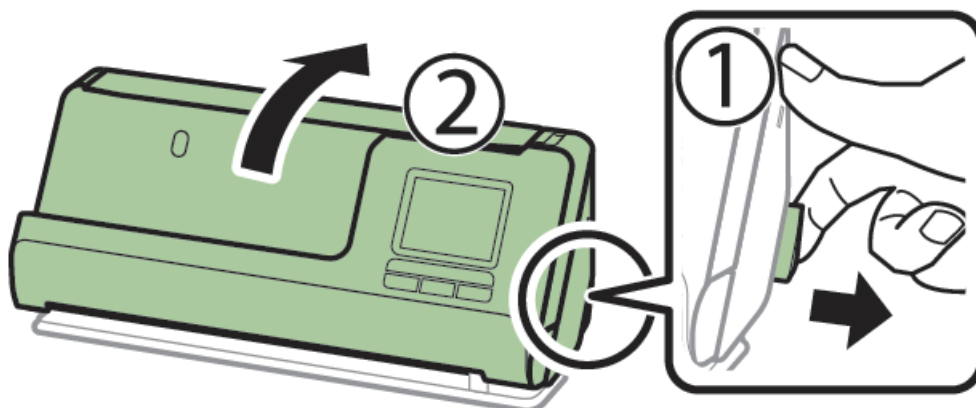
Straight path position



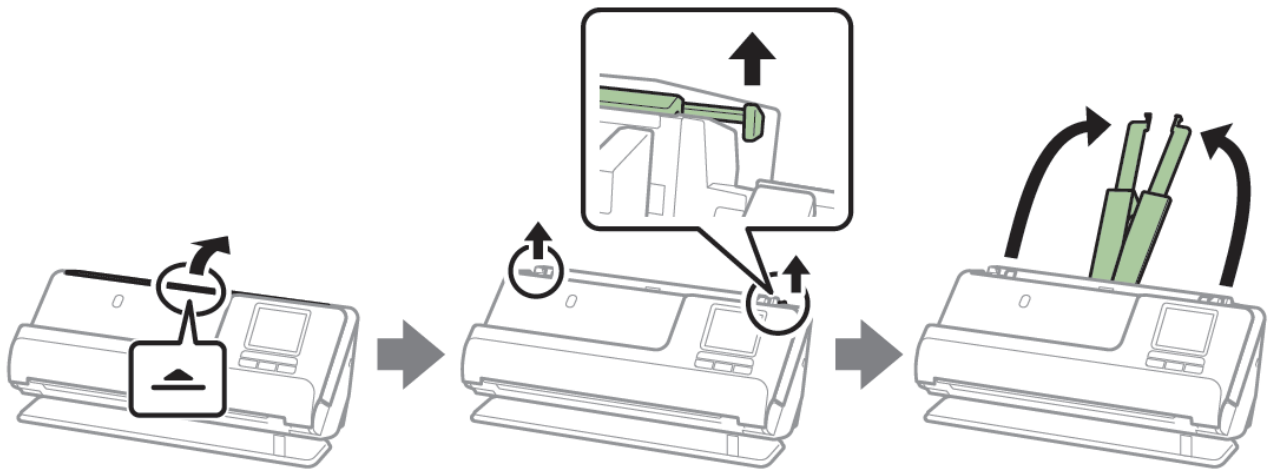
Use the straight path position to scan large, folded originals, such as tabloid or A3, long paper, booklets, I.D. cards, passports, and envelopes

Check the icon on the LCD screen and do one of the following

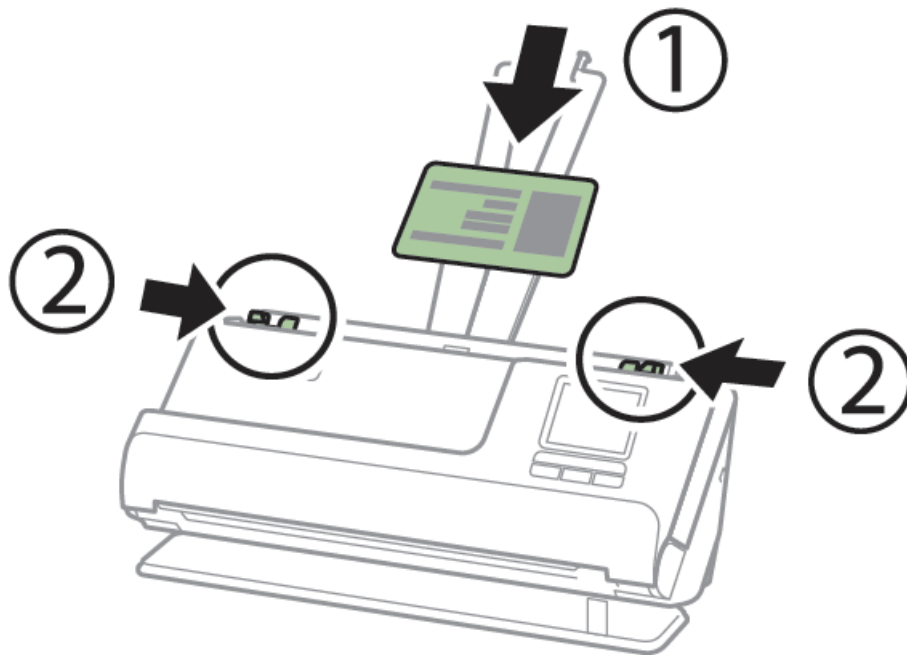
1. If  is displayed, continue to step 2.
2. If  is displayed, pull the position selector on the back of the scanner to the right, and tilt the scanner backward



3. Open the input tray and raise the input tray extension



4. Load the original faceup and top edge first, then slide the edge guides against the original



5. Select Computer on the LCD screen, select a job, then press the Start icon to initiate the scan.



Scan from a mobile device


To scan from an iOS® or Android™ device, download and install the free Epson Smart Panel® app from the App Store or Google Play™.

Note: For information on setting up presets and Epson Connect™, see the online User's Guide

Scan from a computer

- You can also scan from your computer with Document Capture Pro (Windows) or Document Capture (Mac).

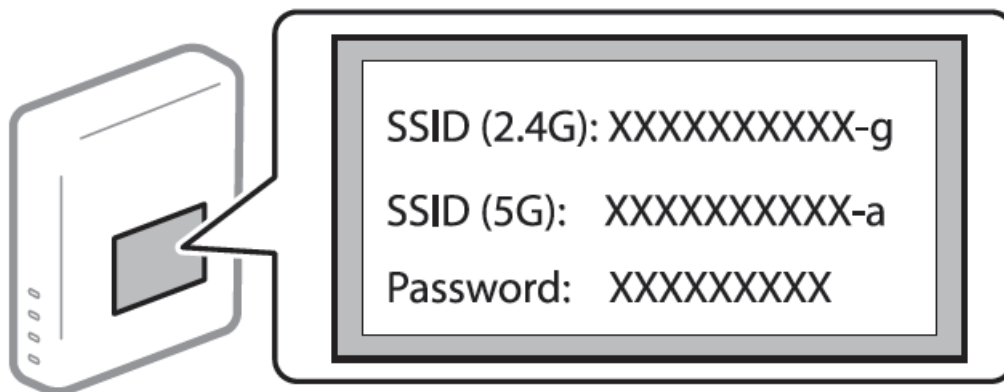
- Windows 11/Windows 10: Click  or , then search for Document Capture Pro and select it.
- Windows 8.x: Navigate to the Apps screen and select Document Capture Pro.

- Windows 7: Click  > All Programs > Epson Software > Document Capture Pro.
- Mac: Select Applications > Epson Software > Document Capture.

- For more information about scanning from a computer and creating custom scan jobs with Document Capture Pro (Windows) or Document Capture (Mac), click the Help or ? button in the scanner software or see online User's Guide.

Troubleshooting Wi-Fi Setup

- Your network name (SSID) and password are case sensitive. Make sure you enter uppercase and lowercase letters correctly



- If the scanner did not connect automatically and you are connecting it to the network manually, make sure you select the same network name (SSID) that the computer is connected to
- Turn your router off and on again, then repeat the software installation process

Help

• Scanner software help

Click the Help or ? button on your software screen.

• User's Guide

Double-click the icon on your desktop (or in the Applications/Epson Software/Guide folder on a Mac).

Epson technical support

Internet support

Visit <http://epson.com/support/dsc480w> (U.S.) or <http://epson.ca/support/dsc480w> (Canada) to download software and utilities, view manuals, get FAQs and troubleshooting advice, or contact Epson.

Speak to a support representative

Call (562) 276-4300 (U.S.) or (905) 709-3839 (Canada), 7 a.m. to 4 p.m., Pacific Time, Monday through Friday. Days and hours of support are subject to change without prior notice. Toll or long distance charges may apply

- EPSON and Epson Smart Panel are registered trademarks, EPSON Exceed Your Vision is a registered logomark, and Epson Connect is a trademark of Seiko Epson Corporation.
- Mac is a trademark of Apple Inc., registered in the U.S. and other countries. App Store is a service mark of Apple Inc., registered in the U.S. and other countries. Android and Google Play are trademarks of Google LLC.
- Windows is a registered trademark of Microsoft Corporation in the United States and/or other countries.
- General Notice: Other product names used herein are for identification purposes only and may be trademarks of their respective owners. Epson disclaims any and all rights in those marks.

This information is subject to change without notice

CPD-63186

© 2022 Epson America, Inc., 12/22

Printed in XXXXXX

Pays d'impression : XXXXXX

Documents / Resources



[EPSON DS-C480W Wireless Compact Desktop Document Scanner](#) [pdf] Instructions
DS-C480W Wireless Compact Desktop Document Scanner, DS-C480W, Wireless Compact De
sktop Document Scanner, Desktop Document Scanner, Document Scanner, Scanner

References

- [E SPT_B11B269202 | Epson DS-C480W | DS Series | Scanners | Support | Epson Canada](#)
- [E SPT_B11B269202 | Epson DS-C480W | DS Series | Scanners | Support | Epson US](#)