

**EPSON  
DS-800WN  
Wireless  
Network  
Document  
Scanners**



# EPSON DS-800WN Wireless Network Document Scanners Instruction Manual

[Home](#) » [Epson](#) » EPSON DS-800WN Wireless Network Document Scanners Instruction Manual 

## Contents

- [1 EPSON DS-800WN Wireless Network Document Scanners](#)
- [2 Product Information](#)
- [3 Product Usage Instructions](#)
- [4 WHAT'S INCLUDE](#)
- [5 POWER ON](#)
- [6 Placing Originals](#)
- [7 Documents / Resources](#)
  - [7.1 References](#)

# EPSON

**EPSON DS-800WN Wireless Network Document Scanners**



## Product Information

### Specifications:

- **Model:** DS-900WN
- **Connectivity:** USB
- **Scanning Features:** Send scanned data to a computer, network folder, email, Cloud, or USB drive
- **Product Guides:** User's Guide, Administrator's Guide
- **Frequency Range:** 3 GHz
- **Power Output:** 20 dBm (EIRP)

## Product Usage Instructions

### User's Guide:

The User's Guide provides instructions on using the scanner and its features. To set up the scanner, visit the provided website and download the necessary software. Follow the instructions for installation.

You can send scanned data to various destinations such as a computer, network folder, email, Cloud storage, or a USB drive. The scanner is designed to enhance work efficiency and scanning quality.

### Paper Alignment Plate:

Refer to the User's Guide for detailed instructions on using the Paper Alignment Plate to ensure accurate scanning alignment.

### Administrator's Guide:

The Administrator's Guide includes instructions for network setup, security settings, and product administration. Follow the guide to install the product in your network environment.

### FAQ:

Can I connect a USB cable without specific instructions?

No, only connect a USB cable when instructed to do so for specific functions.

What destinations can I send scanned data to?

You can send scanned data to a computer, network folder, email address, Cloud storage, or a USB drive.

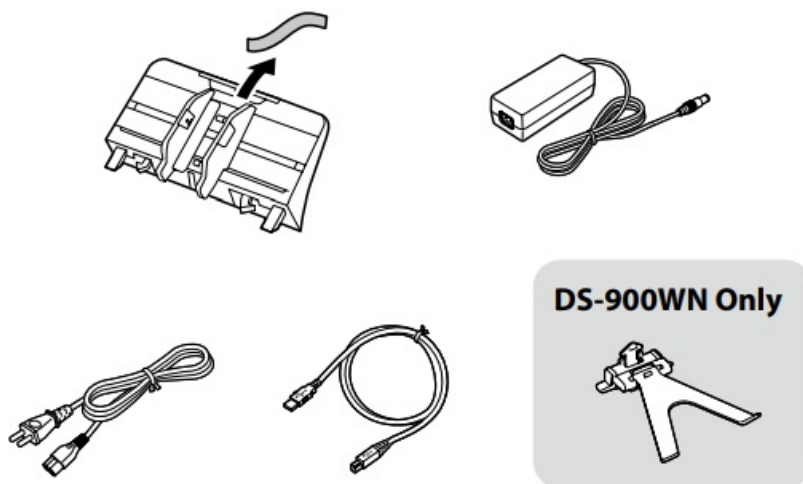
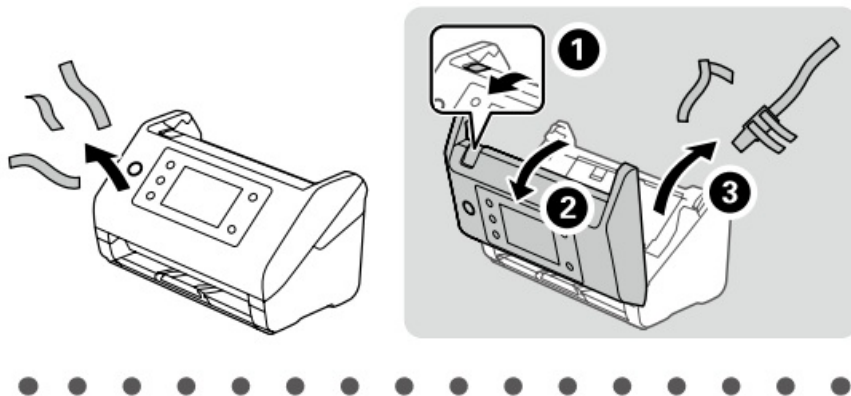
Is there a guide for aligning papers during scanning?

Yes, refer to the User's Guide for detailed instructions on using the Paper Alignment Plate for accurate scanning alignment.

What is the frequency range of the product?

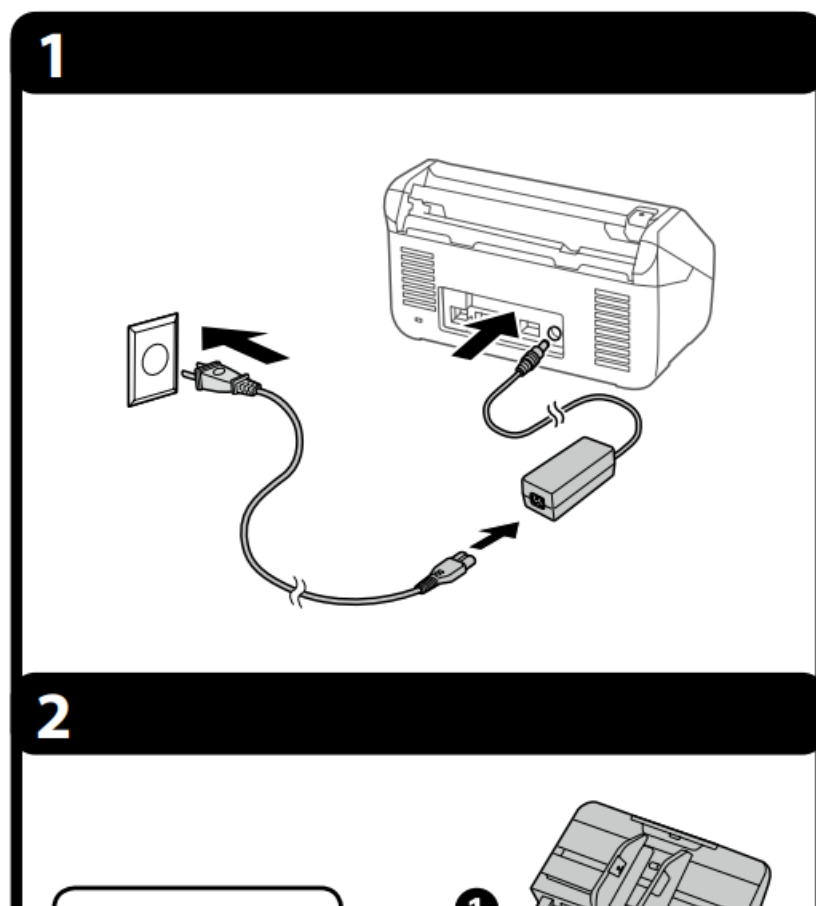
The frequency range of the product is 3 GHz.

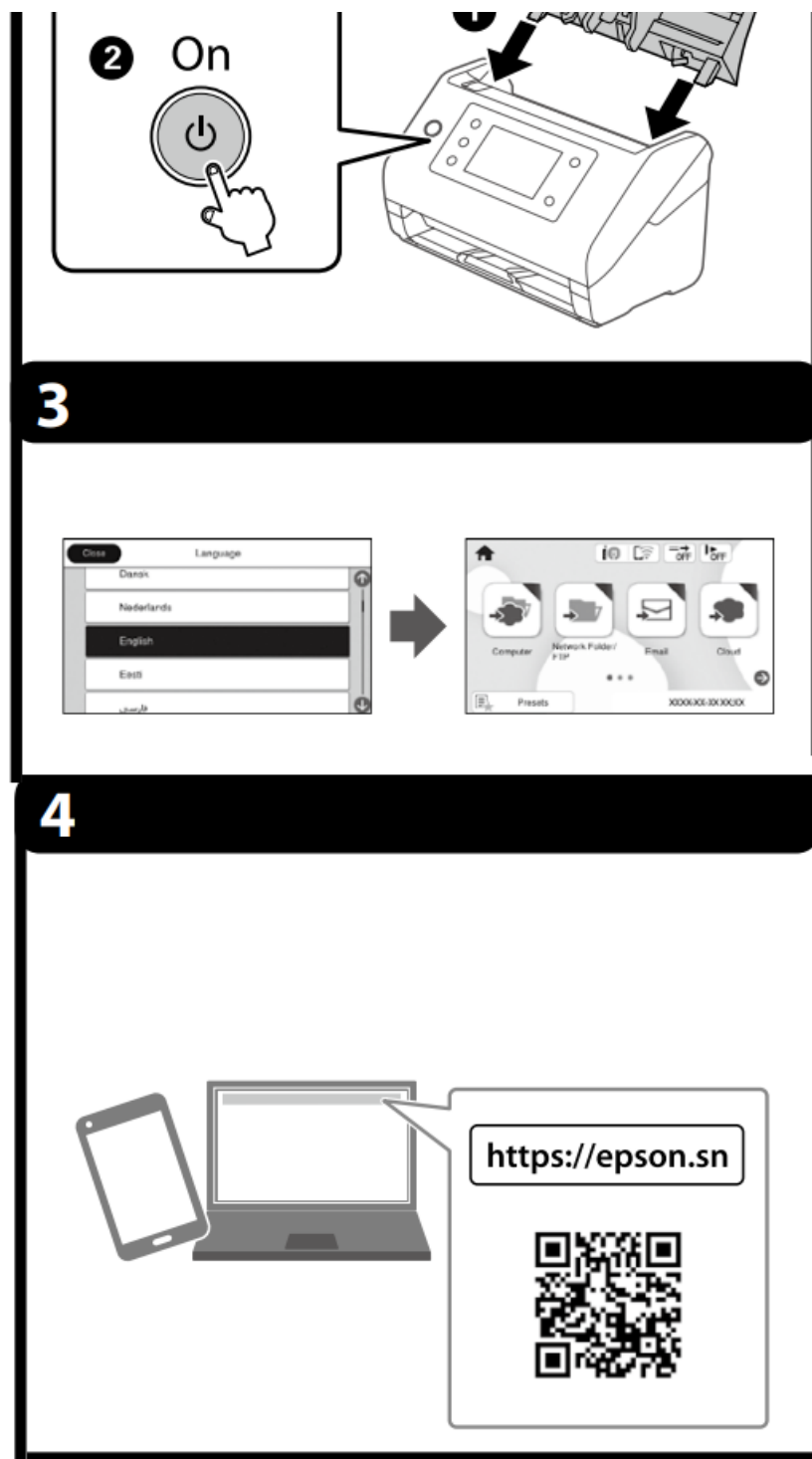
## WHAT'S INCLUDE



Do not connect a USB cable unless instructed to do so.

## POWER ON



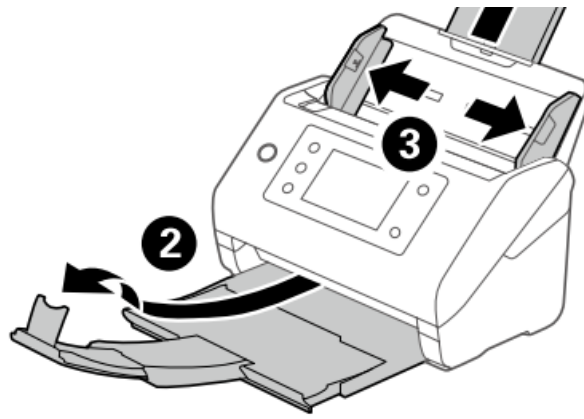


Select a language and time.

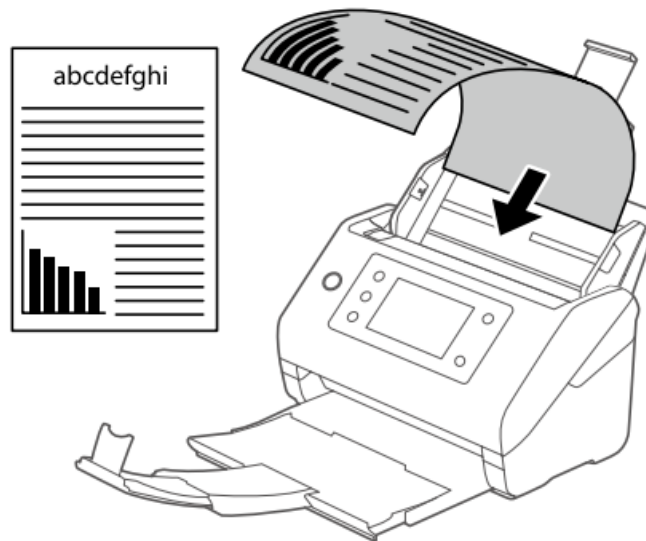
Visit the website above, and follow the instructions to download and install the necessary software to setup the scanner. <https://epson.sn>

## Placing Originals

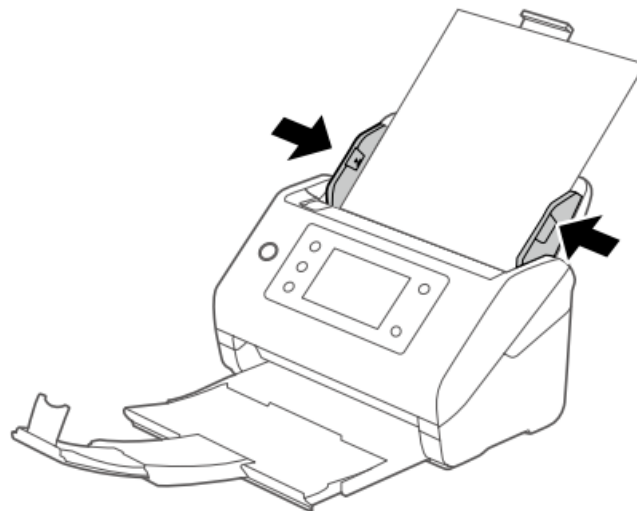


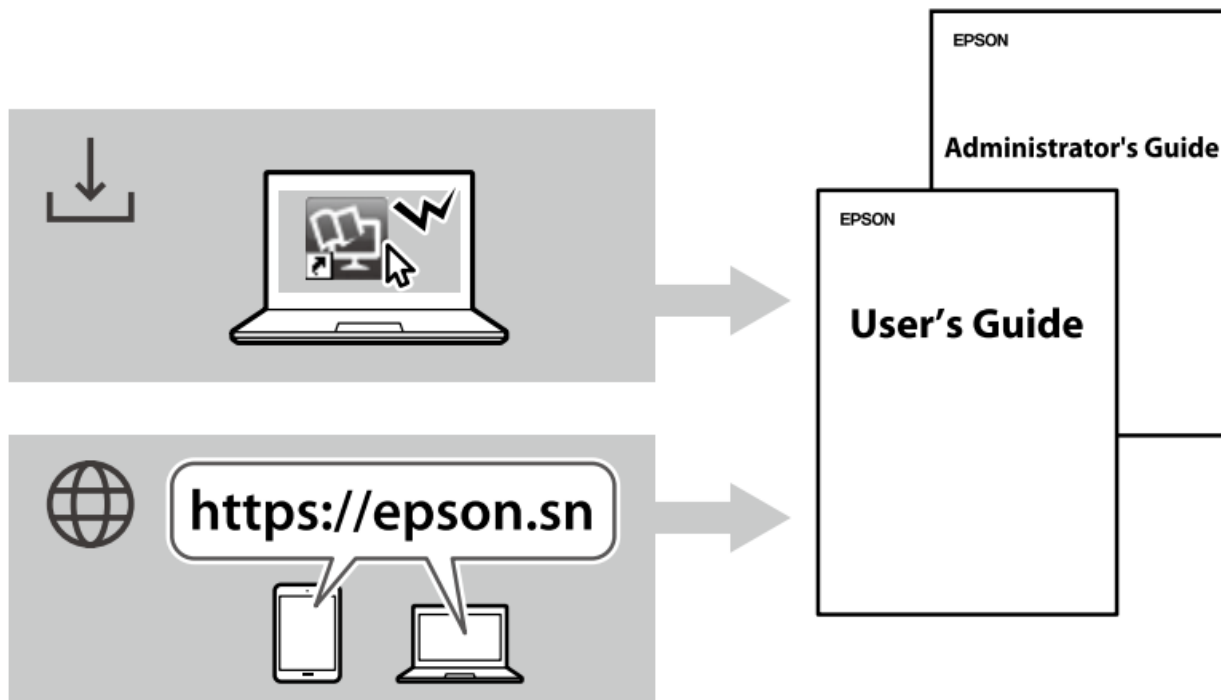


2



3





**User's Guide:** Provides instructions for users and introduces product features. You can send scanned data to the computer or specified destinations (such as a network folder, an e-mail address, the Cloud, or a USB drive). This scanner also has useful features to improve your work efficiency and scanning quality. See "Product Features". Refer to this guide for more details on using the Paper Alignment Plate.

**Administrator's Guide:** Provides instructions on installing the product in your network environment, making security settings, and administering the product.

<https://epson.sn>

### Radio Equipment Information for Users in Turkey

- **Frequency Range:** 2400-2483.5 MHz
- **Maximum Radio-Frequency Power Transmitted:** 20 dBm (EIRP)

### Information for Users in Turkey Only

**Adres:** 3-5, Owa 3-chome, Suwa-shi, Nagano-ken 392-8502 Japan

**Tel:** 81-266-52-3131

**Web:** <http://www.epson.com/>

The contents of this manual and the specifications of this product are subject to change without notice.

© 2024 Seiko Epson Corporation

### Documents / Resources

	<p><a href="#">EPSON DS-800WN Wireless Network Document Scanners</a> [pdf] Instruction Manual DS-900WN, DS-800WN, DS-800WN Wireless Network Document Scanners, DS-800WN, Wireless Network Document Scanners, Network Document Scanners, Document Scanners</p>
--	---

## References

- [User Manual](#)

[Manuals+](#), [Privacy Policy](#)

This website is an independent publication and is neither affiliated with nor endorsed by any of the trademark owners. The "Bluetooth®" word mark and logos are registered trademarks owned by Bluetooth SIG, Inc. The "Wi-Fi®" word mark and logos are registered trademarks owned by the Wi-Fi Alliance. Any use of these marks on this website does not imply any affiliation with or endorsement.