

EPSON®
B42B900301
Auto Color
Chart Reading
Portable Table



EPSON B42B900301 Auto Color Chart Reading Portable Table User Guide

[Home](#) » [Epson](#) » EPSON B42B900301 Auto Color Chart Reading Portable Table User Guide 

Contents

- [1 EPSON B42B900301 Auto Color Chart Reading Portable Table](#)
- [2 Product Usage Instructions](#)
- [3 FAQ](#)
- [4 Package Content](#)
- [5 Installation Instructions](#)
- [6 Specifications](#)
- [7 Symbols](#)
- [8 Important Safety Instructions](#)
- [9 Declaration](#)
- [10 Documents / Resources](#)
 - [10.1 References](#)

EPSON®

EPSON B42B900301 Auto Color Chart Reading Portable Table



Specifications

- Model Numbers: B42B900301, B42B900311, B42B900321, B42B900331
- Rated Current: 0.6 – 0.4 A
- Power Frequency: 50/60 Hz
- Environmental Conditions: Suitable for indoor use

Product Usage Instructions

Firmware Update:

- Ensure both the SD-10 and the color chart reading table have the latest firmware versions. Visit the Epson website to download the updates.

Preparation:

- If you have attached any optional accessories, such as the Main Unit Cover or labels, remove them to prevent interference. Follow the SD-10 Start Here sheet for initial setup, including language selection, date/time setting, and calibration.

Calibration:

- If the SD-10 has not been calibrated recently, perform a calibration process before installing it in the table for accurate color readings.

Safety Instructions:

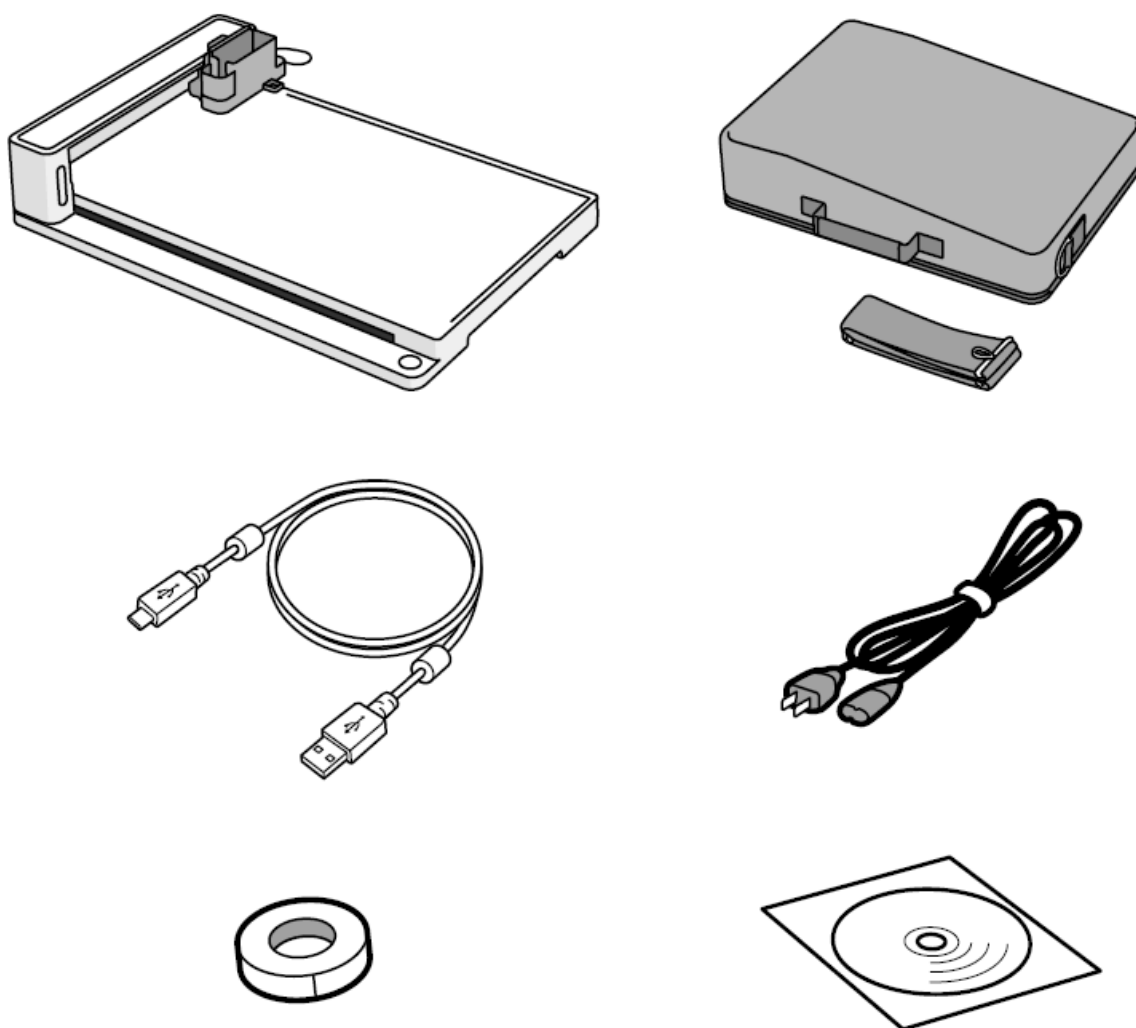
- Use only the provided power cord to avoid fire or electric shock.
- Ensure the AC power cord meets local safety standards.
- Avoid damage or fraying of the power cord.
- Place the product in a location allowing easy disconnection of the power cord.
- Do not attempt to repair or modify the product yourself.
- Refer servicing to qualified personnel under specific conditions.
- Avoid outdoor storage and exposure to extreme conditions.

FAQ

- **Q:** Where can I find support for the product?
 - **A:** For any questions or issues, visit [Epson Support](#) for assistance.

IMPORTANT: Before using this product, make sure you read these instructions and the safety instructions in the online User's Guide.

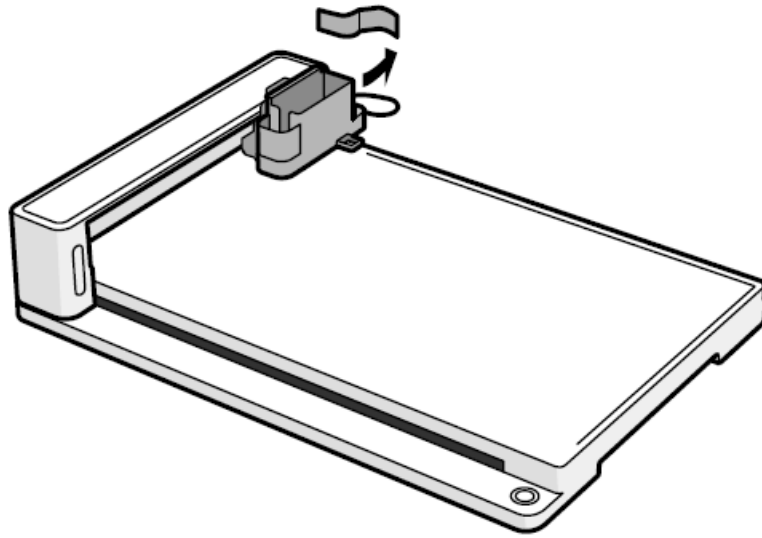
Package Content



Contents may vary by location.

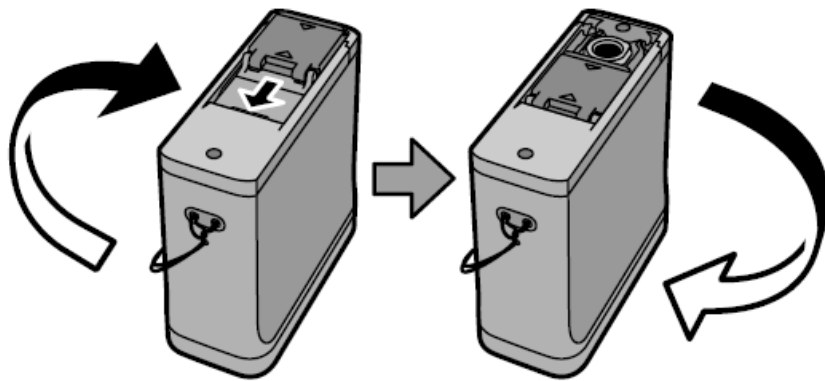
Installation Instructions

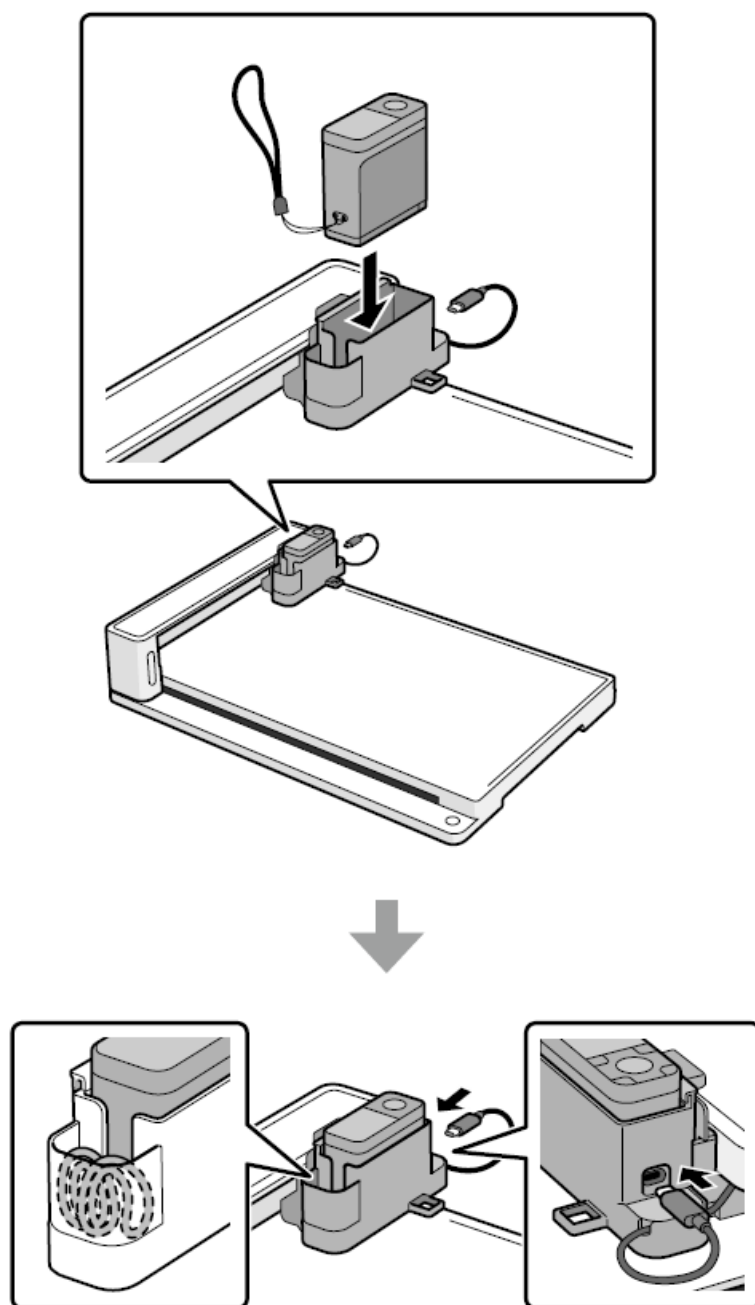
1



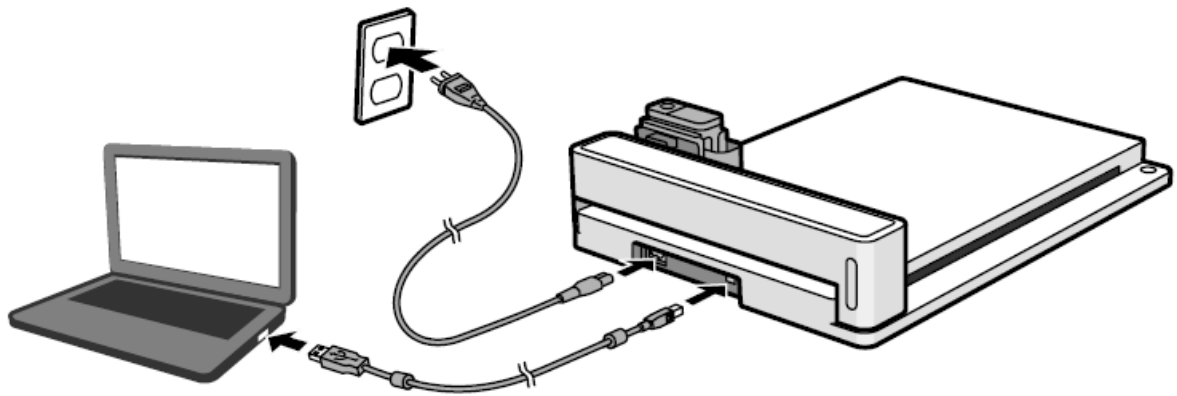
2

1



2**Note:**

- Update the firmware of the SD-10 and the color chart reading table to the latest versions.
- Go to your local Epson website to download the latest version of the firmware. <https://www.epson.com>
- If you installed the optional Main Unit Cover on the SD-10, remove it. Also, if you attached a label to the side of the SD-10, it may interfere with the holder. In that case, please remove it and place in the holder.
- If you are using the SD-10 for the first time, follow the instructions in the SD-10 Start Here sheet to set it up. Select a language, date, and time, and perform calibration before installing it in the table.
- If you have not calibrated the SD-10 for a long time, please calibrate it before installing it in the table.



Questions?



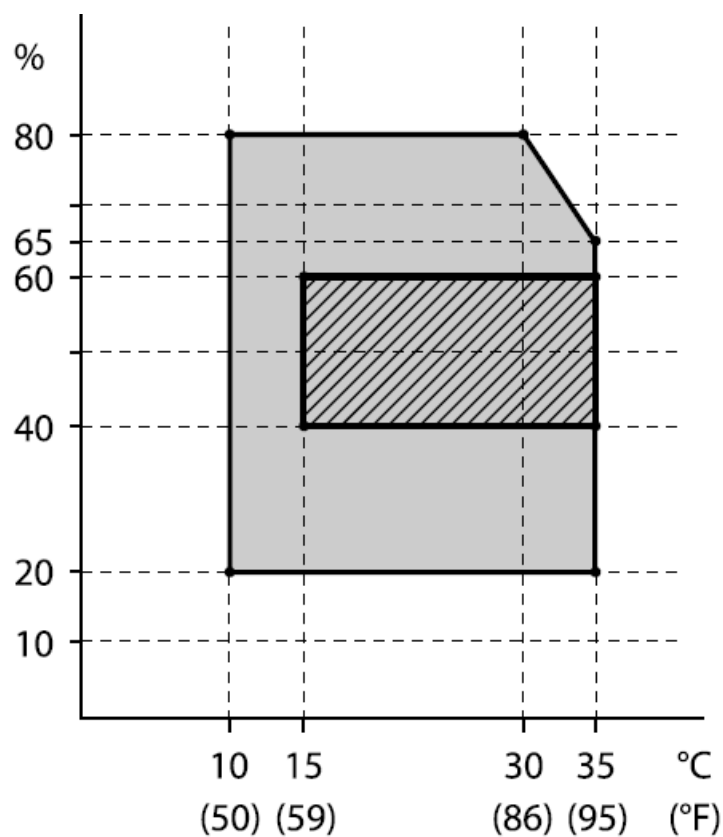
- <https://support.epson.net/spmtr/sd10/>

You can view and download the PDF User's Guide of the color chart reading table from the website above.

Specifications

Electrical	
Rated Voltage	AC100 – 240 V / 100 – 240 V CA /
Rated Current	0.6 – 0.4 A
Rated Frequency	50/60 Hz
Over Voltage Category	II

Environmental



- Operating temperature and humidity (without condensation) range (the range shown by the darker rectangular area is recommended)





Pollution Degree	PD2
IP Protection Class	IPX0
Maximum Operating Altitude	Up to 2,000 m (6,562 ft)
Supply Voltage Fluctuations	Up to 10%

Symbols

Symbols on the Product

The symbols on this Epson product are included to ensure safety and proper use of the product and to avoid injuries and property damage.

The symbols indicate the meaning below. Be sure that you completely understand the meaning of symbols on this product before using it.

	Stand-by
	USB
	Class II Equipment
	Alternating Current

Important Safety Instructions

- Use only the power cord supplied with the product and do not use the cord with any other equipment. Use of other cords with this product or the use of the supplied power cord with other equipment may result in fire or electric shock.
- Be sure your AC power cord meets the relevant local safety standards of the area where you plan to use it.
- Do not let the power cord become damaged or frayed.
- Use only the type of power source indicated on the product's label.
- Place the product in a location that allows you to easily disconnect the power cord connector.
- Never disassemble, modify, or attempt to repair the power cord, plug, product, or options by yourself, except as specifically explained in the product's guides. Doing so may result in injury, electric shock, or fire.
- Unplug the product and refer servicing to qualified service personnel under the following conditions: liquid has entered the product; the product has been dropped or the case has been damaged; the product does not operate normally or exhibits a distinct change in performance. Do not adjust controls that are not covered by the operating instructions.
- Do not place or store the product outdoors, near excessive dirt or dust, water, or heat sources, or in locations subject to shocks, vibrations, high temperature, or humidity.
- Do not spill liquid on the product or use the product with wet hands.
- Keep this product at least 22 cm (8.7 inches) away from cardiac pacemakers. Radio waves from this product may adversely affect the operation of cardiac pacemakers.
- Place the product on a flat, stable surface that extends beyond the base of the product in all directions. The product will not operate properly if it is tilted at an angle.
- Always keep this guide handy.

Declaration

For Users in Europe

CE Marking

Simplified EU Declaration of Conformity:

- Hereby, Seiko Epson Corporation declares that this equipment Model: KCA21A is in compliance with directive 2014/53/EU.
- The full text of the EU declaration of conformity is available at the following internet

address. <https://www.epson.eu/conformity>

Radio Equipment Information:

This product intentionally emits radio waves as described below.

- frequency band in which the radio equipment operates; 2.402 to 2.480 GHz
- maximum radio-frequency power transmitted in the frequency band in which the radio equipment operates; 9.74dBm (eirp power)

For GB (UKCA) and (UK NI) Users

- Hereby, Seiko Epson Corporation declares that the radio equipment type supplied herein is in compliance with the relevant statutory requirements.
- The full text of the declaration of conformity is available at the following internet address:

<https://www.epson.eu/conformity>


The contents of this manual and the specifications of this product are subject to change without notice.

General Notice: Other product names used herein are for identification purposes only and may be trademarks of their respective owners. Epson disclaims any and all rights in those marks.




© 2023 Seiko Epson Corporation
Printed in XXXXXX

Documents / Resources

	EPSON B42B900301 Auto Color Chart Reading Portable Table [pdf] User Guide B42B900301 Auto Color Chart Reading Portable Table, B42B900301, Auto Color Chart Reading Portable Table, Chart Reading Portable Table, Reading Portable Table, Portable Table, Table
---	---

References

-  [Anatel — Agência Nacional de Telecomunicações](#)
-  [Epson Global Portal](#)
- [User Manual](#)

[Manuals+](#). [Privacy Policy](#)

This website is an independent publication and is neither affiliated with nor endorsed by any of the trademark owners. The "Bluetooth®" word mark and logos are registered trademarks owned by Bluetooth SIG, Inc. The "Wi-Fi®" word mark and logos are registered trademarks owned by the Wi-Fi Alliance. Any use of these marks on this website does not imply any affiliation with or endorsement.