


EPSON B11B257401 Expression



EPSON B11B257401 Expression User Guide

[Home](#) » [Epson](#) » EPSON B11B257401 Expression User Guide 

Contents

- 1 EPSON B11B257401 Expression
- 2 Product Information
- 3 Product Usage Instructions
- 4 WHATS IN THE BOX
- 5 INSTALLATION INSTRUCTION
- 6 INFO
- 7 Documents / Resources
 - 7.1 References
- 8 Related Posts

EPSON

EPSON B11B257401 Expression



Product Information

Specifications

- **Model:** [Model Name]
- **Power Source:** [Power Source Type]
- **Connectivity:** USB
- **Supported Languages:** English, German, Dutch, Italian, Spanish, Portuguese, Danish, Finnish, Norwegian, Polish, Romanian, Bulgarian, Latvian, Lithuanian

Product Usage Instructions

Step 1: Software Installation

To set up the scanner, follow these steps:

1. Visit the website provided above.
2. Download the necessary software for your operating system.
3. Install the software by following the on-screen instructions.

Step 2: Connecting the Scanner

Before connecting the USB cable, ensure that the software installation is complete.

Follow these steps:

1. Locate the USB port on your computer and the corresponding port on the scanner.
2. Insert one end of the USB cable into the USB port on your computer.
3. Insert the other end of the USB cable into the USB port on the scanner.

Step 3: User's Guide

To access detailed instructions on using the product, maintenance, and problem-solving, you have two options:

- Click on the installed manual icon on your computer.
- Visit the website provided above and navigate to the User's Guide section.

FAQ (Frequently Asked Questions)

Q: Can I connect the USB cable before installing the software?

- **A:** No, please do not connect the USB cable unless instructed to do so. Complete the software installation first.

Q: How can I open the User's Guide?

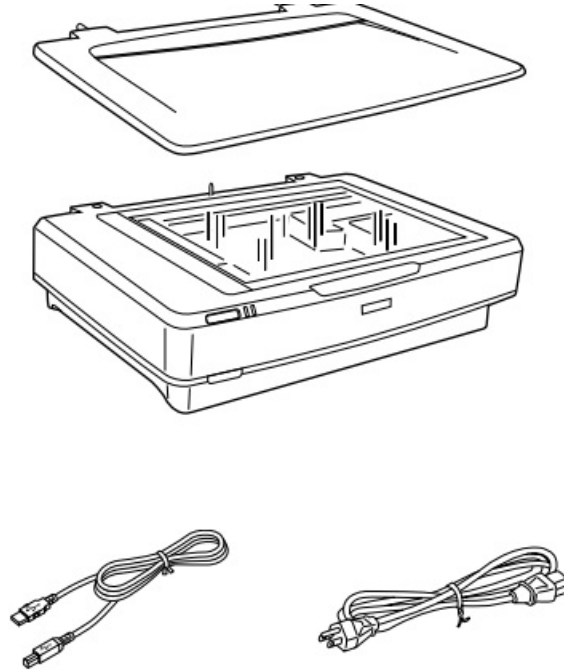
- **A:** You can open the User's Guide by clicking on the installed manual icon on your computer or by visiting the

website provided above and navigating to the User's Guide section.

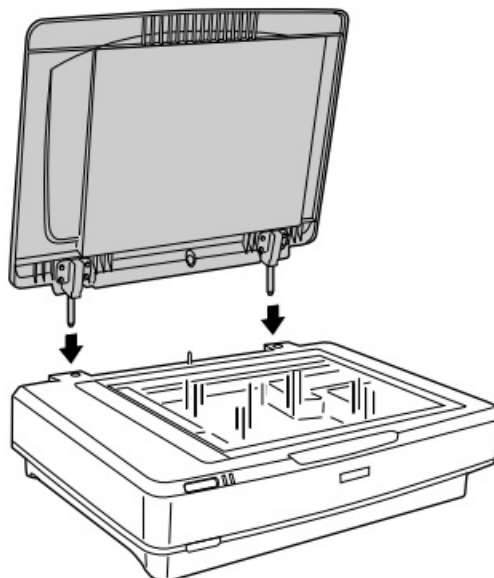
Q: Are the contents of the manual and specifications subject to change?

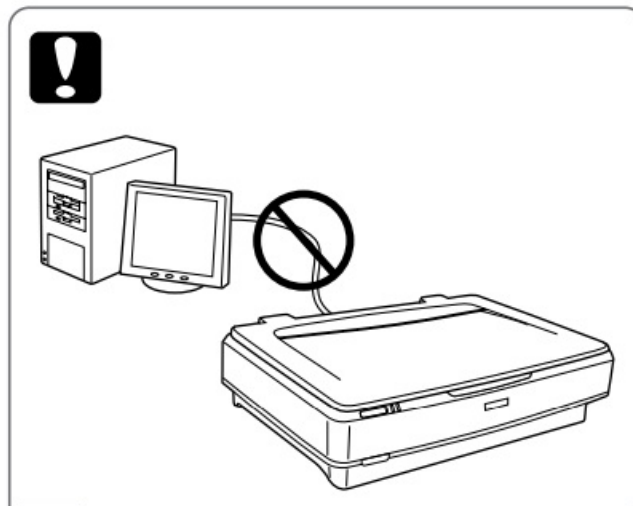
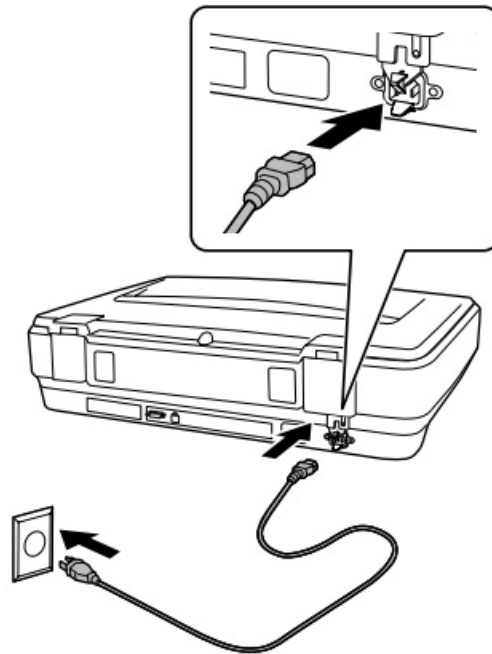
- **A:** Yes, the contents of this manual and the specifications of the product are subject to change without notice.

WHATS IN THE BOX



INSTALLATION INSTRUCTION





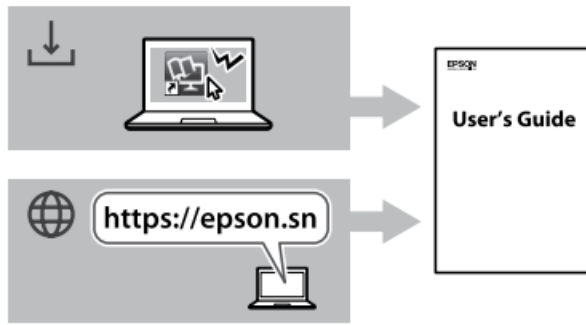
- Do not connect a USB cable unless instructed to do so.

INFO



- Visit the website above, and follow the instructions to download and install the necessary software to set up the scanner.

Questions?



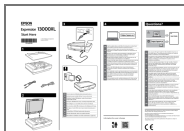
- You can open the User's Guide from the installed manual icon or the website above.
- This guide provides instructions on using the product, maintenance, and solving problems.
- <https://epson.sn>

Information for users in Europe



- The contents of this manual and the specifications of this product are subject to change without notice.

Documents / Resources



[EPSON B11B257401 Expression](#) [pdf] User Guide
B11B257401 Expression, B11B257401, Expression

References

- [User Manual](#)

Manuals+, Privacy Policy

This website is an independent publication and is neither affiliated with nor endorsed by any of the trademark owners. The "Bluetooth®" word mark and logos are registered trademarks owned by Bluetooth SIG, Inc. The "Wi-Fi®" word mark and logos are registered trademarks owned by the Wi-Fi Alliance. Any use of these marks on this website does not imply any affiliation with or endorsement.